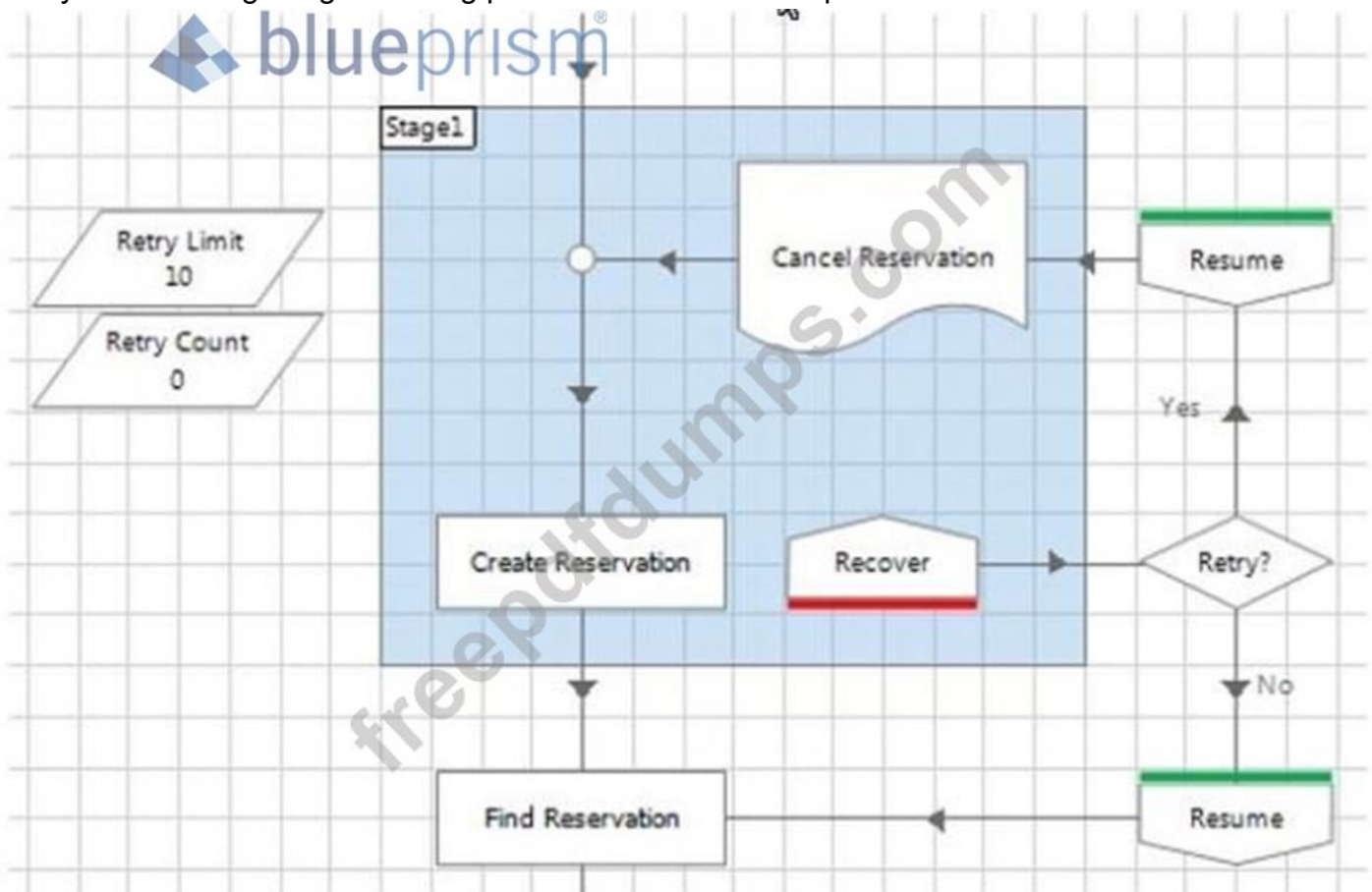


BluePrism.AD01.v2021-11-10.q69

Exam Code:	AD01
Exam Name:	Blue Prism Accredited Developer Exam
Certification Provider:	Blue Prism
Free Question Number:	69
Version:	v2021-11-10
# of views:	1409
# of Questions views:	690
https://www.freepdfdumps.com/BluePrism.AD01.v2021-11-10.q69.html	

NEW QUESTION: 1

Study the following image showing pan: of the flow within a process:



What problems do you see with the process flow? (select 2 responses)

- A. There is a missing Recover stage on one of the routes through the flow.
- B. There is a missing Resume stage on one of the routes through the flow.
- C. The Retry Count is not being incremented for each retry.
- D. If an exception is thrown in the Cancel Reservation page and is allowed to bubble up to be caught by the Recover stage, the Create Reservation action won't be retried.

Answer: A ([LEAVE A REPLY](#))

Explanation

C,D

NEW QUESTION: 2

The Work Queue "Customer Onboarding" has a number of Pending Items which may be tagged as "Domestic",

"Retail" or "Business" There is also a tag for the 8 digit product code formatted as "Product Code: {product code}" e.g. Product Code: CA123456.

What is the correct configuration to get the next item from the queue that:

* Isn't applying for a loan product i.e. Product Code doesn't begin with "LN" And

* Is a domestic customer

A. Configure "Domestic; -Product Code: LN?" in the Tag Filter parameter

B. Configure "Domestic; -Product Code: I_N"" in the Tag Filter parameter

C. Configure 'Domestic and Product Code <> LN?' in the Tag Filter parameter

D. Configure "Domestic + [Product Code] <> LN*" in the Tag Filter parameter

Answer: ([SHOW ANSWER](#))

NEW QUESTION: 3

When configuring an object's run mode which of the following is true?

A. Setting the run mode to exclusive will ensure only one process runs on that resource at a time.

B. Setting the run mode to background will enable the object to run at the same time as foreground and background objects on the same resource.

C. Leaving the run mode blank will allow any number of processes and objects to run at the same time on the same resource.

D. Setting the run mode to foreground will give the object priority over the target system ahead of any other Business Object.

Answer: D ([LEAVE A REPLY](#))

NEW QUESTION: 4

When automating a Windows application what type of stage is configured to perform a Global Send Key Events?

A. Notes Stage

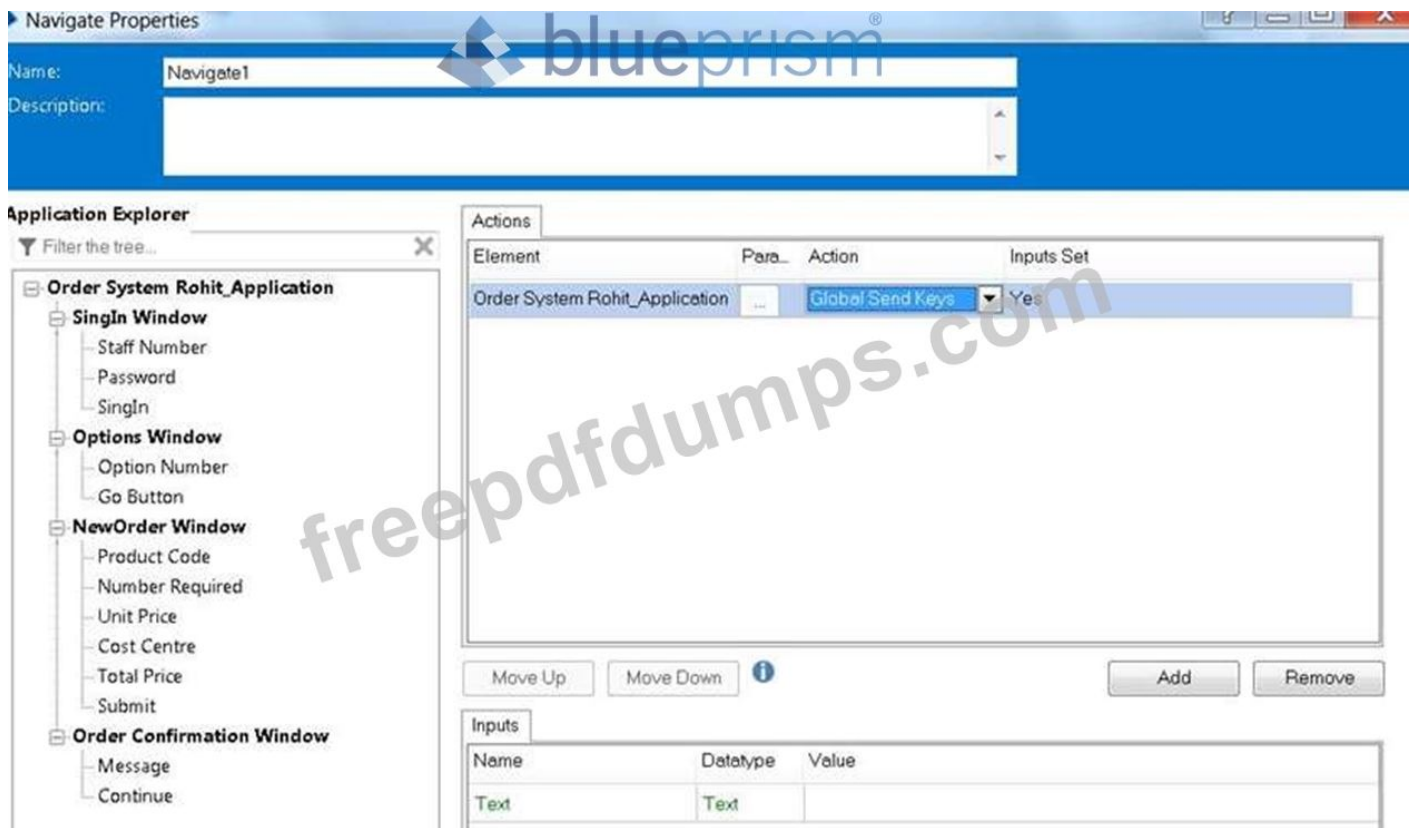
B. Read Stage

C. Write Stage

D. Navigate Stage

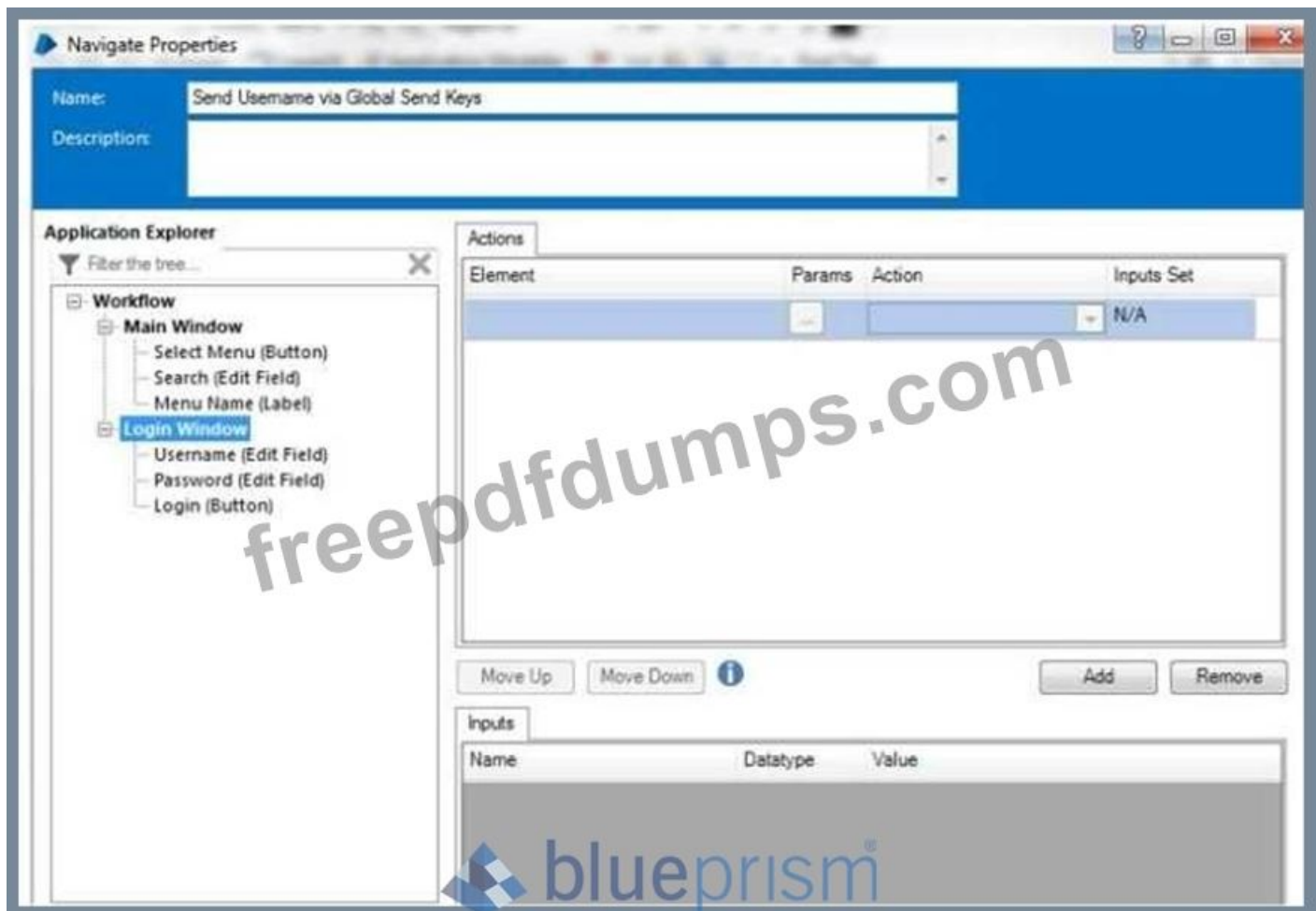
Answer: D ([LEAVE A REPLY](#))

Reason: Global send key events and global keys are not passed through the navigate stage.



NEW QUESTION: 5

A business object needs to use a Global Send Keys stage to populate the User Name field in an application entitled Workflow. The application is in focus and cursor is in the User Name field. In order to configure the Global Send Keys, which element needs to be placed in the Element field of the stage below?



- A. Workflow
- B. Main Window
- C. Login Window
- D. Username (Edit Field)

Answer: D (LEAVE A REPLY)

Explanation

Reason: As we need to pass the values in the username so the values of username to be passed only in the username element. As Rest other options are having only the outer area of the spied application.

NEW QUESTION: 6

An action called 'Get Account details' fails with the following exception detail:

Internal : Failed to perform step 1 in Read Stage 'Read Details' on page 'Get Account Details' - Not Connected

Which of the following could cause this exception?

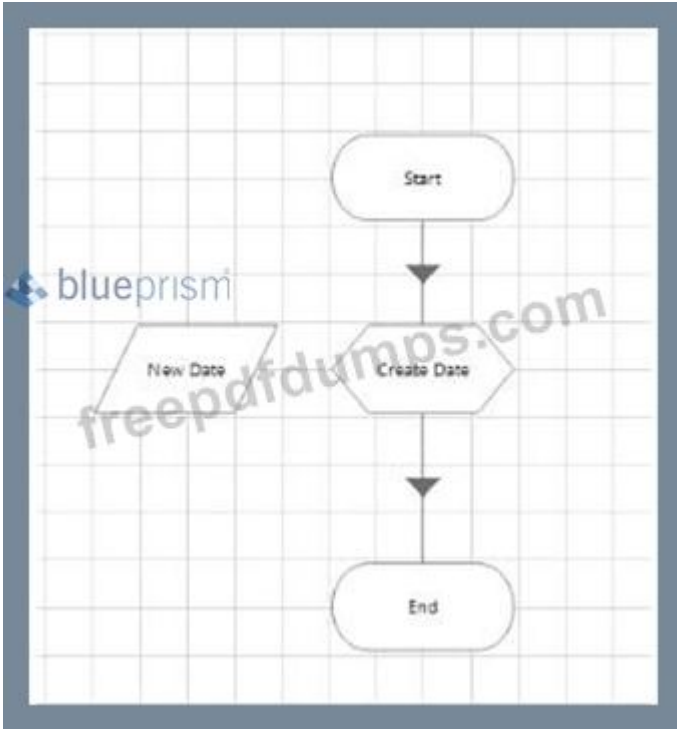
- A. An internal error always indicates a problem with the Blue Prism product. The Blue Prism support team should be contacted for assistance
- B. The Business Object has not been coupled to the application by either launching it or attaching to it.
- C. The Read Details action is not connected to another stage so cannot execute.

D. The Read Details action in the Get Account Details Business Object no longer exists but the Process is attempting to use it.

Answer: C ([LEAVE A REPLY](#))

NEW QUESTION: 7

A process contains only 4 stages. Study the following process flow.



The data item New Date is a date data item with no initial value.

The calculation stage is configured as follows:

Calculation Properties

Name:	Create Date
Description:	

Expression

```
DateAdd(5, 1, Today())
```

Validate Evaluate Expression Store Result In New Date

What will happen when you execute the Create Date stage?

- A. 1 week will be added to today's date and the result stored in the New Date data item.
- B. 1 month will be added to today's date and the result stored in the New Date data item.
- C. The process will throw an exception as the New Date data item is null.
- D. 5 days will be added to today's date and the result stored in the New Date data item.

Answer: B (LEAVE A REPLY)

NEW QUESTION: 8

The Order System application has been successfully launched and Blue Prism has navigated the application to the following screen:



There is a requirement to ensure this screen is in focus before any further interfacing is done with the screen.

Which is the correct configuration to ensure the New Order screen is in focus?

A)

Name	Description
Name	Focus
Description	

Element	Params	Action	Inputs S...
Order System		Activate Application	No

Name	Datatype	Value
Path	Text	
CommandLineParams	Text	
WorkingDirectory	Text	

B)

Navigate Properties

blueprism®

Name: Focus

Description:

Application Explorer

Filter the tree...

- Order System
 - Log in Window
 - Staff Number
 - Password
 - Press Sign in
 - Options Windows
 - Option Number
 - Go Button
 - New Order Window
 - Product Code
 - Number Required
 - Unit Price
 - Cost Centre
 - Submit Order
 - Order Conf Window
 - Order Reference
 - Continue

Actions

Element	Params	Action	Inputs S...
Order System	...	Attach	Yes

Move Up Move Down Add Remove

Inputs

Name	Datatype	Value
Window Titles (as Collection)	Collection	
Window Title	Text	
Process Name	Text	

C)

Name:

Description:

Application Explorer

Filter the tree...

- [-] Order System
 - Log in Window
 - Staff Number
 - Password
 - Press Sign in
 - [-] Options Windows
 - Option Number
 - Go Button
 - [-] New Order Window
 - Product Code
 - Number Required
 - Unit Price
 - Cost Centre
 - Submit Order
 - [-] Order Conf Window
 - Order Reference
 - Continue

Actions

Element	Params	Action	Inputs S..
New Order Window	...	Click Window	Yes

Inputs

Name	Datatype	Value
X	Number	
Y	Number	
Move Button	Text	



D)

Navigate Properties ? - □ ×

Name:

Description:

Application Explorer

Filter the tree...

- [-] Order System
 - Log in Window
 - Staff Number
 - Password
 - Press Sign in
 - [-] Options Windows
 - Option Number
 - Go Button
 - [-] **New Order Window**
 - Product Code
 - Number Required
 - Unit Price
 - Cost Centre
 - Submit Order
 - [-] Order Conf Window
 - Order Reference
 - Continue

Actions

Element	Params	Action	Inputs S..
New Order Window	...	Activate Application	N/A

Move Up Move Down i Add Remove

Inputs

Name	Datatype	Value

- A. Exhibit A
- B. Exhibit B
- C. Exhibit C
- D. Exhibit D

Answer: D (LEAVE A REPLY)

Explanation

For window application to ensure the new screen is in focus We need to activate the New screen as not the application

NEW QUESTION: 9

Study the process flow below:

Account Details <> ""

C:

"Case ID" <> ""

D:

[Case ID] <> ""

A. Option A

B. Option D

C. Option B

D. Option C

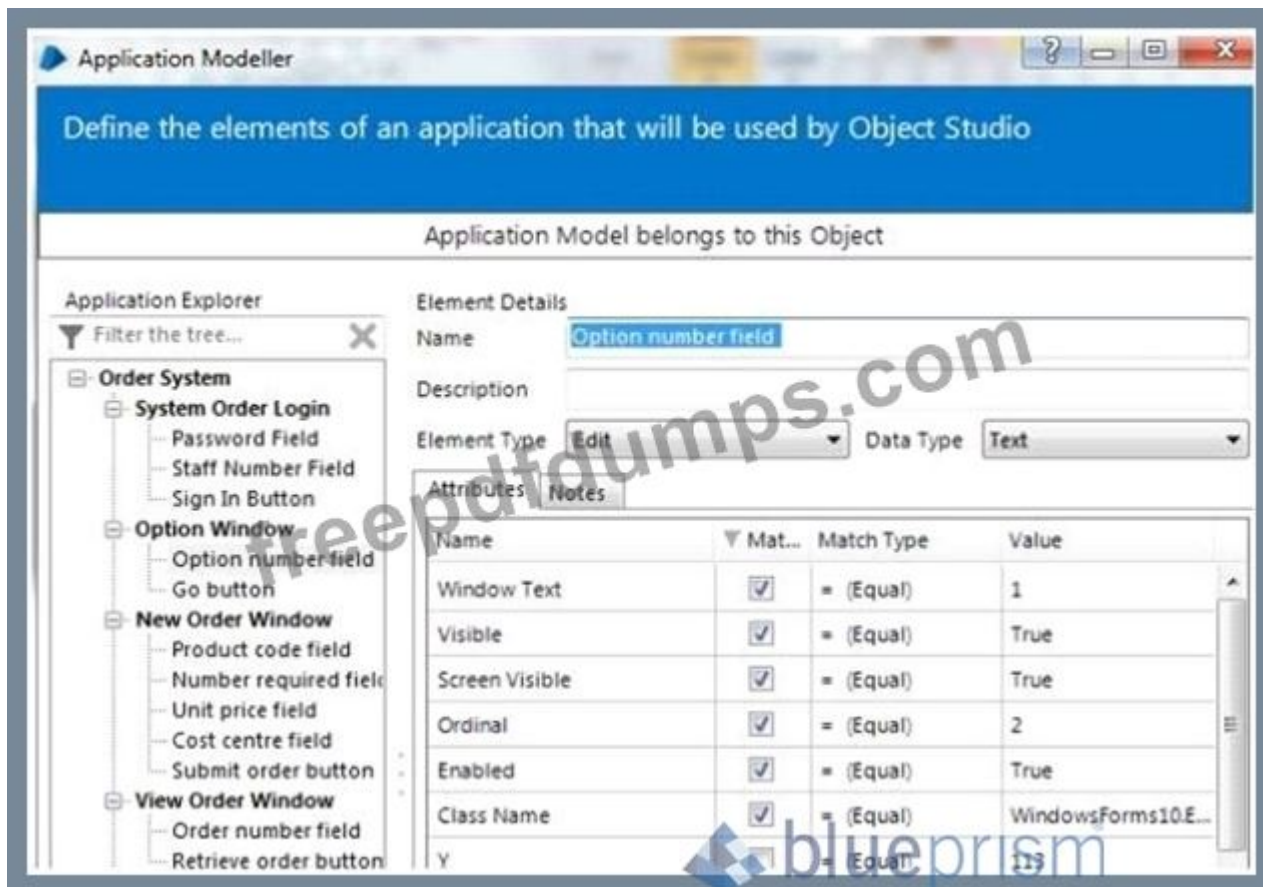
Answer: B ([LEAVE A REPLY](#))

NEW QUESTION: 10

When entering an option within the Training Order system the relevant option number is entered into the Option number field as below The Option number input field has been spied in Blue Prism:



The following attribute set has been returned by Application Modeller:



Which Attribute can be un-ticked to ensure consistent visibility of the element to Blue Prism?

- A. Window Text
- B. Visible
- C. Screen Visible
- D. Class Name

Answer: (SHOW ANSWER)

Reason: As the window text is not unique when the value is changed and bp is able to spied at time a error would come. So there is no use of window text.

NEW QUESTION: 11

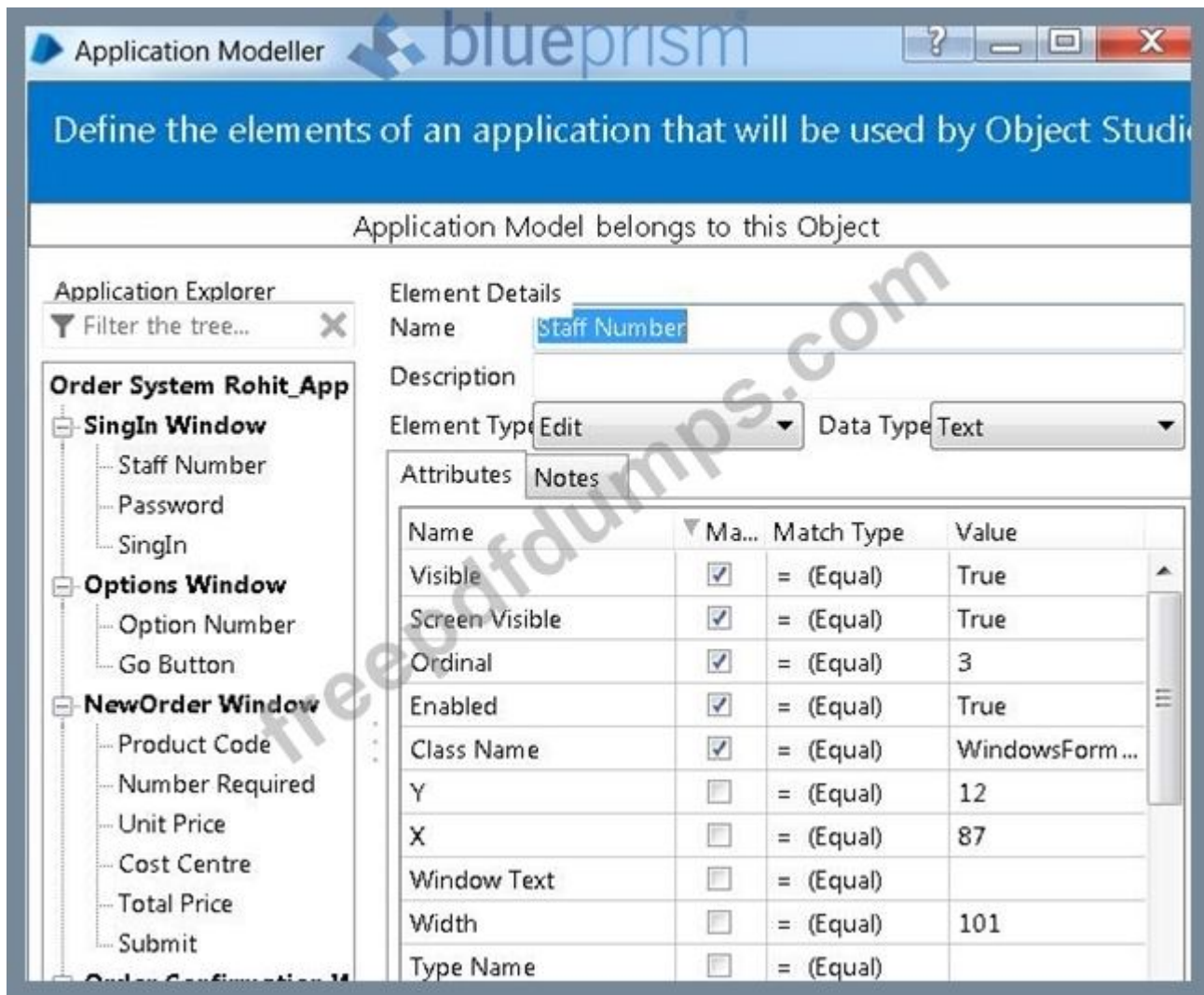
When considering an element's attributes in Application Modeller which of the following statements are true? (select all that apply)

- A. The attributes are provided to Blue Prism by the Target System
- B. The initial selection of attributes made by Blue Prism will always be the optimum attribute set for the element
- C. The list of attributes may vary from application type to application type
- D. Selected attributes are shown as ticks in the Match column of Application Modeller

Answer: (SHOW ANSWER)

Reason: A) when spying the application, blueprism fetch all the elements of the target application only, blue prism doesn't provide any elements of its own.

C) Attributes are vary from application type to type. Attributes are different for windows, browsers, mainframe, java.

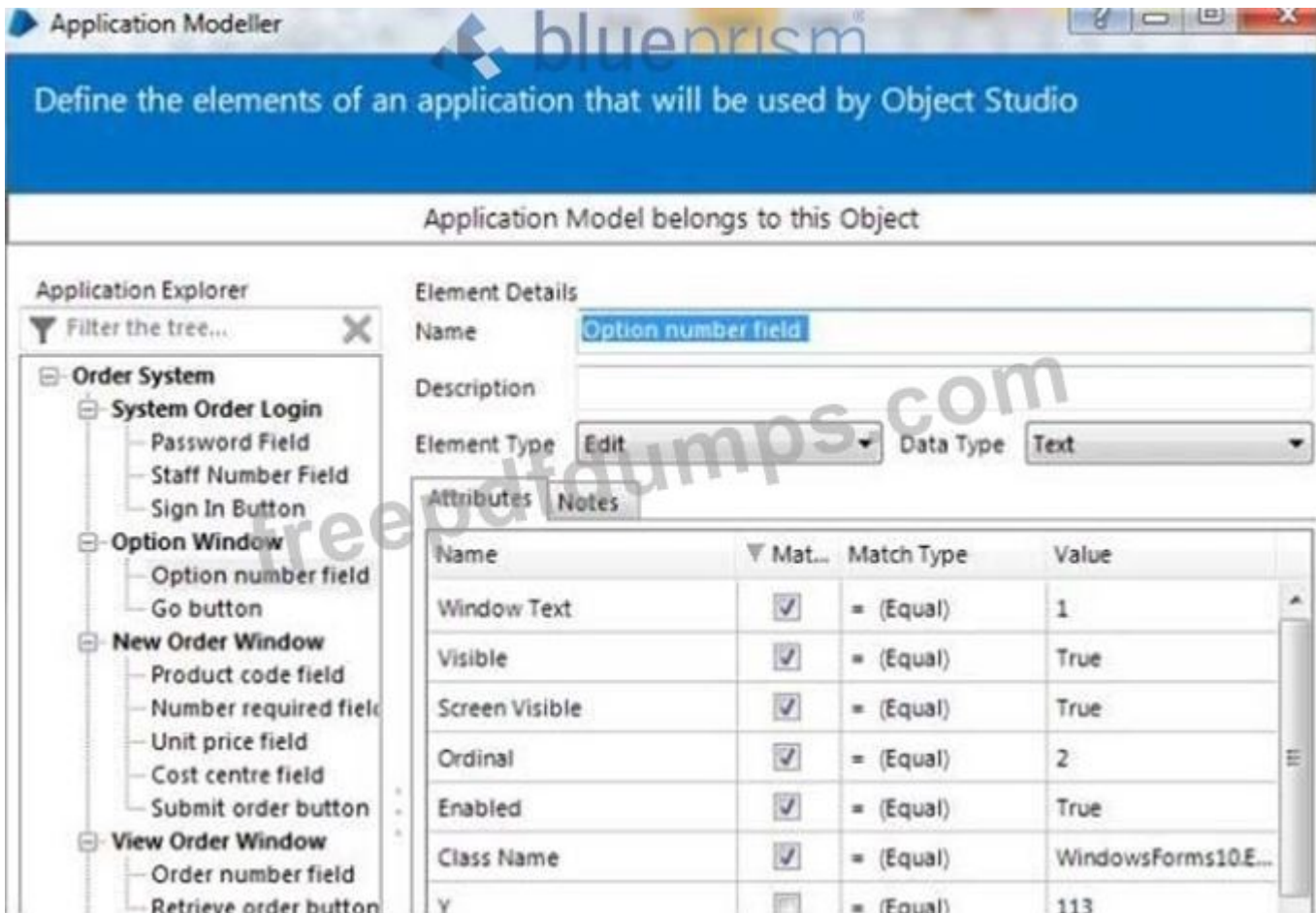


NEW QUESTION: 12

When entering an option within the Training Order system the relevant option number is entered into the Option number field as below. The Option number input field has been spied in Blue Prism:



The following attribute set has been returned by Application Modeller:



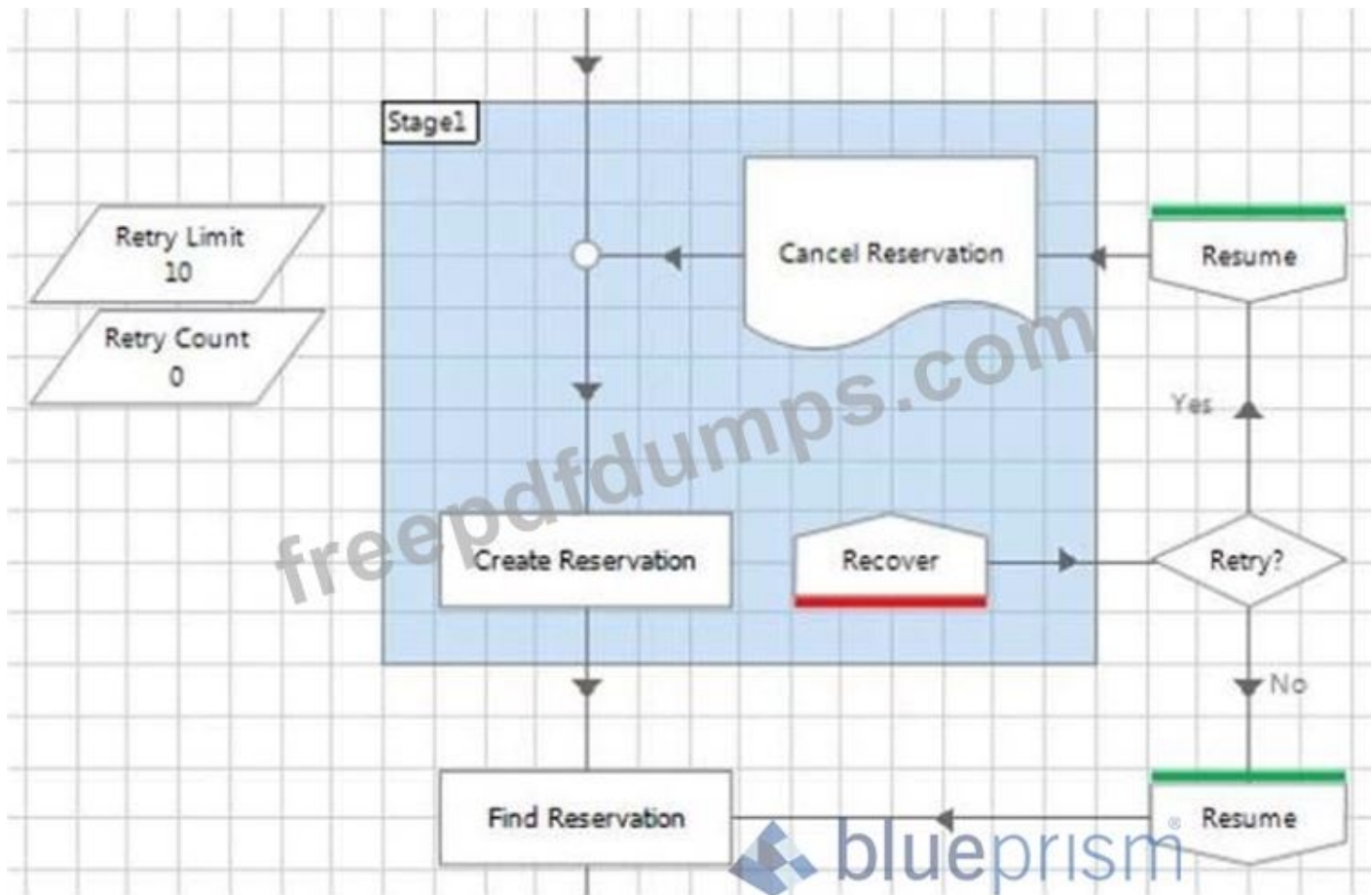
Which Attribute can be un-ticked to ensure consistent visibility of the element to Blue Prism?

- A. Screen Visible
- B. Class Name
- C. Visible
- D. Window Text

Answer: D ([LEAVE A REPLY](#))

NEW QUESTION: 13

Study the following image showing part of the flow within a process:



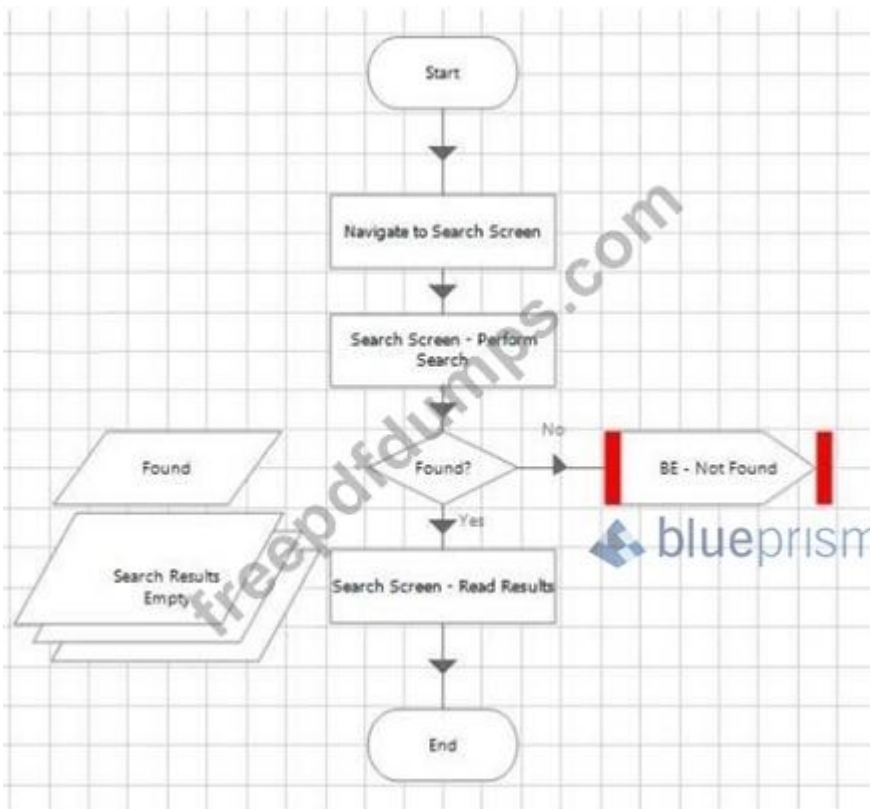
What problems do you see with the process flow? (select 2 responses)

- A. The Retry Count is not being incremented for each retry.
- B. There is a missing Resume stage on one of the routes through the flow.
- C. There is a missing Recover stage on one of the routes through the flow.
- D. If an exception is thrown in the Cancel Reservation page and is allowed to bubble up to be caught by the Recover stage, the Create Reservation action won't be retried.

Answer: ([SHOW ANSWER](#))

NEW QUESTION: 14

Consider the following process flow from a sub-page of a process:



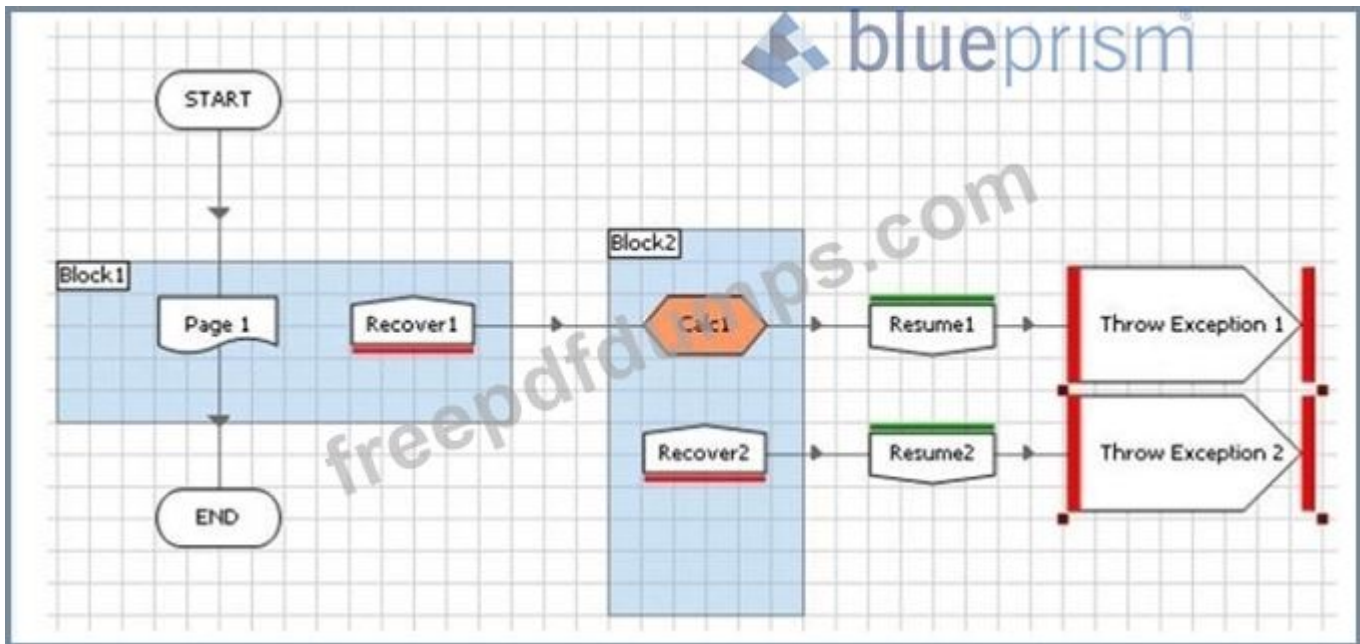
What is the problem with this sub-page flow?

- A. The sub-page process flow is missing any retry exception handling that should exist where a process calls object actions that interface with an application.
- B. For better visibility of the process logic the flow steps shown in the image should be on the main page rather than in a sub-page of the process.
- C. The exception stage within the flow should be removed and replaced with an End stage that returns the found data item as an output parameter.
- D. There is nothing wrong with the sub-page flow shown in this image.

Answer: ([SHOW ANSWER](#))

NEW QUESTION: 15

Examine the Process below:



An error has been encountered on Page 1 and the exception has bubbled up to be recovered in the Recover stage. If there is an error in the Calc 1 stage which path will the Process take?

- A. The Error will cause the Process to terminate
- B. The Error will cause the Process to jump to the End Stage
- C. The Process will continue to the Resume 1 Stage
- D. The Error will be recovered in the Recover2 Stage

Answer: ([SHOW ANSWER](#))

NEW QUESTION: 16

You identify an element in Application Modeller and it highlights uniquely and can be used in your object flow diagram. The next day you find that Blue Prism cannot no longer identify the same element, your object flow is giving you 'Element not found' exceptions.

Which of the following statements is true?

- A. This suggests that Best Practice exception handling has not been implemented in the object. A retry loop around the object stages that are using the element will probably fix the problem.
- B. This must be an environment issue. The Blue Prism environment must be consistent and persistent, and an element that worked one day and does not work the next day suggests the environment is changeable. The IT team supporting the environment needs to be contacted to fix the problem.
- C. It is common for consistency issues to be found during configuration/development testing. The most likely cause is that an attribute has been selected for the element that is changeable, such as a window title with a date, or a URL. The developer needs to ensure that any changeable attributes are unticked.
- D. The Blue Prism product support team should be contacted to report the issue. This signifies an inconsistency in how the Blue Prism product is working which needs to be fixed.

Answer: C ([LEAVE A REPLY](#))

Valid AD01 Dumps shared by Actual4test.com for Helping Passing AD01 Exam!
Actual4test.com now offer the **newest AD01 exam dumps**, the Actual4test.com AD01 exam **questions have been updated** and **answers have been corrected** get the **newest** Actual4test.com AD01 dumps with Test Engine here:
https://www.actual4test.com/AD01_examcollection.html (189 Q&As Dumps, **30%OFF Special Discount: Freepdfdumps**)

NEW QUESTION: 17

You identify an element in Application Modeller but when you highlight or use that element Blue Prism gives you an error message saying that duplicate elements were found.

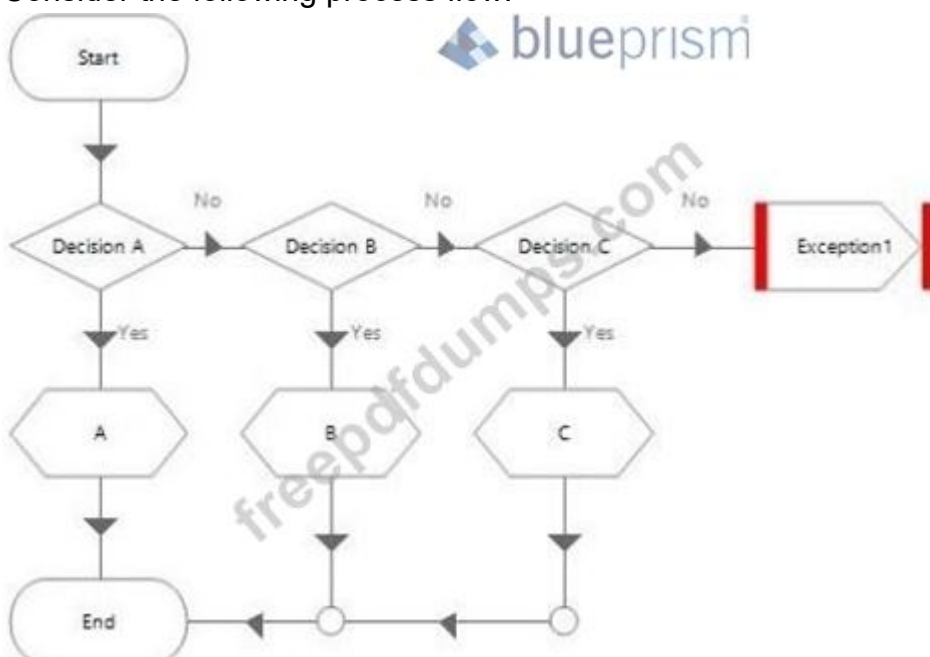
Which of the following statements is true?

- A.** It is common for duplicate elements to be found based upon the attributes that are ticked by default using the Blue Prism product. Time needs to be spent experimenting with the attribute ticks until a unique, reliable, and consistent selection of attributes are found.
- B.** It will not be possible to interface with the element in a unique way. You will need to use Surface Automation techniques for this element.
- C.** A code stage interface will need to be created and used for this application, this will give you more flexibility to interact with the application elements.
- D.** You will need to make the attributes you have selected dynamic. This will allow your flow to loop around, incrementing the attribute value until the correct element is found and used.

Answer: D (LEAVE A REPLY)

NEW QUESTION: 18

Consider the following process flow:



Decision "A" properties are:

$$40 + 10 * 30 = 150$$

Decision "B" properties are:

$$\text{Sqrt}(100 - 19) = 9$$

Decision "C" properties are:

$$3 \wedge 4 = 27$$

What will happen when the process runs?

- A. The flow will pass through calculation stage "A"
- B. An exception will be thrown
- C. The flow will pass through calculation stage "B"
- D. The flow will pass through calculation stage "C"

Answer: ([SHOW ANSWER](#))

NEW QUESTION: 19

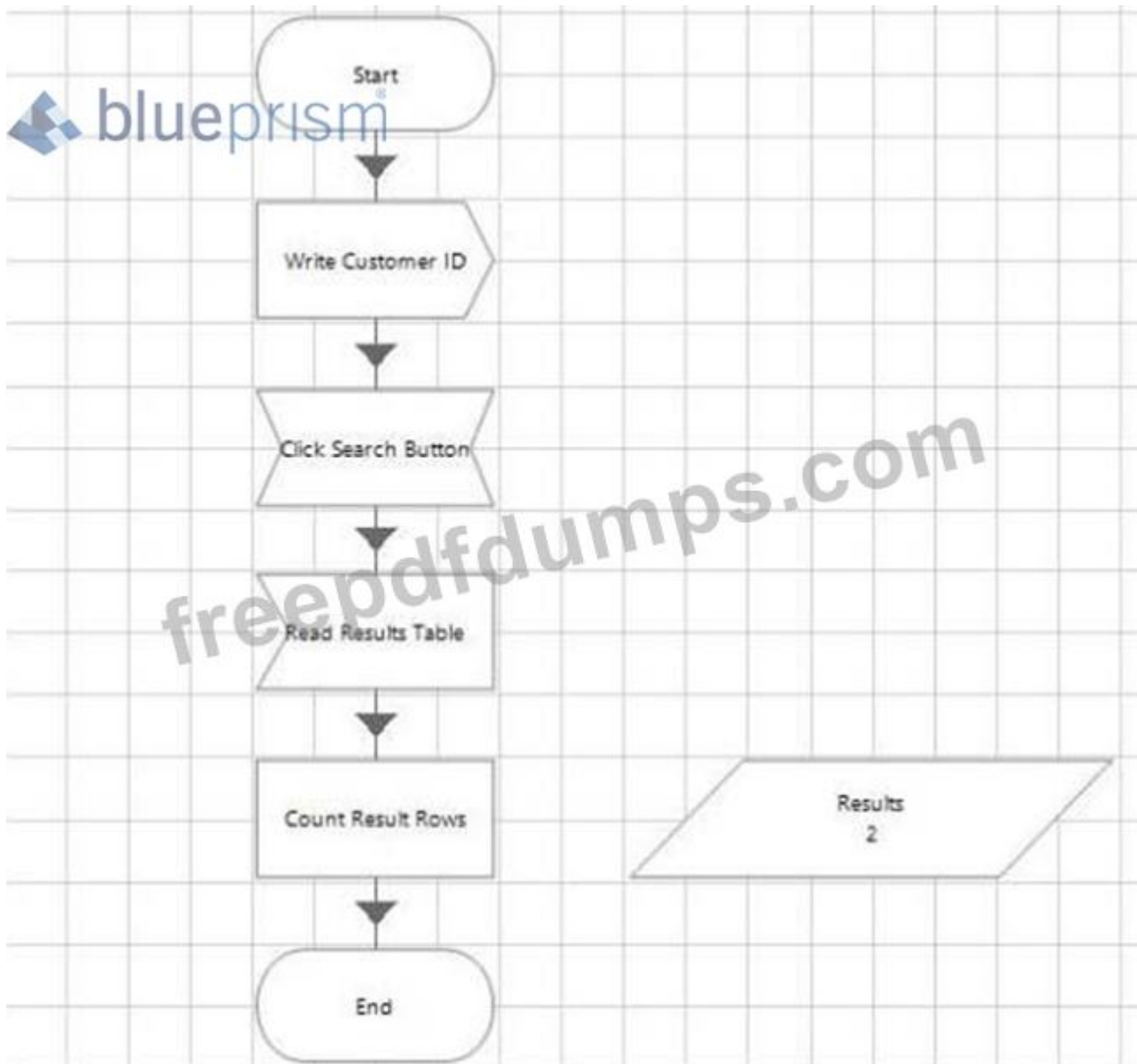
How many Start Stages can a sub-page in a Process have?

- A. 1
- B. Any Number
- C. 2
- D. 0

Answer: B ([LEAVE A REPLY](#))

NEW QUESTION: 20

Consider the following flow in an object:



Which of the following statements are true?

- A. There just needs to be a wait stage after the start stage to correct this action.
- B. There should be an intelligent wait stage after the start stage and after any stage that cause the application we are interfacing with to change
- C. There should be a wait stage after every stage in this flow (i.e. after the navigate, read, write stages)
- D. If during testing in object studio this flow works no additional wait stages should be added as they will slow the interface down.

Answer: B ([LEAVE A REPLY](#))

NEW QUESTION: 21

If you change a session variable when will the new value be available to the process?

- A. Immediately
- B. Next time a new case is taken from a WQ
- C. Next time resource PC starts

D. Next time the process starts

Answer: ([SHOW ANSWER](#))

Explanation

Reason: It updates the values immediately.

NEW QUESTION: 22

The Work Queue "Customer Onboarding" has a number of Pending Items which may be tagged as "Domestic",

"Retail" or "Business" There is also a tag for the 8 digit product code formatted as "Product Code: {product code}" e.g. Product Code: CA123456.

What is the correct configuration to get the next item from the queue that:

* Isn't applying for a loan product i.e. Product Code doesn't begin with "LN" And

* Is a domestic customer

A. Configure "Domestic; -Product Code: I_N"" in the Tag Filter parameter

B. Configure "Domestic + [Product Code] <> LN*" in the Tag Filter parameter

C. Configure 'Domestic and Product Code <> LN?' in the Tag Filter parameter

D. Configure "Domestic; -Product Code: LN?" in the Tag Filter parameter

Answer: ([SHOW ANSWER](#))

NEW QUESTION: 23

How can a session variable value be updated when a process is running? (select all that apply)

A. By using the Internal - Session Variables business object.

B. By pausing the Session Variables work queue.

C. By updating the value in Credential Manager.

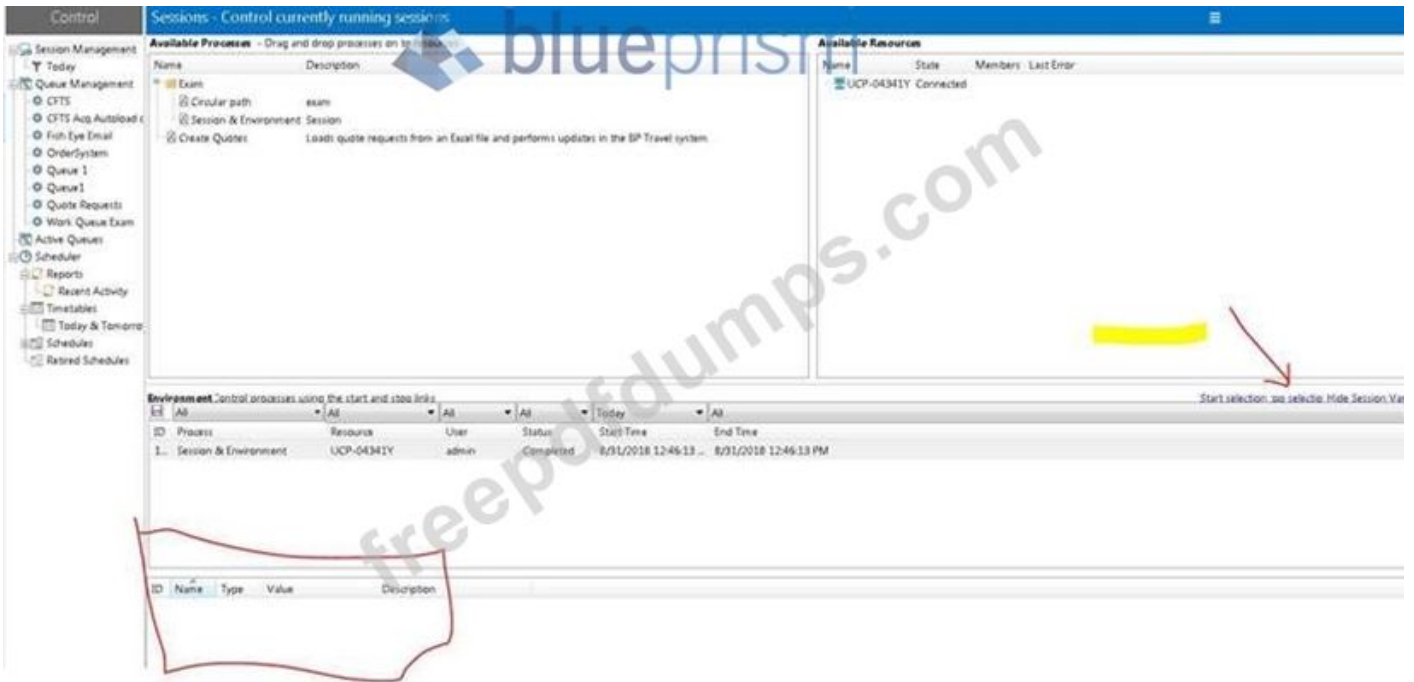
D. By updating the value in Control Room.

Answer: D ([LEAVE A REPLY](#))

Explanation

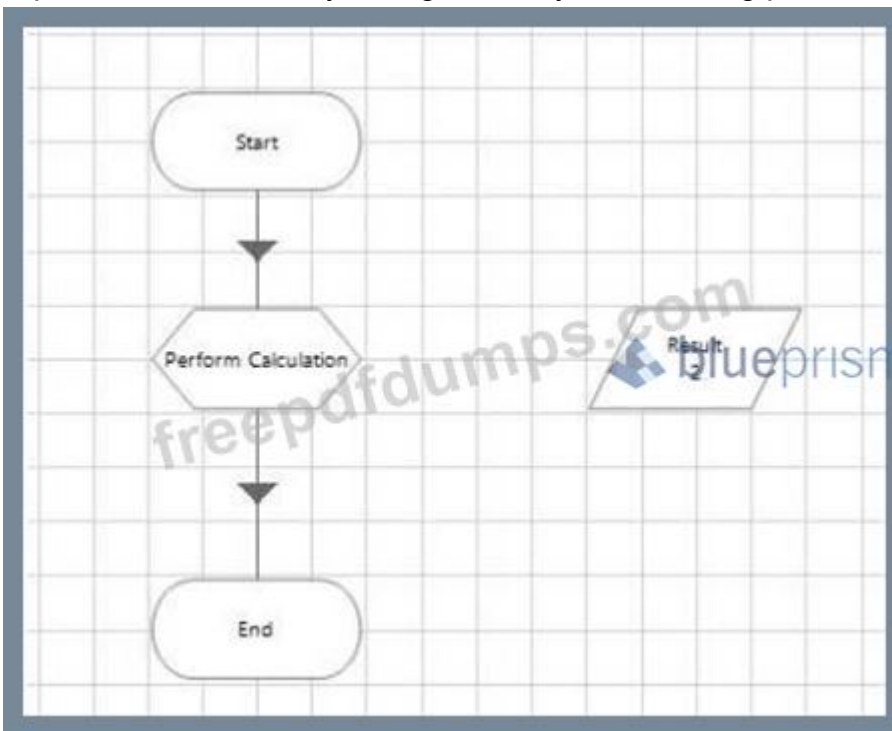
Reason: Session variable values to be update only in the Control room.

Below is the reference.



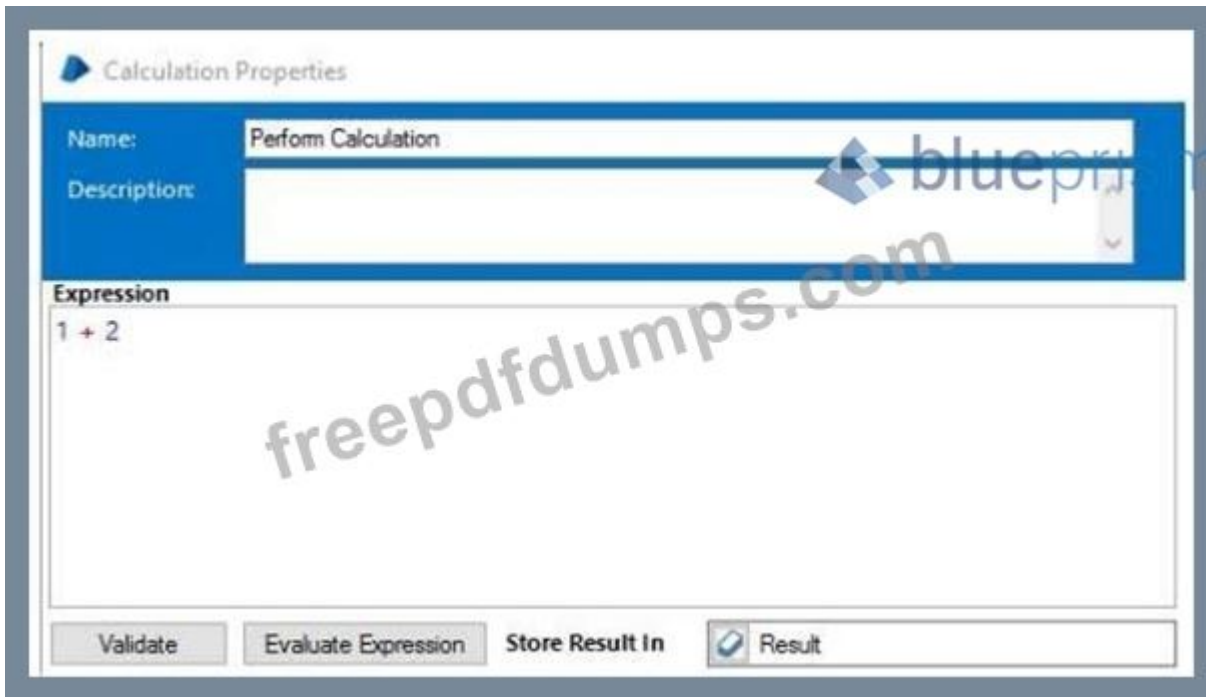
NEW QUESTION: 24

A process contains only 4 stages. Study the following process flow:



The data item 'Result' is a number data item with an initial value of 2.

The calculation stage is configured as follows:



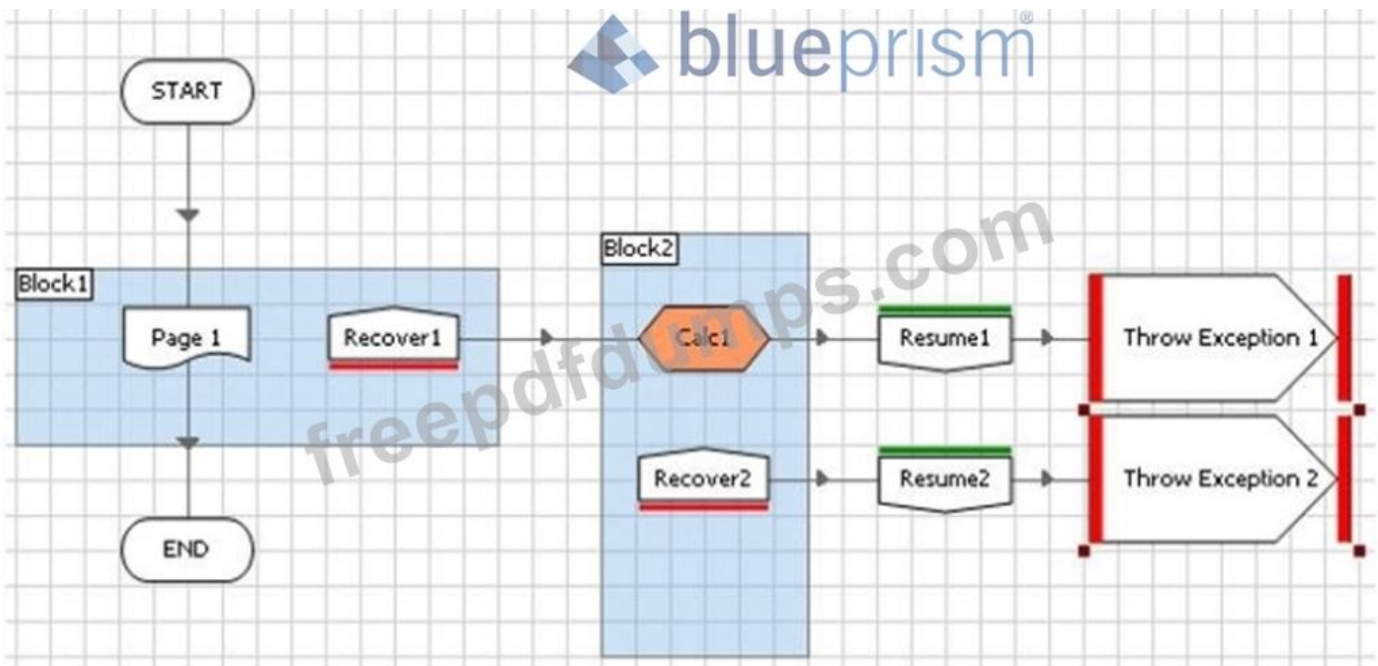
Following the execution of the Perform Calculation stage, which of the following is true?

- A. The process will throw an exception
- B. None of these statements are correct
- C. The data item Result will contain 3
- D. The data item Result will contain 5

Answer: ([SHOW ANSWER](#))

NEW QUESTION: 25

Examine the Process below:



An error has been encountered on Page 1 and the exception has bubbled up to be recovered in the Recover stage. If there is an error in the Calc 1 stage which path will the Process take?

- A. The Error will cause the Process to jump to the End Stage

- B. The Error will be recovered in the Recover2 Stage
- C. The Error will cause the Process to terminate
- D. The Process will continue to the Resume 1 Stage

Answer: C ([LEAVE A REPLY](#))

NEW QUESTION: 26

Which of the following indicates a case in a Work Queue is an exception?



B)



C)



D)

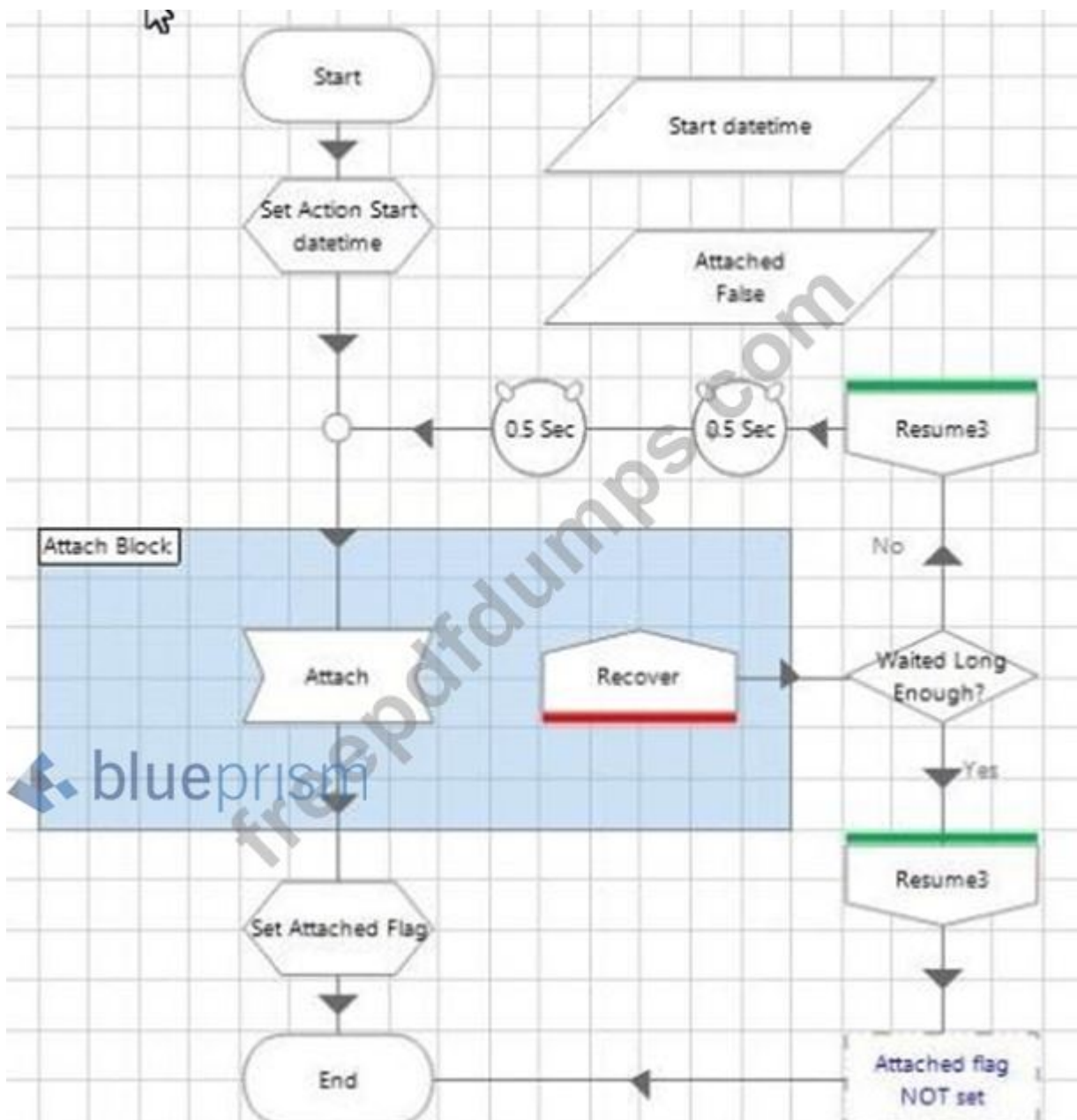


- A. Option A
- B. Option B
- C. Option C
- D. Option D

Answer: D ([LEAVE A REPLY](#))

NEW QUESTION: 27

Consider the following process flow:



What is the problem with this flow?

- A. There is nothing wrong with this flow.
- B. The exception handling in this flow can be removed because an Attach action in a navigate stage should always work if configured correctly
- C. The Attach Block should be enlarged to also include the Waited Long Enough decision stage.
- D. The flow contains a recover stage and a route from it without a resume stage. This will cause internal errors on future exceptions thrown in the same session.
- E. The 0.5 second wait stage should be removed so that the retries can be performed at full speed.

Answer: D (LEAVE A REPLY)

Explanation

Reason: Nothing is wrong with this flow as there are proper block and recover and decision stages are used.

NEW QUESTION: 28

A Blue Prism solution interfaces with an internet application called HappyWeb. There is a test website available for development, and a training site available for user acceptance testing, and there is the production site available for processing live cases in HappyWeb.

Which of the following is true?

- A. A local text file should be used to easily configure the details of the HappyWeb website to be used in each Blue Prism environment.
- B. All development and testing MUST be done using the production site. This is because the test and training websites might not mirror production exactly.
- C. An Environment variable should be used to store the HappyWeb URL.
- D. Three different versions of object that launches the HappyWeb website will need to be created and maintained, one for each environment.

Answer: B ([LEAVE A REPLY](#))

NEW QUESTION: 29

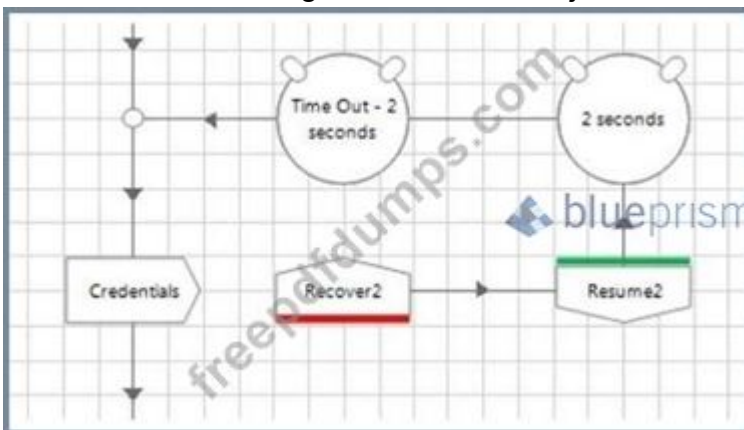
Which of the following statements regarding the use of Work Queues are correct? (select 2 responses)

- A. Control Room allows filtering of the displayed queue items using exact tags and by using wildcards
- B. Work Queue item Status can only be set to Completed or Exception
- C. Wildcards are not allowed in the Tag Fitter property of the Work Queues business object Get Next Item action
- D. Tags can be used allow flexibility in the order items are worked within a single Work Queue

Answer: A,B ([LEAVE A REPLY](#))

NEW QUESTION: 30

Consider the following flow within an Object Studio action:



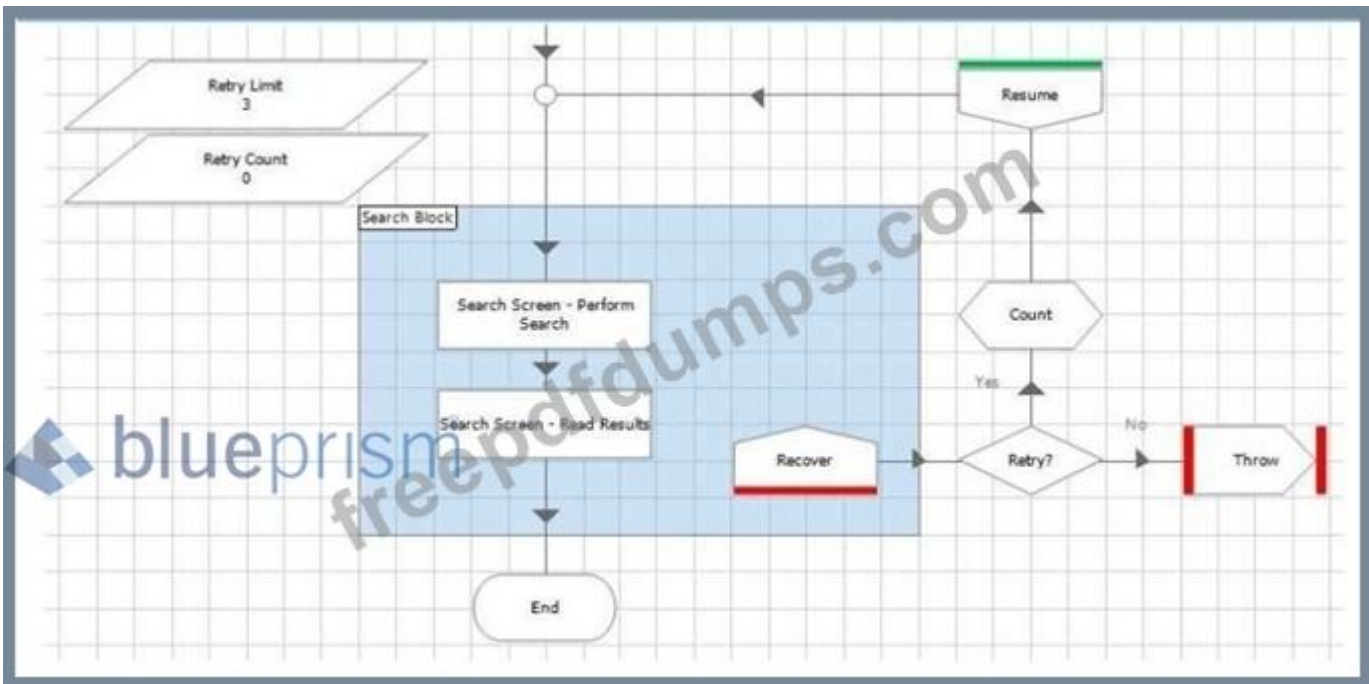
The developer of this flow found that writing some credentials to the target application sometimes failed with an exception even though the element exists on the screen. He found that simply catching the exception, waiting for 2 seconds and then retrying fixed the problem.

What problems do you see within the flow? (select 2 responses)

- A. A block has not been placed around the Write stage and the Recover stage, meaning the credentials action could be unnecessarily retried if another stage further into this action throws an exception.
- B. The credentials stage is a read stage not a write stage.
- C. There is a potential for an infinite loop if the 'Credentials' stage keeps throwing an exception for some unforeseen reason.
- D. There is not a Resume stage following the timeout of the Wait stage

Answer: A,B ([LEAVE A REPLY](#))

NEW QUESTION: 31



What is wrong with the flow shown in the image?

- A. Sub-pages should not have retry logic, exception handling should be in the object level rather than in the process.
- B. The resume stage must also be within the exception block
- C. The retry loop logic does not include any navigation after the resume stage to ensure the application is ready to try the 'Search Screen -Perform Search' action again.
- D. The retry loop logic shown in the image is incorrect because it uses multiple action stages. There should be a retry loop around every action.

Answer: ([SHOW ANSWER](#))

Explanation

As per the process template the resume there should be another action or page after the resume stage.

questions have been updated and answers have been corrected get the newest

Actual4test.com AD01 dumps with Test Engine here:

https://www.actual4test.com/AD01_examcollection.html (189 Q&As Dumps, 30%OFF Special Discount: **Freepdfdumps**)

NEW QUESTION: 32

When considering an element's attributes in Application Modeller which of the following statements are true?

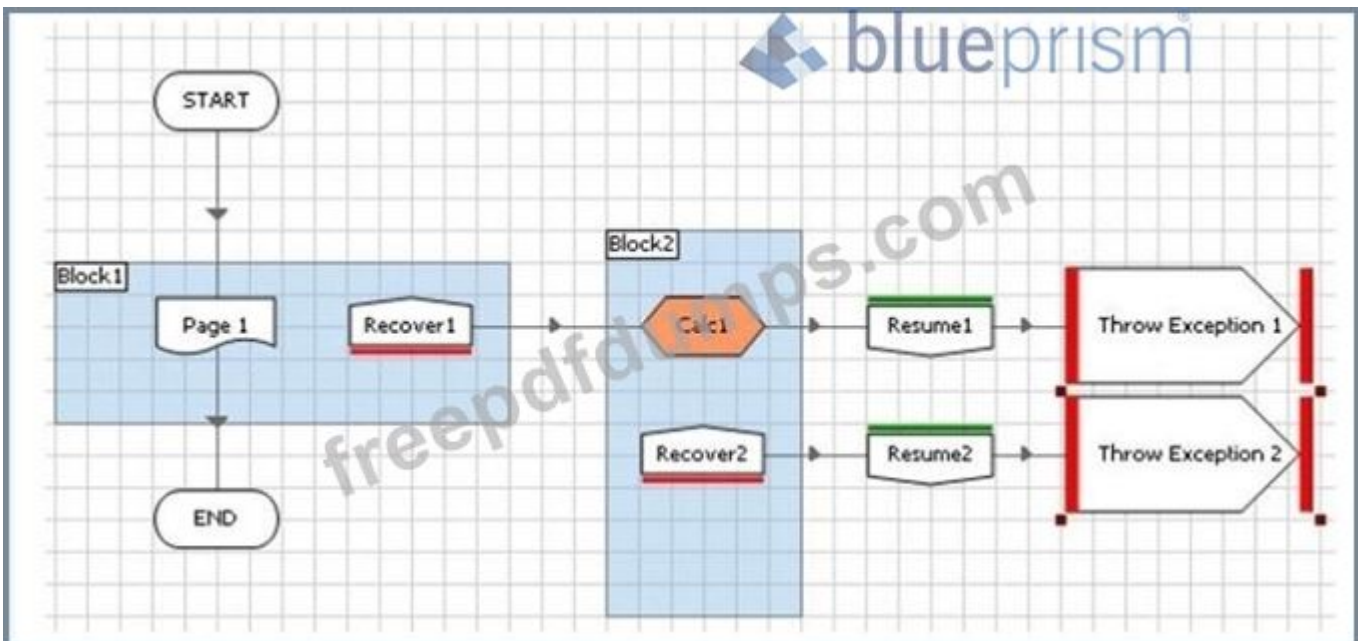
(select all that apply)

- A. Selected attributes are shown as ticks in the Match column of Application Modeller
- B. The list of attributes may vary from application type to application type
- C. The attributes are provided to Blue Prism by the Target System
- D. The initial selection of attributes made by Blue Prism will always be the optimum attribute set for the element

Answer: A ([LEAVE A REPLY](#))

NEW QUESTION: 33

Examine the Process below:



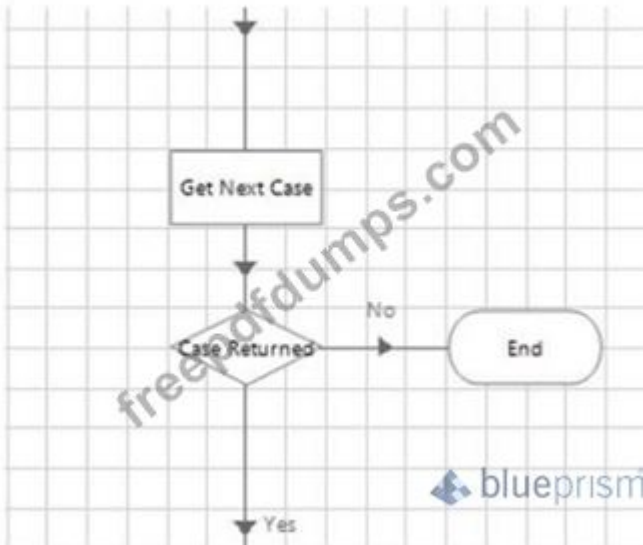
An error has been encountered on Page 1 and the exception has bubbled up to be recovered in the Recover 1 stage. If there is an error in the Calc 1 stage which path will the Process take?

- A. The Error will cause the Process to terminate
- B. The Process will continue to the Resume 1 Stage
- C. The Error will cause the Process to jump to the End Stage
- D. The Error will be recovered in the Recover2 Stage

Answer: A ([LEAVE A REPLY](#))

NEW QUESTION: 34

Study the process flow below:



The outputs for the Get Next Case are configured below:

The screenshot shows the 'Action Properties' window for the 'Get Next Case' action. The 'Business Object' is 'Work Queues' and the 'Action' is 'Get Next Item'. The 'Outputs' tab is selected, showing a table of output properties:

Name	Data Type	Store In
Item ID	Text	Case ID
Data	Collection	Account Details
Status	Text	
Attempts	Number	<input checked="" type="checkbox"/>

What is the correct configuration of the Expression in the "Case Returned " decision stage?

A)

Case ID <> ""

B)

Account Details <> ""

C)

"Case ID" <> ""

D)

[Case ID] <> ""

- A. Option A
- B. Option D
- C. Option C
- D. Option B

Answer: B ([LEAVE A REPLY](#))

NEW QUESTION: 35

Which of the following statements regarding the use of Work Queues are correct? (select 2 responses)

- A. Tags can be used allow flexibility in the order items are worked within a single Work Queue
- B. Wildcards are not allowed in the Tag Filter property of the Work Queues business object Get Next Item action
- C. Control Room allows filtering of the displayed queue items using exact tags and by using wildcards
- D. Work Queue item Status can only be set to Completed or Exception

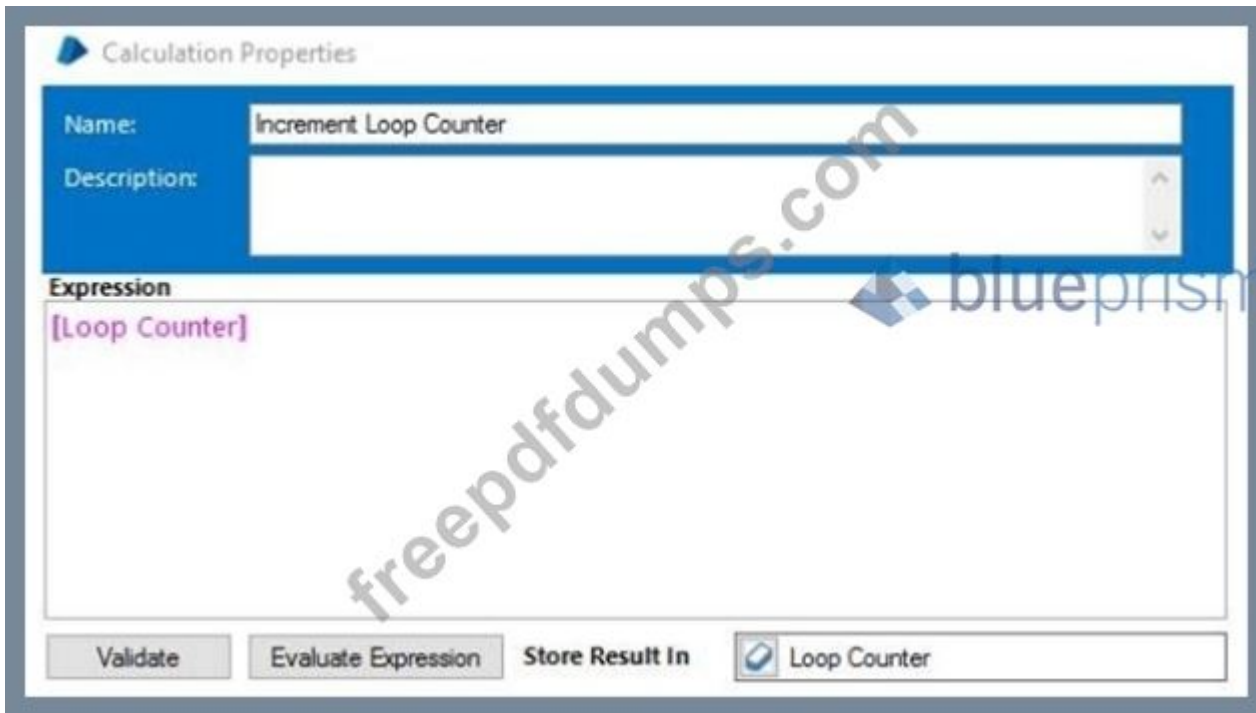
Answer: A,C ([LEAVE A REPLY](#))

NEW QUESTION: 36

The data item "Loop Counter" is a number data item and has an initial value of 0. The data item "Max Loops" is a number data item and has an initial value of 10.

The two stages are configured as follows:

The screenshot shows the 'Decision Properties' dialog box. The 'Name' field is 'Loop Again?'. The 'Description' field is empty. The 'Expression' field contains the text '[Loop Counter] < [Max Loops]'. There are 'Validate' and 'Evaluate Expression' buttons at the bottom. A watermark 'blueprism' and 'freepdfdumps.com' are visible over the dialog.



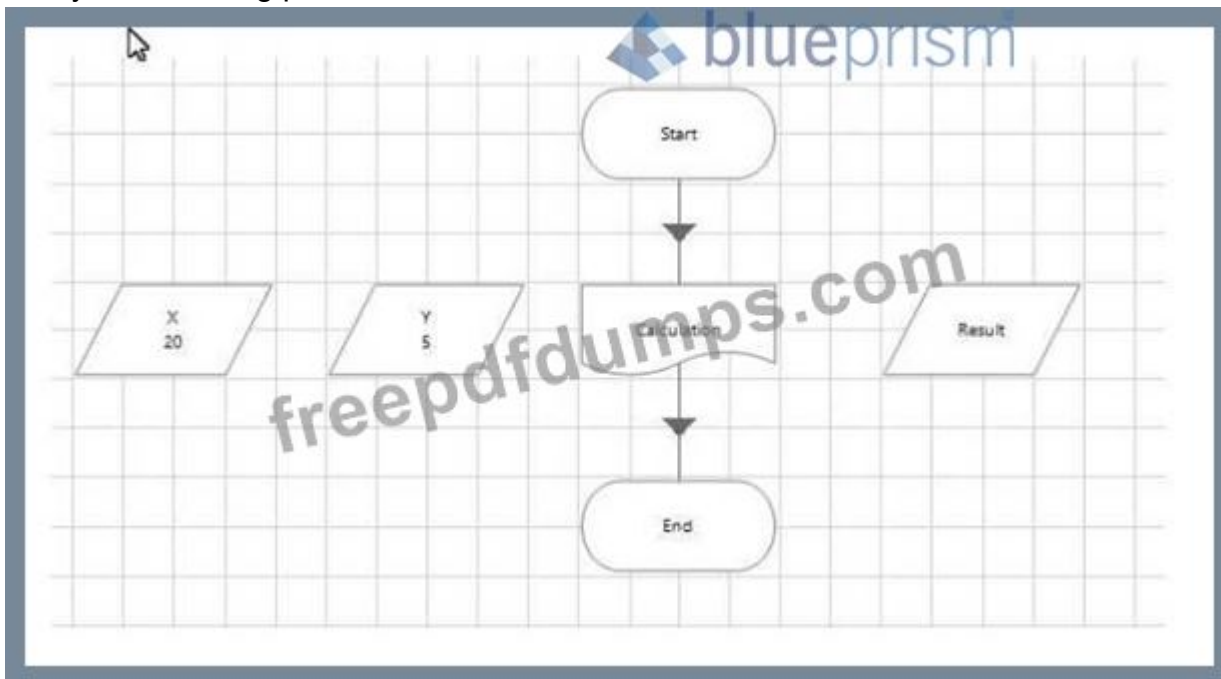
How many times will the Loop Again stage be executed when the page is executed?

- A. 9
- B. 10
- C. The loop will be infinite
- D. 11

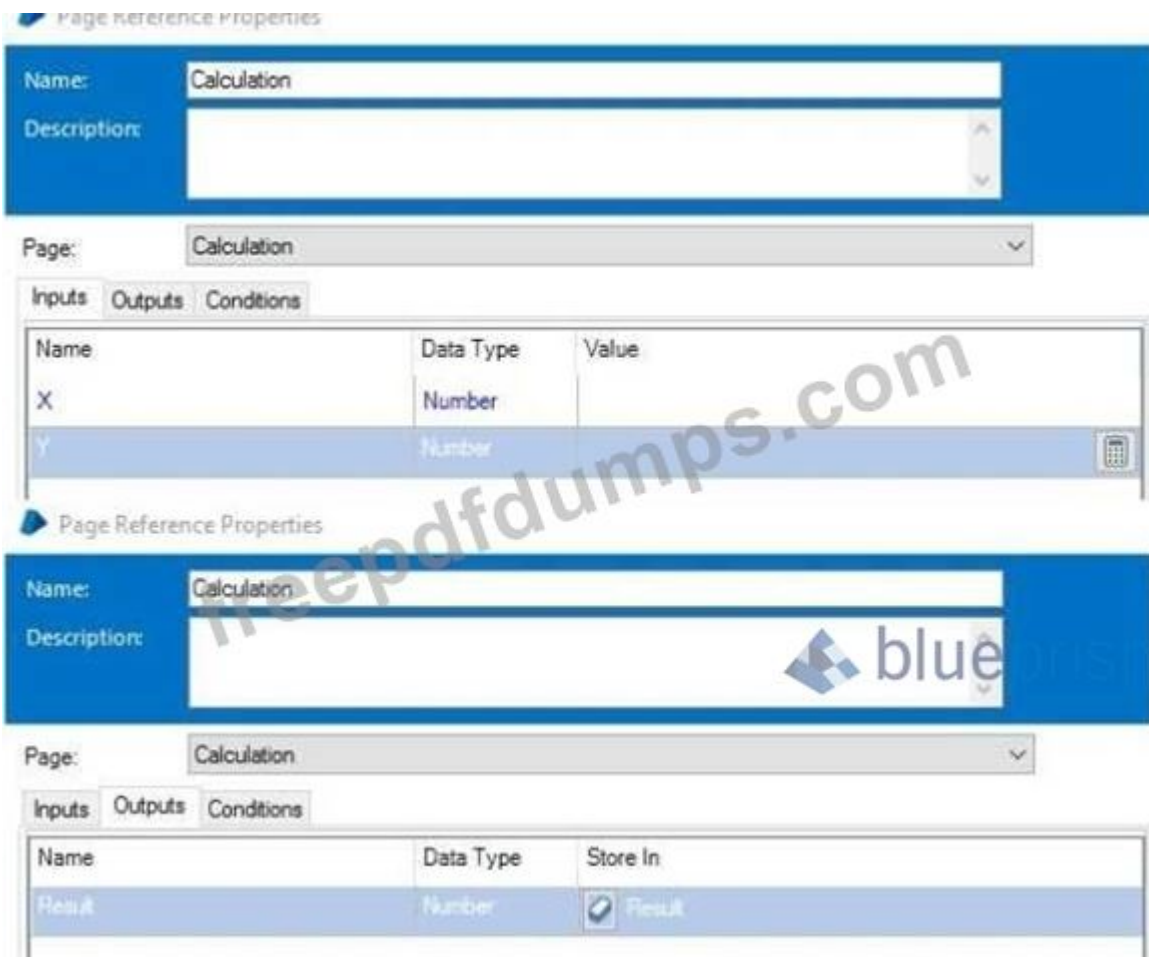
Answer: B ([LEAVE A REPLY](#))

NEW QUESTION: 37

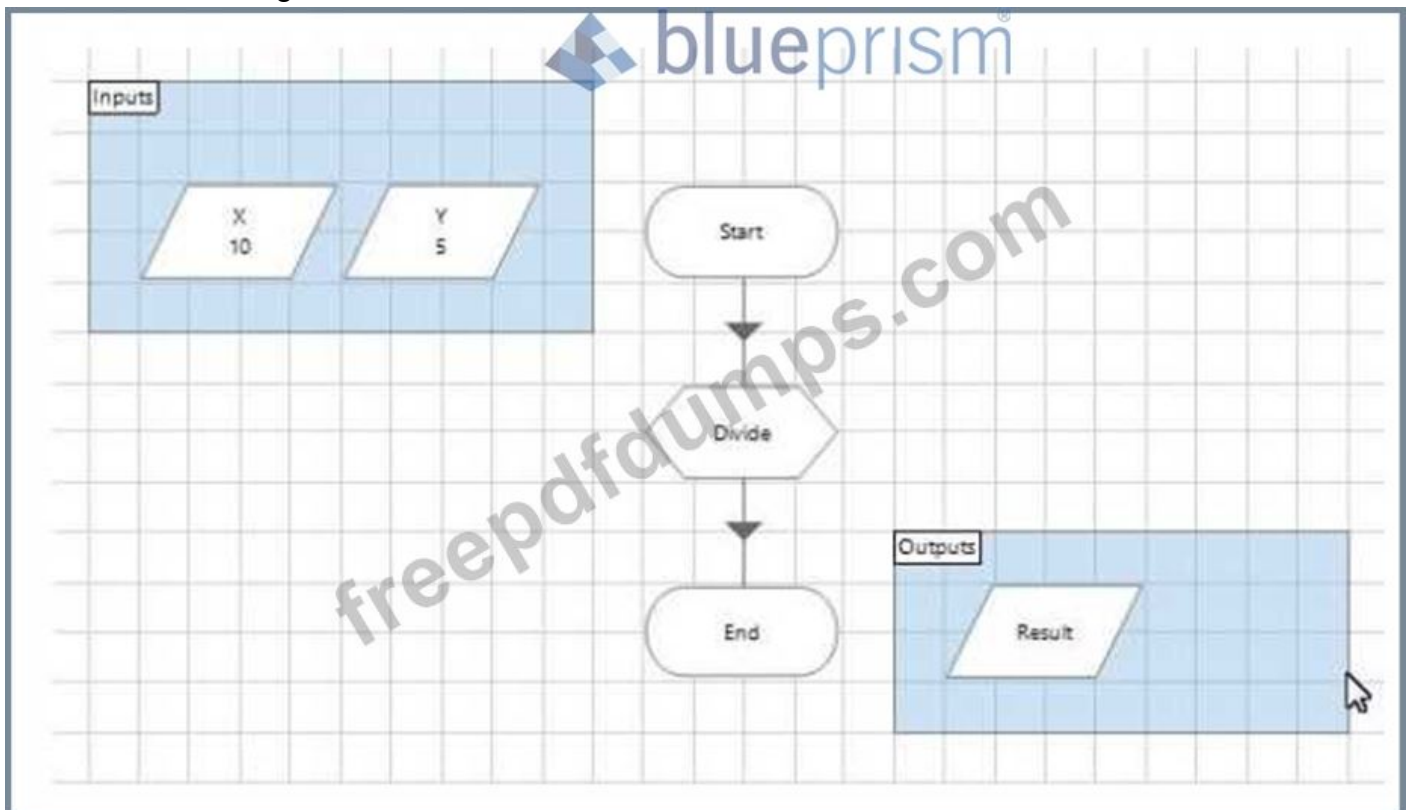
Study the following process flow:



The Calculation Page stage is configured as follows:



The Calculation Page is as follows:



The Data Items are configured as follow:

- * X is a Number data item with an initial value of 10
- * Y is a Number data item with an initial value of 5

* Result is a Number data item with no initial value

The Start Stage is configured pass through the X and Y values as input parameters.

The divide calculation stage expression is $[X] / [Y]$

The end stage is configured to pass back the results value as an output parameter.

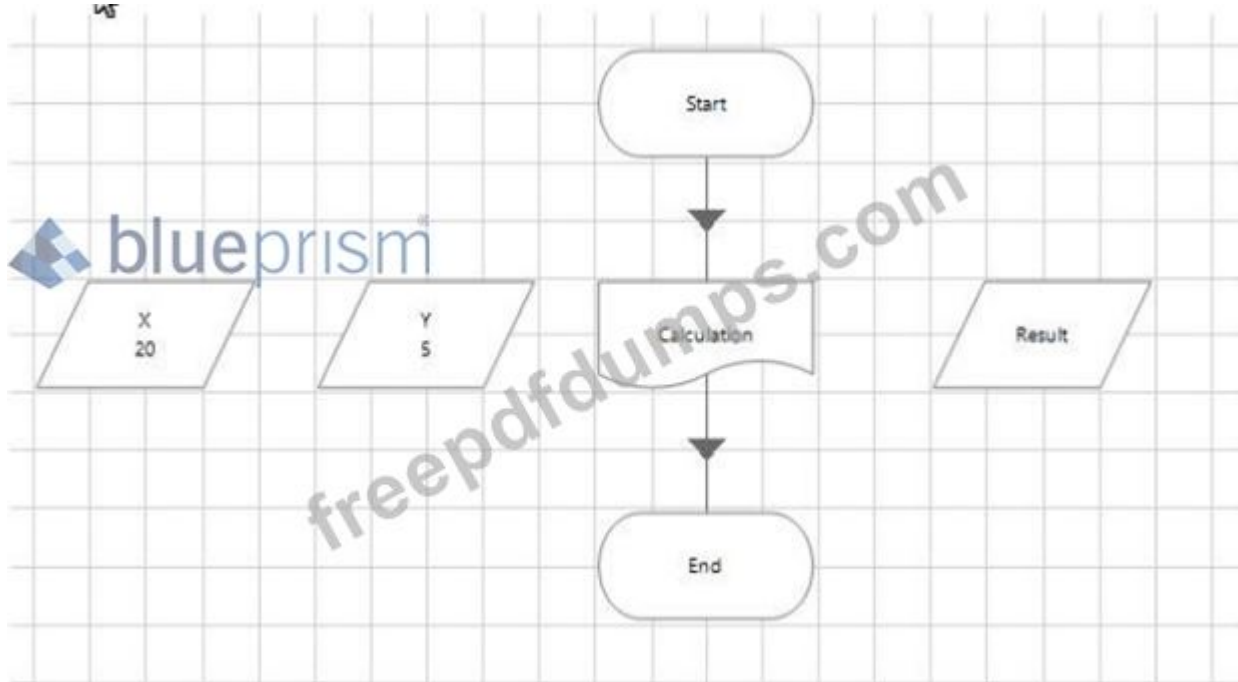
What will be contained in the Result Data Item on the Mam Page following the execution of the Process?

- A. 2
- B. 4
- C. 0
- D. No Value

Answer: A (LEAVE A REPLY)

NEW QUESTION: 38

Study the following process flow:



The Calculation Page stage is configured as follows:

Name: Calculation

Description:

Page: Calculation

Inputs Outputs Conditions

Name	Data Type	Value
X	Number	
Y	Number	

Page Reference Properties

Name: Calculation

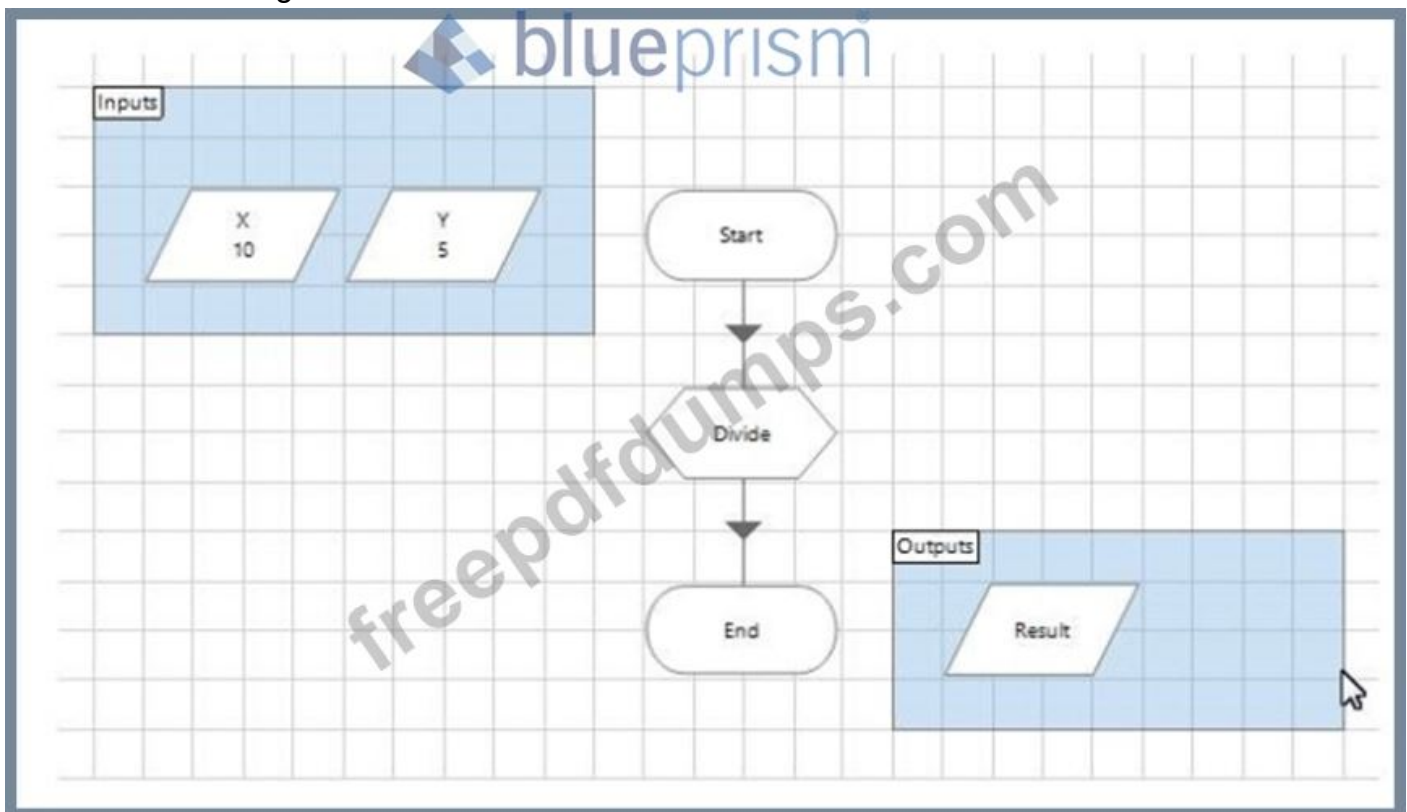
Description:

Page: Calculation

Inputs Outputs Conditions

Name	Data Type	Store In
Result	Number	<input checked="" type="checkbox"/> Result

The Calculation Page is as follows:



The Data Items are configured as follow:

- * X is a Number data item with an initial value of 10
- * Y is a Number data item with an initial value of 5
- * Result is a Number data item with no initial value

The Start Stage is configured pass through the X and Y values as input parameters.

The divide calculation stage expression is $[X] / [Y]$

The end stage is configured to pass back the results value as an output parameter.

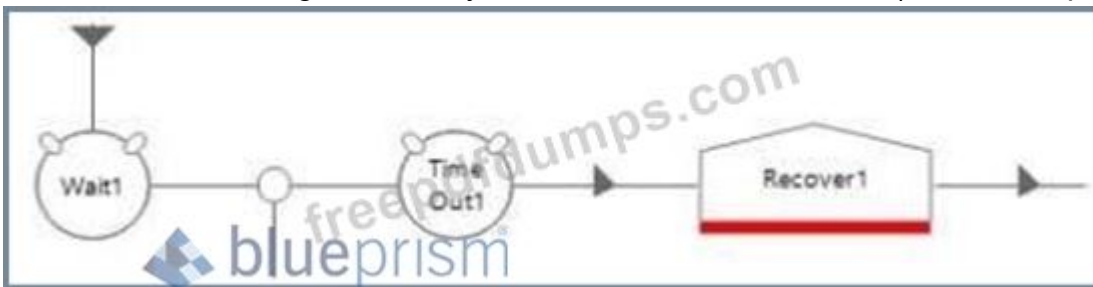
What will be contained in the Result Data Item on the Mam Page following the execution of the Process?

- A. 4
- B. 0
- C. No Value
- D. 2

Answer: A ([LEAVE A REPLY](#))

NEW QUESTION: 39

Which of the following flows can you not create in Blue Prism? (select 2 responses) A:



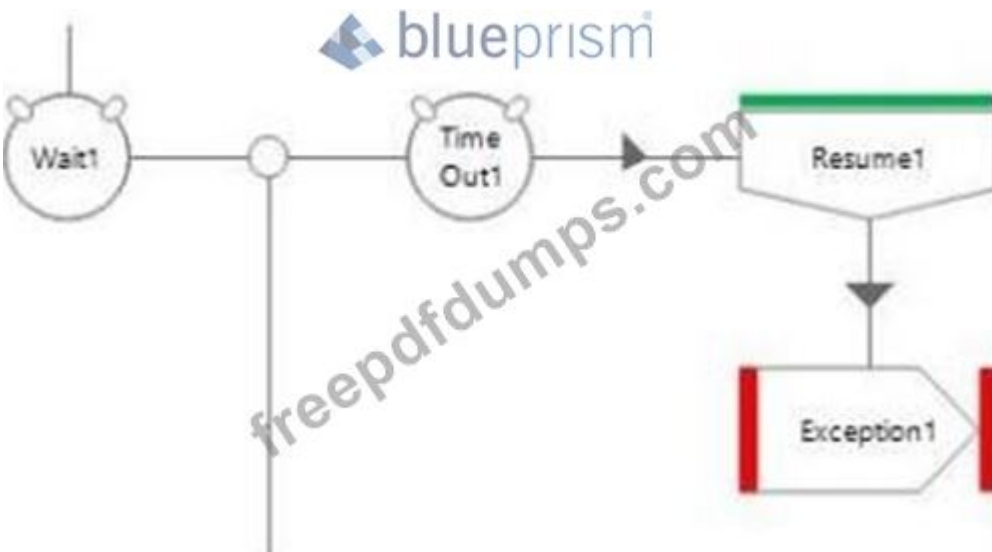
B:



C:



D:



- A. Option D
- B. Option C
- C. Option A

D. Option B

Answer: B,D ([LEAVE A REPLY](#))

NEW QUESTION: 40

What is the Blue Prism Application Navigator

A. It is part of the zoom tool in Process and Object Studio that allows you to instantly jump to different parts of the process map

B. It is Application Modeller functionality to create an application's entire element tree that when selected will highlight individual elements in the application.

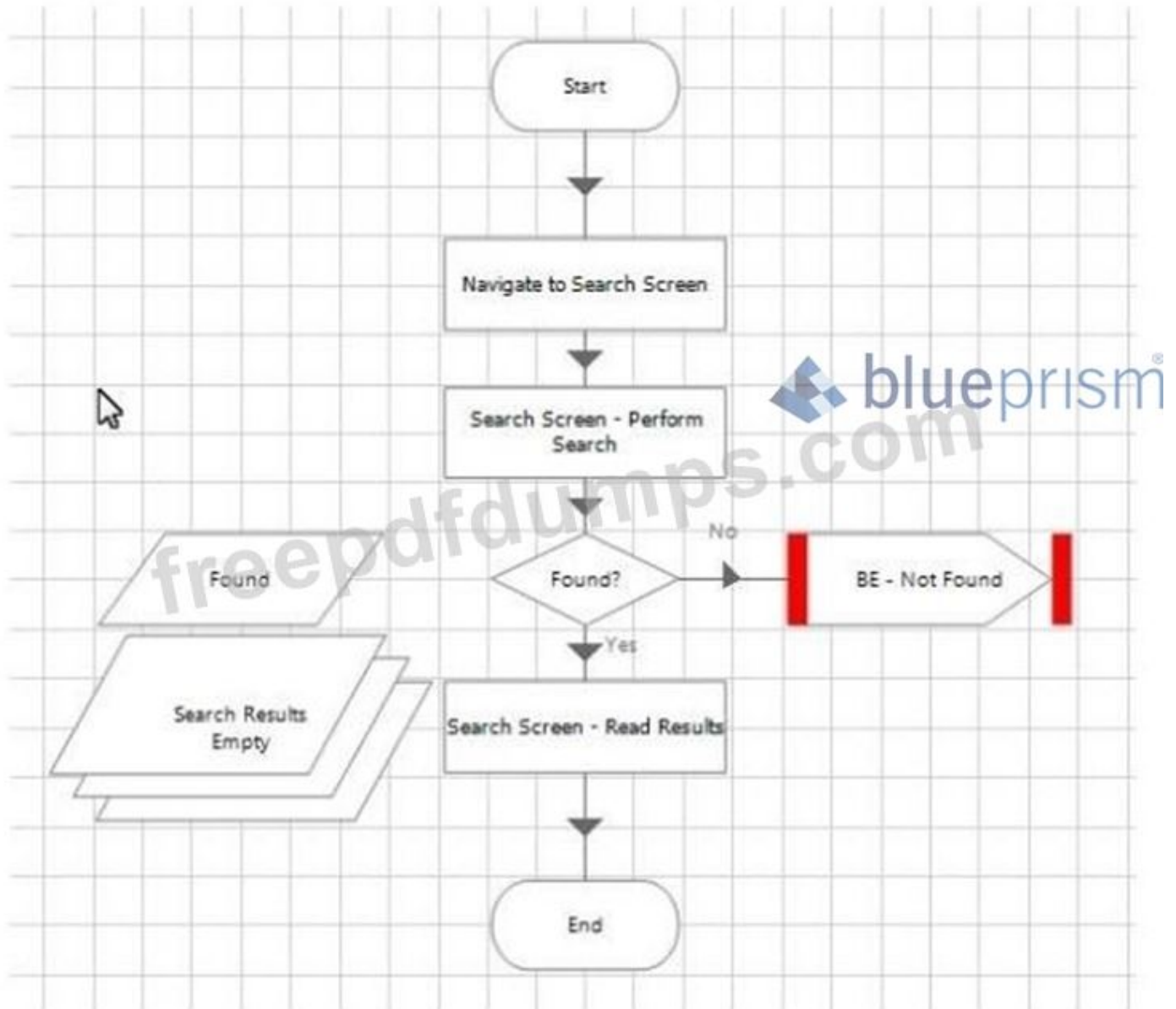
C. It is the spy tool that you drag around the application to identify attributes.

D. It is the Studio list side-bar of Process and Objects.

Answer: ([SHOW ANSWER](#))

NEW QUESTION: 41

Consider the following process flow from a sub-page of a process:



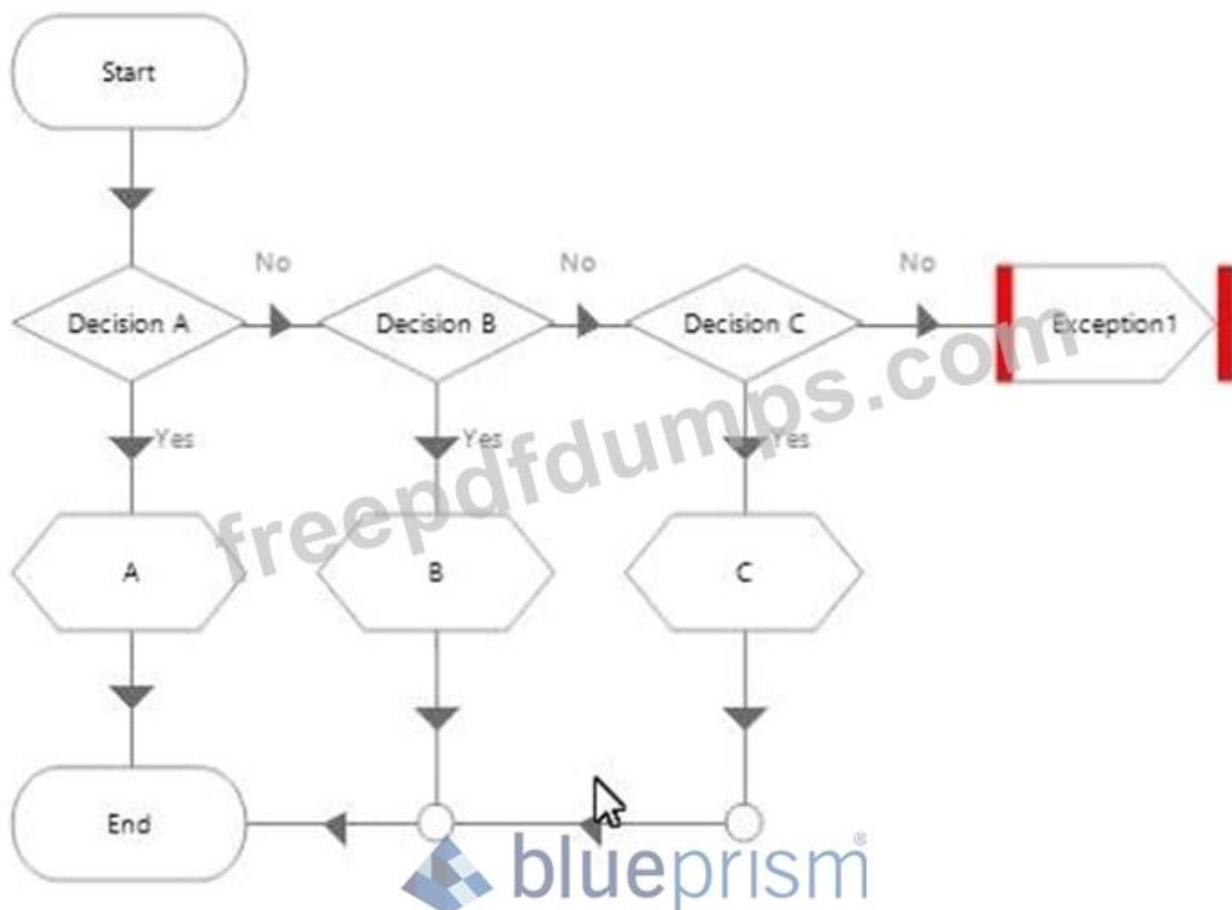
What is the problem with this sub-page flow?

- A. The sub-page process flow is missing any retry exception handling that should exist where a process calls object actions that interface with an application.
- B. There is nothing wrong with the sub-page flow shown in this image
- C. For better visibility of the process logic the flow steps shown in the image should be on the main page rather than in a sub-page of the process.
- D. The exception stage within the flow should be removed and replaced with an End stage that returns the found data item as an output parameter.

Answer: B ([LEAVE A REPLY](#))

NEW QUESTION: 42

Consider the following process flow:



Decision "A" properties are:

`Mid("United Kingdom", 8, 3) = "ing"`

Decision "B" properties are:

`Left("UK",1) AND Left("USA") = "U"`

Decision "C" properties are:

`Len("United States") < Len("United Kingdom")`

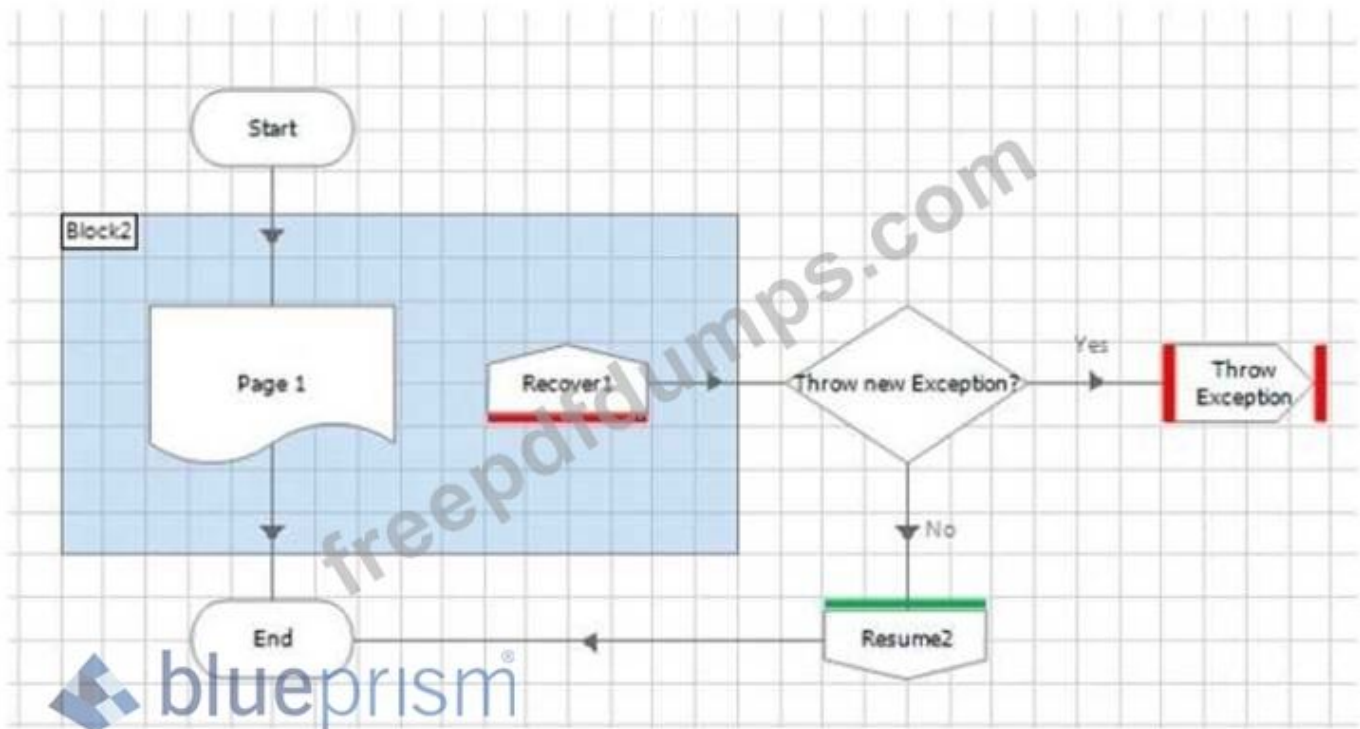
What will happen when the process runs?

- A. An exception will be thrown
- B. The flow will pass through calculation stage "C"
- C. The flow will pass through calculation stage "B"
- D. The flow will pass through calculation stage "A"

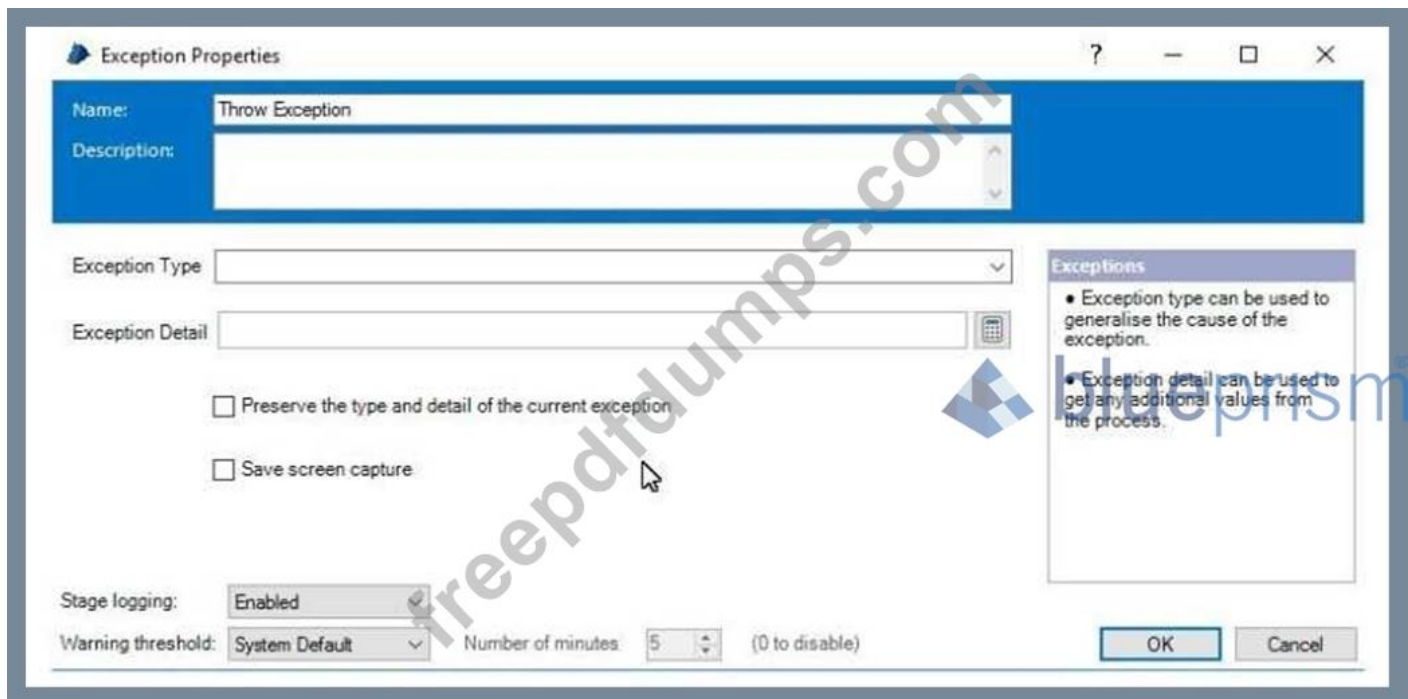
Answer: A ([LEAVE A REPLY](#))

NEW QUESTION: 43

Examine the flow below:



An error has been encountered on Page 1 and the exception has bubbled up to be recovered in the Recoverd stage The Yes' path has been taken from the "Throw new Exception?" decision stage. Consider the Throw Exception stage properties below:



How should the properties be configured for the Process to throw a new Business exception, i.e. a different exception to the one encountered in Page?

- A. Tick the Preserve the type and detail of the current exception checkbox. Leave the Exception Type and Exception Detail fields blank
- B. Type Business Exception in the Exception Type field and type a custom message in the Exception Detail field.
- C. Configure ExceptionType() in the Exception Type field and ExceptionDetail() in the Exception Detail field. Leave the Preserve the type and detail of the current exception checkbox un-ticked.
- D. Leave the Exception Type field blank and type "Business Exception" in the Exception Detail field.

Answer: ([SHOW ANSWER](#))

NEW QUESTION: 44

Which of the following statements regarding the use of Worker Queues are correct? (select 2 responses)

- A. Work Queue item Status can only be set to Completed or Exception
- B. Control Room allows filtering of the displayed queue items using exact tags and by using wildcards
- C. Wildcards are not allowed in the Tag Fitter property of the Work Queues business object Get Next Item action
- D. Tags can be used allow flexibility in the order items are worked within a single Work Queue

Answer: B,C ([LEAVE A REPLY](#))

NEW QUESTION: 45

How many End Stages can a sub-page in a Process have?

- A. 0

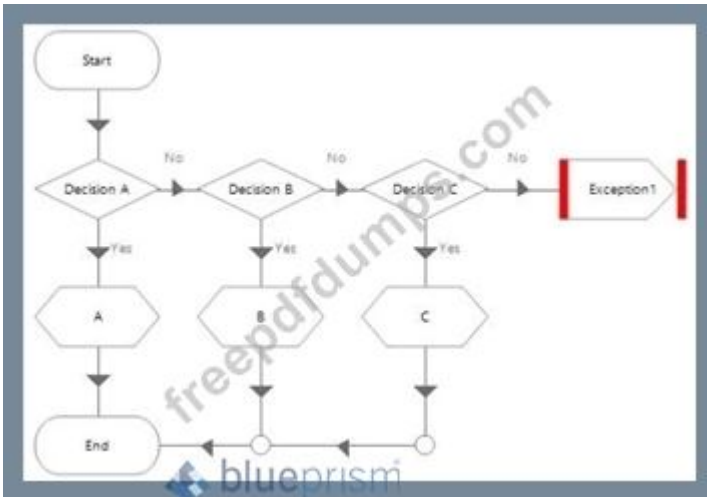
- B. 1
- C. 2
- D. Any Number

Answer: ([SHOW ANSWER](#))

Explanation/Reference:

NEW QUESTION: 46

Consider the following process flow:



Decision "A" properties are:

$$40 + 10 * 30 = 150$$

Decision "B" properties are:

$$\text{Sqrt}(100 - 19) = 9$$

Decision "C" properties are:

$$3 \wedge 4 = 27$$

What will happen when the process runs?

- A. The flow will pass through calculation stage "A"
- B. The flow will pass through calculation stage "C"
- C. An exception will be thrown
- D. The flow will pass through calculation stage "B"

Answer: D ([LEAVE A REPLY](#))

questions have been updated and answers have been corrected get the newest

Actual4test.com AD01 dumps with Test Engine here:

https://www.actual4test.com/AD01_examcollection.html (189 Q&As Dumps, **30%OFF Special**

Discount: Freepdfdumps)

NEW QUESTION: 47

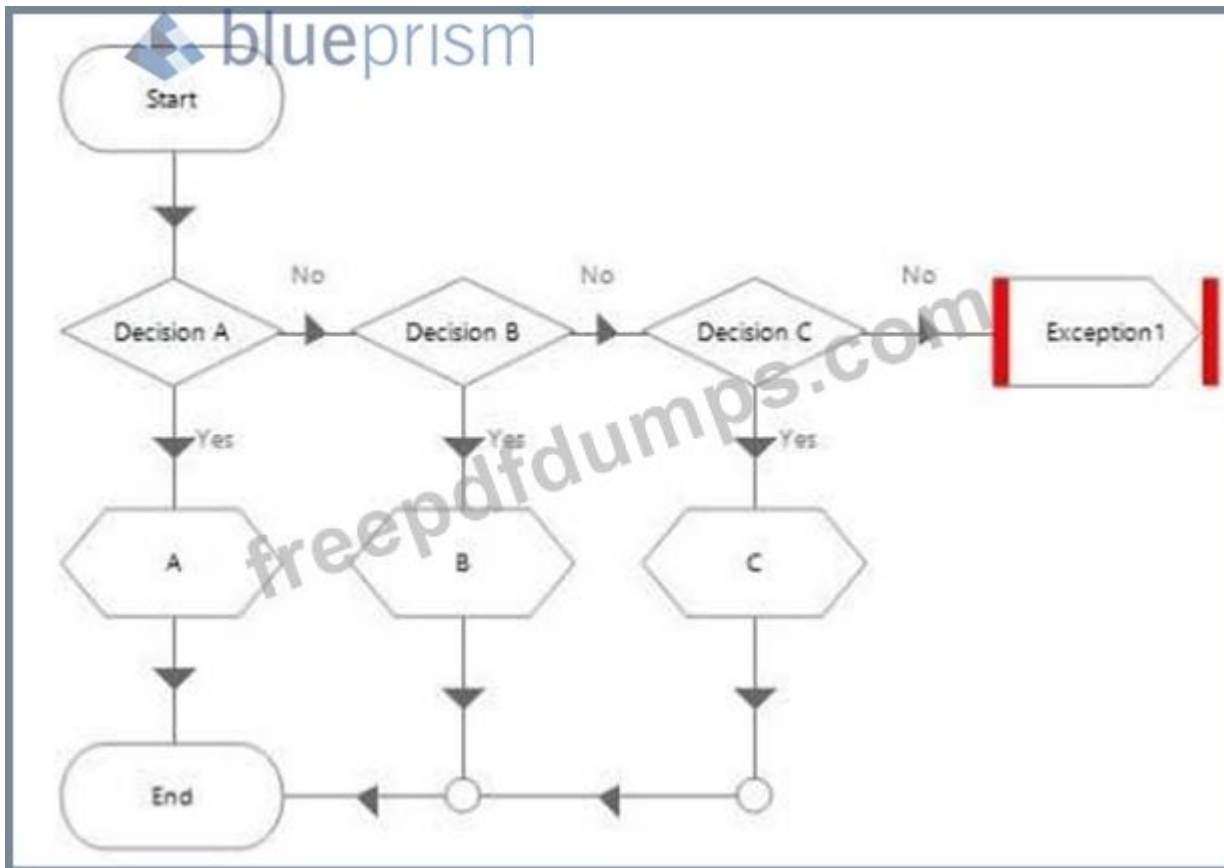
According to Blue Prism best practice which of the following information would be appropriate to store in a Work Queue tag? (select 3 responses)

- A.** Details of an exception that has occurred. For example: The Login Screen was not found.
- B.** Something that identifies the source of work. Example of tags might include: Email, Web Form, Excel Adhoc. Database
- C.** Something that identifies the type of work that was performed Example tags might be: Funds Transferred, SIM Card Requested, Account, Closed, Account Suspended, Account Noted
- D.** Something that identifies the type of process scenario. Example of tags might include: Invalid Product, Unrecognised customer, Goneaway Marker, Invalid Status
- E.** Something that identifies the client record to make work queue items easier to search. Example tags might be a phone number, customer reference number or ID, customer full name. For example:
+4407994446767, 00023231 A; Mr John A Smith
- F.** Something that identifies exact datetime of a step in the process. Example of tags might include Account Closed 20/03/2017 12:12:16, Work Completed 20/03/2017 12:12:16: Request Loaded 20/03/2017 12:12:16

Answer: B,C,D (LEAVE A REPLY)

NEW QUESTION: 48

Consider the following process flow:



Decision "A" properties are:

$$40 + 10 * 30 = 150$$

Decision "B" properties are:

$$\text{Sqrt}(100 - 19) = 9$$

Decision "C" properties are:

$$3 ^ 4 = 27$$

What will happen when the process runs?

- A. The flow will pass through calculation stage "B"
- B. The flow will pass through calculation stage "A"
- C. The flow will pass through calculation stage "C"
- D. An exception will be thrown

Answer: B (LEAVE A REPLY)

NEW QUESTION: 49

A Blue Prism solution interfaces with an internet application called HappyWeb. There is a test website available for development, and a training site available for user acceptance testing, and there is the production site available for processing live cases in HappyWeb.

Which of the following is true?

- A. Three different versions of object that launches the HappyWeb website will need to be created and maintained, one for each environment.

B. All development and testing MUST be done using the production site. This is because the test and training websites might not mirror production exactly.

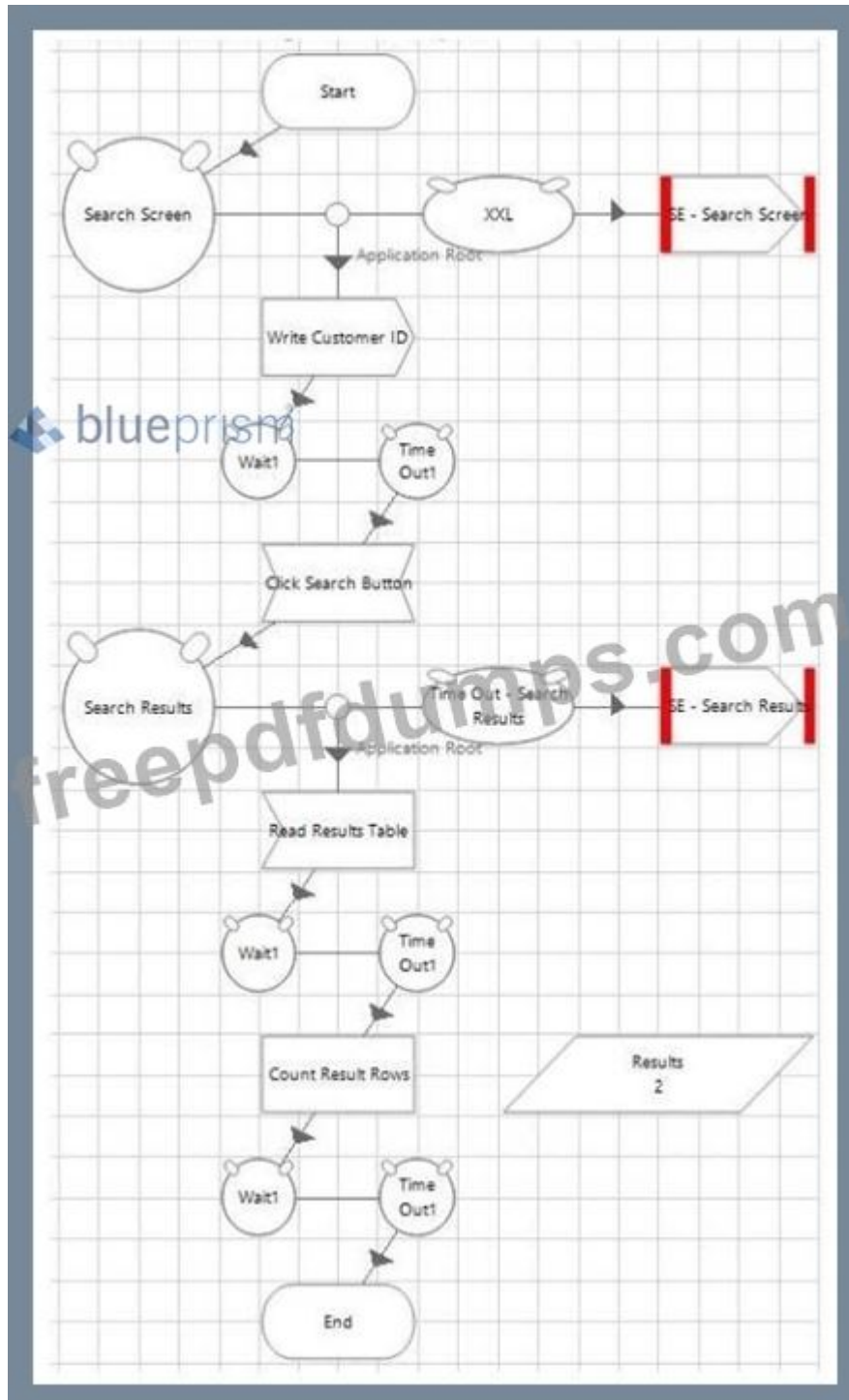
C. An Environment variable should be used to store the HappyWeb URL.

D. A local text file should be used to easily configure the details of the HappyWeb website to be used in each Blue Prism environment.

Answer: C ([LEAVE A REPLY](#))

NEW QUESTION: 50

Consider the following flow in an object:



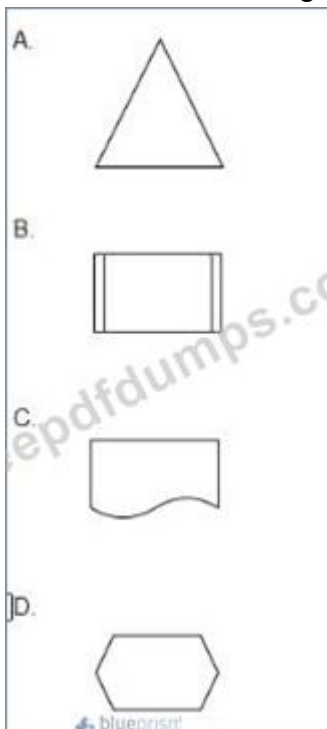
Which of these statements is true?

- A. The wait stages after read and write stages should be removed they are not required and are slowing the flow down
- B. The wait stages after read stages should be removed, the wait stages after write stages should be left because the application will have been changed
- C. Only the first wait stage in this flow is required, all the other wait stages should be removed.
- D. The flow shown in the diagram is correct, the wait stages are all adding a high level of robustness to the action

Answer: ([SHOW ANSWER](#))

NEW QUESTION: 51

Which of the following Stages can be found Process Studio but NOT Object studio?



- A. Option B
- B. Option A
- C. Option D
- D. Option C

Answer: ([SHOW ANSWER](#))

NEW QUESTION: 52

What is the Blue Prism Application Navigator

- A. It is part of the zoom tool in Process and Object Studio that allows you to instantly jump to different parts of the process map
- B. It is Application Modeller functionality to create an application's entire element tree that when selected will highlight individual elements in the application.
- C. It is the Studio list side-bar of Process and Objects.
- D. It is the spy tool that you drag around the application to identify attributes.

Answer: B ([LEAVE A REPLY](#))

NEW QUESTION: 53

A Blue Prism solution interfaces with an internet application called HappyWeb. There is a test website available for development, and a training site available for user acceptance testing, and there is the production site available for processing live cases in HappyWeb.

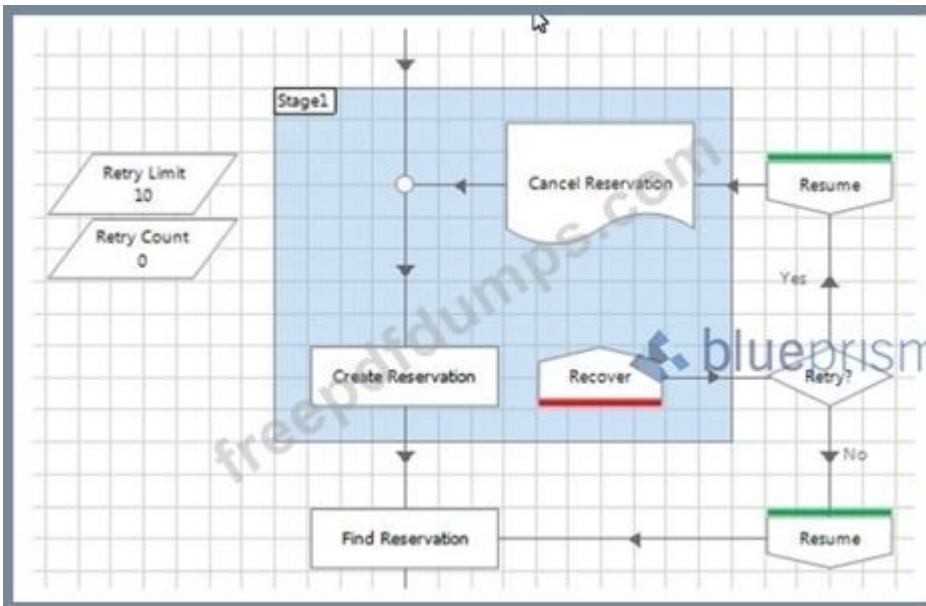
Which of the following is true?

- A. An Environment variable should be used to store the HappyWeb URL.
- B. A local text file should be used to easily configure the details of the HappyWeb website to be used in each Blue Prism environment.
- C. All development and testing MUST be done using the production site. This is because the test and training websites might not mirror production exactly.
- D. Three different versions of object that launches the HappyWeb website will need to be created and maintained, one for each environment.

Answer: ([SHOW ANSWER](#))

NEW QUESTION: 54

Study the following image showing part of the flow within a process:



What problems do you see with the process flow? (select 2 responses)

- A. There is a missing Resume stage on one of the routes through the flow.
- B. If an exception is thrown in the Cancel Reservation page and is allowed to bubble up to be caught by the Recover stage, the Create Reservation action won't be retried.
- C. The Retry Count is not being incremented for each retry.
- D. There is a missing Recover stage on one of the routes through the flow.

Answer: D ([LEAVE A REPLY](#))

NEW QUESTION: 55

You identify an element in Application Modeller and it highlights uniquely and can be used in your object flow diagram. The next day you find that Blue Prism cannot no longer identify the same

element, your object flow is giving you 'Element not found' exceptions. Which of the following statements is true?

A. The Blue Prism product support team should be contacted to report the issue. This signifies an inconsistency in how the Blue Prism product is working which needs to be fixed.

B. This must be an environment issue. The Blue Prism environment must be consistent and persistent, and an element that worked one day and does not work the next day suggests the environment is changeable.

The IT team supporting the environment needs to be contacted to fix the problem.

C. This suggests that Best Practice exception handling has not been implemented in the object. A retry loop around the object stages that are using the element will probably fix the problem

D. It is common for consistency issues to be found during configuration/development testing. The most likely cause is that an attribute has been selected for the element that is changeable, such as a window title with a date, or a URL. The developer needs to ensure that any changeable attributes are unticked.

Reason: This is happening when identifying the elements in application modeler some of the details which are changing on the different environment and while identifying the elements in application modeler the developer takes the element whose values are changing and when the application runs on the different path at that point of the time the process is able to expect values eg same url, date or title but it is not at there so the process terminates. Follow the best practice for this.

Answer: D (LEAVE A REPLY)

NEW QUESTION: 56

What is wrong with the flow shown in the image?

A. The resume stage must also be within the exception block

B. The retry loop logic does not include any navigation after the resume stage to ensure the application is ready to try the 'Search Screen -Perform Search' action again.

C. The retry loop logic shown in the image is incorrect because it uses multiple action stages. There should be a retry loop around every action.

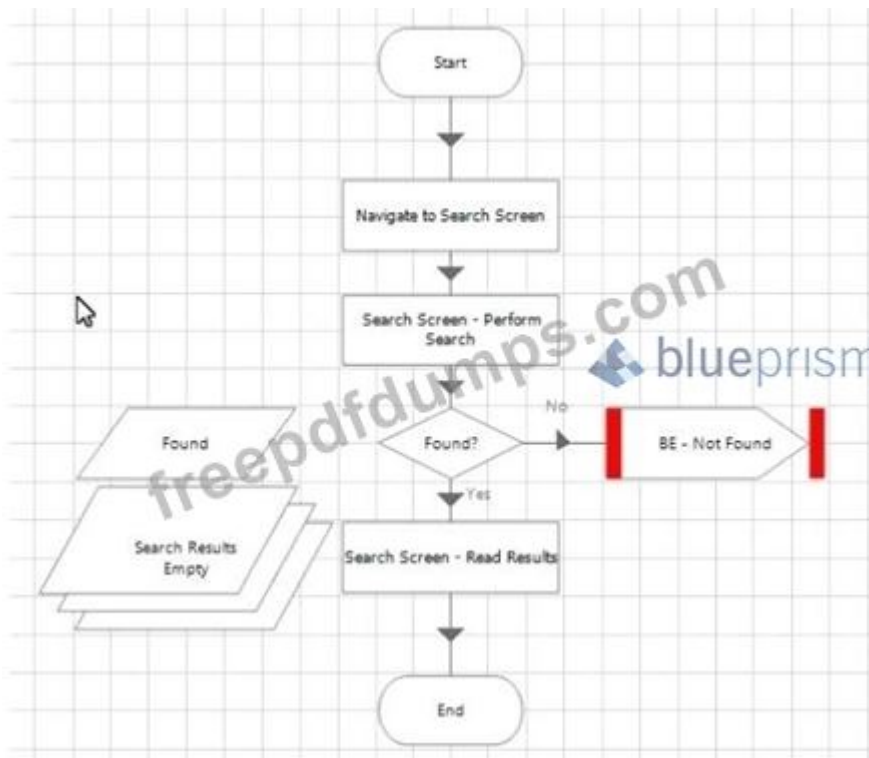
As per the process template the resume there should be another action or page after the resume stage.

D. Sub-pages should not have retry logic, exception handling should be in the object level rather than in the process.

Answer: B (LEAVE A REPLY)

NEW QUESTION: 57

Consider the following process flow from a sub-page of a process:



What is the problem with this sub-page flow?

- A. For better visibility of the process logic the flow steps shown in the image should be on the main page rather than in a sub-page of the process.
- B. There is nothing wrong with the sub-page flow shown in this image
- C. The sub-page process flow is missing any retry exception handling that should exist where a process calls object actions that interface with an application.
- D. The exception stage within the flow should be removed and replaced with an End stage that returns the found data item as an output parameter.

Answer: B (LEAVE A REPLY)

NEW QUESTION: 58

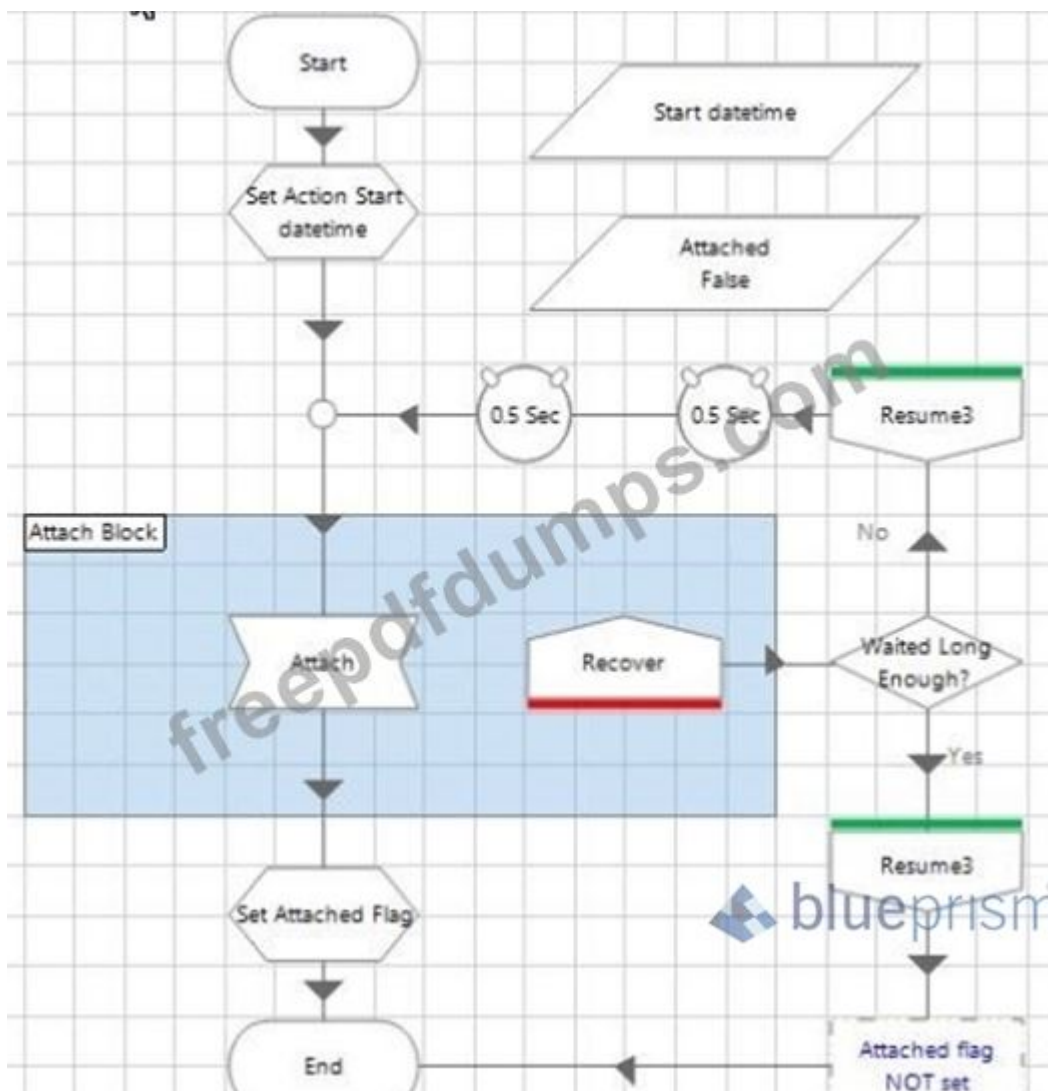
What is the Blue Prism Application Navigator?

- A. It is the spy tool that you drag around the application to identify attributes.
- B. It is the Studio list side-bar of Process and Objects.
- C. It is Application Modeller functionality to create an application's entire element tree that when selected will highlight individual elements in the application.
- D. It is part of the zoom tool in Process and Object Studio that allows you to instantly jump to different parts of the process map.

Answer: D (LEAVE A REPLY)

NEW QUESTION: 59

Consider the following process flow:



What is the problem with this flow?

- A. The 0.5 second wait stage should be removed so that the retries can be performed at full speed.
- B. The exception handling in this flow can be removed because an Attach action in a navigate stage should always work if configured correctly
- C. There is nothing wrong with this flow.
- D. The flow contains a recover stage and a route from it without a resume stage. This will cause internal errors on future exceptions thrown in the same session.
- E. The Attach Block should be enlarged to also include the Waited Long Enough decision stage.

Answer: A ([LEAVE A REPLY](#))

NEW QUESTION: 60

Which of the following statements regarding the use of Worker Queues are correct? (select 2 responses)

- A. Tags can be used allow flexibility in the order items are worked within a single Work Queue
- B. Wildcards are not allowed in the Tag Fitter property of the Work Queues business object Get Next Item action

C. Control Room allows filtering of the displayed queue items using exact tags and by using wildcards

D. Work Queue item Status can only be set to Completed or Exception

Answer: C,D (LEAVE A REPLY)

NEW QUESTION: 61

An action called Get Account details' fails with the following exception detail:

Internal : Failed to perform step 1 in Read Stage 'Read Details' on page 'Get Account Details' - Not Connected

Which of the following could cause this exception?

A. An internal error always indicates a problem with the Blue Prism product. The Blue Prism support team should be contacted for assistance

B. The Read Details action is not connected to another stage so cannot execute.

C. The Business Object has not been coupled to the application by either launching it or attaching to it.

D. The Read Details action in the Get Account Details Business Object no longer exists but the Process is attempting to use it.

Answer: C (LEAVE A REPLY)

Reason: This is happening when the application is not attached or launched and user tries to read the action. Exercise also mentioned in the foundation course. Below snapshot is from the Exception pdf.

Internal Exception Message	Interpretation
Already connected to an application	The business object is already attached and cannot be launched or attached again.
Not Connected	The business object is unattached and must be attached before it can perform any other actions.

Valid AD01 Dumps shared by Actual4test.com for Helping Passing AD01 Exam!

Actual4test.com now offer the **newest AD01 exam dumps**, the Actual4test.com AD01 exam **questions have been updated** and **answers have been corrected** get the **newest**

Actual4test.com AD01 dumps with Test Engine here:

https://www.actual4test.com/AD01_examcollection.html (189 Q&As Dumps, **30%OFF Special**

Discount: Freepdfdumps)

NEW QUESTION: 62

What is the syntax for using a collection field in an expression?

- A. Like this MyCollection(MyField)
- B. Like this MyCollection[MyField]
- C. Like this [MyCollection[MyField]]
- D. Like this MyCollection.MyField
- E. Like this [MyCollection.MyField]

Answer: E (LEAVE A REPLY)

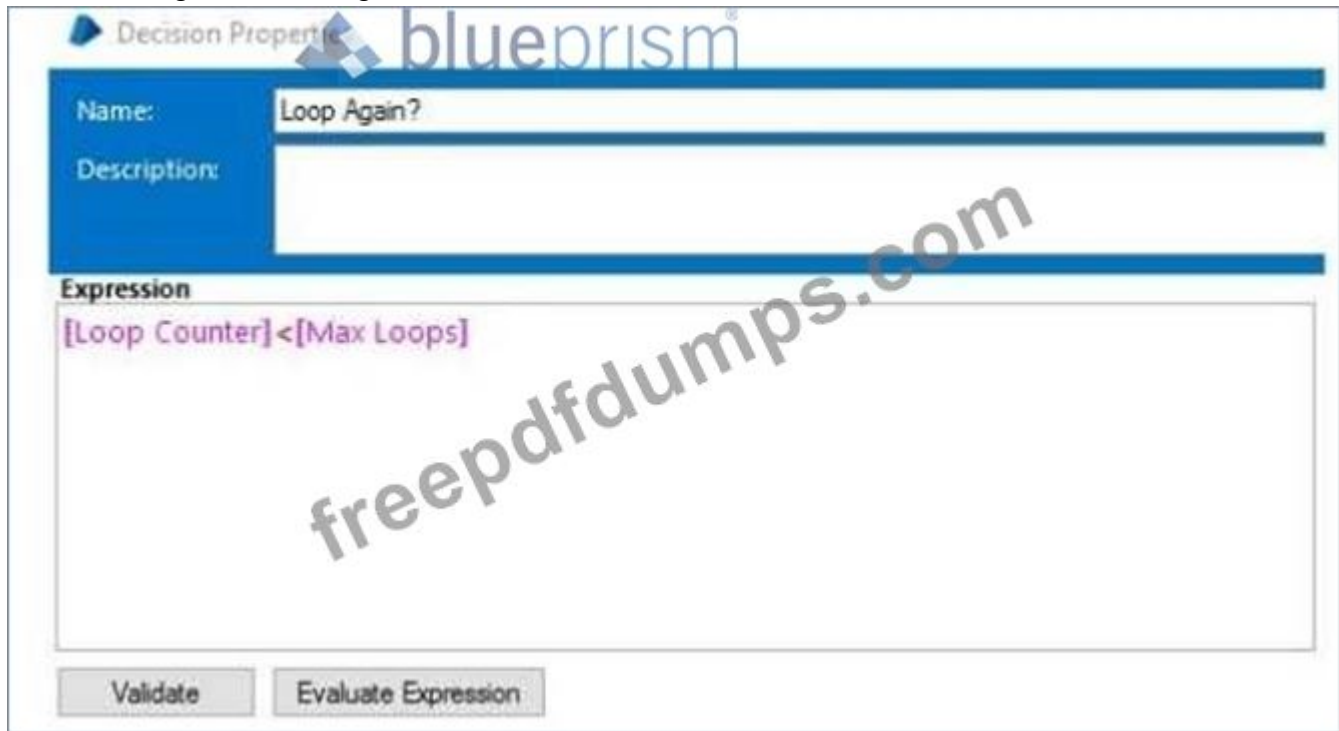
Reason: collection name or data type should always pass in square braces. And if you want to pass any column from the collection than use it as a dot notation after the collection name in the same braces. (You can check this in foundation course or by doing practically)

NEW QUESTION: 63

The data item "Loop Counter" is a number data item and has an initial value of 0.

The data item "Max Loops" is a number data item and has an initial value of 10.

The two stages are configured as follows:



How many times will the Loop Again stage be executed when the page is executed?

- A. 9

B. 10

C. 11

D. The loop will be infinite

Answer: B ([LEAVE A REPLY](#))

NEW QUESTION: 64

A process has been created but it is not listed in Control Room. The following reasons have been suggested.

1. The process uses objects with different run modes
- 2 The process has not been published
3. Process validation shows more than 99 errors
4. The user does not have privileges to run processes in Control Room?

Which of the above could cause the process not to be visible in Control Room?

A. 1 and 2

B. 1 and 4

C. 2 only

D. 2 and 3

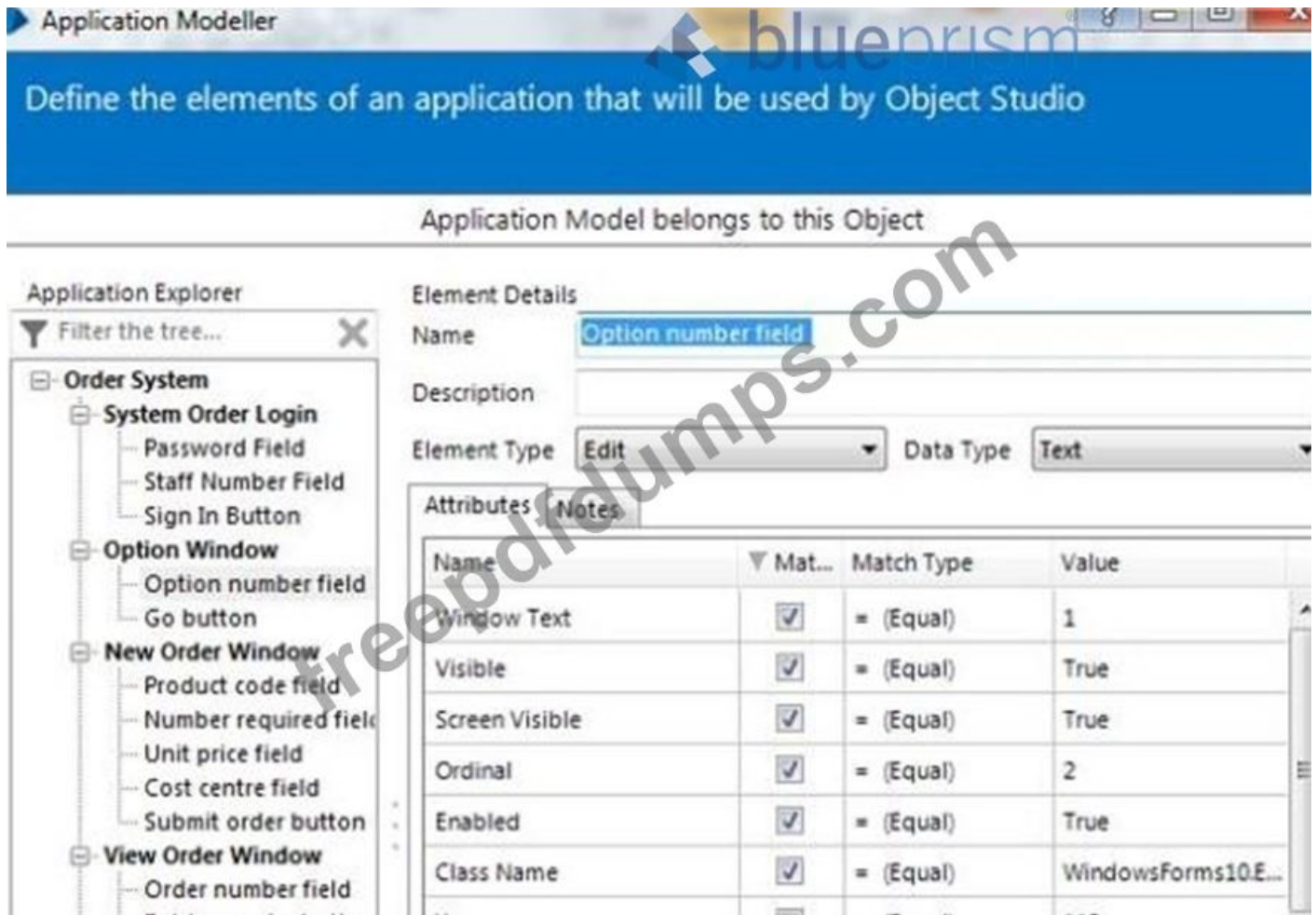
Answer: ([SHOW ANSWER](#))

NEW QUESTION: 65

When entering an option within the Training Order system the relevant option number is entered into the Option number field as below The Option number input field has been spied in Blue Prism:



The following attribute set has been returned by Application Modeller:



Which Attribute can be un-ticked to ensure consistent visibility of the element to Blue Prism?

- A. Window Text
- B. Visible
- C. Screen Visible
- D. Class Name

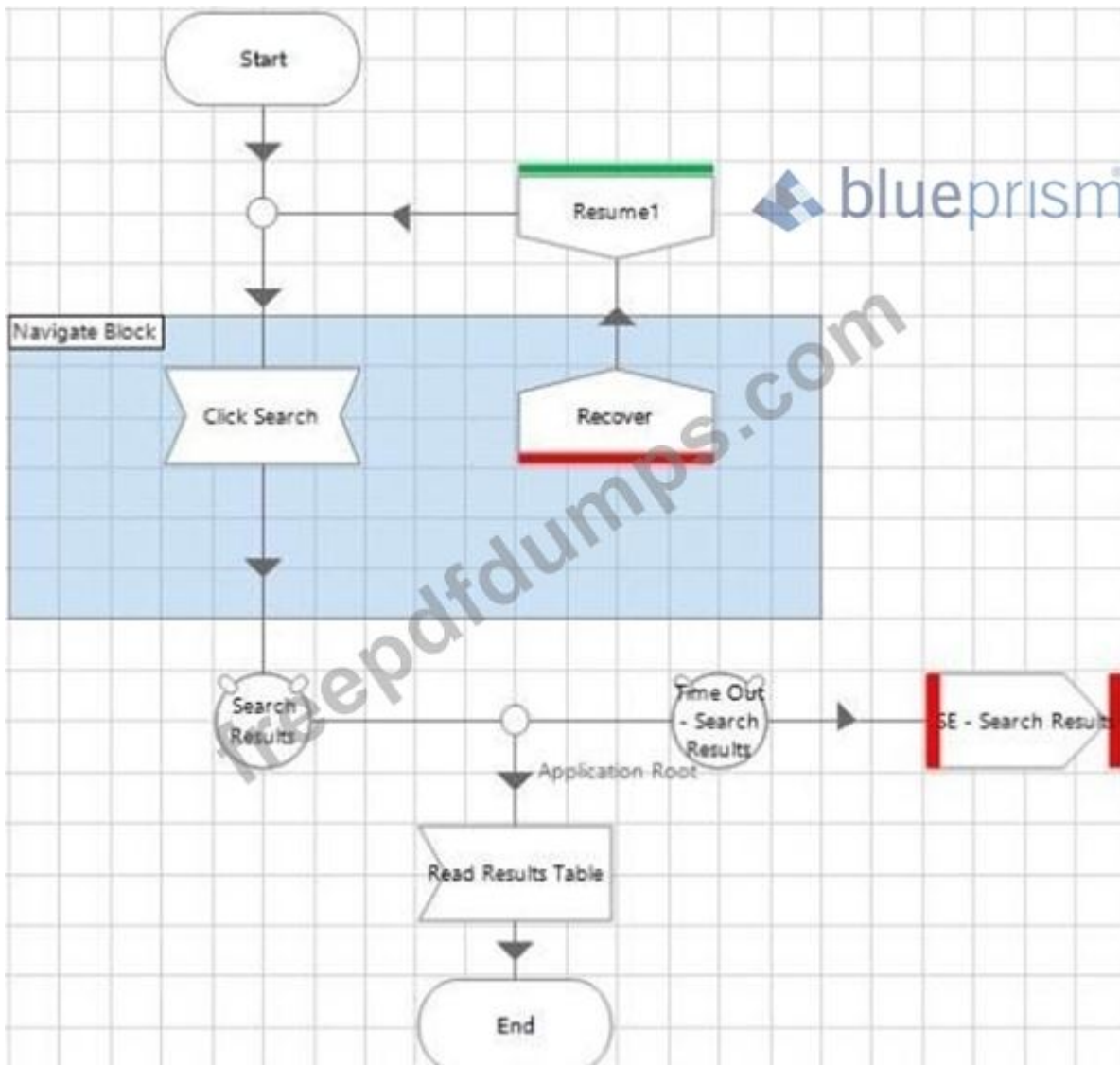
Answer: (SHOW ANSWER)

Explanation

Reason: As the window text is not unique when the value is changed and bp is able to spied at time a error would come. So there is no use of window text.

NEW QUESTION: 66

Consider the following diagram from an object studio action:



What is the problem with this flow?

- A. The Exception Block should be removed from the page so that all exceptions on that page can be recovered.
- B. There is nothing wrong with the object flow shown in this image.
- C. There is a risk of the flow causing an infinite loop
- D. There should be a wait stage at the end of the flow, before the end stage to ensure the flow logic has worked correctly

Answer: ([SHOW ANSWER](#))

NEW QUESTION: 67

The Saved Quantity Data Item is configured as a number with the initial value 0.
 The Loop Orders stage is configured to loop though the Orders collection.
 The Get Quantity stage is configured as follows:



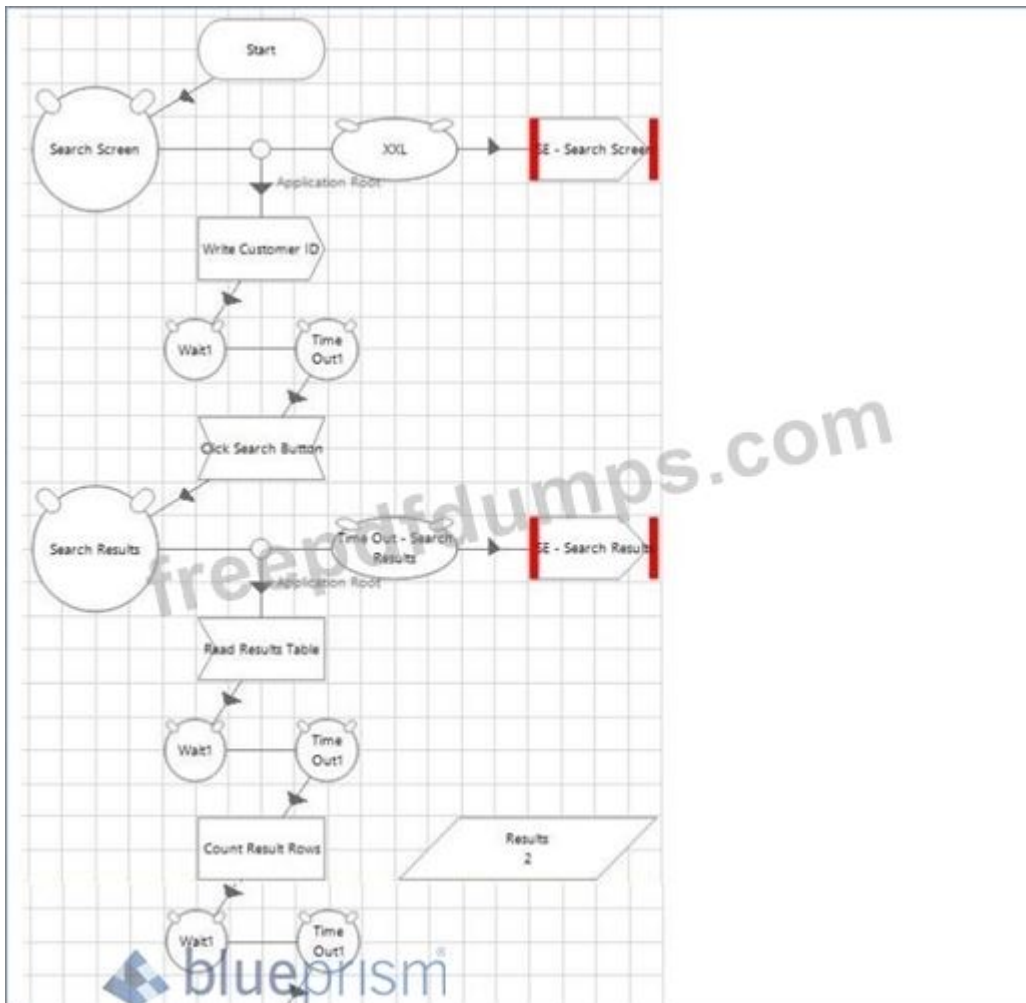
What will the data item Saved Quantity contain after the execution of the page?

- A. 4
- B. 19
- C. 5
- D. 10

Answer: ([SHOW ANSWER](#))

NEW QUESTION: 68

Consider the following flow in an object:



Which of these statements is true?

- A. The flow shown in the diagram is correct, the wait stages are all adding a high level of robustness to the action
- B. The wait stages after read and write stages should be removed they are not required and are slowing the flow down
- C. The wait stages after read stages should be removed, the wait stages after write stages should be left because the application will have been changed
- D. Only the first wait stage in this flow is required, all the other wait stages should be removed.

Answer: (SHOW ANSWER)

Explanation

Reason: There is no wait stage required after Read and write stage as it makes the process lengthy here, because here no activity is performed which are taking time to read and write so wait is not useful.

Here wait is required for search fields as there the activity is happening in which it is required for wait.

NEW QUESTION: 69

Which of the following can you perform in Control Room? (select all that apply)

- A. Rename a Work Queue
- B. Create a Work Queue

C. Encrypt a Work Queue

D. Refresh a Work Queue

Answer: D ([LEAVE A REPLY](#))

Valid AD01 Dumps shared by Actual4test.com for Helping Passing AD01 Exam!

Actual4test.com now offer the **newest AD01 exam dumps**, the Actual4test.com AD01 exam **questions have been updated** and **answers have been corrected** get the **newest**

Actual4test.com AD01 dumps with Test Engine here:

https://www.actual4test.com/AD01_examcollection.html (**189** Q&As Dumps, **30%OFF** Special

Discount: **Freepdfdumps**)