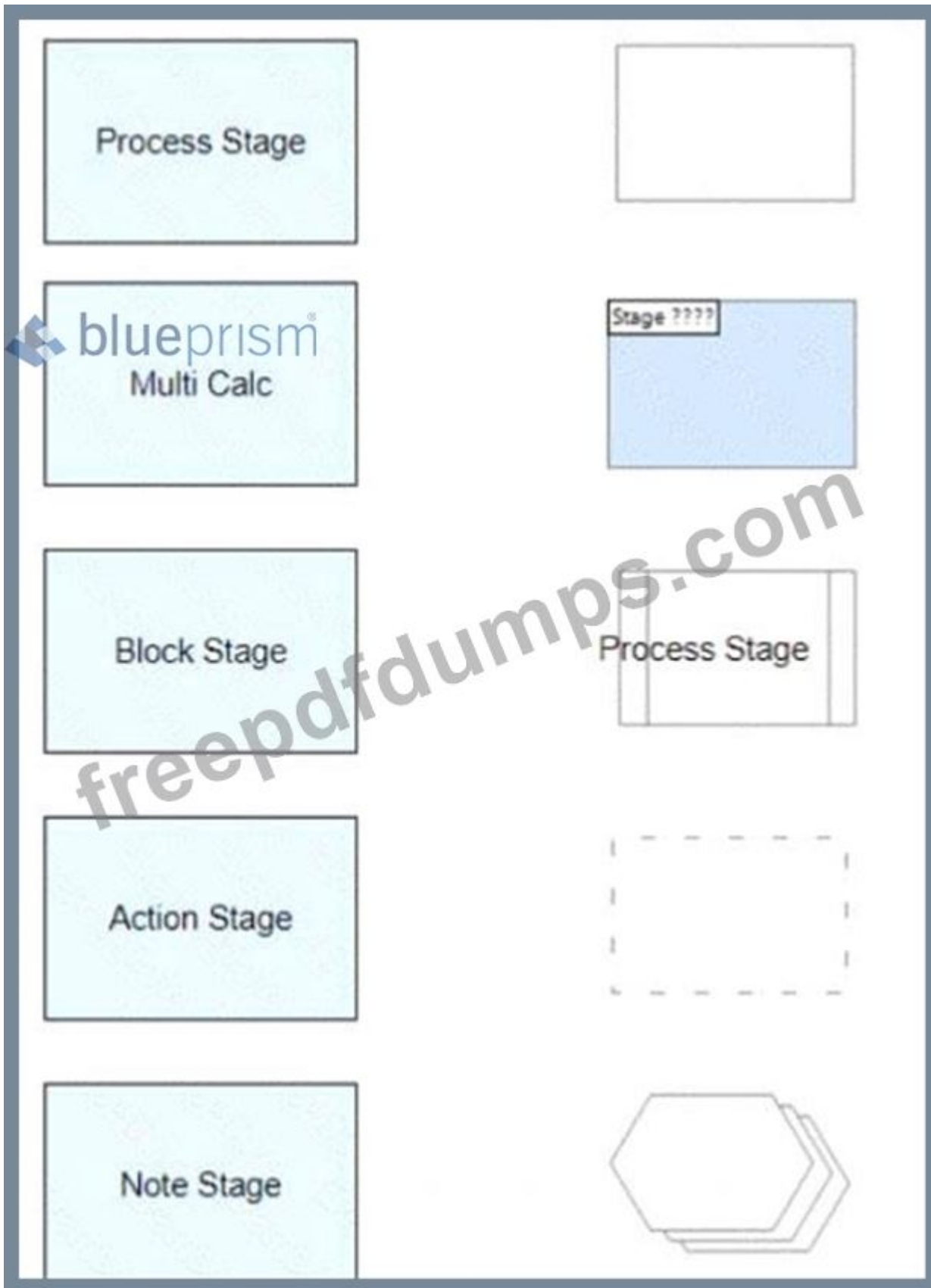


BluePrism.ASDEV01.v2023-10-19.q21

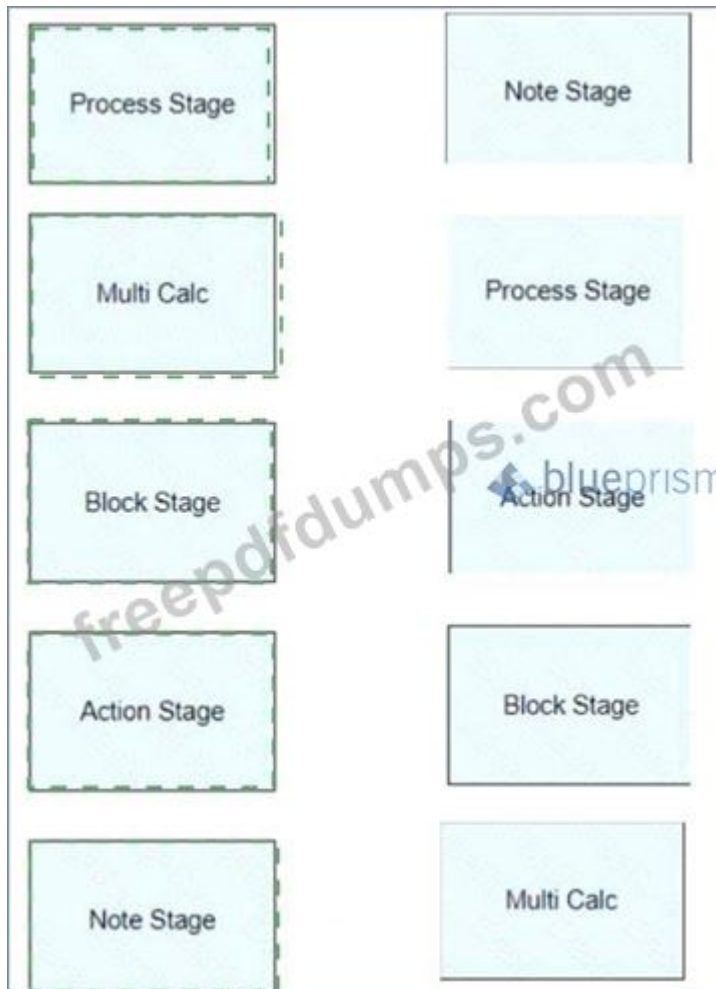
Exam Code:	ASDEV01
Exam Name:	Blue Prism Certified Associate Developer Exam
Certification Provider:	Blue Prism
Free Question Number:	21
Version:	v2023-10-19
# of views:	451
# of Questions views:	210
https://www.freepdfdumps.com/BluePrism.ASDEV01.v2023-10-19.q21.html	

NEW QUESTION: 1

Drag and drop the Blue Prism stage names on the left into the placement boxes (A - E) so that the dropped stage names correspond with the image of the Blue Prism stage beside it:



Answer:



Explanation

A. Note Stage B. Process Stage C. Action Stage D. Block Stage E. Multi Calc The note stage has an icon of a yellow sticky note, the process stage has an icon of a blue circle with a white arrow, the action stage has an icon of a blue circle with a white lightning bolt, the block stage has an icon of a blue rectangle with a white X, and the multi calc stage has an icon of a blue circle with a white calculator¹.

References: 1 <https://bpdocs.blueprism.com/bp-6-8/en-us/stage-types.htm>

NEW QUESTION: 2

When can a Deferral Date be added to a Work Queue item?

(Select all items which apply)

- A. When the item is an Exception
- B. When the item is added to the Work Queue
- C. When the item has been processed
- D. When the Item is locked by the Process
- E. When the item is pending

Answer: B,D (LEAVE A REPLY)

Explanation

These are the correct situations when a deferral date can be added to a work queue item. It allows the process to specify when an item should be processed based on business rules or

availability of resources. The other options are either incorrect or not supported by Blue Prism.

References:

<https://portal.blueprism.com/sites/default/files/2021-05/Blue%20Prism%20Certification%20-%20Associate%20D> (page 16)

NEW QUESTION: 3

A Blue Prism Process reads data about a customer from an online form which includes their date of birth. A Process must determine if the customer is under the age of 18 before processing the customer request. What type of Blue Prism stage would you use to test the customer's age?

- A. Calculation stage
- B. Business Rule stage
- C. Validation stage
- D. Decision stage

Answer: D ([LEAVE A REPLY](#))

Explanation

A decision stage is used to evaluate process rules or logic and branch the process flow based on the outcome of the evaluation. A decision stage can have multiple outcomes and can use expressions to compare values or check conditions¹. In this case, a decision stage can be used to compare the customer's date of birth with the current date and determine if they are under 18 or not. References:

<https://bpdocs.blueprism.com/bp-6-10/en-us/helpCalculationsAndDecisions.htm>

NEW QUESTION: 4

Which of the following Blue Prism Data Item data types would you use to store a True or False value?

- A. Binary
- B. Number
- C. Text
- D. Flag
- E. Password

Answer: D ([LEAVE A REPLY](#))

Explanation

This is the correct data type for storing a True or False value in Blue Prism. The other options are either invalid or used for different kinds of values. References:

<https://portal.blueprism.com/sites/default/files/2021-05/Blue%20Prism%20Certification%20-%20Associate%20D> (page 13)

NEW QUESTION: 5

What is the difference between a Collection and an Undefined Collection?

- A. A Collection is added to a Process flow diagram during development, whereas an Undefined Collection is added to the diagram dynamically when the Process runs

B. A Collection has the column name and data types assigned during development whereas with an Undefined Collection, column names and data types are automatically assigned when the Process runs

C. There is no difference between a Collection and an Undefined Collection

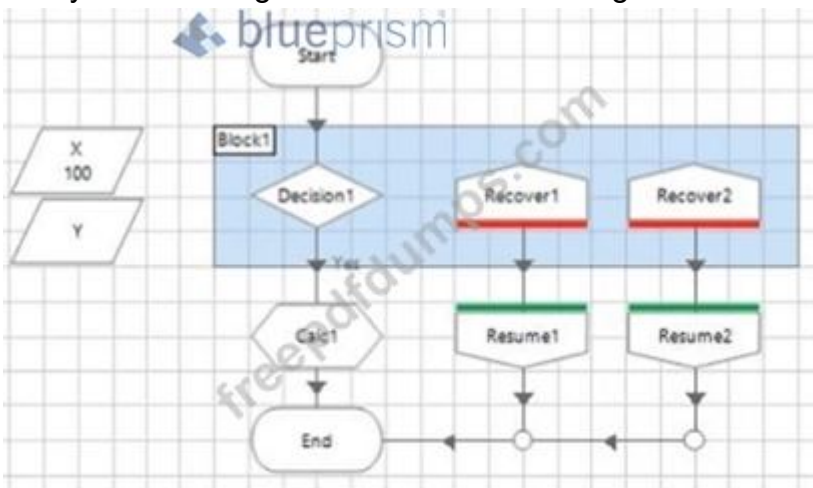
Answer: ([SHOW ANSWER](#))

Explanation

This is the correct difference between a Collection and an Undefined Collection. The other options are either incorrect or describe the same feature of both types of collections. References: <https://portal.blueprism.com/sites/default/files/2021-05/Blue%20Prism%20Certification%20-%20Associate%20D> (page 14)

NEW QUESTION: 6

Study the following Blue Prism Process diagram:



If the Decision1 stage contains an error in the Expression which causes an internal exception to be raised when the Process is run, which Recover stage will receive the Exception?

A. It is impossible to determine from the information available

B. Recover 1

C. Recover2

D. The Process will terminate as Blue Prism Block stages will not allow multiple Recover stages to be placed within a Block

Answer: ([SHOW ANSWER](#))

Explanation

This is the correct recover stage that will receive the exception because it is the closest recover stage to the decision stage that contains the error. The other options are either incorrect or irrelevant. References:

<https://portal.blueprism.com/sites/default/files/2021-05/Blue%20Prism%20Certification%20-%20Associate%20D> (page 15)

NEW QUESTION: 7

What is a Blue Prism Process?

A. A business flow diagram

- B. A computer application
- C. A business flow chart
- D. A graphical representation of a working computer program which automates manual repetitive tasks

Answer: (SHOW ANSWER)

Explanation

A Blue Prism process is a graphical representation of a working computer program that automates manual repetitive tasks using business objects and stages. A process can be run by an operator or scheduled by a control room². References: ² <https://www.koenig-solutions.com/blue-prism-associate-developer-course>

NEW QUESTION: 8

Which of the following items are valid Blue Prism Data Item data types?

- A. Flag
- B. Text
- C. Yes/No
- D. Date
- E. Number
- F. Dictionary
- G. Integer

Answer: A,B,D,E (LEAVE A REPLY)

NEW QUESTION: 9

What is a Blue Prism Collection?

- A. It is special type of stage in Blue Prism which collects data from various sources, which is then used in the Process
- B. It is a container for multiple Blue Prism stages
- C. It is a special type of Data Item which can hold multiple rows and columns of data similar to an Excel Worksheet or a table of data
- D. It is a feature which can group multiple Data Items together, simplifying your diagram

Answer: C (LEAVE A REPLY)

Explanation

This is the correct definition of a Blue Prism collection. The other options are either incorrect or describe different features of Blue Prism. References:

<https://portal.blueprism.com/sites/default/files/2021-05/Blue%20Prism%20Certification%20-%20Associate%20D> (page 14)

NEW QUESTION: 10

Which of the following items are valid Blue Prism Data Item data types?

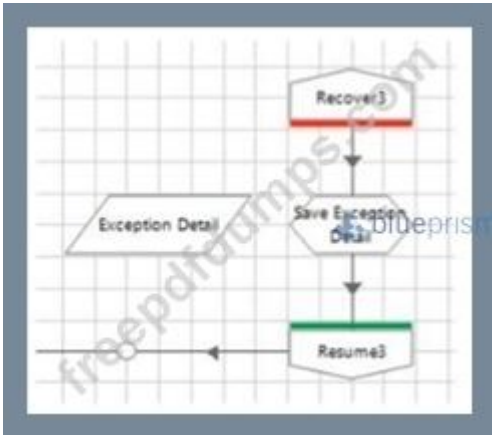
- A. Number
- B. Yes/No

- C. Flag
- D. Text
- E. Date
- F. Dictionary
- G. Integer

Answer: A,C,D,E (LEAVE A REPLY)

NEW QUESTION: 11

Examine the following recover flow taken from a Blue Prism Process:



The 'Exception Detail' data item has no initial value and has a data type of text The Calculation stage "Save Exception Detail" will output the current exception detail to the 'Exception Detail' data item What expression would you use in the 'Save Exception Detail' stage to achieve this?

Answer:

CurrentException.Detail

This is the correct expression to use in the calculation stage to output the current exception detail to the data item. It uses the built-in object CurrentException and its property Detail to get the value of the exception detail. References:

<https://portal.blueprism.com/sites/default/files/2021-05/Blue%20Prism%20Certification%20-%20Associate%20D> (page 15)

NEW QUESTION: 12

When a Work Queue item is currently being processed by a Digital Worker what happens to the queue item?

- A. The item GUID is updated to a new unique ID
- B. The Work Queue item icon is updated to purple flag
- C. The item is locked by the Process
- D. The Work Queue item icon is updated U green tick
- E. A copy of the Work Queue item is created ready to receive any updates from the Process

Answer: C (LEAVE A REPLY)

Explanation

This is the correct statement about what happens to a work queue item when it is being processed by a digital worker. It prevents other digital workers from accessing the same item and

ensures data integrity. The other options are either incorrect or describe different stages of work queue items. References:

<https://portal.blueprism.com/sites/default/files/2021-05/Blue%20Prism%20Certification%20-%20Associate%20D> (page 16)

NEW QUESTION: 13

When working with the orders area of the Centrix Data Solutions order system, there is a requirement to enter an order menu option in the field located above the Go button:



The screenshot shows a light blue background with the text "Please enter an option" at the top. Below this is a numbered list of four options: "1. New Order", "2. Retreive Order", "3. View All Orders", and "4. View Orders By Date". A white text input field is positioned below the list, containing the number "1". A "Go" button is located at the bottom of the form. A watermark "blueprism.com" is visible across the middle of the image.

The menu option field element in Application Modeller has been configured as follows:

The screenshot shows the 'Element Details' window for an 'Edit' element. The 'Name' is 'Textbox: Order Menu Option' and the 'Data Type' is 'Text'. The 'Attributes' tab is active, showing a table of attributes with checkboxes for matching.

Name	Mat...	Match Type	Value
Window Text	<input checked="" type="checkbox"/>	= (Equal)	1
Visible	<input checked="" type="checkbox"/>	= (Equal)	True
Screen Visible	<input checked="" type="checkbox"/>	= (Equal)	True
Enabled	<input checked="" type="checkbox"/>	= (Equal)	True
Class Name	<input checked="" type="checkbox"/>	= (Equal)	WindowsForms10.EDIT

Which Attribute should be un-ticked to ensure the menu option field element can be consistently recognised?

- A. Window Text
- B. Visible
- C. Class Name
- D. Enabled
- E. Screen Visible

Answer: A (LEAVE A REPLY)

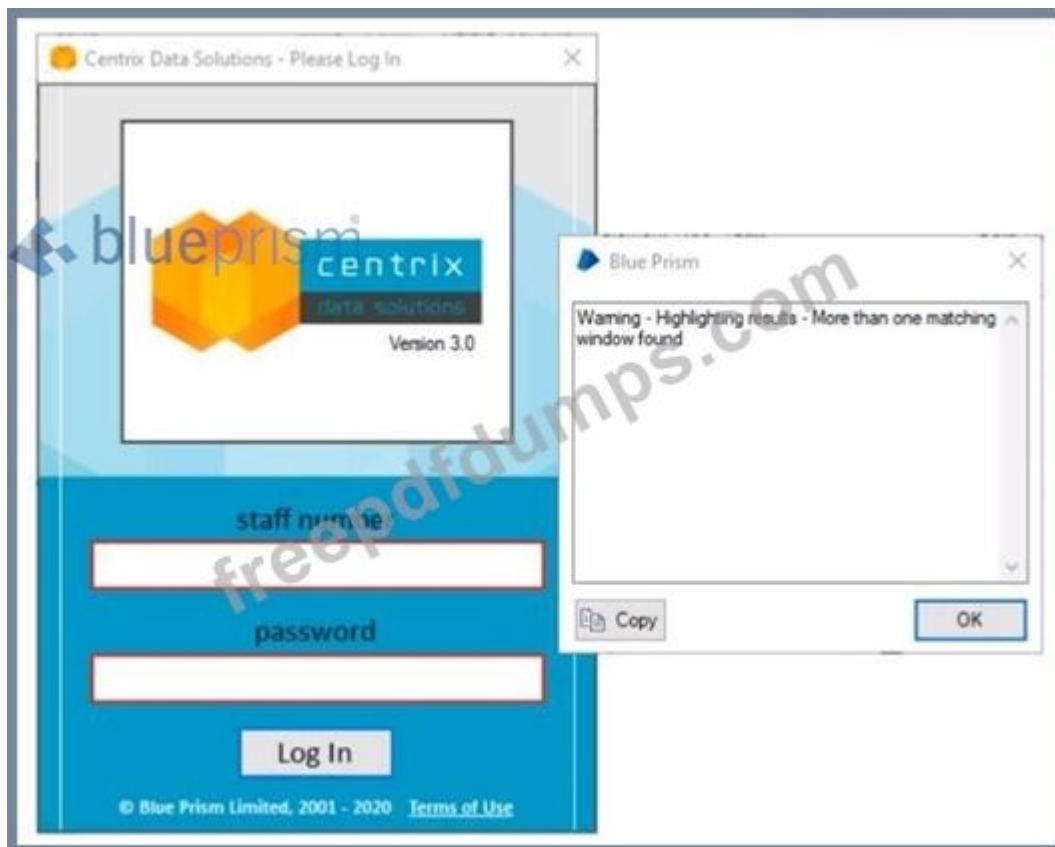
Explanation

The Window Text attribute should be un-ticked because it contains the text "Orders" which may not be unique or consistent across different windows in the application. The other attributes are more reliable and stable for identifying the menu option field element. References:

<https://portal.blueprism.com/sites/default/files/2021-05/Blue%20Prism%20Certification%20-%20Associate%20D> (page 12)

NEW QUESTION: 14

The password field in the Centrix Data Solutions business application can be spied successfully, however when using the Highlight feature in Application Modeller the following behaviour is encountered



Which of the following Attributes would you use to help obtain a unique element match?

- A. Child Count
- B. Parent Class Name
- C. Parent Ordinal
- D. Ordinal
- E. Class Name

Answer: C (LEAVE A REPLY)

Explanation

The parent ordinal attribute is the index of the parent element among its siblings in the application hierarchy. It can be used to help identify an element that has a dynamic or non-unique class name or ordinal by using its relative position to its parent element¹. In this case, the password field has a class name of "Edit" and an ordinal of 1, which are not unique among other elements in the application. However, its parent element has a class name of "Window" and an ordinal of 2, which can be used to distinguish it from other elements with the same class name and ordinal.

References: 1 <https://bpdocs.blueprism.com/bp-6-10/en-us/helpAttributes.htm>

NEW QUESTION: 15

Which area of Blue Prism is used to set up and edit Credential information?

- A. Control Room
- B. Process Studio
- C. Credential Store on the Digital Worker
- D. Object Studio
- E. The Security group in Blue Prism System area

Answer: (SHOW ANSWER)

Explanation

This is the correct area of Blue Prism where credential information can be set up and edited. It allows the user to create and manage credential records that can be accessed by processes and objects. The other options are either incorrect or not related to credential management.

References:

<https://bpdocs.blueprism.com/bp-6-10/en-us/helpDebug.htm?TocPath=Interface%7CStudio%7CProcess%20stud> (page 4)

NEW QUESTION: 16

A Blue Prism Decision stage needs to test the value of a column in the current row of a Collection. The Collection is named 'Account Data'. The Column is named 'Account Type'. What is the correct way to reference the required column value in the Collection row, from within the Decision stage?

- A. {Account Data Account Type}
- B. [Account Data Account Type]
- C. {Account Type}
- D. Collection="Account Data. Column=Account Type,"
- E. [Account Type]

Answer: B (LEAVE A REPLY)

Explanation

This is the correct way to reference the required column value in the collection row from within the decision stage. It uses square brackets to enclose the collection name and the column name. The other options are either incorrect or used for different purposes. References:

<https://portal.blueprism.com/sites/default/files/2021-05/Blue%20Prism%20Certification%20-%20Associate%20D> (page 14)

Valid ASDEV01 Dumps shared by Actual4test.com for Helping Passing ASDEV01 Exam!

Actual4test.com now offer the **newest ASDEV01 exam dumps**, the Actual4test.com ASDEV01 exam **questions have been updated** and **answers have been corrected** get the **newest** Actual4test.com ASDEV01 dumps with Test Engine here:

https://www.actual4test.com/ASDEV01_examcollection.html (51 Q&As Dumps, **30%OFF**

Special Discount: Freepdfdumps)

NEW QUESTION: 17

Unhandled Exceptions will travel up through the Process eventually to the Main Page which will cause the Process to terminate. What term is used to describe this behaviour?

- A. Exception Queuing
- B. Exception Deferral
- C. Exception Bubbling

D. Exception Resolution

Answer: C ([LEAVE A REPLY](#))

Explanation

This is the correct term used to describe the behavior of unhandled exceptions traveling up through the process until they reach the main page. The other options are either incorrect or describe different aspects of exception handling. References:

<https://portal.blueprism.com/sites/default/files/2021-05/Blue%20Prism%20Certification%20-%20Associate%20D> (page 15)

NEW QUESTION: 18

Which of the following items can be used in Blue Prism to transmit values between Process Pages?

(Select all items which apply)

- A. Input Parameters**
- B. Lookup Stages**
- C. Output Parameters**
- D. Calculation Stages**
- E. Data Items**

Answer: ([SHOW ANSWER](#))

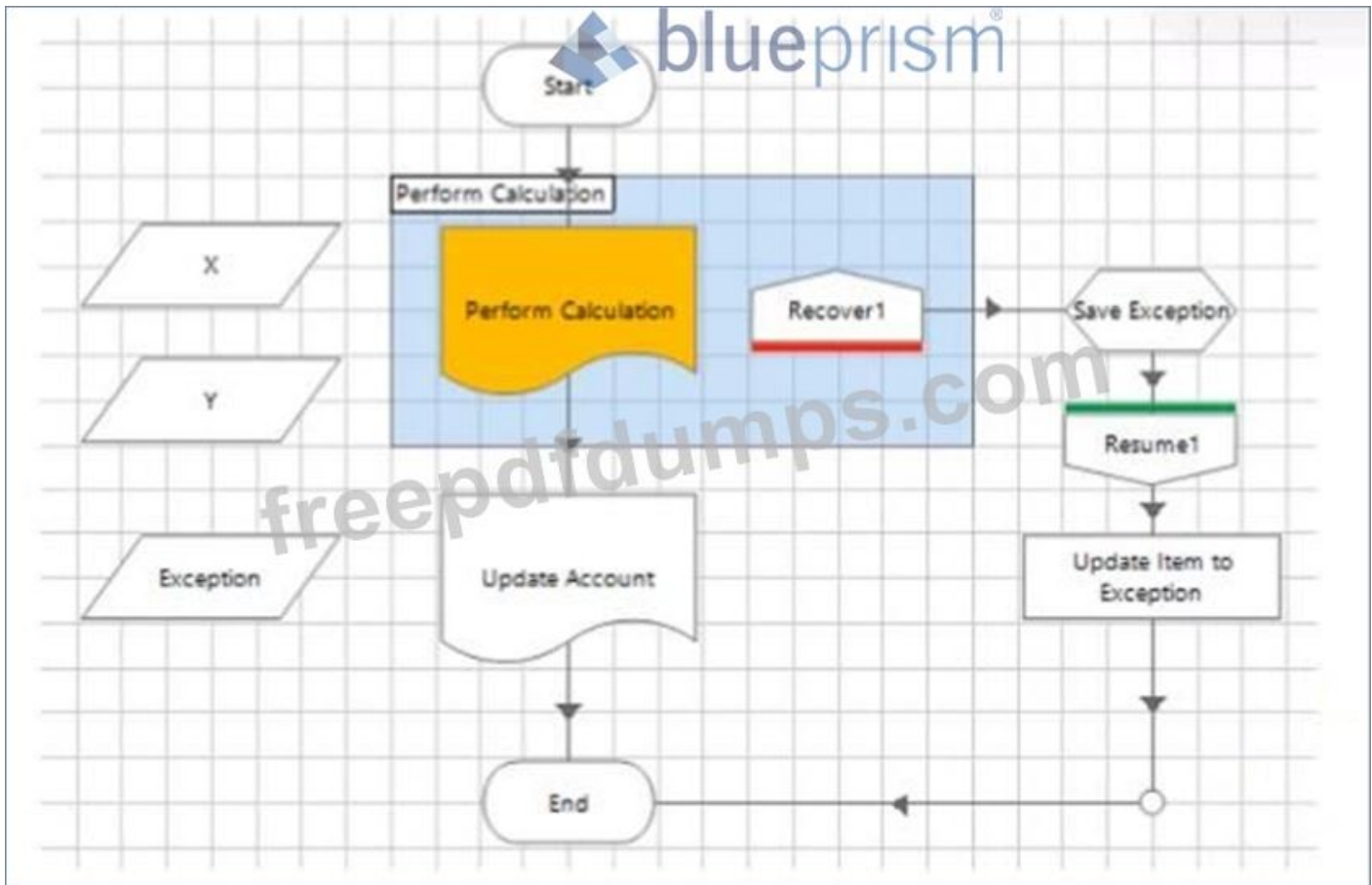
Explanation

Input parameters, output parameters and data items can be used to transmit values between process pages by passing or returning values from one page to another . Lookup stages and calculation stages are not used for this purpose, as they are used to retrieve values from collections or perform calculations on values3.

References: 2 <https://bpdocs.blueprism.com/bp-6-10/en-us/helpProcessPages.htm> 3
<https://bpdocs.blueprism.com/bp-6-10/en-us/helpCalculationsAndDecisions.htm>

NEW QUESTION: 19

Examine the following Blue Prism Process diagram which is from the Main Page of a Process:



The Process current stage is the 'Perform Calculation' stage.

The 'Perform Calculation' stage has Exception Handling to resolve all Exceptions within the same Page What would happen if you click on Step Over or press F10?

- A. All remaining stages in the Process would be executed, and focus would move the the End stage on the 'Main Page'
- B. All underlying logic on the 'Perform Calculation' Page will be processed and focus would move to the 'Update Account' stage
- C. All underlying logic on the 'Perform Calculation' Page will be processed as well as the remaining stages on the 'Main Page', before focus would move to the End stage
- D. Recover1 would receive the Exception, therefore, focus would move to the Recover1 stage

Answer: B (LEAVE A REPLY)

Explanation

This is the correct outcome of clicking on Step Over or pressing F10 when the current stage is a page stage. It will execute all the logic on that page and then move to the next stage on the main page. The other options are either incorrect or describe different scenarios. References: <https://portal.blueprism.com/sites/default/files/2021-05/Blue%20Prism%20Certification%20-%20Associate%20D> (page 11)

NEW QUESTION: 20

Which of the following items are valid Attribute Match Types in Blue Prism Application Modeller?

- A. = (Equal)
- B. %% (Like)
- C. Dynamic
- D. <> (Not Equal)
- E. '(Wildcard)
- F. != (Not Equal)
- G. ## (Decimal)

Answer: A,C,E ([LEAVE A REPLY](#))

Explanation

These are the valid attribute match types in Blue Prism Application Modeller. The other options are either invalid or not supported by Blue Prism. References:

<https://portal.blueprism.com/sites/default/files/2021-05/Blue%20Prism%20Certification%20-%20Associate%20D> (page 12)

NEW QUESTION: 21

User name and password information which is used by a Blue Prism Process to log into a business application, should be stored where?

- A. In a local hidden file
- B. In a password protected file
- C. In Credential Manager
- D. Environment Variable
- E. In Data Items in the Process
- F. In a shared Excel file

Answer: ([SHOW ANSWER](#))

Explanation

This is the correct place to store user name and password information that is used by a Blue Prism process to log into a business application. It allows the developer to securely store and manage credentials that can be used by multiple processes and objects. The other options are either insecure or not supported by Blue Prism.

References:

<https://bpdocs.blueprism.com/bp-6-10/en-us/helpDebug.htm?TocPath=Interface%7CStudio%7CProcess%20stud> (page 4)

Valid ASDEV01 Dumps shared by Actual4test.com for Helping Passing ASDEV01 Exam! Actual4test.com now offer the **newest ASDEV01 exam dumps**, the Actual4test.com ASDEV01 exam **questions have been updated** and **answers have been corrected** get the **newest** Actual4test.com ASDEV01 dumps with Test Engine here:

https://www.actual4test.com/ASDEV01_examcollection.html (51 Q&As Dumps, **30%OFF**

Special Discount: **Freepdfdumps**)