

Cisco.300-420.v2023-10-14.q103

Exam Code:	300-420
Exam Name:	Designing Cisco Enterprise Networks
Certification Provider:	Cisco
Free Question Number:	103
Version:	v2023-10-14
# of views:	1003
# of Questions views:	1030
https://www.freepdfdumps.com/Cisco.300-420.v2023-10-14.q103.html	

NEW QUESTION: 1

When a first hop redundancy solution is designed, which protocol ensures that load balancing occurs over multiple routers using a single virtual IP address and multiple virtual MAC addresses?

- A. GLBP
- B. IRDP
- C. HSRP
- D. VRRP

Answer: A ([LEAVE A REPLY](#))

NEW QUESTION: 2

How is internet access provided to a WAN edge router that is connected to a MPLS transport link?

- A. Internet access must be provided at the WAN Edge router through either a 4G/5G link or local Internet circuit
- B. An extranet must be provided in the MPLS transport network to allow private traffic to reach the public internet
- C. OMP advertises a default route from a WAN Edge router that is connected to the MPLS and internet transport networks
- D. TLOC extensions are used to route traffic to a WAN Edge router that is connected to the Internet transport network

Answer: D ([LEAVE A REPLY](#))

NEW QUESTION: 3

An engineer must design an addressing plan for a small business using a single /24 network. Each department must have its own subnet. Drag and drop the subnets from the left onto the departments requirements that they fulfill on the right. Not all options are used.



Answer:



NEW QUESTION: 4

An architect must develop a campus network solution that includes:

logically segmented and isolated networks

ability to communicate between network segments when required

support for overlapping IP addresses

widely available technologies to avoid purchasing specialized equipment Which solution must the architect select?

- A. vPC with HSRP
- B. VSS with IGP
- C. 802.1Q with HSRP
- D. VRF-Lite with OSPF

Answer: D (LEAVE A REPLY)

NEW QUESTION: 5

Prior to establishing full-mesh iPsec tunnels in a typical Cisco SD-WAN deployment, which mechanism do WAN Edge routers use to exchange Key information for data plane encryption?

- A. They use IKEv2 when exchanging keys with each other.
- B. They use vManage as a key exchange server.
- C. They use vSmart controllers as key exchange servers.
- D. They use vBond as a key exchange server.

Answer: C (LEAVE A REPLY)

NEW QUESTION: 6

An engineer is designing a QoS policy that queues excess packets for later transmission. Which mechanism must be included in the design?

- A. WRED
- B. policing
- C. shaping
- D. RED

Answer: C ([LEAVE A REPLY](#))

NEW QUESTION: 7

A company is planning to open two new branches and allocate the 2a01:c30:16:7009::3800/118 IPv6 network for the region. Each branch should have the capacity to accommodate maximum of 200 hosts. Which two networks should the company use? (Choose two.)

- A. 2a01:0c30:0016:7009::3a00/120
- B. 2a01:0c30:0016:7009::3b00/121
- C. 2a01:0c30:0016:7009::3c00/120
- D. 2a01:0c30:0016:7009::3a80/121
- E. 2a01:0c30:0016:7009::3b00/120

Answer: A,E ([LEAVE A REPLY](#))

NEW QUESTION: 8

An engineer is designing an IPv4 addressing plan for an enterprise with 1000 branches. Each branch requires a prefix for data and a prefix for voice. Each prefix must accommodate up to 128 hosts, and prefixes must facilitate summarization at aggregation points in the network. The security team requires a simple method for identifying voice prefixes. Which allocation does the engineer recommend from the RFC1918 address space?

- A. /24 prefixes for data from 10.0.0.0/15 and /24 prefixes for voice from 172.16.0.0/15
- B. /24 prefixes for data from 10.0.0.0/8 and /24 prefixes for voice from the next contiguous /24 prefix per site
- C. /25 prefixes for data from 10.0.0.0/8 and /25 prefixes for voice from the next contiguous /25 prefix per branch
- D. /24 prefixes for data from 10.0.0.0/8 and /24 prefixes for voice from 172.16.0.0/12

Answer: B ([LEAVE A REPLY](#))

For example:

Site 0001

Data:10.0.0.0/24

Voice: 10.0.1.0/24

summary route : 10.0.0.0/23

Site 0002

Data:10.0.2.0/24

Voice: 10.0.3.0/24

summary route: 10.0.2.0/23

....cont...

site 0129

Data:10.1.0.0/24

Voice: 10.1.1.0/24

summary route: 10.1.0.0/23

site 0130

Data:10.1.2.0/24

Voice: 10.1.3.0/24

summary route: 10.1.2.0/23

so 3rd octet is odd number assigned to voice, and even number assigned to data; for security team to recongize voice prefix, use an ACL with wildcast to filter odd number on third octet, started from 10.0.1.0 0.0.254.255, 10.1.1.0 0.0.254.255....., 10.1.1.0 0.0.254.255 etc; for 10.0.1.0 0.0.254.255, any IP in binary that started with 00001010.00000000.xxxxxxx1.xxxxxxxx will be matched (x = either 0 or 1), covert 3rd octet into dec, for example, 10000001 = 129 which is a voice VLAN.

NEW QUESTION: 9

Company A recently acquired another company. Users of the newly acquired company must be able to access a server that exists on Company A's network, both companies use overlapping IP address ranges. Which action conserves IP address space and provides access to the server?

- A. Use a single IP address to create a static NAT entry
- B. Use a single IP address to create overload NAT
- C. Build one-to-one NAT translation for every user that needs access
- D. Re-IP overlapping address space in the acquired company

Answer: ([SHOW ANSWER](#))

NEW QUESTION: 10

Drag and drop the elements from the left onto the YANG models where they are used on the right.

GBP

XML

gNMI

NETCONF

CISCO

IETF YANG Push Coverage

OpenConfig Telemetry Coverage

Answer:

GBP

XML

gNMI

NETCONF

IETF YANG Push Coverage

XML

NETCONF

OpenConfig Telemetry Coverage

GBP

gNMI

NEW QUESTION: 11

Which information update is carried by OMP and enables the Cisco SD-WAN to build a secure overlay fabric on top of any public or private transport without regard for the actual link IP?

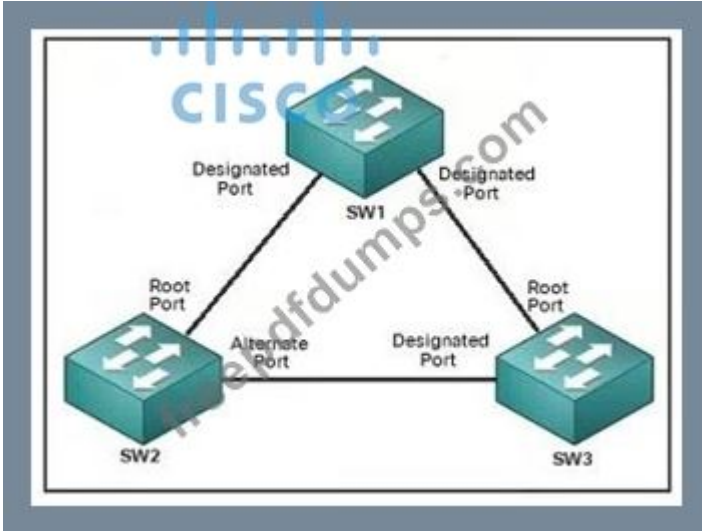
- A. DTLS
- B. RLOC
- C. TLOC

D. LISP PITR

Answer: ([SHOW ANSWER](#))

NEW QUESTION: 12

Refer to the exhibit.



Refer to the exhibit. The connection between SW2 and SW3 is fiber and occasionally experiences unidirectional link failure. An architect must optimize the network to reduce the change of layer2 forwarding loops when the link fails. Which solution should the architect include?

- A. Utilize BPDU guard on SW1
- B. Utilize loop guard on SW2
- C. Utilize root guard on SW1.
- D. Utilize 8PDU filter on SW3.

Answer: ([SHOW ANSWER](#))

NEW QUESTION: 13

An engineer uses Postman and YANG to configure a router with:

- OSPF process ID 100
- network 10.10.10.0/28 enabled for Area 0

Which get-config replay verifies that the model set was designed correctly?

```
<rpc-reply message-id="urn:uuid:1b3d05cd-8118-3e6a-6c05-012354678aaf" xmlns="urn:ietf:params:xml:ns:netconf:base:1.0" xmlns:nc="urn:ietf:params:json:ns:netconf:base:1.0">
  <data>
    <native json="http://cisco.com/ns/yang/netconf/ios">
      <router>
        <ospf>
          <id>100</id>
          <network>
            <ip>10.10.10.0</ip>
            <mask>0.0.0.15</mask>
            <area>0</area>
          </network>
        </ospf>
      </router>
    </native>
  </data>
</rpc-reply>
```



```

<rpc-reply message-id="urn:uuid:1b3d05cd-8118-3e6a-6c05-012435678aaf" xmlns="urn:ietf:params:xml:ns:netconf:base:1.0" xmlns:nc="urn:ietf:params:xml:ns:netconf:base:1.0">
  <data>
    <native xmlns="http://cisco.com/ns/yang/ned/ios">
      <router>
        <ospf>
          <id>100</id>
          <network>
            <ip>10.10.10.0</ip>
            <mask>255.255.255.240</mask>
            <area>0</area>
          </network>
        </ospf>
      </router>
    </native>
  </data>
</rpc-reply>

```

Activate Window
Go to Settings to acti

```

<rpc-reply message-id="urn:uuid:1b3d05cd-8118-3e6a-6c05-021345678aaf" xmlns="urn:ietf:params:xml:ns:netconf:base:1.0" xmlns:nc="urn:ietf:params:xml:ns:netconf:base:1.0">
  <data>
    <native xmlns="http://cisco.com/ns/yang/ned/ios">
      <router>
        <ospf>
          <id>100</id>
          <network>
            <ip>10.10.10.0</ip>
            <mask>0.0.0.240</mask>
            <area>0</area>
          </network>
        </ospf>
      </router>
    </native>
  </data>
</rpc-reply>

```

```

<rpc-reply message-id="urn:uuid:1b3d05cd-8118-3e6a-6c05-394733226aaf" xmlns="urn:ietf:params:xml:ns:netconf:base:1.0" xmlns:nc="urn:ietf:params:xml:ns:netconf:base:1.0">
  <data>
    <native xmlns="http://cisco.com/ns/yang/ned/ios">
      <router>
        <ospf>
          <id>100</id>
          <network>
            <ip>10.10.10.0</ip>
            <mask>0.0.0.15</mask>
            <area>0</area>
          </network>
        </ospf>
      </router>
    </native>
  </data>
</rpc-reply>

```

Activate Windo
Go to Settings to ac

- A. Option C
- B. Option B
- C. Option D
- D. Option A

Answer: C ([LEAVE A REPLY](#))

NEW QUESTION: 14

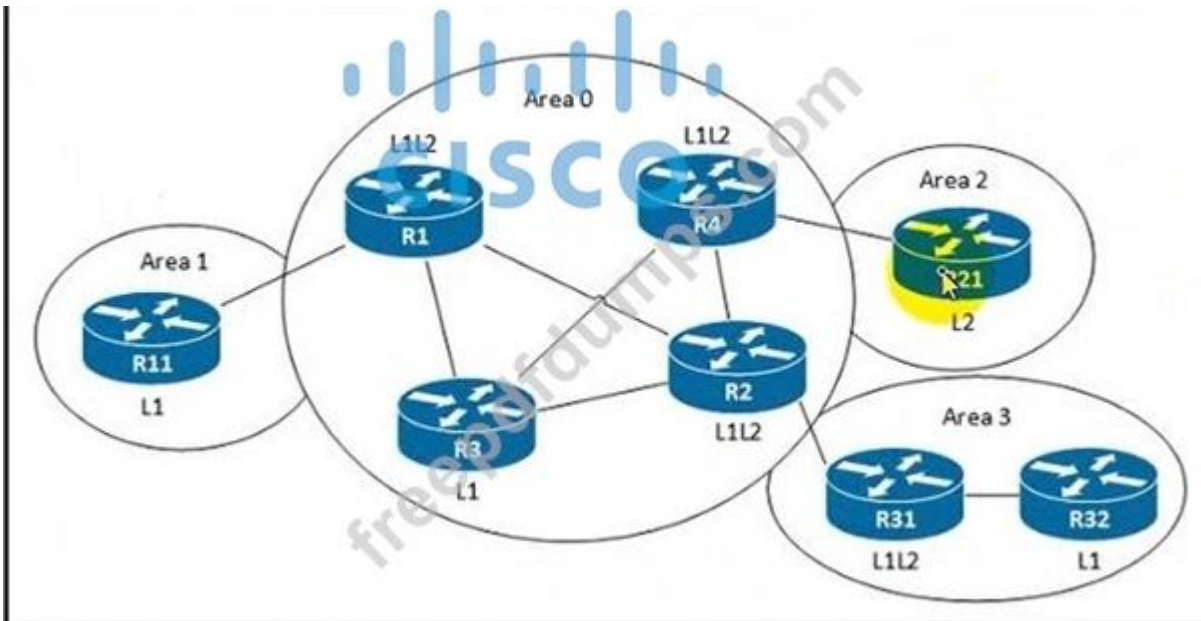
The customer solution requires QoS to support streaming multimedia over a WAN. An architect chooses to use Per-Hop Behavior. Which solution should the engineer use to mark traffic traveling between branch sites?

- A. LLQ with DSCP AF4
- B. LLQ with DSCP EF
- C. CBWFQ with DSCP AF2
- D. CBWFQ with DSCP AF3

Answer: ([SHOW ANSWER](#)**)**

NEW QUESTION: 15

Refer to the exhibit.



Refer to the exhibit. A customer experienced an unexpected network outage when the link between R1 and R2 went down. An architect must design a solution to ensure network continuity in the event the link fails again. Which solution should the design include?

- A. Make R11 an L2 router.
- B. Make R3 an L1L2 router
- C. Make R31 an L1 router.
- D. Make Area 0 L2-only

Answer: B (LEAVE A REPLY)

NEW QUESTION: 16

An engineer uses Postman and YANG to configure a router with:

OSPF process ID 400

network 192.168.128.128/25 enabled for Area 0

Which get-config reply verifies that the model set was designed correctly?

A.

```

<rpc-reply message-id="urn:uuid:1b3d05cd-8118-3e6a-6c05-021345678aaf" xmlns="urn:ietf:params:xml:ns:netconf:base:1.0" xmlns:
<data>
  <native xmlns="http://cisco.com/ns/yang/ned/ios">
    <router>
      <ospf>
        <id>400</id>
        <network>
          <ip>192.168.128.128</ip>
          <mask>0.0.0.128</mask>
          <area>0</area>
        </network>
      </ospf>
    </router>
  </native>
</data>
</rpc-reply>

```

B.

```
<rpc-reply message-id="urn:uuid:1b3d05cd-8118-3e6a-6c05-012435678aaf" xmlns="urn:ietf:params:xml:ns:netconf:base:1.0" xmlns:nc="urn:ietf:params:xml:ns:netconf:base:1.0">
<data>
<native xmlns="http://cisco.com/ns/yang/ietf/ios">
<router>
<ospf>
<id>400</id>
<network>
<ip>192.168.128.128</ip>
<mask>255.255.255.128</mask>
<area>0</area>
</network>
</ospf>
</router>
</native>
</data>
</rpc-reply>
```

C.

```
<rpc-reply message-id="urn:uuid:1b3d05cd-8118-3e6a-6c05-403478311aaf" xmlns="urn:ietf:params:xml:ns:netconf:base:1.0" xmlns:nc="urn:ietf:params:xml:ns:netconf:base:1.0">
<data>
<native xmlns="http://cisco.com/ns/yang/ietf/ios">
<router>
<ospf>
<id>400</id>
<network>
<ip>192.168.128.128</ip>
<mask>0.0.0.127</mask>
<area>0</area>
</network>
</ospf>
</router>
</native>
</data>
</rpc-reply>
```

D.

```
<rpc-reply message-id="urn:uuid:1b3d05cd-8118-3e6a-6c05-012354678aaf" xmlns="urn:ietf:params:xml:ns:netconf:base:1.0" xmlns:nc="urn:ietf:params:xml:ns:netconf:base:1.0">
<data>
<native json="http://cisco.com/ns/yang/ietf/ios">
<router>
<ospf>
<id>400</id>
<network>
<ip>192.168.128.128</ip>
<mask>0.0.0.127</mask>
<area>0</area>
</network>
</ospf>
</router>
</native>
</data>
</rpc-reply>
```

Answer: ([SHOW ANSWER](#))

Valid 300-420 Dumps shared by Actual4test.com for Helping Passing 300-420 Exam!
Actual4test.com now offer the **newest 300-420 exam dumps**, the Actual4test.com 300-420 exam **questions have been updated** and **answers have been corrected** get the **newest** Actual4test.com 300-420 dumps with Test Engine here:

https://www.actual4test.com/300-420_examcollection.html (341 Q&As Dumps, **30%OFF**)

Special Discount: **Freepdfdumps**)

NEW QUESTION: 17

Which consideration must be taken into account when using the DHCP relay feature in a Cisco SD-Access Architecture?

- A. DHCP-relay must be enabled on fabric edge nodes to provide the correct mapping of DHCP scope to the local anycast gateway.
- B. A DHCP server must be enabled on the border nodes to allow subnets to span multiple fabric edges.
- C. DHCP servers must support Cisco SD-Access extensions to correctly assign IPs to endpoints in an SD-Access fabric with anycast gateway.
- D. DHCP Option-82 must be enabled to map the circuit IP option to the access fabric node where the DHCP discover originated.

Answer: D (LEAVE A REPLY)

https://www.cisco.com/c/en/us/td/docs/cloud-systems-management/network-automation-and-management/dna-center/tech_notes/sda_dhcp/b_cisco_sda_dhcp.html

NEW QUESTION: 18

Drag and drop the descriptions from the left onto the corresponding VPN types on the rights.

The service provider participates in routing with the customer.

The customer controls the IP routing and policy governance.

Sites appear to each other to be directly connected at Layer 3.

Sites appear to be connected via the MPLS service provider network.

The customer initiates Layer 3 connectivity with the remote sites.

The customer establishes Layer 3 connectivity with the service provider edge device.

Layer 2 VPN

MPLS Layer 3 VPN

Answer:

The service provider participates in routing with the customer.

The customer controls the IP routing and policy governance.

Sites appear to each other to be directly connected at Layer 3.

Sites appear to be connected via the MPLS service provider network.

The customer initiates Layer 3 connectivity with the remote sites.

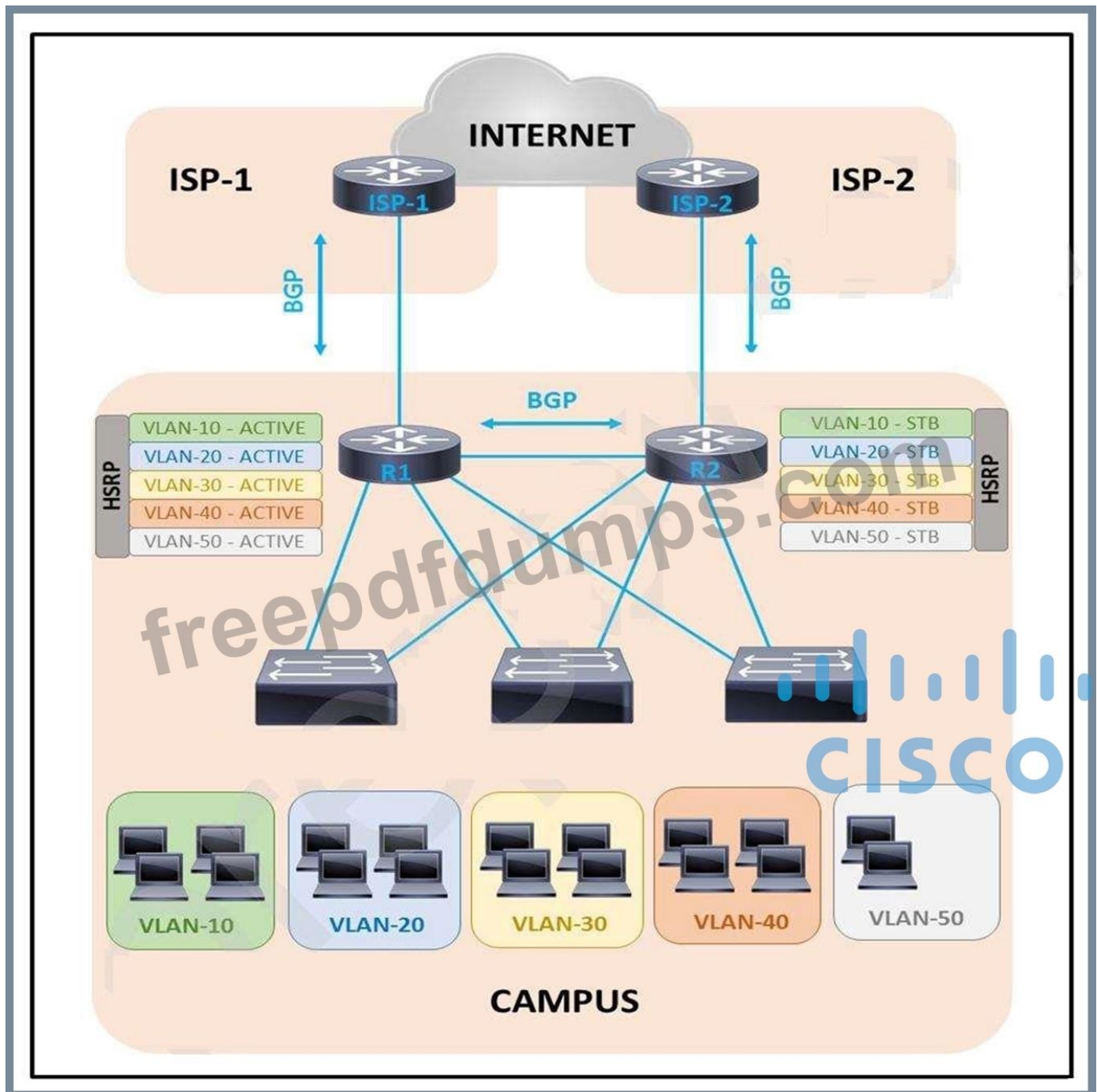
The customer establishes Layer 3 connectivity with the service provider edge device.

Layer 2 VPN

MPLS Layer 3 VPN

NEW QUESTION: 19

Refer to the exhibit.



A customer is running HSRP on the core routers. Over time the company has grown and requires more network capacity. In the current environment, some of the downstream interfaces are almost fully utilized, but others are not. Which solution improves the situation?

- A. Add more interfaces to R1 and R2.
- B. Enable RSTP on the downstream switches.
- C. Configure port channel toward downstream switches.
- D. Make router R2 active for half of the VLANs.

Answer: D ([LEAVE A REPLY](#))

NEW QUESTION: 20

A large chain of stores currently uses MPLS-based T1 lines to connect their stores to their data center. An architect must design a new solution to improve availability and reduce costs while keeping these considerations in mind:

- * The company uses multicast to deliver training to the stores.
- * The company uses dynamic routing protocols and has implemented QoS.
- * To simplify deployments, tunnels should be created dynamically on the hub when additional stores open.

Which solution should be included in this design?

- A. VPLS
- B. DMVPN
- C. IPsec
- D. GET VPN

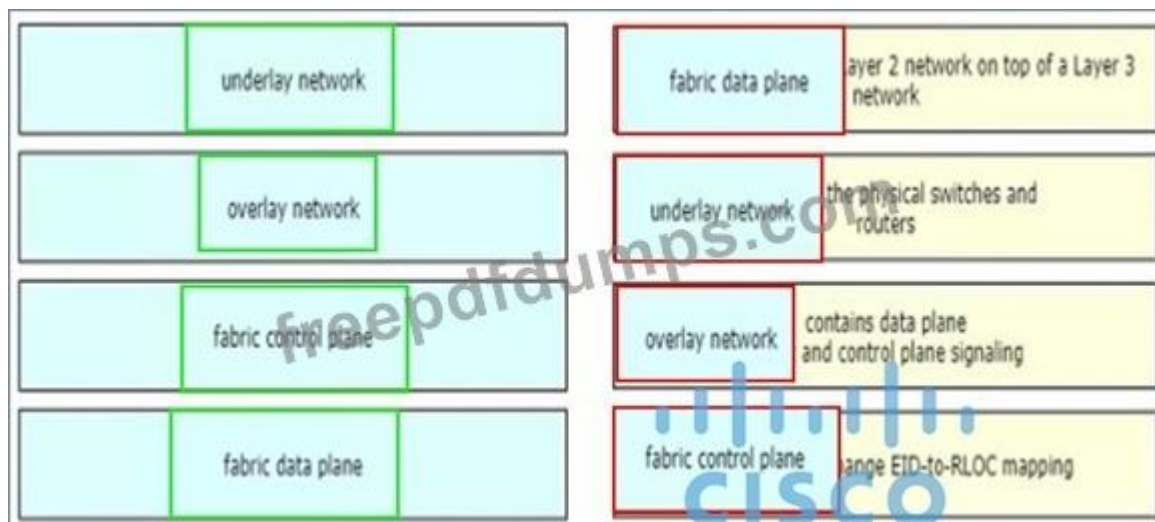
Answer: B (LEAVE A REPLY)

NEW QUESTION: 21

Drag and drop the components in a Cisco SD-Access architecture from the left onto their descriptions on the right.



Answer:



NEW QUESTION: 22

Which feature is required for graceful restart to recover from a processor failure?

- A. Cisco Express Forwarding
- B. Virtual Switch System
- C. Stateful Switchover
- D. Bidirectional Forwarding Detection

Answer: C ([LEAVE A REPLY](#))

https://archive.nanog.org/meetings/nanog42/presentations/Weissner_SSO.pdf The Stateful Switchover (SSO) feature works with Nonstop Forwarding (NSF) in Cisco software to minimize the amount of time a network is unavailable to its users following a switchover. The primary objective of SSO is to improve the availability of networks constructed with Cisco routers.

NEW QUESTION: 23

An engineer is designing a WAN solution for a customer with teams in different branch locations that need to communicate. The teams also need to access enterprise applications hosted in the data center and the cloud. The customer also must provide guests with connectivity to the internet only, and the internet gateway is located in the data center. Which solution must the engineer choose?

- A. MPLS Layer 3 VPN with one VRF for corporate access and a separate VRF for guests
- B. firewall placed in data center that filters any traffic from guests
- C. WAN connectivity from a different service provider for guests
- D. MPLS Layer 3 VPN with a separate VRF for each branch location

Answer: ([SHOW ANSWER](#))

NEW QUESTION: 24

In a multicast network, which condition must be met for an RPF check to be performed on the RP address'?

- A. The PIM DM device receives a multicast packet and has no directly connected PIM neighbor
- B. The PIM router or multilayer switch has a source-tree state
- C. The PIM DM device receives a multicast packet and has no directly connected members
- D. The PIM router or multilayer switch has a shared-tree state

Answer: D ([LEAVE A REPLY](#))

NEW QUESTION: 25

An engineer is looking for a standards-driven YANG model to manage a multivendor network environment. Which model must the engineer choose?

- A. IETF
- B. Native
- C. IEEE NETCONF
- D. OpenConfig

Answer: ([SHOW ANSWER](#))

NEW QUESTION: 26

An architect must create a QoS solution for a customer to ensure that a 40 Mbps Internet connection is shared between four subnets based on these requirements:

- * Each subnet must receive no less than 10 Mbps of download bandwidth during peak traffic times.
- * A subnet can use up to 40 Mbps during nonpeak traffic times if the other subnets are idle.
- * Download traffic must never experience a delay.

Which solution must the architect choose?

- A. rate-limiting and shaping
- B. bandwidth percentage and policing
- C. shaping and policing
- D. bandwidth percentage and rate-limiting

Answer: B (LEAVE A REPLY)

Selected answer: B

"Download traffic must never experience a delay."

This means we shouldn't be using Shaping at any point (since that puts packets into a buffer and sends them out later on when congestion has been reduced) Also: "Rate-limiting" is a bigger term and under it we have 2 things: "Policing" and "Shaping"

NEW QUESTION: 27

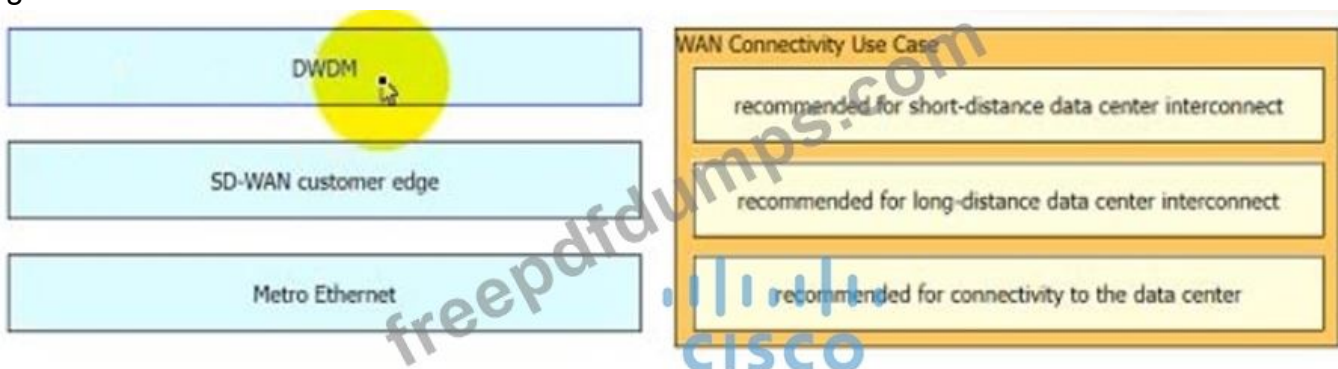
Which two BGP features will result in successful route exchanges between eBGP neighbors sharing the same AS number? (Choose two.)

- A. advertise-best-external
- B. client-to-client reflection
- C. as-override
- D. allow-as-in
- E. bestpath as-path ignore

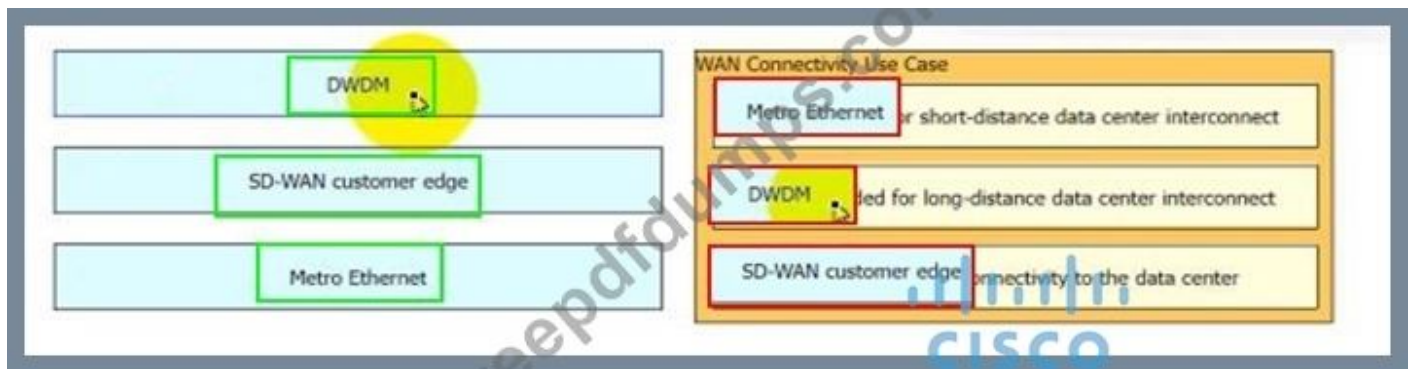
Answer: C,D (LEAVE A REPLY)

NEW QUESTION: 28

Drag and drop the types of WAN connectivity from the left onto the connectivity use cases on the right.



Answer:



NEW QUESTION: 29

Which two functions is the Cisco SD-Access Edge Node responsible for? (Choose two.)

- A. Act as anycast layer 3 gateway
- B. Advertise EID subnets
- C. Map users to virtual network
- D. Act as LISP proxy tunnel router
- E. Route and transport IP traffic

Answer: A,C (LEAVE A REPLY)

<https://www.cisco.com/c/en/us/td/docs/solutions/CVD/Campus/cisco-sda-design-guide.html#EdgeNode>

NEW QUESTION: 30

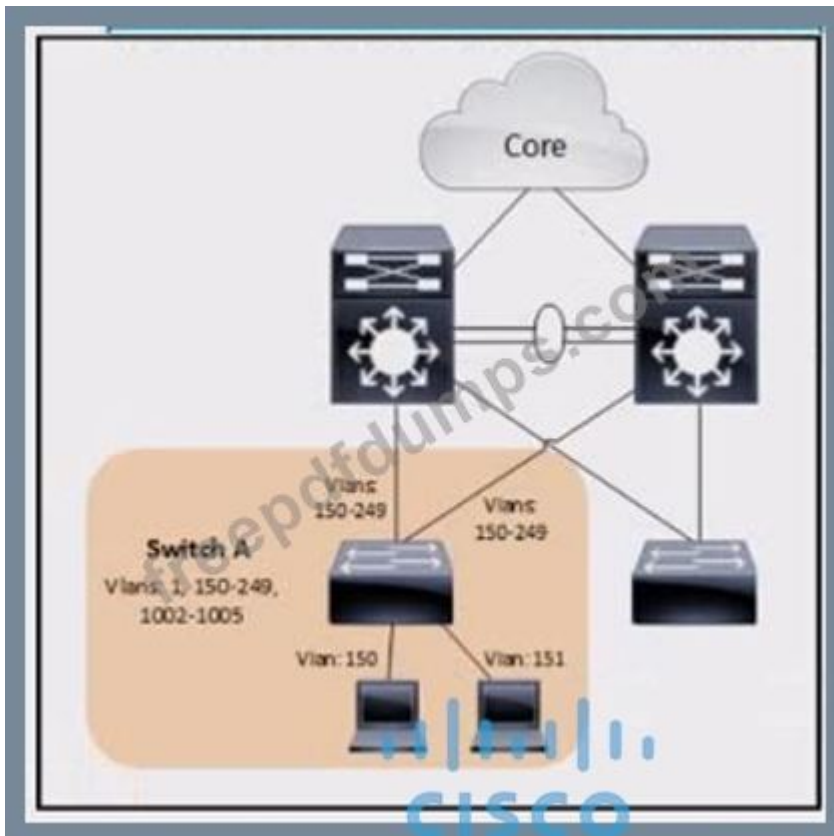
In an SD-WAN architecture, which methods are used to bootstrap a vEdge router?

- A. DNS records or DHCP options
- B. vManage or DNS records
- C. ZTP or manual configuration
- D. DHCP options or manual configuration

Answer: C (LEAVE A REPLY)

NEW QUESTION: 31

Refer to the exhibit.



Refer to the exhibit An engineer working for a telecommunication company with an employee ID 4449:30 959 Is calculating STP scalability for switches to ensure that the numbers are below the maximum supported value for STP logical ports How many logical interfaces are active for switch A?

- A. 202
- B. 307
- C. 4
- D. 100

Answer: ([SHOW ANSWER](#))

Valid 300-420 Dumps shared by Actual4test.com for Helping Passing 300-420 Exam! Actual4test.com now offer the **newest 300-420 exam dumps**, the Actual4test.com 300-420 exam **questions have been updated** and **answers have been corrected** get the **newest** Actual4test.com 300-420 dumps with Test Engine here:

https://www.actual4test.com/300-420_examcollection.html (341 Q&As Dumps, **30%OFF**

Special Discount: Freepdfdumps)

NEW QUESTION: 32

An engineer must design a management network that enables SSH, NTP, FTP, and SNMP over the production network. The design requires the management of routers and switches that exist across different networks. Which feature must the design include?

- A. dedicated management VRF connection per device
- B. Management Plane Protection
- C. dedicated management console connection per device
- D. terminal server

Answer: A ([LEAVE A REPLY](#))

NEW QUESTION: 33

Which function does the Cisco SD-Access intermediate node perform?

- A. Act as LISP proxy tunnel router.
- B. Act as an anycast Layer 3 gateway.
- C. Map users to a virtual network.
- D. Route and transport IP traffic.

Answer: ([SHOW ANSWER](#))

NEW QUESTION: 34

Which feature provides the capability for intra-VN traffic filtering and control within the Cisco SO-Access architecture?

- A. scalable groups
- B. prefix list
- C. service policy
- D. MAC ACL

Answer: ([SHOW ANSWER](#))

NEW QUESTION: 35

In the SD-WAN underlay network, which WAN Edge VPN ID is defined as the transport VPN and is used to carry control traffic?

- A. VPN 512
- B. VPN 256
- C. VPN 0
- D. VPN 128

Answer: C ([LEAVE A REPLY](#))

NEW QUESTION: 36

Which design achieves SD-WAN control plane redundancy?

- A. Configuring BFD on the WAN Edge routers
- B. Managing the underlay network with OMP
- C. Using multiple instances of vManage in clusters
- D. Deploying using a virtual platform like UCS or CSP

Answer: C ([LEAVE A REPLY](#))

NEW QUESTION: 37

A customer requests a VPN solution to connect multiple sites with the company headquarters. All the sites use the same IP subnet. The engineer plans to use VPLS. Which solutions must the engineer include in the design?

- A. address translation to hide overlapping subnets
- B. 802.1Q connectivity on the LAN side of the CE
- C. different VLANs on each site
- D. route exchange with the service provider

Answer: B ([LEAVE A REPLY](#))

NEW QUESTION: 38

An engineer must design a QoS solution for a customer. The network currently supports data only, but the customer will roll out VoIP and IP video in conjunction with the new QoS solution. The engineer plans to use DiffServ. To ensure priority for voice services, which model must the design include?

- A. 8-class model
- B. 12-class model
- C. 6-class model
- D. 4-class model

Answer: A ([LEAVE A REPLY](#))

NEW QUESTION: 39

An engineer must design a routing solution for a company that is single-homed to an ISP. The company's goal is to run BGP between the CE and the PE devices. To support running BGP, the company obtained a public AS number and IP subnet from ARIN. Which solution must the engineer select?

- A. * The customer announces the public IP subnet to the ISP
* The ISP announces the default route to the customer.
- B. * The ISP announces the customer public IP subnet.
* The ISP announces the partial BGP table to the customer.
- C. * The customer announces the public IP subnet to the ISP
* The ISP announces the BGP table to the customer
- D. * The customer announces the default route to the ISP
* The ISP announces the default route to the customer

Answer: B ([LEAVE A REPLY](#))

NEW QUESTION: 40

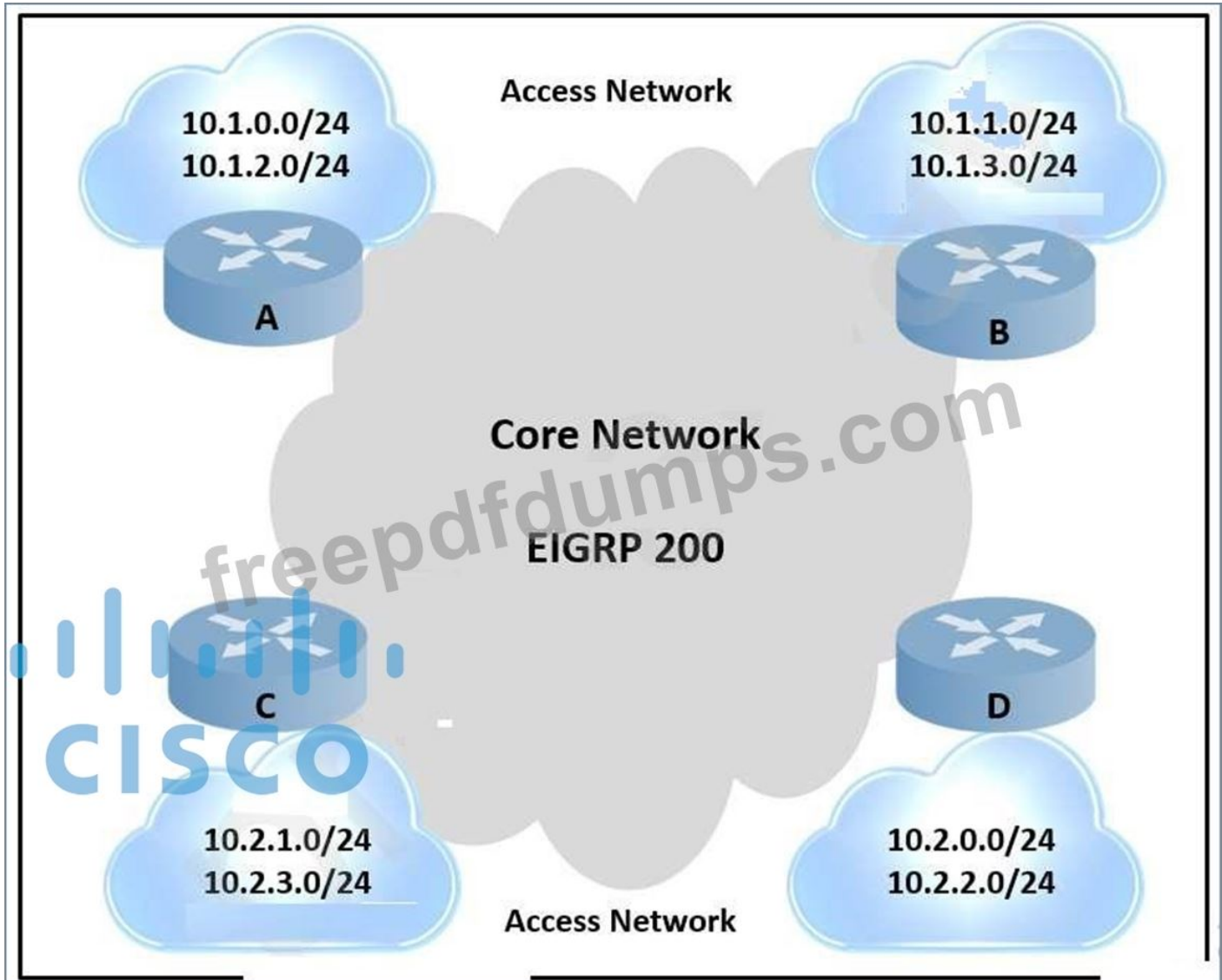
What is the function of the multicast Reverse Path Forwarding check?

- A. It prevents bootstrap messages from reaching all routers.
- B. It is used to discover and announce RP-set information.
- C. It serves as an Auto RP Mapping agent.
- D. It allows for a loop-free distribution tree from the source to receivers.

Answer: ([SHOW ANSWER](#))

NEW QUESTION: 41

Refer to the exhibit.



An engineer is designing a routing solution for a customer. The design must ensure that a failure of network 10.1.0.0/24, 10.1.2.0/24, 10.2.1.0/24, or 10.2.3.0/24 does not impact the core. It also requires fast convergence time during any link failover in the core or access networks. Which solution must the engineer select?

- A. Enable graceful restart on routers A and C.
- B. Enable FRR for the connected networks of routers A and C.
- C. Enable summarization on routers A and C.
- D. Add aggregation layer between core and access networks.

Answer: ([SHOW ANSWER](#))

NEW QUESTION: 42

A network engineer is redesigning a company's QoS solution. The company is currently using IP Precedence, but the engineer plans to move to DiffServ. It is important that the new solution provide backward compatibility with the current solution. Which technology should the design include?

- A. class selector code points
- B. expedited forwarding
- C. default per hop behavior
- D. assured forwarding

Answer: A (LEAVE A REPLY)

NEW QUESTION: 43

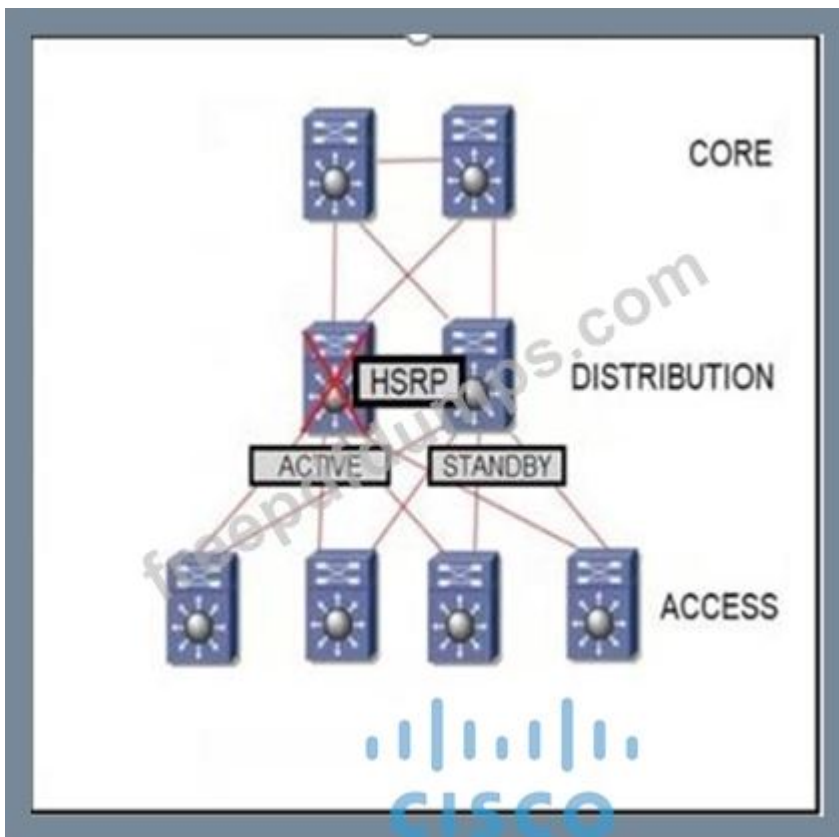
Which two statements about VRRP advertisements are true? (Choose two.)

- A. They are sent only from the master router.
- B. They are sent every three seconds by default.
- C. They include priority information.
- D. They include VRRP timer information.
- E. They are sent from the master router and standby routers.

Answer: A,C (LEAVE A REPLY)

NEW QUESTION: 44

Refer to the exhibit.



Refer to the exhibit. The distribution switches serve as the layer 3 boundary. HSRP preemption is enabled. When the primary switch comes back after a failure, traffic is initially dropped. Which solution must be implemented to improve the design?

- A. Use the preempt delay feature on the backup HSRP device
- B. Use the preempt delay feature on the primary HSRP device.
- C. Configure a higher mac-refresh interval on both HSRP devices
- D. Increase the hello timers on both HSRP devices

Answer: B (LEAVE A REPLY)

NEW QUESTION: 45

In a Cisco SD-Access fabric, which node facilitates connectivity between the fabric and networks external to the fabric?

- A. edge
- B. border
- C. intermediate
- D. control plane

Answer: B (LEAVE A REPLY)

NEW QUESTION: 46

An engineer is working for a large cable TV provider that requires multiple sources streaming video on different channels using multicast with no rendezvous point. Which multicast protocol meets these requirements?

- A. PIM-SM
- B. PIM-SSM
- C. any-source multicast
- D. BIDIR-PIM

Answer: (SHOW ANSWER)

PIM-SSM is suitable for when well-known sources exist within the local PIM domain and for broadcast applications. Also, PIM-SSM eliminates the RPs and shared trees

Valid 300-420 Dumps shared by Actual4test.com for Helping Passing 300-420 Exam!
Actual4test.com now offer the **newest 300-420 exam dumps**, the Actual4test.com 300-420 exam **questions have been updated** and **answers have been corrected** get the **newest** Actual4test.com 300-420 dumps with Test Engine here:

https://www.actual4test.com/300-420_examcollection.html (341 Q&As Dumps, **30%OFF**

Special Discount: Freepdfdumps)

NEW QUESTION: 47

Which two border nodes are available in the Cisco SD-Access architecture? (Choose two.)

- A. extended border
- B. edge border
- C. internal border
- D. anywhere border
- E. intermediate border

Answer: (SHOW ANSWER)

There are 3 types of border nodes in SD-Access:

External. Default exit from fabric with no specific routes injection

Internal. Gateway only for a set of networks, such as shared services prefixes Anywhere.

Combination of external and internal functionality

NEW QUESTION: 48

An engineer must design a management network for a customer's enterprise network. The design must:

- * provide the ability to grant and revoke access privileges
- * allow only protocols SSH, NTP, FTP, and SNMP
- * restrict access to management Interfaces

Which solution must the engineer choose to meet the requirements?

- A. out-of-band
- B. mGRE
- C. enterprise internal private
- D. in-band

Answer: (SHOW ANSWER)

NEW QUESTION: 49

An infrastructure team is concerned about the shared memory utilization of a device, and for this reason, they need to monitor the device state. Which solution limits impact on the device and provides the required data?

- A. IPFIX
- B. static telemetry
- C. on-change subscription
- D. periodic subscription

Answer: C (LEAVE A REPLY)

There are two types of subscriptions: periodic and on-change. With periodic subscription, data is streamed out to the destination at the configured interval. It continuously sends data for the lifetime of that subscription. With on-change, data is published only when a change in the data occurs such as when an interface or OSPF neighbor goes down.

<https://developer.cisco.com/docs/ios-xe/#!streaming-telemetry-quick-start-guide/streaming-telemetry>

NEW QUESTION: 50

Refer to the exhibit. An architect must create a stable and scalable EIGRP solution for a customer. The design must:

- * conserve bandwidth, memory, and CPU processing
- * prevent suboptimal routing
- * avoid any unnecessary queries

Which two solutions must the architect select? (Choose two.)

- A. distribute lists
- B. stub routing
- C. static redistribution
- D. prefix lists
- E. route summarization

Answer: ([SHOW ANSWER](#))

NEW QUESTION: 51

Since installing a Cisco TelePresence system, the company is experiencing other application having response issues when the system is in use. As a result, the company asked an architect to recommend a QoS solution. The customer is currently using a CBWFQ policy to manage traffic on an internet connection with a speed of 100 Mbps. Which link-capacity limit must the architect choose for strict-priority for the real-time traffic?

- A. 25 Mbps
- B. 50 Mbps
- C. 33 Mbps
- D. 75 Mbps

Answer: C ([LEAVE A REPLY](#))

https://www.cisco.com/c/en/us/td/docs/ios-xml/ios/qos_conmgt/configuration/xr-3s/qos-conmgt-xr-3s-book/qos-conmgt-overview.html#GUID-48F6AF58-5CCC-44A0-B868-125AE453FF2A
(75%20Mbps) The sum of all bandwidth allocation on an interface cannot exceed 75 percent of the total available interface bandwidth. The remaining 25 percent is used for other overhead, including Layer 2 overhead, routing traffic, and best-effort traffic. Bandwidth for the CBWFQ class-default class, for instance, is taken from the remaining 25 percent.

NEW QUESTION: 52

Which two techniques improve the application experience in a Cisco SD-WAN design? (Choose two.)

- A. utilizing quality of service
- B. utilizing forward error correction
- C. implementing a stateful application firewall
- D. implementing Cisco Umbrella
- E. implementing AMP

Answer: A,B ([LEAVE A REPLY](#))

NEW QUESTION: 53

Which control-plane technology allows the same subnet to exist across multiple network locations?

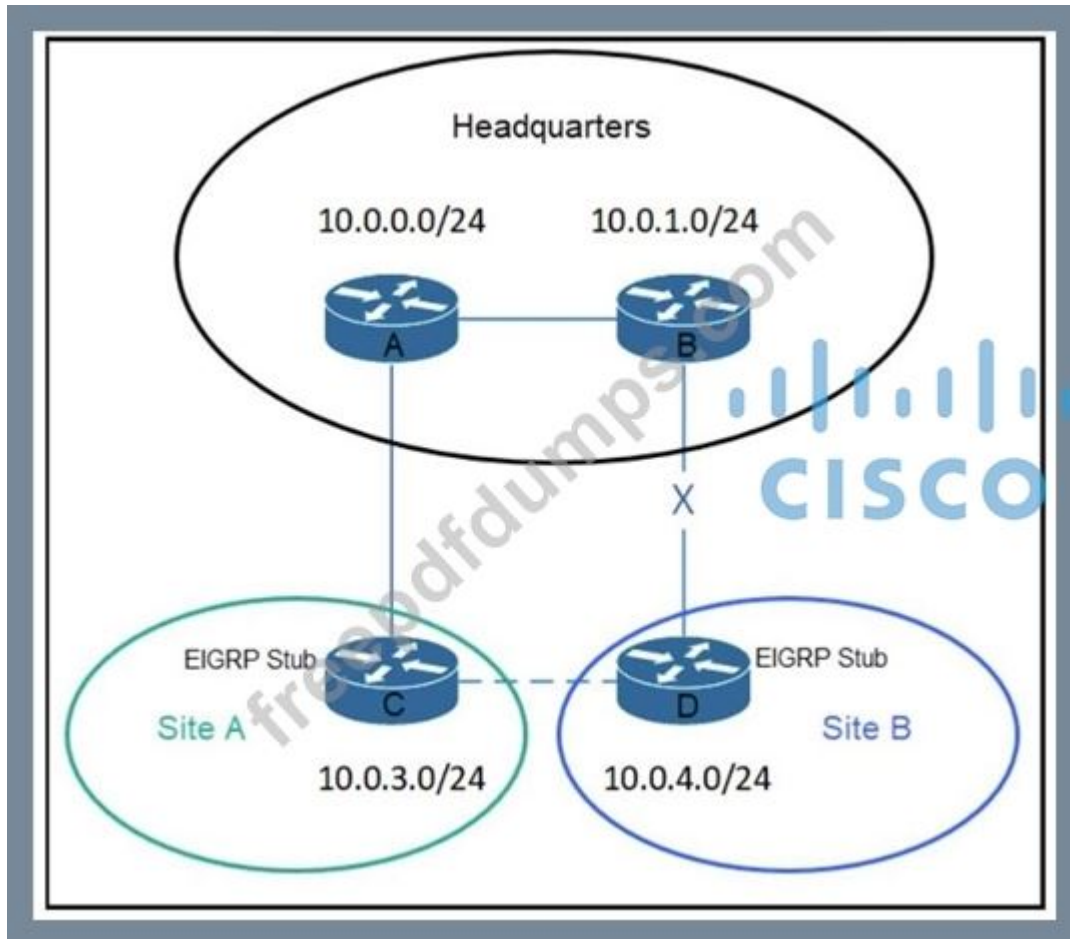
- A. LISP
- B. VXLAN
- C. FabricPath
- D. ISE mobility services

Answer: A (LEAVE A REPLY)

<https://www.cisco.com/c/en/us/td/docs/solutions/CVD/Campus/cisco-sda-design-guide.html>

NEW QUESTION: 54

Refer to the exhibit.



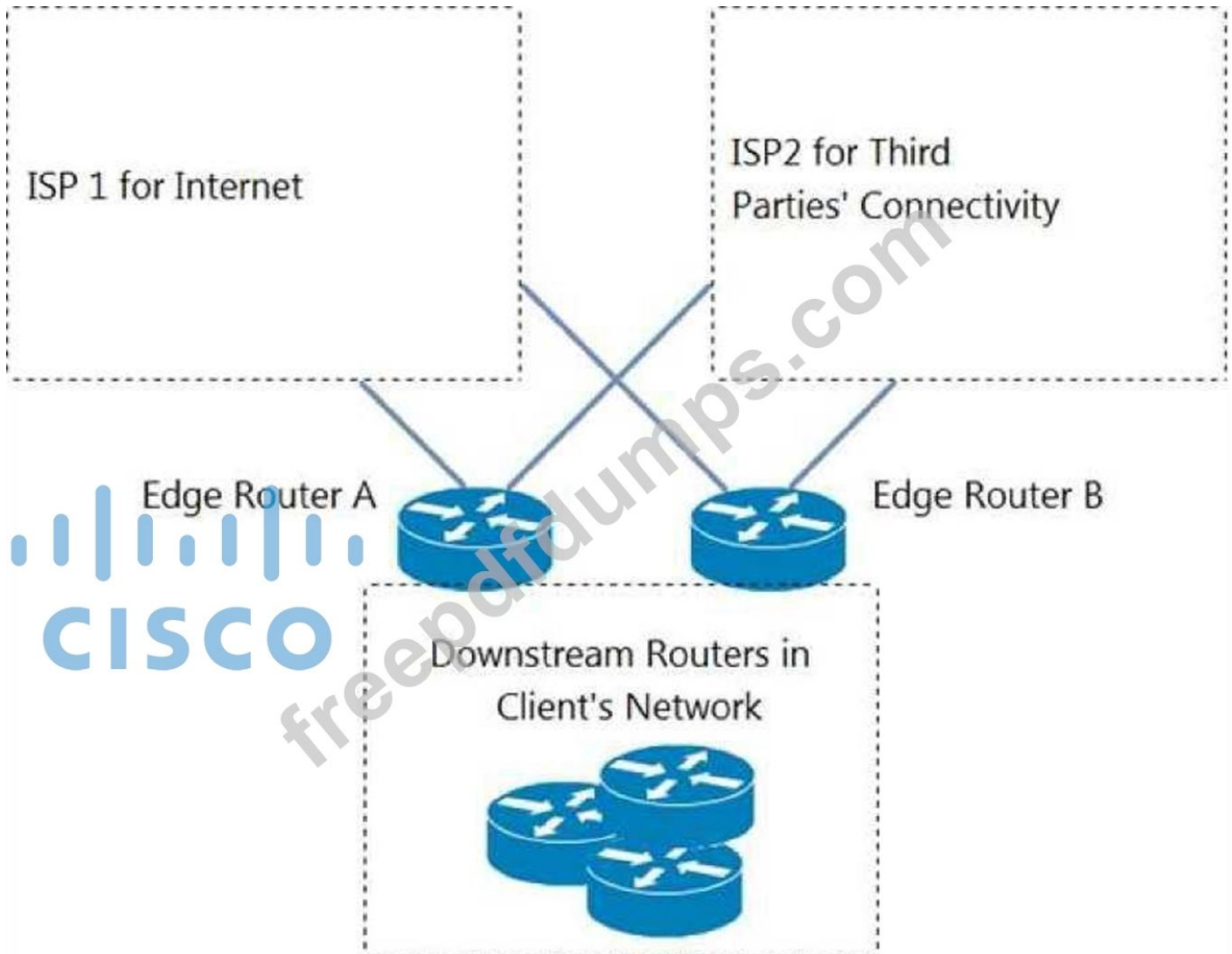
An architect is designing a routing solution for a company. The new design will add a circuit routers C and D to protect against loss of connectivity to 10.0.4.0/24 during a link failure between routers B and D. Which solution must the architect choose?

- A. Stub redistributed
- B. Stub receive-only
- C. Stub leak-map
- D. Stub connected

Answer: D (LEAVE A REPLY)

NEW QUESTION: 55

Refer to the exhibit.



Refer to the exhibit. An engineer is designing a BGP solution for a client that peers with ISP1 for full Internet connectivity and with ISP2 for direct exchange of routes for several third parties. Which action, when implemented on the edge routers, enables the client network to reach the Internet through ISP1?

- A. Run an eBGP session within different VRFs for each ISP.
- B. Apply the AS-path prepend feature for ISP2.
- C. Advertise a default route for downstream routers within the client network.
- D. Apply route filtering such that the client advertises only routes originated from its own AS.

Answer: C ([LEAVE A REPLY](#))

NEW QUESTION: 56

When vEdge router redundancy is designed, which FHRP is supported?

- A. VRRP
- B. GLBP
- C. OMP

D. HSRP

Answer: ([SHOW ANSWER](#))

NEW QUESTION: 57

What are two valid scaling techniques when an EIGRP network is designed that consists of more than 1000 routers? (Choose two.)

- A. Modify delay parameters on the links
- B. Use the distribute-list command to filter routes
- C. Used sub-second timers
- D. Implement multiple EIGRP autonomous systems
- E. Use structured hierarchical topology with route summarization

Answer: D,E ([LEAVE A REPLY](#))

NEW QUESTION: 58

Drag and drop the characteristics from the left onto the correct telemetry mode on the right.

The collector initiates a session to the device

supports TCP, UDP, and gRPC

The device initiates a session to the collector

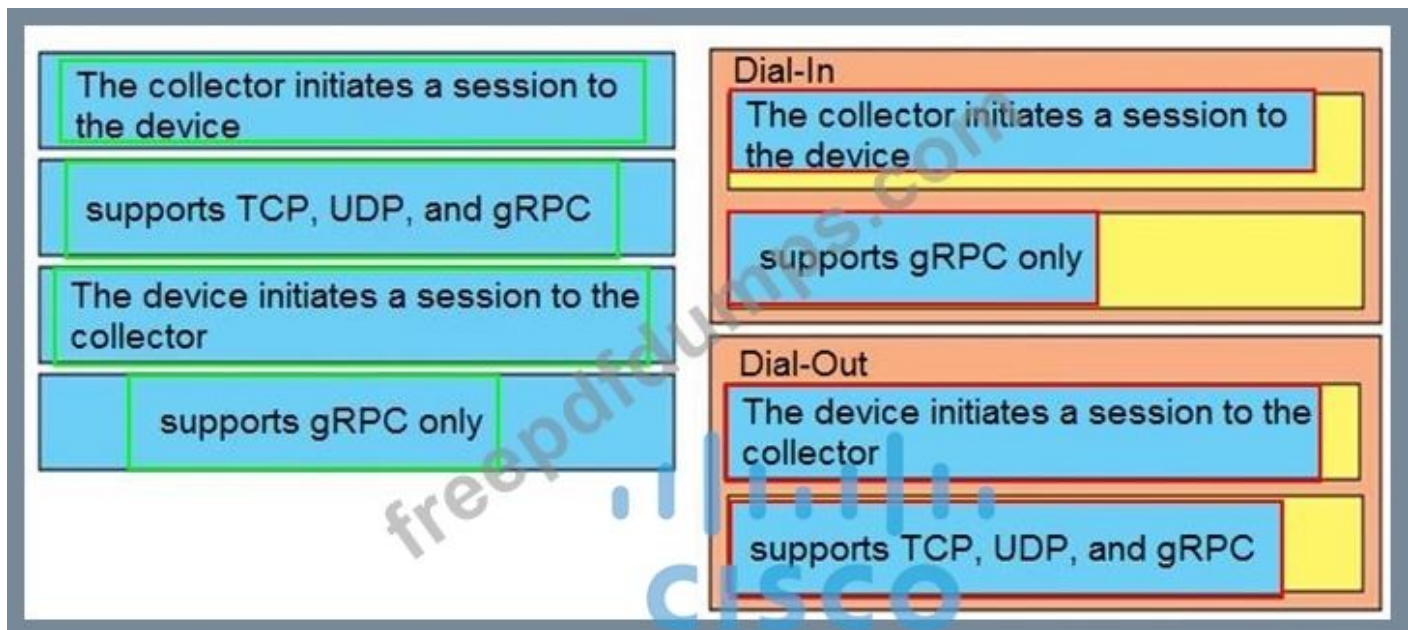
supports gRPC only

Dial-In

Dial-Out

CISCO

Answer:



Reference:

https://www.cisco.com/c/en/us/td/docs/iosxr/asr9000/telemetry/b-telemetry-cg-asr9000-61x/b-telemetry-cgasr9000-61x_chapter_010.html#id_36445

NEW QUESTION: 59

When designing interdomain multicast, which two protocols are deployed to achieve communication between multicast sources and receivers? (Choose two.)

- A. MSDP
- B. MP-BGP
- C. IGMPv2
- D. MLD
- E. BIDIR-PIM

Answer: A,B (LEAVE A REPLY)

NEW QUESTION: 60

Which design element should an engineer consider when multicast is included in a Cisco SD-Access architecture?

- A. PIM SSM must run in the underlay.
- B. Multicast clients reside in the underlay, and the multicast source is outside the fabric or in the overlay.
- C. Rendezvous points must be used in a PIM SSM deployment.
- D. Multicast traffic is transported in the overlay and the EID space for wired and wireless clients.

Answer: D (LEAVE A REPLY)

Multicast traffic is transported in the overlay, in the EID space, for both wired and wireless clients

<https://www.ciscolive.com/c/dam/r/ciscolive/us/docs/2018/pdf/BRKEWN-2020.pdf>

<https://www.cisco.com/c/dam/en/us/td/docs/cloud-systems-management/network-automation-and-management/dna-center/deploy-guide/cisco-dna-center-sd-access-wl-dg.pdf>

NEW QUESTION: 61

A company with multiple service providers wants to speed up BGP convergence time in the event a failure occurs with their primary link. Which approach achieves this goal and does not impact router CPU utilization?

- A. Utilize BFD and keep the default BGP timers
- B. Utilize BFD and tune the multiplier to 50
- C. Decrease the BGP keepalive timer
- D. Lower the BGP hello interval

Answer: A ([LEAVE A REPLY](#))

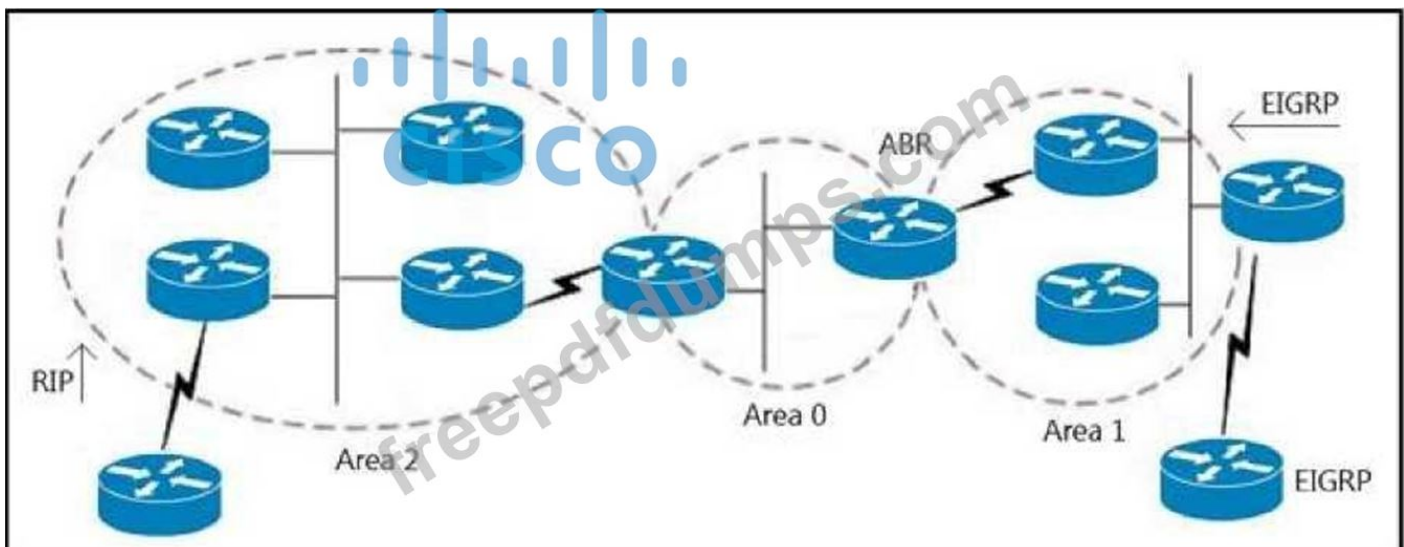
Valid 300-420 Dumps shared by Actual4test.com for Helping Passing 300-420 Exam! Actual4test.com now offer the **newest 300-420 exam dumps**, the Actual4test.com 300-420 exam **questions have been updated** and **answers have been corrected** get the **newest** Actual4test.com 300-420 dumps with Test Engine here:

https://www.actual4test.com/300-420_examcollection.html (341 Q&As Dumps, **30%OFF**)

Special Discount: **Freepdfdumps**)

NEW QUESTION: 62

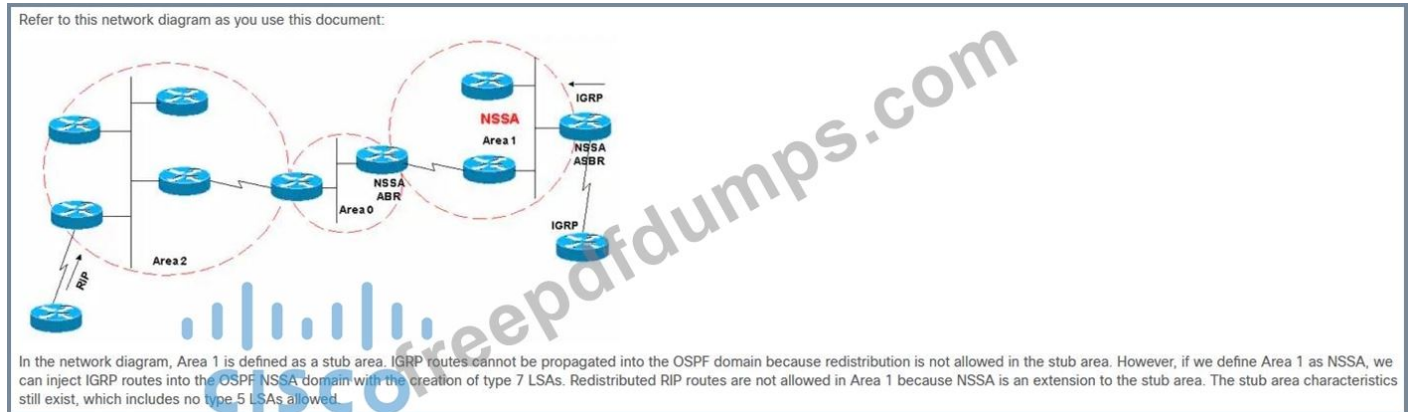
Refer to the exhibit.



Refer to the exhibit. An engineer is designing an OSPF network for a client. Requirements dictate that the routers in Area 1 should receive all routes belonging to the network, including EIGRP, except the ones originated in the RIP domain. Which action should the engineer take?

- A. Make area 1 a NSSA.
- B. Make area 1 a stub.
- C. Make area 1 a standard OSPF area.
- D. Make the area 1 routers part of area 0.

Answer: A (LEAVE A REPLY)



NEW QUESTION: 63

Which two statements describe source trees in a multicast environment? (Choose two.)

- A. Source trees guarantee the minimum amount of network latency for forwarding multicast traffic
- B. Source trees create an optimal path between the source and the receivers
- C. Source trees use a single common root placed at some chosen point in the network
- D. Source trees can introduce latency in packet delivery
- E. Source trees can create suboptimal paths between the source and the receivers

Answer: A,B (LEAVE A REPLY)

https://www.cisco.com/c/en/us/td/docs/ios-xml/ios/ipmulti_pim/configuration/xe-16-5/imc-pim-xe-16-5-book/imc-tech-oview.html

NEW QUESTION: 64

A company uses cloud-based applications for voice and video calls, file sharing, content sharing, and messaging. During business hours, these applications randomly become slow and unresponsive. However, other applications work smoothly with the current applied QoS policies. Which solution must the company choose to resolve the issue?

- A. Identify the applications with NBAR2 and allocate the required bandwidth accordingly.
- B. Identify the port used by each application and apply a minimum bandwidth guarantee.
- C. Identify the applications and reserve the required bandwidth on the perimeter routers.
- D. Identify the application ports, create groupings, and rate-limit the required bandwidth.

Answer: (SHOW ANSWER)

using NBAR to identify application and bandwidth usage, then adjust existing QoS policies would be a more simple option. Of course, B is still ok if the network admin know all traffic and bandwidth consumption by other tools, say netflow. https://www.cisco.com/c/en/us/td/docs/ios-xml/ios/qos_nbar/configuration/15-mt/qos-nbar-15-mt-book/nbar-protocol-discvry.html#GUID-ED1AEDA1-AE69-45C3-A77E-2AF881CA9C36

<https://www.cisco.com/c/en/us/products/ios-nx-os-software/network-based-application-recognition-nbar/index.html>

NEW QUESTION: 65

Refer to the exhibit.



A network engineer must design a multicast solution based on:

- * Many-to-many communications between the users and sources
- * Support of up to 50 multicast sources
- * Users that must register for streams

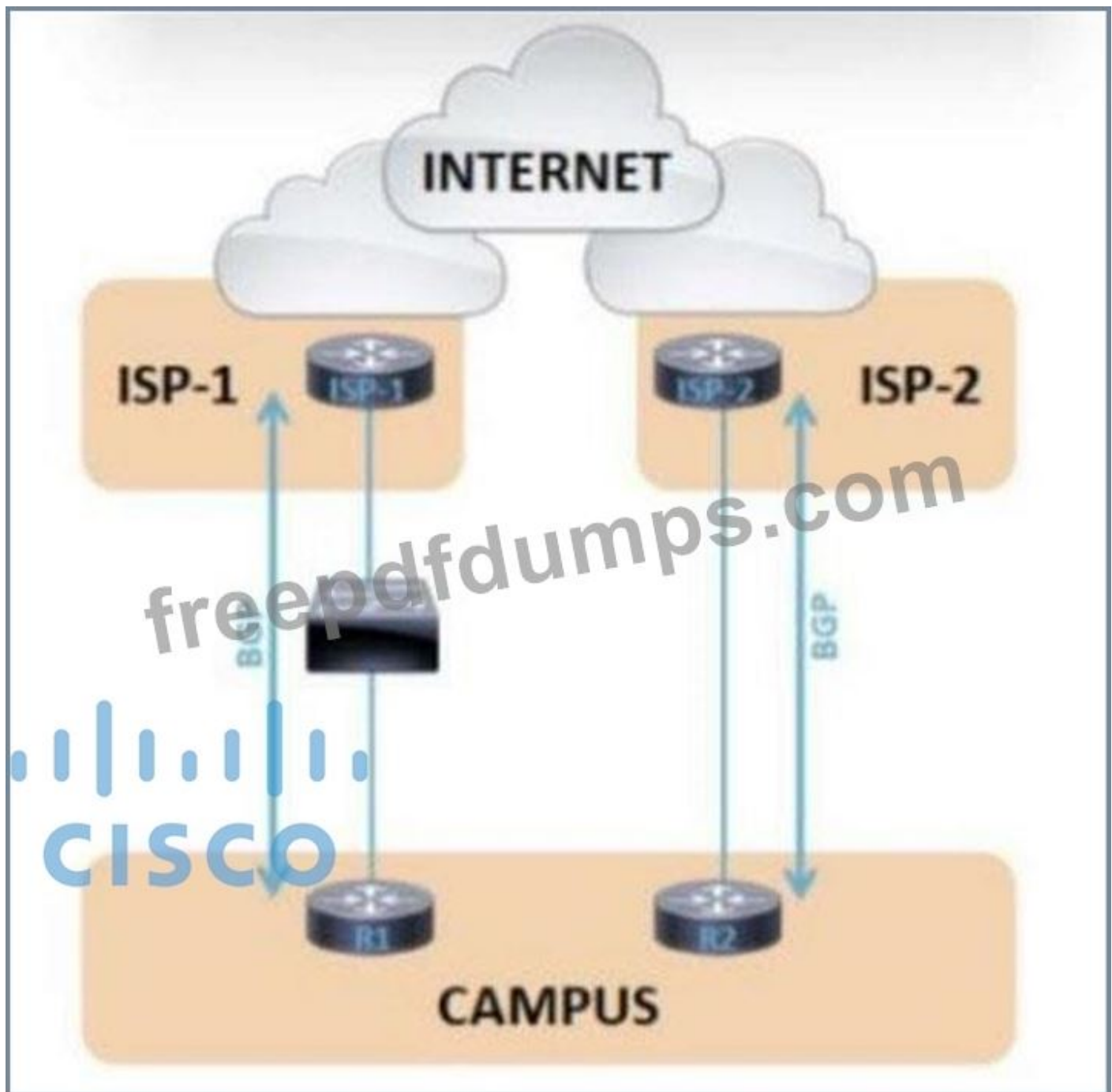
Which multicast solution must the engineer select?

- A. Multicast VPN
- B. Any Source Multicast
- C. Source-Specific Multicast
- D. Bidirectional PIM

Answer: D (LEAVE A REPLY)

NEW QUESTION: 66

Refer to the exhibit.



The failover time of ISP-2 is significantly shorter than ISP-1 when an interface on the ISP router toward the campus network fails. Which solution minimizes the downtime to the sub-second?

- A. Aggressive timers
- B. Next-hop address tracking
- C. Graceful-restart
- D. BFD

Answer: ([SHOW ANSWER](#))

https://www.cisco.com/c/en/us/td/docs/ios/12_2sb/feature/guide/sbbnhop.html

NEW QUESTION: 67

Which function do reverse path forwarding mechanisms perform in a multicast deployment?

- A. They notify the upstream router of multicast traffic.

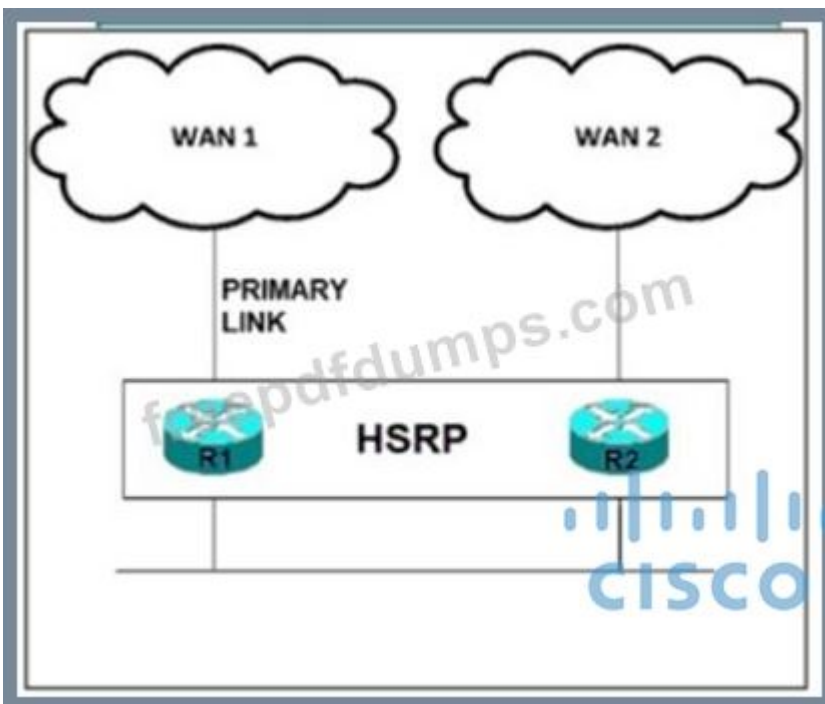
- B. They send PIM prune message toward multicast sources.
- C. They eliminate overlapping multicast addresses
- D. They prevent loops and duplicate packets.

Answer: ([SHOW ANSWER](#))

Reverse path forwarding (RPF) mechanisms are used to prevent loops and duplicate packets in multicast deployments [1]. The RPF check verifies that all multicast traffic received on a router is sourced from the expected direction, ensuring that multicast traffic is not looped back in the network. The RPF check works by comparing the source IP address of a multicast packet with the routing table, and only forwarding it if it matches the expected entry.

NEW QUESTION: 68

Refer to the exhibit.



Refer to the exhibit. An engineer must design an automatic failover solution. The solution should allow HSRP to detect a WAN 1 failure and initiate an automatic failover, making router R2 the active HSRP router. Which two solutions should the engineer choose? (Choose two.)

- A. Implement IP SLA on router R1
- B. Implement PBR on router R1
- C. Implement Enhanced Object Tracking on router R1
- D. use a floating static route
- E. use IP source routing

Answer: A,C ([LEAVE A REPLY](#))

NEW QUESTION: 69

What is a benefit of using VRRPv3 as compared to VRRPv2?

- A. VRRPv3 supports stateful switchover
- B. VRRPv3 supports preemption

C. VRRPv3 supports IPv4 and IPv6

D. VRRPv3 supports authentication

Answer: C (LEAVE A REPLY)

NEW QUESTION: 70

An engineer must design an in-band management solution for a customer with branch sites. The solution must allow remote management of the branch sites using management protocols over an MPLS WAN. Queueing is implemented at the remote sites using these classes:

- Class1 equals voice traffic
- Class2 equals mission-critical traffic
- Class3 equals default traffic

How must the solution prioritize the management traffic over the WAN?

A. Mark the traffic with DSCP CS2 and map into Class2 with a minimum bandwidth assigned by reducing the bandwidth available to Class3

B. Mark the traffic with DSCP EF and map into Class1 with a minimum bandwidth assigned by reducing the bandwidth available to Class2.

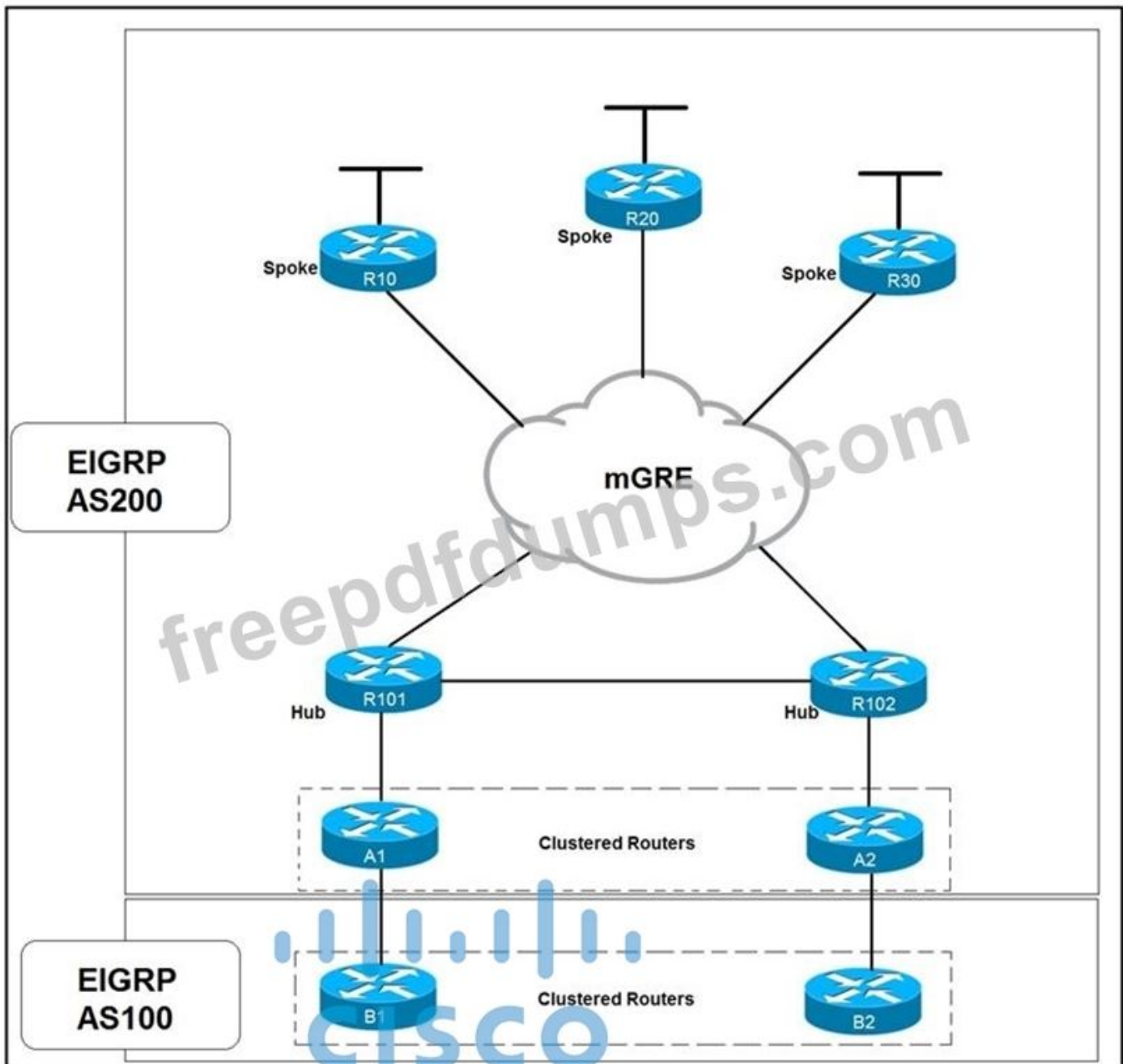
C. Mark the traffic with DSCP CS1 and map into Class2 with a minimum bandwidth assigned by reducing the bandwidth available to Class3.

D. Mark the traffic with DSCP CS6 and map into Class1 with a minimum bandwidth assigned by reducing the bandwidth available to Class2

Answer: A (LEAVE A REPLY)

NEW QUESTION: 71

Refer to the exhibit.



Which solution decreases the EIGRP convergence time?

- A. Increase the hold time value
- B. Increase the dead timer value
- C. Enable stub routing on the spokes
- D. Enable subsecond timers

Answer: C ([LEAVE A REPLY](#))

NEW QUESTION: 72

A company's security policy requires that all connections between sites be encrypted in a manner that does not require maintenance of permanent tunnels. The sites are connected through a private MPLS-based service that uses a dynamically changing key and spoke-to-spoke communication. Which type of transport encryption must be used in this environment?

- A. GETVPN

- B. DMVPN
- C. GRE VPN
- D. standard IPsec VPN

Answer: ([SHOW ANSWER](#))

The type of transport encryption that must be used in this environment is DMVPN (Dynamic Multipoint VPN). DMVPN is a Cisco IOS Software-based solution that creates a secure network foundation and enables secure connectivity between sites by leveraging broadband connections

NEW QUESTION: 73

How is sub-second failure of a transport link detected in a Cisco SD-WAN network?

- A. BGP is used between WAN Edge routers and the vSmart controller.
- B. BFD runs on the IPsec tunnels between WAN Edge routers.
- C. Link state change messages are sent between vSmart controllers.
- D. Hellos are sent between the WAN Edge routers and the vSmart controller.

Answer: B ([LEAVE A REPLY](#))

NEW QUESTION: 74

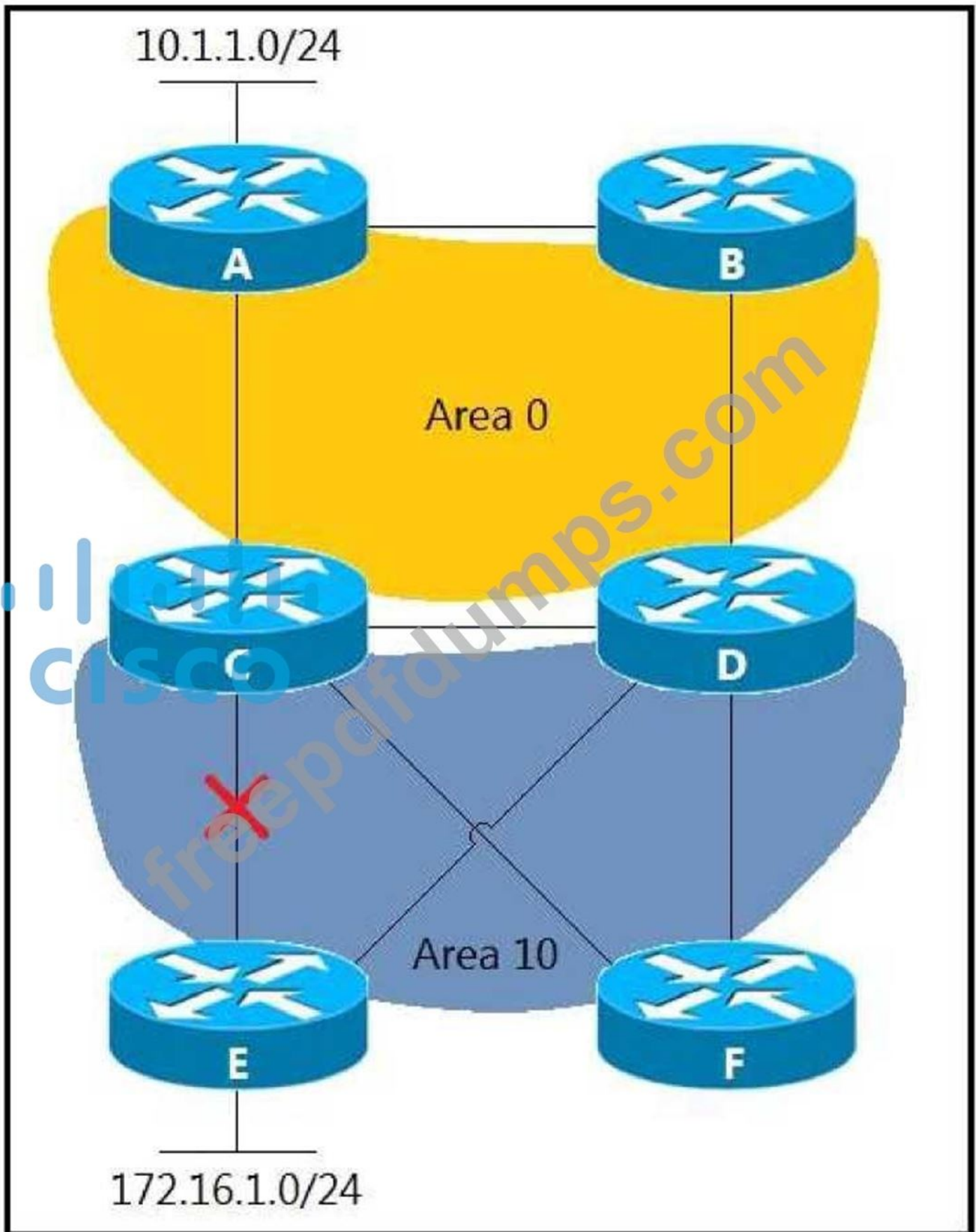
An engineer must propose a QoS architecture model that allows an application to inform the network of its traffic profile and to request a particular type of service to support its bandwidth and delay requirements. The application requires consistent and dedicated bandwidth end to end. Which QoS architecture model meets these requirements?

- A. IntServ
- B. DiffServ
- C. WRED
- D. LLQ

Answer: A ([LEAVE A REPLY](#))

NEW QUESTION: 75

Refer to the exhibit.



Refer to the exhibit. Area 10 is a regular OSPF area and networks 10.1.1.0/24 and 172.16.1.0/24 are internal. Which design provides optimal routing between both networks when the link between routers C and E fails?

A. Create an OSPF virtual link between routers E and F.

- B. Move the link between routers C and D to area 10.
- C. Create a tunnel between routers E and F in area 10.
- D. Make area 10 a not-so-stubby area.

Answer: ([SHOW ANSWER](#))

NEW QUESTION: 76

An architect must design an IPv6 migration solution for a corporation with remote offices to support:

- * The customer has IPv4 peering with their service provider.
- * IPv6 users need access to IPv4 and IPv6 resources.
- * Existing content providers will migrate to IPv6 in the next two years.
- * Users will be migrated in a phase-by-phase approach.

Which migration solution must the architect choose?

- A. NAT64
- B. tunneling
- C. NAT46
- D. dual-stack

Answer: D ([LEAVE A REPLY](#))

Valid 300-420 Dumps shared by Actual4test.com for Helping Passing 300-420 Exam!
Actual4test.com now offer the **newest 300-420 exam dumps**, the Actual4test.com 300-420 exam **questions have been updated** and **answers have been corrected** get the **newest** Actual4test.com 300-420 dumps with Test Engine here:

https://www.actual4test.com/300-420_examcollection.html (341 Q&As Dumps, **30%OFF**)

Special Discount: **Freepdfdumps**)

NEW QUESTION: 77

Drag and drop the steps WAN Edge performs when on-boarded into the Cisco SD-WAN overlay from the left into the order they are completed on the right.

Answer Area	
WAN Edge authenticates to vBond.	Step 1
WAN Edge establishes an OMP session to vSmart.	Step 2
WAN Edge establishes a secure connection to vManage and vSmart.	Step 3
WAN Edge establishes IPsec connections to other TLOC locations.	Step 4

Answer:

Answer Area	
WAN Edge authenticates to vBond.	WAN Edge authenticates to vBond.
WAN Edge establishes an OMP session to vSmart.	WAN Edge establishes a secure connection to vManage and vSmart.
WAN Edge establishes a secure connection to vManage and vSmart.	WAN Edge establishes an OMP session to vSmart.
WAN Edge establishes IPsec connections to other TLOC locations.	WAN Edge establishes IPsec connections to other TLOC locations.

NEW QUESTION: 78

Which design consideration should be observed when EIGRP is configured on Data Center switches?

- A. Perform manual summarization on all Layer 3 interfaces to minimize the size of the routing table.
- B. Prevent unnecessary EIGRP neighborships from forming across switch virtual interfaces.
- C. Lower EIGRP hello and hold timers to their minimum settings to ensure rapid route reconvergence.
- D. Configure multiple EIGRP autonomous systems to segment Data Center services and applications.

Answer: ([SHOW ANSWER](#))

NEW QUESTION: 79

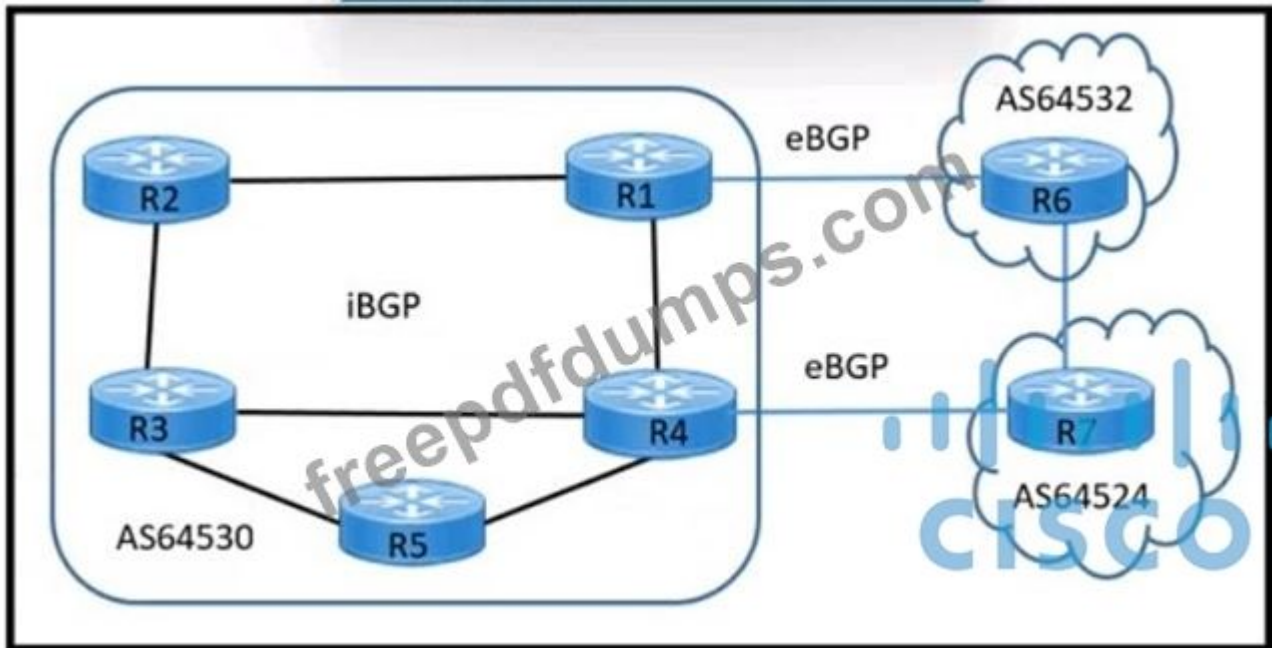
What is the purpose of a TLOC extension in a Cisco SD-WAN network fabric?

- A. to expand the number of colors that are potentially applied to a network transport interface
- B. to facilitate WAN Edge router redundancy within a site
- C. to aggregate multiple physical interfaces into a single logical Interface
- D. to identify the physical interface where a WAN Edge router connects to the WAN transport network

Answer: ([SHOW ANSWER](#))

NEW QUESTION: 80

Refer to the exhibit.



Refer to the exhibit. A network engineer must design a BGP solution based on:

The route reflector must have one or more direct physical connections to the core routers (R3 and R4).

The route reflector must have full redundancy and avoid a single point of failure.

R2 to R1 link utilization is 90%. and the remaining links are less than 50% utilized.

Which two solutions must the design include? (Choose two.)

- A. Configure R5 to be a client of R3 and R4.
- B. Configure R3 to be a client of R2 and R4.
- C. Configure R1 to be a client of R2 and R4.
- D. Configure R2 to be a client of R1 and R4.
- E. Configure R4 to be a client of R1 and R3.

Answer: ([SHOW ANSWER](#))

NEW QUESTION: 81

Which topology within a network underlay eliminates the need for first hop redundancy protocols while improving fault tolerance, increasing resiliency, and simplifying the network?

- A. virtualized topology
- B. logical fabric topology

- C. routed access topology
- D. Layer 2 topology

Answer: B (LEAVE A REPLY)

NEW QUESTION: 82

Which method will filter routes between EIGRP neighbors within the same autonomous system?

- A. distribute-list
- B. route tagging
- C. policy-based routing
- D. leak-map

Answer: A (LEAVE A REPLY)

NEW QUESTION: 83

Which feature minimizes HOC connections and reduces strain on the vSmart controller in an SD-WAN architecture?

- A. affinity
- B. color
- C. control-plane direction
- D. control-connections

Answer: A (LEAVE A REPLY)

NEW QUESTION: 84

Drag and drop the elements from the left onto the functions they perform in the Cisco SD-WAN architecture on the right.

vManage	performs the initial authentication of WAN Edge devices
vSmart controller	provides a GUI interface to monitor, configure, and maintain the SD-WAN devices
vBond orchestrator	responsible for the control plane

Answer:

vManage	vBond orchestrator	performs the initial authentication of WAN Edge devices
vSmart controller	vManage	provides a GUI interface to monitor, configure, and maintain the SD-WAN devices
vBond orchestrator	vSmart controller	responsible for the control plane

NEW QUESTION: 85

Which design consideration must be made when using IPv6 overlay tunnels?

- A. Overlay tunnels that connect isolated IPv6 networks can be considered a final IPv6 network architecture.
- B. Overlay tunnels should only be considered as a transition technique toward a permanent solution.
- C. Overlay tunnels can be configured only between border devices and require only the IPv6 protocol stack.
- D. Overlay tunneling encapsulates IPv4 packets in IPv6 packets for delivery across an IPv6 infrastructure.

Answer: B ([LEAVE A REPLY](#))

<https://www.cisco.com/c/en/us/td/docs/ios-xml/ios/interface/configuration/xr-3s/ir-xr-3s-book/ip6-ip4-gre-tunls-xr.pdf>

"The use of overlay tunnels should be considered as a transition technique toward a network that supports both the IPv4 and IPv6 protocol stacks or just the IPv6 protocol stack."

NEW QUESTION: 86

Which type of rendezvous point deployment is standards-based and supports dynamic RP discovery?

- A. static RP
- B. Anycast-RP
- C. bootstrap router
- D. Auto-RP

Answer: C ([LEAVE A REPLY](#))

NEW QUESTION: 87

Which two functions does the control plane node provide in a Cisco SD-Access architecture? (Choose two.)

- A. policy mapping
- B. endpoint registration
- C. map server
- D. host tracking database
- E. LISP proxy ETR

Answer: C,D ([LEAVE A REPLY](#))

NEW QUESTION: 88

What are two benefits of designing an SD-WAN network fabric with direct Internet access implemented at every site? (Choose two.)

- A. It alleviates network traffic on MPLS circuits.
- B. It increases the total available bandwidth on Internet circuits.
- C. It decreases latency on Internet circuits.

- D. It increases the speed of delivery of site deployments through zero-touch provisioning.
- E. It decreases latency to applications hosted by public cloud service provider.

Answer: A,E ([LEAVE A REPLY](#))

NEW QUESTION: 89

Which component of Cisco SD-Access integrates with Cisco DNA Center to perform policy segmentation and enforcement through the use of security group access control lists and security group tags?

- A. Cisco Application Policy Infrastructure Controller Enterprise Module
- B. TrustSec
- C. Cisco Identity Services Engine
- D. Cisco Network Data Platform

Answer: B ([LEAVE A REPLY](#))

NEW QUESTION: 90

An enterprise customer has these requirements:

- * end-to-end QoS for the business-critical applications and VoIP services based on CoS marking.
- * flexibility to offer services such as IPv6 and multicast without any reliance on the service provider.
- * support for full-mesh connectivity at Layer 2.

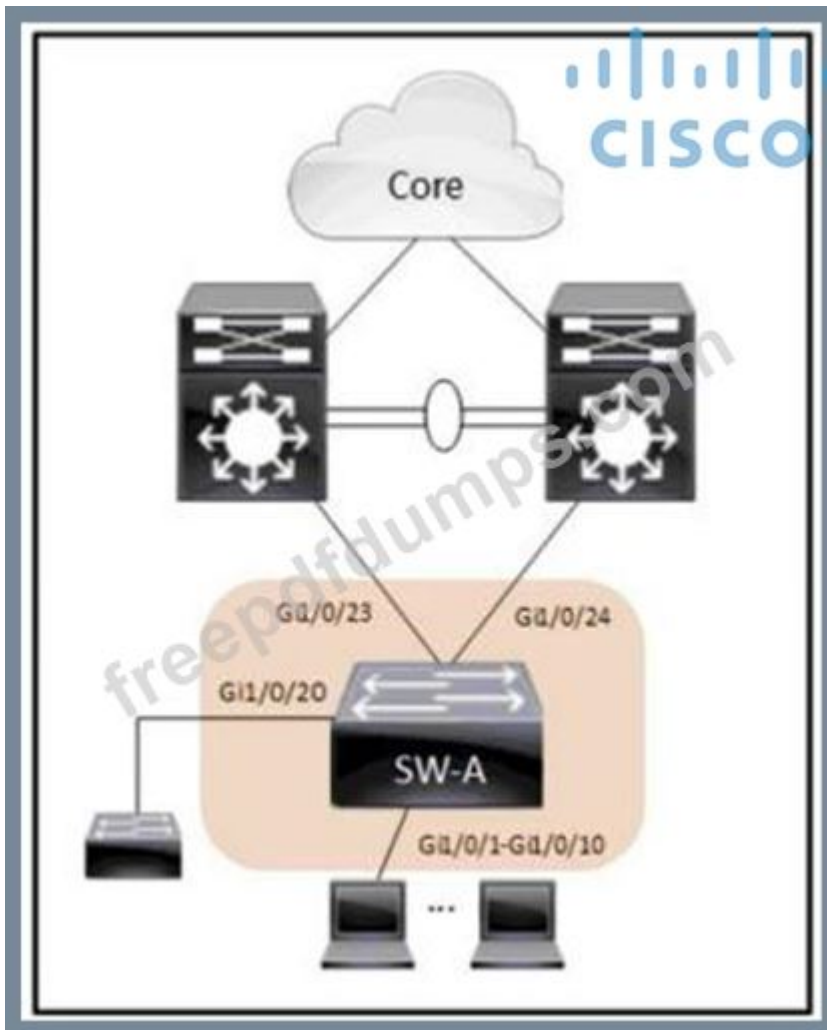
Which WAN connectivity option meets these requirements?

- A. VPWS
- B. MPLS VPN
- C. VPLS
- D. DMVPN

Answer: C ([LEAVE A REPLY](#))

NEW QUESTION: 91

Refer to the exhibit.



Refer to the exhibit. An architect reviews the low-level design of a company's enterprise network and advises optimizing the STP convergence time. Which functionality must be to Gi1/0/1-10 to follow the architect's recommendation?

- A. root guard
- B. BPDU guard
- C. PortFast
- D. UplinkFast

Answer: ([SHOW ANSWER](#))

Valid 300-420 Dumps shared by Actual4test.com for Helping Passing 300-420 Exam!
 Actual4test.com now offer the **newest 300-420 exam dumps**, the Actual4test.com 300-420 exam **questions have been updated** and **answers have been corrected** get the **newest** Actual4test.com 300-420 dumps with Test Engine here:

https://www.actual4test.com/300-420_examcollection.html (341 Q&As Dumps, **30%OFF**)

Special Discount: **Freepdfdumps**)

NEW QUESTION: 92

Drag and drop the elements from the left onto the protocols where they are used on the right.

SSH/TLS	NETCONF
HTTP/HTTPS	
noclient	
requests library	RESTCONF
RPC messages	
HTTP methods	

Answer:

SSH/TLS	NETCONF
HTTP/HTTPS	SSH/TLS
noclient	noclient
requests library	RPC messages
RPC messages	RESTCONF
HTTP methods	HTTP/HTTPS
	requests library
	HTTP methods

NEW QUESTION: 93

A network engineer must design a multicast solution to prevent the spoofing of multicast streams and ensure efficient bandwidth utilization. The network will be merged with another multicast domain in the future, and the merge must require minimum effort. Which two solutions meet the customer requirements? (Choose two.)

- A. PIM-SSM
- B. IGMPv3
- C. IGMPv2
- D. PIM-SM

E. MSDP

Answer: D,E (LEAVE A REPLY)

https://www.cisco.com/c/en/us/td/docs/ios-xml/ios/ipmulti_pim/configuration/xr-16/imc-pim-xr-16-book/imc-msdp-im-pim-sim.html#GUID-4B201DB3-2C27-4F98-977A-A1AE9DC39C21 MSDP is a mechanism to connect multiple PIM-SM domains. The purpose of MSDP is to discover multicast sources in other PIM domains. The main advantage of MSDP is that it reduces the complexity of interconnecting multiple PIM-SM domains by allowing PIM-SM domains to use an interdomain source tree (rather than a common shared tree).

NEW QUESTION: 94

Drag and drop the description from the left onto the corresponding WAN connectivity types and categories on the right.

It supports end-to-end network segmentation.

The WAN is a flat network with no network segmentation.

Application data is encrypted end-to-end.

It is hard to detect sniffing incidents.

Control traffic is fully encrypted and independent from the service provider network.

CE to PE routing is controlled by the service provider.

Cisco SD-WAN

data security

network segmentation

routing exposure

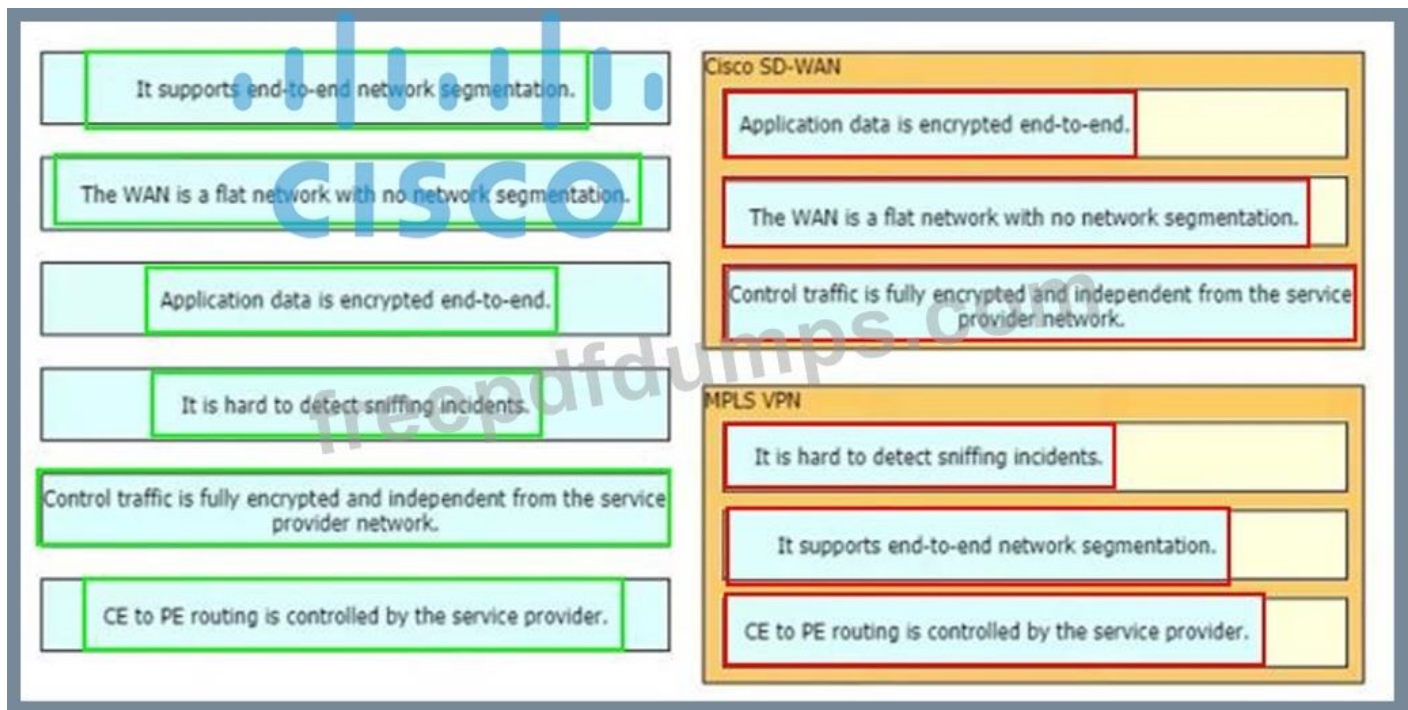
MPLS VPN

data security

network segmentation

routing exposure

Answer:



NEW QUESTION: 95

Which node performs the LISP Map-Server and Map-Resolver functions in the Cisco SD-Access network architecture?

- A. fabric edge node
- B. intermediate node
- C. control plane node
- D. border node

Answer: C ([LEAVE A REPLY](#))

NEW QUESTION: 96

A company is using OSPF between its HQ location and a branch office. HQ is assigned area 0 and the branch office is assigned area 1. The company purchases a second branch office, but due to circuit delays to HQ, it decides to connect the new branch office to the existing branch office as a temporary measure. The new branch office is assigned area 2. Which OSPF configuration enables all three locations to exchange routes?

- A. The existing branch office must be configured as a stub area
- B. A virtual link must be configured between the new branch office and HQ
- C. The new branch office must be configured as a stub area
- D. A sham link must be configured between the new branch office and HQ

Answer: B ([LEAVE A REPLY](#))

NEW QUESTION: 97

What is the role of a control-plane node in a Cisco SD-Access architecture?

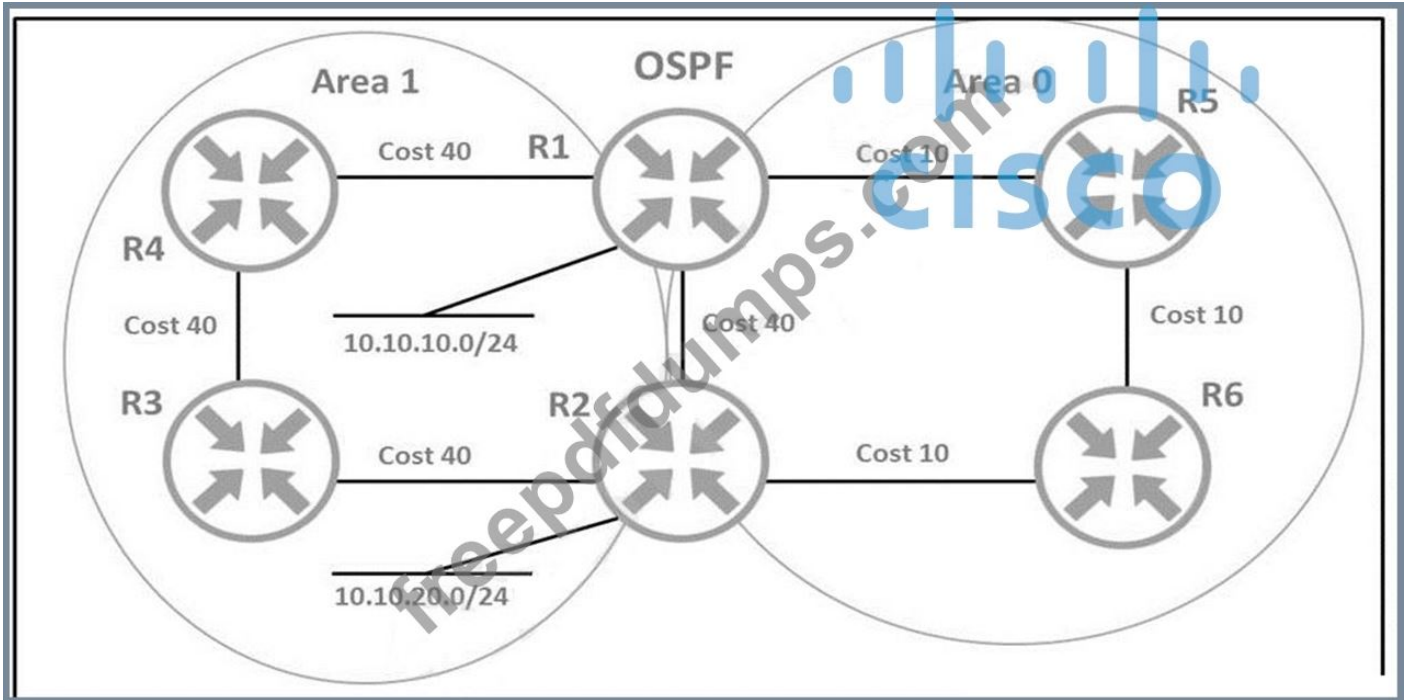
- A. fabric device that connects wired endpoints to the SD-Access fabric
- B. fabric device that connects APs and wireless endpoints to the SD-Access fabric

- C. map system that manages External Layer 3 networks
- D. map system that manages endpoint to device relationships

Answer: ([SHOW ANSWER](#))

NEW QUESTION: 98

Refer to the exhibit.



An architect must design a solution that uses the direct link between R1 and R2 for traffic from 10.10.10.0/24 toward network 10.10.20.0/24. Which solution should the architect include in the design?

- A. Configure the link to provide multiarea adjacency.
- B. Configure the OSPF cost of the link to a value lower than 30.
- C. Lower the Administrative Distance for OSPF area 0.
- D. Place the link into area 2 and install a new link between R1 and R2 in area 0.

Answer: B ([LEAVE A REPLY](#))

NEW QUESTION: 99

Refer to the exhibit.

```

bandwidth percent 26
random-detect dscp-based
class BULK
bandwidth percent 5
random-detect dscp-based
class SCAVENGER
bandwidth percent 1
class class-default
bandwidth percent 24
random-detect
|
class-map match-all BULK
match ip dscp af11 af12
class-map match-all VIDEO
match ip dscp af41 af42
class-map match-any ROUTING
match ip dscp cs6
class-map match-all MISSION-CRITICAL
match ip dscp af21 af22
class-map match-any SIGNALLING
match ip dscp cs3
match ip dscp af31
class-map match-all VOICE
match ip dscp ef
class-map match-all SCAVENGER
match ip dscp cs1
|
interface GigabitEthernet0/2
description Link_to_DC
service-policy output WAN-DC-LINK

```



Refer to the exhibit. A customer needs to apply QoS to the network management traffic passing through the GigabitEthernet0/2 interface. All eight queuing classes are in use, so the new requirement must be integrated into the existing policy. Which solution must the customer choose?

- A. Mark the traffic to DSCP CS4 and assign it to the SIGNALLING class. Then, prioritize traffic within the class.
- B. Mark the traffic to DSCP CS6 and assign it to the ROUTING class Then, prioritize traffic within the class.
- C. Mark the traffic to DSCP CS2 and assign it to the ROUTING class Then, baseline existing queue sizes to determine if additional bandwidth can be provisioned to the ROUTING class
- D. Mark traffic to DSCP CS5 and assign it to the SIGNALLING class. Then, baseline existing queue sizes to determine if additional bandwidth can be provisioned to the SIGNALLING class.

Answer: (SHOW ANSWER)

NEW QUESTION: 100

Which consideration must be made when designing a Cisco SD-Access fabric underlay?

- A. Subnets must be reduced to decrease latency.
- B. Up to six control planes are supported.
- C. The default MTU should be increased.
- D. A unified policy must be used.

Answer: C (LEAVE A REPLY)

Look under "Underlay Network Design". Its the second bullet point.

https://www.cisco.com/c/en/us/td/docs/solutions/CVD/Campus/cisco-sda-design-guide.html#Underlay_Network_Design

NEW QUESTION: 101

An engineer must design a large Layer 2 domain that contains hundreds of switches and VLANs.

The engineer's primary goals are to:

- * Efficiently utilize the bandwidth of all links
- * Avoid Layer 2 loops
- * Cause minimal impact on switch CPU and memory

Which technology should the engineer include in the design?

- A. MST
- B. Rapid PVST+
- C. PVST+
- D. RSTP

Answer: ([SHOW ANSWER](#))

NEW QUESTION: 102

A company needs to increase access port capacity on one floor of a building. They want to leverage the existing catalyst access switch. There is no problem with uplink bandwidth capacity. However, no additional uplinks can be added because no ports are available on the distribution switches. Which solution must the company choose to provide additional access ports?

- A. VDC
- B. Etherchannel
- C. VSS
- D. Stackwise

Answer: D ([LEAVE A REPLY](#))

NEW QUESTION: 103

A global organization with several branches hired a network architect to design an overlay VPN solution. The branches communicate with each other frequently. The customer expects to add more branches in the future. To meet the customer's security requirements, the architect plans to provide traffic protection using dynamic IPsec tunnels. Which solution should the architect choose?

- A. DMVPN
- B. EasyVPN
- C. GETVPN
- D. L2TP

Answer: ([SHOW ANSWER](#))

exam **questions have been updated** and **answers have been corrected** get the **newest**

Actual4test.com 300-420 dumps with Test Engine here:

https://www.actual4test.com/300-420_examcollection.html (**341** Q&As Dumps, **30%OFF**

Special Discount: Freepdfdumps)