

## Citrix.1Y0-403.v2022-02-03.q106

<b>Exam Code:</b>	1Y0-403
<b>Exam Name:</b>	Citrix Virtual Apps and Desktops 7 Assessment, Design and Advanced Configurations
<b>Certification Provider:</b>	Citrix
<b>Free Question Number:</b>	106
<b>Version:</b>	v2022-02-03
<b># of views:</b>	2801
<b># of Questions views:</b>	1060
<a href="https://www.freepdfdumps.com/Citrix.1Y0-403.v2022-02-03.q106.html">https://www.freepdfdumps.com/Citrix.1Y0-403.v2022-02-03.q106.html</a>	

### NEW QUESTION: 1

Scenario: A Citrix Architect is configuring a multi-location profile strategy as part of a large Citrix Virtual Apps and Desktops solution. The architect needs to implement a single policy that sets the profile path for all users and distributes the user profiles between 3 shares and 9 file servers.

- New York users: Server: NYC-FS.company.lan Share: NYC-Profiles\$
- Miami users: Server: MIA-FS.company.lan Share: MIA-Profiles\$
- San Francisco users: Server: SFO-FS.company.lan Share: SFO-Profiles\$

Which value constitutes a valid path for use with a Citrix Profile Management policy?

- A. \\#DFS-ROOT#.company.lan\%HomeLocation%\$\#sAMAccountName#\%ProfileVer%\
- B. \\%DataCenter%-FS.company.lan\%UserHome%-Profiles\$\#sAMAccountName#\%ProfileVer%\
- C. \\%DFS-ROOT%.company.lan\%HomeShare%\$\#sAMAccountName#\%ProfileVer%\
- D. \\#DataCenter#-FS.company.lan\#DataCenter#-Profiles\$\#sAMAccountName#\%ProfileVer%\

**Answer: D (LEAVE A REPLY)**

### NEW QUESTION: 2

Scenario: A Citrix Architect is designing a new Citrix Virtual Apps and Desktops environment. The architect has identified the requirements, based on the assessment and early stages of the design.

Click the Exhibit button to view the requirements.

Design Topic	Design Decision
Deployment type	Public Cloud – Microsoft Azure
Licensing	Citrix Virtual Desktops Platinum Edition; User/Device Licenses
Maximum Concurrent Users	1,000
Images	<ul style="list-style-type: none"> <li>• Windows Server 2016 – 1 <ul style="list-style-type: none"> <li>○ FlexCast Model: Published Apps</li> </ul> </li> <li>• Windows Server 2016 – 2 <ul style="list-style-type: none"> <li>○ FlexCast Model: Published Desktops</li> </ul> </li> <li>• Windows 10 <ul style="list-style-type: none"> <li>○ FlexCast Model: Hosted VDI (Static and Persistent)</li> </ul> </li> </ul>
User Applications	<ul style="list-style-type: none"> <li>• Microsoft Office 2016: All Users</li> <li>• Adobe Acrobat: All Users</li> <li>• Internal Sales Application: Sales Group (500 Users)</li> <li>• Mozilla Firefox: Developers Group (200 Users)</li> <li>• Microsoft Office 2010: Accounting Group (50 Users)</li> <li>• Human Resources (HR) App: HR Managers Only (15 Users)</li> </ul>

Additionally, the IT team identified 2 provisioning strategy requirements:

- \* Should be compatible with planned design decisions
- \* Should minimize required time to perform image and application updates Which provisioning method should the architect use for the environment, based on the design decisions and requirements shown in the exhibit?

- A. Citrix Provisioning
- B. Machine Creation Services (MCS) with App Layering
- C. Machine Creation Services (MCS)
- D. Manual Provisioning
- E. Citrix Provisioning with App Layering
- F. Manual Provisioning with App Layering

**Answer: F (LEAVE A REPLY)**

### NEW QUESTION: 3

Scenario: A Citrix Architect designed an environment where policies will be deployed using Workspace Environment Management (WEM). The architect decided to install two WEM Infrastructure Services servers in order to meet the expected load in the environment.

What should the architect do to ensure that both servers can be utilized in the environment?

- A. Configure two virtual (VIPs) on a NetScaler appliance: one for the primary server, and one for the backup server.
- B. Configure a load-balancing virtual IP (VIP) on a NetScaler appliance so that both servers can be actively receiving communications.
- C. Enter both server names in the Agent Host Configuration; the first server listed will be contracted first; the second server will be in a standby capacity until needed.
- D. Enter both server names in the Agent Host Configurations so that both servers will be actively contacted.

**Answer: B (LEAVE A REPLY)**

<https://wilkyit.com/2017/02/28/load-balance-citrix-workspace-environment-manager-wem-with-netscaler-11-x/>

#### **NEW QUESTION: 4**

Scenario: A Citrix Architect is designing a new Citrix Virtual Apps and Desktops environment. Currently, the environment is configured with 2 locations with identical Citrix Virtual Desktops Sites. Each Site has 2 Delivery Controllers, 2 StoreFront servers, and 1 Citrix ADC high-availability pair. The same applications have been published from both Sites for all users. Two zones (Zone A and Zone B) are configured in each Site with 1 Delivery Controller in each zone. The Microsoft Exchange server is only accessible from Virtual Delivery Agent (VDA) machines in Zone A in each Site.

Six access requirements have been identified:

- \* Users should have a single URL when accessing resources from different Sites.
- \* Users should always connect to the data center closest to their location.
- \* Applications added to Favorites within the Citrix Workspace app should be retained when accessed from different Sites.
- \* Launched applications and desktops should always connect through a local Citrix ADC.
- \* No duplication of applications published from different Sites.
- \* Microsoft Outlook should always launch in Zone A.

What should the architect recommend to ensure that Microsoft Outlook always launches from Zone A for every user?

- A. Configure zone preference based on user location.
- B. Configure Zone A as the application Home Zone for Microsoft Outlook.
- C. Move a Delivery Controller from Zone B to Zone A.
- D. Designate Zone A as the Home Zone for all users.

**Answer: B (LEAVE A REPLY)**

#### **NEW QUESTION: 5**

A Citrix Architect is designing the Access Layer for a company that supports active-active mode for Citrix Gateway, as well as an on-premises, two-factor authentication solution.

Which feature supports this requirement?

- A. Citrix ADC Standard edition or higher
- B. High-availability pair
- C. Citrix Gateway Service
- D. Citrix ADC Cluster

**Answer: A (LEAVE A REPLY)**

#### **NEW QUESTION: 6**

Scenario: A Citrix Architect is designing a new Citrix Virtual Apps and Desktops environment. Two Control Layer security requirements have been identified:

- \* Secure XML traffic between StoreFront and the Delivery Controller using SSL.

\* Secure Ticket Authority (STA) traffic must be protected with SSL.

Which three tools can the architect use to ensure that all security requirements are met? (Choose three.)

- A. Citrix Studio console
- B. Citrix Director console
- C. Internet Information Services (IIS)
- D. Citrix StoreFront console
- E. 'NETSH' command line

**Answer:** ([SHOW ANSWER](#))

### **NEW QUESTION: 7**

Scenario: Eight hundred users from a newly acquired company based in another continent will immediately require access to several Citrix applications being added to a zone within the Citrix Virtual Apps Site.

Approximately 40 Citrix servers are being deployed in that zone.

Management informs a Citrix Architect that the new company has an unused Citrix ADC MPX 24xxx series appliance that should be used to address Citrix Gateway requirements. The design must support updating the Citrix ADC firmware without user interruption.

What should the architect do to ensure that the Citrix ADC MPX 24000-series appliance addresses these requirements?

- A. Deploy Citrix Gateway into 2 admin partitions.
- B. Install a Premium license on the appliance and deploy 2 extended access control lists (ACLs)
- C. Install a Premium license on the appliance and deploy Citrix Gateway instances in a cluster.
- D. Convert to Citrix SDX, install an add-on pack license on the appliance, and deploy Citrix Gateway VPX instances in a cluster.

**Answer:** D ([LEAVE A REPLY](#))

### **NEW QUESTION: 8**

Scenario: A Citrix Architect is designing a Citrix Virtual Desktops environment. The Engineer Group requires NVIDIA hardware with shared virtualized GPUs due to its use of graphical applications. Management wants to use 4 components within the Citrix Virtual Desktops environment to meet these requirements:

- \* NVIDIA GRID Tesla P40 GPUs
- \* Microsoft Hyper-V Server 2012 R2
- \* Windows 10 virtual machines (VMs)
- \* Citrix Virtual Desktops 7

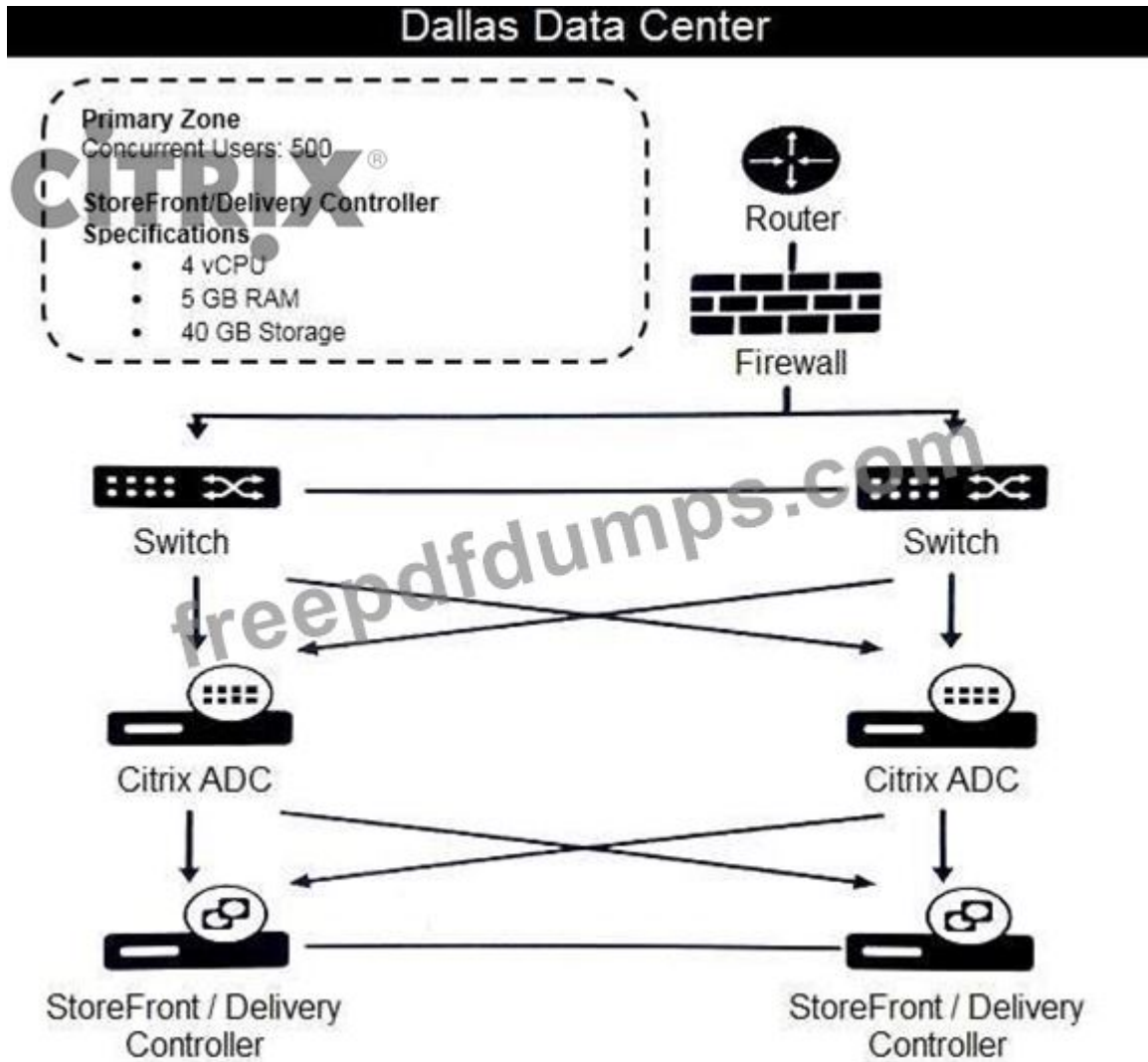
Which component must the architect change to implement this use case?

- A. Citrix Virtual Desktops 7
- B. Microsoft Hyper-V Server 2012 R2
- C. Windows 10 virtual machines
- D. NVIDIA GRID Tesla P40 GPUs

Answer: A ([LEAVE A REPLY](#))

**NEW QUESTION: 9**

Scenario: A Citrix Architect is designing a single-Site Citrix Virtual Apps and Desktops production environment. Through earlier design discussions, the architect has determined the environment details listed in the exhibit Click the Exhibit button to view the details.



What should the architect change in the current environment to align with Citrix leading practices?

- A. The existing Delivery Controller and StoreFront servers should be allocated an additional 2 GB of RAM each.
- B. A Delivery Controller should be removed from the Site.
- C. A Delivery Controller should be added to the Site.
- D. The Delivery Controller and StoreFront roles should NOT be co-located on the same server.
- E. The existing Delivery Controller and StoreFront servers should be allocated two additional CPUs each.

Answer: A ([LEAVE A REPLY](#))

Explanation

**NEW QUESTION: 10**

Scenario: A Citrix Architect completed an assessment of an existing environment. The architect learned that one of the business requirements dictate that automatic update functionality is disabled, and that deployment is exclusively done by electronic software distribution (ESD). Which parameter is required to configure the Citrix Workspace Updates settings from the command line interface, when installing Citrix Workspace app for Windows?


- A. /AutoUpdateStream=current
- B. /AutoUpdateStream=disabled
- C. /AutoUpdateCheck=auto
- D. /AutoUpdateCheck=disabled

**Answer:** ([SHOW ANSWER](#))

### NEW QUESTION: 11

Scenario: A Citrix Architect is designing a new Citrix Virtual Apps and Desktops environment. The customer previously installed all applications locally on managed laptops and desktops, but is willing to evaluate other application delivery methods as part of the new deployment. The environment will be standardized on Windows 10 for the Virtual Delivery Agent (VDA) machines. As part of an application analysis performed earlier in the project, the information in the exhibit was collected regarding 1 of the required applications.

Click the Exhibit button to view the information.

Category	Detail
Application Name	Visual Studio
Description	The application is used to develop computer programs, websites, web apps, web services, and mobile apps.
Usage	The application will be used by developers working in the organization.
OS Compatibility	The application is compatible with the target operating systems.
Special Considerations	The users are internal and external contractors, third-party collaborators, and other provisional team members who do NOT require offline access to the application.  The application contains a number of Windows services.

The customer's security policies mandate that all development software must run within the corporate data center, but should appear to the user as if it is running locally on the virtual machine (VM).

How should the architect recommend deploying the application?

- A. Install it in an Application Layer using Citrix App Layering, then present it to users as an Elastic Layer during a virtual a virtual desktop session.
- B. Use Desktop OS machines to deliver VM hosted applications.
- C. Install it directly on the endpoint devices, and include it in a virtual desktop session using the Local App Access feature.
- D. Push it to users with a Workspace Environment Management (WEM) action option.
- E. Stream it to a VDA machine using Microsoft App-V, and access it through a virtual desktop session.

**Answer:** E ([LEAVE A REPLY](#))

### NEW QUESTION: 12

Scenario: A Citrix Architect is designing a new Citrix Virtual Apps and Desktops environment. Based on some initial discussions about the business goals and objectives of the company, the architect collected the information shown in the exhibit.

Click the Exhibit button to view the information.

Category	Detail
Application Name	HealthApp
Description	The application is an electronic medical recording (EMR) solution for large hospitals and healthcare systems. HealthApp has its own authentication engine to control access to sensitive data.
Usage	The application will be used by all employees in the organization.
OS Compatibility	The application is compatible with the Virtual Desktop Access (VDA) operating systems.
Special Considerations	All users will access HealthApp from non-domain, joined kiosk devices. Session reconnection and session roaming capabilities are NOT required.

What should the architect recommend to meet customer requirements?

- A. Have users connect to an authenticated store through the Citrix Virtual Apps Services URL. <https://www.smali.net/creating-desktop-appliance-site-on-storefront-by-richard-egenas/>
- B. Have users connect to an unauthenticated store through the Citrix Workspace app for Web sites.
- C. Have users connect to an authenticated store through Citrix Workspace app for Web sites.
- D. Have users connect using a Desktop Appliance site created in the StoreFront console.

Answer: ([SHOW ANSWER](#))

### NEW QUESTION: 13

What are three things a Citrix Architect should when using thin clones with Machine Creation Services (MCS)? (Choose three.)

- A. Provisioning speed is slower when compared to full clones.
- B. Storage space should be closely monitored.
- C. Storage fragmentation may occur over time.
- D. Higher storage space is required when compared to full clones.

<https://support.citrix.com/article/CTX224040>

<https://docs.citrix.com/en-us/citrix-virtual-apps-desktops/1912-ltsr/citrix-virtual-apps-and-desktops-7-1912-ltsr.pdf>

- E. Storage and virtual machine (VM) migration may be more complex when compared to full clones.

Answer: B,C,E ([LEAVE A REPLY](#))

### NEW QUESTION: 14

Scenario: A Citrix Architect is designing a Citrix Virtual Desktops environment. The Graphic Editors Group uses a graphic-intensive and media-rich application.

Graphic editors will be provided with a Windows Server 2016 Desktop with NVIDIA graphics hardware acceleration. HDX 3D Pro and Server VDI options were selected during the command-line installation of the Virtual Delivery Agent (VDA).

Which limitation will affect the Graphic Editors Group?

- A. Support is limited to the Thinwire graphics protocol.
- B. Each virtual desktop requires a dedicated NVIDIA graphics card.
- C. The Browser Content Redirection feature is NOT available.
- D. Support is available only for a single user session per VDA.

**Answer: D ([LEAVE A REPLY](#))**

### **NEW QUESTION: 15**

Scenario: A Citrix Architect needs to design a new XenApp and XenDesktop environment for a manufacturing company. During the project kickoff meeting, the organization states the following business priorities:

"All of our employees in our manufacturing plants and offices will be connected to the environment. We want to maintain control over our entire IT environment, but need to decrease the overall costs and management burden of supporting our existing use cases. Most of our employees use relatively simple applications, but a small team of engineers requires access to a graphic-intensive design and drafting application for their work." Which three design decisions will align with the stated business drivers? (Choose three.)

- A. Server OS Virtual Delivery Agent (VDA) machines should be used to increase user density per machine.
- B. Citrix XenServer should be used for graphic-intensive applications.
- C. SmartAccess and SmartControl should be implemented for the environment.
- D. Single image management solution should be included in the design.
- E. A multi-Site architecture and disaster recovery plan will be required.
- F. HDX 3D Pro should be incorporated into the design.

**Answer: ([SHOW ANSWER](#))**

### **NEW QUESTION: 16**

Scenario: A Citrix Architect is designing a new Citrix Virtual Apps and Desktops environment for a company with 2 branch offices connected over a WAN link. Each location will maintain its own Citrix Site and be configured for disaster recovery (DR) to allow users to failover if 1 Site has an outage. Management wants to implement a strong profile solution to manage user profiles. Each user maintains a profile that consists of user documents, application settings, and other personalization settings that must be available to them at all times.

Which step should the architect perform to ensure that profile requirements are met?

- A. Implement Citrix Profile Management for all users with Microsoft Distributed File System Replication (DFSR) active-passive profile replication configured over the WAN connection.
- B. Implement Citrix Profile Management for all users with Microsoft Distributed File System Replication (DFSR) active-active profile replication configured over the WAN connection.

C. Implement Citrix Profile Management for all users with Windows Folder Redirection configured, and Microsoft Distributed File System Replication (DFSR) active-active profile replication configured over the WAN connection.

D. Implement Citrix Profile Management for all users with Active write back enabled and Microsoft Distributed File System Replication (DFSR) active-active profile replication configured over the WAN connection.

<https://docs.citrix.com/en-us/profile-management/current-release/plan/high-availability-disaster-recovery-scenario-2.html>

**Answer: A (LEAVE A REPLY)**

**Valid 1Y0-403 Dumps** shared by Actual4test.com for Helping Passing 1Y0-403 Exam! Actual4test.com now offer the **newest 1Y0-403 exam dumps**, the Actual4test.com 1Y0-403 exam **questions have been updated** and **answers have been corrected** get the **newest** Actual4test.com 1Y0-403 dumps with Test Engine here:

[https://www.actual4test.com/1Y0-403\\_examcollection.html](https://www.actual4test.com/1Y0-403_examcollection.html) (244 Q&As Dumps, **30%OFF**

**Special Discount: Freepdfdumps**)

#### NEW QUESTION: 17

Scenario: A Citrix Architect needs to design a new XenApp and XenDesktop environment. The architect has identified the User Layer requirements, as shown in the Exhibit.

Click the Exhibit button to view the requirements.

User Group	User Devices	Connection Point	Security Requirements
Accountants	Corporate-owned desktops, laptops	Internal and External	Should NOT be permitted to access payroll and e-banking apps outside the corporate network
Sales Associates	BYOD smartphones, tablets	Internal and External	Have access to customer data and pricing information
Customers	Public kiosks	Internal	Use kiosks to access a published app hosted by a group of servers in an isolated network segment Should NOT have knowledge of Workspace Services credentials
Contractors	BYOD desktops, laptops	External	Should NOT have knowledge of Workspace Services credentials and must supply their own authentication provider

Additionally, management at the organization has identified the following general Access Layer requirements:

A multi-factor authentication method is required for any connections to the XenApp and XenDesktop environment originating from outside the corporate network.

External connections must be authenticated by a Citrix Gateway virtual server located in a DMZ network.

Internal connection traffic should NOT leave the internal corporate network.

Which Access Layer feature should the architect configure to meet the security requirements of the Accountants group?

- A. SmartControl
- B. Endpoint analysis scan
- C. SmartAccess
- D. Federated Authentication Service

**Answer: ([SHOW ANSWER](#))**

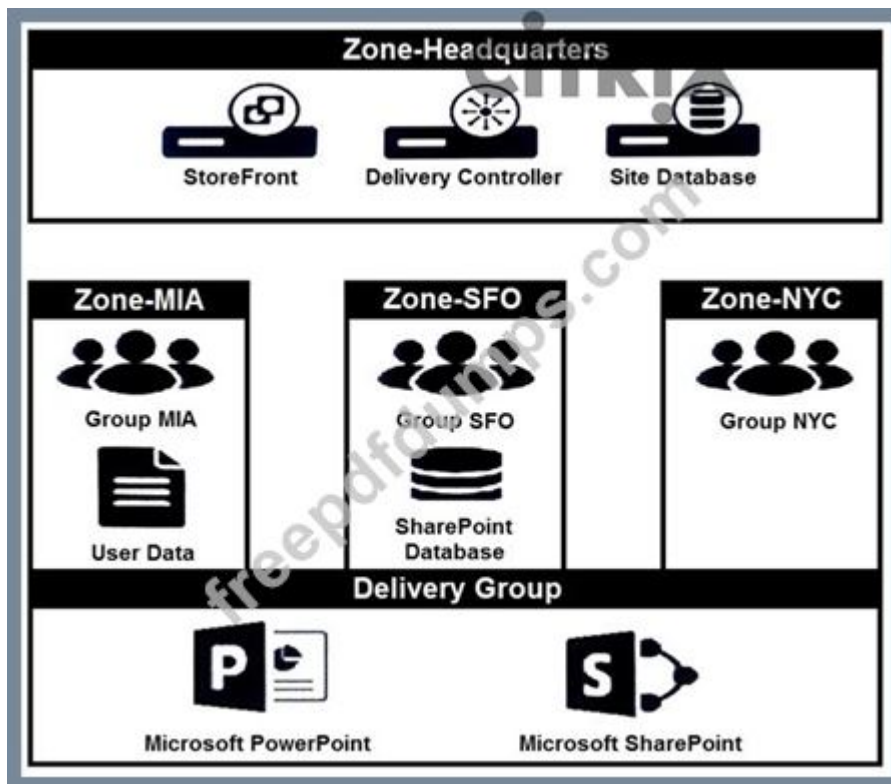
Both SmartAccess and SmartControl are similar in practice. One is implemented at the Delivery Controller level with the use of Citrix policies (SmartAccess) and the other is implemented at the NetScaler Gateway level (SmartControl). SmartControl was introduced in NetScaler v11, and is a Platinum feature.

SmartAccess and SmartControl can be used to block or allow certain components such as printer access, audio redirection, client device drive redirection and so on. SmartAccess policies can be applied based on the connecting user's IP address, Delivery Group, Client Name, Delivery Group Type and many more conditions that can be found within Citrix Studio policies.

### **NEW QUESTION: 18**

Scenario: A Citrix Architect is designing a new Citrix Virtual Apps and Desktops environment. The design has a Primary Zone and 3 Satellite Zones. Each Satellite Zone has a number of Virtual Delivery Agent (VDA) machines that belong to a single Delivery Group spanning all 3 Satellite Zones.

Click the Exhibit button to view more details about the configuration.



How should the architect ensure that the SharePoint application has optimal performance for all user groups?

- A. Use PowerShell to change the process priority to high for SharePoint within Zone-SFO.
- B. Publish SharePoint in an individual Delivery Group within each zone.
- C. Edit the zone properties to only allow SharePoint to launch in Zone-SFO.
- D. Edit the application properties to set Zone-SFO as the Home Zone for SharePoint.

**Answer:** ([SHOW ANSWER](#))

### NEW QUESTION: 19

Scenario: A Citrix Architect is designing a new Citrix Virtual Apps and Desktops environment. The Site will contain two Delivery Controllers. All machines are running on a single hypervisor platform. As part of the deployment, management has advised they want a database high-availability (HA) solution to protect the environment against the loss of a physical server.

Additional considerations for the SQL HA:

Downtime for Citrix administrative functions should be minimized.

Additional hardware or resources should be minimized.

Limited knowledge available to configure and maintain SQL infrastructure.

Which HA configuration should the architect use for this deployment?

- A. Local Host Cache
- B. SQL Mirroring
- C. SQL Clustering
- D. VM-Level HA
- E. SQL Always On

**Answer:** ([SHOW ANSWER](#))

### NEW QUESTION: 20

Scenario: During an assessment of a Citrix Infrastructure, a Citrix Architect finds that there are four active Sites. Each Site has one Citrix ADC SDX pair and two StoreFront servers in a server group to allow access for internal and external users. Users have to use different URLs when they access resources from different Sites. Single-factor authentication is used for both internal and external access. Citrix ADC appliances are placed in the DMZ with the appropriate firewall ports configured to allow Citrix traffic. Endpoint scanning is being used to ensure that an updated antivirus client is installed on BYO devices. Many of the internal users connect using corporate-owned laptops and some external users also connect using their own devices.

Which two risks can the architect identify from this scenario? (Choose two.)

- A. There is no automatic failover between different Sites.
- B. Separate URLs are used to access different Sites.
- C. The Citrix ADC appliance is placed in the DMZ.
- D. Personal devices are being used.
- E. Single-factor authentication is used.

**Answer: C,D (LEAVE A REPLY)**

### NEW QUESTION: 21

Scenario: A Citrix Architect completed an assessment of an existing environment. The architect learned that one of the business requirements dictate that automatic update functionality is disabled, and that deployment is exclusively done by electronic software distribution (ESD).

Which parameter is required to configure the Citrix Workspace Updates settings from the command line interface, when installing Citrix Workspace app for Windows?

- A. /AutoUpdateStream=current
- B. /AutoUpdateCheck=auto
- C. /AutoUpdateStream=disabled
- D. /AutoUpdateCheck=disabled

**Answer: D (LEAVE A REPLY)**

Reference:

<https://docs.citrix.com/en-us/receiver/windows/4-9/citrix-receiver-for-windows-4.9-ltsr.pdf> (40)

### NEW QUESTION: 22

Scenario: A Citrix Architect is using LDAP as single-factor authentication. The architect is migrating the environment to Citrix Cloud and wants to retain the same authentication procedure for XenApp and XenDesktop service in Citrix Cloud.

Which deployment strategy should the architect use for NetScaler and StoreFront to ensure that the solution reduces management overhead without incurring additional costs?

- A. Use Citrix Cloud NetScaler Gateway service and on-premises StoreFront.
- B. Set up NetScaler with bring-your-own license (BYOL) and StoreFront in a public cloud.
- C. Use Citrix Cloud NetScaler Gateway service and Citrix Cloud Workspace.

D. Set up a new NetScaler VPX instance and StoreFront on-premises.

Answer: ([SHOW ANSWER](#))

### NEW QUESTION: 23

Scenario: A Citrix Architect needs to design a new XenApp and XenDesktop environment. The architect has identified the requirements, based on the assessment and early stages of the design. Click the Exhibit button to view the requirements.

Design Topic	Design Decision
Deployment type	On-premises datacenter
Licensing	XenApp Enterprise edition, concurrent licenses
Max concurrent users	500
Images	<ul style="list-style-type: none"><li>• Windows Server 2012 R2<ul style="list-style-type: none"><li>◦ FlexCast model: Published apps</li></ul></li></ul>
Primary Applications	<ul style="list-style-type: none"><li>• Microsoft Office 2016: All users</li><li>• Adobe Acrobat: All users</li><li>• Mozilla Firefox: All users</li></ul>

Additionally, the IT team has identified the following general requirements:

The provisioning strategy should be compatible with the planned design decisions.

The provisioning strategy should minimize the steps required to perform image and application updates.

Which three follow-up questions should the architect ask about this environment, based on the planned design decisions? (Choose three.)

- A. What is the VM uplink speed in the current deployment?
- B. How much storage is available for the Virtual Delivery Agent (VDA) machines?
- C. Are there any applications which must only be accessed by a subset of users?
- D. Is PXE currently being used in the subnets where the Virtual Delivery Agent (VDA) machines will be placed?
- E. Will the machines using the images be physical or virtual?

Answer: A,B,D ([LEAVE A REPLY](#))

### NEW QUESTION: 24

Scenario: Engineers at a new company developed their product and infrastructure in Microsoft Azure. The engineers have reached out to a Citrix Architect to help design an Azure infrastructure to support publishing applications using the Citrix Virtual Apps and Desktops service. Costs need to be kept to a minimum.

Which Azure virtual machine (VM) series provides the lowest cost per user while also providing good performance?

- A. A-series
- B. B-series
- C. H-series
- D. D-series

**Answer: D (LEAVE A REPLY)**

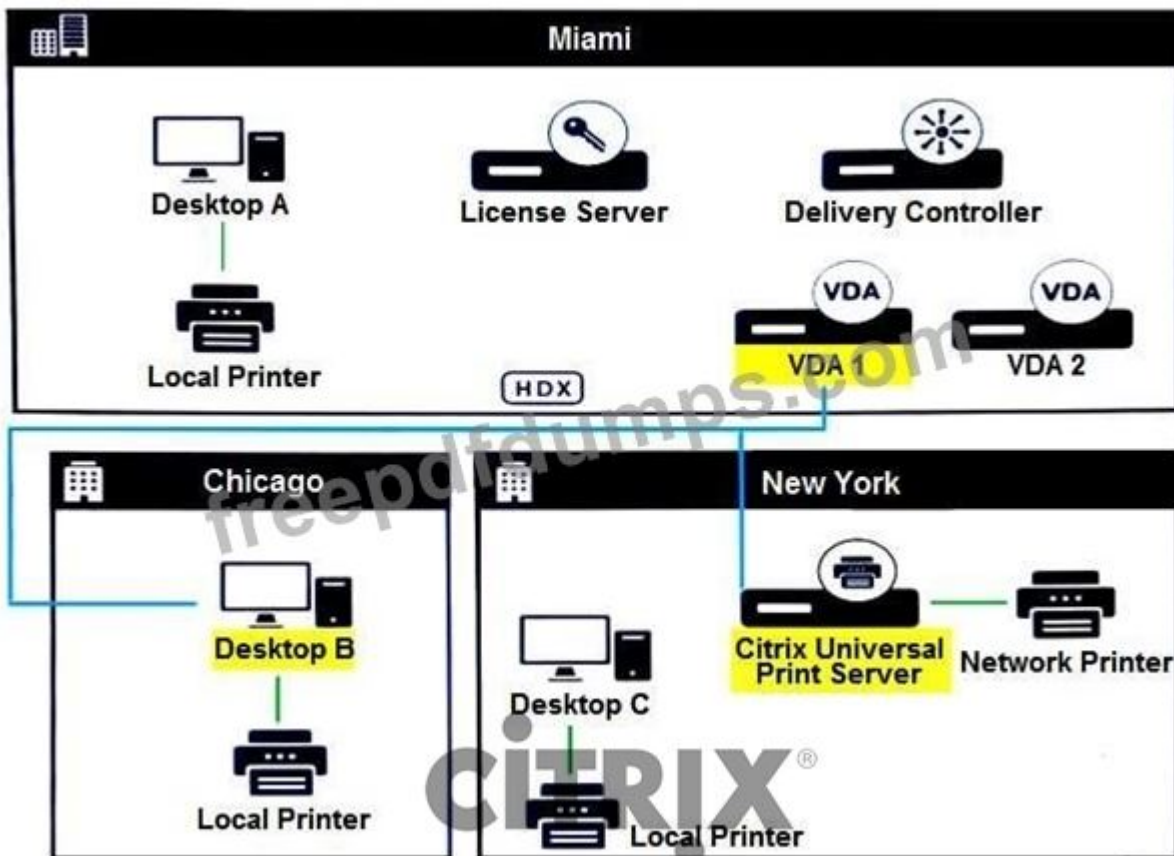
<https://docs.citrix.com/en-us/tech-zone/design/reference-architectures/virtual-apps-and-desktops-azure.html>

**NEW QUESTION: 25**

Scenario: A Citrix Architect is designing a new Citrix Virtual Apps and Desktops environment for a company that maintains branch offices in New York, Chicago, and Miami. Management has described the following requirements for the environment:

- \* The Citrix Virtual Apps and Desktops Site must be located in the company headquarters in Miami.
- \* All users will only need to access their default local print queue from within their HDX sessions.
- \* Users in Chicago need access to printers hosted on a Citrix Universal Print Server located in New York.
- \* Printing performance and bandwidth usage must be optimized where possible.
- \* The environment must be highly available.
- \* The auto-created client printer models must function with no additional configuration needed.

Click the Exhibit button to review the printing requirements.



What does the architect need to do to meet the printing requirements for the users in Chicago?

**A.** Enable the Auto-create client printers policy with 'Auto-create all client printers' setting enabled. Enable the Universal print driver usage policy to 'Use universal printing only'. Apply the policy to all users. Then, install and configure the Citrix Universal Print Server components and configure the Universal Print Server policy to 'Enabled with no fallback to Windows native remote

printing'. Last, create a session printer policy, add the network printers that will use the Universal Print Server, and apply the policy to the users in Chicago.

**B.** Enable the Auto-create client printers policy with 'Auto-create all client printers' setting enabled. Enable the Universal print driver usage policy to 'Use universal printing only'. Apply the policy to Chicago users.

Then, install and configure the Citrix Universal Print Server components and configure the Universal Print Server policy to 'Enabled with fallback to Windows native remote printing'. Last, create a session printer policy, add the network printers that will use the Universal Print Server, and apply the policy to all users.

**C.** Enable the Auto-create client printers policy with 'Auto-create all client's default printer only' setting enabled. Enable the Universal print driver usage policy to 'Use universal printing only if requested driver is unavailable'. Apply the policy to all users. Then, install and configure the Citrix Universal Print Server components and configure the Universal Print Server policy to 'Enabled with fallback to Windows native remote printing'. Last, create a session printer policy, add the network printers that will use the Universal Print Server, and apply the policy to all users.

**D.** Enable the Auto-create client printers policy with 'Auto-create all client's default printer only' setting enabled. Enable the Universal print driver usage policy to 'Use universal printing only'. Apply the policy to all users. Then, install and configure the Citrix Universal Print Server components and configure the Universal Print Server policy to 'Enabled with fallback to Windows native remote printing'. Last, create a session printer policy, add the network printers that will use the Universal Print Server, and apply the policy to the users in Chicago.

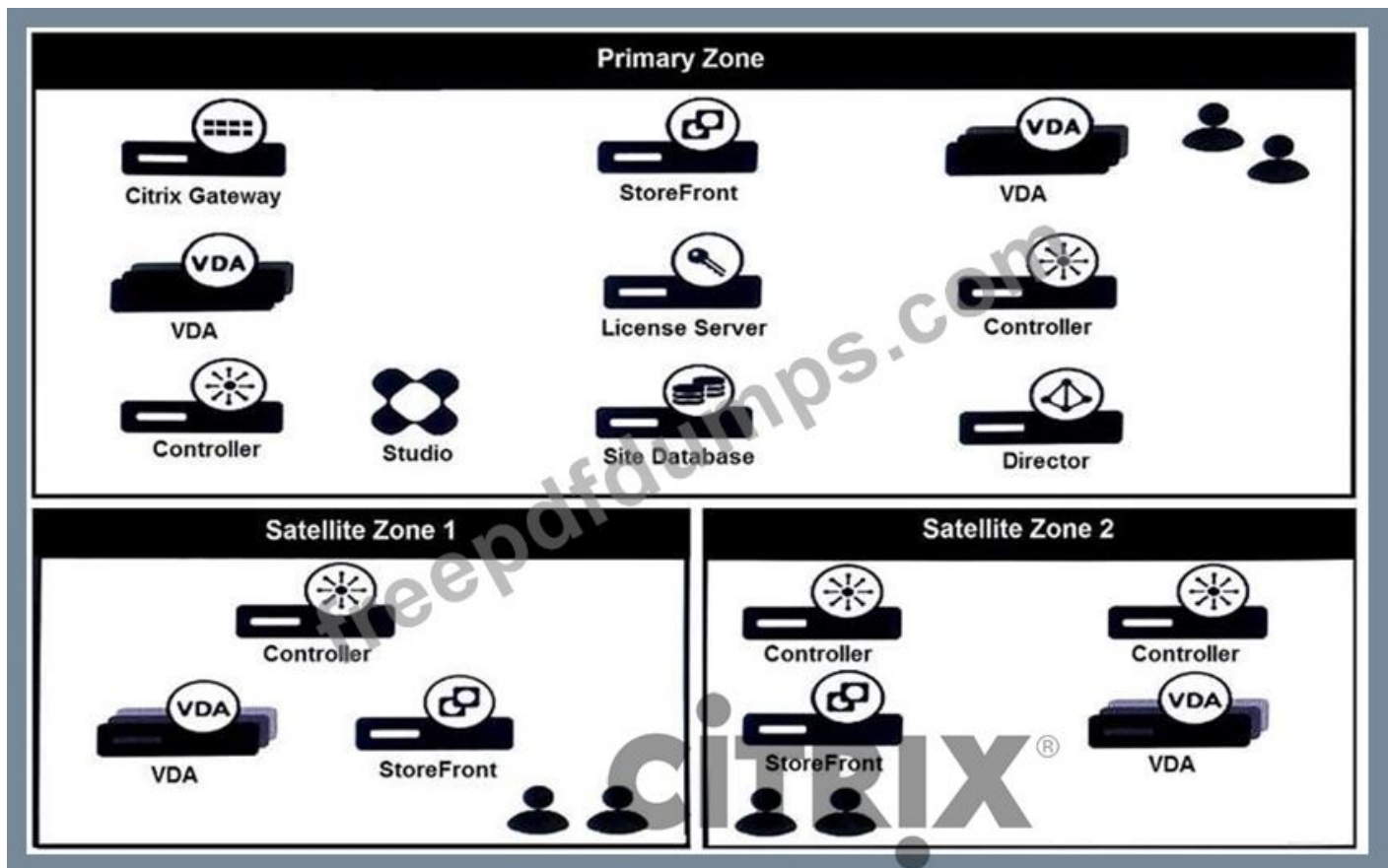
**Answer: D (LEAVE A REPLY)**

Explanation/Reference: <https://docs.citrix.com/en-us/citrix-virtual-apps-desktops/policies/reference/ica-policy-settings/printing-policy-settings/client-printers-policy-settings.html>

### **NEW QUESTION: 26**

Scenario: A Citrix Architect needs to assess a Citrix Virtual Apps and Desktops environment. The Citrix Virtual Apps and Desktops diagram in the exhibit gives details about the current Site and zone design.

Click the Exhibit button to view the diagram.



Which statement is correct if all Delivery Controllers in the Primary Zone fail?

- A. Virtual Delivery Agent (VDA) machines in the Primary Zone will register within Satellite Zone 2.
- B. Virtual Delivery Agent (VDA) machines in the Primary Zone will register within Satellite Zone 1.
- C. Virtual Delivery Agent (VDA) machines in the Primary Zone will NOT register within Satellite Zone 1 or Satellite Zone 2.
- D. Satellite Zone 2 will be promoted and the Primary Zone Virtual Delivery Agent (VDA) machines will register within Satellite Zone 2.

**Answer: D (LEAVE A REPLY)**

#### NEW QUESTION: 27

Which access component will support anonymous access within a new environment?

- A. Citrix StoreFront
- B. Citrix Gateway Service
- C. Citrix ADC
- D. Citrix Workspace

**Answer: (SHOW ANSWER)**

#### NEW QUESTION: 28

Scenario: A Citrix Architect needs to design a new XenApp and XenDesktop environment.

The architect has identified the User Layer requirements, as shown in the Exhibit.

Click the Exhibit button to view the requirements.

User Group	User Devices	Connection Point	Security Requirements
Accountants	Corporate-owned desktops, laptops	Internal	Should minimize user effort required to authenticate while meeting general security requirements
Executives	BYOD smartphones, tablets	Internal and External	Should minimize user effort required to authenticate while meeting general security requirements
Customers	Public kiosks	Internal	Use kiosks to access a published app hosted by a group of servers in an isolated network segment  Should NOT have knowledge of Workspace Services credentials
Contractors	BYOD desktops, laptops	External	User devices must have up-to-date antivirus software installed before they can access the XenApp and XenDesktop environment.  Should NOT have knowledge of Workspace Services credentials and must supply their own authentication provider.

Additionally, management at the organization has identified the following general Access Layer requirements:

- A multi-factor authentication method is required for any connections to the XenApp and XenDesktop environment originating from outside the corporate network.

- External connections must be authenticated by a Citrix Gateway virtual server located in a DMZ network.

- Internal connection traffic should NOT leave the internal corporate network.

Which Access Layer feature should the architect configure to meet the security requirements of the Contractors group?

- A. Endpoint analysis scan
- B. SmartControl
- C. Citrix Gateway
- D. Citrix ADC Double Hop
- E. SmartAccess

**Answer: (SHOW ANSWER)**

<https://support.citrix.com/article/CTX205265>

### NEW QUESTION: 29

Scenario: A Citrix Architect is designing a new Citrix Virtual Apps and Desktops environment. The environment will utilize Citrix Provisioning (PVS) for image management of physical and virtual

machines (VMs). Upon review of the current network infrastructure, the architect determined a number of considerations that will impact the overall imaging process.

Click the Exhibit button to view the existing internal network and PVS infrastructure details.

Network Architecture	Network Hardware/Servers	Target Devices
Single DNS Active Directory (AD) domain	Four Citrix Provisioning (PVS) servers	100 Target Devices (mix of physical and virtual machines)
One PVS Farm with 2 Sites, each containing 2 PVS servers  PVS Site 1 on Subnet A PVS Site 2 on Subnet B	Routers between Subnet A and Subnet B have all required ports configured for necessary services	Auto negotiation is enabled on the NIC of target devices
	No internal firewalls	
10 Gbps NICs, running full duplex mode on PVS servers and target devices	PVS vDisks are replicated between each PVS server	

What should the architect do to optimize the Citrix Provisioning server to target device communication and the streaming process?

- A. Enable Replication and set to Fixed
- B. Enable Subnet Affinity and set to Fixed
- C. Enable Replication and set to Best Effort
- D. Enable Subnet Affinity and set to None

Answer: ([SHOW ANSWER](#))

**NEW QUESTION: 30**

Scenario: A Citrix Architect is designing a new Citrix Virtual Apps and Desktops environment. Based on some initial discussions about the business goals and objectives of the company, the architect collected the information shown in the exhibit.

Click the Exhibit button to view the information.

Category	Detail
Application Name	HealthApp
Description	The application is an electronic medical recording (EMR) solution for large hospitals and healthcare systems. HealthApp has its own authentication engine to control access to sensitive data.
Usage	The application will be used by all employees in the organization.
OS Compatibility	The application is compatible with the Virtual Desktop Access (VDA) operating systems.
Special Considerations	All users will access HealthApp from non-domain, joined kiosk devices.  Session reconnection and session roaming capabilities are NOT required.

What should the architect recommend to meet customer requirements?

- A. Have users connect to an unauthenticated store through the Citrix Workspace app for Web sites.
- B. Have users connect to an authenticated store through Citrix Workspace app for Web sites.
- C. Have users connect using a Desktop Appliance site created in the StoreFront console.
- D. Have users connect to an authenticated store through the Citrix Virtual Apps Services URL.

**Answer: D ([LEAVE A REPLY](#))**

**NEW QUESTION: 31**

Scenario: A Citrix Architect is designing a Citrix Virtual Desktops environment. The Engineer Group requires NVIDIA hardware with shared virtualized GPUs due to its use of graphical applications. Management wants to use 4 components within the Citrix Virtual Desktops environment to meet these requirements:

NVIDIA GRID Tesla P40 GPUs

Microsoft Hyper-V Server 2012 R2

Windows 10 virtual machines (VMs)

Citrix Virtual Desktops 7

Which component must the architect change to implement this use case?

**A.** Citrix Virtual Desktops 7

**B.** Microsoft Hyper-V Server 2012 R2

<https://docs.nvidia.com/grid/5.0/grid-vgpu-release-notes-microsoft-windows-server/index.html>

**C.** Windows 10 virtual machines

**D.** NVIDIA GRID Tesla P40 GPUs

**Answer: B ([LEAVE A REPLY](#))**

**Valid 1Y0-403 Dumps** shared by Actual4test.com for Helping Passing 1Y0-403 Exam!

Actual4test.com now offer the **newest 1Y0-403 exam dumps**, the Actual4test.com 1Y0-403 exam **questions have been updated** and **answers have been corrected** get the **newest** Actual4test.com 1Y0-403 dumps with Test Engine here:

[https://www.actual4test.com/1Y0-403\\_examcollection.html](https://www.actual4test.com/1Y0-403_examcollection.html) (244 Q&As Dumps, **30%OFF**)

**Special Discount: [Freepdfdumps](#)**)

**NEW QUESTION: 32**

Scenario: A Citrix Architect is designing a new Citrix Virtual Apps and Desktops environment. Citrix Provisioning (PVS) has been selected for image management. The PVS vDisk store requires high fault tolerance and the ability to support dual drive failure.

Which RAID level could the architect use for the PVS vDisk store?

**A.** RAID 5

**B.** RAID 6

**C.** RAID 0

**D.** RAID 1

**Answer: B ([LEAVE A REPLY](#))**

Explanation/Reference:

Reference: <https://docs.citrix.com/en-us/xenapp-and-xendesktop/7-15-ltsr/citrix-vdi-best-practices/design/design-userlayer5.html>

### NEW QUESTION: 33

Scenario: An additional zone was recently added to a Citrix Virtual Apps and Desktops environment. The main zone is located in New York City, and a small, second zone is located in Tokyo. Within the next year, the number of users in Tokyo is expected to equal that in New York City.

A Citrix Architect recommended the addition of 2 StoreFront servers in Tokyo to support the users.

What should the architect recommend for this environment to ensure user-experience consistency and reduce WAN bandwidth consumption?

- A. Add 2 StoreFront servers to the same server group
- B. Add 2 StoreFront servers to separate server groups and configure subscription synchronization
- C. Add 2 StoreFront servers and configure the Optimal Gateway routing feature
- D. Add 2 standalone StoreFront servers

**Answer: C** ([LEAVE A REPLY](#))

### NEW QUESTION: 34

Scenario: A Citrix Architect needs to design a new XenApp and XenDesktop environment. The customer previously installed all applications locally on managed laptops and desktops but is willing to evaluate other application delivery methods as part of the new deployment. The environment will be standardized on Windows 10 and Windows Server 2016 for the Virtual Delivery Agent (VDA) machines.

As part of an application analysis performed earlier in the project, the information in the Exhibit was collected regarding one of the required applications.

Click the Exhibit button to view the information.

Category	Detail
Application Name	Workspace PDF
Description	Application that can be used to view, create, edit, and publish PDFs
Usage	The application is used throughout the organization.
OS Compatibility	The application is compatible with the target operating systems.
Special Considerations	The application uses a Windows service to print PDFs and another to convert PDF files to and from other file formats.  The application includes shell extensions that are integral to the user workflow.

Additionally, the customer has the following objectives:

- Minimize the time required to perform application patches and updates
  - Each department should have a dedicated image that is NOT accessible to other departments
  - Each departmental image should only include the applications required by that department
- How should the architect install the application?

- A. Directly on endpoint devices and included in a virtual desktop session using the Local App Access feature
- B. On an Application Layer using Citrix App Layering, be included in a layered image, and accessed through a virtual desktop session
- C. Directly on a Server OS VDA machine and accessed from the endpoint as a published application
- D. Stream it to a VDA machine using Microsoft App-V and accessed through a virtual desktop session
- E. On an Application Layer using Citrix App Layering then be presented to assigned users as an Elastic Layer during a virtual desktop session

**Answer: C (LEAVE A REPLY)**

Note: Virtual Apps will provide more users per server so less servers while Virtual Desktops will be 1 user per VD so more servers to sustain the same amount of apps instance.

### **NEW QUESTION: 35**

Scenario: A Citrix Architect is designing a new Citrix Virtual Apps and Desktops environment for a marketing and design company. One department uses several 3D applications based on OpenGL. These applications run as hosted applications within a single virtual machine (VM) running on a single Citrix Hypervisor host. The host is configured with 2 physical GPUs running NVIDIA GRID technology.

Which HDX 3D Pro method should the architect use for these 3D applications?

- A. Software-virtualized GPU
- B. Pass-through GPU
- C. Hardware-virtualized GPU
- D. CUDA-virtualized GPU

**Answer: B (LEAVE A REPLY)**

Explanation/Reference: <https://docs.citrix.com/en-us/citrix-virtual-apps-desktops/graphics/hdx-3d-pro.html>

### **NEW QUESTION: 36**

Scenario: A Citrix Architect needs to design a new XenApp and XenDesktop environment.

The architect has identified printing requirements for certain user groups and locations, as shown in the Exhibit.

Click the Exhibit button to view the requirements.

User Groups	Endpoint	Location	Receiver Type	Printer Types	Driver Installed on VDA	Print Features Needed
Accountants	Corporate-owned	Corp HQ Home	Receiver 4.10	Accountant Network Printer	Yes	Special ERP Print
Executives	Corporate-owned	Corp HQ	Receiver 4.10	All Client Printers	No	Office Print Duplex
Graphic Designers	Mac BYOD	Home	MAC Receiver 4.10	Design Network Printer	No	High-Resolution Print
Customer Service	Corporate-owned	India Branch Office	Receiver 4.10	Main Client Printer	No	Basic A4 Single-Side

Currently, no printer settings or policies have been configured, and as such, the environment is using default settings. Universal Print Server will NOT be used in this design.

Which two settings should the architect configure to allow the Executives group to achieve the desired print behavior and to ensure their print jobs are optimally routed? (Choose two.)

- A. Set Auto-create Client Printers policy to auto-create local printers only
- B. Enable Auto-create PDF Universal Printer policy
- C. Set Direct connections to print servers policy to Enabled
- D. Set Direct connections to print servers policy to Disabled
- E. Configure Session Printers policy
- F. Configure Default Printers policy
- G. Set Auto-create Client Printers policy to auto-create all client printers

**Answer: C,G (LEAVE A REPLY)**

Direct connections to print servers

This setting enables or disables direct connections from the virtual desktop or server hosting applications to a print server for client printers hosted on an accessible network share.

By default, direct connections are enabled.

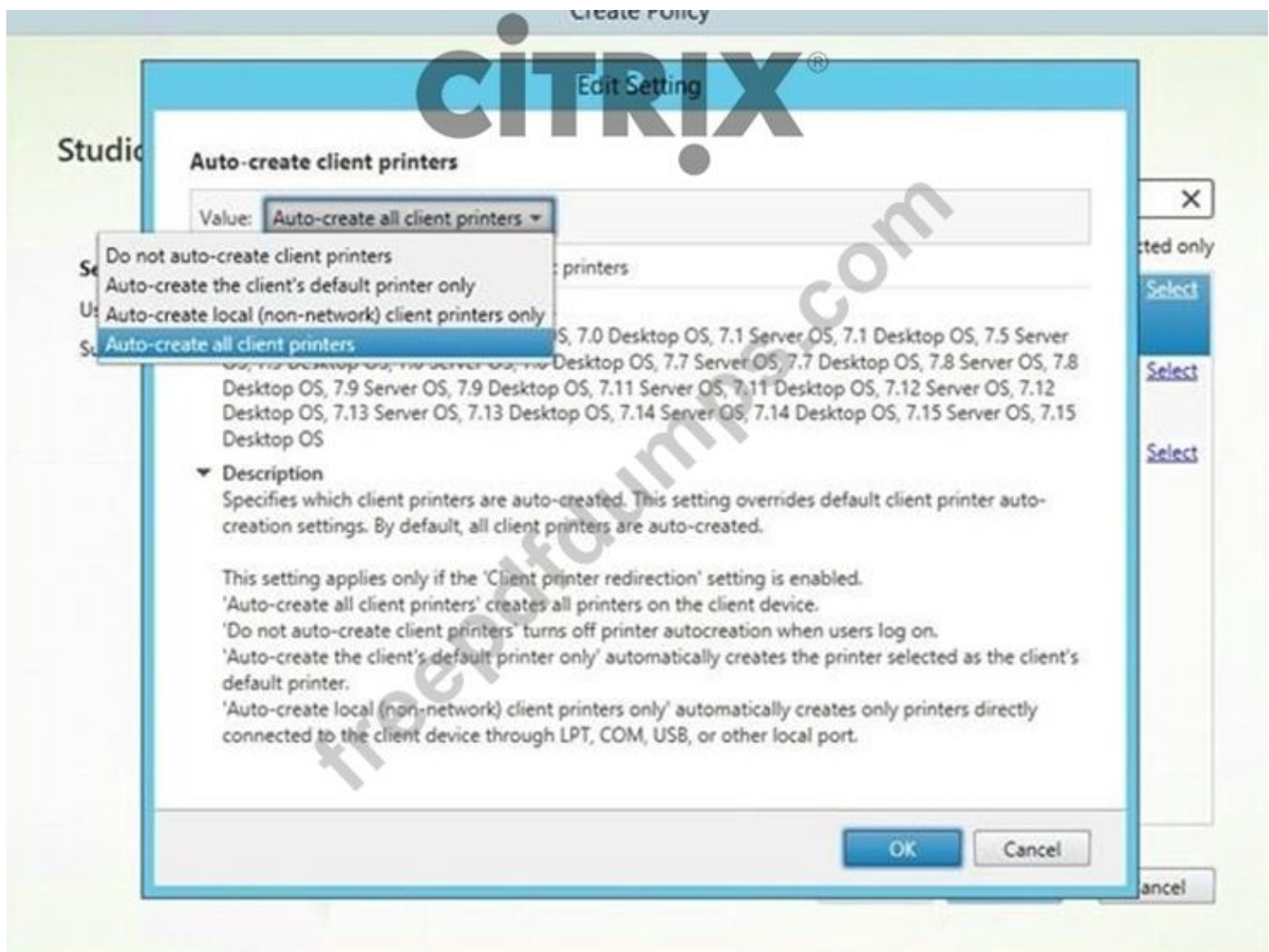
Enable direct connections if the network print server is not across a WAN from the virtual desktop or server hosting applications. Direct communication results in faster printing if the network print server and the virtual desktop or server hosting applications are on the same LAN.

Disable direct connections if the network is across a WAN or has substantial latency or limited bandwidth. Print jobs are routed through the user device where they are redirected to the network print server. Data sent to the user HQ device is compressed, so less bandwidth is consumed as the data travels across the WAN.

If two network printers have the same name, the printer on the same network as the user device is used.

<https://docs.citrix.com/en-us/xenapp-and-xendesktop/7-15-itsr/policies/reference/ica-policy-settings/printing-policy-settings/client-printers-policy-settings.html> Note:

G: Why?



A: Set Auto-create Client Printers policy to auto-create local printers only.

No, because we want all client printers which will include local (non-network) and network printers.

E: Configure Session Printers policy - No, because we will have to list all the network printers to be auto- created.



### NEW QUESTION: 37

Scenario: A Citrix Architect is designing a new infrastructure that will use Citrix Virtual Apps and Desktops to deploy applications in New York, Chicago and Seattle data centers. All 3 data centers will be active simultaneously.

Which feature should the architect recommend to connect the remote users to the closest or best-performing data center?

- A. Global Server Load Balancing
- B. StoreFront Resource Aggregation
- C. Zone Preference and Failover
- D. Optimal Gateway Routing

**Answer:** ([SHOW ANSWER](#))

Reference:

<https://www.citrix.com/blogs/2014/03/29/xendesktop-gslb-dr-everything-you-think-you-know-is-probably-wrong/>

### NEW QUESTION: 38

Scenario: The IT team of a company configured its Citrix environment on Microsoft Azure. Load on the servers is nominal during the off season, but during peak season, load increases on the infrastructure servers. This load varies from year to year. A Citrix Architect is asked to design a solution that dynamically increases and decreases the number of infrastructure servers.

What should the architect recommend the IT team create in Microsoft Azure to meet this demand?

- A. Availability sets
- B. Resource group
- C. Scale sets
- D. Availability domains

**Answer: (SHOW ANSWER)**

Reference:

<https://docs.citrix.com/en-us/advanced-concepts/implementation-guides/citrix-adc-vpx-on-azure-autoscale-deployment-guide.html>

**NEW QUESTION: 39**

Scenario: A Citrix Architect is designing a XenDesktop environment. The Graphic Designers group uses a graphic-intensive application. Graphic Designers will be provided with a Windows 10 Hosted Personal Desktop, with NVIDIA graphics hardware acceleration. HDX 3D Pro mode was selected during the installation of Virtual Delivery Agent (VDA).

What is the maximum number of monitors supported for the Graphic group?

- A. 6
- B. 2
- C. 8
- D. 4

**Answer: D (LEAVE A REPLY)**

Standard mode	HDX 3D Pro mode
Usually best for virtual desktops without graphics hardware acceleration, and for Remote PC Access.	Usually best for data center desktops with graphics hardware acceleration, unless more than four monitors are necessary.
Any GPU can be used for Remote PC Access, with some app compatibility limitations: <b>On Windows 7, 8, and 8.1</b> , GPU acceleration for DirectX feature levels up to 9.3. Some DirectX 10, 11, 12 applications may not run if they do not tolerate fallback to DirectX 9; <b>on Windows 10</b> , GPU acceleration is provided for windowed DirectX 10, 11, and 12 apps. DX 9 apps are rendered by WARP. DX apps cannot be used in full-screen mode; <b>OpenGL application acceleration</b> in remote sessions if supported by the GPU vendor (currently only NVIDIA).	Supports GPU acceleration with any GPU. However, console blanking, non-standard screen resolutions and true multi-monitor support require NVIDIA GRID, Intel Iris Pro, or AMD RapidFire graphics. Leverages graphics vendor's driver for broadest application compatibility: <b>all 3D APIs (DirectX or OpenGL)</b> that the GPU supports; <b>full-screen 3D app support</b> with Intel Iris Pro (Win10 only), NVIDIA GRID, and AMD RapidFire; <b>support for custom driver extensions and APIs</b> . For example, CUDA or OpenCL.
Arbitrary monitor resolutions (limit determined by Windows OS and performance) and up to eight monitors.	Supports up to four monitors.
H.264 hardware encoding available with Intel Iris Pro graphics processors.	H.264 hardware encoding available with Intel Iris Pro graphics processors and NVIDIA cards.

**NEW QUESTION: 40**

Scenario: A Citrix Architect needs to design a new XenApp and XenDesktop environment. The customer previously installed all applications locally on managed laptops and desktops but is willing to evaluate other application delivery methods as part of the new deployment. The environment will be standardized on Windows 10 and Windows Server 2016 for the Virtual Delivery Agent (VDA) machines.

As part of an application analysis performed earlier in the project, the information shown in the Exhibit was collected regarding one of the required applications.

Click the Exhibit button to view the information.

Category	Detail
Application Name	Workspace Inventory 3.0
Description	Inventory tracker and management software - Most end users will use this application to perform data entry tasks, while managers will use the application to view data and create reports.
Usage	This application will be used by most employees in the organization.
OS Compatibility	The application is compatible with the target operating systems.
Special Considerations	N/A

Additionally, the customer has the following objectives:

- Minimize the amount of additional infrastructure components.

- Utilize thin clients as endpoints in order to reduce costs.

- Users should NOT have direct access to the thin client operating system.

How should the architect install the application?

- A. Directly on a VDA machine image and accessed through a virtual desktop session
- B. On an Application Layer using Citrix App Layering and included in a layered image and accessed through a virtual desktop session
- C. Directly on endpoint devices and included in a virtual desktop session using the Local App Access feature
- D. Stream it to a VDA machine using Microsoft App-V and accessed through a virtual desktop session
- E. On an Application Layer using Citrix App Layering then presented to assigned users as an Elastic Layer during a virtual desktop session

**Answer: (SHOW ANSWER)**

A would be easier. App Layering needs additional infrastructure.

**NEW QUESTION: 41**

Scenario: A Citrix Architect is designing a new Citrix Virtual Apps and Desktops environment. The customer previously installed all applications locally on managed laptops and desktops, but is willing to evaluate other application delivery methods as part of the new deployment. The environment will be standardized on Windows 10 for the Virtual Delivery Agent (VDA) machines.

As part of an application analysis performed earlier in the project, the information in the exhibit was collected regarding 1 of the required applications.

Click the Exhibit button to view the information.

Category	Detail
Application Name	Visual Studio
Description	The application is used to develop computer programs, websites, web apps, web services, and mobile apps.
Usage	The application will be used by developers working in the organization.
OS Compatibility	The application is compatible with the target operating systems.
Special Considerations	The users are internal and external contractors, third-party collaborators, and other provisional team members who do NOT require offline access to the application.  The application contains a number of Windows services.

The customer's security policies mandate that all development software must run within the corporate data center, but should appear to the user as if it is running locally on the virtual machine (VM).

How should the architect recommend deploying the application?

- A. Install it in an Application Layer using Citrix App Layering, then present it to users as an Elastic Layer during a virtual a virtual desktop session.
- B. Install it directly on the endpoint devices, and include it in a virtual desktop session using the Local App Access feature.
- C. Stream it to a VDA machine using Microsoft App-V, and access it through a virtual desktop session.
- D. Push it to users with a Workspace Environment Management (WEM) action option.
- E. Use Desktop OS machines to deliver VM hosted applications.

**Answer:** ([SHOW ANSWER](#))

#### NEW QUESTION: 42

Scenario: A Citrix Architect designed an active/passive XenApp and XenDesktop environment for a customer, where the passive Site serves as the disaster recovery Site for all users.

The architect configured a DFS root for user profiles and redirected folders and configured DFS-R to replicate the user profiles and data to a fileserver in the disaster recovery Site.

During failover testing, no issues were reported; however, today the customer has an unexpected outage in StoreFront on the active Site which causes sessions to start flowing to the passive Site.

The customer reports that several users are experiencing issues logging on and has also stated that Citrix Director is NOT showing any issues for the passive Site.

What is likely causing this issue?

- A. DFS-R is NOT supported for use with Citrix Profile Management.
- B. StoreFront in the passive Site is aggregating Virtual Delivery Agent (VDA) machines in the primary Site.
- C. Virtual Delivery Agent (VDA) machines in the passive Site are NOT registered.
- D. User sessions in the primary datacenter are still active.

**Answer:** C ([LEAVE A REPLY](#))

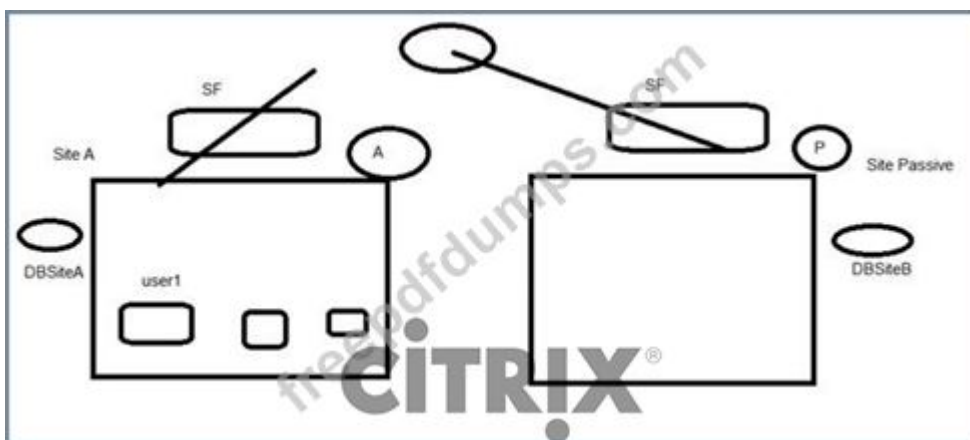
<https://docs.citrix.com/en-us/profile-management/current-release/plan/high-availability-disaster-recovery-scenario-2.html>

There are two forms of replication to consider:

One-way replication (also known as active-passive replication) is designed for backing up critical data to a safe repository. This replication makes it suitable for maintaining a disaster recovery site, for example. It can be made to work with Profile Management so long as the passive targets are disabled for referrals, and are only invoked when the disaster recovery plan is activated.

Two-way replication (also known as active-active replication) is intended to provide local read-write access to global shared data. Instantaneous replication is not necessarily a requirement here. The shared data may be modified infrequently. Important: Active-active DFSR is not supported.

D: Can't be because different sites have different DBs and the sessions won't be "shared".



B: Makes no sense

### NEW QUESTION: 43

Scenario: A Citrix Architect designed an environment where policies will be deployed using Workspace Environment Management (WEM). The architect decided to install two WEM Infrastructure Services servers in order to meet the expected load in the environment.

What should the architect do to ensure that both servers can be utilized in the environment?

- A. Configure a load-balancing virtual IP (VIP) on a Citrix ADC appliance so that both servers can actively receive communications.
- B. Enter both server names in the Agent Host Configuration so that both servers will be actively contacted.
- C. Configure two virtual IPs (VIPs) on a Citrix ADC appliance: one for the primary server, and one for the backup server.
- D. Enter both server names in the Agent Host Configuration; the first server listed will be contacted first; the second server will be in a standby capacity until needed.

Answer: A ([LEAVE A REPLY](#))

### NEW QUESTION: 44

Scenario: While assessing the User Layer, a Citrix Architect finds that most of the internal users connect using corporate-owned laptops, desktop devices, and thin clients. Many of these laptops

and desktop devices are running Windows 10, while the remainder of the machines are running Windows 7 and are in the process of being migrated to Windows 10. Some users also connect using personal devices.

Currently, Citrix Receiver is manually installed on any endpoint device added to the company. All these devices use Citrix Receiver version 4.8 and above. Some of the internal users with Windows laptops are experiencing issues in which devices such as a keyboard, mouse, a monitor connected to a docking station or a USB hub are NOT usable in an HDX session.

Which action should the architect recommend to provide a uniform user experience for all users?

- A. Upgrade all clients to the latest version of Citrix Receiver
- B. Upgrade drivers of peripheral devices
- C. Recreate user accounts in Active Directory
- D. Recreate user profiles

**Answer: A (LEAVE A REPLY)**

#### **NEW QUESTION: 45**

Scenario: A Citrix Architect is designing a new Citrix Virtual Apps and Desktops Service environment in Citrix Cloud. During the kickoff meeting, management advised that they need a robust, scalable image-provisioning strategy that allows for easy image and application maintenance to deploy a large number of applications to users. This should include company-wide applications and departmental applications to be used only by specific sets of users. Some applications will require run-once scripts at system startup for product licensing.

Which image provisioning strategy should the architect use for this deployment?

- A. Application Layering
- B. Manual Provisioning
- C. Citrix Provisioning (PVS)
- D. Machine Creation Services (MCS)

**Answer: C (LEAVE A REPLY)**

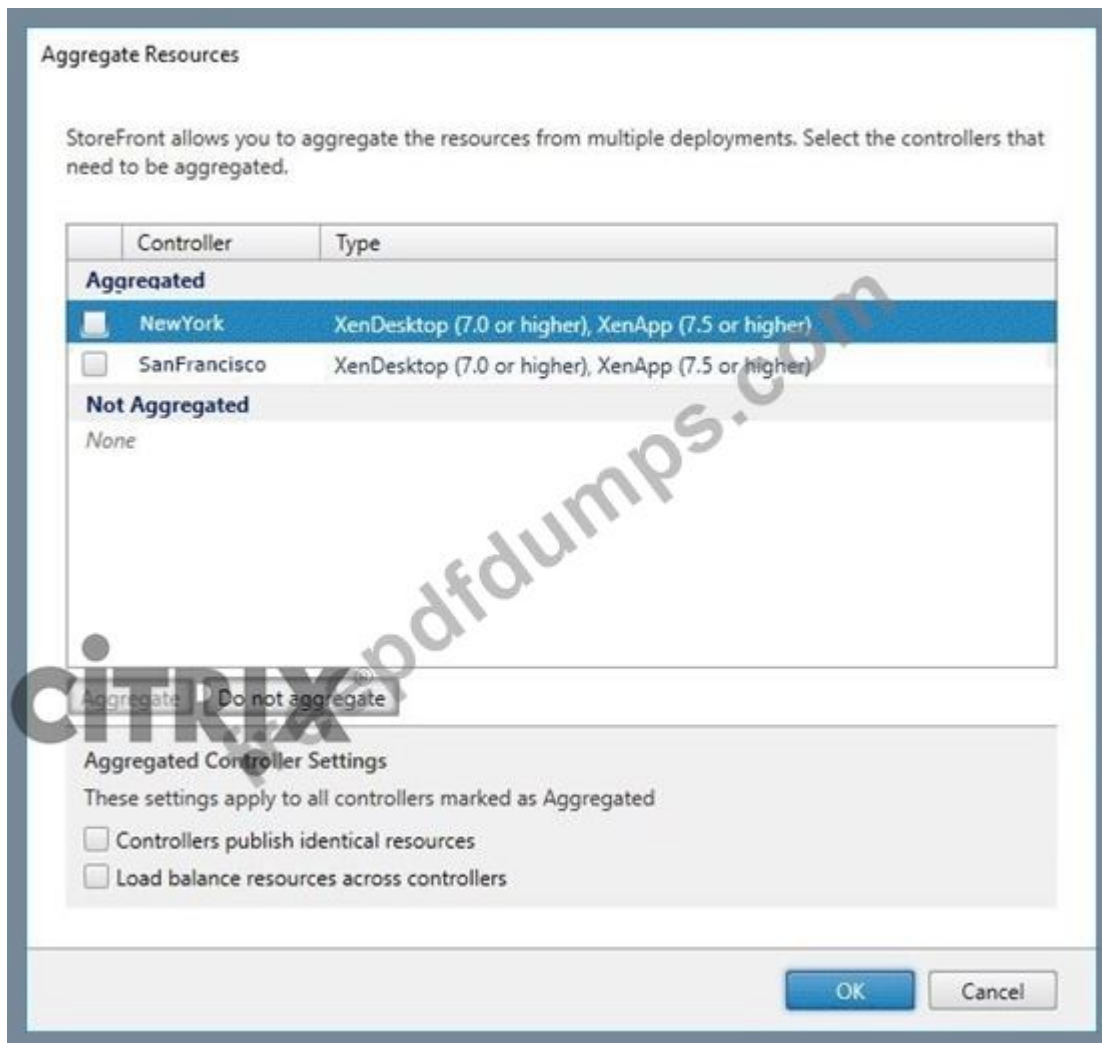
#### **NEW QUESTION: 46**

Scenario: A Citrix Architect is implementing a new XenApp and XenDesktop environment.

The customer has stated the following requirements:

- All users must be able to aggregate resources from all Sites.
  - Both Sites should be treated as one equivalent farm set.
  - User connections should be directed to the New York Site with failover to San Francisco.
- Click the Exhibit button to view the StoreFront configurations.

Exhibit



Based on the configurations, requirement 1 is \_\_\_\_\_, requirement 2 is \_\_\_\_\_, and requirement 3 is \_\_\_\_\_. (Choose the correct option to complete the sentence.)

- A. met; met; NOT met
- B. NOT met; NOT met; NOT met
- C. NOT met; met; NOT met
- D. met; NOT met; NOT met
- E. met; NOT met; met
- F. met; met; met
- G. NOT met; met; met

**Answer: D (LEAVE A REPLY)**

<https://www.citrix.com/blogs/2016/09/07/storefront-multi-site-settings-part-2/>

1. All users must be able to aggregate resources from all Sites.



2. Both Sites should be treated as one equivalent farm set. --- NOT MET

## Aggregated Controller Settings

These settings apply to all controllers marked as Aggregated

- Controllers publish identical resources
- Load balance resources across controllers

CITRIX®

Should be

Checking only the "identical resources" option results in an equivalent farm set with identical sites configured for failover order:

### Aggregated Controller Settings

These settings apply to all controllers marked as Aggregated

- Controllers publish identical resources
- Load balance resources across controllers

CITRIX®

3. User connections should be directed to the New York Site with failover to San Francisco. -

NOT MET

And lastly, leaving both settings unchecked results in an aggregation group with two separate equivalent farm sets:

### Aggregated Controller Settings

These settings apply to all controllers marked as Aggregated

- Controllers publish identical resources
- Load balance resources across controllers

CITRIX®

**Valid 1Y0-403 Dumps** shared by Actual4test.com for Helping Passing 1Y0-403 Exam!

Actual4test.com now offer the **newest 1Y0-403 exam dumps**, the Actual4test.com 1Y0-403 exam **questions have been updated** and **answers have been corrected** get the **newest** Actual4test.com 1Y0-403 dumps with Test Engine here:

[https://www.actual4test.com/1Y0-403\\_examcollection.html](https://www.actual4test.com/1Y0-403_examcollection.html) (244 Q&As Dumps, **30%OFF**)

**Special Discount: Freepdfdumps)**

## NEW QUESTION: 47

Scenario: A Citrix Architect needs to design a new XenApp and XenDesktop environment for a financial services company. During the project kickoff meeting, the organization states the following business priorities:

"Overall, we want a robust solution which ensures that users can access their resources at any time, even if our primary datacenter experiences an outage. Our employees will need to access their resources from both inside and outside our corporate network, but we need to ensure that we enable this in a secure manner and protect our sensitive data." Which four design decisions align with the organization's stated business drivers? (Choose four.)

- A. Redundancy should be implemented for all infrastructure components.
- B. Server OS Virtual Delivery Agent (VDA) machines should be used to increase user density per machine.
- C. Optimal Gateway Routing should be configured on StoreFront.
- D. NetScaler will be required in the environment.
- E. A multi-Site architecture and disaster recovery plan will be required.
- F. Single image management should be included in the design.
- G. SmartAccess or SmartControl features should be considered for this environment.

**Answer: A,D,E,G (LEAVE A REPLY)**

Somebody has an explanation why not taking A instead of B.

They want access their resources at any time, even if the primary datacenter experiences an outage.

I think Redundancy is a must and they dont ask for a cheaper solution.

#### **NEW QUESTION: 48**

Scenario: A Citrix Architect is designing a new infrastructure that will use Citrix Virtual Apps and Desktops to deploy applications in New York, Chicago and Seattle data centers. All 3 data centers will be active simultaneously.

Which feature should the architect recommend to connect the remote users to the closest or best-performing data center?

- A. Global Server Load Balancing
- B. StoreFront Resource Aggregation
- C. Zone Preference and Failover
- D. Optimal Gateway Routing

**Answer: A (LEAVE A REPLY)**

<https://www.citrix.com/blogs/2014/03/29/xendesktop-gslb-dr-everything-you-think-you-know-is-probably-wrong/>

#### **NEW QUESTION: 49**

Scenario: A Citrix Architect must perform a Provisioning Services (PVS) design for a healthcare organization. The initial design places all PVS farm components in the organization's primary datacenter. The customer asks whether the vDisk can be streamed from PVS servers in the primary datacenter to target devices located in a secondary datacenter in another region while maintaining good performance. The datacenters are connected with a 10 GB link with approximately 20 ms of latency.

The architect recommends against the organization pursuing this approach.

Which statement is a relevant reason for the recommendation?

- A. The configuration does NOT provide sufficient bandwidth for streaming traffic.
- B. This configuration does NOT provide sufficient connectivity between the PVS servers and the farm database
- C. This configuration prevents the Subnet Affinity feature from being implemented.
- D. This configuration would include too much latency for the streaming traffic.

Answer: ([SHOW ANSWER](#))

<https://support.citrix.com/article/CTX220651>

If having a global PVS Farm across data centers is required, Citrix recommends additional testing to confirm network performance and reliability, this is especially relevant for networks with higher latency (>15ms). If reliability and performance cannot be guaranteed then it is best to implement multiple PVS farms with local SQL databases for optimal performance and reliability.

<https://www.jgspiers.com/citrix-provisioning-services/>

Latency between VDA and PVS server is important to ensure streaming is not affected. PVS servers should generally be within the same location as each Target Device.

<https://www.citrix.com/blogs/2017/09/25/how-network-latency-impacts-user-experience/>

### NEW QUESTION: 50

A Citrix Architect is designing a new Citrix Virtual Apps and Desktops environment. The IT team maintains 12 Citrix Hypervisor hosts that are available to build the new Citrix environment. During the project kickoff meeting, management states:

"We need a robust infrastructure that can handle large user loads, improve IT efficiency, guarantee minimal downtime, and protect the network and its resources from corruption." Click the Exhibit button to view the existing infrastructure details.

Hardware/Network	Details
Citrix Hypervisors	Heterogeneous hosts use the same software version and patch levels.
Resource: CPU, Memory, etc.	Uses the same CPU vendor and similar CPU models, with each host containing 128 GB RAM. Local storage of 100 GB is available.
Network Storage	Network File System (NFS) is used for file storage. Linux GFS2 shared block storage is used for the hypervisor hosts.
Network	All hosts are on the same subnet, with similar static IP range on the management port.
Virtual Machines (VMs)	Virtual disks are on shared storage. No local DVD drive is configured.

Which configuration should the architect use to meet the requirements for the new Citrix environment?

- A. Create multiple resource pools with at least 3 hosts in each pool for the infrastructure and Citrix workloads, and enable high availability with clustered pools using GFS2 as the heartbeat storage repositories.
- B. Create multiple resource pools with at least 3 hosts in each pool for the infrastructure and Citrix workloads, and enable high availability with clustered pools using local storage repositories.
- C. Create a single resource pool containing all hosts for the infrastructure and Citrix workloads, and enable default high availability using NFS as the heartbeat storage repository.
- D. Create a single resource pool containing all hosts for the infrastructure and Citrix workloads, and enable default high availability using GFS2 as the heartbeat storage repository.

**Answer: A (LEAVE A REPLY)**

**NEW QUESTION: 51**

Scenario: A Citrix Architect is designing a new Citrix Virtual Apps and Desktops environment. The architect's objective is to create a configuration to automatically reroute network traffic to the second NIC within the bond. The goal is to avoid a loss of productivity should the primary Citrix Hypervisor host NIC fail. Each hypervisor currently consists of a single, active 10 GB NIC and a second, dormant 1 GB NIC.

Which two network interface configurations should the architect implement? (Choose two.)

- A. Active-passive (LACP)
- B. Active-active (SLB)
- C. NIC teaming-bonding
- D. Active-active (LACP)

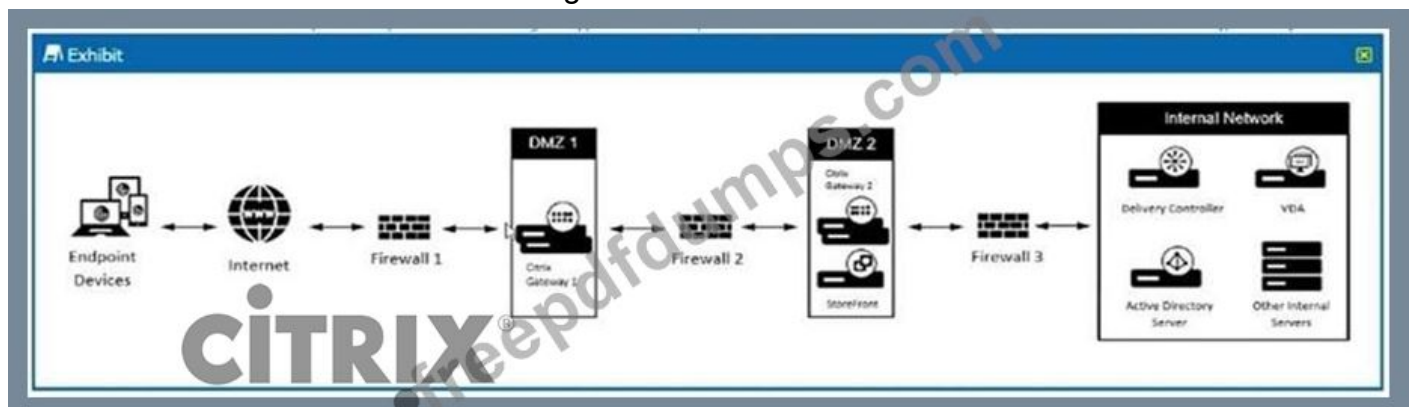
**Answer: (SHOW ANSWER)**

<https://docs.citrix.com/en-us/xencenter/current-release/hosts-network.html>

**NEW QUESTION: 52**

Scenario: A Citrix Architect wants to set up double-hop access for an existing XenApp and XenDesktop Site. All communication across DMZ 1, DMZ 2, and the Internal Network is encrypted over port 443. The architect has proposed the design shown in the Exhibit, where DMZ 1 has NetScaler Gateway 1 and DMZ 2 has NetScaler Gateway 2 and StoreFront.

Click the Exhibit button to view the design.

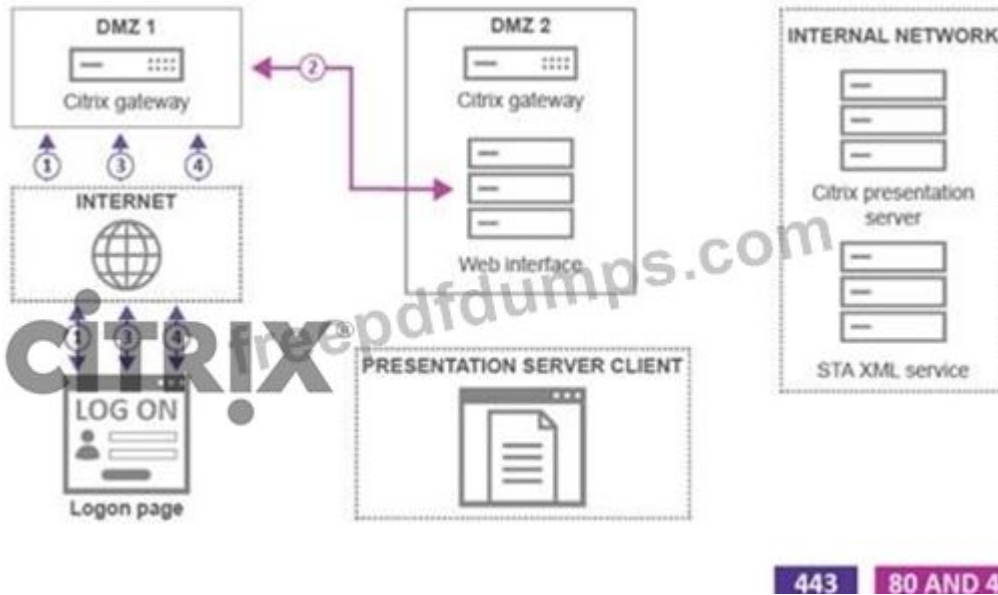


Which two sets of ports should the architect request to enable on Firewall 2?

- A. Port 443 outbound and Port 1494/2598 inbound
- B. Port 443 outbound and Port 80 inbound
- C. Port 443 outbound and Port 443 inbound
- D. Port 443 outbound and Port 389/636 inbound

**Answer: (SHOW ANSWER)**

<https://support.citrix.com/article/CTX113250#deploy1>



**NEW QUESTION: 53**

Scenario: A Citrix Architect needs to design a new XenApp and XenDesktop environment. The following Control Layer security requirements have been identified:

- For security reasons, it is unacceptable to use default ports for FMA Services.
- Access to PowerShell and Citrix Studio for management will be restricted to management workstations by granular firewall rules.
- 

Which command-line interface executable should the architect run to ensure that all Control Layer security requirements are met?

- A. BrokerService.exe VdaPort 8081 WISSLPort 8083 SDKPort 8083 ConfigureFirewall
- B. BrokerService.exe VdaPort 443 WISSLPort 443 SDKPort 443 ConfigureFirewall
- C. BrokerService.exe VdaPort 80 WISSLPort 80 SDKPort 8083 ConfigureFirewall
- D. BrokerService.exe VdaPort 8081 WISSLPort 8082 SDKPort 8083 ConfigureFirewall

**Answer: D (LEAVE A REPLY)**

These are the default ports, so to change to something not default the only option for the 3 services will be D.

```
C:\Program Files\Citrix\Broker\Service>BrokerService.exe /show
SDK Port: 80
UDA Port: 80
MI Port: 80
MI SSL Port: 443
Log File:
```

[http://www.centix.be/p\\_217.htm](http://www.centix.be/p_217.htm)

<https://blog.citrix24.com/xendesktop-how-to-change-used-ports/>

### NEW QUESTION: 54

Scenario: A Citrix Architect is designing a new, 2,000-user XenApp and XenDesktop environment. The environment will use Windows Server 2016 for all Site infrastructure components (Delivery Controllers, StoreFront servers, Provisioning Services servers, Citrix Director). Provisioning Services (PVS) will be used to provision Virtual Delivery Agent (VDA) machines. The environment will include two primary use cases:

- Windows Server 2016 VDA machines providing hosted apps

- Windows 10 VDA machines providing random, non-persistent VDI

Within the company there is existing hardware which is hosting non-Citrix workloads. The hardware, which is using a third party hypervisor, has some spare capacity, but NOT enough to support the entire XenApp and XenDesktop environment. As a result, the IT team is planning to purchase additional hardware to support the expected capacity but has NOT determined which hypervisor will be used for that hardware. The IT team would like to utilize the existing hardware and wants to minimize the long-term costs of the solution while still providing a good user experience.

How should the architect design the hypervisor resource pools based on Citrix leading practice?

**A.** Build new XenServer resource pools and build all XenApp and XenDesktop components in those pools.

**B.** Build new XenServer resource pools and build all VDA machines and PVS servers in those pools.

Build other Citrix infrastructure components in one of the existing third-party clusters.

**C.** Build new XenServer resource pools and build all Windows 10 VDA machines in those pools. Build all Windows Server 2016 components in the existing third-party clusters.

**D.** Build new third-party clusters and build all XenApp and XenDesktop components in those clusters.

**E.** Build new third-party clusters and build all VDA machines and PVS servers in those clusters. Build other Citrix infrastructure components in one of the existing third-party clusters.

**F.** Build new third-party clusters and build all Windows 10 VDA machines in those clusters. Build all Windows Server 2016 components in the existing third-party clusters.

**Answer: C,E ([LEAVE A REPLY](#))**

### NEW QUESTION: 55

Scenario: A Citrix Architect needs to implement Citrix Virtual Apps and Desktops. Based on the assessment and early stages of the design, the requirements in the exhibit have been identified. Click the Exhibit button to view the requirements.

Requirement	Detail
Number of Users	5,000
Environment	Production
Redundancy	Highly available
Administrative Team	Highly skilled IT teams
Level of Performance	High
Image Management	Citrix Provisioning (PVS)/non-persistent Machine Creation Services (MCS)/persistent
Additional Considerations	Dedicated network infrastructure required

Which tier of storage should the architect consider implementing, based on the requirement?

- A. DAS
- B. Local
- C. NAS
- D. SAN

Answer: ([SHOW ANSWER](#))

#### NEW QUESTION: 56

Which access component will support anonymous access within a new environment?

- A. Citrix StoreFront
- B. Citrix Gateway Service
- C. Citrix ADC
- D. Citrix Workspace

Answer: A ([LEAVE A REPLY](#))

Explanation/Reference: <https://docs.citrix.com/en-us/xenapp-and-xendesktop/7-6-long-term-service-release/xad-build-new-environment/xad-dg-create/xad-dg-manage-users.html>

#### NEW QUESTION: 57

Scenario: An IT department moved its entire infrastructure to Microsoft Azure. It is utilizing multiple Azure regions for redundancy. It also uses all Azure regions as resource locations within Citrix Virtual Apps and Desktops Service in Citrix Cloud.

Which storage replication option will allow data to be read from both the primary and secondary locations?

- A. Locally redundant storage (LRS)
- B. Read-access geo-redundant storage (RA-GRS)
- C. Zone-redundant storage (ZRS)
- D. Geo-redundant storage (GRS)

Answer: D ([LEAVE A REPLY](#))

#### NEW QUESTION: 58

Scenario: A Citrix Architect designing a new Citrix Virtual Apps and Desktops environment needs to determine which endpoints to include. Based on discussions with various departments, the user requirements listed in the exhibit were collected.

Click the Exhibit button to view the requirements.

User Group	Typical Location	User Type	Peripheral Requirements	User Mobility	Local Storage Needed?	Resources Used	User Workload
Customer Service	Internal	Task Worker	USB Printers and Scanners	None	Yes	Data Entry Apps	High
IT Department	Roaming	Knowledge Worker	USB Printers	Medium	Yes	Departmental Published Apps	High
Marketing	Internal	Knowledge Worker	Projectors	Low	No	Hosted Desktop	Medium

Which endpoint type should the architect use for the Customer Service Group, based on the requirements?

- A. Phones
- B. Thin clients
- C. Tablets
- D. Multi-monitor workstations
- E. Desktops

**Answer:** ([SHOW ANSWER](#))

#### NEW QUESTION: 59

Scenario: A Citrix Architect needs to design a new XenApp and XenDesktop environment. The customer previously installed all applications locally on managed laptops and desktops but is willing to evaluate other application delivery methods as part of the new deployment. The environment will be standardized on Windows 10 and Windows Server 2016 for the Virtual Delivery Agent (VDA) machines.

As part of an application analysis performed earlier in the project, the information in the Exhibit was collected regarding one of the required applications.

Click the Exhibit button to view the information.

Category	Detail
Application Name	Workspace Lidar Analyzer
Description	The application processes and generates reports using large amounts of imaging data collected from a Lidar scanner attached to the user endpoint.
Usage	The application is used by five technicals in the R&D department.
OS Compatibility	The application is compatible with the target operating systems.
Special Considerations	<p>The technicians must frequently reference the data presented by the application when making log entries on a different application that, for security reasons, is only available to them via a virtual desktop session.</p> <p>The technicians must occasionally conduct outdoor field experiments with the Lidar scanner and must connect to the environment using a wireless mobile connection.</p>

The customer has an additional objective to minimize the number of network traffic in the environment, particularly on WAN or metered links.

How should the architect install the application?

- A. Directly on endpoint devices and included in a virtual desktop session using the Local App Access feature
- B. Directly on a VDA machine image and accesses through a virtual desktop session
- C. Directly on a Server OS VDA machine and accessed from the endpoint as a published application
- D. Stream it to a VDA machine using Microsoft App-V and accessed through a virtual desktop session
- E. In the Application Layer using Citrix App Layering

**Answer: A (LEAVE A REPLY)**

Note: since the techs must occasionally conduct outdoor field experiments with the lidar scanner and connect to the env. using wireless mobile connection the APP needs to be installed on the end point.

### NEW QUESTION: 60

Scenario: A Citrix Architect is designing a new Citrix Virtual Apps and Desktops environment. The environment consists of 4 Citrix Hypervisor hosts, each running 10 virtual machines (VMs). To meet company security standards for the environment, the IT team will need to perform routine VM snapshots, data backups, and threat scans.

Which two matters should the architect consider when securing a backup plan for the company? (Choose two.)

- A. Administrative access to the storage location that maintains backups and archived data should be monitored

- B. There are various delegated administrator roles that will have permissions to perform VM snapshots
- C. RAID technology is supported for secure VM backups and snapshots when using local host storage
- D. VM snapshots and data backups are NOT required for backup purposes if an enterprise-grade, geo-replicated, high-security storage solution is deployed
- E. Running simultaneous security scans on different VMs can reduce host resource utilization

**Answer: D,E (LEAVE A REPLY)**

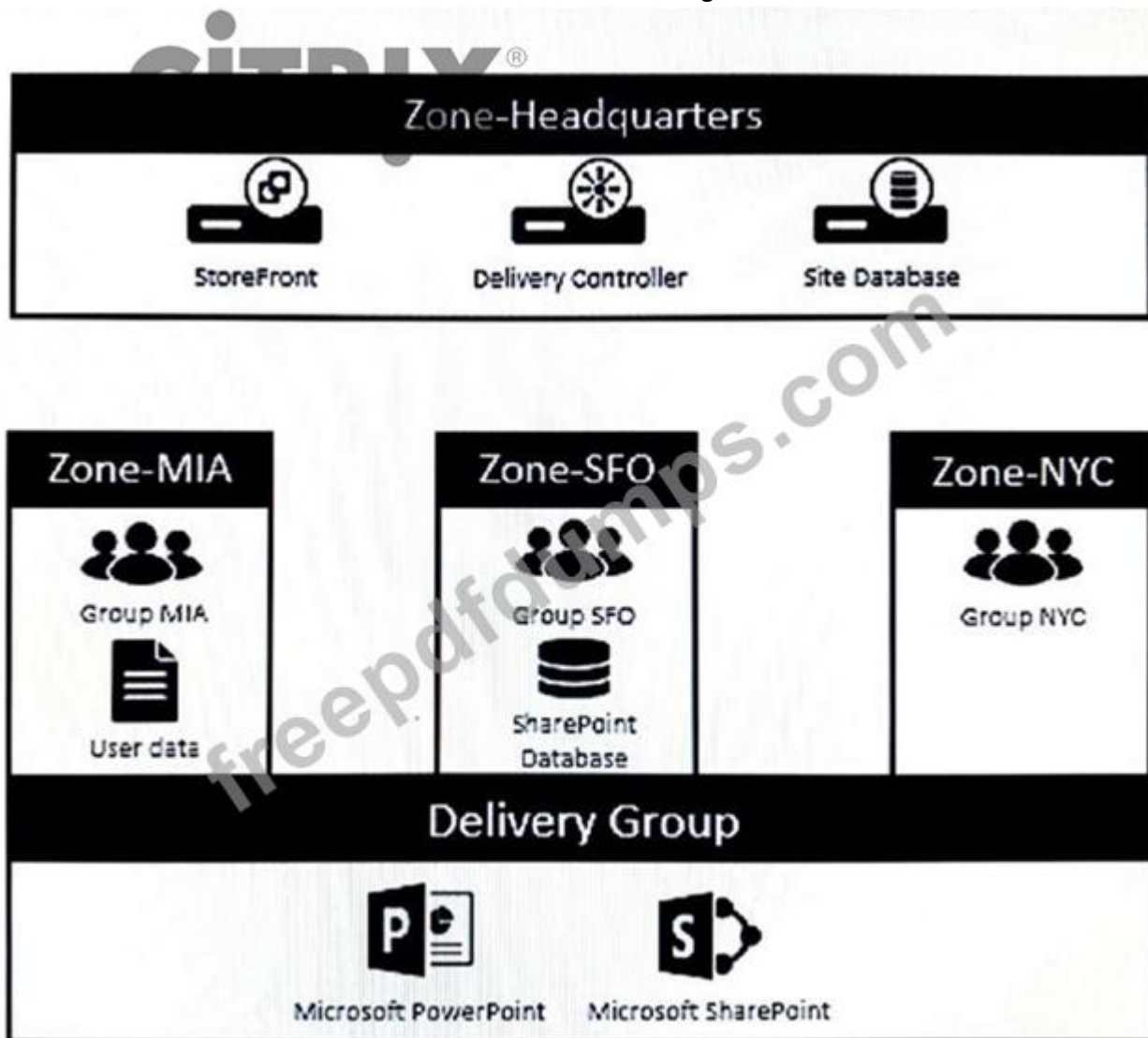
Explanation/Reference:

Reference: <https://www.vmware.com/products/vsphere/data-protection.html>

**NEW QUESTION: 61**

Scenario: A Citrix Architect needs to design a new XenApp and XenDesktop environment. The design has a primary zone and three satellite zones. Each satellite zone has a number of Virtual Delivery Agent (VDA) machines that belong to a single Delivery Group spanning across all three satellite zones.

Click the Exhibit button for more details about the configuration.



How should the architect ensure that when users from Group SFO launch Microsoft PowerPoint, they are able to work with the least amount of latency on documents in the "User data" folder?

- A. Edit the zone properties to only allow Microsoft PowerPoint to launch in Zone-MIA
- B. Set the application home zone to Zone-MIA
- C. Publish Microsoft PowerPoint to only run from Zone-SFO
- D. Create a Citrix policy to define bandwidth limitations for sessions to Zone-SFO

**Answer: B (LEAVE A REPLY)**

**Valid 1Y0-403 Dumps** shared by Actual4test.com for Helping Passing 1Y0-403 Exam!

Actual4test.com now offer the **newest 1Y0-403 exam dumps**, the Actual4test.com 1Y0-403 exam **questions have been updated** and **answers have been corrected** get the **newest** Actual4test.com 1Y0-403 dumps with Test Engine here:

[https://www.actual4test.com/1Y0-403\\_examcollection.html](https://www.actual4test.com/1Y0-403_examcollection.html) (244 Q&As Dumps, **30%OFF**

**Special Discount: Freepdfdumps)**

#### **NEW QUESTION: 62**

Scenario: A large retail environment includes a StoreFront server group with 2 servers, each with 2 vCPUs and 4 GB of RAM. The server group handles about 25,000 user connections per hour, with the majority of users accessing the environment using the Citrix Workspace app. Workspace Control has been disabled for the environment.

A Citrix Architect learns that the company will soon merge with another retail chain. The Citrix Virtual Apps and Desktops environment must double its capacity, and the StoreFront server group is expected to handle about 40,000 user connections per hour.

What should the architect do to meet the expected load while maintaining high availability with optimal resource allocation for the StoreFront component?

- A. Allocate an additional 2 vCPUs to each existing StoreFront server.
- B. Enable Workspace Control for all StoreFront stores.
- C. Allocate an additional 2 GB of RAM to each existing StoreFront server.
- D. Train users to begin accessing the environment using Citrix Workspace app for Web site.
- E. Use the least connection method for load-balancing on Citrix ADC.

**Answer: (SHOW ANSWER)**

Explanation/Reference: <https://docs.citrix.com/en-us/tech-zone/design/reference-architectures/virtual-apps-and-desktops-service.html>

#### **NEW QUESTION: 63**

Scenario: A Citrix Architect is designing a new Citrix Virtual Apps and Desktops environment. During the assessment, the architect determined the applications and characteristics.

Click the Exhibit button to view the list of applications and characteristics.

Application	Users	Deployment	Complexity	Resource Requirement	Peripheral Requirements
Application 1	Samantha and Robert	App Layer	High	Medium	Yes
Application 2	Human Resources (HR) Group	App-V	Low	Low	No
Application 3	Domain Users	Master Image	High	Medium	Yes
Application 4	Sales Group	Web App	Low	Low	No

To which application category does Application 1 belong, based on the information in the exhibit?

- A. User
- B. Departmental
- C. Common
- D. Management

Answer: ([SHOW ANSWER](#))

#### NEW QUESTION: 64

Scenario: A Citrix Architect is designing a new Citrix Virtual Apps and Desktops Service environment in Citrix Cloud. The customer previously installed all applications locally on managed laptops and desktops, but is willing to evaluate other application delivery methods as part of the new deployment. The environment will be standardized on Windows 10 and Windows Server 2016 for the Virtual Delivery Agent (VDA) machines.

As part of an application analysis performed earlier in the project, the information in the exhibit was collected regarding 1 of the required applications.

Click the Exhibit button to view the information.

Category	Detail
Application Name	Workday
Description	Workday is an on-demand (web-based) financial management and human capital management application.
Usage	The application will be used by most employees in the organization.
OS Compatibility	The application is compatible with the target operating systems.
Special Considerations	Users must be subscribed to the application.  To manage security, the application must be hosted and managed by another vendor and provided to the end user.

The customer has the additional objective of minimizing authentication cycles for users with no configuration efforts on user machines.

How should the architect publish the application?

- A. Through the Citrix Gateway Service as a Web/SaaS application
- B. From Citrix Virtual Apps and Desktops Service
- C. Through Citrix Gateway as a Web/SaaS application
- D. As a streamed application using Microsoft App-V

Answer: ([SHOW ANSWER](#))

#### NEW QUESTION: 65

Scenario: The IT team of a company needs to mitigate the Hardware Layer to Microsoft Azure. The Virtual Delivery Agent (VDA) machines are manually provisioned within Microsoft Azure. The IT team asks a Citrix Architect for a solution for high availability of existing VDA machines in a single Azure data center. The objective is to be proactive about any hardware failure at Microsoft Azure, so that all virtual machines (VMs) will NOT be affected.

What should the architect recommend the IT team create in Microsoft Azure?

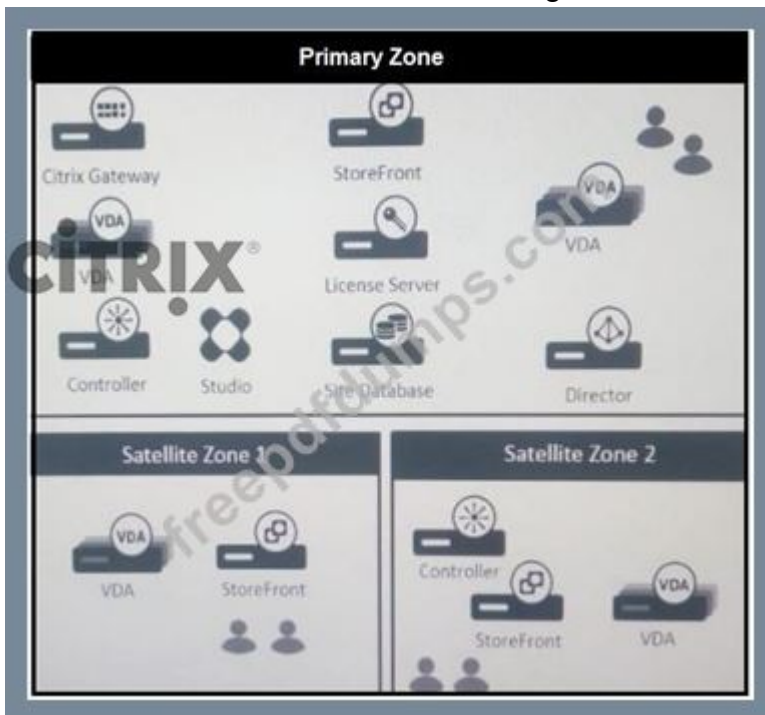
- A. Resource group
- B. Availability sets with fault domain
- C. Availability zones
- D. Availability sets with update domain

**Answer: C (LEAVE A REPLY)**

### NEW QUESTION: 66

Scenario: A Citrix Architect needs to access a XenApp and XenDesktop environment. The XenApp and XenDesktop diagram in the Exhibit gives details about the current Site and Zone design.

Click the Exhibit button to view the diagram.



Which statement is correct if all the Delivery Controllers in Satellite Zone 2 fail?

- A. Virtual Delivery Agent (VDA) machines in Zone 2 will register within the Primary Zone.
- B. Virtual Delivery Agent (VDA) machines in Satellite Zone 2 will NOT register
- C. Virtual Delivery Agent (VDA) machines will register using the Local Host Cache
- D. Virtual Delivery Agent (VDA) machines in Zone 2 will register within Satellite Zone 1.

**Answer: A (LEAVE A REPLY)**

### NEW QUESTION: 67

Scenario: After a recent security assessment, a Citrix Architect recommends blocking unnecessary peripheral types by disabling the associated HDX channels. Currently, the environment is intended to support the peripheral types listed in the Exhibit. Click the Exhibit button to view the supported peripheral types.

Allowed Peripherals	Prohibited Peripherals
<ul style="list-style-type: none"> <li>- Keyboard</li> <li>- Standard mouse</li> <li>- Headsets (headphones &amp; microphone)</li> <li>- Smart cards</li> <li>- Printers</li> </ul>	<ul style="list-style-type: none"> <li>- Webcams</li> <li>- USB memory sticks</li> <li>- Endpoint drives</li> <li>- Scanners</li> <li>- Any additional specialized peripherals that have NOT been approved for inclusion</li> </ul>

Which four HDX virtual channels should the architect disable, based on the peripherals required in the environment? (Choose four.)

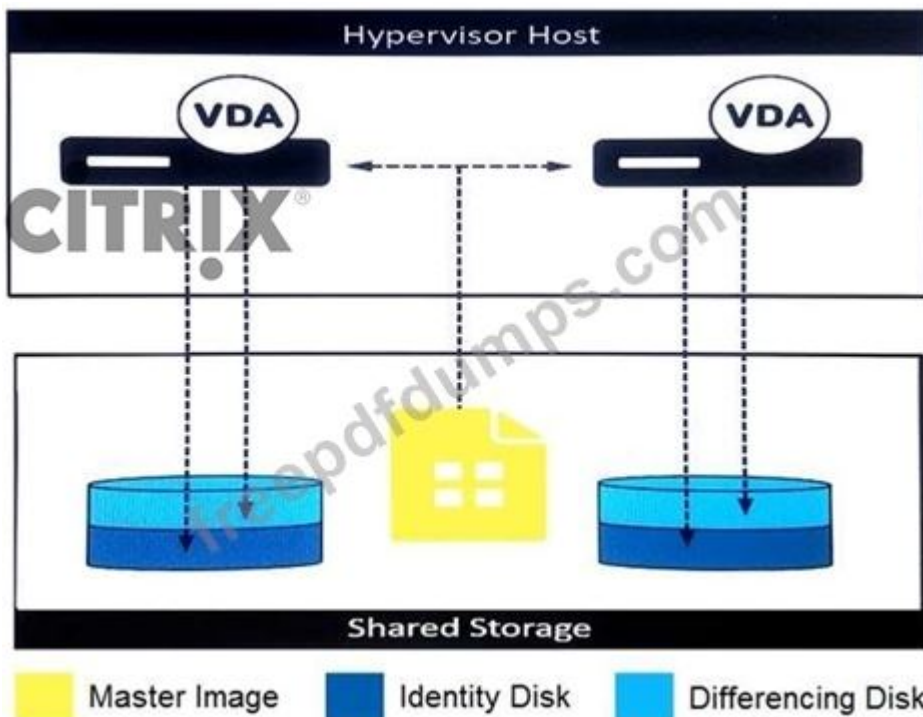
- A. Multimedia
- B. TwainRdr
- C. ClientDrive
- D. Print
- E. TWI
- F. ClientAudio

Answer: ([SHOW ANSWER](#))

**NEW QUESTION: 68**

Scenario: A Citrix Architect is redesigning a Citrix Virtual Apps and Desktops environment to include Machine Creation Services (MCS). During design discussions, the locations for the MCS-provisioned thin clone machine disks are proposed as shown in the exhibit.

Click the Exhibit button to view the details.



Which two potential issues should the architect address with the customer before proceeding with this configuration? (Choose two.)

- A. It will require substantial write IOPS to the shared storage location as temporary data is written.
- B. It is limited to NFS shared storage.
- C. It will require more storage to be allocated on the virtual machine (VM) hosts compared with other options.
- D. It will require substantial read IOPS from the shared storage location during machine creation and updates.
- E. It is limited to certain hypervisors.

Answer: ([SHOW ANSWER](#))

**NEW QUESTION: 69**

Scenario: A Citrix Architect is designing a XenDesktop environment. The Engineer group uses graphical applications which require the use of AMD hardware shared virtualized GPU. Which two hypervisors can the architect select? (Choose two.)

- A. XenServer 6.5
- B. VMware vSphere 5.5
- C. XenServer 7.0
- D. VMware vSphere 6.0
- E. Microsoft Hyper-V Server 2012 R2

Answer: ([SHOW ANSWER](#))

<https://docs.citrix.com/en-us/xenapp-and-xendesktop/7-15-ltsr/downloads/handbook-715-ltsr.pdf>

	GPU Through GPU	Hardware Virtualized GPU (NVIDIA)	Hardware Virtualized GPU (Intel)	Hardware Virtualized GPU (AMD)	Software Emulated GPU
<b>Citrix XenServer</b>					
XenDesktop	✓	✓	✓	✗	✓
XenApp	✓	✓	✓	✗	✓
<b>Microsoft Hyper-V</b>					
XenDesktop	✓	✗	✗	✗	✓
XenApp	✓	✗	✗	✗	✓
<b>VMware vSphere</b>					
XenDesktop	✓	✓	✗	✓	✓

page 92



**NEW QUESTION: 70**

Scenario: During an assessment, a Citrix Architect is asked to review a Citrix policy setting that is NOT being applied as intended. The policy was intended to allow any user from the Managers

group who is accessing Virtual Delivery Agent (VDA) machines within the "Win2012 Desktops" Delivery Group to access local client drives from within the HDX session.

However, testing verifies that users from the Managers group are NOT able to view their endpoint's drives from within their session. While verifying the policy settings, the architect notes several misconfigurations.

Click the Exhibit button to view information collected by the architect during the investigation.

Issue	Description
Policy engine usage	An "Allow client fixed drives access" Citrix policy was configured in both Citrix Studio and within an Active Directory Group Policy.
Policy priority	In Citrix Studio, the "Allow client fixed drives access" policy was given priority number 8. A baseline policy including settings from the Security and Control template was given priority 1.  In Active Directory, within the GPO containing Citrix policies, the "Allow client fixed drives access" policy was given priority number 1. A baseline policy including settings from the High Server Scalability template was given priority 8.
Policy scope	In Citrix Studio, the "Allow client fixed drives access" policy was applied to the "Win2012 Desktops" Delivery Group.  In Active Directory, within the GPO containing Citrix policies, the "Allow client fixed drives access" policy was applied to the Managers group.
Policy processing	In Active Directory, a GPO with Loopback Policy Processing was set to "Enabled" and in "Replace" mode was linked to the OU containing the Delivery Controllers.
Policy placement	In Active Directory, the GPO containing Citrix policies was linked to the OU containing the Virtual Delivery Agent machines.

Which action would permit the "Allow client fixed drives access" policy to apply to the Managers group?

- A. Add a security filter to the GPO containing Citrix policies in the Group Policy Management Console.
- B. Change the assignment of the policy in Citrix Studio.
- C. Change the priority of the policy in Citrix Studio.
- D. Change the link location for the Loopback processing GPO in the Group Policy Management Console.

**Answer: (SHOW ANSWER)**

The policy for loopback processing mode needs to apply to the machines with the VDA, not the controllers.

### NEW QUESTION: 71

Scenario: A Citrix Architect is designing a new Citrix Virtual Apps and Desktops environment. Based on some initial discussions about the business goals and objectives of the company, the architect collected the information shown in the exhibit.

Click the Exhibit button to view the information.

Category	Detail
Application Name	HealthApp
Description	The application is an electronic medical recording (EMR) solution for large hospitals and healthcare systems. HealthApp has its own authentication engine to control access to sensitive data.
Usage	The application will be used by all employees in the organization.
OS Compatibility	The application is compatible with the Virtual Desktop Access (VDA) operating systems.
Special Considerations	All users will access HealthApp from non-domain, joined kiosk devices. Session reconnection and session roaming capabilities are NOT required.

What should the architect recommend to meet customer requirements?

- A. Have users connect to an authenticated store through the Citrix Virtual Apps Services URL.
- B. Have users connect to an authenticated store through Citrix Workspace app for Web sites.
- C. Have users connect to an unauthenticated store through the Citrix Workspace app for Web sites.
- D. Have users connect using a Desktop Appliance site created in the StoreFront console.

**Answer: A (LEAVE A REPLY)**

#### NEW QUESTION: 72

Scenario: A Citrix Architect is designing a Citrix Virtual Desktops environment. The Graphic Designers Group uses graphic-intensive applications. Graphic designers will be provided with a Windows 10-hosted assigned desktop, with NVIDIA graphics hardware acceleration. HDX 3D Pro mode was selected during the installation of the Virtual Delivery Agent (VDA).

What is the maximum number of monitors supported for the Graphic Designers Group?

- A. 1
- B. 2
- C. 8

<https://support.citrix.com/article/CTX201696>

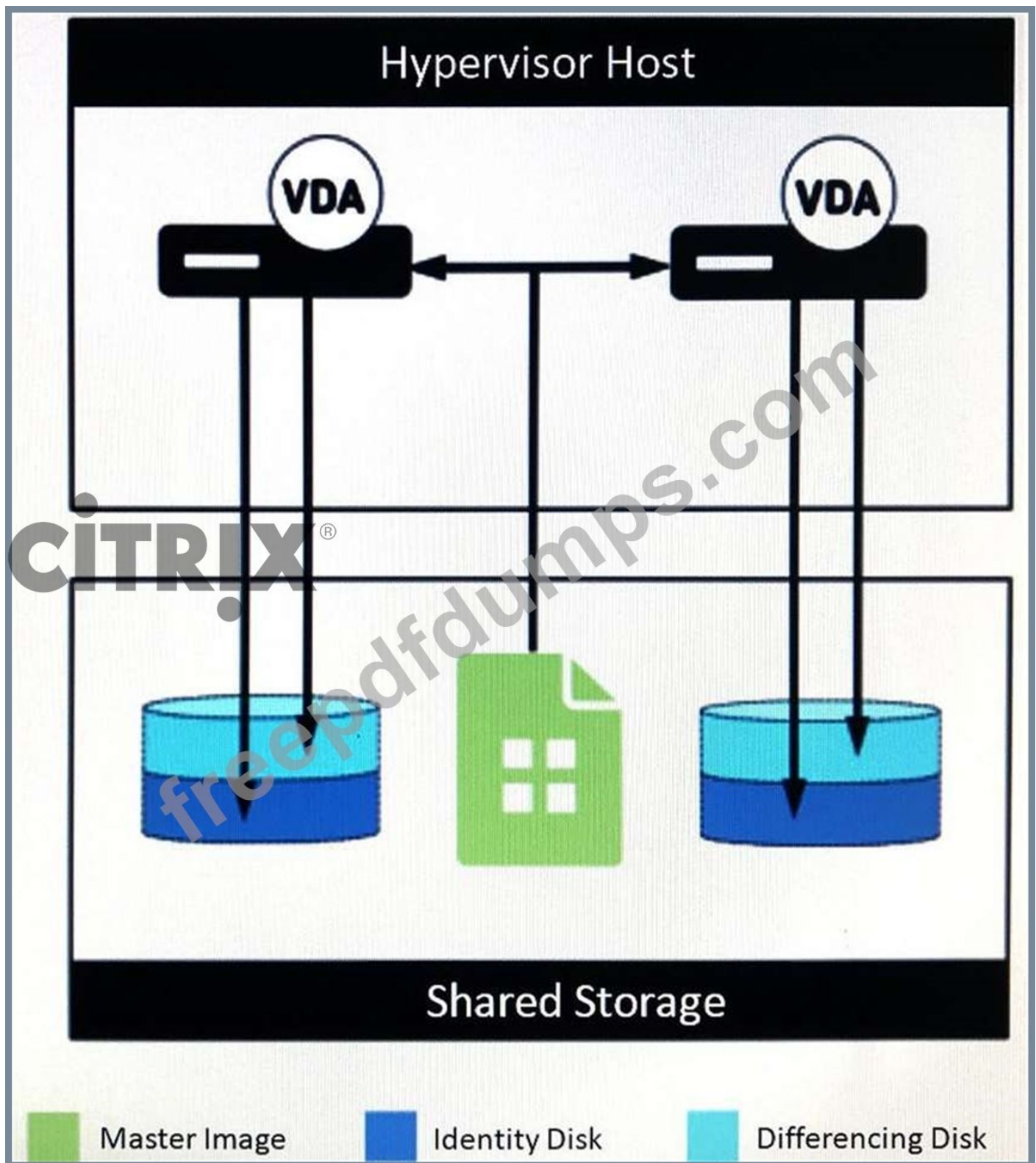
- D. 4

**Answer: D (LEAVE A REPLY)**

#### NEW QUESTION: 73

Scenario: A Citrix Architect needs to redesign an existing XenApp and XenDesktop environment to use Machine Creation Services (MCS). During the design discussions, the locations for the MCS-provisioned thin clone machine disks are proposed as shown in the Exhibit.

Click the Exhibit button to view the details.



Which potential concern should the architect address with the customer before proceeding with this configuration? (Choose two.)

- A. It is limited to NFS shared storage.
- B. It will require substantial read IOPS from the shared storage location during machine creation and updates.
- C. It will require substantial write IOPS to the shared storage location as temporary data is written.
- D. It will require more storage to be allocated on the VM hosts compared with other options.

E. It is limited to certain hypervisors.

**Answer: (SHOW ANSWER)**

Consider your underlying and supported Hypervisor when using MCS. For example, you can use NFS for XenServer and ESXi or clustered shared volumes for Hyper-V. However, No thin provisioning on XenServer with block based storage.

### NEW QUESTION: 74

Scenario: A Citrix Architect is creating a conceptual architecture for a Citrix Virtual Apps and Desktops environment. Based on some initial discussions around the company's business goals and objectives, the architect collected the information shown in the exhibit.

Click the Exhibit button to view the information.

Requirement	Detail
Number of Users	500
Data Centers	None
Available Hardware	No hardware was procured by the Information Technology (IT) team
Administrative Team	One dedicated Citrix Administrator is responsible for both Windows and Citrix troubleshooting and change tickets
Level of Desired Control	Basic
Additional Considerations	Consulting users mostly travel and connect from offsite locations using tablets. <b>CITRIX</b> Other department users connect using bring-your-own devices (BYODs)

Which delivery model should the architect recommend?

- A. Single-Site in Citrix Cloud, with resources hosted in public cloud
- B. Multi-Site in Citrix Cloud, with resources hosted in public cloud
- C. Single-Site, single-zone, and single on-premises data center
- D. Multi-Site, and single on-premises data center

**Answer: C (LEAVE A REPLY)**

### NEW QUESTION: 75

Scenario: A Citrix Architect is designing a multi-data center Citrix Virtual Apps and Desktops environment that will use Citrix Provisioning (PVS) to manage Virtual Delivery Agent (VDA) machine images. Each data center will have a separate PVS farm. During design discussions, the architect created a diagram to depict the way in which vDisk files will be replicated among PVS farms, based on the available storage for the vDisk stores.

Click the Exhibit button to view the diagram.



Overall, the customer has identified 3 objectives for the image-replication process:

- \* Administrative time required to replicate images among farms must be minimized.
- \* The process must be usable by storage administrators without PVS farm administrative permissions.
- \* Pre-existing infrastructure and processes should be used where possible.

Which method should the architect use to replicate vDisk files among data centers?

- A. vDisk Replicator Utility
- B. Manual copy
- C. Microsoft Distributed File System Replication (DFSR) Namespaces
- D. Scheduled RoboCopy commands
- E. SAN replication

**Answer: E ([LEAVE A REPLY](#))**

### NEW QUESTION: 76

Scenario: A Citrix Architect is creating a conceptual architecture for a Citrix Virtual Apps and Desktops environment. Based on some initial the company's business goals and objectives, the architect has collected the information shown in the exhibit.

Click the Exhibit button to view the information.

Requirement	Detail
Number of Users	2,000
Data Centers	One on-premises data center
Available Hardware	Available hardware is limited, as all servers are in use at nearly full capacity.
Administrative Team	Three dedicated Citrix Administrators will be supported by the IT team members who are mostly at full capacity with maintenance and change tickets.
Level of Desired Control	Basic
Additional Considerations	The new solution should be highly available, where possible, and within a responsible financial budget.

Which delivery model should the architect recommend?

- A. Single-Site in Citrix Cloud, public cloud, and on-premises resource locations
- B. Multi-Site, multi-zone, and multiple on-premises data centers
- C. Multi-Site in Citrix Cloud, and multiple public cloud resource locations
- D. Single-Site, single-zone, and single on-premises data center

**Answer: ([SHOW ANSWER](#))**

Explanation/Reference:

**Valid 1Y0-403 Dumps** shared by Actual4test.com for Helping Passing 1Y0-403 Exam!

Actual4test.com now offer the **newest 1Y0-403 exam dumps**, the Actual4test.com 1Y0-403 exam **questions have been updated** and **answers have been corrected** get the **newest** Actual4test.com 1Y0-403 dumps with Test Engine here:

[https://www.actual4test.com/1Y0-403\\_examcollection.html](https://www.actual4test.com/1Y0-403_examcollection.html) (244 Q&As Dumps, **30%OFF**

**Special Discount: Freepdfdumps**)

### **NEW QUESTION: 77**

Scenario: A Citrix Architect needs to manage the disaster recovery (DR) process for a Citrix Virtual Apps and Desktops environment. The environment currently consists of an active data center typically accessed by users, and a DR data center used in the event that a disaster impacts the primary data center. Each data center hosts a separate Citrix Virtual Apps and Desktops Site. The overall environment has been designed to actively replicate user data and application data from the primary data center to the DR data center using Microsoft Distributed File System Replication (DFSR). Management has made it a priority to minimize the loss of data when failing over between data centers.

The primary data center suffers an outage that affects multiple components. As a result, management decides to fail over to the DR data center. The architect has blocked access to the primary data center to prevent new attempts to connect to its Citrix Virtual Apps and Desktops Site.

Which two actions must the architect perform to meet company priorities before enabling access to the DR data center? (Choose two.)

- A. Transport backup data repositories to the DR data center.
- B. Drain existing sessions from the primary data center.
- C. Evaluate the condition of the Citrix Virtual Apps and Desktops environment in the primary data center.
- D. Complete data replication from the primary data center to the DR data center.
- E. Replicate the Site's SQL database backups to the DR data center.

**Answer: B,D (LEAVE A REPLY)**

### **NEW QUESTION: 78**

Scenario: A Citrix Architect needs to design a new XenApp and XenDesktop environment.

Currently, the environment is configured with two locations with identical XenDesktop Sites. Each Site has two Delivery Controllers, two StoreFront servers, and one NetScaler high availability pair. The same applications have been published from both Sites for all the users. Two Zones (Zone A and Zone B) are configured in each Site with one Controller in each zone. The Microsoft Exchange server is only accessible from Virtual Delivery Agent (VDA) machines in Zone A in each Site.

The following access requirements have been identified:

- Users should have a single URL when accessing resources from different Sites.
- Users should always connect to the datacenter closest to their location.
- Applications added to Favorites within Citrix Receiver should be retained when accessed from different Sites.
- Launched applications and desktops should always connect through a local NetScaler.
- No duplication of applications published from different Sites.
- Microsoft Outlook should always launch in Zone A.

In which mode should the architect recommend configuring Global Server Load Balancing (GSLB) to ensure that a user always connects to the datacenter closest to their location?

- A.** Source IP hash
- B.** Dynamic RTT
- C.** Least response time
- D.** Static Proximity

**Answer: (SHOW ANSWER)**

<https://support.citrix.com/article/CTX130154>

When configuring NetScaler GSLB to use the client proximity, you can choose one of the following proximity methods:

Static Proximity

Dynamic Proximity

<https://docs.citrix.com/en-us/netscaler/11-1/gslb/configure-gslb-proximity.html> Configuring Static Proximity The static proximity method for GSLB uses an IP address-based static proximity database to determine the proximity between the client's local DNS server and the GSLB sites. The NetScaler appliance responds with the IP address of a site that best matches the proximity criteria.

If two or more GSLB sites at different geographic locations serve the same content, the NetScaler appliance maintains a database of IP address ranges and uses the database for decisions about the GSLB sites to which to direct incoming client requests.

Configuring Dynamic Method (RTT)

Dynamic round trip time (RTT) is a measure of time or delay in the network between the client's local DNS server and a data resource. To measure dynamic RTT, the NetScaler appliance probes the client's local DNS server and gathers RTT metric information. The NetScaler then uses this metric to make its load balancing decision. Global server load balancing monitors the real-time status of the network and dynamically directs the client request to the data center with the lowest RTT value To configure GSLB for proximity with dynamic method, you must first configure the basic GSLB set up and then configure dynamic RTT.

To guarantee closest to their location static with a geolocation database.

18. If this is active/active GSLB, you can edit the **Method** section to enable **Static Proximity**. This assumes the Geo Location database has already been installed on the appliance.

The screenshot shows a configuration window titled 'Method'. It contains two dropdown menus. The first, labeled 'Choose Method\*', has 'STATICPROXIMITY' selected. The second, labeled 'Backup Method\*', has 'LEASTCONNECTION' selected. A mouse cursor is pointing at the 'LEASTCONNECTION' option. A large 'CITRIX' watermark is visible over the right side of the image.

<https://www.carlstalhood.com/global-server-load-balancing/comment-page-1/> If you want to use DNS Policies or Static Proximity GSLB Load Balancing or Responders based on user's location, import a geo location database.

<https://www.carlstalhood.com/global-server-load-balancing/comment-page-1/#geolocation>

**NEW QUESTION: 79**

Scenario: A Citrix Architect needs to design a new Citrix Virtual Apps and Desktops environment. Click the Exhibit button to view information collected by the architect during the Resource Layer discussions.

Category	Detail
Active Directory (AD) Permissions	Only the AD team has domain administrator permissions, but the Citrix Administrative team is provided with delegated administrative access to Citrix-dedicated organizational units (OUs).
User Profile Type	Citrix Profile Management will be used.
Security Considerations	Virtual Delivery Agent (VDA) machines should receive additional lockdown settings that are NOT currently being applied elsewhere in the environment.
Other Requirements	The Citrix Administrator wants to centralize management of policy settings and ensure that Citrix policies have priority.  The administrator does NOT want additional software components installed on user desktops.

Based on the requirements, the Citrix Administrative team should use \_\_\_\_\_ to manage Citrix policies and \_\_\_\_\_ to manage Microsoft settings. (Choose the correct option to complete the sentence.)

- A. Citrix Studio; Local policies
- B. Active Directory Group Policy Objects; Active Directory Group Policy Objects
- C. Active Directory Group Policy Objects; Workspace Environment Manager
- D. Citrix Studio; Active Directory Group Policy Objects
- E. Citrix Studio; Workspace Environment Manager

**Answer: B (LEAVE A REPLY)**

**NEW QUESTION: 80**

Scenario: A Citrix Architect needs to design a new XenApp and XenDesktop environment. Currently, the environment is configured with two locations with identical XenDesktop Sites. Each Site has two Delivery Controllers, two StoreFront servers, and one NetScaler high availability pair.

The same applications have been published from both Sites for all the users. Two Zones (Zone A and Zone B) are configured in each Site with one Controller in each zone. The Microsoft Exchange server is only accessible from Virtual Delivery Agent (VDA) machines in Zone A in each Site.

The following access requirements have been identified:

▪ Users should have a single URL when accessing resources from different Sites.

▪ Users should always connect to the datacenter closest to their location.

▪ Applications added to Favorites within Citrix Receiver should be retained when accessed from different Sites.

▪ Launched applications and desktops should always connect through a local NetScaler.

▪ No duplication of applications published from different Sites.

▪ Microsoft Outlook should always launch in Zone A.

How should the architect recommend configuring subscription sync to retain the applications added to Favorites?

A. Between stores across the Sites

B. Between server groups across the Sites

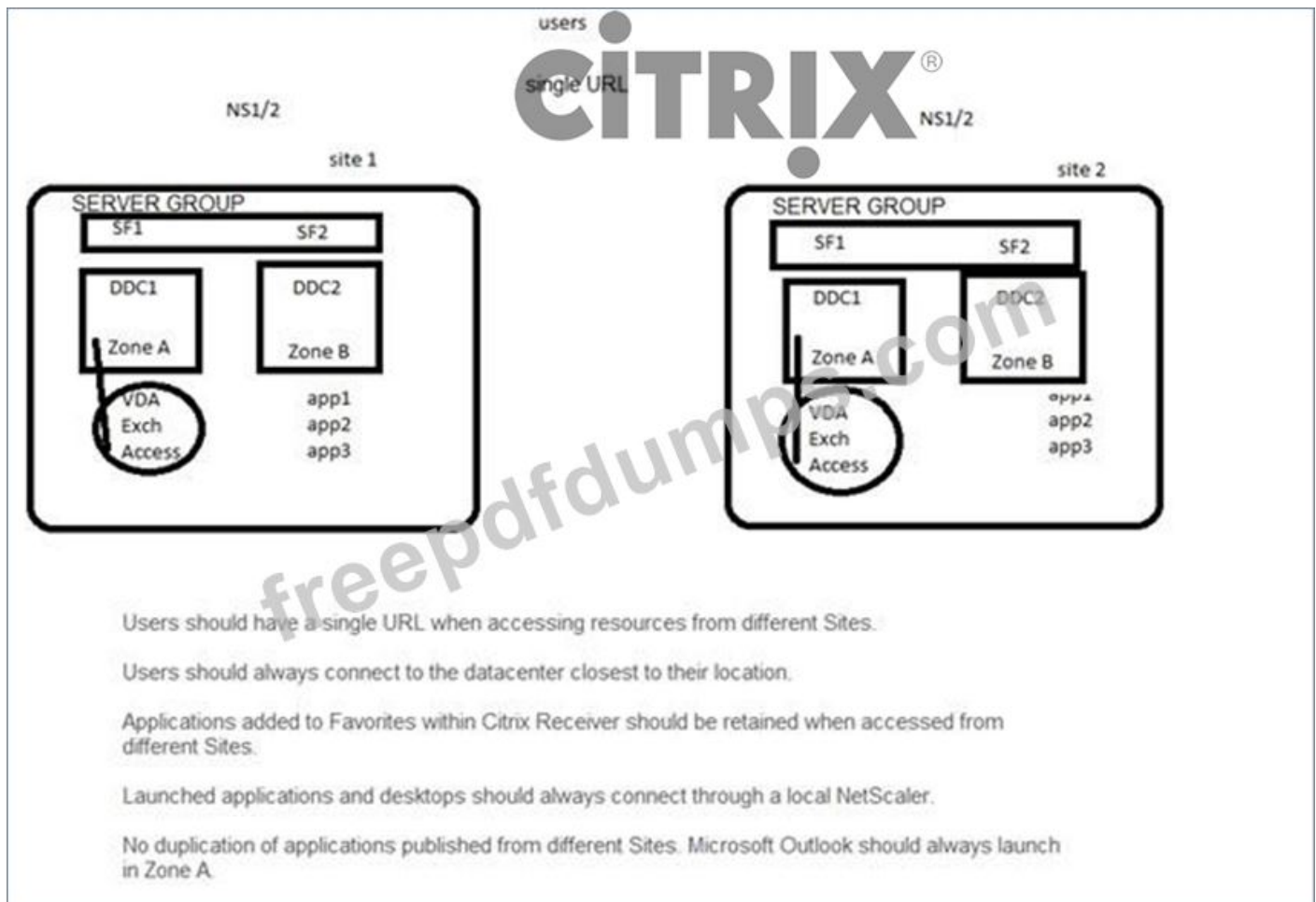
C. Within server groups of each Site

D. Within stores of each Site

**Answer: (SHOW ANSWER)**

The Favorites (subscriptions) are stored in a file database on each StoreFront server and are automatically replicated to every StoreFront server in a local Server Group.

For StoreFront servers in multiple datacenters, you can configure replication of subscriptions between Server Groups.



**NEW QUESTION: 81**

Scenario: A Citrix Architect is designing and implementing a new Citrix Virtual Apps and Desktops environment. During the kickoff meeting, management advised that their main business driver is to increase user flexibility for internal and mobile employees.

Which two design decisions should the architect make based on the listed business drivers? (Choose two.)

- A. Enhance security settings on internal network hardware and firewalls.
- B. Implement Citrix Files for internal and external collaboration and filesharing.
- C. Locate user workstations close to the application servers and corporate data.
- D. Implement a company-wide bring-your-own device (BYOD) initiative.
- E. Segment the company network and related functionalities.

**Answer: (SHOW ANSWER)**

**NEW QUESTION: 82**

Scenario: A Citrix Architect is designing a new Citrix Virtual Apps and Desktops environment. Citrix Provisioning (PVS) has been selected for image management. The PVS vDisk store requires high fault tolerance and the ability to support dual drive failure.

Which RAID level could the architect use for the PVS vDisk store?

- A. RAID 5
- B. RAID 6

C. RAID 0

D. RAID 1

**Answer: B (LEAVE A REPLY)**

Reference:

<https://docs.citrix.com/en-us/xenapp-and-xendesktop/7-15-ltsr/citrix-vdi-best-practices/design/design-userlayer5.html>

**NEW QUESTION: 83**

Scenario: A Citrix Architect is designing a new Citrix Virtual Apps and Desktops environment. The architect has identified the requirements, based on the assessment and early stages of the design.

Click the Exhibit button to view the requirements.

Design Topic	Design Decision
Deployment type	Public Cloud – Microsoft Azure
Licensing	Citrix Virtual Desktops Platinum Edition; User/Device Licenses
Maximum Concurrent Users	1,000
Images	<ul style="list-style-type: none"><li>• Windows Server 2016 – 1<ul style="list-style-type: none"><li>○ FlexCast Model: Published Apps</li></ul></li><li>• Windows Server 2016 – 2<ul style="list-style-type: none"><li>○ FlexCast Model: Published Desktops</li></ul></li><li>• Windows 10<ul style="list-style-type: none"><li>○ FlexCast Model: Hosted VDI (Static and Persistent)</li></ul></li></ul>
User Applications	<ul style="list-style-type: none"><li>• Microsoft Office 2016: All Users</li><li>• Adobe Acrobat: All Users</li><li>• Internal Sales Application: Sales Group (500 Users)</li><li>• Mozilla Firefox: Developers Group (200 Users)</li><li>• Microsoft Office 2010: Accounting Group (50 Users)</li><li>• Human Resources (HR) App: HR Managers Only (15 Users)</li></ul>

Additionally, the IT team identified 2 provisioning strategy requirements:

- \* Should be compatible with planned design decisions
- \* Should minimize required time to perform image and application updates Which provisioning method should the architect use for the environment, based on the design decisions and requirements shown in the exhibit?

A. Citrix Provisioning with App Layering

B. Citrix Provisioning

C. Manual Provisioning with App Layering

D. Manual Provisioning

E. Machine Creation Services (MCS)

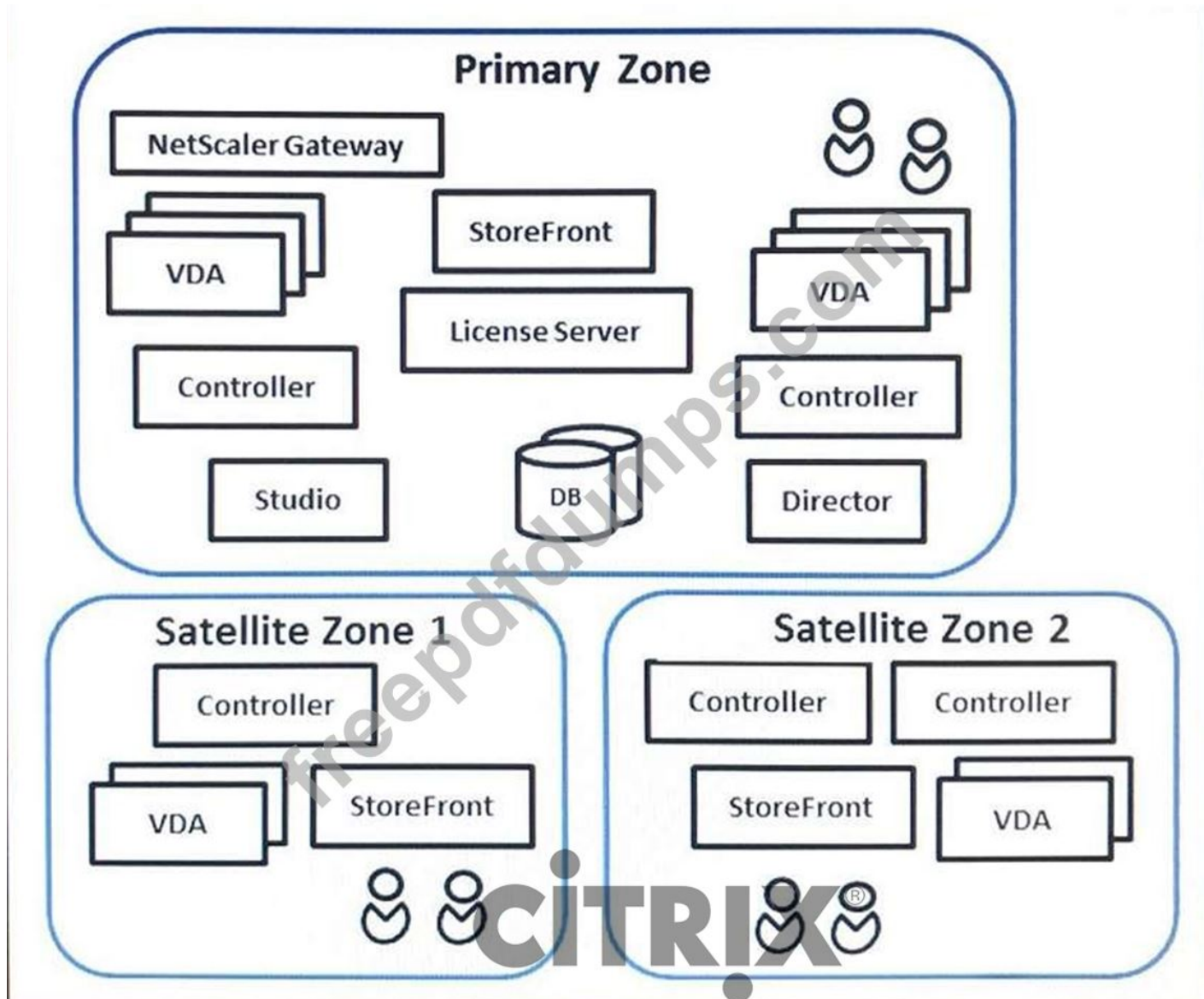
F. Machine Creation Services (MCS) with App Layering

**Answer: C (LEAVE A REPLY)**

**NEW QUESTION: 84**

Scenario: A Citrix Architect needs to assess a XenApp and XenDesktop environment. The XenApp and XenDesktop diagram in the Exhibit gives details about the current Site and Zone design.

Click the Exhibit button to view the diagram.



Which statement is correct if all the Delivery Controllers in the Primary Zone fail?

- A. Satellite Zone 2 will be promoted and the Primary Zone Virtual Delivery Agent (VDA) machines will register within Satellite Zone 2.
- B. Virtual Delivery Agent (VDA) machines in the Primary Zone will register within Satellite Zone 1.
- C. Virtual Delivery Agent (VDA) machines in the Primary Zone will register within Satellite Zone 2.
- D. Virtual Delivery Agent (VDA) machines in the Primary Zone will NOT register within Satellite Zone 1 or Satellite Zone 2.

**Answer:** (SHOW ANSWER)

A VDA in the primary zone registers with a Controller in the primary zone. A VDA in the primary zone will never attempt to register with a Controller in a satellite zone).

**NEW QUESTION: 85**

Scenario: A Citrix Architect designing a new Citrix Virtual Apps and Desktops environment needs to determine which endpoints to include. Based on discussions with various departments, the user requirements listed in the exhibit were collected.

Click the Exhibit button to view the requirements.

User Group	Typical Location	User Type	Peripheral Requirements	User Mobility	Local Storage Needed?	Resources Used	User Workload
Customer Service	Internal	Task Worker	USB Printers and Scanners	None	Yes	Data Entry Apps	High
IT Department	Roaming	Knowledge Worker	USB Printers	Medium	Yes	Departmental Published Apps	High
Marketing	Internal	Knowledge Worker	Projectors	Low	No	Hosted Desktop	Medium

Which endpoint type should the architect use for the Customer Service Group, based on the requirements?

- A. Phones
- B. Tablets
- C. Thin clients
- D. Multi-monitor workstations
- E. Desktops

**Answer: E (LEAVE A REPLY)**

#### NEW QUESTION: 86

Scenario: A Citrix Architect is investigating a recent change that is impacting system performance of the Provisioning Services farm. However, no actions have been recorded in the Audit Trail.

Which two processes are preventing Provisioning Services auditing from recording the actions?

(Choose two.)

- A. The change was completed through the SCCM integration.
- B. A task was performed using Provisioning Services PowerShell interface.
- C. A task was performed using Management Command Line Interface (MCLI).
- D. The Provisioning Services database was unavailable.
- E. Auditing is disabled by default.

**Answer: D,E (LEAVE A REPLY)**

<https://docs.citrix.com/en-us/provisioning/current-release/troubleshooting/auditing.html> Citrix Provisioning provides an auditing tool that records configuration actions on components within the provisioning farm. The auditing tool saves this information to the provisioning database.

To enable auditing

In the Citrix Provisioning console tree, right-click on the farm, then select the Farm Properties menu option.

On the Options tab, under Auditing, check the Enable auditing check box.

#### NEW QUESTION: 87

Scenario: A Citrix Architect has implemented a multi-location profile strategy as part of a large Citrix Virtual Apps and Desktops solution. The architect needs to implement a single policy that sets the profile path for all users.

New York users: Server: NYC-FS.company.lan - Share: NYC-Profiles\$

Miami users: Server: MIA-FS.company.lan - Share: MIA-Profiles\$

San Francisco users: Server: SFO-FS.company.lan - Share: SFO-Profiles\$

The architect has proposed the usage of this path for all users:

Error! Hyperlink reference not valid.

What does the architect need to define to use the above path for all users as the profile location?

- A. A user environment variable Loc using a login script
- B. A DFS-ROOT variable per data center that incorporates the user environment variable %homeshare%
- C. A new attribute called Loc using Active Directory (AD) Explorer
- D. A Loc variable using the Current-Location attribute

**Answer: C (LEAVE A REPLY)**

### NEW QUESTION: 88

Scenario: A Citrix Architect needs to design a new XenApp and XenDesktop environment. The customer previously installed all applications locally on managed laptops and desktops but is willing to evaluate other application delivery methods as part of the new deployment. The environment will be standardized on Windows 10 and Windows Server 2016 for the Virtual Delivery Agent (VDA) machines.

As part of an application analysis performed earlier in the project, the information in the Exhibit was collected regarding one of the required applications.

Click the Exhibit button to view the information.

Category	Detail
Application Name	Workspace CRM Pro
Description	Customer Relationship Management application - Users can view and edit information about current customers and sales leads.
Usage	This application will be used by the sales department.
OS Compatibility	The application is compatible with the target operating systems.
Special Considerations	The sales team must access the application from laptops, tablets, and mobile devices.

Additionally, the customer has the following objectives:

Minimize the amount of additional infrastructure components.

Minimize the server hardware required.

How should the architect install the application?

- A. On an Application Layer using Citrix App Layering, be included in a layered image, and accessed through a virtual desktop session

**B.** Stream it to a VDA machine using Microsoft App-V and accessed through a virtual desktop session

**C.** Directly on a Server OS VDA machine and accessed from the endpoint as a published application

**D.** Directly on a VDA machine image and accessed through a virtual desktop session

**E.** Directly on endpoint devices and included in a virtual desktop session using the Local App Access feature

**Answer: C (LEAVE A REPLY)**

Virtual Apps will provide more users per server so less servers while Virtual Desktops will be 1 user per VD so more servers to sustain the same amount of apps instance.

**NEW QUESTION: 89**

Scenario: A Citrix Architect is designing a new Citrix Virtual Apps and Desktops environment. The architect has identified the Resource Layer requirements shown in the exhibit.

Click the Exhibit button to view the requirements.

User Group	Persistent User Settings Required?	Assigned FlexCast Model	Access to Profile Folders Required?	Additional Requirements
Accountants	Yes	Hosted VDI – Static/Persistent	No	None
Executives	Yes	Remote PC	Yes, the following folders should be available: <ul style="list-style-type: none"> <li>• Contacts</li> <li>• Desktop</li> <li>• Downloads</li> <li>• Favorites</li> <li>• My Documents</li> </ul>	Profile data should be preserved even if the resource machine fails.  Solution must NOT require additional software to be installed on remote PCs.
Graphic Designers	Yes	Published Apps that use vGPU	Yes, the following folders should be available: <ul style="list-style-type: none"> <li>• Contacts</li> <li>• Desktop</li> <li>• Favorites</li> <li>• My Documents</li> <li>• My Pictures</li> <li>• My Videos</li> </ul>	The application reads and writes a high volume of data to and from the AppData folder.
Customer Service	No	Published Desktop (Server OS)	No	None

Which feature of Citrix Profile Management could help the architect address the Graphic Designers Group requirements while minimizing login time?

**A.** Profile streaming

**B.** Active write back

**C.** Folder redirection

**D.** File exclusions

**Answer: A (LEAVE A REPLY)**

<https://www.citrix.com/blogs/2012/02/11/citrix-profile-management-and-vdi-doing-it-right/>

### NEW QUESTION: 90

Scenario: A Citrix Architect needs to manage the disaster recovery process for a XenApp and XenDesktop environment. The environment currently consists of an active datacenter which is typically accessed by users and a disaster recovery (DR) datacenter which would be used in the event that a disaster impacts the primary datacenter. The organization has made it a priority to minimize the loss of data when failing over between datacenters and has begun planning for an event in which the environment must fail over from the primary datacenter to the DR datacenter. What is the appropriate sequence of steps that the architect should follow after getting management approval to complete the process in case of such an event?

- A. Block access to primary datacenter, complete replication, terminate/drain existing sessions, reverse direction of replication, enable access in DR datacenter
- B. Block access to primary datacenter, terminate/drain existing sessions, complete replication, reverse direction of replication, enable access in DR datacenter
- C. Terminate/drain existing sessions, complete replication, block access to primary datacenter, enable access in DR datacenter, reverse direction of replication
- D. Complete replication, terminate/drain existing sessions, block access to primary datacenter, reverse direction of replication, enable access in DR datacenter
- E. Complete replication; block access to primary datacenter, terminate/drain existing sessions, enable access in DR datacenter, reverse direction of replication
- F. Terminate/drain existing sessions; block access to primary datacenter, complete replication, reverse direction of replication, enable access in DR datacenter

**Answer: B (LEAVE A REPLY)**

<https://www.citrix.com/blogs/2014/03/29/xendesktop-gslb-dr-everything-you-think-you-know-is-probably-wrong/> Go/No-Go Decision Block access Terminate existing sessions Finish replication

### NEW QUESTION: 91

Scenario: A Citrix Architect is designing a new Citrix Virtual Apps and Desktops environment. The architect has identified the Resource Layer requirements shown in the exhibit.

Click the Exhibit button to view the requirements.

User Group	Persistent User Settings Required?	Assigned FlexCast Model	Access to Profile Folders Required?	Additional Requirements
Accountants	Yes	Published Apps	No	None
Executives	Yes	Remote PC	Yes, the following folders should be available: <ul style="list-style-type: none"> <li>• Contacts</li> <li>• Desktop</li> <li>• Downloads</li> <li>• Favorites</li> <li>• My Documents</li> </ul>	Profile data should be preserved even if the resource machine fails.  Solution must NOT require anything to be installed on remote PCs.
Graphic Designers	Yes	Hosted VDI – Random/ Non-persistent Desktops; Uses vGPU	Yes, the following folders should be available: <ul style="list-style-type: none"> <li>• Contacts</li> <li>• Desktop</li> <li>• Favorites</li> <li>• My Documents</li> <li>• My Pictures</li> <li>• My Videos</li> </ul>	Synchronize profile files in multiple sessions.
Customer Service	No	Published Desktop (Server OS)	No	None

Which feature of Citrix Profile Management could help the architect address the Graphic Designers Group requirements?

- A. NTUser.dat backup
- B. Active write back
- C. Profile streaming
- D. Profile caching

**Answer: B (LEAVE A REPLY)**

**Valid 1Y0-403 Dumps** shared by Actual4test.com for Helping Passing 1Y0-403 Exam! Actual4test.com now offer the **newest 1Y0-403 exam dumps**, the Actual4test.com 1Y0-403 exam **questions have been updated** and **answers have been corrected** get the **newest** Actual4test.com 1Y0-403 dumps with Test Engine here:

[https://www.actual4test.com/1Y0-403\\_examcollection.html](https://www.actual4test.com/1Y0-403_examcollection.html) (244 Q&As Dumps, **30%OFF**)

**Special Discount: Freepdfdumps)**

#### NEW QUESTION: 92

Scenario: Currently, the user interface for a Citrix Apps and Desktops environment is presented in English, but a planned on-premises expansion in Poland will support 100 new users with a requirement to use all Polish interfaces.

Two constraints were identified by a Citrix Architect:

Network bandwidth is low and unstable.

Network latency is higher than 300 ms to the existing Site.

How should the architect deploy Citrix Virtual Apps and Desktops for these users?

- A. Implement Citrix Cloud Gateway in Europe.
- B. Install a StoreFront server in Poland.
- C. Create a new Site in Poland.

<https://docs.citrix.com/en-us/xenapp-and-xendesktop/7-15-ltsr/manage-deployment/zones.html>

- D. Add a Satellite Zone to the existing Site.

**Answer: C (LEAVE A REPLY)**

**NEW QUESTION: 93**

Scenario: A Citrix Architect needs to support a Citrix Virtual Apps and Desktops environment with 2 data centers. App Layering is being used to create layered images that are used by the Virtual Delivery Agent (VDA) machines in both data center locations. To comply with disaster recovery (DR) requirements, administrators must be able to modify and deploy layered images from either data center if needed.

Which statement correctly describes the process that the architect must follow to meet the requirements?

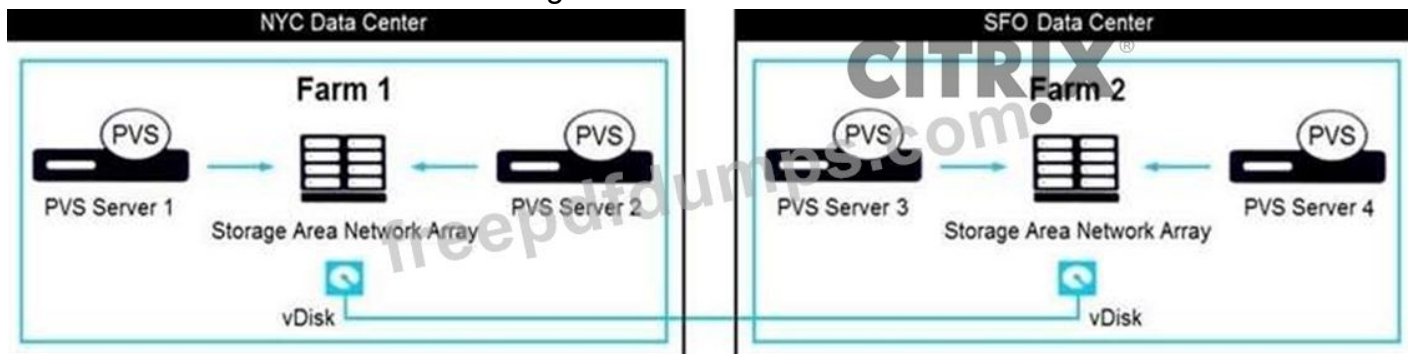
- A. All required layers should be exported from the first Enterprise Layer Manager using the hypervisor hosting the machine, then imported to the hypervisor resource pool in the secondary data center.
- B. All required layers should be copied from the first Enterprise Layer Manager to the second Enterprise Layer Manager using RoboCopy commands
- C. All required layers should be copied from the first Enterprise Layer Manager to the second Enterprise Layer Manager using Microsoft Distributed File System Replication (DFSR)
- D. All required layers should be exported from the first Enterprise Layer Manager to an SMB file share, and then imported into the second Enterprise Layer Manager.

**Answer: C (LEAVE A REPLY)**

**NEW QUESTION: 94**

Scenario: A Citrix Architect is designing a multi-data center Citrix Virtual Apps and Desktops environment that will use Citrix Provisioning (PVS) to manage Virtual Delivery Agent (VDA) machine images. Each data center will have a separate PVS farm. During design discussions, the architect created a diagram to depict the way in which vDisk files will be replicated among PVS farms, based on the available storage for the vDisk stores.

Click the Exhibit button to view the diagram.



Overall, the customer has identified 3 objectives for the image-replication process:

- Administrative time required to replicate images among farms must be minimized.
- The process must be usable by storage administrators without PVS farm administrative permissions.
- Pre-existing infrastructure and processes should be used where possible.

Which method should the architect use to replicate vDisk files among data centers?

- A. Manual copy
- B. SAN replication
- C. Microsoft Distributed File System Replication (DFSR) Namespaces
- D. Scheduled RoboCopy commands
- E. vDisk Replicator Utility

**Answer: ([SHOW ANSWER](#))**

### **NEW QUESTION: 95**

Scenario: A Citrix Architect is developing a Citrix Provisioning (PVS) design for a healthcare organization. The initial design places all PVS farm components in the primary data center of the organization. The customer asks if the vDisk can be streamed from PVS servers in the primary data center to target devices located in a secondary data center in another region, while still maintaining good performance. The data centers are connected with a 10 GB link with approximately 20 ms of latency.

The architect recommends against the organization pursuing this approach.

Which statement is a relevant reason for this recommendation?

- A. This configuration would introduce excessive latency in streaming traffic.
- B. This configuration does NOT provide sufficient connectivity between PVS servers and the farm database.
- C. This configuration prevents the Subnet Affinity feature from being implemented.
- D. This configuration does NOT provide sufficient bandwidth for streaming traffic.

**Answer: A ([LEAVE A REPLY](#))**

Explanation

Explanation/Reference: <https://support.citrix.com/article/CTX220651>

### **NEW QUESTION: 96**

Which piece of License Server information does a Citrix Administrator need in order to allocate and download the XenDesktop license file from mycitrix.com?

- A. FQDN
- B. IP Address
- C. MAC Address
- D. Hostname

**Answer: ([SHOW ANSWER](#))**

### **NEW QUESTION: 97**

Scenario: A Citrix Architect needs to design a new XenApp and XenDesktop environment. The table in the Exhibit lists details about the requirements of the current user groups and their Virtual Delivery Agent (VDA) machine workloads.

Click the Exhibit button to view the table.

User	Scaling Priority	VDA Type	Workload Weight	CPU Overcommit	Virtual CPUs per VIM	VMs per Host	Users per VM
User Group 1	Scalability	Desktop	Heavy	4:1	2	56	1
User Group 2	User experience	Server	Medium	1:5:1	16	18	20
User Group 3	Scalability	Desktop	Medium	6:1	2	40	1
User Group 4	Scalability	Server	Medium	1:5:1	6	27	20

The architect should scale the hardware used to host the VMs for User Group 1 to GB of RAM. (Choose the correct option to complete the sentence.)

- A. 256
- B. 128
- C. 384
- D. 196
- E. 64

**Answer: C (LEAVE A REPLY)**

6 GB (heavy/scale) x 56 VM's per host = 336

User Workload	Operating System	vRAM Configured for Scale	vRAM Configured for Experience
Light	Windows 7	2 GB	3 GB
	Windows 10	2 GB	3 GB
	Windows 2012R2	256 MB per user	
	Windows 2016	320 MB per user	
Medium	Windows 7	3 GB	4 GB
	Windows 10	3 GB	4 GB
	Windows 2012R2	512 MB per user	
	Windows 2016	640 MB per user	
Heavy	Windows 7	6 GB	8 GB
	Windows 10	6 GB	8 GB
	Windows 2012R2	1024 MB per user	
	Windows 2016	1280 MB per user	

Table 21: vRAM Allocation

**NEW QUESTION: 98**

Scenario: A Citrix Architect needs to design a new XenApp and XenDesktop environment. The customer previously installed all applications locally on managed laptops and desktops but is

willing to evaluate other application delivery methods as part of the new deployment. The environment will be standardized on Windows 10 and Windows Server 2016 for the Virtual Delivery Agent (VDA) machines.

As part of an application analysis performed earlier in the project, the information in the Exhibit was collected regarding one of the required applications.

Click the Exhibit button to view the information.

Category	Detail
Application Name	Workspace Payroll
Description	Application that can be used to view and change employee salaries and bonuses
Usage	The application is used by a handful of designated individuals within the Human Resources and executive teams.
OS Compatibility	The application is compatible with the target operating systems.
Special Considerations	<p>To meet security requirements, this application must NOT be present on any machines accessed by unauthorized users.</p> <p>Users should NOT be able to download, copy, or otherwise access payroll data on their endpoints.</p> <p>The payroll application must be able to communicate with a number of other applications and services on the machine where it is running.</p> <p>HR managers and executives require access to the same common applications as the rest of the organization.</p>

The customer has an additional objective to minimize the number of images that must be managed.

How should the architect install the application?

- A. Directly on endpoint devices and included in a virtual desktop session using the Local App Access feature
- B. On an Application Layer using Citrix App Layering, be included in a layered image, and accessed through a virtual desktop session
- C. On an Application Layer using Citrix App Layering then be presented to assigned users as an Elastic Layer during a virtual desktop session
- D. Stream it to a VDA machine using Microsoft App-V and accessed through a virtual desktop session
- E. Directly on a Server OS VDA machine and accessed from the endpoint as a published application

**Answer:** ([SHOW ANSWER](#))

### NEW QUESTION: 99

Scenario: A Citrix Architect is designing a new Citrix Virtual Apps and Desktops environment.

The table in the exhibit lists details about the requirements of the current user groups and their Virtual Delivery Agent (VDA) machine workloads.

Click the Exhibit button to view the table.

User	Scaling Priority	VDA Type	Workload Weight	CPU Overcommit	Virtual CPUs per VM	VMs per Host	Users per VM
User Group 1	Scalability	Desktop	Heavy	6:1	4	30	1
User Group 2	User Experience	Server	Medium	1.5:1	16	18	20
User Group 3	Scalability	Desktop	Medium	6:1	2	40	1
User Group 4	Scalability	Server	Medium	1.5:1	6	27	20

At a minimum, the architect should scale the hardware used to host the virtual machine (VMs) for User Group

1 to \_\_\_\_\_ GB of RAM. (Choose the correct option to complete the sentence.)

- A. 128
- B. 64
- C. 512
- D. 384
- E. 256

**Answer:** ([SHOW ANSWER](#))

#### NEW QUESTION: 100

Scenario: A Citrix Architect is designing a XenDesktop environment. The Graphic Editors group uses a graphic-intensive and media-rich application. Graphic Editors will be provided with a Windows Server 2016 Desktop with NVIDIA graphics hardware acceleration. HDX 3D Pro and Server VDI options were selected during the command-line installation of the Virtual Delivery Agent (VDA).

Which limitation will affect the Graphic Editors group?

- A. GPU acceleration of OpenGL
- B. Support for a single user session per VDA
- C. Support for H.264 graphics protocol
- D. GPU acceleration of DirectX

**Answer:** ([SHOW ANSWER](#))

<https://support.citrix.com/article/CTX131385> XenApp (RDS)

Note that there is no HDX 3D Pro mode option available when installing the VDA for Server OS. The VDA is installed in Standard mode and it uses a specialized Citrix Driver for display remoting only. GPU sharing and application graphics acceleration is supported on the Windows Server 2012 and 2016 operating systems, with the same limitations as listed under the XenDesktop standard mode section above.

Standard mode. Recommended for virtual desktops without GPU and RemotePC access. This is the default installation option in the VDA for Windows Desktop OS versions 7.6 to 7.15 LTSR and default operating mode with versions 7.16 and newer. This mode will install and use the Citrix

Display Driver for rendering. Note that if a GPU is available, hardware acceleration for applications is still possible in standard mode with the following limitations:

Windowed applications only, no full-screen application support.

DirectX feature levels up to 9.3 with Windows 7. Some DirectX 10, 11, 12 applications may not run if they do not tolerate fallback to DirectX 9.

DirectX 10, 11, and 12 with Windows 10 only.

OpenGL application acceleration with NVIDIA GPUs only

### NEW QUESTION: 101

Scenario: A Citrix Architect needs to design a XenApp and XenDesktop environment. While discussing the User Layer, the customer contact states that support must be provided for specialized peripherals such as specialty keyboards and mice.

Which two valid considerations should the architect communicate to the customer before designing for generic USB redirection? (Choose two.)

- A. The peripheral driver does NOT need to be installed with generic USB redirection.
- B. The peripherals will consume more bandwidth compared to using a dedicated virtual channel.
- C. The peripherals mentioned will NOT work with generic USB redirection.
- D. The peripherals will NOT be available to the physical endpoint device while the HDX session is active.
- E. The peripherals could introduce a security risk because there is no way to specify which generic USB devices are permitted in a HDX session.

**Answer: B,E (LEAVE A REPLY)**

<https://www.citrix.com/blogs/2014/02/03/peripheral-devices-in-xendesktop/>

### NEW QUESTION: 102

Scenario: An infrastructure team has stated that the new Citrix Virtual Apps and Desktops virtualization host will have the specifications shown in the exhibit.

Click the Exhibit button to view the specifications.

CPU	4 sockets, 12 cores with hyper-threading
RAM	512 GB

The design document calls for the VMs to have 2 CPUs and 4 GB RAM. Approximately how many virtual desktops can be hosted on each physical server?

- A. 120
- B. 190
- C. 240
- D. 60

<https://docs.citrix.com/en-us/tech-zone/design/design-decisions/single-server-scalability.html#scalability-factors>

**Answer: C (LEAVE A REPLY)**

### NEW QUESTION: 103

Scenario: A Citrix Architect needs to design a new XenApp and XenDesktop environment. Click the Exhibit button to view information collected by the architect during the Resource Layer discussions.

Category	Detail
Active Directory Permissions	The Active Directory (AD) team implements all AD-based policy changes based on approved change control tickets.
User Profile Type	A third-party profile management solution will be used.
Required Policies	Due to an organizational requirement, Block Inheritance must NOT be enabled on the OUs containing Virtual Delivery Agent (VDA) machines. Instead, mandated policy settings will be applied to the VDA machines at a higher level in the OU.
Security Considerations	The Virtual Delivery Agent machines should receive additional lockdown settings that are NOT currently being applied elsewhere in the environment.
Other Requirements	The Citrix Administrative team would like to have the ability to directly test and implement settings.

Based on the requirements, the Citrix Administrative team should use \_\_\_\_\_ to manage Citrix policies and \_\_\_\_\_ to manage Microsoft settings. (Choose the correct option to complete the sentence.)

- A. Citrix Studio; Workspace Environment Manager
- B. Active Directory Group Policy Objects; Active Directory Group Policy Objects
- C. Citrix Studio; Local Policies
- D. Active Directory Group Policy Objects; Workspace Environment Manager
- E. Citrix Studio; Active Directory Group Policy Objects

**Answer: A (LEAVE A REPLY)**

Note: Block inheritance can NOT be used and the VDA agent machines should received additional lockdown settings that are NOT being applied elsewhere and finally the CTX team needs to have the ability to test implement settings all that can only be done with Studio and WEM since there is an AD Team to do GPO's.

### NEW QUESTION: 104

Scenario: A Citrix Architect needs to design a new XenApp and XenDesktop environment. Provisioning Services has been selected for image management. The Provisioning Services vDisk store requires high fault tolerance and the ability to support dual drive failure. Which RAID level could the architect use for the Provisioning Services vDisk store?

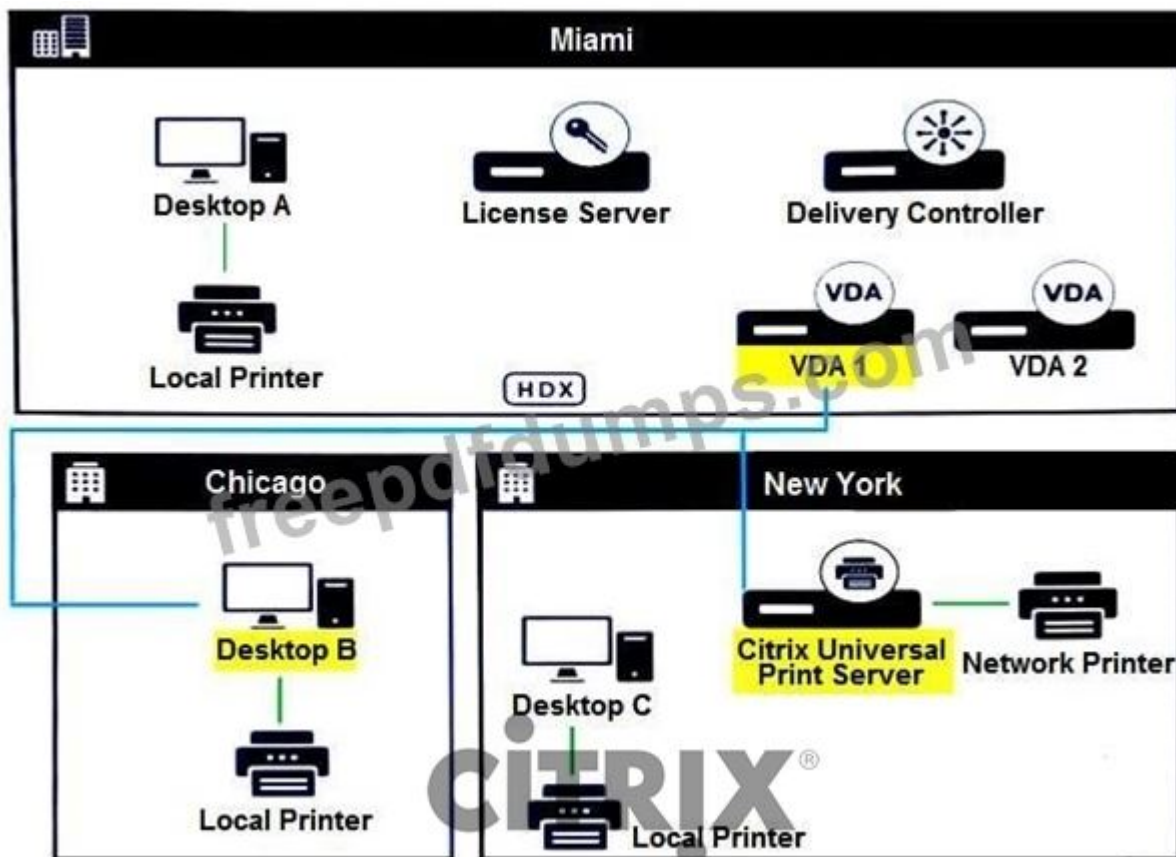
- A. RAID 5
- B. RAID 6
- C. RAID 1
- D. RAID 0

**Answer: B (LEAVE A REPLY)**

## NEW QUESTION: 105

Scenario: A Citrix Architect is designing a new Citrix Virtual Apps and Desktops environment for a company that maintains branch offices in New York, Chicago, and Miami. Management has described the following requirements for the environment:

- \* The Citrix Virtual Apps and Desktops Site must be located in the company headquarters in Miami.
  - \* All users will only need to access their default local print queue from within their HDX sessions.
  - \* Users in Chicago need access to printers hosted on a Citrix Universal Print Server located in New York.
  - \* Printing performance and bandwidth usage must be optimized where possible.
  - \* The environment must be highly available.
  - \* The auto-created client printer models must function with no additional configuration needed.
- Click the Exhibit button to review the printing requirements.



What does the architect need to do to meet the printing requirements for the users in Chicago?

**A.** Enable the Auto-create client printers policy with 'Auto-create all client printers' setting enabled. Enable the Universal print driver usage policy to 'Use universal printing only'. Apply the policy to all users. Then, install and configure the Citrix Universal Print Server components and configure the Universal Print Server policy to 'Enabled with no fallback to Windows native remote printing'. Last, create a session printer policy, add the network printers that will use the Universal Print Server, and apply the policy to the users in Chicago.

**B.** Enable the Auto-create client printers policy with 'Auto-create all client printers' setting enabled. Enable the Universal print driver usage policy to 'Use universal printing only'. Apply the policy to Chicago users. Then, install and configure the Citrix Universal Print Server components

and configure the Universal Print Server policy to 'Enabled with fallback to Windows native remote printing'. Last, create a session printer policy, add the network printers that will use the Universal Print Server, and apply the policy to all users.

**C.** Enable the Auto-create client printers policy with 'Auto-create all client's default printer only' setting enabled.

Enable the Universal print driver usage policy to 'Use universal printing only if requested driver is unavailable'. Apply the policy to all users. Then, install and configure the Citrix Universal Print Server components and configure the Universal Print Server policy to 'Enabled with fallback to Windows native remote printing'. Last, create a session printer policy, add the network printers that will use the Universal Print Server, and apply the policy to all users.

**D.** Enable the Auto-create client printers policy with 'Auto-create all client's default printer only' setting enabled.

Enable the Universal print driver usage policy to 'Use universal printing only'. Apply the policy to all users.

Then, install and configure the Citrix Universal Print Server components and configure the Universal Print Server policy to 'Enabled with fallback to Windows native remote printing'. Last, create a session printer policy, add the network printers that will use the Universal Print Server, and apply the policy to the users in Chicago.

**Answer: D (LEAVE A REPLY)**

Explanation/Reference: <https://docs.citrix.com/en-us/citrix-virtual-apps-desktops/policies/reference/ica-policy-settings/printing-policy-settings/client-printers-policy-settings.html>

### **NEW QUESTION: 106**

Scenario: A Citrix Architect needs to implement a new XenDesktop environment for an engineering company. The IT department has purchased 1,000 XenDesktop Enterprise licenses. They will deploy Microsoft Office productivity applications to all users. Users access XenApp sessions from company offices using thin client devices and remotely through NetScaler Gateway using personal devices.

The company requires IT to produce a report of all XenApp connection failures for the previous year.

Which two actions does the architect need to take to support these requirements? (Choose two.)

**A.** Purchase XenDesktop Platinum licenses.

**B.** Purchase NetScaler Gateway Universal licenses.

**C.** Configure GroomSessionsRetentionDays to 365 days.

**D.** Implement NetScaler Management and Analytics System (MAS).

**E.** Configure GroomFailuresRetentionDays to 365 days.

**Answer: A,E (LEAVE A REPLY)**

You need Platinum (today Premium) for retention more than 31 days. And Default Value for GroomFailuresRetentionDays is 90 days.

- **Premium licensed Sites** - you can update the grooming retention settings above to any number of days.
- **Advanced licensed Sites** - the grooming retention for all settings is limited to 31 days.
- **All other Sites** - the grooming retention for all settings is limited to 7 days.

**Exceptions:**

- GroomApplicationInstanceRetentionDays can be set only in Premium licensed Sites.
- GroomApplicationErrorsRetentionDays and GroomApplicationFaultsRetentionDays are limited to 31 days in Premium licensed Sites.

	Setting name	Affected grooming	Default value Platinum (days)	Default value non-Platinum (days)
1	GroomSessionsRetentionDays	Session and Connection records retention after Session termination	90	7
2	GroomFailuresRetentionDays	MachineFailureLog and ConnectionFailureLog records	90	7
3	GroomLoadIndexesRetentionDays	LoadIndex records	90	7
4	GroomDeletedRetentionDays	Machine, Catalog, DesktopGroup, and Hypervisor entities that have a LifecycleState of 'Deleted'. This also deletes any related Session, SessionDetail.	90	7

**Valid 1Y0-403 Dumps** shared by Actual4test.com for Helping Passing 1Y0-403 Exam! Actual4test.com now offer the **newest 1Y0-403 exam dumps**, the Actual4test.com 1Y0-403 exam **questions have been updated** and **answers have been corrected** get the **newest** Actual4test.com 1Y0-403 dumps with Test Engine here:

[https://www.actual4test.com/1Y0-403\\_examcollection.html](https://www.actual4test.com/1Y0-403_examcollection.html) (244 Q&As Dumps, **30%OFF**)

**Special Discount: Freepdfdumps)**

**Valid 1Y0-403 Dumps** shared by Actual4test.com for Helping Passing 1Y0-403 Exam! Actual4test.com now offer the **newest 1Y0-403 exam dumps**, the Actual4test.com 1Y0-403 exam **questions have been updated** and **answers have been corrected** get the **newest**

Actual4test.com 1Y0-403 dumps with Test Engine here:

[https://www.actual4test.com/1Y0-403\\_examcollection.html](https://www.actual4test.com/1Y0-403_examcollection.html) (244 Q&As Dumps, **30%OFF**

**Special Discount: Freepdfdumps**)