

# Citrix.1Y0-403.v2024-08-01.q116

<b>Exam Code:</b>	1Y0-403
<b>Exam Name:</b>	Citrix Virtual Apps and Desktops 7 Assessment, Design and Advanced Configurations
<b>Certification Provider:</b>	Citrix
<b>Free Question Number:</b>	116
<b>Version:</b>	v2024-08-01
<b># of views:</b>	505
<b># of Questions views:</b>	1160
<a href="https://www.freepdfdumps.com/Citrix.1Y0-403.v2024-08-01.q116.html">https://www.freepdfdumps.com/Citrix.1Y0-403.v2024-08-01.q116.html</a>	

## NEW QUESTION: 1

Scenario: A Citrix Architect needs to design a new XenApp and XenDesktop environment. The architect has determined the user groups and FlexCast model listed in the Exhibit during the high-level design. Click the Exhibit button to view the user group and FlexCast model details.

User Groups	Endpoint	Network	Virtual Desktop	Desktop	Comments
Accountants	Corporate-owned	LAN	Pooled VDI	Windows 7	Office Applications
Executives	Corporate-owned	LAN	Hosted Shared App	Windows 2016	None
Graphic Designers	Mac BYOD	LAN	Hosted Shared Desktop	Windows 2008R2	Multimedia with High Frame Rate
Customer Service	Corporate-owned	WAN	Personal Hosted Desktop	Windows 10	None
Field Engineers	Mobile broadband tablet	Satellite link	Hosted Shared Desktop	Windows 2008R2	3D CAD

Which graphics protocol should the architect select for the highlighted group in the Exhibit?

- A. Thinwire (Legacy)
- B. Framehawk
- C. Thinwire+
- D. H.264

**Answer: A (LEAVE A REPLY)**

Thinwire+ is for Win8, Win10, Win2012 and newer. Legacy Thinwire is for Win7 and Win2008R2.

## NEW QUESTION: 2

Scenario: A Citrix Architect is configuring a multi-location profile strategy as part of a large Citrix Virtual Apps and Desktops solution. The architect needs to implement a single policy that sets the profile path for all users and distributes the user profiles between 3 shares and 9 file servers.

- \* New York users: Server: NYC-FS.company.lan - Share: NYC-Profiles\$
  - \* Miami users: Server: MIA-FS.company.lan - Share: MIA-Profiles\$
  - \* San Francisco users: Server: SFO-FS.company.lan - Share: SFO-Profiles\$ Which value constitutes a valid path for use with a Citrix Profile Management policy?
- A. \\#DataCenter#-FS.company.lan\#DataCenter#-Profiles\$\#sAMAccountName#\%ProfileVer%\
  - B. \\%DFS-ROOT%.company.lan\%HomeShare%\$\#sAMAccountName#\%ProfileVer%\
  - C. \\#DFS-ROOT#.company.lan\%HomeLocation%\$\#sAMAccountName#\%ProfileVer%\
  - D. \\%DataCenter%-FS.company.lan\%UserHome%-Profiles\$\#sAMAccountName#\%ProfileVer%\

**Answer: ([SHOW ANSWER](#))**

### NEW QUESTION: 3

Scenario: A Citrix Architect is designing a XenDesktop environment. The Graphic Editors group uses a graphic-intensive and media-rich application. Graphic Editors will be provided with a Windows Server 2016 Desktop with NVIDIA graphics hardware acceleration. HDX 3D Pro and Server VDI options were selected during the command-line installation of the Virtual Delivery Agent (VDA).

Which limitation will affect the Graphic Editors group?

- A. GPU acceleration of OpenGL
- B. Support for a single user session per VDA
- C. Support for H.264 graphics protocol
- D. GPU acceleration of DirectX

**Answer: ([SHOW ANSWER](#))**

<https://support.citrix.com/article/CTX131385> XenApp (RDS)

Note that there is no HDX 3D Pro mode option available when installing the VDA for Server OS. The VDA is installed in Standard mode and it uses a specialized Citrix Driver for display remoting only. GPU sharing and application graphics acceleration is supported on the Windows Server 2012 and 2016 operating systems, with the same limitations as listed under the XenDesktop standard mode section above.

Standard mode. Recommended for virtual desktops without GPU and RemotePC access. This is the default installation option in the VDA for Windows Desktop OS versions 7.6 to 7.15 LTSR and default operating mode with versions 7.16 and newer. This mode will install and use the Citrix Display Driver for rendering. Note that if a GPU is available, hardware acceleration for applications is still possible in standard mode with the following limitations:

Windowed applications only, no full-screen application support.

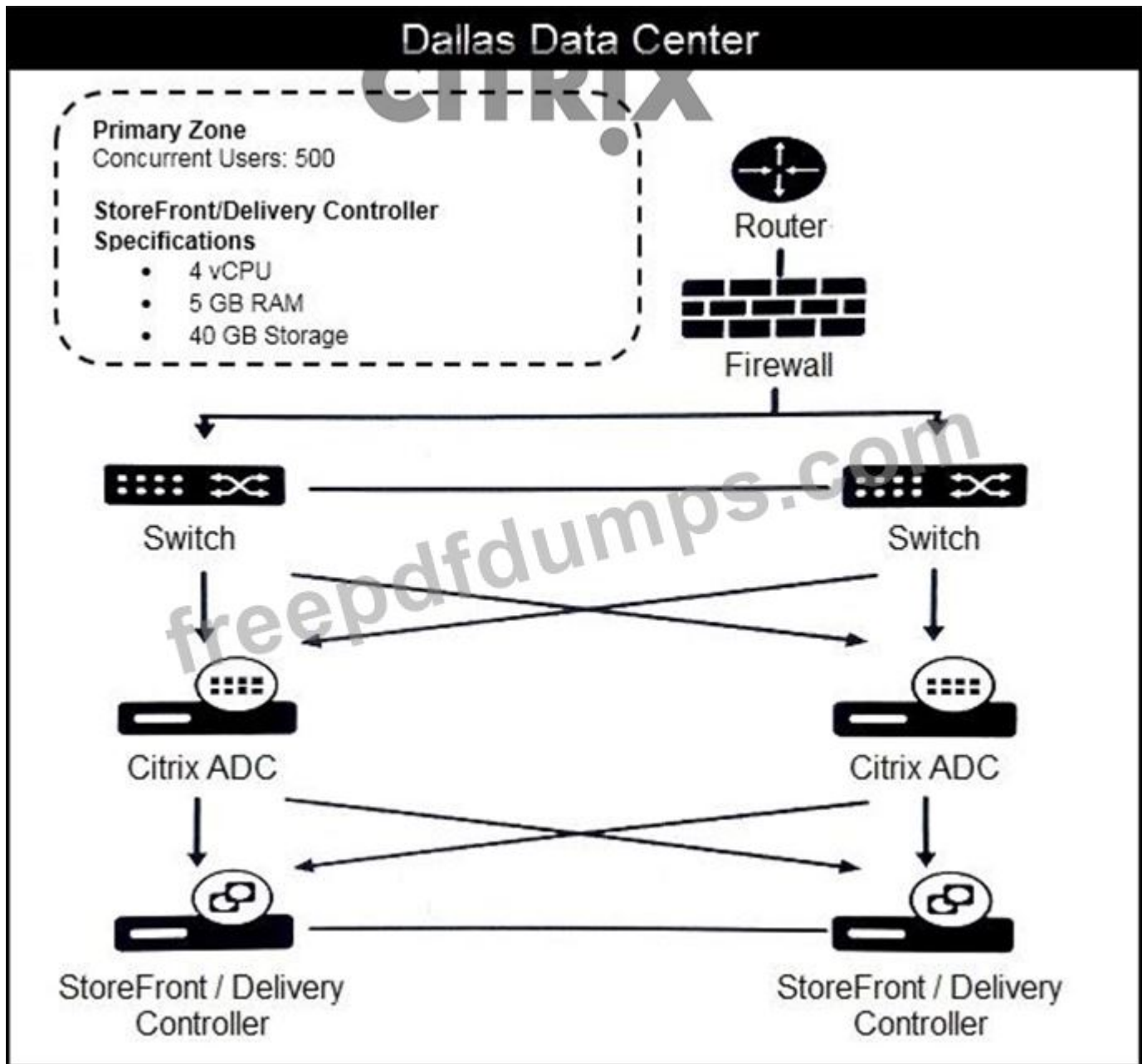
DirectX feature levels up to 9.3 with Windows 7. Some DirectX 10, 11, 12 applications may not run if they do not tolerate fallback to DirectX 9.

DirectX 10, 11, and 12 with Windows 10 only.

OpenGL application acceleration with NVIDIA GPUs only

### NEW QUESTION: 4

Scenario: A Citrix Architect is designing a single-Site Citrix Virtual Apps and Desktops production environment. Through earlier design discussions, the architect has determined the environment details listed in the exhibit Click the Exhibit button to view the details.



What should the architect change in the current environment to align with Citrix leading practices?

- A. The existing Delivery Controller and StoreFront servers should be allocated two additional CPUs each.
- B. The existing Delivery Controller and StoreFront servers should be allocated an additional 2 GB of RAM each.
- C. The Delivery Controller and StoreFront roles should NOT be co-located on the same server.
- D. A Delivery Controller should be added to the Site.
- E. A Delivery Controller should be removed from the Site.

Answer: ([SHOW ANSWER](#))

NEW QUESTION: 5

Scenario: A Citrix Architect is designing a new Citrix Virtual Apps and Desktops environment. Citrix Provisioning (PVS) has been selected for image management. The PVS vDisk store requires high fault tolerance and the ability to support dual drive failure.

Which RAID level could the architect use for the PVS vDisk store?

- A. RAID 5
- B. RAID 6
- C. RAID 0
- D. RAID 1

**Answer: (SHOW ANSWER)**

Reference:

<https://docs.citrix.com/en-us/xenapp-and-xendesktop/7-15-ltsr/citrix-vdi-best-practices/design/design-userlayer5.html>

### NEW QUESTION: 6

Scenario: A Citrix Architect needs to design a new XenApp and XenDesktop environment. The customer previously installed all applications locally on managed laptops and desktops but is willing to evaluate other application delivery methods as part of the new deployment. The environment will be standardized on Windows 10 and Windows Server 2016 for the Virtual Delivery Agent (VDA) machines.

As part of an application analysis performed earlier in the project, the information in the Exhibit was collected regarding one of the required applications.

Click the Exhibit button to view the information.

Category	Detail
Application Name	Workspace Payroll
Description	Application that can be used to view and change employee salaries and bonuses
Usage	The application is used by a handful of designated individuals within the Human Resources and executive teams.
OS Compatibility	The application is compatible with the target operating systems.
Special Considerations	To meet security requirements, this application must NOT be present on any machines accessed by unauthorized users.  Users should NOT be able to download, copy, or otherwise access payroll data on their endpoints.  The payroll application must be able to communicate with a number of other applications and services on the machine where it is running.  HR managers and executives require access to the same common applications as the rest of the organization.

The customer has an additional objective to minimize the number of images that must be managed.

How should the architect install the application?

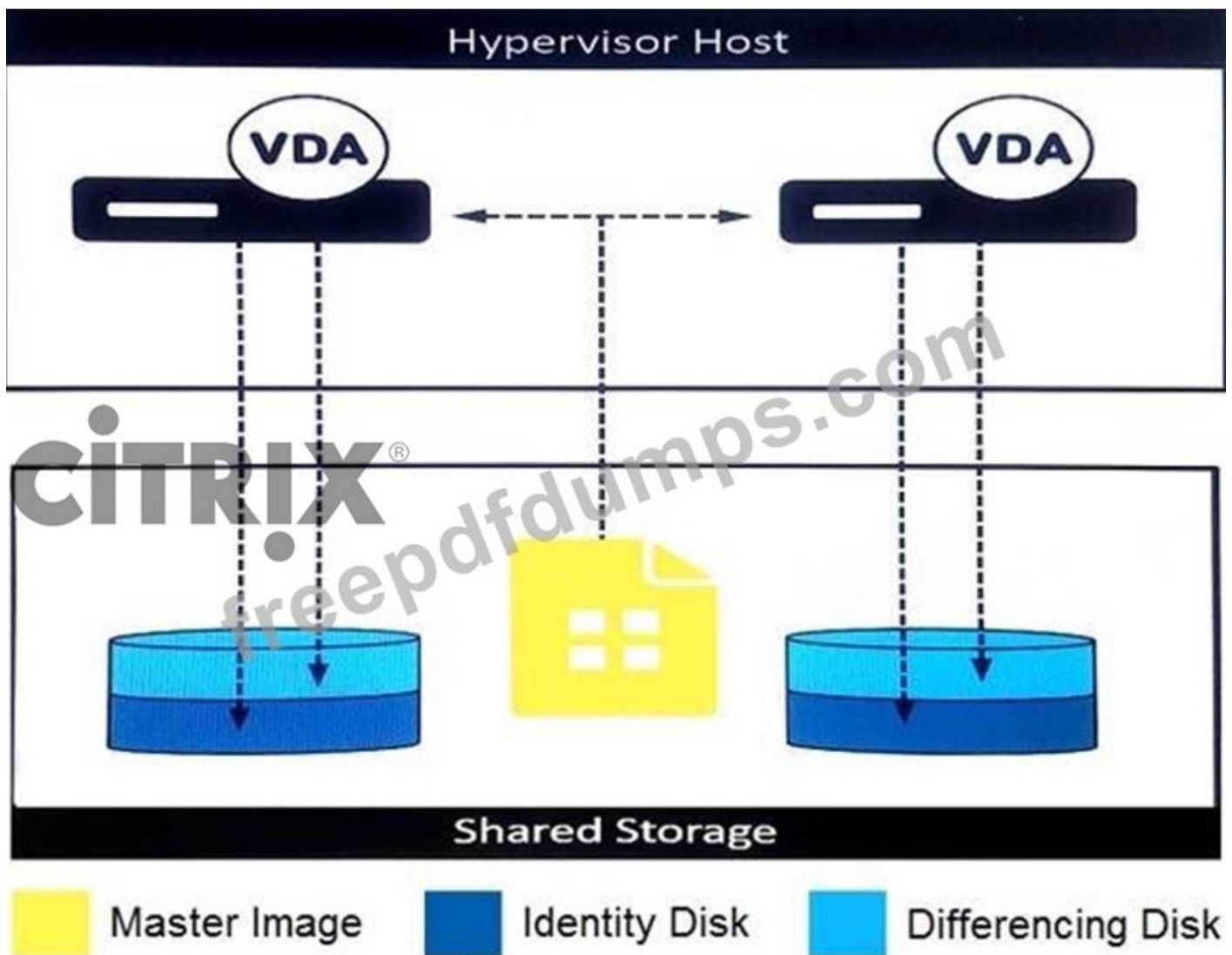
- A. On an Application Layer using Citrix App Layering then be presented to assigned users as an Elastic Layer during a virtual desktop session
- B. Directly on a Server OS VDA machine and accessed from the endpoint as a published application
- C. Stream it to a VDA machine using Microsoft App-V and accessed through a virtual desktop session
- D. On an Application Layer using Citrix App Layering, be included in a layered image, and accessed through a virtual desktop session
- E. Directly on endpoint devices and included in a virtual desktop session using the Local App Access feature

Answer: A ([LEAVE A REPLY](#))

**NEW QUESTION: 7**

Scenario: A Citrix Architect is redesigning a Citrix Virtual Apps and Desktops environment to include Machine Creation Services (MCS). During design discussions, the locations for the MCS-provisioned thin clone machine disks are proposed as shown in the exhibit.

Click the Exhibit button to view the details.



Which two potential issues should the architect address with the customer before proceeding with this configuration? (Choose two.)

- A. It will require substantial read IOPS from the shared storage location during machine creation and updates.
- B. It will require more storage to be allocated on the virtual machine (VM) hosts compared with other options.
- C. It will require substantial write IOPS to the shared storage location as temporary data is written.
- D. It is limited to certain hypervisors.
- E. It is limited to NFS shared storage.

**Answer: A,B ([LEAVE A REPLY](#))**

### **NEW QUESTION: 8**

Scenario: The IT team of a company needs to mitigate the Hardware Layer to Microsoft Azure. The Virtual Delivery Agent (VDA) machines are manually provisioned within Microsoft Azure. The IT team asks a Citrix Architect for a solution for high availability of existing VDA machines in a single Azure data center. The objective is to be proactive about any hardware failure at Microsoft Azure, so that all virtual machines (VMs) will NOT be affected.

What should the architect recommend the IT team create in Microsoft Azure?

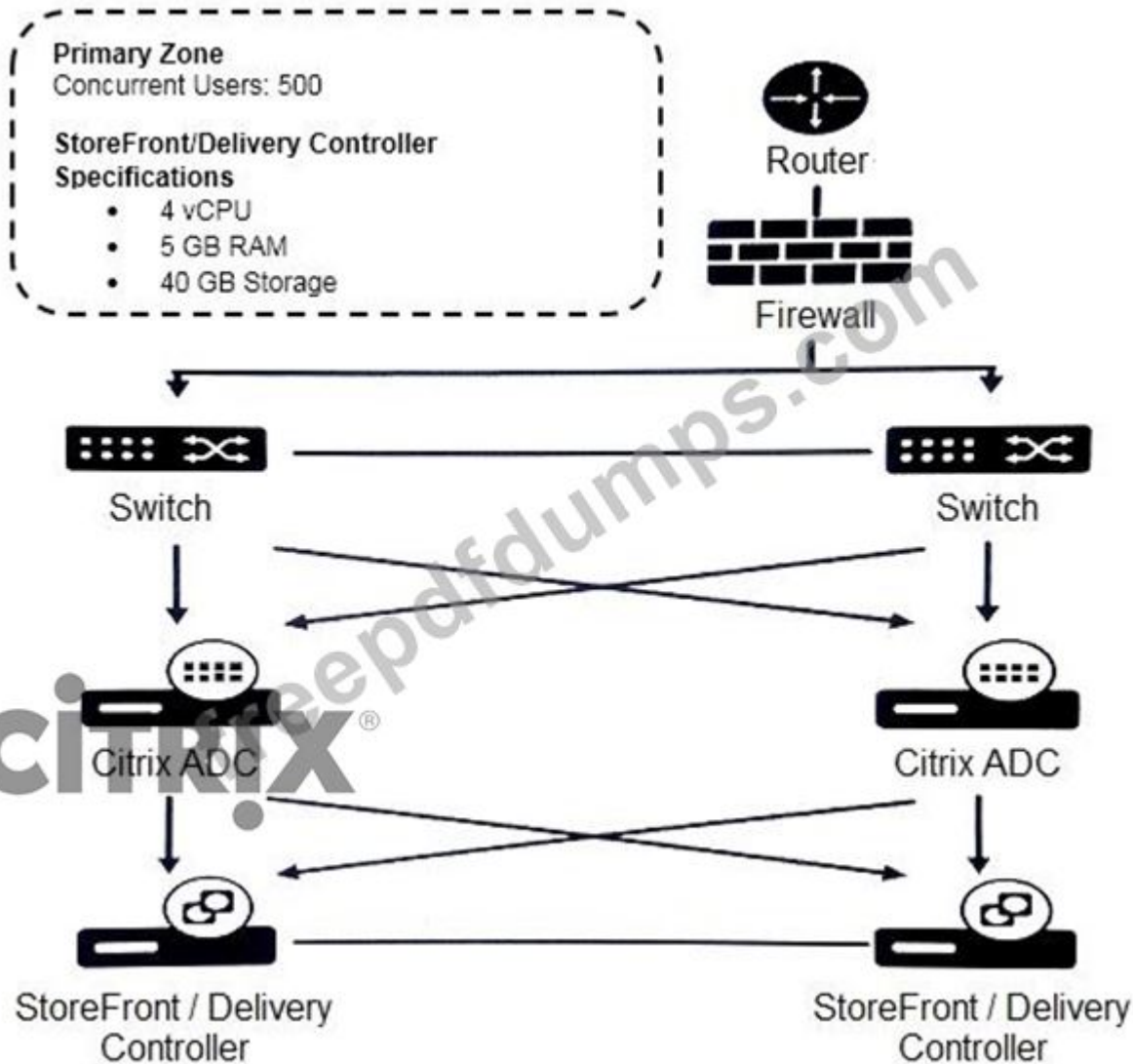
- A. Availability sets with fault domain
- B. Availability zones
- C. Resource group
- D. Availability sets with update domain

**Answer: B ([LEAVE A REPLY](#))**

### **NEW QUESTION: 9**

Scenario: A Citrix Architect is designing a single-Site Citrix Virtual Apps and Desktops production environment. Through earlier design discussions, the architect has determined the environment details listed in the exhibit Click the Exhibit button to view the details.

## Dallas Data Center



What should the architect change in the current environment to align with Citrix leading practices?

- A. A Delivery Controller should be added to the Site.
- B. The Delivery Controller and StoreFront roles should NOT be co-located on the same server.
- C. A Delivery Controller should be removed from the Site.
- D. The existing Delivery Controller and StoreFront servers should be allocated an additional 2 GB of RAM each.
- E. The existing Delivery Controller and StoreFront servers should be allocated two additional CPUs each.

**Answer:** ([SHOW ANSWER](#))

### NEW QUESTION: 10

Scenario: A Citrix Architect is designing a new Citrix Virtual Apps and Desktops Service environment in Citrix Cloud. The customer previously installed all applications locally on managed laptops and desktops, but is willing to evaluate other application delivery methods as part of the new deployment. The environment will be standardized on Windows 10 and Windows Server 2016 for the Virtual Delivery Agent (VDA) machines.

As part of an application analysis performed earlier in the project, the information in the exhibit was collected regarding 1 of the required applications.

Click the Exhibit button to view the information.

Category	Detail
Application Name	Workday®
Description	Workday is an on-demand (web-based) financial management and human capital management application.
Usage	The application will be used by most employees in the organization.
OS Compatibility	The application is compatible with the target operating systems.
Special Considerations	Users must be subscribed to the application.  To manage security, the application must be hosted and managed by another vendor and provided to the end user.

The customer has the additional objective of minimizing authentication cycles for users with no configuration efforts on user machines.

How should the architect publish the application?

- A. Through Citrix Gateway as a Web/SaaS application
- B. Through the Citrix Gateway Service as a Web/SaaS application
- C. As a streamed application using Microsoft App-V
- D. From Citrix Virtual Apps and Desktops Service

**Answer: D (LEAVE A REPLY)**

### NEW QUESTION: 11

Scenario: A Citrix Architect needs to design a new XenApp and XenDesktop environment.

The architect has identified the access requirements listed in the Exhibit.

Click the Exhibit button to view the requirements.

User Groups	Endpoint	Authentication	Receiver Type	Deploy Receiver Client	Resource Filtering	External Access Required
Accountants	Corporate-owned	Smart Card	Receiver 4.10	Yes	No	No
Executives	BYOD	Username & Password	HTML5	Yes	No	Yes
Graphic Designers	Mac BYOD	Username & Password	MAC Receiver 4.10	Yes	No	No
Customer Service	Corporate-owned	Anonymous Access	Receiver 4.10	Yes	No	Yes

A single store has already been configured with the following settings, every other setting has been kept as a default.

Username/Password authentication

- No resource filtering
- NetScaler Gateway is configured for authentication
- No IIS redirection
- Deploy Receiver 4.10 installer

The architect needs to evaluate whether the current store, which cannot be changed, meets the requirements of the user groups and needs to determine how many additional stores are required.

How many additional StoreFront stores does the architect need to support the requirements shown in the Exhibit?

- A. 1
- B. 4
- C. 3
- D. 5
- E. 2

**Answer: C (LEAVE A REPLY)**

Note: 3 additional ones

1 store for smart card

1 store for anonymous

1 store for HTML5

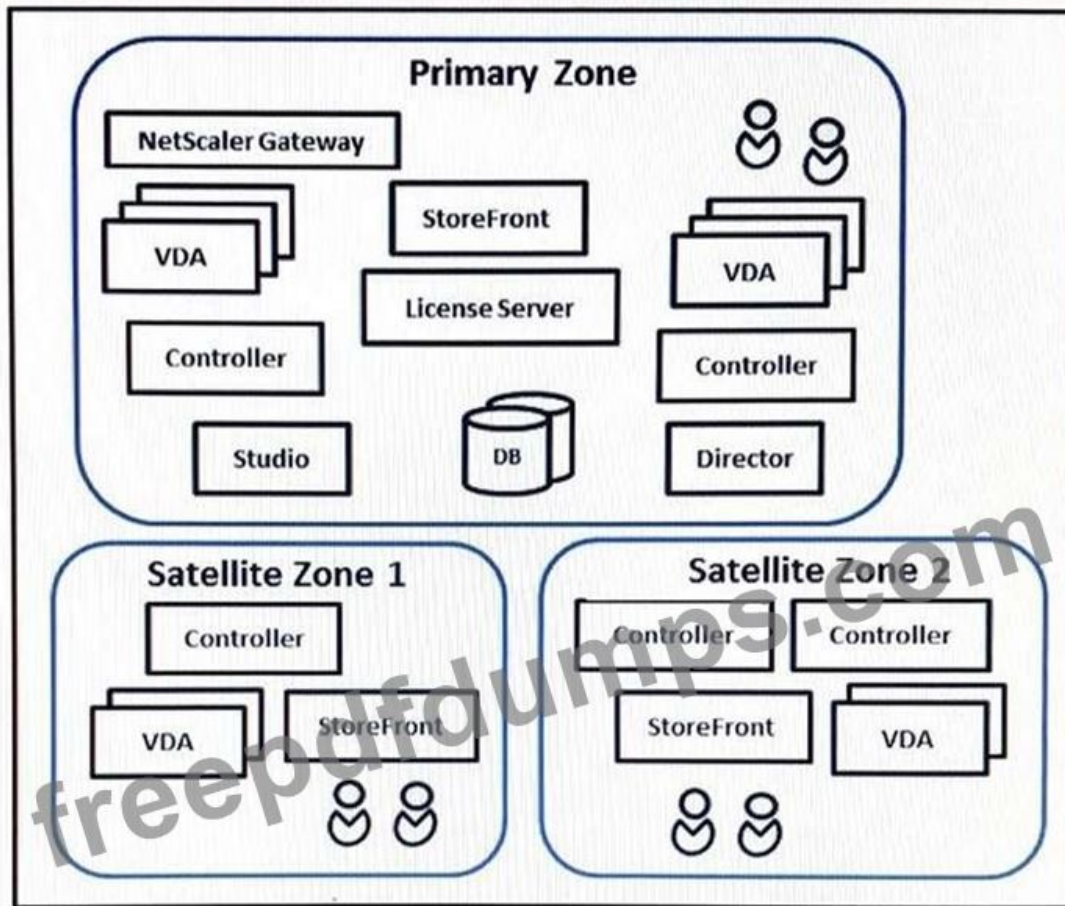
I would personally use a store with Smart Card, U&P, and GW. Then i'd only need 2 more stores - 1 for Anonymous and 1 for HTML5. However, the question says the U&P/GW store can't be changed, so you need a separate store for Smart Card users. Therefore you need 3 more stores... for a total of 4.

Really weird to give your 4 different entries in an Authentication Matrix and you end up needing 4 stores to accommodate them, but that's what they are going for.

### **NEW QUESTION: 12**

Scenario: A Citrix Architect needs to assess a XenApp and XenDesktop environment. The XenApp and XenDesktop diagram in the Exhibit gives details about the current Site and Zone design.

Click the Exhibit button to view the diagram.



Zone	Location	# VDA	Network	Latency
Primary Zone	New York	6,000	Dublin	100ms
			Hong Kong	300ms
Satellite Zone 1	Dublin	1,000	New York	100ms
			Hong Kong	100ms
Satellite Zone 2	Hong Kong	4,000	Dublin	100ms
			New York	300ms

What should the architect recommend based on the current Site and Zone design?

- A. Add an additional Delivery Controller to the Primary Zone.
- B. Replace Satellite Zone 2 with a separate XenDesktop Site.
- C. Add additional StoreFront servers to Satellite Zone 2.
- D. Replicate the XenDesktop Site database to Satellite Zone 2.

**Answer: B (LEAVE A REPLY)**

<https://docs.citrix.com/en-us/xenapp-and-xendesktop/7-15-ltsr/manage-deployment/zones.html>

When the network latency of your zones is more than 250 ms RTT, we recommend that you deploy multiple Sites instead of zones.

**NEW QUESTION: 13**

Scenario: A Citrix Architect is implementing a new Citrix Virtual Apps and Desktops environment. The IT team has purchased 1,000 Citrix Virtual Apps and Desktops Advanced licenses. Moving forward, the company requires the IT team to produce a report of all unsuccessful connections of Citrix Virtual Apps during the previous 12 months.

Which two actions does the architect need to take to support these requirements? (Choose two.)

- A. Configure 'GroomSessionsRetentionDays' to 365 days.
- B. Upgrade to Citrix Gateway Universal licenses.
- C. Implement Citrix Application Delivery Management.

<https://docs.citrix.com/en-us/citrix-virtual-apps-desktops/1912-ltsr/director/data-retention.html>

- D. Configure 'GroomFailuresRetentionDays' to 365 days.
- E. Upgrade to Citrix Virtual Desktops Premium licenses.

**Answer: ([SHOW ANSWER](#))**

#### **NEW QUESTION: 14**

Scenario: A Citrix Architect is designing a new Citrix Virtual Apps and Desktops environment for a marketing and design company. One department uses several 3D applications based on OpenGL. These applications run as hosted applications within a single virtual machine (VM) running on a single Citrix Hypervisor host. The host is configured with 2 physical GPUs running NVIDIA GRID technology.

Which HDX 3D Pro method should the architect use for these 3D applications?

- A. Software-virtualized GPU
- B. Pass-through GPU
- C. Hardware-virtualized GPU
- D. CUDA-virtualized GPU

**Answer: ([SHOW ANSWER](#))**

<https://docs.citrix.com/en-us/citrix-virtual-apps-desktops/graphics/hdx-3d-pro.html>

#### **NEW QUESTION: 15**

Scenario: A Citrix Architect is creating a conceptual architecture for a Citrix Virtual Apps and Desktops environment. Based on some initial the company's business goals and objectives, the architect has collected the information shown in the exhibit.

Click the Exhibit button to view the information.

Requirement	Detail
Number of Users	2,000
Data Centers	One on-premises data center
Available Hardware	Available hardware is limited, as all servers are in use at nearly full capacity.
Administrative Team	Three dedicated Citrix Administrators will be supported by the IT team members who are mostly at full capacity with maintenance and change tickets.
Level of Desired Control	Basic
Additional Considerations	The new solution should be highly available, where possible, and within a responsible financial budget.

Which delivery model should the architect recommend?

- A. Single-Site in Citrix Cloud, public cloud, and on-premises resource locations
- B. Multi-Site, multi-zone, and multiple on-premises data centers
- C. Multi-Site in Citrix Cloud, and multiple public cloud resource locations
- D. Single-Site, single-zone, and single on-premises data center

Answer: ([SHOW ANSWER](#))

### NEW QUESTION: 16

Scenario: A Citrix Architect needs to design a new XenApp and XenDesktop environment.

The architect has identified the access requirements listed in the Exhibit.

Click the Exhibit button to view the requirements.

User Groups	Endpoint	Authentication	Receiver Type	Deploy Receiver Client	Resource Filtering	External Access Required
Accountants	Corporate-owned	Smart Card	Receiver 4.10	Yes	No	No
Executives	BYOD	Username & Password	HTML5	Yes	No	Yes
Graphic Designers	Mac BYOD	Username & Password	MAC Receiver 4.10	Yes	No	No
Customer Service	Corporate-owned	Anonymous Access	Receiver 4.10	Yes	No	Yes

A single store has already been configured with the following settings, every other setting has been kept as a default.

Username/Password authentication

- 
- No resource filtering
- NetScaler Gateway is configured for authentication
- No IIS redirection
- Deploy Receiver 4.10 installer
- 

The architect needs to evaluate whether the current store, which cannot be changed, meets the requirements of the user groups and needs to determine how many additional stores are required.

How many additional StoreFront stores does the architect need to support the requirements shown in the Exhibit?

- A. 1
- B. 4
- C. 3
- D. 5
- E. 2

**Answer: C (LEAVE A REPLY)**

Note: 3 additional ones

1 store for smart card

1 store for anonymous

1 store for HTML5

I would personally use a store with Smart Card, U&P, and GW. Then i'd only need 2 more stores - 1 for Anonymous and 1 for HTML5. However, the question says the U&P/GW store can't be changed, so you need a separate store for Smart Card users.

Therefore you need 3 more stores... for a total of 4. Really weird to give your 4 different entries in an Authentication Matrix and you end up needing 4 stores to accommodate them, but that's what they are going for.

**Valid 1Y0-403 Dumps** shared by Actual4test.com for Helping Passing 1Y0-403 Exam!  
Actual4test.com now offer the **newest 1Y0-403 exam dumps**, the Actual4test.com 1Y0-403 exam **questions have been updated** and **answers have been corrected** get the **newest** Actual4test.com 1Y0-403 dumps with Test Engine here:

[https://www.actual4test.com/1Y0-403\\_examcollection.html](https://www.actual4test.com/1Y0-403_examcollection.html) (244 Q&As Dumps, **30%OFF**

**Special Discount: Freepdfdumps)**

#### **NEW QUESTION: 17**

Scenario: A Citrix Architect is investigating a recent change that is impacting system performance of the Provisioning Services farm. However, no actions have been recorded in the Audit Trail. Which two processes are preventing Provisioning Services auditing from recording the actions? (Choose two.)

- A. The change was completed through the SCCM integration.
- B. A task was performed using Provisioning Services PowerShell interface.
- C. A task was performed using Management Command Line Interface (MCLI).
- D. The Provisioning Services database was unavailable.
- E. Auditing is disabled by default.

**Answer: D,E (LEAVE A REPLY)**

<https://docs.citrix.com/en-us/provisioning/current-release/troubleshooting/auditing.html> Citrix Provisioning provides an auditing tool that records configuration actions on components within the provisioning farm. The auditing tool saves this information to the provisioning database.

To enable auditing

In the Citrix Provisioning console tree, right-click on the farm, then select the Farm Properties menu option.

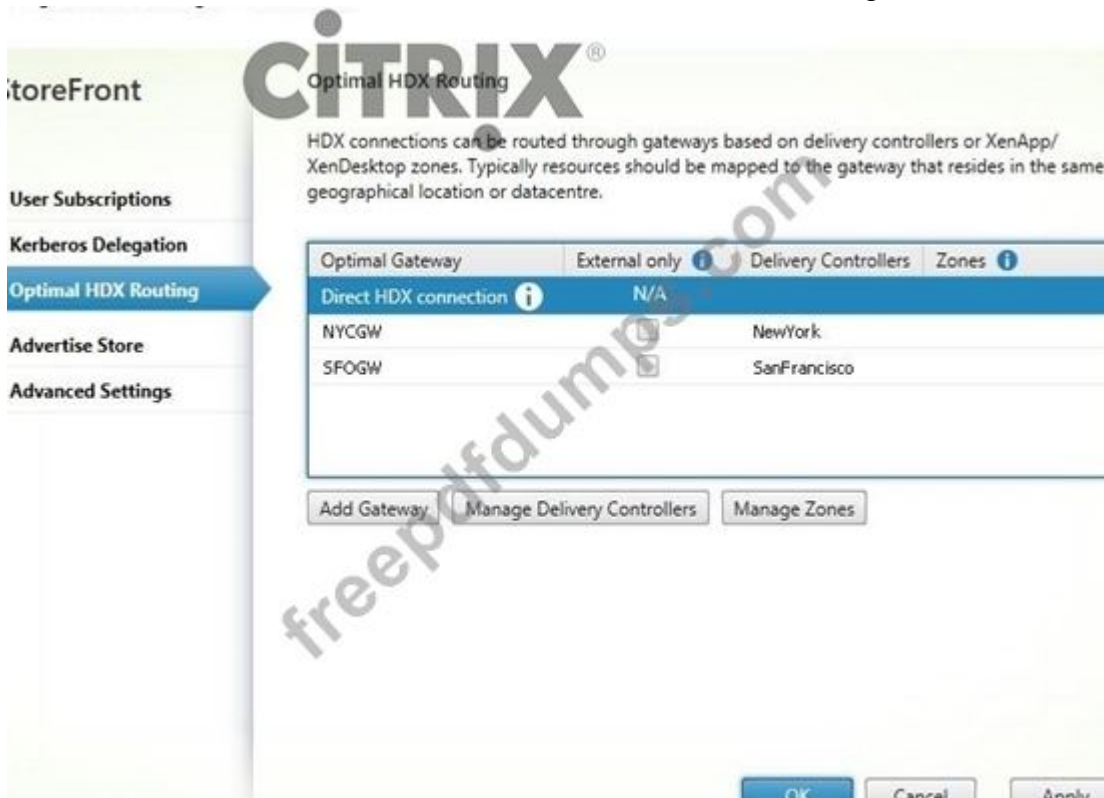
On the Options tab, under Auditing, check the Enable auditing check box.

**NEW QUESTION: 18**

Scenario: A Citrix Architect needs to design a new XenApp and XenDesktop environment. While deploying Optimal HDX Routing for the customer, the architect makes the following configurations:

- Authentication Gateway - AuthGW - Logon.workspace.com - Authentication only
- New York Gateway - NYCGW - Nycgw.workspace.com - HDX Routing only
- San Francisco Gateway - SFOGW - Sfogw.workspace.com - HDX Routing only

Click the Exhibit button to view further details about the configuration.



Upon investigation of the load on the NetScalers, the architect determines that both internal and external HDX traffic flow through the NetScaler Gateways and the NetScalers are running at capacity.

Which PowerShell commandlet and parameter can help the architect address this issue until more NetScaler resources are procured?

- A. Set-DSOptimalGatewayForFarms -onDirectAccess=true
- B. Set-DSOptimalGatewayForFarms -onDirectAccess=false
- C. Set-STFCitrixAGBasicOptions -onDirectAccess=false
- D. Set-STFCitrixAGBasicOptions -onDirectAccess=true

**Answer: B (LEAVE A REPLY)**

### NEW QUESTION: 19

Scenario: A Citrix Architect needs to design a new XenApp and XenDesktop environment. Currently, the environment is configured with two locations with identical XenDesktop Sites. Each Site has two Delivery Controllers, two StoreFront servers, and one NetScaler high availability pair. The same applications have been published from both Sites for all the users. Two Zones (Zone A and Zone B) are configured in each Site with one Controller in each zone. The Microsoft Exchange server is only accessible from Virtual Delivery Agent (VDA) machines in Zone A in each Site.

The following access requirements have been identified:

Users should have a single URL when accessing resources from different Sites.

Users should always connect to the datacenter closest to their location.

Applications added to Favorites within Citrix Receiver should be retained when accessed from different Sites.

Launched applications and desktops should always connect through a local NetScaler.

No duplication of applications published from different Sites.

Microsoft Outlook should always launch in Zone A.

The architect should recommend configuring Optimal Gateway routing on \_\_\_\_\_ across both locations to ensure that users connect through a local NetScaler. (Choose the correct option to complete the sentence.)

- A. Delivery Controllers
- B. StoreFront servers
- C. Global Server Load Balancing (GSLB) vServers
- D. NetScaler appliances

**Answer: B (LEAVE A REPLY)**

[https://www.citrix.com/content/dam/citrix/en\\_us/documents/white-paper/ns-optimal-gateway-routing-tech-wp.pdf](https://www.citrix.com/content/dam/citrix/en_us/documents/white-paper/ns-optimal-gateway-routing-tech-wp.pdf) The NetScaler Gateway Routing solution essentially de-couples or separates the initial logon Gateway from the HDX launch Gateway, based on where the app or desktop is located, not where you log on.

Configuring the NetScaler Gateway routing behavior is straight-forward. There is no special configuration needed on the NetScaler; however, you must have NetScaler 11.0 build 66.11 or later installed on all of your NetScaler Gateway devices. The configuration items necessary to enable NetScaler Gateway Routing are completed on the Citrix StoreFront servers. Note that you must have StoreFront version 3.x or later installed on all of your StoreFront servers, and that you must complete the configuration change on all of your StoreFront servers for NetScaler Gateway routing to work as expected.

**NEW QUESTION: 20**

Scenario: A large retail environment includes a StoreFront server group with 2 servers, each with 2 vCPUs and 4 GB of RAM. The server group handles about 25,000 user connections per hour, with the majority of users accessing the environment using the Citrix Workspace app. Workspace Control has been disabled for the environment.

A Citrix Architect learns that the company will soon merge with another retail chain. The Citrix Virtual Apps and Desktops environment must double its capacity, and the StoreFront server group is expected to handle about 40,000 user connections per hour.

What should the architect do to meet the expected load while maintaining high availability with optimal resource allocation for the StoreFront component?

- A. Allocate an additional 2 vCPUs to each existing StoreFront server.
- B. Enable Workspace Control for all StoreFront stores.
- C. Allocate an additional 2 GB of RAM to each existing StoreFront server.
- D. Train users to begin accessing the environment using Citrix Workspace app for Web site.
- E. Use the least connection method for load-balancing on Citrix ADC.

**Answer: A (LEAVE A REPLY)**

Explanation/Reference: <https://docs.citrix.com/en-us/tech-zone/design/reference-architectures/virtual-apps-and-desktops-service.html>

**NEW QUESTION: 21**

Scenario: A Citrix Architect is designing a new Citrix Virtual Apps and Desktops environment.

During the assessment, the architect determined the applications and characteristics.

Click the Exhibit button to view the list of applications and characteristics.

Application	Users	Deployment	Complexity	Resource Requirement	Peripheral Requirements
Application 1	Samantha and Robert	App Layer	High	Medium	Yes
Application 2	Human Resources (HR) Group	App-V	Low	Low	No
Application 3	Domain Users	Master Image	High	Medium	Yes
Application 4	Sales Group	Web App	Low	Low	No

To which application category does Application 1 belong, based on the information in the exhibit?

- A. User
- B. Common

C. Departmental

D. Management

**Answer: (SHOW ANSWER)**

**NEW QUESTION: 22**

Scenario: A Citrix Architect needs to design a new XenApp and XenDesktop environment. Currently, the environment is configured with two locations with identical XenDesktop Sites. Each Site has two Delivery Controllers, two StoreFront servers, and one NetScaler high availability pair. The same applications have been published from both Sites for all the users. Two Zones (Zone A and Zone B) are configured in each Site with one Controller in each zone. The Microsoft Exchange server is only accessible from Virtual Delivery Agent (VDA) machines in Zone A in each Site.

The following access requirements have been identified:

- Users should have a single URL when accessing resources from different Sites.

- Users should always connect to the datacenter closest to their location.

- Applications added to Favorites within Citrix Receiver should be retained when accessed from different

- Sites.

- Launched applications and desktops should always connect through a local NetScaler.

- No duplication of applications published from different Sites.

- Microsoft Outlook should always launch in Zone A.

The architect should recommend configuring Optimal Gateway routing on \_\_\_\_\_ across both locations to ensure that users connect through a local NetScaler. (Choose the correct option to complete the sentence.)

A. Delivery Controllers

B. StoreFront servers

C. Global Server Load Balancing (GSLB) vServers

D. NetScaler appliances

**Answer: B (LEAVE A REPLY)**

[https://www.citrix.com/content/dam/citrix/en\\_us/documents/white-paper/ns-optimal-gateway-routing-tech-wp.pdf](https://www.citrix.com/content/dam/citrix/en_us/documents/white-paper/ns-optimal-gateway-routing-tech-wp.pdf) The NetScaler Gateway Routing solution essentially de-couples or separates the initial logon Gateway from the HDX launch Gateway, based on where the app or desktop is located, not where you log on.

Configuring the NetScaler Gateway routing behavior is straight-forward. There is no special configuration needed on the NetScaler; however, you must have NetScaler 11.0 build 66.11 or later installed on all of your NetScaler Gateway devices. The configuration items necessary to enable NetScaler Gateway Routing are completed on the Citrix StoreFront servers. Note that you must have StoreFront version 3.x or later installed on all of your StoreFront servers, and that you

must complete the configuration change on all of your StoreFront servers for NetScaler Gateway routing to work as expected.

**NEW QUESTION: 23**

Scenario: A Citrix Architect needs to design a new XenApp and XenDesktop environment. While designing Universal Print server (UPS) for the customer, the architect is asked to ensure that the UPS design can handle 500 simultaneous print jobs per minute.

What must the architect deploy to support the load estimated by the customer?

- A. Two UPS servers and configure UPS for load balancing policy
- B. Ten UPS servers and configure UPS for load balancing policy
- C. Five UPS servers and configure NetScaler load balancing
- D. Two UPS servers and configure NetScaler load balancing
- E. Five UPS servers and configure UPS for load balancing policy
- F. Ten UPS servers and configure NetScaler load balancing

**Answer: E (LEAVE A REPLY)**

Double your scalability

Now that we know we can have multiple UPS instances setup (we've scaled to 16 UPS internally) and can fully utilize them all for connections, what else has improved and how can we use this new found feature? Previously, UPS could handle 50 concurrent active print jobs per minute. With XenApp and XenDesktop 7.9, UPS scalability has improved two-fold, to 100 concurrent active print jobs per minute.

So, let's scale that up to 5 UPS instances and you can have a sustained concurrent active print rate of 500 print jobs per minute across all 5 servers. Need more?

Try 1,000 concurrent active print jobs per minute across 10 UPS instances. Yes, UPS load balancing can and does scale linearly. This makes scaling and sizing for your environment a simple matter.

<https://www.citrix.com/blogs/2016/07/20/ups-load-balancing-in-xenapp-and-xendesktop-7-9/>

**NEW QUESTION: 24**

Scenario: IT management has decided which server hardware model to use for new XenApp and XenDesktop Sites and needs guidance on sizing the Hardware Layer.

Click the Exhibit button to view the host details.

Host Details	
Host Model	UCS B200 M4
Sockets	2
Cores per Socket	8
RAM	320 GB
Hyper Threading	Enabled
Storage	SAN storage
CPU over-subscription ratio	2:1

A Citrix Architect is planning to install XenServer 7.x on this host which will be used to host only XenApp servers.

How many XenApp servers can the architect deploy on the host if the plan includes allotting each XenApp server 4 vCPUs, considering the over subscription ratio?

- A. 12
- B. 4
- C. 6
- D. 8

**Answer: (SHOW ANSWER)**

Number of sockets 2 x Cores 8 = 16 cores x Hyperthreading = 32 / 4 vcpu per VM = 8 XA VM's

<https://deptive.co.nz/blog/citrix-xenapp-virtualization-best-practice-rule-1/>

### NEW QUESTION: 25

Scenario: While assessing the User Layer, a Citrix Architect finds that most of the internal users connect using corporate-owned laptops, desktop devices, and thin clients. Many of these laptops and desktop devices are running Windows 10, while the remainder of the machines are running Windows 7 and are in the process of being migrated to Windows 10. Some users also connect using personal devices.

What should the architect recommend to upgrade Citrix Receivers for internal Windows endpoints?

- A. The use of deployment tools for internal endpoints.
- B. The deployment of Enterprise software.
- C. Configure Receiver auto-updates through Citrix Cloud.
- D. Edit the Web.config file and set upgradeAtLogin to True.

**Answer: C (LEAVE A REPLY)**

Because they are already running 4.8 and above they can use auto-updates. The admin just needs to configure and enable it.

<https://eucweb.com/blog/199>

### NEW QUESTION: 26

After reviewing a Proof of Concept (PoC) environment for Citrix Virtual Apps and Desktops, the corporate security team advises that user access to Regedit, command line, and PowerShell must be disabled.

Which technology can a Citrix Architect use to address this requirement with the least amount of effort?

- A. Citrix ADC SmartControl
- B. Citrix Workspace Environment Management (WEM)

<https://docs.citrix.com/en-us/workspace-environment-management/current-release/reference/environmental-settings-registry-values.html>

- C. Citrix ADC Endpoint Analysis (EPA)
- D. Citrix policies

E. Citrix Workspace ADMX templates

Answer: B ([LEAVE A REPLY](#))

**NEW QUESTION: 27**

A Citrix Architect is designing the Access Layer for a company that supports active-active mode for Citrix Gateway, as well as an on-premises, two-factor authentication solution.

Which feature supports this requirement?

- A. High-availability pair
- B. Citrix Gateway Service
- C. Citrix ADC Cluster
- D. Citrix ADC Standard edition or higher

Answer: D ([LEAVE A REPLY](#))

**NEW QUESTION: 28**

Scenario: A Citrix Architect needs to design a new XenApp and XenDesktop environment.

The table in the Exhibit lists details about the requirements of the current user groups and their Virtual Delivery Agent (VDA) machine workloads.

Click the Exhibit button to view the table.

User	Scaling Priority	VDA Type	Workload Weight	CPU Overcommit	Virtual CPUs per VIM	VMs per Host	Users per VM
User Group 1	Scalability	Desktop	Heavy	4:1	2	56	1
User Group 2	User experience	Server	Medium	1:5:1	16	18	20
User Group 3	Scalability	Desktop	Medium	6:1	2	40	1
User Group 4	Scalability	Server	Medium	1:5:1	6	27	20

The architect should scale the hardware used to host the VMs for User Group 1 to GB of RAM.

(Choose the correct option to complete the sentence.)

- A. 256
- B. 128
- C. 384
- D. 196
- E. 64

Answer: C ([LEAVE A REPLY](#))

6 GB (heavy/scale) x 56 VM's per host = 336

User Workload	Operating System	vRAM Configured for Scale	vRAM Configured for Experience
Light	Windows 7	2 GB	3 GB
	Windows 10	2 GB	3 GB
	Windows 2012R2	256 MB per user	
	Windows 2016	320 MB per user	
Medium	Windows 7	3 GB	4 GB
	Windows 10	3 GB	4 GB
	Windows 2012R2	512 MB per user	
	Windows 2016	640 MB per user	
Heavy	Windows 7	6 GB	8 GB
	Windows 10	6 GB	8 GB
	Windows 2012R2	1024 MB per user	
	Windows 2016	1280 MB per user	

Table 21: vRAM Allocation

### NEW QUESTION: 29

Scenario: A Citrix Architect needs to design a disaster recovery (DR) XenApp and XenDesktop Site that will be hosted in Citrix Cloud and Microsoft Azure. The DR Site is expected to support 2,000 Desktop OS Virtual Delivery Agent (VDA) machines.

The architect should include \_\_\_\_\_ Cloud Connectors in the Azure resource location, each with a minimum of \_\_\_\_\_ vCPUs and \_\_\_\_\_ GB of RAM to avoid unnecessary over-provisioning of resources and follow Citrix leading practices. (Choose the correct option to complete the sentence.)

- A. 3; 2; 4
- B. 3; 4; 4
- C. 3; 4; 8
- D. 2; 4; 4
- E. 1; 2; 4
- F. 2; 4; 8

**Answer: D (LEAVE A REPLY)**

Handbook 7.15 LTSR: Testing has shown that a single Cloud Connector Controller, using the following configuration, can support 5,000 desktops = 4vCPU / 4GB RAM / 40GB shared storage on Win2012 R2.

### NEW QUESTION: 30

Scenario: A Citrix Architect needs to design a new XenApp and XenDesktop environment. Due to licensing and compliance reasons, the customer has requested that users connecting from external locations must NOT be presented with applications from the Microsoft Office suite.

How should the architect ensure that users are only presented with Microsoft Office applications when connecting to the environment from internal locations?

- A.** Configure a separate Store for external connections, configure keywords on all Microsoft Office applications, and use Set-DSResourceFilterKeyword to enable filtering.
- B.** Configure a separate Store for external connections, configure keywords on all Microsoft Office applications, and use Citrix ADC Content Switching to enable filtering.
- C.** Use the existing Store for external connections, configure keywords on all Microsoft Office applications, and use Set-DSResourceFilterKeyword to enable filtering.
- D.** Use the existing Store for external connections, configure keywords on all Microsoft Office applications, and use Citrix ADC Content Switching to enable filtering.

**Answer: (SHOW ANSWER)**

ADC content switching does not apply

<https://docs.citrix.com/en-us/netscaler/12/content-switching.html>

Content Switching enables the NetScaler appliance to direct requests sent to the same Web host to different servers with different content. For example, you can configure the appliance to direct requests for dynamic content (such as URLs with a suffix of .asp, .dll, or .exe) to one server and requests for static content to another server. You can configure the appliance to perform content switching based on TCP/IP headers and payload.

**NEW QUESTION: 31**

Scenario: A Citrix Architect needs to design a new XenApp and XenDesktop environment. The architect has identified the requirements, based on the assessment and early stages of the design.

Click the Exhibit button to view the requirements.

Design Topic	Design Decision
Deployment type	Public cloud – Microsoft Azure
Licensing	XenDesktop Platinum edition, user/device licenses
Max concurrent users	1,000
Images	<ul style="list-style-type: none"> <li>• Windows Server 2016 -1 FlexCast model: Published apps</li> <li>• Windows Server 2016 -2 FlexCast model: Published desktops</li> <li>• Windows 10 FlexCast model: Hosted VDI (Static, persistent)</li> </ul>
Primary Applications	<ul style="list-style-type: none"> <li>• Microsoft Office 2016: All users</li> <li>• Adobe Acrobat: All users</li> <li>• Internal sales application: Sales group (500 users)</li> <li>• Mozilla Firefox: Developers group (200 users)</li> <li>• Microsoft Office 2010: Accounting group (50 users)</li> <li>• HR App: HR managers only (15 users)</li> </ul>

Additionally, the IT team has identified the following general requirements:

- The provisioning strategy should be compatible with the planned design decisions

- The provisioning strategy should minimize the time required to perform image and application updates Which provisioning method should the architect use for the environment based on the design decisions and requirements shown?

- A. Machine Creation Services
- B. Provisioning Services
- C. Manual Provisioning
- D. Machine Creation Services with App Layering
- E. Provisioning Services with App Layering
- F. Manual Provisioning with App Layering

**Answer: D (LEAVE A REPLY)**

Note: It is not possible to use PVS in Azure you can use MCS or manually Provision VDAs or use azure Tools to Provision vms

<https://discussions.citrix.com/topic/397476-pvs-on-azure/>

<https://discussions.citrix.com/topic/406158-pvs-in-azure-status-of-development-support/>

**Valid 1Y0-403 Dumps** shared by Actual4test.com for Helping Passing 1Y0-403 Exam!

Actual4test.com now offer the **newest 1Y0-403 exam dumps**, the Actual4test.com 1Y0-403 exam **questions have been updated** and **answers have been corrected** get the **newest** Actual4test.com 1Y0-403 dumps with Test Engine here:

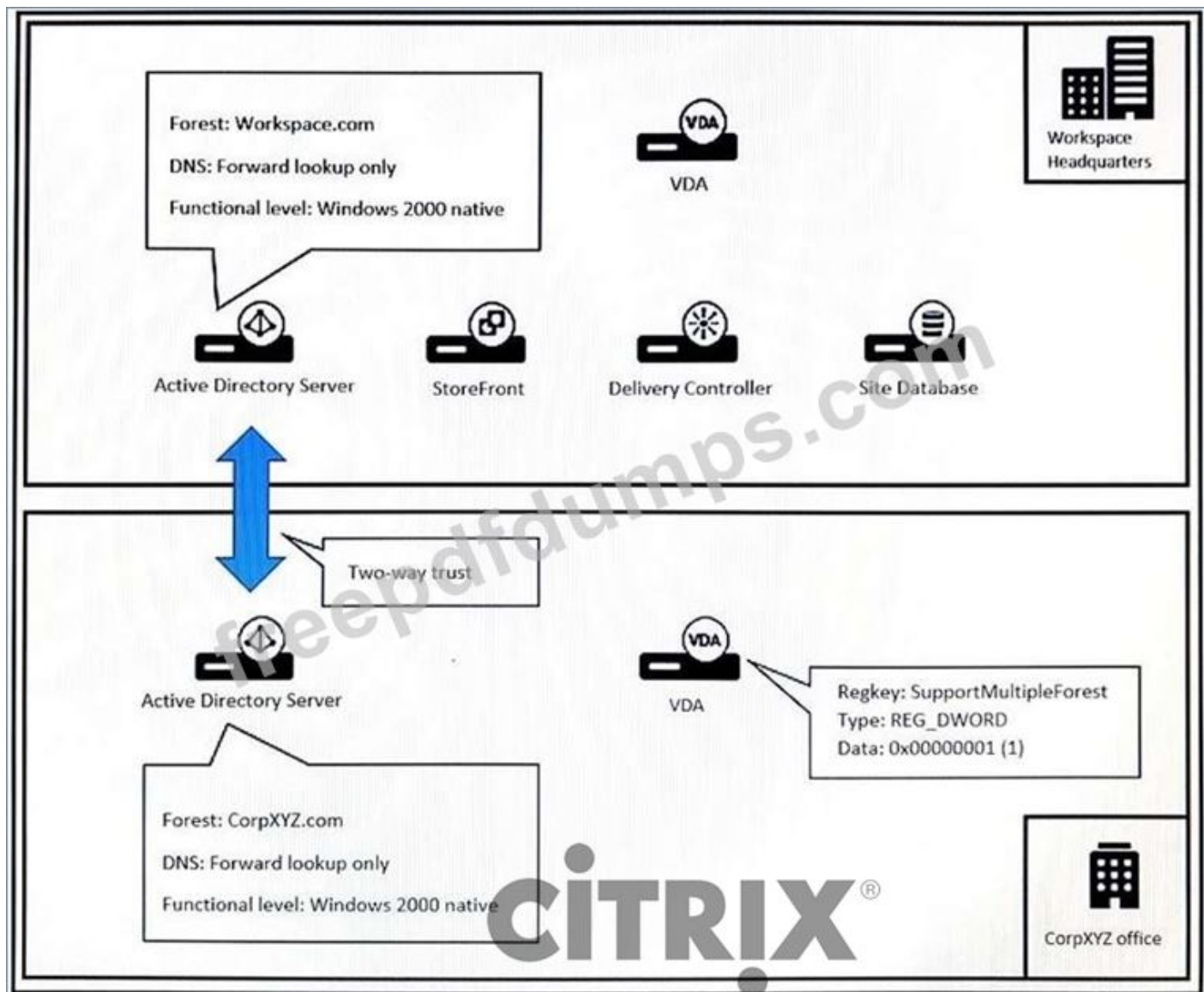
[https://www.actual4test.com/1Y0-403\\_examcollection.html](https://www.actual4test.com/1Y0-403_examcollection.html) (244 Q&As Dumps, **30%OFF**

**Special Discount: Freepdfdumps)**

### **NEW QUESTION: 32**

Scenario: A Citrix Architect is reviewing a XenApp and XenDesktop design for an environment with multiple Active Directory forests.

Click the Exhibit button to view the design details.



Which risk should the architect highlight to the customer, based on the details listed in the Exhibit?

- A. The SupportMultipleForest registry key is NOT supported.
- B. The Active Directory trust method is NOT supported.
- C. The Active Directory functional level is NOT supported.
- D. The DNS lookup strategy is NOT supported.

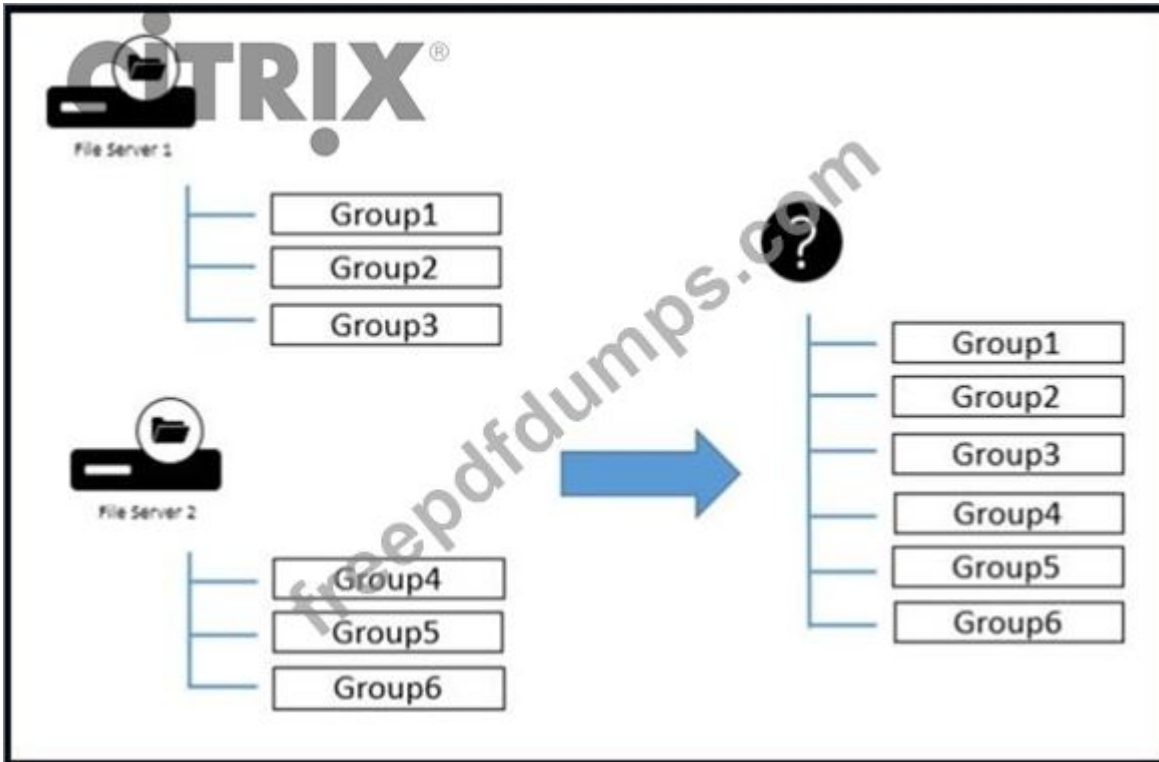
**Answer: D (LEAVE A REPLY)**

They need also a reverse lookup zone: <https://support.citrix.com/article/CTX134971> Further the image changed in the actual exam. The functional level server is now a Win2012 R2.

DNS, for name and reverse lookups. Depending on the approach taken, the use of DNS Forwarders and Conditional Forwarders, Forward /Reverse lookup zones and Stub zones are all acceptable for name lookup/resolution. As an example, in the preceding illustration, on the DNS server for Parent.local, a Secondary Forward Lookup Zone and a Reverse Lookup zone for Parent2.local has been added and similarly the opposite has been done on the Parent2.local. This means that the DDC should now be able to resolve the VDA by name and IP and the VDA resolves the DDC by name and IP address.

### NEW QUESTION: 33

Scenario: A Citrix Architect is configuring a Citrix Profile Management solution for a customer. The customer has two file servers, each hosting the profile folders for three different user groups. Review the Exhibit on the right for details about the configuration.



The customer wants to use: \\Workspace\Profiles\## as the profile location.

The architect should configure and to achieve the desired result.

(Choose the correct option to complete the sentence.)

- A. Load balancing; user variables
- B. DFS-Replication; Active Directory attributes
- C. DFS namespace; user variables
- D. DFS-Replication; user variables
- E. Load balancing; Active Directory attributes
- F. DFS namespace; Active Directory attributes

**Answer: F (LEAVE A REPLY)**

### NEW QUESTION: 34

A Citrix Architect is designing a new Citrix Virtual Apps and Desktops environment. The IT team maintains 12 Citrix Hypervisor hosts that are available to build the new Citrix environment. During the project kickoff meeting, management states:

"We need a robust infrastructure that can handle large user loads, improve IT efficiency, guarantee minimal downtime, and protect the network and its resources from corruption." Click the Exhibit button to view the existing infrastructure details.

Hardware/Network	Details
Citrix Hypervisors	Heterogeneous hosts use the same software version and patch levels.
Resource: CPU, Memory, etc.	Uses the same CPU vendor and similar CPU models, with each host containing 128 GB RAM. Local storage of 100 GB is available.
Network Storage	Network File System (NFS) is used for file storage. Linux GFS2 shared block storage is used for the hypervisor hosts.
Network	All hosts are on the same subnet, with similar static IP range on the management port.
Virtual Machines (VMs)	Virtual disks are on shared storage. No local DVD drive is configured.

Which configuration should the architect use to meet the requirements for the new Citrix environment?

- A. Create multiple resource pools with at least 3 hosts in each pool for the infrastructure and Citrix workloads, and enable high availability with clustered pools using local storage repositories.
- B. Create multiple resource pools with at least 3 hosts in each pool for the infrastructure and Citrix workloads, and enable high availability with clustered pools using GFS2 as the heartbeat storage repositories.
- C. Create a single resource pool containing all hosts for the infrastructure and Citrix workloads, and enable default high availability using NFS as the heartbeat storage repository.
- D. Create a single resource pool containing all hosts for the infrastructure and Citrix workloads, and enable default high availability using GFS2 as the heartbeat storage repository.

**Answer: B (LEAVE A REPLY)**

### NEW QUESTION: 35

Scenario: A Citrix Architect designing a new Citrix Virtual Apps and Desktops environment needs to determine which endpoints to include. Based on discussions with various departments, the user requirements listed in the exhibit were collected.

Click the Exhibit button to view the requirements.

User Group	Typical Location	High-security User Group?	FlexCast Model Used	Peripheral Requirements	User Mobility	User Workload
Finance	Internal	Yes	Published Apps	None	None	Low
Product Development	Internal	Yes	Static/Persistent Hosted Desktop	USB Printers	None	High
Sales	Roaming	No	Published Apps and Desktops	USB Printers and Projectors	High	Medium

In addition to the user requirements, the architect must address the organizational requirement of minimizing endpoint management effort.

Which endpoint type should the architect use for the Sales Group, based on the requirements?

- A. Bring-your-own device (BYOD) smartphone

- B. Corporate-owned smartphone
- C. Corporate-owned thin client
- D. Bring-your-own device (BYOD) laptop/notebook
- E. Corporate-owned laptop/notebook

**Answer: D (LEAVE A REPLY)**

### **NEW QUESTION: 36**

Scenario: A Citrix Architect designed an environment where policies will be deployed using Workspace Environment Management (WEM). The architect decided to install two WEM Infrastructure Services servers in order to meet the expected load in the environment.

What should the architect do to ensure that both servers can be utilized in the environment?

- A. Configure a load-balancing virtual IP (VIP) on a NetScaler appliance so that both servers can be actively receiving communications.
- B. Enter both server names in the Agent Host Configurations so that both servers will be actively contacted.
- C. Configure two virtual (VIPs) on a NetScaler appliance: one for the primary server, and one for the backup server.
- D. Enter both server names in the Agent Host Configuration; the first server listed will be contracted first; the second server will be in a standby capacity until needed.

**Answer: A (LEAVE A REPLY)**

### **NEW QUESTION: 37**

Scenario: A Citrix Architect needs to implement a new XenDesktop environment for an engineering company. The IT department has purchased 1,000 XenDesktop Enterprise licenses. They will deploy Microsoft Office productivity applications to all users. Users access XenApp sessions from company offices using thin client devices and remotely through NetScaler Gateway using personal devices.

The company requires IT to produce a report of all XenApp connection failures for the previous year.

Which two actions does the architect need to take to support these requirements? (Choose two.)

- A. Purchase XenDesktop Platinum licenses.
- B. Purchase NetScaler Gateway Universal licenses.
- C. Configure GroomSessionsRetentionDays to 365 days.
- D. Implement NetScaler Management and Analytics System (MAS).
- E. Configure GroomFailuresRetentionDays to 365 days.

**Answer: A,E (LEAVE A REPLY)**

You need Platinum (today Premium) for retention more than 31 days. And Default Value for GroomFailuresRetentionDays is 90 days.

- **Premium licensed Sites** - you can update the grooming retention settings above to any number of days.
- **Advanced licensed Sites** - the grooming retention for all settings is limited to 31 days.
- **All other Sites** - the grooming retention for all settings is limited to 7 days.

**Exceptions:**

- GroomApplicationInstanceRetentionDays can be set only in Premium licensed Sites.
- GroomApplicationErrorsRetentionDays and GroomApplicationFaultsRetentionDays are limited to 31 days in Premium licensed Sites.

	Setting name	Affected grooming	Default value Platinum (days)	Default value non-Platinum (days)
1	GroomSessionsRetentionDays	Session and Connection records retention after Session termination	90	7
2	GroomFailuresRetentionDays	MachineFailureLog and ConnectionFailureLog records	90	7
3	GroomLoadIndexesRetentionDays	LoadIndex records	90	7
4	GroomDeletedRetentionDays	Machine, Catalog, DesktopGroup, and Hypervisor entities that have a LifecycleState of 'Deleted'. This also deletes any related Session, SessionDetail,	90	7

**NEW QUESTION: 38**

Scenario: A Citrix Architect is designing a multi-data center Citrix Virtual Apps and Desktops environment that will use Citrix Provisioning (PVS) to manage Virtual Delivery Agent (VDA) machine images. Each data center will have a separate PVS farm. During design discussions, the architect created a diagram to depict the way in which vDisk files will be replicated among PVS farms, based on the available storage for the vDisk stores.

Click the Exhibit button to view the diagram.



Overall, the customer has identified 3 objectives for the image-replication process:

- \* Administrative time required to replicate images among farms must be minimized.
- \* The process must be usable by storage administrators without PVS farm administrative permissions.
- \* Pre-existing infrastructure and processes should be used where possible.

Which method should the architect use to replicate vDisk files among data centers?

- A. Microsoft Distributed File System Replication (DFSR) Namespaces
- B. SAN replication
- C. vDisk Replicator Utility
- D. Manual copy
- E. Scheduled RoboCopy commands

**Answer: B (LEAVE A REPLY)**

### NEW QUESTION: 39

Scenario: A Citrix Architect needs to design a new XenApp and XenDesktop environment. The customer previously installed all applications locally on managed laptops and desktops but is willing to evaluate other application delivery methods as part of the new deployment. The environment will be standardized on Windows 10 and Windows Server 2016 for the Virtual Delivery Agent (VDA) machines.

As part of an application analysis performed earlier in the project, the information shown in the Exhibit was collected regarding one of the required applications.

Click the Exhibit button to view the information.

Category	Detail
Application Name	Workspace Inventory 3.0
Description	Inventory tracker and management software - Most end users will use this application to perform data entry tasks, while managers will use the application to view data and create reports.
Usage	This application will be used by most employees in the organization.
OS Compatibility	The application is compatible with the target operating systems.
Special Considerations	N/A

Additionally, the customer has the following objectives:

- Minimize the amount of additional infrastructure components.
- Utilize thin clients as endpoints in order to reduce costs.
- Users should NOT have direct access to the thin client operating system.

How should the architect install the application?

- A. Directly on a VDA machine image and accessed through a virtual desktop session
- B. On an Application Layer using Citrix App Layering and included in a layered image and accessed through a virtual desktop session
- C. Directly on endpoint devices and included in a virtual desktop session using the Local App Access feature
- D. Stream it to a VDA machine using Microsoft App-V and accessed through a virtual desktop session
- E. On an Application Layer using Citrix App Layering then presented to assigned users as an Elastic Layer during a virtual desktop session

**Answer: A (LEAVE A REPLY)**

A would be easier. App Layering needs additional infrastructure.

**NEW QUESTION: 40**

Scenario: A Citrix Architect is designing a new Citrix Virtual Apps and Desktops environment. The table in the exhibit lists details about the requirements of the current user groups and their Virtual Delivery Agent (VDA) machine workloads.

Click the Exhibit button to view the table.

User Group	Scaling Priority	VDA Type	Workload Weight	CPU Overcommit	Virtual CPUs per VM	VMs per Host	Users per VM
User Group 1	Scalability	Desktop	Medium	8:1	2	40	1
User Group 2	User Experience	Server	Medium	1.5:1	6	16	20
User Group 3	Scalability	Desktop	Heavy	6:1	4	36	1
User Group 4	Scalability	Server	Medium	1.5:1	6	27	20

The architect should scale the hardware used to host the virtual machines (VMs) for User Group 1 to

\_\_\_\_\_ cores. (Choose the correct option to complete the sentence.)

- A. 96
- B. 64
- C. 16
- D. 32
- E. 24

**Answer: E (LEAVE A REPLY)**

**NEW QUESTION: 41**

Scenario: IT management has decided which server hardware model to use for new XenApp and XenDesktop Sites and needs guidance on sizing the Hardware Layer.

Click the Exhibit to view the host details.

Host Details	
Host Model	UCS B200 M4
Sockets	2
Cores per Socket	8
RAM	320 GB
Hyper Threading	Enabled
Storage	SAN storage

A Citrix Architect is planning to install XenServer 7.x on this host. How many vCPUs will be available to the XenServer host?

- A. 8
- B. 24
- C. 32
- D. 16

**Answer: C (LEAVE A REPLY)**

Number of sockets 2 x Cores 8 = 16 cores x Hyperthreading = 32

<https://deptive.co.nz/blog/citrix-xenapp-virtualization-best-practice-rule-1/> For example, take a host with dual hex core CPUs with hyperthreading enabled. Physical CPU cores: 2 x 6 = 12  
 Logical CPU cores: 12 x 2 = 24 So with this host no more than 24 vCPUs should be assigned to XenApp VMs.

<https://docs.citrix.com/en-us/xenapp-and-xendesktop/7-15-ltsr/citrix-vdi-best-practices/design/design-userlayer5.html>

**NEW QUESTION: 42**

A Citrix Architect needs to enable the security of the Virtual Delivery Agent (VDA) by evaluating the 'Enable- VdaSSL.ps1 -Enable' script.

Which supported SSL protocol version is least secure when using the default settings of the script?

- A. TLS 1.0
- B. SSL 3.0
- C. TLS 1.2
- D. TLS 1.1
- E. SSL 1.0
- F. SSL 2.0

**Answer: (SHOW ANSWER)**

Reference:

<https://docs.citrix.com/en-us/xenapp-and-xendesktop/7-15-ltsr/secure/tls.html>

**NEW QUESTION: 43**

Scenario: A customer who installed all applications locally on managed laptops and desktops is willing to evaluate other application delivery methods as part of a new design created by a Citrix

Architect. The environment will be standardized on Windows 10 and Windows Server 2016 for the Virtual Delivery Agent (VDA) machines.

As part of an application analysis performed earlier in the project, the information shown in the exhibit was collected regarding 1 of the required applications.

Click the Exhibit button to view the information.

Category	Detail
Application Name	Workspace Inventory 3.0
Description	The inventory tracker and management software will be used by most users to perform data entry tasks.  Managers will use the application to view data and create reports.
Usage	The application will be used by most employees in the organization.
OS Compatibility	The application is compatible with the target operating systems.
Special Considerations	None

Additionally, the customer has 3 objectives:

Minimize the amount of additional infrastructure components.

Utilize thin clients as endpoints in order to reduce costs.

Prohibit direct user access to the thin client operating system.

How should the architect install the application?

- A. Install it on an Application Layer using Citrix App Layering and include it in a layered image, and access it through a virtual desktop session.
- B. Install it directly on a VDA machine image and access it through 2 virtual desktop session.
- C. Install it on an Application Layer using Citrix App Layering, then present it to assigned users as an Elastic Layer during a virtual desktop.
- D. Install it directly on endpoint devices, and include it in a virtual desktop session using the Local App Access feature.
- E. Stream it to a VDA machine using Microsoft App-V and access it through a virtual desktop session.

**Answer: B (LEAVE A REPLY)**

#### **NEW QUESTION: 44**

Scenario: A Citrix Architect is designing a new Citrix Virtual Apps and Desktops environment. The environment will utilize Citrix Provisioning (PVS) for image management of physical and virtual machines (VMs). Upon review of the current network infrastructure, the architect determined a number of considerations that will impact the overall imaging process.

Click the Exhibit button to view the existing internal network and PVS infrastructure details.

Network Architecture	Network Hardware/Servers	Target Devices
Single DNS Active Directory (AD) domain	Four Citrix Provisioning (PVS) servers	100 Target Devices (mix of physical and virtual machines)
One PVS Farm with 2 Sites, each containing 2 PVS servers  PVS Site 1 on Subnet A PVS Site 2 on Subnet B	Routers between Subnet A and Subnet B have all required ports configured for necessary services	Auto negotiation is enabled on the NIC of target devices
	No internal firewalls	
10 Gbps NICs, running full duplex mode on PVS servers and target devices	PVS vDisks are replicated between each PVS server	

What should the architect do to optimize the Citrix Provisioning server to target device communication and the streaming process?

- A. Enable Subnet Affinity and set to None
- B. Enable Subnet Affinity and set to Fixed
- C. Enable Replication and set to Best Effort
- D. Enable Replication and set to Fixed

**Answer: B (LEAVE A REPLY)**

#### NEW QUESTION: 45

Scenario: A Citrix Architect is designing a new Citrix Virtual Apps and Desktops environment. The design will require three different StoreFront stores and three corresponding Citrix Workspace app for Web sites.

Each different store and Citrix Workspace app for Web site will serve different business units.

Each of these will also require its own branding and SSL certificate. The solution should remain supported by Citrix.

The architect has already installed StoreFront on a server.

How can the architect achieve the desired design while keeping cost and maintenance requirements to a minimum?

- A. Deploy two extra virtual servers, bind the certificates in Internet Information Services (IIS) Manager, and install StoreFront on each new virtual server.
- B. Create two extra Internet Information Services (IIS) sites, bind the certificates in IIS Manager, copy the StoreFront configurations to the two new IIS sites, and use a text editor to configure all three StoreFront stores.
- C. Create two extra Internet Information Services (IIS) sites, bind the certificates in IIS Manager, use PowerShell to deploy additional stores to the two new IIS sites, and use a text editor to configure all three StoreFront stores.
- D. Create two extra Internet Information Services (IIS) sites, bind the certificates in IIS Manager, copy the StoreFront configuration to the two new IIS sites, and use the StoreFront console to configure all three StoreFront stores.

**Answer: A (LEAVE A REPLY)**

### NEW QUESTION: 46

Scenario: A Citrix Architect is designing a pod-based architecture in a Citrix Virtual Apps and Desktops environment. The plan is to create three pods for different Resource Layer types:

- Windows 10 VDI (non-persistent)
- Windows Server 2016 hosted shared desktops (non-persistent)
- Windows 10 VDI (persistent)

Which three components can be shared between the three pods? (Choose three.)

- A. Citrix Delivery Controller
- B. Citrix StoreFront
- C. Citrix License Server
- D. Citrix Director
- E. Citrix Site Database

**Answer: B,C,D (LEAVE A REPLY)**

**Valid 1Y0-403 Dumps** shared by Actual4test.com for Helping Passing 1Y0-403 Exam!

Actual4test.com now offer the **newest 1Y0-403 exam dumps**, the Actual4test.com 1Y0-403 exam **questions have been updated** and **answers have been corrected** get the **newest** Actual4test.com 1Y0-403 dumps with Test Engine here:

[https://www.actual4test.com/1Y0-403\\_examcollection.html](https://www.actual4test.com/1Y0-403_examcollection.html) (244 Q&As Dumps, **30%OFF**

**Special Discount: Freepdfdumps)**

### NEW QUESTION: 47

A Citrix Architect needs to conduct a capabilities assessment for an organization that wants to design and build a new XenApp and XenDesktop environment.

Which four capabilities will directly influence whether users are currently able to connect to an alternative datacenter if the primary datacenter becomes unavailable? (Choose four.)

- A. Client devices and mobility requirements
- B. Windows Server and Active Directory environment
- C. Disaster recovery plan and implementation
- D. Network architecture
- E. Existing access infrastructure
- F. Current hypervisor and storage solutions
- G. Existing XenApp and XenDesktop environments

**Answer: A,B,D,E (LEAVE A REPLY)**

### NEW QUESTION: 48

Scenario: A Citrix Architect is creating a conceptual architecture for a Citrix Virtual Apps and Desktops environment. Based on some initial the company's business goals and objectives, the architect has collected the information shown in the exhibit.

Click the Exhibit button to view the information.

Requirement	Detail
Number of Users	2,000
Data Centers	One on-premises data center
Available Hardware	Available hardware is limited, as all servers are in use at nearly full capacity.
Administrative Team	Three dedicated Citrix Administrators will be supported by the IT team members who are mostly at full capacity with maintenance and change tickets.
Level of Desired Control	Basic
Additional Considerations	The new solution should be highly available, where possible, and within a responsible financial budget.

Which delivery model should the architect recommend?

- A. Single-Site, single-zone, and single on-premises data center
- B. Multi-Site in Citrix Cloud, and multiple public cloud resource locations
- C. Multi-Site, multi-zone, and multiple on-premises data centers
- D. Single-Site in Citrix Cloud, public cloud, and on-premises resource locations

**Answer: D (LEAVE A REPLY)**

#### NEW QUESTION: 49

Scenario: A Citrix Architect is developing a Citrix Provisioning (PVS) design for a healthcare organization. The initial design places all PVS farm components in the primary data center of the organization. The customer asks if the vDisk can be streamed from PVS servers in the primary data center to target devices located in a secondary data center in another region, while still maintaining good performance. The data centers are connected with a 10 GB link with approximately 20 ms of latency.

The architect recommends against the organization pursuing this approach. Which statement is a relevant reason for this recommendation?

- A. This configuration would introduce excessive latency in streaming traffic.
- B. This configuration does NOT provide sufficient connectivity between PVS servers and the farm database.
- C. This configuration prevents the Subnet Affinity feature from being implemented.
- D. This configuration does NOT provide sufficient bandwidth for streaming traffic.

**Answer: (SHOW ANSWER)**

Reference:

<https://support.citrix.com/article/CTX220651>

### NEW QUESTION: 50

Scenario: A Citrix Architect needs to design a new XenApp and XenDesktop environment. The table in the Exhibit lists details about the requirements of the current user groups and their Virtual Delivery Agent (VDA) machine workloads.

Click the Exhibit button to view the table.

User	Scaling Priority	VDA Type	Workload Weight	CPU Overcommit	Virtual CPUs per VIM	VMs per Host	Users per VM
User Group 1	Scalability	Server	Medium	1.5:1	6	16	20
User Group 2	User experience	Desktop	Heavy	6:1	4	36	1
User Group 3	Scalability	Desktop	Medium	6:1	2	40	1
User Group 4	Scalability	Server	Medium	1.5:1	6	27	20

The architect should scale the hardware used to host the VMs for User Group 1 to \_\_\_\_\_ cores. (Choose the correct option to complete the sentence.)

- A. 32
- B. 24
- C. 16
- D. 96
- E. 64

**Answer: E (LEAVE A REPLY)**

$$\text{pCPUs} = (\text{VMs} * \text{vCPUs per VM}) / \text{vCPU:pCPU Overcommit Ratio} = 16 * 6 / 1.5 = 64$$

### NEW QUESTION: 51

Scenario: A Citrix Architect is designing a new, 2,000-user XenApp and XenDesktop environment. The environment will use Windows Server 2016 for all Site infrastructure components (Delivery Controllers, StoreFront servers, Provisioning Services servers, Citrix Director). Provisioning Services (PVS) will be used to provision Virtual Delivery Agent (VDA) machines. The environment will include two primary use cases:

- Windows Server 2016 VDA machines providing hosted apps
- Windows 10 VDA machines providing random, non-persistent VDI

Within the company there is existing hardware which is hosting non-Citrix workloads. The hardware, which is using a third party hypervisor, has some spare capacity, but NOT enough to support the entire XenApp and XenDesktop environment. As a result, the IT team is planning to purchase additional hardware to support the expected capacity but has NOT determined which hypervisor will be used for that hardware.

The IT team would like to utilize the existing hardware and wants to minimize the long-term costs of the solution while still providing a good user experience.

How should the architect design the hypervisor resource pools based on Citrix leading practice?

- A. Build new third-party clusters and build all VDA machines and PVS servers in those clusters. Build other Citrix infrastructure components in one of the existing third-party clusters.

**B.** Build new XenServer resource pools and build all VDA machines and PVS servers in those pools.

Build other Citrix infrastructure components in one of the existing third-party clusters.

**C.** Build new XenServer resource pools and build all Windows 10 VDA machines in those pools. Build all Windows Server 2016 components in the existing third-party clusters.

**D.** Build new XenServer resource pools and build all XenApp and XenDesktop components in those pools.

**E.** Build new third-party clusters and build all Windows 10 VDA machines in those clusters. Build all Windows Server 2016 components in the existing third-party clusters.

**F.** Build new third-party clusters and build all XenApp and XenDesktop components in those clusters.

**Answer: A,C ([LEAVE A REPLY](#))**

### **NEW QUESTION: 52**

Scenario: A large retail environment includes a StoreFront server group with 2 servers, each with 2 vCPUs and 4 GB of RAM. The server group handles about 25,000 user connections per hour, with the majority of users accessing the environment using the Citrix Workspace app. Workspace Control has been disabled for the environment.

A Citrix Architect learns that the company will soon merge with another retail chain. The Citrix Virtual Apps and Desktops environment must double its capacity, and the StoreFront server group is expected to handle about 40,000 user connections per hour.

What should the architect do to meet the expected load while maintaining high availability with optimal resource allocation for the StoreFront component?

**A.** Train users to begin accessing the environment using Citrix Workspace app for Web site.

**B.** Allocate an additional 2 vCPUs to each existing StoreFront server.

**C.** Allocate an additional 2 GB of RAM to each existing StoreFront server.

**D.** Use the least connection method for load-balancing on Citrix ADC.

**E.** Enable Workspace Control for all StoreFront stores.

**Answer: B ([LEAVE A REPLY](#))**

### **NEW QUESTION: 53**

Which piece of License Server information does a Citrix Administrator need in order to allocate and download the XenDesktop license file from mycitrix.com?

**A.** IP Address

**B.** MAC Address

**C.** Hostname

**D.** FQDN

**Answer: ([SHOW ANSWER](#))**

### **NEW QUESTION: 54**

Scenario: A Citrix Architect is designing a new Citrix Virtual Apps and Desktops environment. The customer previously installed all applications locally on managed laptops and desktops but is willing to evaluate other application delivery methods as part of the new deployment. The environment will be standardized on Windows 10 and Windows Server 2016 for the Virtual Delivery Agent (VDA) machines.

As part of an application analysis performed earlier in the project, the information in the exhibit was collected regarding 1 of the required applications.

Click the Exhibit button to view the information.

Category	Detail
Application Name	Workspace Lidar Analyzer
Description	The application processes and generates reports using large amounts of imaging data collected from a Lidar scanner attached to the user endpoint.
Usage	The application is used by 5 technicians in the Research and Development (R&D) department.
OS Compatibility	The application is compatible with the target operating systems.
Special Considerations	Technicians must frequently reference this application's data when making log entries in a different application that, for security reasons, is only available through a virtual desktop session.  Technicians must occasionally conduct outdoor field experiments with the Lidar scanner, and must connect to the environment using a wireless mobile connection.

The customer has the additional objective of minimizing the amount of network traffic in the environment, particularly on WAN or metered links.

How should the architect deploy the application?

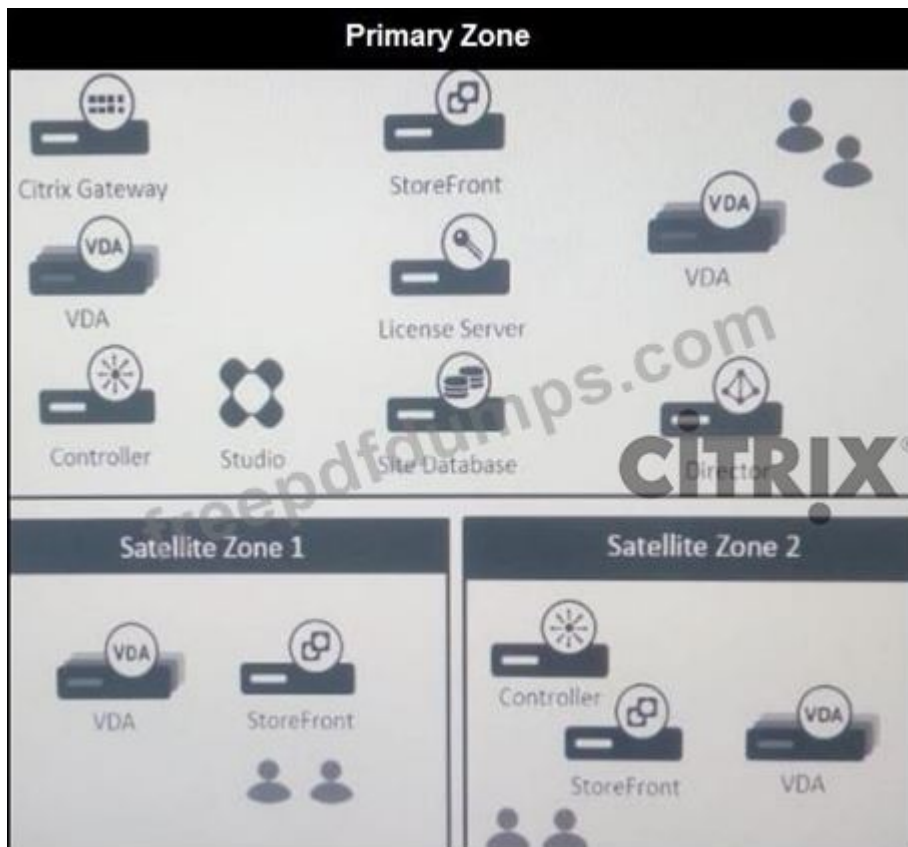
- A. Install it in the Application Layer using Citrix App Layering
- B. Install it directly on a Server OS VDA machine, and access it from the endpoint as a published application
- C. Install it directly on endpoint devices, and include it in a virtual desktop session using the Local App Access feature
- D. Stream it to a VDA machine using Microsoft App-V, and access it through a virtual desktop session
- E. Install it directly on a VDA machine image, and access it through a virtual desktop session

**Answer: E (LEAVE A REPLY)**

### NEW QUESTION: 55

Scenario: A Citrix Architect needs to access a XenApp and XenDesktop environment. The XenApp and XenDesktop diagram in the Exhibit gives details about the current Site and Zone design.

Click the Exhibit button to view the diagram.



Which statement is correct if all the Delivery Controllers in Satellite Zone 2 fail?

- A. Virtual Delivery Agent (VDA) machines in Zone 2 will register within Satellite Zone 1.
- B. Virtual Delivery Agent (VDA) machines in Zone 2 will register within the Primary Zone.
- C. Virtual Delivery Agent (VDA) machines in Satellite Zone 2 will NOT register
- D. Virtual Delivery Agent (VDA) machines will register using the Local Host Cache

**Answer: B (LEAVE A REPLY)**

### NEW QUESTION: 56

Scenario: A Citrix Architect has designed an active/passive XenApp and XenDesktop environment for a customer, where the passive datacenter serves as the disaster recovery (DR) datacenter for all users.

The following has been configured:

- NetScaler Gateways in both datacenters, each with a unique URL
- NetScaler load balancing of StoreFront and Delivery Controller XML services
- A separate XenApp and XenDesktop Site at each datacenter
- Two StoreFront servers deployed in each datacenter aggregating resources from the Delivery Controllers in the respective datacenter

During a disaster recovery strategy review, the IT infrastructure director recommends exploring cloud- based disaster recovery options for the XenApp and XenDesktop environment. The director reminds the team that the new solution would also have to support the following objectives:

- The DR environment needs to be fully functional in the event that the primary datacenter goes

completely offline.

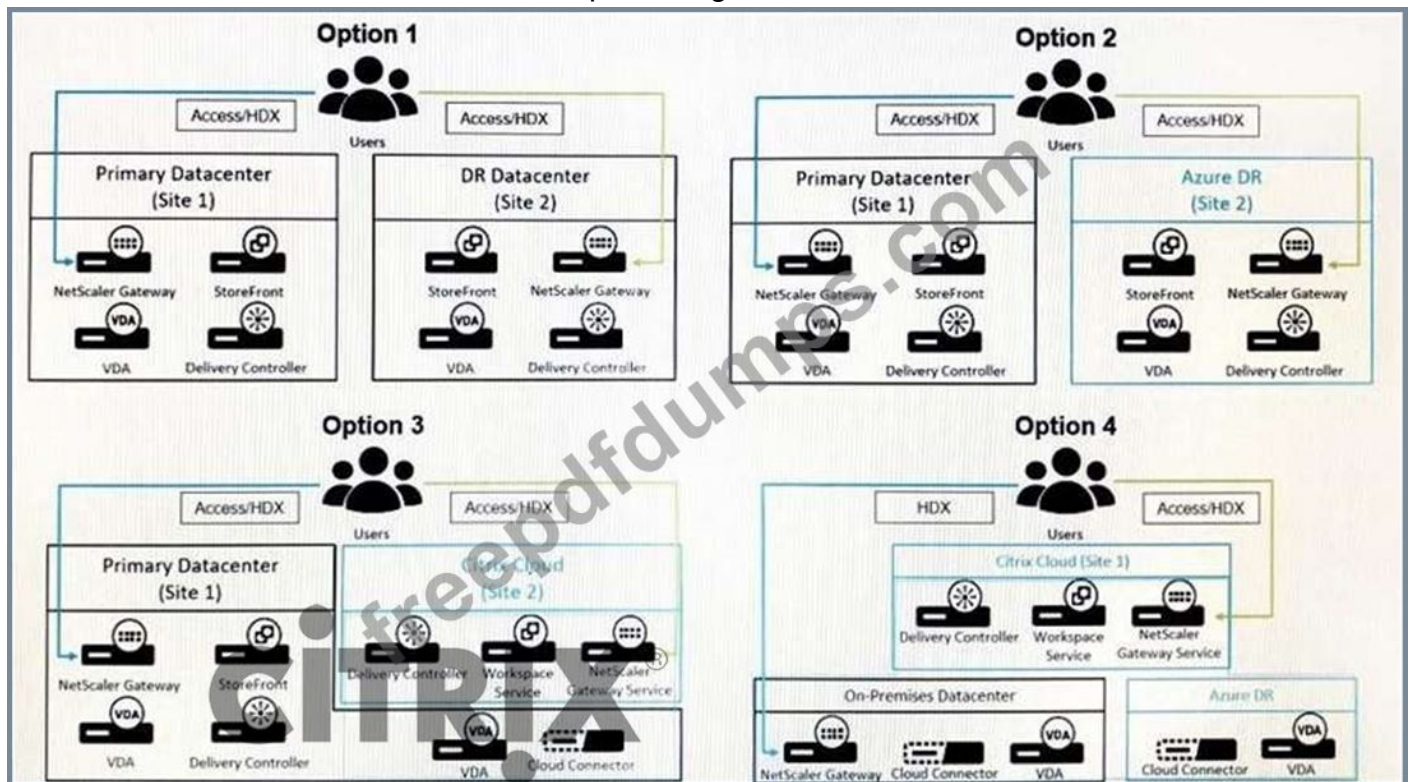
The DR environment should require minimal operating costs until it is needed to host active user sessions.

In a DR event, active user sessions should connect directly to the resource location without going through additional hops.

The architect develops four different conceptual diagrams to display the current architecture as well as

the potential cloud-based DR locations.

Click the Exhibit button to view the conceptual diagrams.



Based on the diagrams and above requirements, which Site architecture should the architect use?

- A. Option 4
- B. Option 2
- C. Option 3
- D. Option 1

**Answer: A (LEAVE A REPLY)**

Option 4 is correct = A

Option 1 = The DR environment should require minimal operating costs until it is needed to host active user sessions.

Option 2 = In a DR event, active user sessions should connect directly to the resource location without going through additional hops.

Option 3 = There is only one resource location

**NEW QUESTION: 57**

Scenario: A Citrix Architect is designing a XenDesktop environment. The Engineer group uses graphical applications which require the use of AMD hardware shared virtualized GPU. Which two hypervisors can the architect select? (Choose two.)

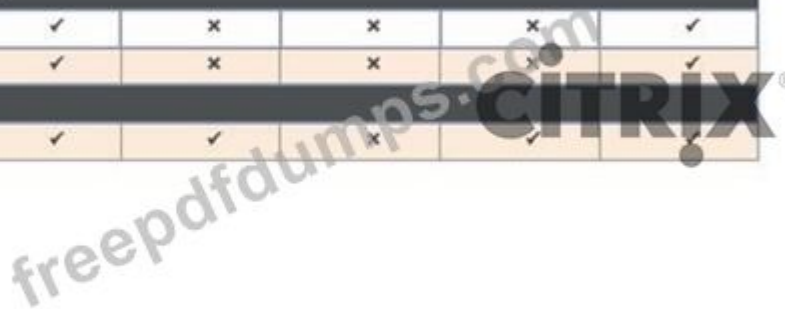
- A. XenServer 6.5
- B. VMware vSphere 5.5
- C. XenServer 7.0
- D. VMware vSphere 6.0
- E. Microsoft Hyper-V Server 2012 R2

**Answer: B,D (LEAVE A REPLY)**

<https://docs.citrix.com/en-us/xenapp-and-xendesktop/7-15-ltsr/downloads/handbook-715-ltsr.pdf>

	Pass-Through GPU	Hardware Virtualized GPU (Nvidia)	Hardware Virtualized GPU (Intel)	Hardware Virtualized GPU (AMD)	Software-Emulated GPU
<b>Citrix XenServer</b>					
XenDesktop	✓	✓	✓	✗	✓
XenApp	✓	✓	✓	✗	✓
<b>Microsoft Hyper-V</b>					
XenDesktop	✓	✗	✗	✗	✓
XenApp	✓	✗	✗	✗	✓
<b>VMware vSphere</b>					
XenDesktop	✓	✓	✓	✓	✓

Page 92



Citrix VDI Handbook - XenApp and XenDesktop 7.15 LTSR

XenApp	✓	✓	✗	✓	✓
--------	---	---	---	---	---

**NEW QUESTION: 58**

Scenario: A Citrix Architect needs to manage the disaster recovery process for a XenApp and XenDesktop environment. The environment currently consists of an active datacenter which is typically accessed by used and a disaster recovery (DR) datacenter which would be used in the event that a disaster impacts the primary datacenter. The overall environment has been designed to actively replicate user data and application data from the primary datacenter recovery datacenter using Microsoft DFS-R. Management has made it a priority to minimize the loss of data when failing over between datacenters.

Due to an earthquake, the primary datacenter suffers a major outage that affects multiple components. Management has decided to fail over the DR datacenter, and the architect has blocked access to the primary datacenter to prevent new attempts to connect to the XenApp and XenDesktop Site there.

Which three actions must the architect perform to meet the company priorities before enabling access to the DR datacenter? (Choose three.)

- A. Complete data replication from the primary datacenter to the DR datacenter.
- B. Monitor the automated failover process.
- C. Transport backup data repositories to the DR datacenter.
- D. Codifier data replication from the DR datacenter to the primary datacenter.
- E. Drain existing sessions from the primary datacenter.
- F. Evaluate the condition of the XenApp and XenDesktop environment in the primary datacenter.

**Answer: A,D,E (LEAVE A REPLY)**

Steps before allow access to DR Datacenter if Active Data Center becomes passive is:

1. Go/No-Go Decision
2. Block access to environment
3. Terminate existing connections
4. Finish replication
5. Reverse direction of replicaton

**NEW QUESTION: 59**

Scenario: A Citrix Architect is designing a new Citrix Virtual Apps and Desktops environment. The environment will utilize Citrix Provisioning (PVS) for image management of physical and virtual machines (VMs). Upon review of the current network infrastructure, the architect determined a number of considerations that will impact the overall imaging process.

Click the Exhibit button to view the existing internal network and PVS infrastructure details.

Network Architecture	Network Hardware/Servers	Target Devices
Single DNS Active Directory (AD) domain	Four Citrix Provisioning (PVS) servers	100 Target Devices (mix of physical and virtual machines)
One PVS Farm with 2 Sites, each containing 2 PVS servers  PVS Site 1 on Subnet A PVS Site 2 on Subnet B	Routers between Subnet A and Subnet B have all required ports configured for necessary services	Auto negotiation is enabled on the NIC of target devices
	No internal firewalls	
10 Gbps NICs, running full duplex mode on PVS servers and target devices	PVS vDisks are replicated between each PVS server	

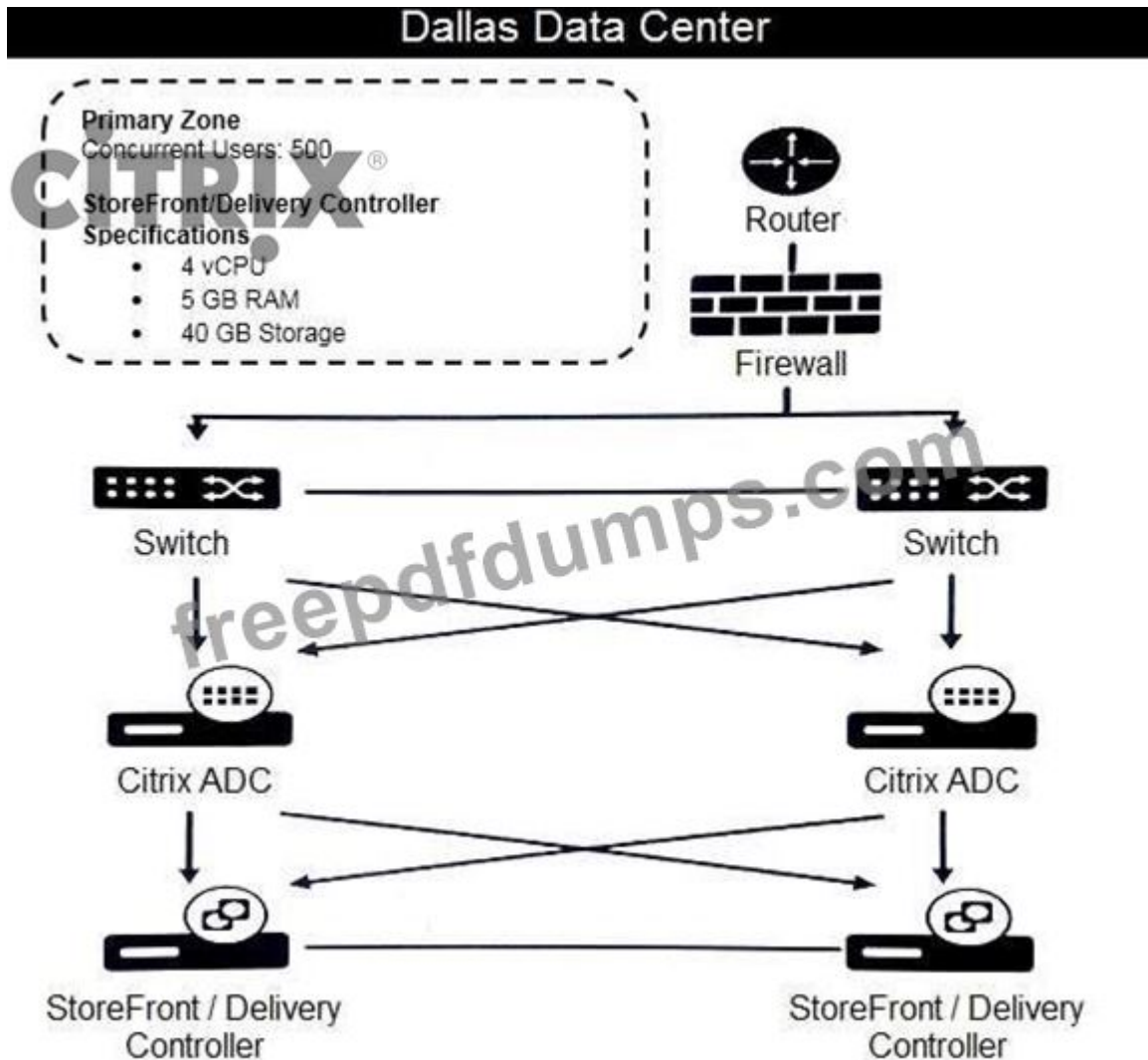
What should the architect do to optimize the Citrix Provisioning server to target device communication and the streaming process?

- A. Enable Subnet Affinity and set to Fixed
- B. Enable Replication and set to Best Effort
- C. Enable Subnet Affinity and set to None
- D. Enable Replication and set to Fixed

**Answer: A (LEAVE A REPLY)**

**NEW QUESTION: 60**

Scenario: A Citrix Architect is designing a single-Site Citrix Virtual Apps and Desktops production environment. Through earlier design discussions, the architect has determined the environment details listed in the exhibit Click the Exhibit button to view the details.



What should the architect change in the current environment to align with Citrix leading practices?

- A. The existing Delivery Controller and StoreFront servers should be allocated an additional 2 GB of RAM each.
- B. A Delivery Controller should be removed from the Site.
- C. A Delivery Controller should be added to the Site.
- D. The existing Delivery Controller and StoreFront servers should be allocated two additional CPUs each.
- E. The Delivery Controller and StoreFront roles should NOT be co-located on the same server.

Answer: A ([LEAVE A REPLY](#))

**NEW QUESTION: 61**

Scenario: A Citrix Architect has implemented a multi-location profile strategy as part of a large XenApp and XenDesktop solution. The architect needs to implement a single policy that sets the profile path for all users.

New York users - Server:NYC-FS.company.lan - Share: NYC-Profiles\$

Miami users - Server:MIA-FS.company.lan - Share: MIA-Profiles\$

San Francisco users - Server:SFO-FS.company.lan - Share: SFO-Profiles\$

The architect has proposed the usage of the following path for all users:

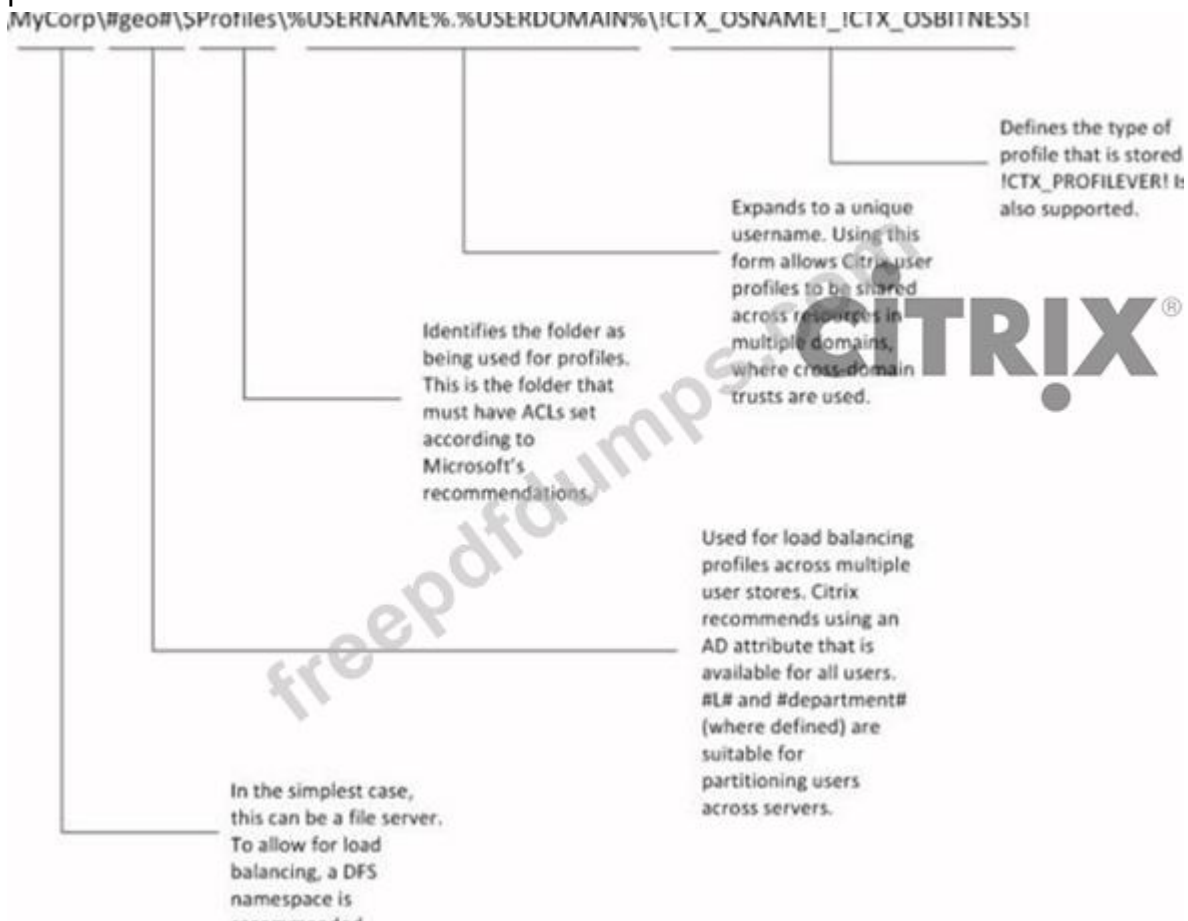
\\#Loc#-FS.company.lan\#Loc#-Profiles\$\#sAMAccountName#\%ProfileVer%\

What does the architect need to define in order to use the above path for all users as the profile location?

- A. A Loc variable using the Current-Location attribute
- B. A new attribute called Loc using Active Directory Explorer
- C. A user environment variable Loc using a login script
- D. A DFS-ROOT variable per datacenter and incorporate the user environment variable %homeshare%

**Answer: A (LEAVE A REPLY)**

<https://docs.citrix.com/en-us/profile-management/current-release/configure/specify-user-store-path.html>



\\#l#.userstore.myschools.net\profile\#sAMAccountName#\%ProfileVer%\

For Paris, this is expanded to:

\\Paris.userstore.myschools.net\profile\JohnSmith\v1\

Valid 1Y0-403 Dumps shared by Actual4test.com for Helping Passing 1Y0-403 Exam! Actual4test.com now offer the newest 1Y0-403 exam dumps, the Actual4test.com 1Y0-403 exam questions have been updated and answers have been corrected get the newest Actual4test.com 1Y0-403 dumps with Test Engine here:

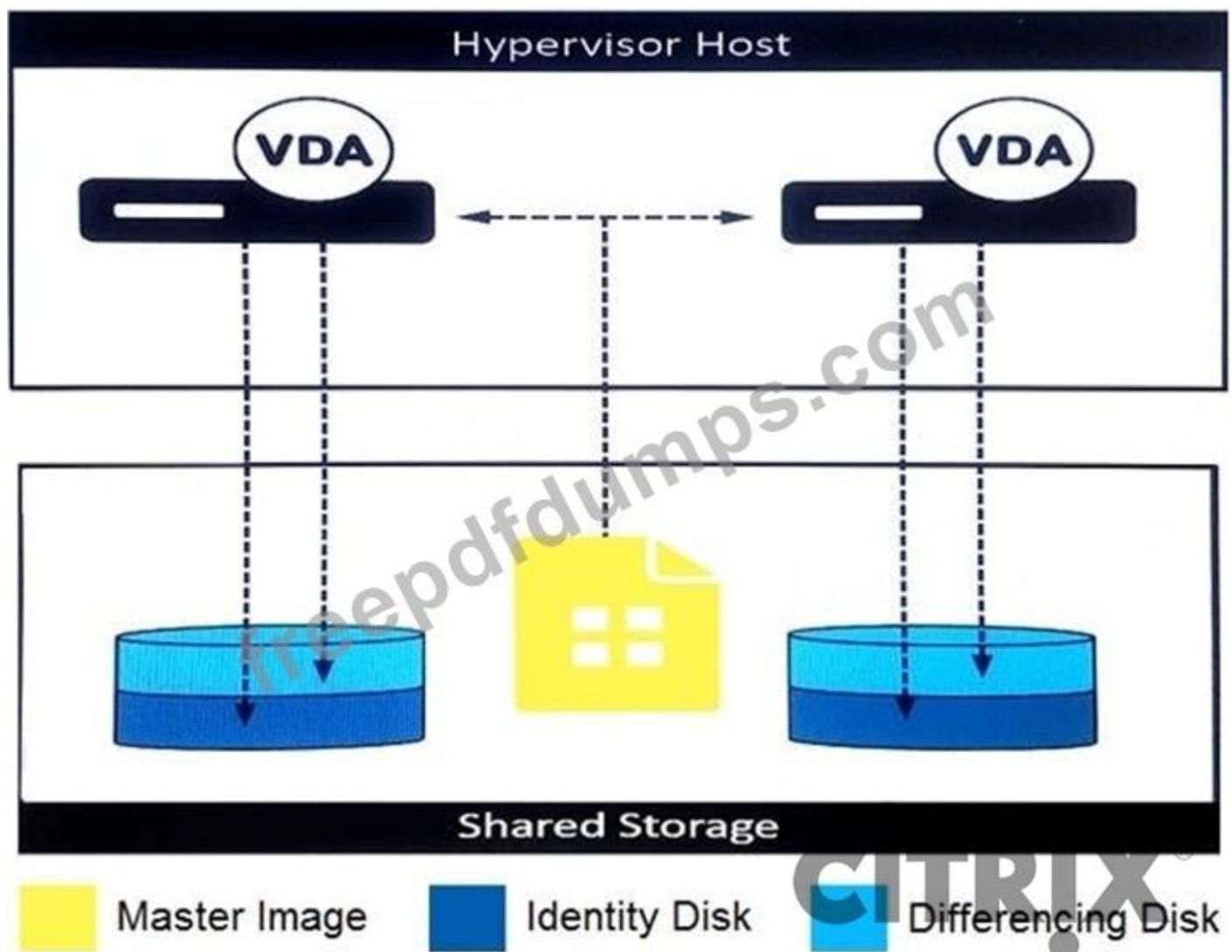
[https://www.actual4test.com/1Y0-403\\_examcollection.html](https://www.actual4test.com/1Y0-403_examcollection.html) (244 Q&As Dumps, 30%OFF

Special Discount: **Freepdfdumps**)

### NEW QUESTION: 62

Scenario: A Citrix Architect is redesigning a Citrix Virtual Apps and Desktops environment to include Machine Creation Services (MCS). During design discussions, the locations for the MCS-provisioned thin clone machine disks are proposed as shown in the exhibit.

Click the Exhibit button to view the details.



Which two potential issues should the architect address with the customer before proceeding with this configuration? (Choose two.)

**A.** It will require substantial write IOPS to the shared storage location as temporary data is written.

- B. It will require more storage to be allocated on the virtual machine (VM) hosts compared with other options.
- C. It is limited to NFS shared storage.
- D. It will require substantial read IOPS from the shared storage location during machine creation and updates.
- E. It is limited to certain hypervisors.

**Answer: B,D (LEAVE A REPLY)**

**NEW QUESTION: 63**

Scenario: A Citrix Architect needs to design a new XenApp and XenDesktop environment. The architect has identified the Resource Layer requirements shown in the Exhibit. Click the Exhibit button to view the requirements.

User Group	Do user settings need to persist?	Assigned FlexCast model	Access required to profile folders?	Additional Requirements
Accountants	Yes	Published apps	Yes, the following folders should be available: <ul style="list-style-type: none"> <li>• Contacts</li> <li>• Desktop</li> <li>• Favorites</li> <li>• My Documents</li> </ul>	Needs synchronization of a specific application log file within the AppData folder
Executives	Yes	Remote PC Access	Yes, the following folders should be available: <ul style="list-style-type: none"> <li>• Contacts</li> <li>• Desktop</li> <li>• Downloads</li> <li>• Favorites</li> <li>• My Documents</li> </ul>	Needs ability to use resource locally while offline
Graphic Designers	Yes	Hosted VDI (Static / persistent, uses vGPU)	No	No
Customer Service	No	Published Desktop (Server OS)	No	No

Which Citrix Profile Management feature can help the architect address the Accountants group requirements?

- A. Profile streaming
- B. File exclusions
- C. File inclusions
- D. Profile caching

**Answer: (SHOW ANSWER)**

Folder and File Exclusion/Inclusion

In Citrix Profile Management, there is a GPO that can be specifically configured to block folders and files from profile synchronization.

AppData\LocalLow: the files under this folder are almost low importance, and this folder is excluded by default in Citrix Profile Management INI file.

AppData\Local: many apps writes their application data to AppData\Local, such as temporary data, cache files and other junk that does not and should not persist, causing this folder bloat. Also some files under AppData\Local, such as DAT file or INI files which contain all the user important personalization settings. If you exclude the whole folder AppData\Local to reduce the profile size and synchronization speed, you may also lose some app settings when you roam between different clients. At this time, you should take a close look and figure out what exactly the application is writing and whether or not it really needs to persist, then include the necessary ones, exclude the unnecessary ones.

AppData\Roaming: the files under this folder are generally treated to be copied back to user store. It is recommended to allow this folder to retain the application settings, and there are several folders under AppData\Roaming that are excluded by default in INI file. You can add those folders to be excluded from sync which you do not wish to include.

Except the AppData folder, other folders and files under the profile can also be excluded/included according to your requirement. With a help of a suitable configuration the app can be made to persist without synchronising or roaming the entire directory. This would ensure the profile is small. And there are some default exclusions defined in Citrix Profile Management INI file.

<https://support.citrix.com/article/CTX224498>

**NEW QUESTION: 64**

Scenario: A Citrix Architect is designing a new Citrix Virtual Apps and Desktops environment. The table in the exhibit lists details about the requirements of the current user groups and their Virtual Delivery Agent (VDA) machine workloads.

Click the Exhibit button to view the table.

User	Scaling Priority	VDA Type	Workload Weight	CPU Overcommit	Virtual CPUs per VM	VMs per Host	Users per VM
User Group 1	Scalability	Desktop	Medium	8:1	2	40	1
User Group 2	User Experience	Server	Medium	1.5:1	6	16	20
User Group 3	Scalability	Desktop	Heavy	6:1	4	36	1
User Group 4	Scalability	Server	Medium	1.5:1	6	27	20

The architect should scale the hardware used to host the virtual machines (VMs) for User Group 1 to

\_\_\_\_\_ cores. (Choose the correct option to complete the sentence.)

- A. 96
- B. 32
- C. 16
- D. 24
- E. 64

**Answer: D (LEAVE A REPLY)**

**NEW QUESTION: 65**

Scenario: A Citrix Architect designed an active-passive Citrix Virtual Apps and Desktops environment, where the passive data center serves as the disaster recovery (DR) data center for all users.

Twelve items have been configured:

- Citrix ADC Global Server Load Balancing (GSLB) to provide single URL direction to the active data center.
- GSLB has health monitors configured for the load balanced servers.
- Citrix Gateways are on both data centers.
- Citrix ADC load balancing occurs for StoreFront and Delivery Controller XML services.
- A single Citrix Virtual Apps and Desktops Site exists.
- Four Delivery Controllers are members of the Site.
- Two Delivery Controllers are members of the Primary Zone in the active data center.
- Two Delivery Controllers are members of the Satellite Zone in the passive data center.
- SQL is deployed in the active data center.
- Local Host Cache is enabled.
- Two StoreFront servers are deployed in each data center aggregating resources from the Delivery Controllers in the respective data center.
- Virtual Delivery Agent (VDA) machines are deployed in both data centers and configured to register with Delivery Controllers in their zone.

What would happen if the Delivery Controllers in the primary data center were turned off?

- A.** GSLB will start redirecting connections to the secondary data center.
- B.** StoreFront in the primary data center would still be able to launch sessions.
- C.** GSLB will NOT identify that the Delivery Controllers are down and sessions CANNOT launch.
- D.** VDA machines from the primary data center would register with the Delivery Controllers in the passive data center.

**Answer:** ([SHOW ANSWER](#))

#### **NEW QUESTION: 66**

Scenario: A Citrix Consultant is designing a new Citrix Virtual Desktops environment. During the user segmentation process, a Citrix Architect collected a small amount of data about user requirements, but was NOT able to create well-defined user groups.

Which user-segmentation actions should the consultant pursue?

- A.** Analyze existing data, confirm user groups, and identify user requirements
- B.** Analyze existing data, define user groups, and confirm user requirements.
- C.** Collect user data, define user groups, and identify user requirements.
- D.** Collect user data, confirm user groups, and identify user requirements.

**Answer:** **C** ([LEAVE A REPLY](#))

#### **NEW QUESTION: 67**

Scenario: A Citrix Architect is designing a new Citrix Virtual Apps and Desktops environment. Based on some initial discussions about the business goals and objectives of the company, the architect collected the information shown in the exhibit.

Click the Exhibit button to view the information.

Category	Detail
Application Name	HealthApp
Description	The application is an electronic medical recording (EMR) solution for large hospitals and healthcare systems. HealthApp has its own authentication engine to control access to sensitive data.
Usage	The application will be used by all employees in the organization.
OS Compatibility	The application is compatible with the Virtual Desktop Access (VDA) operating systems.
Special Considerations	All users will access HealthApp from non-domain, joined kiosk devices. Session reconnection and session roaming capabilities are NOT required.

What should the architect recommend to meet customer requirements?

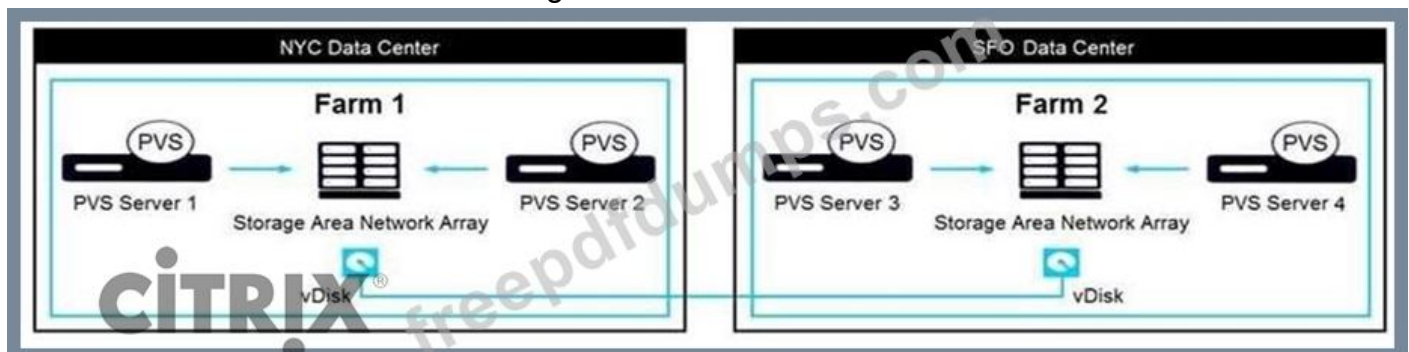
- A. Have users connect to an authenticated store through Citrix Workspace app for Web sites.
- B. Have users connect to an unauthenticated store through the Citrix Workspace app for Web sites.
- C. Have users connect to an authenticated store through the Citrix Virtual Apps Services URL.
- D. Have users connect using a Desktop Appliance site created in the StoreFront console.

**Answer: C** ([LEAVE A REPLY](#))

### NEW QUESTION: 68

Scenario: A Citrix Architect is designing a multi-data center Citrix Virtual Apps and Desktops environment that will use Citrix Provisioning (PVS) to manage Virtual Delivery Agent (VDA) machine images. Each data center will have a separate PVS farm. During design discussions, the architect created a diagram to depict the way in which vDisk files will be replicated among PVS farms, based on the available storage for the vDisk stores.

Click the Exhibit button to view the diagram.



Overall, the customer has identified 3 objectives for the image-replication process:

- \* Administrative time required to replicate images among farms must be minimized.
- \* The process must be usable by storage administrators without PVS farm administrative permissions.
- \* Pre-existing infrastructure and processes should be used where possible.

Which method should the architect use to replicate vDisk files among data centers?

- A. vDisk Replicator Utility
- B. SAN replication
- C. Microsoft Distributed File System Replication (DFSR) Namespaces
- D. Scheduled RoboCopy commands
- E. Manual copy

**Answer: B (LEAVE A REPLY)**

**NEW QUESTION: 69**

Scenario: A Citrix Architect is designing an environment for a large company. The company has identified the following user groups and requirements.

Product Managers - Typically, they work from inside the company network but are able to work from home. They need to use a variety of standard productivity

and web-based SaaS applications.

Field Sales Engineers - They frequently work with mobile devices and tend to access the environment externally. They need access to sales tools and the front-end of the customer database.

Web Developers - Internal and remote workers who use specialized hardware with a graphics card to handle resource-intensive applications.

Which FlexCast model should the architect assign to Field Sales Engineers?

- A. Published Apps
- B. Hosted Applications
- C. Hosted VDI
- D. Published Desktops

**Answer: C (LEAVE A REPLY)**

<https://blog.citrix24.com/xendesktop-7-flexcast-models/>

FlexCast Model	User Installed Apps	Image Delivery Technology	Virtual / Physical	Access	Desktop to User Ratio
Hosted shared: Non-persistent	No	MCS / PVS	Physical / Virtual	HDX	1 : Many
Hosted VDI:	Random / Non-Persistent	MCS / PVS	Virtual	HDX	1 : Many
	Static / Non-Persistent	MCS / PVS	Virtual	HDX	1 : 1
	Static / Persistent	MCS / PVS	Virtual	HDX	1 : 1
Remote PC	Yes	Installed	Physical	HDX	1 : 1
Streamed VHD	No	PVS	Physical	Local	1 : 1
Local VM	Yes	XC	Virtual (XenClient)	Local	1 : 1
On demand apps	No	MCS / PVS	Physical / Virtual	HDX	1 : Many

### NEW QUESTION: 70

Scenario: A Citrix Architect is designing a new Citrix Virtual Apps and Desktops environment. Based on some initial discussions about the business goals and objectives of the company, the architect collected the information shown in the exhibit.

Click the Exhibit button to view the information.

Category	Detail
Application Name	HealthApp
Description	The application is an electronic medical recording (EMR) solution for large hospitals and healthcare systems. HealthApp has its own authentication engine to control access to sensitive data.
Usage	The application will be used by all employees in the organization.
OS Compatibility	The application is compatible with the Virtual Desktop Access (VDA) operating systems.
Special Considerations	All users will access HealthApp from non-domain, joined kiosk devices.  Session reconnection and session roaming capabilities are NOT required.

What should the architect recommend to meet customer requirements?

- A. Have users connect to an authenticated store through the Citrix Virtual Apps Services URL.
- B. Have users connect using a Desktop Appliance site created in the StoreFront console.
- C. Have users connect to an authenticated store through Citrix Workspace app for Web sites.
- D. Have users connect to an unauthenticated store through the Citrix Workspace app for Web sites.

**Answer: A (LEAVE A REPLY)**

### NEW QUESTION: 71

Scenario: A Citrix Architect needs to design a new XenApp and XenDesktop environment for a financial services company. During the project kickoff meeting, the organization states the following business priorities:

"Overall, we want a robust solution which ensures that users can access their resources at any time, even if our primary datacenter experiences an outage. Our employees will need to access their resources from both inside and outside our corporate network, but we need to ensure that we enable this in a secure manner and protect our sensitive data." Which four design decisions align with the organization's stated business drivers? (Choose four.)

- A. Redundancy should be implemented for all infrastructure components.
- B. Server OS Virtual Delivery Agent (VDA) machines should be used to increase user density per machine.
- C. Optimal Gateway Routing should be configured on StoreFront.
- D. NetScaler will be required in the environment.
- E. A multi-Site architecture and disaster recovery plan will be required.
- F. Single image management should be included in the design.
- G. SmartAccess or SmartControl features should be considered for this environment.

**Answer: A,D,E,G (LEAVE A REPLY)**

Somebody has an explanation why not taking A instead of B. They want access their resources at any time, even if the primary datacenter experiences an outage. I think Redundancy is a must and they dont ask for a cheaper solution.

### **NEW QUESTION: 72**

Scenario: A Citrix Architect is designing a new Citrix Virtual Apps and Desktops environment. Management has advised that they have a limited budget for the new solution. However, they still expect the design to account for future growth without the need to redesign or repurchase central hardware components. Additionally, the current 1 Gb network infrastructure CANNOT be replaced within the scope of this project. The architect has determined that the company can support both current and future load with 2 to 3 separate Virtual Delivery Agent (VDA) machine images. Which two features should the architect consider while designing the Citrix Hypervisors for the proposed Citrix environment? (Choose two.)

- A. Intellicache
- B. iSCSI storage
- C. Boot from SAN
- D. Thin provisioning
- E. PXE boot with PVS
- F. vApps

**Answer:** ([SHOW ANSWER](#))

### **NEW QUESTION: 73**

Scenario: A Citrix Architect has implemented a multi-location profile strategy as part of a large Citrix Virtual Apps and Desktops solution. The architect needs to implement a single policy that sets the profile path for all users.

New York users: Server: NYC-FS.company.lan - Share: NYC-Profiles\$

Miami users: Server: MIA-FS.company.lan - Share: MIA-Profiles\$

San Francisco users: Server: SFO-FS.company.lan - Share: SFO-Profiles\$

The architect has proposed the usage of this path for all users:

Error! Hyperlink reference not valid.

What does the architect need to define to use the above path for all users as the profile location?

- A. A Loc variable using the Current-Location attribute
- B. A DFS-ROOT variable per data center that incorporates the user environment variable %homeshare%
- C. A new attribute called Loc using Active Directory (AD) Explorer
- D. A user environment variable Loc using a login script

**Answer:** C ([LEAVE A REPLY](#))

### **NEW QUESTION: 74**

Scenario: A Citrix Architect is implementing a new Citrix Virtual Apps and Desktops environment. The IT team has purchased 1,000 Citrix Virtual Apps and Desktops Advanced licenses.

The company requires the IT team to produce a report of successful and failed connections of Citrix Virtual Apps sessions during the last 30 days.

Which two actions does the architect need to take to produce the report? (Choose two.)

- A. Configure 'GroomSessionsRetentionDays'
- B. Purchase Citrix Gateway Universal licenses
- C. Implement Citrix Application Delivery Management
- D. Purchase Citrix Virtual Desktops Premium licenses
- E. Configure 'GroomFailuresRetentionDays'

**Answer: D,E (LEAVE A REPLY)**

### NEW QUESTION: 75

Scenario: A Citrix Architect is designing a new Citrix Virtual Apps and Desktops environment. The architect has identified the Resource Layer requirements shown in the exhibit.

Click the Exhibit button to view the requirements.

Category	Detail
Application Name	Enterprise Vault <sup>®</sup>
Application Description	The application is used to archive from various sources such as Microsoft Exchange (2003, 2007, 2010, 2013, and 2016), SMTP, IBM Domino, Microsoft SharePoint, and various file systems.  It has the ability to store on multiple storage platforms, such as NTFS, NetApp, Centera, SMB, and WORM.  Data archived is indexed, classified, deduplicated, and securely stored.
Usage	The application will be used by most employees in the organization.
OS Compatibility	The application is compatible with the target operating systems.
Special Considerations	Users need to launch the published Outlook application and click on the Enterprise Vault tab to open the application files.
Issue Description	When testing the application using local and roaming profiles, there are no issues; however, Citrix Profile Management users lose their data after logging off.

Which Citrix Profile Management configuration could help the architect address the issue referenced in the exhibit?

- A. Enable Active write back
- B. Add the application folder to the Exclusion policy
- C. Add the application folder to the Inclusion policy
- D. Enable Cross-platform

**Answer: A (LEAVE A REPLY)**

### NEW QUESTION: 76

Scenario: A Citrix Architect is designing a new Citrix Virtual Apps and Desktops environment. The customer previously installed all applications locally on managed laptops and desktops, but is willing to evaluate other application delivery methods as part of the new deployment. The environment will be standardized on Windows 10 for the Virtual Delivery Agent (VDA) machines.

As part of an application analysis performed earlier in the project, the information in the exhibit was collected regarding 1 of the required applications.

Click the Exhibit button to view the information.

Category	Detail
Application Name	Visual Studio
Description	The application is used to develop computer programs, websites, web apps, web services, and mobile apps.
Usage	The application will be used by developers working in the organization.
OS Compatibility	The application is compatible with the target operating systems.
Special Considerations	The users are internal and external contractors, third-party collaborators, and other provisional team members who do NOT require offline access to the application.  The application contains a number of Windows services.

The customer's security policies mandate that all development software must run within the corporate data center, but should appear to the user as if it is running locally on the virtual machine (VM).

How should the architect recommend deploying the application?

- A. Push it to users with a Workspace Environment Management (WEM) action option.
- B. Install it in an Application Layer using Citrix App Layering, then present it to users as an Elastic Layer during a virtual a virtual desktop session.
- C. Stream it to a VDA machine using Microsoft App-V, and access it through a virtual desktop session.
- D. Use Desktop OS machines to deliver VM hosted applications.
- E. Install it directly on the endpoint devices, and include it in a virtual desktop session using the Local App Access feature.

**Answer: C ([LEAVE A REPLY](#))**

**Valid 1Y0-403 Dumps** shared by Actual4test.com for Helping Passing 1Y0-403 Exam! Actual4test.com now offer the **newest 1Y0-403 exam dumps**, the Actual4test.com 1Y0-403 exam **questions have been updated** and **answers have been corrected** get the **newest** Actual4test.com 1Y0-403 dumps with Test Engine here:

[https://www.actual4test.com/1Y0-403\\_examcollection.html](https://www.actual4test.com/1Y0-403_examcollection.html) (244 Q&As Dumps, **30%OFF**)

**Special Discount: [Freepdfdumps](#)**)

#### **NEW QUESTION: 77**

Scenario: A Citrix Architect is designing a new Citrix Virtual Apps and Desktops environment. The customer previously installed all applications locally on managed laptops and desktops, but is willing to evaluate other application delivery methods as part of the new deployment. The environment will be standardized on Windows 10 for the Virtual Delivery Agent (VDA) machines. As part of an application analysis performed earlier in the project, the information in the exhibit was collected regarding 1 of the required applications.

Click the Exhibit button to view the information.

Category	Detail
Application Name	Visual Studio
Description	The application is used to develop computer programs, websites, web apps, web services, and mobile apps.
Usage	The application will be used by developers working in the organization.
OS Compatibility	The application is compatible with the target operating systems.
Special Considerations	The users are internal and external contractors, third-party collaborators, and other provisional team members who do NOT require offline access to the application. The application contains a number of Windows services.

The customer's security policies mandate that all development software must run within the corporate data center, but should appear to the user as if it is running locally on the virtual machine (VM).

How should the architect recommend deploying the application?

- A. Install it directly on the endpoint devices, and include it in a virtual desktop session using the Local App Access feature.
- B. Install it in an Application Layer using Citrix App Layering, then present it to users as an Elastic Layer during a virtual a virtual desktop session.
- C. Use Desktop OS machines to deliver VM hosted applications.
- D. Push it to users with a Workspace Environment Management (WEM) action option.
- E. Stream it to a VDA machine using Microsoft App-V, and access it through a virtual desktop session.

**Answer: (SHOW ANSWER)**

#### NEW QUESTION: 78

Scenario: The IT team of a company needs to mitigate the Hardware Layer to Microsoft Azure. The Virtual Delivery Agent (VDA) machines are manually provisioned within Microsoft Azure. The IT team asks a Citrix Architect for a solution for high availability of existing VDA machines in a single Azure data center. The objective is to be proactive about any hardware failure at Microsoft Azure, so that all virtual machines (VMs) will NOT be affected.

What should the architect recommend the IT team create in Microsoft Azure?

- A. Resource group
- B. Availability sets with fault domain
- C. Availability sets with update domain
- D. Availability zones

**Answer: D (LEAVE A REPLY)**

<https://docs.microsoft.com/en-us/azure/virtual-machines/manage-availability>

#### NEW QUESTION: 79

Scenario: A Citrix Architect is designing a new Citrix Virtual Apps and Desktops environment. The architect has identified the Resource Layer requirements shown in the exhibit.

Click the Exhibit button to view the requirements.

User Group	Persistent User Settings Required?	Assigned FlexCast Model	Access to Profile Folders Required?	Additional Requirements
Accountants	Yes	Published Apps	No	None
Executives	Yes	Remote PC	Yes, the following folders should be available: <ul style="list-style-type: none"> <li>• Contacts</li> <li>• Desktop</li> <li>• Downloads</li> <li>• Favorites</li> <li>• My Documents</li> </ul>	Profile data should be preserved even if the resource machine fails.  Solution must NOT require anything to be installed on remote PCs.
Graphic Designers	Yes	Hosted VDI – Random/ Non-persistent Desktops; Uses vGPU	Yes, the following folders should be available: <ul style="list-style-type: none"> <li>• Contacts</li> <li>• Desktop</li> <li>• Favorites</li> <li>• My Documents</li> <li>• My Pictures</li> <li>• My Videos</li> </ul>	Synchronize profile files in multiple sessions.
Customer Service	No	Published Desktop (Server OS)	No	None

Which feature of Citrix Profile Management could help the architect address the Graphic Designers Group requirements?

- A. Active write back
- B. NTUser.dat backup
- C. Profile streaming
- D. Profile caching

**Answer: (SHOW ANSWER)**

Reference:

<https://support.citrix.com/article/CTX224498>

**NEW QUESTION: 80**

Scenario: A Citrix Architect is assessing a Provisioning Services farm. The farm has access to one Store; the vDisks in the Store are shown in the Exhibit.

Click the Exhibit button to view the vDisks.

Name	Site	Connections	Size	Mode	Class	Description
Windows-Server-2008R2	NYC	0	61,440 MB	Cache on Server		
Windows-Server-2012R2	NYC	0	61,440 MB	Cache on Server		
Windows-Server-2016	NYC	0	61,440 MB	Cache on Server		

How much RAM should the architect allocate to each of the Provisioning Services servers to optimally cache existing vDisk data while NOT over-provisioning resources?

- A. 14 GB
- B. 17 GB
- C. 12 GB
- D. 9 GB

Answer: ([SHOW ANSWER](#))

**RAM**

The Windows operating system hosting Provisioning Services partially caches the vDisks in memory (system cache) reducing the number of reads required from storage. Reading from storage is significantly slower than reading from memory. Therefore, Provisioning Servers should be allocated sufficient memory to maximize the benefit from this caching process.

The following formula can be used to determine the optimal amount of memory that should be allocated to a provisioning server:

$$\text{Total Server RAM} = 2\text{GB} + (\# \text{ of vDisks} * 2\text{GB})$$

## Decision: Server Sizing

Generally, a Provisioning Server is defined with the following specifications:

Component	Specification
Model	Virtual
Processor	4 to 8 vCPU
Memory	2GB + (# of vDisks * 2GB)
Network	10 Gbps NIC
Host Storage	40 GB shared storage
vDisk Storage	Depending on number of images/revisions
Operating System	Windows Server 2012R2®

Table 45: General Provisioning Services specifications

<https://docs.citrix.com/en-us/xenapp-and-xendesktop/7-15-ltsr/downloads/handbook-715-ltsr.pdf>

<https://www.citrix.com/blogs/2013/07/03/pvs-internals-2-how-to-properly-size-your-memory/>

### NEW QUESTION: 81

Scenario: A Citrix Architect needs to design a new XenApp and XenDesktop environment. Citrix Provisioning Services has been selected for image management.

Which two RAID levels should the architect use for the storage hosting the Provisioning Service write cache? (Choose two.)

- A. RAID 0
- B. RAID 1
- C. RAID 10
- D. RAID 6
- E. RAID 5

**Answer: (SHOW ANSWER)**

<https://docs.citrix.com/en-us/xenapp-and-xendesktop/7-15-ltsr/citrix-vdi-best-practices/design/design-userlayer5.html> To choose the optimal RAID level, it is necessary to consider the IOPS and read/write ratio generated by a given application or workload in combination with the individual capabilities of a RAID level. For hosting read intensive workloads, such as the Provisioning Services vDisk store, RAID levels that are optimized for read operations such as RAID 1, 5, 6, 10 are optimal. This is because these RAID levels allow read operations to be spread across all disks within the RAID set simultaneously.

For hosting write intensive workloads, such as Provisioning Services write cache and Machine Creation Services differencing disks, RAID levels such as RAID 1 or 10 are optimal, as these are optimized for writes and have a low write penalty.

## NEW QUESTION: 82

Scenario: A Citrix Architect needs to design a new XenApp and XenDesktop environment. The customer previously installed all applications locally on managed laptops and desktops but is willing to evaluate other application delivery methods as part of the new deployment.

The environment will be standardized on Windows 10 and Windows Server 2016 for the Virtual Delivery Agent (VDA) machines. As part of an application analysis performed earlier in the project, the information in the Exhibit was collected regarding one of the required applications. Click the Exhibit button to view the information.

Category	Detail
Application Name	Workspace Office 2010
Description	A suite of productivity applications (word processing, spreadsheets, presentations, email, etc.).
Usage	This application suite is required by the accounting department.
OS Compatibility	The application is compatible with the target operating systems.
Special Considerations	<p>The rest of the organization will be using Workspace Office 2016, but the accounting team uses specialized add-ins that are only compatible with the older version of the spreadsheet application in the suite. However, the accounting team would also like to use the newer email and word processing apps if possible.</p> <p>Only one version of the Workspace Office software can be installed on a machine's system at any time.</p>

Additionally, the customer has the following objectives:

- Minimize the number of images that must be managed.
- Utilize zero clients as endpoints in order to reduce costs.

Which application delivery method should the architect use for the application?

- A.** The application should be streamed to a VDA machine using Microsoft App-V and accessed through a virtual desktop session.
- B.** The application should be installed on an Application Layer using Citrix App Layering, be included in a layered image, and accessed through a virtual desktop session.
- C.** The application should be installed on an Application Layer using Citrix App Layering then be presented to assigned users as an Elastic Layer during a virtual desktop session.
- D.** The application should be installed directly on a Server OS VDA machine and accessed from the endpoint as a published application.
- E.** The application should be installed directly on endpoint devices and included in a virtual desktop session using the Local App Access feature.

**Answer: A (LEAVE A REPLY)**

App Layering is not an application isolation solution and therefore will not solve inter-application compatibility issues or OS compatibility issues. Application streaming products such as App-V may be able to assist in some of these cases

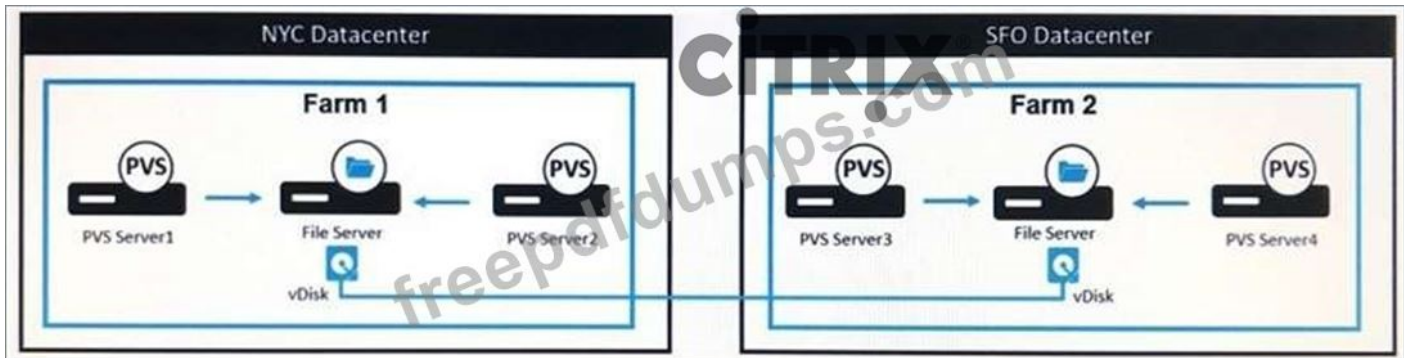
<https://www.citrix.com/blogs/2017/08/07/enterprise-architect-techtalk-citrix-app-layering-faq/>

## NEW QUESTION: 83

Scenario: A Citrix Architect needs to design a multi-datacenter XenApp and XenDesktop environment that will use Provisioning Services (PVS) to manage Virtual Delivery Agent (VDA)

machine images. Each datacenter will have a separate Provisioning Services farm. During the design discussions, the architect creates a diagram to depict the way vDisk files will be replicated between PVS farms, based on the available storage for the vDisk Stores.

Click the Exhibit button to view the diagram.



Overall, the customer has identified the following objectives for the image replication process:

- Minimize the administrative time required to replicate images between farms
- Must be usable by storage administrators without PVS farm administrative permissions
- Can handle network interruptions without administrator intervention

Which method should the architect use to replicate the vDisk files between datacenters?

- A. SAN replication
- B. Scheduled robocopy commands
- C. Manual copy
- D. Microsoft DFS-R
- E. vDisk Replicator Tool

**Answer: E (LEAVE A REPLY)**

#### NEW QUESTION: 84

Scenario: A Citrix Architect is designing a new Citrix Virtual Apps and Desktops environment for a company that will utilize Citrix Provisioning as a solution to deploy Virtual Delivery Agent (VDA) machines. After reviewing the existing infrastructure, the architect determined that VDA machines are all on the same network subnet, and are a mixture of Unified Extensible Firmware Interface (UEFI)-based technology and legacy BIOS-based virtual machines (VMs). Management has specified that the proposed solution should be configurable from a central location without the need to create new catalogs or device collections.

Which three target device boot methods can the architect recommend for this deployment?

(Choose three.)

- A. BDM disk partition
- B. BDM ISO
- C. BIOS-embedded
- D. PXE
- E. DHCP options

**Answer: B,D,E (LEAVE A REPLY)**

**NEW QUESTION: 85**

Scenario: A Citrix Architect is designing a new Citrix Virtual Apps and Desktops environment. Management has advised that they have a limited budget for the new solution. However, they still expect the design to account for future growth without the need to redesign or repurchase central hardware components.

Additionally, the current 1 Gb network infrastructure CANNOT be replaced within the scope of this project. The architect has determined that the company can support both current and future load with 2 to 3 separate Virtual Delivery Agent (VDA) machine images.

Which two features should the architect consider while designing the Citrix Hypervisors for the proposed Citrix environment? (Choose two.)

- A. Thin provisioning
- B. PXE boot with PVS
- C. Boot from SAN
- D. vApps
- E. iSCSI storage
- F. Intellicache

**Answer: A,C (LEAVE A REPLY)**

Explanation/Reference:

**NEW QUESTION: 86**

Scenario: A Citrix Architect needs to implement Citrix Virtual Apps and Desktops. Based on the assessment and early stages of the design, the requirements in the exhibit have been identified. Click the Exhibit button to view the requirements.

Requirement	Detail
Number of Users	5,000
Environment	Production
Redundancy	Highly available
Administrative Team	Highly skilled IT teams
Level of Performance	High
Image Management	Citrix Provisioning (PVS)/non-persistent Machine Creation Services (MCS)/persistent
Additional Considerations	Dedicated network infrastructure required

Which tier of storage should the architect consider implementing, based on the requirement?

- A. DAS
- B. SAN
- C. NAS
- D. Local

**Answer: (SHOW ANSWER)**

**NEW QUESTION: 87**

Scenario: A large retail environment includes a StoreFront server group with 2 servers, each with 2 vCPUs and 4 GB of RAM. The server group handles about 25,000 user connections per hour, with the majority of users accessing the environment using the Citrix Workspace app. Workspace Control has been disabled for the environment.

A Citrix Architect learns that the company will soon merge with another retail chain. The Citrix Virtual Apps and Desktops environment must double its capacity, and the StoreFront server group is expected to handle about 40,000 user connections per hour.

What should the architect do to meet the expected load while maintaining high availability with optimal resource allocation for the StoreFront component?

- A. Allocate an additional 2 vCPUs to each existing StoreFront server.
- B. Enable Workspace Control for all StoreFront stores.
- C. Allocate an additional 2 GB of RAM to each existing StoreFront server.
- D. Train users to begin accessing the environment using Citrix Workspace app for Web site.
- E. Use the least connection method for load-balancing on Citrix ADC.

**Answer: A (LEAVE A REPLY)**

<https://docs.citrix.com/en-us/tech-zone/design/reference-architectures/virtual-apps-and-desktops-service.html>

**NEW QUESTION: 88**

Scenario: A Citrix Architect needs to design a new XenApp and XenDesktop environment for a bank. After the project kickoff meeting, the following business drivers have been identified and prioritized in the following order:

1. Increase security
2. Reduce costs
3. Improve the user experience
4. Simplify management

Later in the design process, the architect documents the design decisions shown in the Exhibit (only some are shown).

Click the Exhibit button to view the design decisions.

Design Topic	Design Decision
Authentication Methods	<ul style="list-style-type: none"> <li>• Internal users on managed devices: Smart card authentication</li> <li>• External users on BYOD devices: LDAP and RADIUS</li> </ul>
Images	<ul style="list-style-type: none"> <li>• Windows Server 2012 R2               <ul style="list-style-type: none"> <li>o Provisioning Method: Provisioning Services</li> <li>o FlexCast model: Published apps</li> </ul> </li> <li>• Windows 10               <ul style="list-style-type: none"> <li>o Provisioning Method: Provisioning Services</li> <li>o FlexCast model: Hosted VDI (random, non-persistent)</li> </ul> </li> </ul>
Citrix Policies	<ul style="list-style-type: none"> <li>• Policies that will be applied to all Virtual Delivery Agent machines:               <ul style="list-style-type: none"> <li>o Client drive redirection: Enabled</li> <li>o Client fixed drives: Allowed</li> <li>o Client printer redirection: Prohibited</li> <li>o Client USB device redirection: Prohibited</li> <li>o Clipboard redirection: Allowed (text only)</li> </ul> </li> </ul>
Profiles	<ul style="list-style-type: none"> <li>• Citrix Profile Management will be used for all Virtual Delivery Agent machines.</li> </ul>

During the quality assurance review, the architect observes that one of these design decisions does NOT align with the business driver priorities.

Which design decision should be changed to match the prioritization of the business drivers?

- A. Images
- B. Profiles
- C. Authentication Methods
- D. Citrix Policies

**Answer: D (LEAVE A REPLY)**

Note: The Citrix policies are not in compliance with the first requirement of security.

### NEW QUESTION: 89

Scenario: A Citrix Architect needs to design a new XenApp and XenDesktop environment. The customer previously installed all applications locally on managed laptops and desktops but is willing to evaluate other application delivery methods as part of the new deployment. The environment will be standardized on Windows 10 and Windows Server 2016 for the Virtual Delivery Agent (VDA) machines.

As part of an application analysis performed earlier in the project, the information in the Exhibit was collected regarding one of the required applications.

Click the Exhibit button to view the information.

Category	Detail
Application Name	Workspace CRM Pro
Description	Customer Relationship Management application - Users can view and edit information about current customers and sales leads.
Usage	This application will be used by the sales department.
OS Compatibility	The application is compatible with the target operating systems.
Special Considerations	The sales team must access the application from laptops, tablets, and mobile devices.

Additionally, the customer has the following objectives:

Minimize the amount of additional infrastructure components.

Minimize the server hardware required.

How should the architect install the application?

**A.** On an Application Layer using Citrix App Layering, be included in a layered image, and accessed through a virtual desktop session

**B.** Stream it to a VDA machine using Microsoft App-V and accessed through a virtual desktop session

**C.** Directly on a Server OS VDA machine and accessed from the endpoint as a published application

**D.** Directly on a VDA machine image and accessed through a virtual desktop session

**E.** Directly on endpoint devices and included in a virtual desktop session using the Local App Access feature

**Answer: C** ([LEAVE A REPLY](#))

Virtual Apps will provide more users per server so less servers while Virtual Desktops will be 1 user per VD so more servers to sustain the same amount of apps instance.

#### **NEW QUESTION: 90**

Scenario: An IT department moved its entire infrastructure to Microsoft Azure. It is utilizing multiple Azure regions for redundancy. It also uses all Azure regions as resource locations within Citrix Virtual Apps and Desktops Service in Citrix Cloud.

Which storage replication option will allow data to be read from both the primary and secondary locations?

**A.** Geo-redundant storage (GRS)

**B.** Locally redundant storage (LRS)

**C.** Zone-redundant storage (ZRS)

**D.** Read-access geo-redundant storage (RA-GRS)

**Answer: A** ([LEAVE A REPLY](#))

#### **NEW QUESTION: 91**

Scenario: A Citrix Architect is creating a conceptual architecture for a Citrix Virtual Apps and Desktops environment. Based on some initial the company's business goals and objectives, the architect has collected the information shown in the exhibit.

Click the Exhibit button to view the information.

Requirement	Detail
Number of Users	2,000
Data Centers	One on-premises data center
Available Hardware	Available hardware is limited, as all servers are in use at nearly full capacity.
Administrative Team	Three dedicated Citrix Administrators will be supported by the IT team members who are mostly at full capacity with maintenance and change tickets.
Level of Desired Control	Basic
Additional Considerations	The new solution should be highly available, where possible, and within a responsible financial budget

Which delivery model should the architect recommend?

- A. Multi-Site, multi-zone, and multiple on-premises data centers
- B. Single-Site, single-zone, and single on-premises data center
- C. Single-Site in Citrix Cloud, public cloud, and on-premises resource locations
- D. Multi-Site in Citrix Cloud, and multiple public cloud resource locations

**Answer: D (LEAVE A REPLY)**

**Valid 1Y0-403 Dumps** shared by Actual4test.com for Helping Passing 1Y0-403 Exam! Actual4test.com now offer the **newest 1Y0-403 exam dumps**, the Actual4test.com 1Y0-403 exam **questions have been updated** and **answers have been corrected** get the **newest** Actual4test.com 1Y0-403 dumps with Test Engine here:

[https://www.actual4test.com/1Y0-403\\_examcollection.html](https://www.actual4test.com/1Y0-403_examcollection.html) (244 Q&As Dumps, **30%OFF**

**Special Discount: Freepdfdumps)**

#### NEW QUESTION: 92

Scenario: A Citrix Architect is configuring a multi-location profile strategy as part of a large Citrix Virtual Apps and Desktops solution. The architect needs to implement a single policy that sets the profile path for all users and distributes the user profiles between 3 shares and 9 file servers.

New York users: Server: NYC-FS.company.lan - Share: NYC-Profiles\$

Miami users: Server: MIA-FS.company.lan - Share: MIA-Profiles\$

San Francisco users: Server: SFO-FS.company.lan - Share: SFO-Profiles\$

Which value constitutes a valid path for use with a Citrix Profile Management policy?

- A. Error! Hyperlink reference not valid.
- B. Error! Hyperlink reference not valid.

"You configure the path to the user store as: Error! Hyperlink reference not valid."

<https://docs.citrix.com/en-us/profile-management/current-release/plan/multiple-file-servers.html>

- C. Error! Hyperlink reference not valid.
- D. Error! Hyperlink reference not valid.

Answer: ([SHOW ANSWER](#))

**NEW QUESTION: 93**

Scenario: An infrastructure team has stated that the new Citrix Virtual Apps and Desktops virtualization host will have the specifications shown in the exhibit.

Click the Exhibit button to view the specifications.

CPU	4 sockets, 12 cores with hyper-threading
RAM	512 GB

The design document calls for the VMs to have 2 CPUs and 4 GB RAM. Approximately how many virtual desktops can be hosted on each physical server?

- A. 190
- B. 240
- C. 120
- D. 60

Answer: ([SHOW ANSWER](#))

Reference:

<https://docs.citrix.com/en-us/tech-zone/design/design-decisions/single-server-scalability.html>  
(Example 1)

**NEW QUESTION: 94**

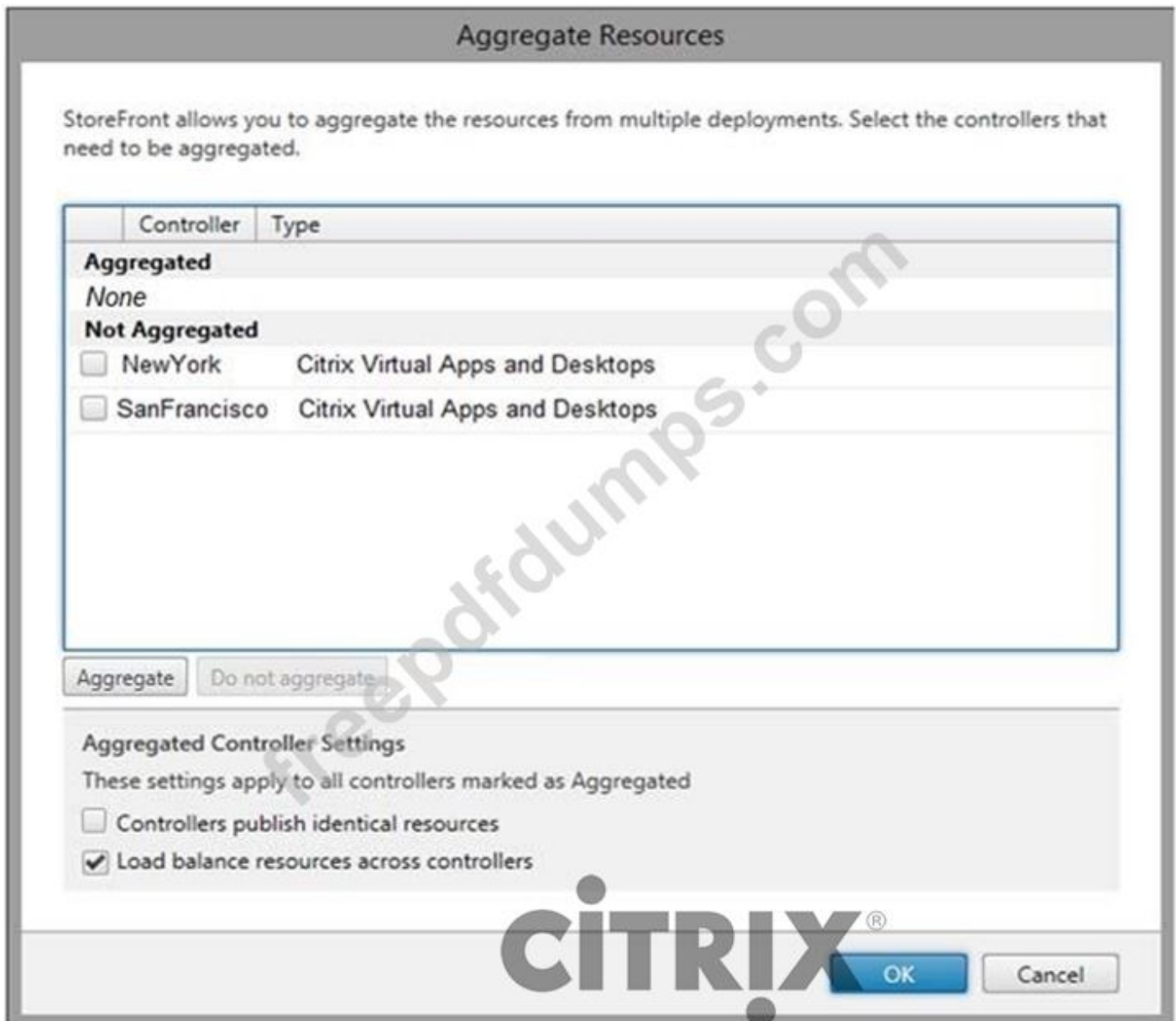
Scenario: A Citrix Architect is implementing a new Citrix Virtual Apps and Desktops environment.

The customer has 3 requirements:

- All users must be able to aggregate resources from all Sites.
- Both Sites should be treated as 1 equivalent farm set.
- User connections should be directed to the New York Site with failover to San Francisco.

Click the Exhibit button to view the StoreFront configurations.

Exhibit 1.



Based on the configurations, requirement 1 is \_\_\_\_\_, requirement 2 is \_\_\_\_\_, and requirement 3 is \_\_\_\_\_. (Choose the correct option to complete the sentence.)

- A. met; met; met
- B. NOT met; NOT met; NOT met
- C. NOT met; met; NOT met
- D. met; NOT met; met
- E. NOT met; met; met
- F. met; met; NOT met
- G. met; NOT met; NOT met

**Answer: G (LEAVE A REPLY)**

**NEW QUESTION: 95**

Scenario: The IT team of a company configured its Citrix environment on Microsoft Azure. Load on the servers is nominal during the off season, but during peak season, load increases on the

infrastructure servers. This load varies from year to year. A Citrix Architect is asked to design a solution that dynamically increases and decreases the number of infrastructure servers. What should the architect recommend the IT team create in Microsoft Azure to meet this demand?

- A. Availability sets
- B. Resource group
- C. Scale sets
- D. Availability domains

**Answer: B (LEAVE A REPLY)**

Explanation/Reference: <https://docs.citrix.com/en-us/advanced-concepts/implementation-guides/citrix-adc-vpx-on-azure-autoscale-deployment-guide.html>

**NEW QUESTION: 96**

A Citrix Architect is designing a new Citrix Virtual Apps and Desktops environment. The IT team maintains 12 Citrix Hypervisor hosts that are available to build the new Citrix environment. During the project kickoff meeting, management states:

"We need a robust infrastructure that can handle large user loads, improve IT efficiency, guarantee minimal downtime, and protect the network and its resources from corruption." Click the Exhibit button to view the existing infrastructure details.

Hardware/Network	Details
Citrix Hypervisors	Heterogeneous hosts use the same software version and patch levels.
Resource: CPU, Memory, etc.	Uses the same CPU vendor and similar CPU models, with each host containing 128 GB RAM.  Local storage of 100 GB is available.
Network Storage	Network File System (NFS) is used for file storage.  Linux GFS2 shared block storage is used for the hypervisor hosts.
Network	All hosts are on the same subnet, with similar static IP range on the management port.
Virtual Machines (VMs)	Virtual disks are on shared storage.  No local DVD drive is configured.

Which configuration should the architect use to meet the requirements for the new Citrix environment?

- A. Create multiple resource pools with at least 3 hosts in each pool for the infrastructure and Citrix workloads, and enable high availability with clustered pools using GFS2 as the heartbeat storage repositories.
- B. Create multiple resource pools with at least 3 hosts in each pool for the infrastructure and Citrix workloads, and enable high availability with clustered pools using local storage repositories.

C. Create a single resource pool containing all hosts for the infrastructure and Citrix workloads, and enable default high availability using NFS as the heartbeat storage repository.

D. Create a single resource pool containing all hosts for the infrastructure and Citrix workloads, and enable default high availability using GFS2 as the heartbeat storage repository.

Answer: A ([LEAVE A REPLY](#))

**NEW QUESTION: 97**

Scenario: A Citrix Architect is designing a new Citrix Virtual Apps and Desktops environment. The architect has identified the Resource Layer requirements shown in the exhibit.

Click the Exhibit button to view the requirements.

User Group	Persistent User Settings Required?	Assigned FlexCast Model	Access to Profile Folders Required?	Additional Requirements
Finance	No	Published Apps	Yes	Application-specific data should be preconfigured within the profile.  For security reasons, data and the profile should be deleted when the published application is closed.
Customer Service	No	Published Desktop (Server OS)	No	None
Executives	Yes	Remote PC Access	Yes, the following folders should be available: <ul style="list-style-type: none"> <li>• Contacts</li> <li>• Desktop</li> <li>• Downloads</li> <li>• Favorites</li> <li>• My Documents</li> </ul>	The ability to use resources locally while offline is required.
Graphic Designers	Yes	Hosted VDI (Static)	No	None

Additionally, management identified 2 general Resource Layer requirements:

The time required to configure the solution should be minimized.

Different user groups can use different profile solutions.

Which profile type should the architect consider for the Finance Group?

- A. Hybrid
- B. Local
- C. Mandatory
- D. Roaming

Answer: ([SHOW ANSWER](#))

**NEW QUESTION: 98**

Scenario: A Citrix Architect is designing a new Citrix Virtual Apps and Desktops environment.

The table in the exhibit lists details about the requirements of the current user groups and their Virtual Delivery Agent (VDA) machine workloads.

Click the Exhibit button to view the table.

User	Scaling Priority	VDA Type	Workload Weight	CPU Overcommit	Virtual CPUs per VM	VMs per Host	Users per VM
User Group 1	Scalability	Desktop	Medium	8:1	2	90	1
User Group 2	User Experience	Server	Medium	1.5:1	6	16	20
User Group 3	Scalability	Desktop	Heavy	6:1	4	36	1
User Group 4	Scalability	Server	Medium	1.5:1	6	27	20

The architect should scale the hardware used to host the virtual machines (VMs) for User Group 1 to

\_\_\_\_\_ cores. (Choose the correct option to complete the sentence.)

- A. 24
- B. 64
- C. 32
- D. 16
- E. 96

**Answer:** ([SHOW ANSWER](#))

#### NEW QUESTION: 99

Scenario: A Citrix Architect is designing a new Citrix Virtual Apps and Desktops environment. Currently, the environment is configured with 2 locations with identical Citrix Virtual Desktops Sites. Each Site has 2 Delivery Controllers, 2 StoreFront servers, and 1 Citrix ADC high-availability pair. The same applications have been published from both Sites for all users. Two zones (Zone A and Zone B) are configured in each Site with 1 Delivery Controller in each zone. The Microsoft Exchange server is only accessible from Virtual Delivery Agent (VDA) machines in Zone A in each Site.

Six access requirements have been identified:

Users should have a single URL when accessing resources from different Sites.

Users should always connect to the data center closest to their location.

Applications added to Favorites within the Citrix Workspace app should be retained when accessed from different Sites.

Launched applications and desktops should always connect through a local Citrix ADC.

No duplication of applications published from different Sites.

Microsoft Outlook should always launch in Zone A.

What should the architect recommend to ensure that Microsoft Outlook always launches from Zone A for every user?

- A. Designate Zone A as the Home Zone for all users.

"If that application has a configured zone association (an application home), then the preferred zone is the home zone for that application." <https://docs.citrix.com/en-us/citrix-virtual-apps-desktops/1912-ltsr/manage-deployment/zones.html#tailoring-zone-preference>

- B. Configure Zone A as the application Home Zone for Microsoft Outlook.
- C. Configure zone preference based on user location.

D. Move a Delivery Controller from Zone B to Zone A.

Answer: B ([LEAVE A REPLY](#))

**NEW QUESTION: 100**

A Citrix Architect is designing a new XenApp and XenDesktop environment. The IT team would like to deploy Windows 10 persistent VDI and Windows Server 2016 non-persistent hosted shared desktops.

The IT team has used physical servers in the past to host the IT infrastructure but would like to move to a hypervisor solution for the new environment. At the same time, the hardware and storage costs for the new deployment should be minimized where possible.

The IT team has requested there are no company-wide outages during hardware updates and maintenance.

The architect should recommend that failover clusters and live migration be used for \_\_\_\_\_ and that these resource clusters should use \_\_\_\_\_ storage. (Choose the correct option to complete the sentence.)

- A. Citrix infrastructure and dedicated desktops only; local
- B. all XenApp and XenDesktop components; SAN
- C. Citrix infrastructure only; local
- D. all XenApp and XenDesktop components; local
- E. Citrix infrastructure only; SAN

Answer: C ([LEAVE A REPLY](#))

**NEW QUESTION: 101**

Scenario: A customer who installed all applications locally on managed laptops and desktops is willing to evaluate other application delivery methods as part of a new design created by a Citrix Architect. The environment will be standardized on Windows 10 and Windows Server 2016 for the Virtual Delivery Agent (VDA) machines.

As part of an application analysis performed earlier in the project, the information shown in the exhibit was collected regarding 1 of the required applications.

Click the Exhibit button to view the information.

Category	Detail
Application Name	Workspace Inventory 3.0
Description	The inventory tracker and management software will be used by most users to perform data entry tasks.  Managers will use the application to view data and create reports.
Usage	The application will be used by most employees in the organization.
OS Compatibility	The application is compatible with the target operating systems.
Special Considerations	None

Additionally, the customer has 3 objectives:

- Minimize the amount of additional infrastructure components.
- Utilize thin clients as endpoints in order to reduce costs.

- Prohibit direct user access to the thin client operating system.

How should the architect install the application?

- A.** Install it on an Application Layer using Citrix App Layering and include it in a layered image, and access it through a virtual desktop session.
- B.** Install it on an Application Layer using Citrix App Layering, then present it to assigned users as an Elastic Layer during a virtual desktop.
- C.** Stream it to a VDA machine using Microsoft App-V and access it through a virtual desktop session.
- D.** Install it directly on endpoint devices, and include it in a virtual desktop session using the Local App Access feature.
- E.** Install it directly on a VDA machine image and access it through 2 virtual desktop session.

**Answer: B** ([LEAVE A REPLY](#))

### **NEW QUESTION: 102**

Scenario: A Citrix Architect needs to implement a new XenDesktop environment for an engineering company. The IT team has purchased 1,000 XenDesktop Enterprise licenses. They will deploy Microsoft Office productivity applications to all users. Users access XenApp sessions from company offices using thin client devices and remotely through NetScaler Gateway using personal devices.

The company requires IT to produce a report of all XenApp sessions and connection failures for the previous month.

Which two actions does the architect need to take to support these requirements? (Choose two.)

- A.** Implement NetScaler Management and Analytics System (MAS).
- B.** Configure GroomFailuresRetentionDays to 31 days.
- C.** Configure GroomSessionsRetentionDays to 31 days.
- D.** Purchase NetScaler Gateway Universal licenses.
- E.** Purchase XenDesktop Platinum licenses.

**Answer: (SHOW ANSWER)**

<https://developer-docs.citrix.com/projects/delivery-controller-sdk/en/latest/Monitor/Set-MonitorConfiguration/>

<https://www.citrix.com/blogs/2017/08/23/application-related-session-failure-reporting-in-citrix-director-7->

License Type	Out-of-Box Retention Days	Maximum configurable limit in Days	Maximum records in Database
Platinum	1	31	1 Million (Fixed)
Enterprise	1	31	1 Million (Fixed)
Non-Platinum Non-Enterprise	1	7	1 Million (Fixed)

GroomFailuresRetentionDays	<b>CITRIX®</b>	Determines how many days to keep MachineFailureLog and ConnectionFailureLog records after these are created.	false	false
----------------------------	----------------	--	-------	-------

### NEW QUESTION: 103

Scenario: A Citrix Architect needs to design an environment with optimal resource allocation for a large company. The company requires a highly available StoreFront design for 40,000 users. Each logs on once per hour, and the average user has 50 resources available. The company only has one datacenter.

The architect should recommend configuring a minimum of \_\_\_\_\_ StoreFront servers, each with \_\_\_\_\_ vCPUs and \_\_\_\_\_ GB of RAM when all the connections are through Citrix Receiver for Web. (Choose the correct option to complete the sentence.)

- A. 2; 4; 4
- B. 4; 2; 4
- C. 2; 4; 6
- D. 4; 2; 2

**Answer: C (LEAVE A REPLY)**

The throughput of a single StoreFront server can also be increased by assigning more virtual CPUs to the system, with four virtual CPUs enabling up to 55,000 user connections per hour and eight virtual CPUs enabling 80,000 connections per hour.

The minimum recommended memory allocation for each server is 4GB. When using Citrix Receiver for Web, assign an additional 700 bytes per resource, per user in addition to the base memory allocation. As with using Citrix Receiver for Web, when using Citrix Workspace app, design environments to allow an extra 700 bytes per resource, per user on top of the base 4 GB memory requirements for this version of StoreFront.

- Note that Receiver for Web users will consume more RAM on average than native Receiver users.
- Minimum of 4 GB of RAM is recommended per StoreFront server in all cases as a baseline

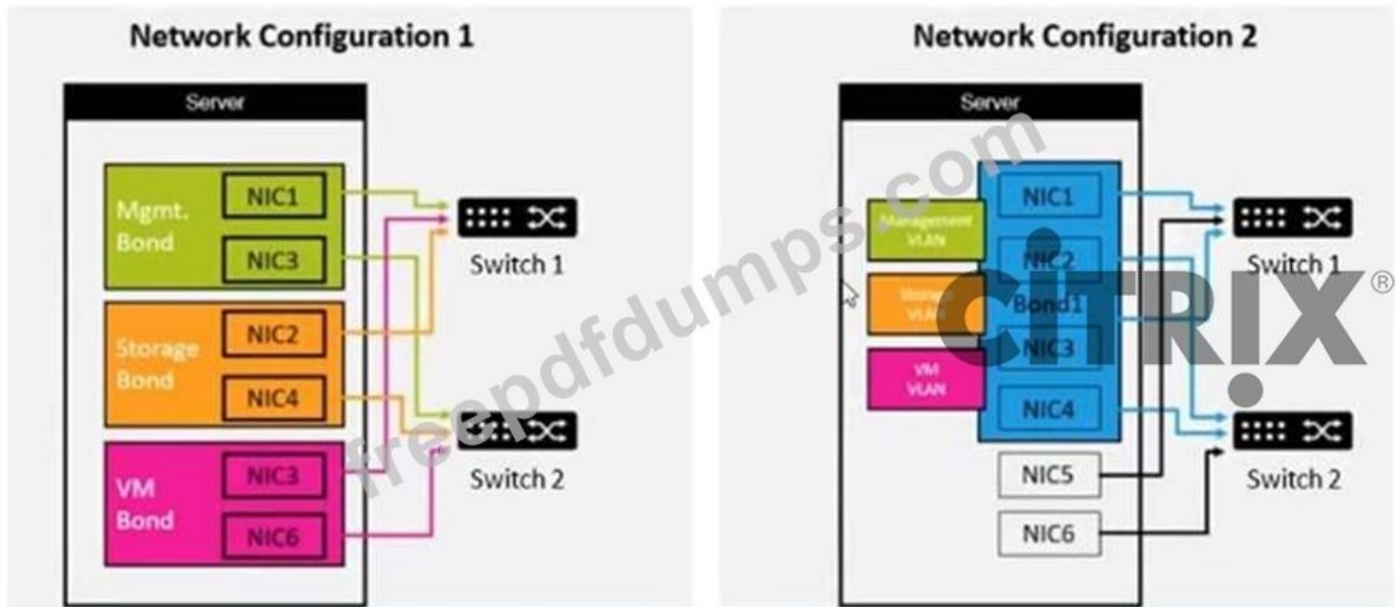
- Additionally, more sites/farms enumerated per store will increase both CPU utilization and server response time.

<https://docs.citrix.com/en-us/storefront/current-release/plan.html>

### NEW QUESTION: 104

Scenario: A Citrix Architect is performing a XenApp and XenDesktop design. During a discussion with the server hardware team, two potential network configurations are proposed for the XenServer hosts.

Click the Exhibit button to view the network configurations.



Which statement will support a decision to use Network Configuration 2?

- A. It will ensure that virtual machine workloads do NOT interfere with each other.
- B. It will provide greater security for all traffic types.
- C. It will achieve a higher level of redundancy for the different traffic types.
- D. It will reserve more bandwidth for virtual machine traffic.

**Answer: C (LEAVE A REPLY)**

[https://www.citrix.com/content/dam/citrix/en\\_us/documents/white-paper/security-recommendations-when-deploying-citrix-xenserver.pdf](https://www.citrix.com/content/dam/citrix/en_us/documents/white-paper/security-recommendations-when-deploying-citrix-xenserver.pdf)

### NEW QUESTION: 105

Scenario: A Citrix Architect is designing a new Citrix Virtual Apps and Desktops environment. Two Control Layer security requirements have been identified:

For security reasons, it is unacceptable to use default ports for FlexCast Management Architecture (FMA) services.

Management access to PowerShell and Citrix Studio should be restricted to management workstations by granular firewall rules.

Which combination of ports can the architect assign to the listed Citrix services to meet the Control Layer security requirements?

- A. VDA Registration Port: 8081 XML SSL Port: 8082

SDK Port: 8083

**B.** VDA Registration Port: 8081 XML SSL Port: 8083

SDK Port: 8083

**C.** VDA Registration Port: 8081 XML SSL Port: 443

SDK Port: 80

**D.** VDA Registration Port: 80 XML SSL Port: 80

SDK Port: 8083

**Answer: C (LEAVE A REPLY)**

### **NEW QUESTION: 106**

Scenario: A Citrix Architect is designing a new Citrix Virtual Apps and Desktops environment. The Site will contain two Delivery Controllers. All machines are running on a single hypervisor platform. As part of the deployment, management has advised they want a database high-availability (HA) solution to protect the environment against the loss of a physical server.

Additional considerations for the SQL HA:

Downtime for Citrix administrative functions should be minimized.

Additional hardware or resources should be minimized.

Limited knowledge available to configure and maintain SQL infrastructure.

Which HA configuration should the architect use for this deployment?

**A.** SQL Mirroring

**B.** SQL Always On

**C.** Local Host Cache

**D.** VM-Level HA

**E.** SQL Clustering

**Answer: C (LEAVE A REPLY)**

**Valid 1Y0-403 Dumps** shared by Actual4test.com for Helping Passing 1Y0-403 Exam!

Actual4test.com now offer the **newest 1Y0-403 exam dumps**, the Actual4test.com 1Y0-403 exam **questions have been updated** and **answers have been corrected** get the **newest** Actual4test.com 1Y0-403 dumps with Test Engine here:

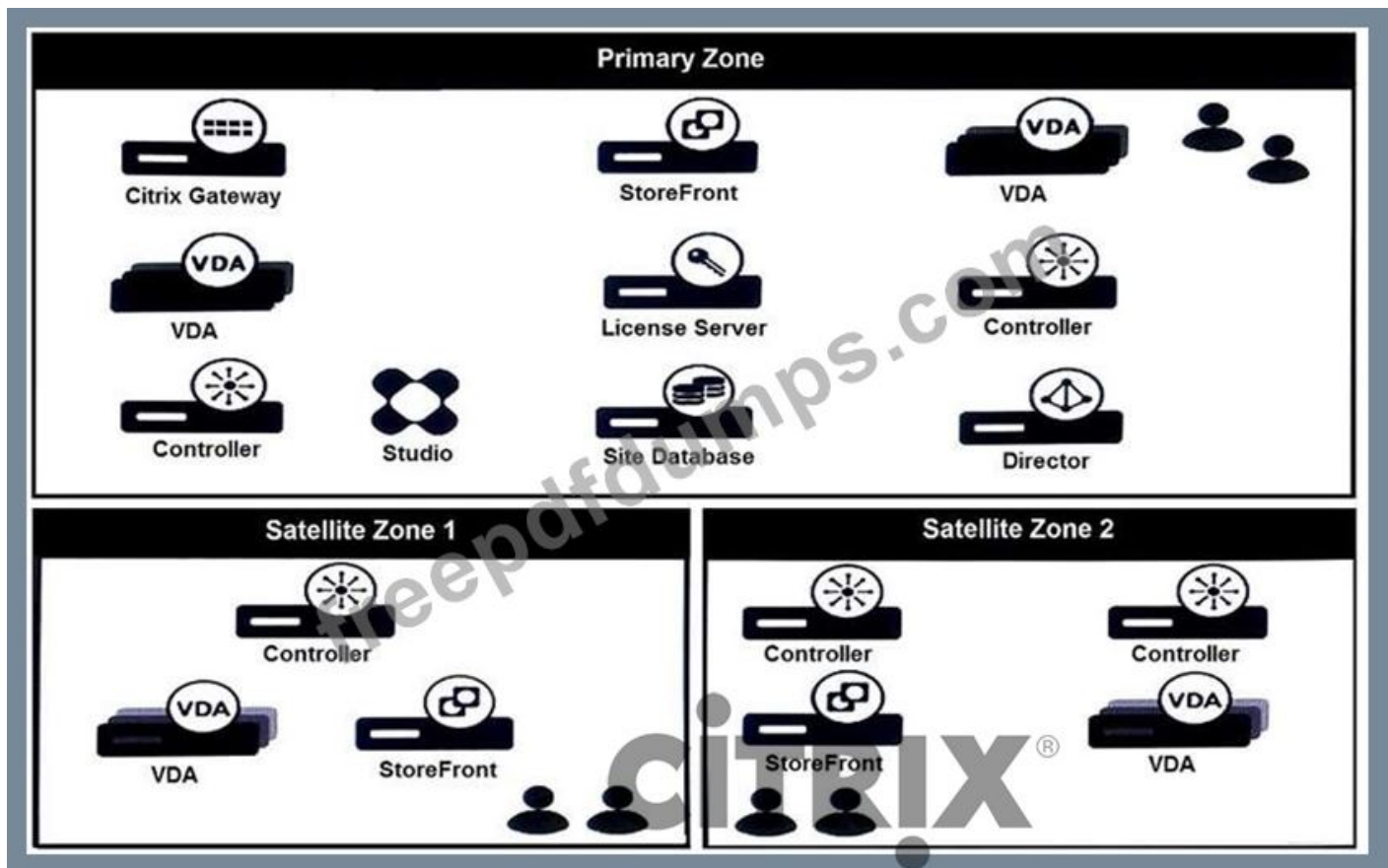
[https://www.actual4test.com/1Y0-403\\_examcollection.html](https://www.actual4test.com/1Y0-403_examcollection.html) (244 Q&As Dumps, **30%OFF**

**Special Discount: Freepdfdumps)**

### **NEW QUESTION: 107**

Scenario: A Citrix Architect needs to assess a Citrix Virtual Apps and Desktops environment. The Citrix Virtual Apps and Desktops diagram in the exhibit gives details about the current Site and zone design.

Click the Exhibit button to view the diagram.



Which statement is correct if all Delivery Controllers in the Primary Zone fail?

- A. Virtual Delivery Agent (VDA) machines in the Primary Zone will NOT register within Satellite Zone 1 or Satellite Zone 2.
- B. Satellite Zone 2 will be promoted and the Primary Zone Virtual Delivery Agent (VDA) machines will register within Satellite Zone 2.
- C. Virtual Delivery Agent (VDA) machines in the Primary Zone will register within Satellite Zone 2.
- D. Virtual Delivery Agent (VDA) machines in the Primary Zone will register within Satellite Zone 1.

<https://docs.citrix.com/en-us/xenapp-and-xendesktop/7-15-ltsr/manage-deployment/zones.html#where-vdas-register-and-where-controllers-fail-over>

**Answer: A (LEAVE A REPLY)**

### NEW QUESTION: 108

Scenario: A Citrix Architect needs to design a new XenApp and XenDesktop environment. Citrix Provisioning Services has been selected for image management.

Which two RAID levels should the architect use for the storage hosting the Provisioning Service write cache? (Choose two.)

- A. RAID 0
- B. RAID 1
- C. RAID 10
- D. RAID 6
- E. RAID 5

**Answer: (SHOW ANSWER)**

<https://docs.citrix.com/en-us/xenapp-and-xendesktop/7-15-ltsr/citrix-vdi-best-practices/design/design-userlayer5.html> To choose the optimal RAID level, it is necessary to consider the IOPS and read/write ratio generated by a given application or workload in combination with the individual capabilities of a RAID level. For hosting read intensive workloads, such as the Provisioning Services vDisk store, RAID levels that are optimized for read operations such as RAID 1, 5, 6, 10 are optimal. This is because these RAID levels allow read operations to be spread across all disks within the RAID set simultaneously. For hosting write intensive workloads, such as Provisioning Services write cache and Machine Creation Services differencing disks, RAID levels such as RAID 1 or 10 are optimal, as these are optimized for writes and have a low write penalty.

### **NEW QUESTION: 109**

What are three things a Citrix Architect should when using thin clones with Machine Creation Services (MCS)? (Choose three.)

- A. Storage and virtual machine (VM) migration may be more complex when compared to full clones.
- B. Storage fragmentation may occur over time.
- C. Storage space should be closely monitored.
- D. Higher storage space is required when compared to full clones.
- E. Provisioning speed is slower when compared to full clones.

**Answer: B,C,D (LEAVE A REPLY)**

### **NEW QUESTION: 110**

Scenario: During an assessment, a Citrix Architect is asked to review a Citrix policy setting that is NOT being applied as intended. The policy was intended to allow any user from the Managers group who is accessing Virtual Delivery Agent (VDA) machines within the "Win2012 Desktops" Delivery Group to access local client drives from within the HDX session.

However, testing verifies that users from the Managers group are NOT able to view their endpoint's drives from within their session. While verifying the policy settings, the architect notes several misconfigurations.

Click the Exhibit button to view information collected by the architect during the investigation.

Issue	Description
Policy engine usage	An "Allow client fixed drives access" Citrix policy was configured in both Citrix Studio and within an Active Directory Group Policy.
Policy priority	In Citrix Studio, the "Allow client fixed drives access" policy was given priority number 8. A baseline policy including settings from the Security and Control template was given priority 1.  In Active Directory, within the GPO containing Citrix policies, the "Allow client fixed drives access" policy was given priority number 1. A baseline policy including settings from the High Server Scalability template was given priority 8.
Policy scope	In Citrix Studio, the "Allow client fixed drives access" policy was applied to the "Win2012 Desktops" Delivery Group.  In Active Directory, within the GPO containing Citrix policies, the "Allow client fixed drives access" policy was applied to the Managers group.
Policy processing	In Active Directory, a GPO with Loopback Policy Processing was set to "Enabled" and in "Replace" mode was linked to the OU containing the Delivery Controllers.
Policy placement	In Active Directory, the GPO containing Citrix policies was linked to the OU containing the Virtual Delivery Agent machines.

Which action would permit the "Allow client fixed drives access" policy to apply to the Managers group?

- A. Add a security filter to the GPO containing Citrix policies in the Group Policy Management Console.
- B. Change the assignment of the policy in Citrix Studio.
- C. Change the priority of the policy in Citrix Studio.
- D. Change the link location for the Loopback processing GPO in the Group Policy Management Console.

**Answer: D (LEAVE A REPLY)**

The policy for loopback processing mode needs to apply to the machines with the VDA, not the controllers.

### NEW QUESTION: 111

Scenario: A Citrix Architect needs to design a new XenApp and XenDesktop environment.

The architect has identified the Resource Layer requirements shown in the Exhibit.

Click the Exhibit button to view the requirements.

User Group	Do user settings need to persist?	Assigned FlexCast model	Access required to profile folders?	Additional Requirements
Accountants	Yes	Published apps	Yes, the following folders should be available: <ul style="list-style-type: none"> <li>• Contacts</li> <li>• Desktop</li> <li>• Favorites</li> <li>• My Documents</li> </ul>	Needs synchronization of a specific application log file within the AppData folder
Executives	Yes	Remote PC access	Yes, the following folders should be available: <ul style="list-style-type: none"> <li>• Contacts</li> <li>• Desktop</li> <li>• Downloads</li> <li>• Favorites</li> <li>• My Documents</li> </ul>	Needs ability to use resource locally while offline
Graphic Designers	Yes	Hosted VDI (Static / persistent, uses vGPU)	No	No
Customer Service	No	Published Desktop	No	No

Additionally, management at the organization has identified the following general Resource Layer requirements:

▪ The profile solution should be centrally managed.

▪ The profile solution should minimize logon and logoff times as much as possible.

▪ User groups do NOT need to use the same profile type.

▪ Citrix Director should be used for monitoring profiles.

Which profile type should the architect use for the Executives group?

- A. Local
- B. Microsoft roaming
- C. Citrix Profile Management
- D. Mandatory

**Answer: B (LEAVE A REPLY)**

<https://docs.citrix.com/en-us/xenapp-and-xendesktop/7-15-ltsr/citrix-vdi-best-practices/design/design-userlayer3>

### NEW QUESTION: 112

Scenario: A Citrix Architect needs to manage the disaster recovery (DR) process for a Citrix Virtual Apps and Desktops environment. The environment currently consists of an active data center typically accessed by users, and a DR data center used in the event that a disaster impacts the primary data center.

Management has made it a priority to minimize the loss of data when failing over between data centers.

The environment has failed over from the primary data center to the DR data center and the primary data center has subsequently been recovered to its normal state.

What is the appropriate sequence of steps that the architect should follow to return to normal operations after the primary data center's stability is confirmed?

- A.** Complete replication to the primary data center, terminate/drain existing sessions in the DR data center, block access to the DR data center, enable access in the primary data center, and configure replication back to the DR data center.
- B.** Complete replication to the primary data center, block access to the DR data center, terminate/drain existing sessions in the DR data center, configure replication back to the DR data center, and enable access in the primary data center.
- C.** Block access to the DR data center, terminate/drain existing sessions in the DR data center, complete replication to the primary data center, configure replication back to the DR data center, and enable access in the primary data center.
- D.** Block access to the DR data center, complete replication to the primary data center, terminate/drain existing sessions in the DR data center, enable access in the primary data center, and configure replication back to the DR data center.
- E.** Terminate/drain existing sessions in the DR data center, complete replication to the primary data center, block access to the DR data center, enable access in the primary data center, and configure replication back to the DR data center.
- F.** Terminate/drain existing sessions in the DR data center, block access to the DR data center, complete replication to the primary data center, configure replication back to the DR center, and enable access in the primary data center.

**Answer:** ([SHOW ANSWER](#))

### **NEW QUESTION: 113**

Scenario: During an assessment of a Citrix Infrastructure, a Citrix Architect finds that there are four active Sites. Each Site has one NetScaler SDX pair and two StoreFront servers in a server group to allow access for internal and external users. Users have to use different URLs when they access resources from different Sites. Single-factor authentication is used for both internal and external access. NetScaler appliances are placed in the DMZ with the appropriate firewall ports configured to allow Citrix traffic. Many of the internal users connect using corporate-owned laptops and some external users also connect using personal devices.

Management is planning to create one more Site and has asked the architect to perform scalability testing and advise how many NetScaler appliances are needed for the new Site.

What is the primary determining factor that the architect can use to help identify the appropriate NetScaler platform in this scenario?

- A.** SSL VPN
- B.** SSL Throughput
- C.** ICA Proxy
- D.** Ethernet Ports

**Answer:** **B** ([LEAVE A REPLY](#))

<http://www.barryschiffer.com/citrix-netscaler-platform-sizing-guide/>

When choosing between platform and models there are three important choices:

Are you allowed to virtualize DMZ functionality; If not the answer is always MPX The amount of Bandwidth; The amount of SSL transactions.

#### **NEW QUESTION: 114**

Scenario: Engineers at a new company developed their product and infrastructure in Microsoft Azure. The engineers have reached out to a Citrix Architect to help design an Azure infrastructure to support publishing applications using the Citrix Virtual Apps and Desktops service. Costs need to be kept to a minimum.

Which Azure virtual machine (VM) series provides the lowest cost per user while also providing good performance?

- A.** A-series
- B.** B-series
- C.** H-series
- D.** D-series

**Answer: D (LEAVE A REPLY)**

Explanation/Reference: <https://docs.citrix.com/en-us/tech-zone/design/reference-architectures/virtual-apps-and-desktops-azure.html>

#### **NEW QUESTION: 115**

Scenario: A Citrix Architect is designing a new 2,000-user Citrix Virtual Apps and Desktops environment.

The environment will use Windows Server 2016 for all Site infrastructure components (Delivery Controllers, StoreFront servers, and Citrix Director). Machine Creation Services (MCS) will be used to provision Virtual Delivery Agent (VDA) machines. The environment will include 2 primary use cases:

- Windows Server 2016 VDA machines providing hosted applications
- Windows 10 VDA machines providing random, non-persistent VDI

The IT team has NOT yet purchased the hardware that will be used for the environment, and will build the Hardware Layer components based on the architect's recommendations.

How should the architect design the Citrix Hypervisor resource pools based on Citrix leading practices?

- A.** The infrastructure servers and all VDA machines should be located in 1 resource pool.
- B.** The infrastructure servers should be placed in 1 resource pool, and the VDA machines should be placed in a second resource pool.
- C.** Windows Server 2016 machines should be placed in 1 resource pool, and all Windows 10 machines should be placed in a second resource pool.
- D.** Windows Server 2016 VDA machines should be placed in 1 resource pool, Windows 10 machines should be placed in a second resource pool, and the infrastructure servers should be placed in a third resource pool.

**Answer: (SHOW ANSWER)**

**NEW QUESTION: 116**

Scenario: A Citrix Architect needs to design a new XenApp and XenDesktop environment. The architect has identified printing requirements for certain user groups and locations, as shown in the Exhibit.

Click the Exhibit button to view the requirements.

User Groups	Endpoint	Location	Receiver Type	Printer Types	Driver Installed on VDA	Print Features Needed
Accountants	Corporate-owned	Corp HQ Home	Receiver 4.10	Accountant Network Printer	Yes	Special ERP Print
Executives	Corporate-owned	Corp HQ & Home	HTML5 Receiver	Executive Network Printer & Home Printer	Yes	Office Print
Graphic Designers	Mac BYOD	Home	MAC Receiver 4.10	Design Network Printer	No	High-Resolution Print
Customer Service	Corporate-owned	India Branch Office	Receiver 4.10	Main Client Printer	No	Basic A4 Single-Side

Currently, no printer settings or policies have been configured, and as such, the environment is using default settings. Universal Print Server will NOT be used in this design.

Which two settings should the architect configure to allow the Executives group to achieve the desired print behavior and to ensure their print jobs are optimally routed? (Choose two.)

- A. Set Auto-create Client Printers policy to auto-create local printers only
- B. Enable Auto-create PDF Universal Printer policy
- C. Set Direct connections to print servers policy to Enabled
- D. Set Direct connections to print servers policy to Disabled
- E. Configure Session Printers policy
- F. Configure Default Printers policy
- G. Set Auto-create Client Printers policy to auto-create all client printers

**Answer: C,G (LEAVE A REPLY)**

Direct connections to print servers

This setting enables or disables direct connections from the virtual desktop or server hosting applications to a print server for client printers hosted on an accessible network share.

By default, direct connections are enabled.

Enable direct connections if the network print server is not across a WAN from the virtual desktop or server hosting applications. Direct communication results in faster printing if the network print server and the virtual desktop or server hosting applications are on the same LAN.

Disable direct connections if the network is across a WAN or has substantial latency or limited bandwidth.

Print jobs are routed through the user device where they are redirected to the network print server. Data sent to the user device is compressed, so less bandwidth is consumed as the data travels across the WAN.

If two network printers have the same name, the printer on the same network as the user device is used.

<https://docs.citrix.com/en-us/xenapp-and-xendesktop/7-15-ltsr/policies/reference/ica-policy-settings/printing-policy-settings/client-printers-policy-settings.html> Note:G. Why?



A: Set Auto-create Client Printers policy to auto-create local printers only. No, because we want all client printers which will include local (non-network) and network printers.

E: Configure Session Printers policy - No, because we will have to list all the network printers to be auto- created.



**Valid 1Y0-403 Dumps** shared by Actual4test.com for Helping Passing 1Y0-403 Exam! Actual4test.com now offer the **newest 1Y0-403 exam dumps**, the Actual4test.com 1Y0-403 exam **questions have been updated** and **answers have been corrected** get the **newest** Actual4test.com 1Y0-403 dumps with Test Engine here:  
[https://www.actual4test.com/1Y0-403\\_examcollection.html](https://www.actual4test.com/1Y0-403_examcollection.html) (244 Q&As Dumps, **30%OFF**  
**Special Discount: Freepdfdumps**)