

EMC.D-VXR-DY-01.v2025-01-04.q109

Exam Code:	D-VXR-DY-01
Exam Name:	Dell VxRail Deploy Exam
Certification Provider:	EMC
Free Question Number:	109
Version:	v2025-01-04
# of views:	1627
# of Questions views:	1090
https://www.freepdfdumps.com/EMC.D-VXR-DY-01.v2025-01-04.q109.html	

NEW QUESTION: 1

Where can you directly obtain the latest version of the VxRail Appliance PEQ and PEQ Addendum?

- A. Solve Online
- B. <https://dell.com/support>
- C. <https://elabadvisor.psapps.emc.com/licensedtools/download>
- D. Solve Desktop Embedded within

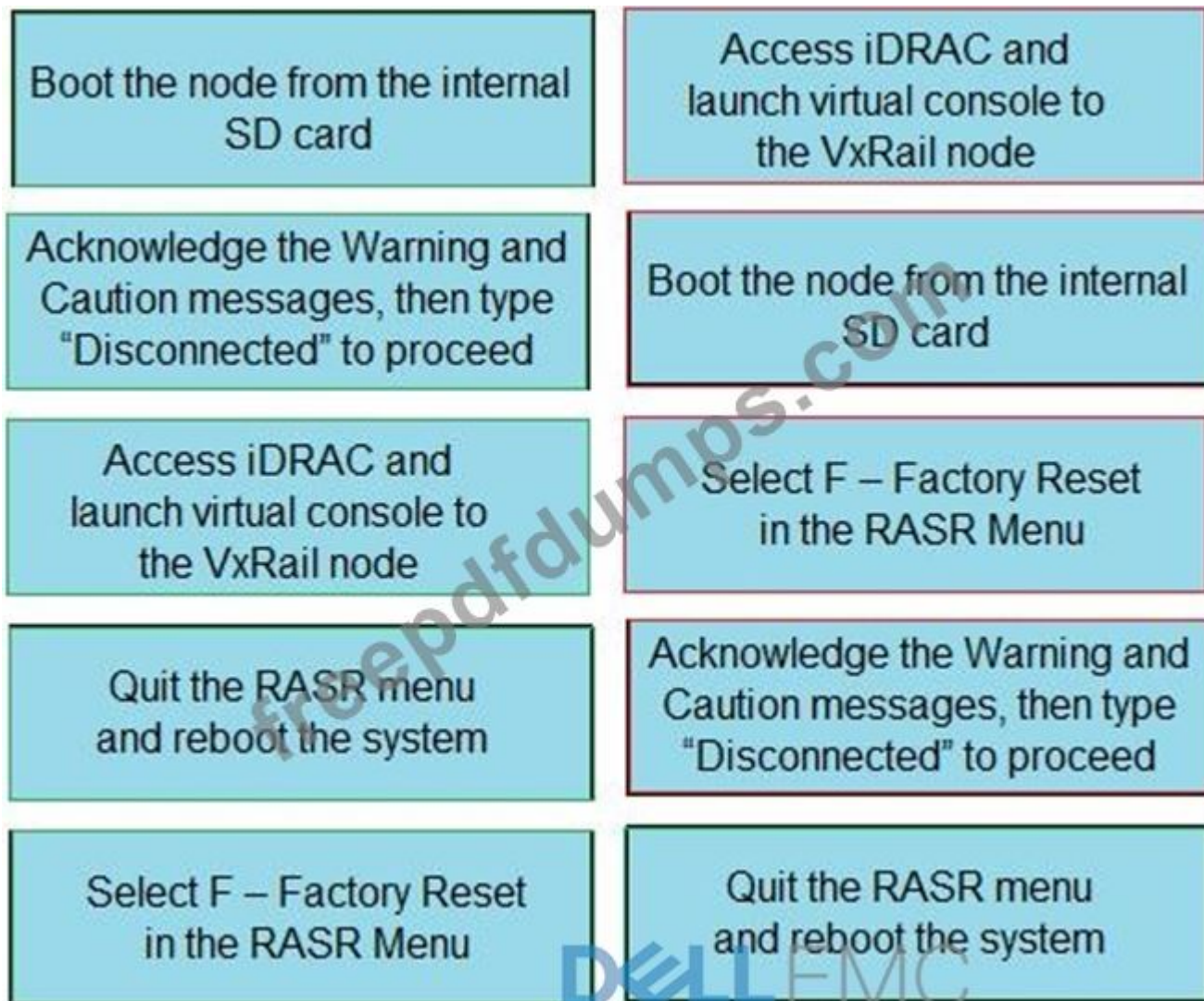
Answer: C ([LEAVE A REPLY](#))

NEW QUESTION: 2

What is the correct sequence of steps to perform a RASR Factory Reset using an SD card?

Boot the node from the internal SD card	Step 1
Acknowledge the Warning and Caution messages, then type "Disconnected" to proceed	Step 2
Access iDRAC and launch virtual console to the VxRail node	Step 3
Quit the RASR menu and reboot the system	Step 4
Select F – Factory Reset in the RASR Menu	Step 5

Answer:



NEW QUESTION: 3

What network setting is the optional configuration on the port group for a customer-supplied VDS before the VxRail cluster is deployed?

- A. Assign NIC uplinks
- B. Enable NIC teaming and failover
- C. Configure NIC teaming and failover
- D. Enable and configure NIOC

Answer: D (LEAVE A REPLY)

NEW QUESTION: 4

A failure occurs during the deployment of a VxRail cluster. You need to look through the marvin.log file to see what could be causing the error.

Where is this file located?

- A. var/log/vmware/marvin
- B. var/log/vmware
- C. var/log/mystic
- D. var/log/vmware/marvin/tomcat/logs

Answer: D ([LEAVE A REPLY](#))

NEW QUESTION: 5

After the installation of a VxRail cluster, the vSAN Health Check shows a hardware compatibility warning.

Where can detailed information about this health check and its resolution be found?

- A. Dell EMC Knowledge Base
- B. VMware Knowledge Base
- C. vCenter Server Help
- D. VxRail Manager Help

Answer: B ([LEAVE A REPLY](#))

NEW QUESTION: 6

What data protection option is included with VxRail?

- A. RecoverPoint for VM Avamar
- B. RecoverPoint for VM vSphere Replication
- C. vSphere Replication NetWorker
- D. PowerProtect Software Data Domain Cloud Tier

Answer: B ([LEAVE A REPLY](#))

NEW QUESTION: 7

In a VxRail internal vCenter deployment, which component(s) are automatically licensed?

- A. vSAN only
- B. None
- C. vCenter and vSAN
- D. vCenter only

Answer: A ([LEAVE A REPLY](#))

NEW QUESTION: 8

What is the maximum number of nodes supported in a standard VxRail Appliance configuration?

- A. 64
- B. 128
- C. 32
- D. 8

Answer: A ([LEAVE A REPLY](#))

NEW QUESTION: 9

A VxRail Stretched Cluster will be configured with four All-Flash nodes at each site based on the following requirements:

PFTT = 1

SFTT = 1

FTM = Erasure Coding

Based on the required usable capacity, what should be the planned capacity of the design?

- A. Single Site Capacity = 133% Total Cluster Capacity = 266%
- B. Single Site Capacity = 100% Total Cluster Capacity = 200%
- C. Single Site Capacity = 200% Total Cluster Capacity = 400%
- D. Single Site Capacity = 150% Total Cluster Capacity = 300%

Answer: ([SHOW ANSWER](#))

NEW QUESTION: 10

The Market Place on a VxRail Manager is empty on a newly deployed system. Testing shows that the Internet is reachable through proxy in the management network.

Which action should be taken to correct this situation?

- A. VxRail Manager has no proxy support.
- B. Manually add the proxy information in the VxRail Manager configuration
- C. Upgrade to latest version and add proxy configuration manually.
- D. Reset the appliance and redeploy with proxy information filled in the deployment process.

Answer: ([SHOW ANSWER](#))

NEW QUESTION: 11

What is a requirement to set up a supported VxRail Stretched Cluster?

- A. VxRail nodes with 10 GbE
- B. Identical VxRail nodes
- C. All-Flash configuration
- D. G560 with one chassis

Answer: A ([LEAVE A REPLY](#))

NEW QUESTION: 12

What is the base URL for the VxRail API call?

- A. https://<VxM_IP>/rest/vxm/v1/
- B. https://<VCenter_IP>/rest/vxm/v1/
- C. http://<VxM_IP>/vxm/v1/
- D. https://<VxM_IP>/API/vxm/v1/

Answer: A ([LEAVE A REPLY](#))

NEW QUESTION: 13

A Dell EMC solutions architect has updated the VxRail PEQ with Customer Top-of-Rack (ToR) switch details.

On which worksheet would they need to be to generate a new NVT JSON file?

- A. Networking Details
- B. Engagement Details
- C. VxRail Cluster

D. Customer

Answer: C (LEAVE A REPLY)

NEW QUESTION: 14

A company wants to deploy VxRail on V Series nodes as a proof-of-concept (POC). Only one Top of Rack (ToR) switch has been provided for the POC.

What is the Dell EMC best practice recommendation in this situation?

- A. Inform the company that the POC cannot proceed without a second ToR switch.
- B. Connect the first host NIC to the TOR switch. Daisy chain the second NIC between hosts.
- C. Connect each host NIC to a port on a different switch packet buffer bank on the ToR switch. Balance the ports across two packet buffer banks.
- D. Connect the first host NIC to the ToR switch. Leave the second host NIC un-cabled.

Answer: C (LEAVE A REPLY)

NEW QUESTION: 15

Which VxRail Pre-Installation Site Checklist worksheet is auto-populated?

- A. Switch Config Actuals
- B. Begin Here
- C. VxRail Network Configuration
- D. Network Basics

Answer: D (LEAVE A REPLY)

NEW QUESTION: 16

A VxRail cluster is being deployed with an external vCenter Server.

What role needs to be assigned to the new VxRail Management User account within vCenter?

- A. Trusted Infrastructure Administrator
- B. Administrator
- C. No specific role
- D. Read-only

Answer: C (LEAVE A REPLY)

Valid D-VXR-DY-01 Dumps shared by Actual4test.com for Helping Passing D-VXR-DY-01 Exam! Actual4test.com now offer the **newest D-VXR-DY-01 exam dumps**, the Actual4test.com D-VXR-DY-01 exam **questions have been updated** and **answers have been corrected** get the **newest** Actual4test.com D-VXR-DY-01 dumps with Test Engine here: https://www.actual4test.com/D-VXR-DY-01_examcollection.html (345 Q&As Dumps, **30%OFF** Special Discount: **Freepdfdumps**)

NEW QUESTION: 17

A customer requires a VxRail Stretched Cluster with E560F nodes in its minimal configuration. In addition, the cluster should be able to use both erasure coding options.

Which setup fulfills the requirement?

- A. 8+8 nodes
- B. 6+6 nodes
- C. 3+3 nodes
- D. 4+4 nodes

Answer: C ([LEAVE A REPLY](#))

NEW QUESTION: 18

How many cables are required to install a 4 node VxRail Model G410 cluster with 1 GbE into a rack?

- A. 4 CAT6 and 16 Twinax network cables
- B. 4 CAT6 and 8 Twinax network cables
- C. 20 CAT6 network cables
- D. 4 CAT6 and 32 SFP+ connectors, and 16 fiber cables

Answer: C ([LEAVE A REPLY](#))

NEW QUESTION: 19

In a 24 node Stretched Cluster VxRail deployment, what is the acceptable Rout Trip Time (RTT) latency between sites?

- A. Primary to witness site RTT latency: 75 ms
Secondary to witness site RTT latency: 75 ms
Primary to secondary site RTT latency: 1 ms
- B. Primary to witness site RTT latency: 75 ms
Secondary to witness site RTT latency: 150 ms
Primary to secondary site RTT latency: 5 ms
- C. Primary to witness site RTT latency: 10 ms
Secondary to witness site RTT latency: 10 ms
Primary to secondary site RTT latency: 10 ms
- D. Primary to witness site RTT latency: 50 ms
Secondary to witness site RTT latency: 50 ms
Primary to secondary site RTT latency: 6 ms

Answer: A ([LEAVE A REPLY](#))

NEW QUESTION: 20

When using VxRail Manager, what is the source of information that can help validate good VxRail system post-deployment status?

- A. Last Heartbeat, Last Configuration Sent, Network Environment Settings, Cluster Monitor
- B. System Diagnostic, Events, Health Logical View, Health Physical View, Log Bundle
- C. MARVIN-Virtual-SAN-Cluster > Monitor > Virtual SAN > Health

D. MARVIN-Virtual-SAN-Cluster > Manage > Health and Performance

Answer: B ([LEAVE A REPLY](#))

NEW QUESTION: 21

Which step of the VxRail Initialization wizard may time out if the user does not proceed to the next step within 20 minutes?

- A. Review expected nodes list
- B. Build complete screen
- C. Review and validate
- D. Configuration of the VxRail Manager IP address

Answer: C ([LEAVE A REPLY](#))

NEW QUESTION: 22

What is a benefit of programmatically gathering VxRail information with a REST API call?

- A. Perform node shutdowns and specific operations
- B. Automate iDRAC firmware management and status
- C. Perform Day 2 vSAN configuration changes
- D. Obtain status of all running operations on a cluster

Answer: D ([LEAVE A REPLY](#))

NEW QUESTION: 23

In addition to the VxRail YouTube video, links to what resources should the SE send to the customer, according to the VxRail PEQ Engagement Details worksheet?

- A. VxRail vCenter Server Planning Guide Network Validation Tool
- B. VxRail QuickStart Guide VxRail Network Guide
- C. VxRail QuickStart Guide Network Validation Tool
- D. VxRail vCenter Server Planning Guide VxRail Network Guide

Answer: ([SHOW ANSWER](#))

NEW QUESTION: 24

A VxRail cluster is being installed with Dell ToR switches at a "dark site." The administrator is not able to use the NVT tool.

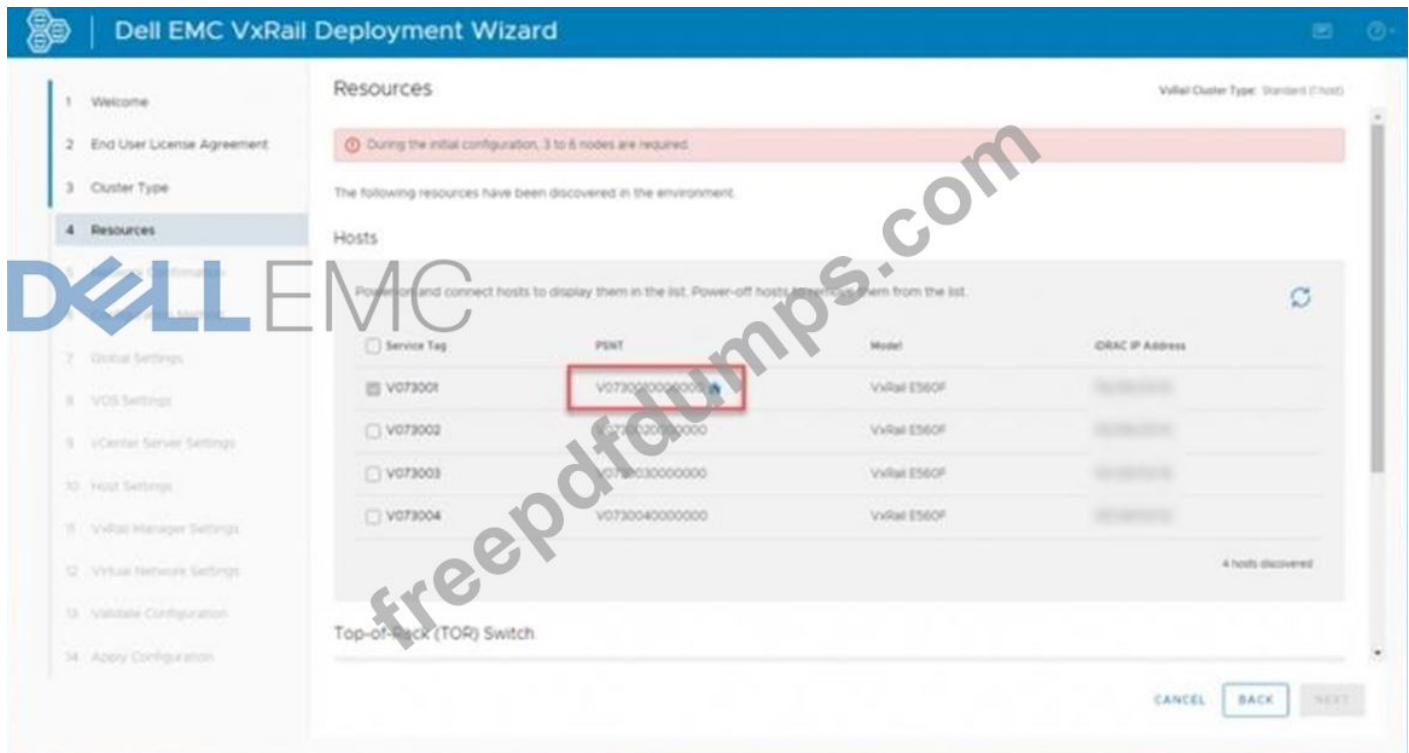
Which command can they run on the ToR to verify VLANs are created, active, and properly configured on the uplink ports?

- A. show interface status
- B. ping default gateway
- C. show vlan
- D. show port-channel summary

Answer: C ([LEAVE A REPLY](#))

NEW QUESTION: 25

Refer to the Exhibit which shows a red box around a node PSNT.



What is a characteristic of the node marked by the red box?

- A. VxRail Primary node hosting the VxRail Manager VM.
- B. VxRail node hosting the DNS server.
- C. VxRail Primary node hosting the NTP and DNS servers.
- D. VxRail node that can be excluded from the initial VxRail build.

Answer: (SHOW ANSWER)

NEW QUESTION: 26

An existing Dell EMC customer wants to deploy a new VxRail cluster on premise. Each node of the new cluster will be configured with a single disk group containing one 1.6 TB Flash drive for the capacity tier. The customer plans on using mirroring and needs to have at least 2 TB of usable capacity in the vSAN datastore.

What is the minimum number of VxRail nodes required?

- A. 5
- B. 3
- C. 2
- D. 4

Answer: C (LEAVE A REPLY)

NEW QUESTION: 27

You are performing a troubleshooting steps on a 4 node VxRail cluster. The cluster uses Erasure Coding for all VMs. When you attempt to put a node into maintenance mode using the recommended vSAN data migration policy, the operation fails.

What could be done to successfully put the node into maintenance mode?

- A. Use the 'No Data Migration' option
- B. Use the 'Full Data Migration' option
- C. Storage vMotion the VMs off the node
- D. Cold migrate the VMs off the node

Answer: ([SHOW ANSWER](#))

NEW QUESTION: 28

A company intends to deploy VxRail for their heavy database workloads. Which type of VxRail nodes should be recommended?

- A. P Series
- B. E Series
- C. S Series
- D. V Series

Answer: A ([LEAVE A REPLY](#))

NEW QUESTION: 29

Which command can be used from VxRail Manager VM to restart the loudmouth daemon?

- A. /etc/init.d/loudmouth restart
- B. /etc/init.d/vmware-loudmouth restart
- C. systemctl restart loudmouth
- D. systemctl restart vmware-loudmouth

Answer: ([SHOW ANSWER](#))

NEW QUESTION: 30

To investigate a problem on a VxRail system, the onsite engineer has to collect the complete set of logs.

Which method will collect all logs at once?

- A. Click "Generate New Log Bundle" in the VxRail Manager GUI
- B. Run /mystic/generateFullLogBundle command in VxRail Manager CLI
- C. Export vCenter system logs
- D. Download https://:443/appliance /support-bundle

Answer: C ([LEAVE A REPLY](#))

NEW QUESTION: 31

What is the basis used for VMware vSAN licensing?

- A. TB capacity per cluster
- B. TB capacity per node
- C. Per disk group
- D. Per CPU socket

Answer: ([SHOW ANSWER](#))

Valid D-VXR-DY-01 Dumps shared by Actual4test.com for Helping Passing D-VXR-DY-01 Exam! Actual4test.com now offer the **newest D-VXR-DY-01 exam dumps**, the Actual4test.com D-VXR-DY-01 exam **questions have been updated** and **answers have been corrected** get the **newest** Actual4test.com D-VXR-DY-01 dumps with Test Engine here: https://www.actual4test.com/D-VXR-DY-01_examcollection.html (345 Q&As Dumps, **30%OFF** Special Discount: **Freepdfdumps**)

NEW QUESTION: 32

What is required to perform an Internet upgrade of a VxRail cluster?

- A. Download Composite Upgrade Metadata .zip files
- B. Enable vSphere Lifecycle Manager
- C. Dell Technologies Support Account
- D. Dell Secure Remote Services

Answer: C (LEAVE A REPLY)

NEW QUESTION: 33

What does the VxRail NVT validate on ToR switches?

- A. IP address conflicts and SRS accessibility
- B. NTP and DNS settings
- C. VLAN and STP configurations
- D. VLAN and LACP configurations

Answer: C (LEAVE A REPLY)

NEW QUESTION: 34

What is the maximum number of nodes in a VxRail cluster when using 1 GbE links?

- A. 4
- B. 32
- C. 8
- D. 16

Answer: C (LEAVE A REPLY)

NEW QUESTION: 35

You want to deploy VxRail, leveraging your existing VMware SSO domain.

What is the recommended method?

- A. Deploy to an External vCenter
- B. Configure Embedded vCenter in Enhanced Linked Mode
- C. Deploy External vCenter with no PSC
- D. Deploy Embedded vCenter with Embedded PSC

Answer: (SHOW ANSWER)

NEW QUESTION: 36

A planned VxRail Stretched Cluster will have four All-Flash nodes at each site

What is the recommended storage policy to ensure cross-site and local protection, using storage as efficiently as possible?

- A. Site disaster tolerance - Dual site mirroring (stretched cluster) Failures to tolerate - 1 failure - RAID-5 (Erasure Coding)
- B. Site disaster tolerance - Dual site mirroring (stretched cluster) Failures to tolerate - no data redundancy
- C. Site disaster tolerance - Dual site mirroring (stretched cluster) Failures to tolerate - 1 failure - RAID-1 (Mirroring)
- D. Site disaster tolerance - None - keep data on Preferred (stretched cluster) Failures to tolerate - 1 failure - RAID-5 (Erasure Coding)

Answer: A ([LEAVE A REPLY](#))

NEW QUESTION: 37

What is the default VLAN that is configured on the nodes and is used for device discovery during initial implementation and node expansion?

- A. 1812
- B. 0
- C. 3939
- D. 1814

Answer: C ([LEAVE A REPLY](#))

NEW QUESTION: 38

What is a benefit of using the VxRail REST API?

- A. Automated security audit of VxRail clusters
- B. Automated log collection for VxRail clusters
- C. Remote upgrades of iDRAC related software only
- D. Polling for vSAN performance statistics

Answer: B ([LEAVE A REPLY](#))

NEW QUESTION: 39

What is the name of the default port group with VLAN ID 3939 on an unconfigured VxRail node?

- A. Private Discovery Network
- B. Discovery Network
- C. Private Management Network
- D. Management Network

Answer: ([SHOW ANSWER](#))

NEW QUESTION: 40

A planned VxRail deployment will use an external vCenter Server and syslog server. Which ping connectivity tests should succeed and which should fail before the deployment?

- A. Succeed: vCenter server and syslog server
Fail: VxRail Manager and ESXi hosts
- B. Succeed: VxRail Manager and ESXi hosts
Fail: vCenter server and syslog server
- C. Succeed: VxRail Manager and syslog server
Fail: vCenter server and ESXi hosts
- D. Succeed: ESXi hosts and syslog server
Fail: VxRail Manager and vCenter server

Answer: A,C (LEAVE A REPLY)

NEW QUESTION: 41

What is a supported method for racking nodes for a new VxRail deployment?

- A. With server exhaust facing the cold aisle
- B. Starting with node 1 at the top of the rack
- C. With PDUs connected to 120v single phase 5-amp electrical circuits
- D. In the rack hosting the network equipment used to manage the iDRAC

Answer: B (LEAVE A REPLY)

NEW QUESTION: 42

Match each VxRail API request with the information to be retrieved.

<u>Request:</u>	<u>Information Retrieved:</u>
get/v1/vc/mode	Latest Day 1 workflow
get/v1/system/initialize/status	VxRail system information
get/v2/system	Current vCenter mode and PSC modes
get/v1/system	vxm system information

Answer:

Request:

Information Retrieved:

get/v1/vc/mode	get/v2/system
get/v1/system/initialize/status	get/v1/vc/mode
get/v2/system	get/v1/system
get/v1/system	get/v1/system/initialize/status

NEW QUESTION: 43

A company has chosen to deploy an external vCenter/PSC. They would like to use the bundled vCenter license that comes with VxRail.

What is the correct procedure to do this?

- A. Log into VxRail Manager through SSH and extract the vCenter license key from the application properties file. Next, license the newly created vCenter.
- B. Contact EMC Licensing to have a replacement vCenter license generated.
- C. Bundled vCenter license is only valid when vCenter is internally deployed. The company must provide their own vCenter license.
- D. Contact VMware Licensing to have a replacement vCenter license generated.

Answer: D (LEAVE A REPLY)

NEW QUESTION: 44

During a VxRail deployment validation check it is discovered that the Top of Rack (ToR) switches have Spanning Tree Protocol enabled.

What should be done before the implementation can proceed?

- A. Disable STP on the ToR switches
- B. Confirm that isolated VLANs exist on the ToR switches for each of the VxRail networks.
- C. Confirm that ToR switch ports connected to VxRail nodes are configured to get into "forwarding" mode quickly.
- D. Confirm that ToR switch ports connected to VxRail nodes have fabric-trunk enabled.

Answer: C (LEAVE A REPLY)

NEW QUESTION: 45

What is a valid 2-node VxRail cluster in a direct-connect configuration?

- A. D Series with 4x 25 GbE and internal vCenter
- B. G Series with 4x 10 GbE and external vCenter
- C. P Series with 2x 1 GbE and 2x 10 GbE and internal vCenter
- D. E Series with 2x 1 GbE and 2x 10 GbE and external vCenter

Answer: D ([LEAVE A REPLY](#))

NEW QUESTION: 46

A customer is configuring VxRail to connect to an existing, external SRS VE. Their support account is associated with the Site ID/Party ID where VxRail is installed. A validation error is issued when the customer attempts to register VxRail in SRS.

What is the possible cause for the error?

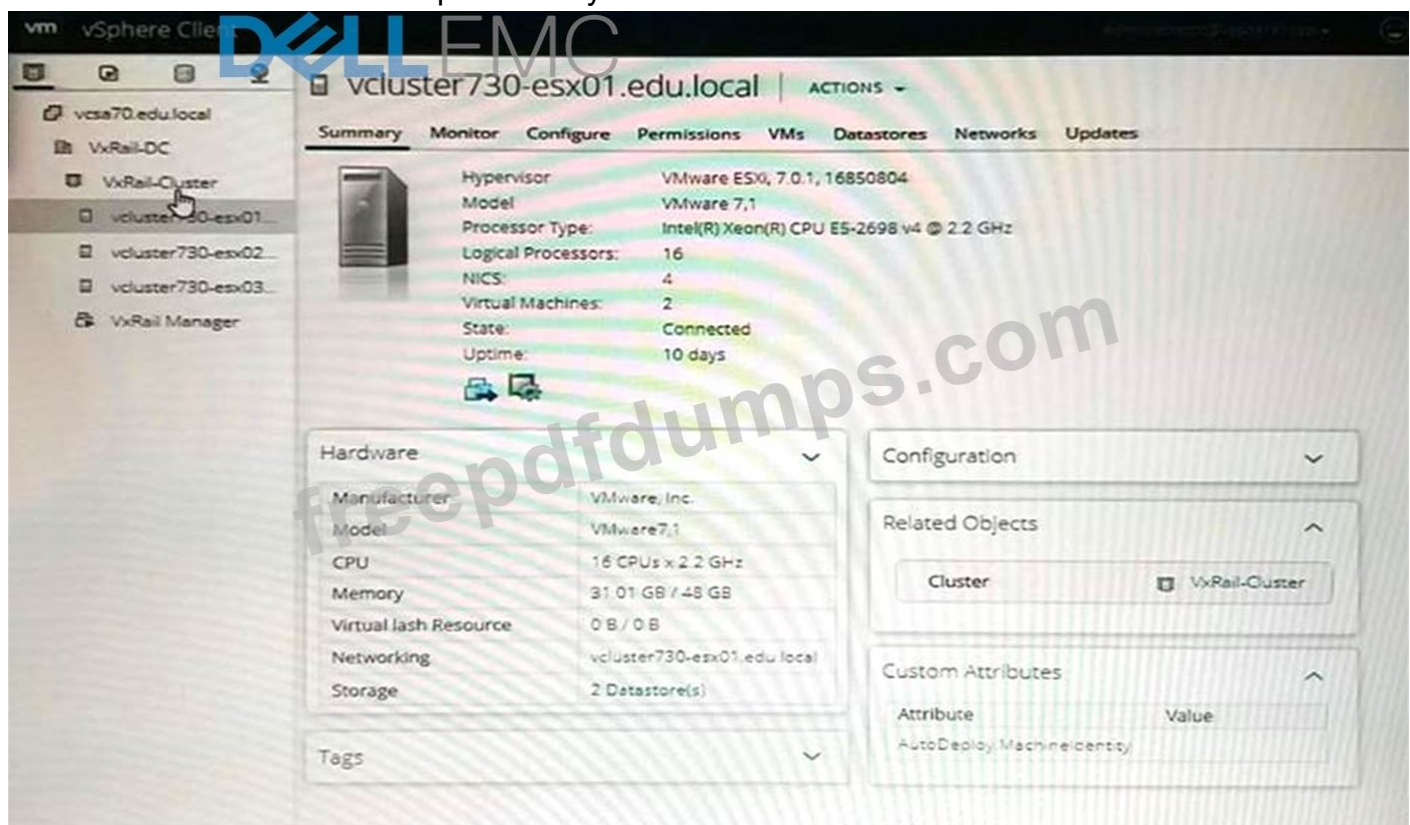
- A. Number of deployed devices on SRS gateway has exceeded the maximum
- B. SRS traffic goes through a proxy server
- C. Status of VxRail in Install Base is 'Shipped'
- D. Wrong IP address was used for SRS VE gateway

Answer: C ([LEAVE A REPLY](#))

Valid D-VXR-DY-01 Dumps shared by Actual4test.com for Helping Passing D-VXR-DY-01 Exam! Actual4test.com now offer the **newest D-VXR-DY-01 exam dumps**, the Actual4test.com D-VXR-DY-01 exam **questions have been updated** and **answers have been corrected** get the **newest** Actual4test.com D-VXR-DY-01 dumps with Test Engine here: https://www.actual4test.com/D-VXR-DY-01_examcollection.html (345 Q&As Dumps, **30%OFF** Special Discount: **Freepdfdumps**)

NEW QUESTION: 47

Use the VxRail simulator to explore the system.



vsphere Client

vcsa70.edu.local | ACTIONS

Summary Monitor Configure Permissions Datacenters Hosts & Clusters VMs Datastores Networks

VxRail-DC

VxRail-Cluster

vcluster730-esx01...

vcluster730-esx02...

vcluster730-esx03...

VxRail Manager

Version: 7.0.1
Build: 17005016
Last Updated: Nov 24, 2020, 7:04 AM
Last File-Based Backup: Not scheduled

Clusters: 1
Hosts: 3
Virtual Machines: 4

Custom Attributes

Tags

Health Status

Overall Health ✔ Good

APPLIANCE MANAGEMENT

Center HA

vm vSphere Client

vcsa70.edu.local | ACTIONS

Summary Monitor Configure Permissions Hosts & Clusters VMs Datastores Networks Updates

VxRail-DC

VxRail-Cluster

vcluster730-esx01...

vcluster730-esx02...

vcluster730-esx03...

VxRail Manager

Hosts: 3
Virtual Machines: 4
Clusters: 1
Networks: 7
Datastores: 4

Custom Attributes

Tags

vsphere Client

vcsa70.edu.local | ACTIONS

Summary Monitor Configure Permissions Hosts VMs Datastores Networks Updates

VxRail-Cluster

VxRail-DC

vcluster730-esx01...

vcluster730-esx02...

vcluster730-esx03...

VxRail Manager

Total Processors: 48
Total vMotion Migrations: 0
Fault Domains: 3

Related Objects

Datacenter: VxRail-DC

vSphere HA

Protected

CPU reserved for failover: 25%
Memory reserved for failover: 25%
Proactive HA: Disabled
Host Monitoring: Enabled
VM Monitoring: Disabled

vSphere DRS

Cluster Consumers

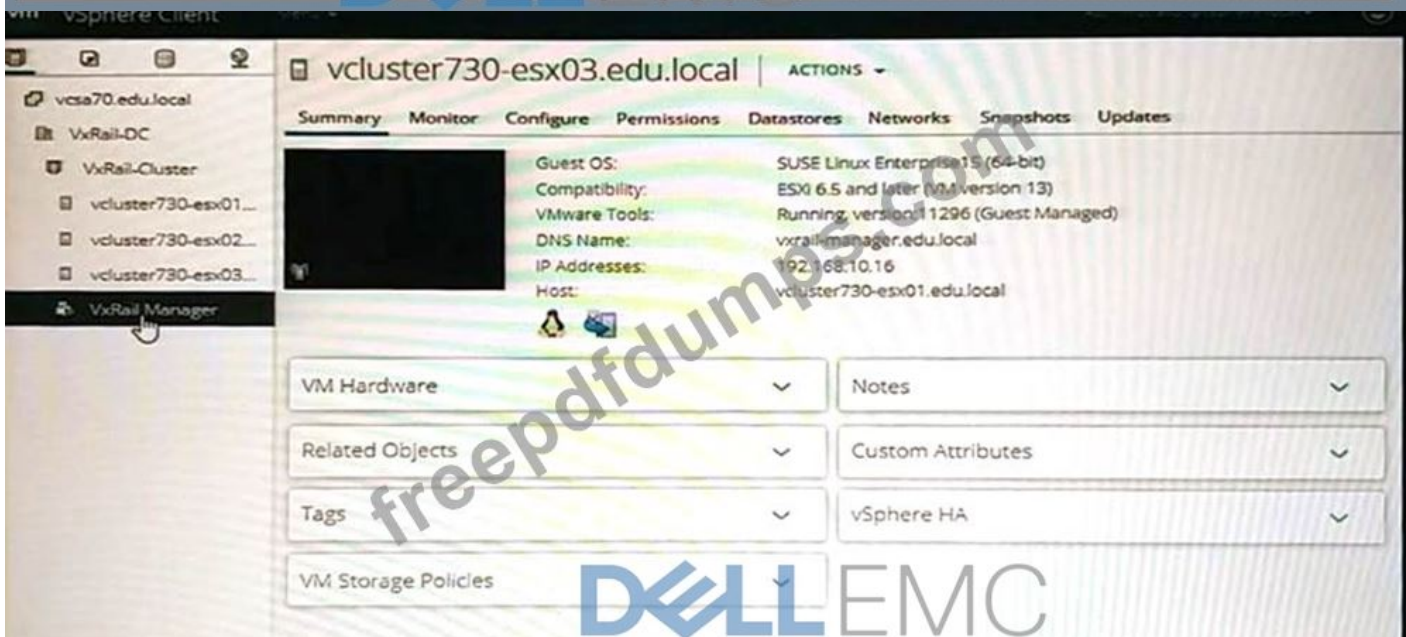
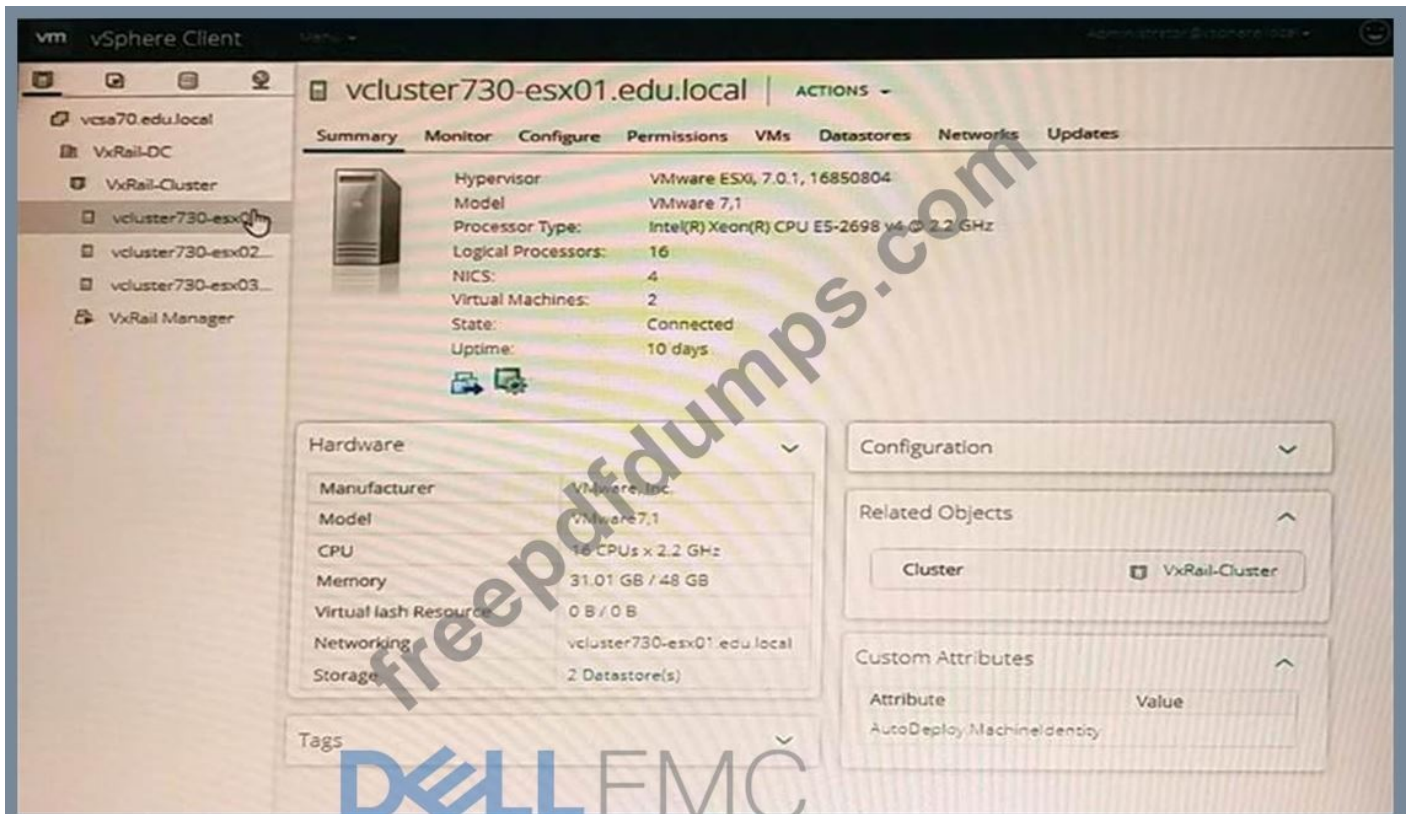
Tags

Cluster Resources

Custom Attributes

Attribute	Value
VxRail-Cluster-Tag	STANDARD
VxRail-IP	192.168.10.16
VxRail-SSL-THUMBPRINT	79:B6:6B:E3:5F:00:25...
VxRail-VERSION	7.0.100

com.vmware.vcenter.clu...



What is the presented configuration? Note: It is necessary to close (x) the simulator window before you can select a response to this question.

- A. Internal vCenter and external DNS
- B. External vCenter and external DNS
- C. Internal vCenter and Internal DNS
- D. External vCenter and internal DNS

Answer: (SHOW ANSWER)

NEW QUESTION: 48

What is the minimum number of VxRail hosts required if FTT = 1 and FTM is set to Erasure Coding?

- A. 6
- B. 3
- C. 4
- D. 5

Answer: C ([LEAVE A REPLY](#))

NEW QUESTION: 49

For which VxRail model must the iDRAC NIC Selection be set to LOM1?

- A. G Series
- B. S Series
- C. D Series
- D. E Series

Answer: A ([LEAVE A REPLY](#))

NEW QUESTION: 50

A company has recently implemented a popular data center monitoring and reporting software solution. They plan to use the solution to consolidate reporting into a single platform.

What is an expected benefit of programmatically gathering VxRail information?

- A. Automate iDRAC firmware management and status
- B. Perform pre-checks for vSAN health
- C. Perform node shutdowns and specific operations
- D. Obtain status of all running operations on a cluster

Answer: D ([LEAVE A REPLY](#))

NEW QUESTION: 51

A customer is deploying a VxRail cluster in their datacenter and will be deploying other VxRail clusters in the coming months.

Which vCenter deployment option will be excluded from the VxRail Lifecycle software updates?

- A. Existing VxRail-managed vCenter Server
- B. Existing Customer-supplied vCenter Server
- C. Internal VxRail-managed vCenter Server

Answer: B ([LEAVE A REPLY](#))

NEW QUESTION: 52

Match each component of the VxRail HCI System Software to its description.

Software Component	Description
Local Cluster Management	Uses a database and a message queue to facilitate the necessary sequence of transactions for automation and orchestration of processes
Backend and Downstream APIs	Provides communication to the components that make up a vSAN cluster
SmartFabric Services	Provides automated network provisioning capabilities to the VxRail management platform
Upstream APIs	Built to provide simplified management experience and the services are exposed using REST APIs for SDDC solutions
VMware Connectors	Provides a subset of the capabilities such as Lifecycle Management and Cluster Operations services

Answer:

Software Component	Description
Local Cluster Management	Upstream APIs
Backend and Downstream APIs	Local Cluster Management
SmartFabric Services	SmartFabric Services
Upstream APIs	Backend and Downstream APIs
VMware Connectors	VMware Connectors

NEW QUESTION: 53

What is the purpose of the As-Built Configuration Generator?

- A. Capture and generate the installation workflow for review in the event of a failed deployment
- B. Provide advanced control grouping for Stretched Clusters
- C. Keep a record of all spare nodes, not yet added to a VxRail Cluster
- D. Create the customer deliverable documentation of the Dell EMC product/solution implementation

Answer: D ([LEAVE A REPLY](#))

NEW QUESTION: 54

A VxRail cluster is being deployed with the VxRail Deployment Wizard.

For which IP addresses must FQDNs be resolved by DNS?

- A. All VxRail ESXi nodes, vCenter Server, and VxRail Manager VM
- B. All VxRail ESXi nodes, vRealize Operation Manager, and VxRail Manager VM
- C. Only the first VxRail ESXi node, vCenter Server, and VxRail Manager VM
- D. vCenter Server and VxRail Manager VM only

Answer: ([SHOW ANSWER](#))

NEW QUESTION: 55

After finishing the rack and stack of a VxRail Model G410 cluster, in which sequence should the nodes be powered on?

- A. Reverse order (4 - 1)
- B. Any order possible
- C. All four at the same time
- D. Forward order (1 - 4)

Answer: ([SHOW ANSWER](#))

NEW QUESTION: 56

A system administrator wants to collect a generated log file via the VxRail REST API.

Which command should they use?

- A. GET /v1/support/logs/<Log_ID>
- B. POST /v1/support/logs/<Log_ID>/download
- C. GET /v1/support/logs/<Log_ID>/download
- D. POST /v1/support/logs/

Answer: C ([LEAVE A REPLY](#))

NEW QUESTION: 57

What is the complete list of menu option choices available in the RASR factory reset procedure when booting from the RASR ISO?

- A. - RASR RESET
- CREATE RASRUSB
- FACTORY RESET
- REBOOT
- UPDATE FIRMWARE
- EXIT
- B. - RASR RESET
- CREATE RASRUSB
- FACTORY RESET
- QUIT
- C. - RASR RESET
- CREATE RASRUSB

- FACTORY RESET
- UPDATE FIRMWARE
- EXIT

- D.** - RASR RESET
- CREATE RASRUSB
 - FACTORY RESET
 - REBOOT
 - UPDATE FIRMWARE
 - QUIT

Answer: B ([LEAVE A REPLY](#))

NEW QUESTION: 58

View the Exhibit.



Based on the exhibit, which interfaces should be used to reset the node through the Mobile Build Server?

- A.** 1, 2 and 3
- B.** 1 and 3
- C.** 2 and 3
- D.** 1 and 2

Answer: ([SHOW ANSWER](#)**)**

NEW QUESTION: 59

In which three VxRail Configuration Portal locations can an implementation engineer download the cluster configuration file? (Select 3)

- A.** From the My Clusters Tab in the VxRail Configuration Portal
- B.** From the My Deployments tab in the VxRail Configuration Portal
- C.** From the Validate Configuration File tab when editing a cluster
- D.** From the Resources tab in the Edit Cluster Configuration wizard
- E.** From the customer Dell Digital Locker website

Answer: A,B,C ([LEAVE A REPLY](#))

NEW QUESTION: 60

What output logs are collected using the vc-support.sh script?

- A.** ESXi log bundle

- B. VxRail Manager log bundle
- C. vRealize Log Insight support bundle
- D. vCenter log bundle

Answer: A ([LEAVE A REPLY](#))

NEW QUESTION: 61

A company has a simple, 4 node VxRail cluster. The VxRail is running version 3.5 and utilizes a vSphere standard license. The company has asked for a VxRail software upgrade.

What are the steps for the upgrade?

- A. Log in to VxRail Manager, select "Internet Upgrade", then follow the prompts.
- B. Place all four nodes into maintenance mode.
- C. Contact Dell EMC support to request the upgrade to the VxRail cluster.
- D. Log in to support.emc.com and download the upgrade packages.

Answer: D ([LEAVE A REPLY](#))

Valid D-VXR-DY-01 Dumps shared by Actual4test.com for Helping Passing D-VXR-DY-01 Exam! Actual4test.com now offer the **newest D-VXR-DY-01 exam dumps**, the Actual4test.com D-VXR-DY-01 exam **questions have been updated** and **answers have been corrected** get the **newest** Actual4test.com D-VXR-DY-01 dumps with Test Engine here: https://www.actual4test.com/D-VXR-DY-01_examcollection.html (345 Q&As Dumps, **30%OFF** Special Discount: **Freepdfdumps**)

NEW QUESTION: 62

Which model of VxRail node supports the lowest number of disk groups?

- A. E Series
- B. P Series
- C. G Series
- D. S Series

Answer: ([SHOW ANSWER](#))

NEW QUESTION: 63

An implementation engineer has just finished connecting a multi-rack VxRail cluster over a Layer 3 network. When attempting to migrate System VMs from the first rack to the second rack, they receive an error.

What is a possible reason for the error?

- A. System VMs must be on the same subnet
- B. System VMs must be on different subnets
- C. Only Layer 2 networking is supported
- D. vSphere DRS must be enabled

Answer: A ([LEAVE A REPLY](#))

NEW QUESTION: 64

What is the correct Use Case for using VxRail-Managed vCenter Server?

- A. A stand-alone cluster deployment or the first cluster in a multi-cluster deployment.
- B. When you have a multi-site Stretch Cluster and no witness.
- C. Second or subsequent cluster deployments or the first cluster in a multi-cluster deployment.

Answer: A ([LEAVE A REPLY](#))

NEW QUESTION: 65

An S Series VxRail cluster has just been deployed. When attempting to enable compression, the option is grayed out.

What is the cause of this situation?

- A. Compression is not supported on the S Series
- B. "Add disks to storage" is set to automatic
- C. Erasure Coding is not enabled
- D. Erasure Coding is not disabled

Answer: B ([LEAVE A REPLY](#))

NEW QUESTION: 66

A company has gradually expanded their VxRail environment over a period of years. They now need to update all the VxRail systems to the same code level. However, the company is concerned about the cost.

How could the company benefit by using VxRail REST API in the upgrade?

- A. Report system statistics, heartbeat, and available node information
- B. Enable automating of upgrade operations of one or more VxRail systems
- C. Report status of all running processes on a cluster or the status of a specific process
- D. Create iDRAC logs, database logs, and downloads log extracts

Answer: B ([LEAVE A REPLY](#))

NEW QUESTION: 67

In a VxRail Stretched Cluster built from eight all-flash nodes, what should be the recommended storage policy to ensure the highest possible protection?

- A. Raid-5/6(Erasure Coding) FTT=2
- B. Raid-1(Mirroring) FTT=1
- C. Raid-1(Mirroring) FTT=2
- D. Raid-5/6(Erasure Coding) FTT=1

Answer: D ([LEAVE A REPLY](#))

NEW QUESTION: 68

A VxRail cluster 4.7.xxx environment is managed by the internal vCenter Server. An implementation engineer plans to deploy a new VxRail cluster using the existing vCenter Server instance, then use the customer-supplied VDS to manage both VxRail clusters.

What must be done?

- A. Migrate the internal vCenter Server to an external vCenter Server, then merge the PSC
- B. Migrate the internal vCenter Server to an external vCenter Server, then upgrade the VxRail 4.7.xxx to 7.0.100
- C. Upgrade the internal vCenter Server to version 7.0
- D. Upgrade the VxRail version from 4.7.xxx to 7.0.000

Answer: B ([LEAVE A REPLY](#))

NEW QUESTION: 69

What is a requirement for the Top of Rack (ToR) switches used in a VxRail implementation?

- A. MLD Querier
- B. IPV4 and IPV6 Multicast
- C. EtherChannel
- D. LACP

Answer: ([SHOW ANSWER](#))

NEW QUESTION: 70

Which VxRail configurations can be reviewed using the As-Built Configuration Report at the time the report is generated?

- A. Node models, license keys, vSAN VLAN ID, and vMotion VLAN ID
- B. Node PSNT numbers, license activation dates, and Private Management Network VLAN ID
- C. Node names, vSAN interface IP addresses, and VxRail Manager users and passwords
- D. vMotion interface IP addresses, vCenter users and passwords, and opened firewall ports

Answer: A ([LEAVE A REPLY](#))

NEW QUESTION: 71

Which vSAN setting is enabled by default during the initial deployment of a VxRail cluster?

- A. Encryption
- B. Storage policy of FTT = 1
- C. Performance Service
- D. Deduplication and Compression

Answer: D ([LEAVE A REPLY](#))

NEW QUESTION: 72

Once a VxRail cluster has been acquired, what is the correct sequence of steps to deploy it?

Configure the cluster	Step 1
Conduct project kick-off meeting	Step 2
Validate customer readiness	Step 3
Gather and document customer configuration requirements	Step 4
Install VxRail hardware	Step 5

Answer:

Configure the cluster	Install VxRail hardware
Conduct project kick-off meeting	Configure the cluster
Validate customer readiness	Validate customer readiness
Gather and document customer configuration requirements	Validate customer readiness
Install VxRail hardware	Gather and document customer configuration requirements

NEW QUESTION: 73

Which vSAN feature requires an All-Flash cluster?

- A. Deduplication and compression
- B. Storage Policy Based Management
- C. Data-at-Rest Encryption
- D. Data-in-Transit Encryption

Answer: A (LEAVE A REPLY)

NEW QUESTION: 74

During VxRail initial deployment the build fails. Support requests that logs be downloaded manually.

Which logs should be collected?

- A. All files and folders under /var/log/vmware

- B. /var/log/vmware/marvin/tomcat/logs/marvin.log only
- C. /var/log/vmware-installer
- D. /var/log/mystic/web.log

Answer: D ([LEAVE A REPLY](#))

NEW QUESTION: 75

Which options can be checked by the Network Validation Tool for VxRail?

- A. ToR Switches, Upstream Switches, and Storage Networks
- B. Network Services, ToR Switches, and Upstream Switches
- C. Network Services, Upstream Switches, and Storage Networks
- D. Network Services, ToR Switches, and Storage Networks

Answer: B ([LEAVE A REPLY](#))

NEW QUESTION: 76

How should an administrator manually validate the DNS readiness of a customer network?

- A. Run a traceroute to the DNS server
- B. Generate a Network PEQ
- C. Ping the default gateway of the management VLAN
- D. Run nslookup on server FQDN and IP

Answer: D ([LEAVE A REPLY](#))

Valid D-VXR-DY-01 Dumps shared by Actual4test.com for Helping Passing D-VXR-DY-01 Exam! Actual4test.com now offer the **newest D-VXR-DY-01 exam dumps**, the Actual4test.com D-VXR-DY-01 exam **questions have been updated** and **answers have been corrected** get the **newest** Actual4test.com D-VXR-DY-01 dumps with Test Engine here: https://www.actual4test.com/D-VXR-DY-01_examcollection.html (345 Q&As Dumps, **30%OFF** Special Discount: **Freepdfdumps**)

NEW QUESTION: 77

According to the VxRail PEQ Engagement Details worksheet, links to what resources should the SE send to the customer?

- A. VxRail QuickStart Guide
VxRail Network Planning Guide
- B. VxRail vCenter Server Planning Guide
Network Validation Tool
- C. VxRail QuickStart Guide
Network Validation Tool
- D. VxRail vCenter Server Planning Guide
VxRail Network Planning Guide

Answer: C ([LEAVE A REPLY](#))

NEW QUESTION: 78

Which requirement is optional for a VxRail Stretched Cluster?

- A. Cross-site layer-2 connectivity
- B. Enterprise Plus vSphere Licensing
- C. External vCenter
- D. IPv6 Multicast between locations

Answer: D ([LEAVE A REPLY](#))

NEW QUESTION: 79

You have been asked to deploy a single, 4 node VxRail cluster for company. They would like to migrate from their existing vSphere 6.5 environment. They have also asked that vCenter Enhanced linked-mode be supported.

Based on best practice, what is the recommended deployment model?

- A. Use existing vCenter 6.5 with Embedded PSC
- B. Deploy Internal vCenter with External PSC
- C. Deploy Internal vCenter with Embedded PSC
- D. Use existing vCenter 6.5 with External PSC

Answer: C ([LEAVE A REPLY](#))

NEW QUESTION: 80

What is a permissible configuration when performing a cluster expansion?

- A. New nodes should be on a different subnet prior to deployment.
- B. Mixing of AMD-based nodes and Intel-based nodes.
- C. Use 25 GbE for VMNetwork, 10 GbE for VSAN, and 1 GbE for Management.
- D. Mixing of all-flash and all-NVMe nodes in a cluster.

Answer: D ([LEAVE A REPLY](#))

NEW QUESTION: 81

A VxRail running version 4.7.100 has been deployed in a SmartFabric configuration. The customer needs to set up management of their networking for the Cluster.

What steps are required to complete this task?

- A. Download and install the OMNI plug-in
- B. Download the OMNI plug-in, enable vCenter, and run the Python script
- C. Download and install OME plug-in
- D. Download, install the OME plug-in, and run the Python script

Answer: A ([LEAVE A REPLY](#))

NEW QUESTION: 82

Which requirement must be met when expanding a 3-node VxRail G560F cluster with a fourth G Series node in the same chassis?

- A. New node must be at the same VxRail version as existing nodes
- B. Node requires only the same drive configuration
- C. PCIe network card must be added to all nodes
- D. Node hardware must be identical to the other three nodes

Answer: ([SHOW ANSWER](#))

NEW QUESTION: 83

When installing VxRail hardware and configuring iDRAC settings, which methods can be used per SolVe documentation?

- A. Using Lifecycle controller interface
DB9 to USB cable to configure
- B. Press F2 on post, use System setup
DB9 to USB cable to configure
- C. Press F10 on post, use System setup
Use Lifecycle controller interface
- D. Using System Setup during Post
Micro USB Direct connection to node

Answer: D ([LEAVE A REPLY](#))

NEW QUESTION: 84

You have been asked to install a 7 node VxRail single socket 1 GbE G Series cluster. The company has requested remote KVM support.

How many RJ45 cables will be required?

- A. 35
- B. 21
- C. 28
- D. 14

Answer: C ([LEAVE A REPLY](#))

NEW QUESTION: 85

From what location should NVT for VxRail be run?

- A. Jump server on a different network
- B. Laptop connected to the first VxRail ESXi node
- C. VxRail network Top of Rack switch
- D. Workstation on the same network as VxRail Manager

Answer: D ([LEAVE A REPLY](#))

NEW QUESTION: 86

Refer to the exhibit.

1 System Details			
Hardware Configuration		IP Parameters	
VxRail Version :	4.7	DNS Servers :	172.21.10.101,172.20.10.101
E-Series Nodes :	0	NTP Servers :	172.21.10.101,172.20.10.101
V-Series Nodes :	2	Top Level Domain :	company.corp
P-Series Nodes :	2	TOR Switch Enablement	
S-Series Nodes :	0	# of Top of Rack Switches :	2
G-Series Nodes :	0	Switch Implementation :	Dell EMC to configure and integrate new switches
Number of Nodes :	4	ESRS	
Hybrid/Flash :	Flash	ESRS IP :	172.21.11.47
Rack Type :	4 Post Square	ESRS Type :	Outside VxRail
Required Rack Space :	8	eServices Account Name :	Admin
Rack Location or Label :	DC2.0.01A.N6	VMware Validated Design	
# of Power Connections :	8	Deploy VVD on VxRail ? :	No
Network Connection Type :	SFP+	Proxy Server	
Hardware Version :	14G	Proxy Server :	N/A
Global NIC configuration :	2x10Gbe	Proxy Port :	
Features Accounted for in Sizing		Proxy Username :	
Deduplication Used :	N	Proxy Password :	
Encryption Used :	N		
Erasure Coding Used :	N		

You have received the attached PEQ for an upcoming VxRail implementation. However, you have no additional supporting documents.

Who should be your first point of contact for additional information?

- A. Systems Engineer
- B. Solutions Architect
- C. Customer
- D. Project Manager

Answer: ([SHOW ANSWER](#))

NEW QUESTION: 87

A systems engineer is deploying a VxRail cluster. They want to ensure that configuration issues can be avoided when expanding this cluster.

Which actions need to be performed?

- A. Validate that the latest updates and patches are installed in the system
Validate that no pending and unfinished jobs are running on the servers
- B. Validate that no pending and unfinished jobs are running on the servers
Verify that the server and storage components are working properly
- C. Verify VxRail nodes are racked and connected to the ToR switches
Validate the network environment
- D. Verify the configuration settings initially captured in PEQ
Validate the storage environment

Answer: A ([LEAVE A REPLY](#))

NEW QUESTION: 88

An infrastructure system audit will begin in two weeks. All data center devices will be checked to ensure they contain the installed patches and configurations. A system engineer will update the VxRail hosts with the latest patches and remediate security vulnerabilities.

What troubleshooting resource can a user receive from Dell and use proactively to help perform the remediation tasks?

- A. SolVe Online
- B. Advisories
- C. KB articles
- D. Log files

Answer: D ([LEAVE A REPLY](#))

NEW QUESTION: 89

How long is the grace period for the vSphere evaluation licenses in a new VxRail implementation?

- A. 60 days
- B. 90 days
- C. 45 days
- D. 30 days

Answer: ([SHOW ANSWER](#))

NEW QUESTION: 90

Which vSAN license is included with VxRail?

- A. vSAN Advanced
- B. vSAN Enterprise
- C. vSAN Standard
- D. vSAN for ROBO

Answer: ([SHOW ANSWER](#))

NEW QUESTION: 91

An implementation engineer logs in to the vSphere Client of a recently deployed VxRail cluster. They want to review the firmware versions on the VxRail nodes.

Which view should they use to gather this information?

- A. Host and Clusters > VxRail Host > Monitor > VxRail > Physical View
- B. Hosts and Clusters > VxRail Cluster > Configure > VxRail > System
- C. Hosts and Clusters > VxRail Cluster > Monitor > VxRail > Appliances
- D. Hosts and Clusters > VxRail Host > Configure > VxRail > iDRAC Configuration

Answer: ([SHOW ANSWER](#))

Valid D-VXR-DY-01 Dumps shared by Actual4test.com for Helping Passing D-VXR-DY-01 Exam! Actual4test.com now offer the **newest D-VXR-DY-01 exam dumps**, the Actual4test.com D-VXR-DY-01 exam **questions have been updated** and **answers have been corrected** get the **newest** Actual4test.com D-VXR-DY-01 dumps with Test Engine here: https://www.actual4test.com/D-VXR-DY-01_examcollection.html (345 Q&As Dumps, **30%OFF** Special Discount: **Freepdfdumps**)

NEW QUESTION: 92

A company is planning to deploy VxRail for business critical applications. The solution should support automated workload re-balancing.

Which vSphere license is required for this solution?

- A. vSphere Enterprise
- B. vSphere with Operations Management Enterprise
- C. vSphere Enterprise Plus
- D. vSphere Standard

Answer: C ([LEAVE A REPLY](#))

NEW QUESTION: 93

Which two log files can be used for troubleshooting when deploying a new VxRail Cluster?

- A. loudmouth.log and short.term.log
- B. localhost_access_log.txt and dayone.log
- C. marvin.log and dayone.log
- D. loudmouth.log and dayone.log

Answer: ([SHOW ANSWER](#)**)**

NEW QUESTION: 94

A VxRail D560 cluster was delivered six months ago and now needs to be prepared for installation with the target code.

What is the correct method to complete the task?

- A. Boot into RASR USB and perform a RASR Reset
- B. Boot into SD card and perform a Factory Reset
- C. Boot into RASR ISO and perform a Factory Reset
- D. Boot into RASR ISO and perform a RASR Reset

Answer: C ([LEAVE A REPLY](#))

NEW QUESTION: 95

You are validating that a network environment is ready for a 4 node VxRail Model V570F deployment.

What types of DNS records must be created for VxRail components before implementation can begin?

- A. Forward (A) records and Reverse (PTR) records
- B. Forward (A) and MX records
- C. NS records and Reverse (PTR) records
- D. Forward (A) records only

Answer: A ([LEAVE A REPLY](#))

NEW QUESTION: 96

An implementation engineer is expanding an existing VxRail E Series cluster with an additional node. The version of the node is not at the current cluster level and is not compatible.

What action must be performed before adding the node?

- A. RASR Factory Reset
- B. Order node with correct image
- C. RASR Factory Image Upgrade
- D. Compute node expansion

Answer: B ([LEAVE A REPLY](#))

NEW QUESTION: 97

A customer requires a Stretched VxRail Cluster with S570 nodes in its minimal configuration.

Which setup will fulfill the requirement?

- A. 4+4 nodes
- B. 6+6 nodes
- C. 2+2 nodes
- D. 3+3 nodes

Answer: ([SHOW ANSWER](#))

NEW QUESTION: 98

A company has a two-chassis G Series cluster and wants to change the setup. This will require a reset of the chassis.

What is the correct procedure?

- A. Reset the primary chassis first, followed by the secondary chassis, through the reset script.
- B. Reset both chassis simultaneously with the mobile build server
- C. Reset the secondary chassis first, followed by the primary chassis, through the reset script.
- D. Reset both chassis simultaneously through the reset script

Answer: ([SHOW ANSWER](#))

NEW QUESTION: 99

What is a consideration when adding nodes to a VxRail G Series chassis?

- A. G Series can only scale up to 8 nodes
- B. All nodes in a G Series chassis must be identical
- C. Hybrid and All-Flash nodes are permitted, if in different chassis
- D. In a full G Series chassis, all nodes must have 10GbE ports

Answer: B ([LEAVE A REPLY](#))

NEW QUESTION: 100

You are in the validation phase of a VxRail deployment with two Top of Rack (ToR) switches and four V570F VxRail nodes.

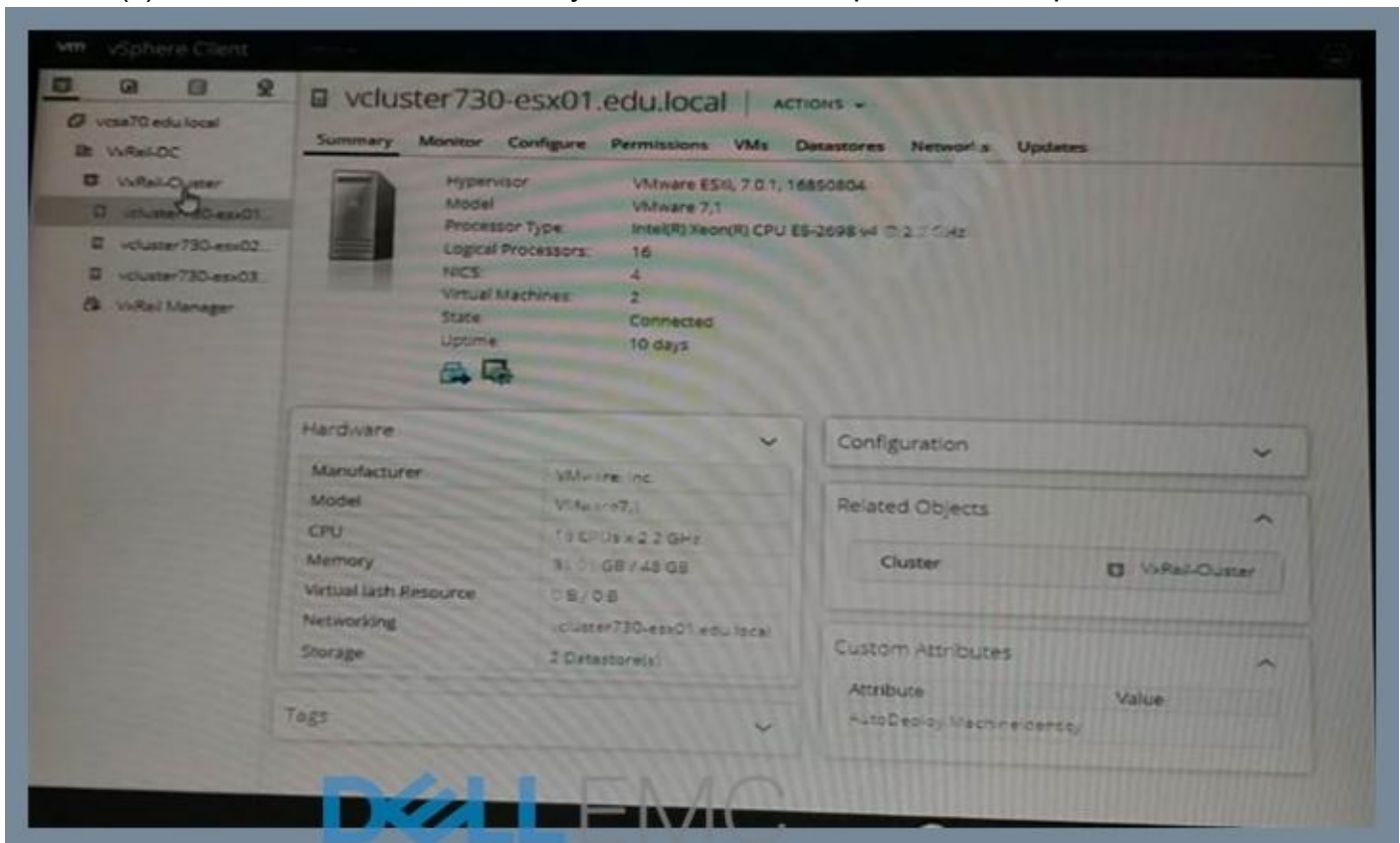
Which command should you issue on each of the ToR switches to validate that Link Aggregation has not been configured for VxRail interfaces?

- A. show spanning tree
- B. show vlan
- C. show running config mld
- D. show interfaces port-channel brief

Answer: ([SHOW ANSWER](#))

NEW QUESTION: 101


A VxRail Cluster has just been deployed. Use the VxRail simulator to determine the Service Tag, Model, and ESXJ IP Address of the first node - vcluster730.esx01.edu.local. Note: It is necessary to close (x) the simulator window before you can select a response to this question.



vm vSphere Client

vcsa70.edu.local | ACTIONS

Summary Monitor Configure Permissions Datacenters Hosts & Clusters VMs Datastores Networks

 Version: 7.0.1
Build: 17005016
Last Updated: Nov 24, 2020, 7:04 AM
Last File-Based Backup: Not scheduled

Clusters: 1
Hosts: 3
Virtual Machines: 4

Custom Attributes
Tags

Health Status
Overall Health ✔ Good


APPLIANCE MANAGEMENT
vCenter HA

DELL EMC

vm vSphere Client

vcsa70.edu.local | ACTIONS

VxRail-DC Summary Monitor Configure Permissions Hosts & Clusters VMs Datastores Networks Updates

 Hosts: 3
Virtual Machines: 4
Clusters: 1
Networks: 1
Datastores: 1


Custom Attributes
Tags

DELL EMC

vm vSphere Client

vcsa70.edu.local | ACTIONS

VxRail-Cluster Summary Monitor Configure Permissions Hosts VMs Datastores Networks Updates

 Total Processors: 48
Total vMotion Migrations: 0
Fault Domains: 3

Related Objects
Datacenter: VxRail-DC

vSphere HA
Protected

CPU reserved for failover:	25%
Memory reserved for failover:	25%
Proactive HA:	Disabled
Host Monitoring:	Enabled
VM Monitoring:	Disabled

vSphere DRS
Cluster Consumers
Tags
Cluster Resources
Custom Attributes

Attribute	Value
VxRail-Cluster-Tag	STANDARD
VxRail-IP	192.168.10.16
VxRail-SSL-THUMBPRINT	79:84:6B:E9:5F:00:25
VxRail-VERSION	7.0.100
com.vmware.vcenter.plu...	

DELL EMC

vm vSphere Client

vcluster730-esx01.edu.local | ACTIONS -

Summary Monitor Configure Permissions VMs Datastores Networks Updates

 Hypervisor: VMware ESX, 7.0.1, 16850804
 Model: VMware 7,1
 Processor Type: Intel(R) Xeon(R) CPU E5-2698 v4 @ 2.2 GHz
 Logical Processors: 16
 NICs: 4
 Virtual Machines: 2
 State: Connected
 Uptime: 10 days

Hardware

Manufacturer	VMware, Inc.
Model	VMware7,1
CPU	16 CPUs x 2.2 GHz
Memory	31.01 GB / 48 GB
Virtual flash Resource	0 B / 0 B
Networking	vcluster730-esx01.edu.local
Storage	2 Datastore(s)

Configuration

Related Objects

Cluster VxRail-Cluster

Custom Attributes

Attribute	Value
AutoDeploy	MachineIdentity


Tags



vm vSphere Client

vcluster730-esx03.edu.local | ACTIONS -

Summary Monitor Configure Permissions Datastores Networks Snapshots Updates

 Guest OS: SUSE Linux Enterprise15 (64-bit)
 Compatibility: ESX 6.5 and later (VM version 12)
 VMware Tools: Running version 11.0.0 (Guest Managed)
 DNS Name: vxrail-manager1.edu.local
 IP Addresses: 192.168.10.10
 Host: vcluster730-esx01.edu.local

VM Hardware

Notes


Related Objects

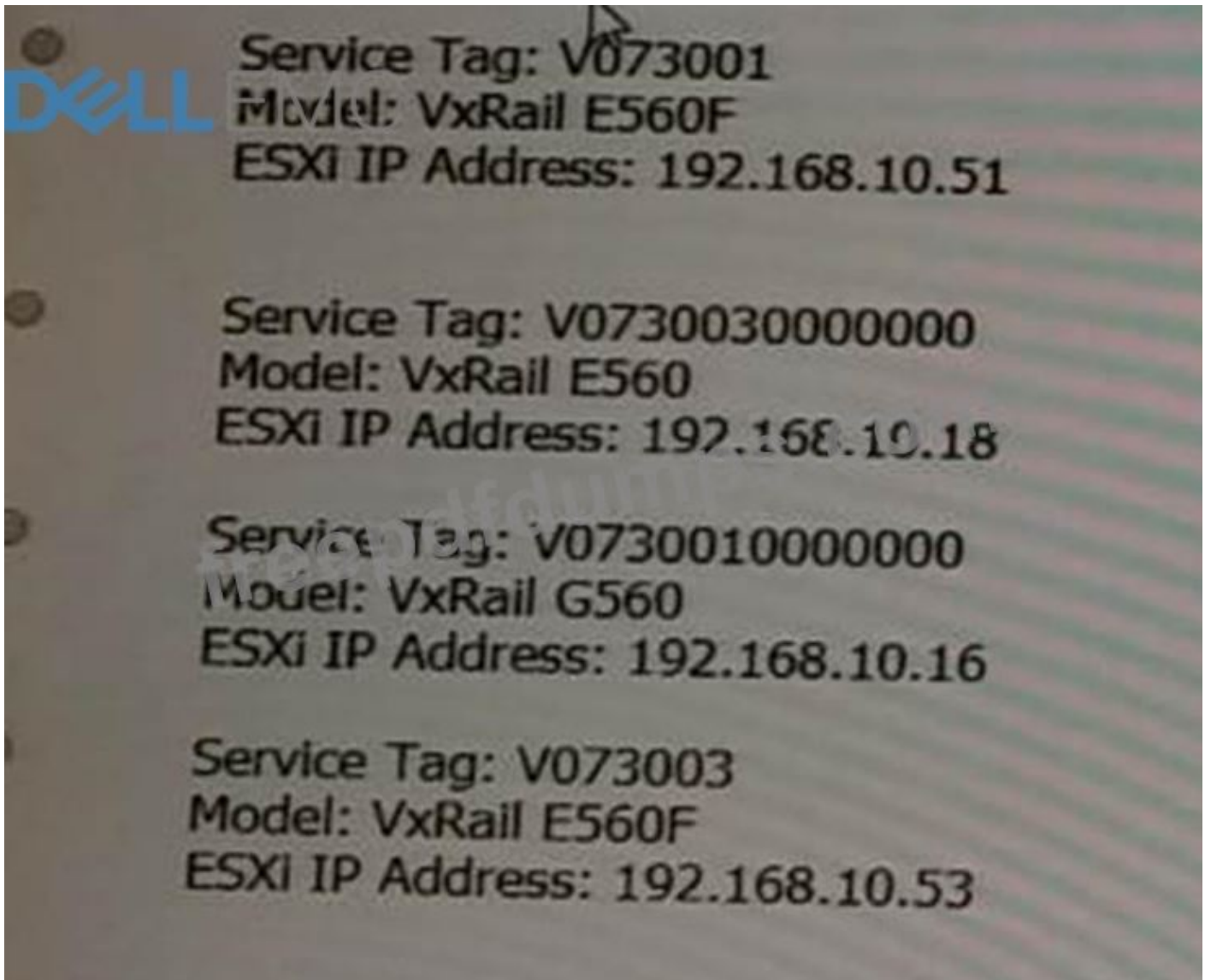
Custom Attributes

Tags

vSphere HA

VM Storage Policies





- A. Option A
- B. Option C
- C. Option B
- D. Option D

Answer: D ([LEAVE A REPLY](#))

NEW QUESTION: 102

An implementation engineer is validating a VxRail deployment of six V570F nodes, each with four 10 Gb connections. The VxRail nodes have not been powered on.

Which command should they run to confirm that the Dell EMC ToR switch is configured correctly?

- A. show interface status
- B. show lldp neighbors
- C. show running-config
- D. show port-channel summary

Answer: ([SHOW ANSWER](#))

NEW QUESTION: 103

When using the VxRail Deployment Wizard, what is the correct format to enter the name of a VxRail-deployed vCenter Server?

- A. FQDN
- B. IP address
- C. Hostname

Answer: C ([LEAVE A REPLY](#))

NEW QUESTION: 104

A systems engineer is tasked to configure a VxRail cluster and notices that the VxRail Deployment Wizard fails to launch. The engineer discovers that the software is corrupted. What should the engineer do to address the issue?

- A. Use the VMware Host Client and iDRAC to access the nodes for troubleshooting
- B. Check vCenter and troubleshoot the build failure
- C. Verify that the JSON file is not corrupted and has all the required values
- D. Return the nodes to the original build state

Answer: D ([LEAVE A REPLY](#))

NEW QUESTION: 105

An implementation engineer is tasked with expanding an 8-node VxRail E560 cluster with an S570 node. Each node has 1GbE RJ45 ports.

What must the engineer consider when expanding the cluster?

- A. All nodes in the cluster must be the identical series
- B. AMD- and Intel-based nodes cannot be mixed
- C. E Series nodes require more capacity before expansion
- D. Node limit has been reached on the cluster

Answer: D ([LEAVE A REPLY](#))

NEW QUESTION: 106

Which license is required for vSAN Data-At-Rest Encryption, and what is characteristic of this type of encryption?

- A. Requires vSAN Enterprise
Applies to the entire datastore
- B. Requires vSAN Advanced
Applies on a per VM basis
- C. Requires vSAN Standard
Applies on a per VM basis
- D. Requires vSAN Enterprise Plus
Applies to the entire datastore

Answer: ([SHOW ANSWER](#)**)**

Valid D-VXR-DY-01 Dumps shared by Actual4test.com for Helping Passing D-VXR-DY-01 Exam! Actual4test.com now offer the **newest D-VXR-DY-01 exam dumps**, the Actual4test.com D-VXR-DY-01 exam **questions have been updated** and **answers have been corrected** get the **newest** Actual4test.com D-VXR-DY-01 dumps with Test Engine here: https://www.actual4test.com/D-VXR-DY-01_examcollection.html (345 Q&As Dumps, **30%OFF** Special Discount: **Freepdfdumps**)

NEW QUESTION: 107

Where can the latest VxRail Pre-Installation Site Checklist be obtained for a new deployment?

- A. EMC Support VxRail
- B. SolVe
- C. VxRail Master Knowledge Base article
- D. Service offering index

Answer: A (LEAVE A REPLY)

NEW QUESTION: 108

A company has indicated that they do not want to change the native VLAN for their entire switch. Based on best practice, how should the Top of Rack (ToR) switch be configured?

- A. Do not configure ToR switch native VLAN and instead tag the VLAN on VxRail
- B. Set the native VLAN only at the VxRail trunk ports
- C. The native VLAN for the switch must be set
- D. Set the native VLAN on the switch ISL ports

Answer: D (LEAVE A REPLY)

NEW QUESTION: 109

During a VxRail installation, the deployment fails at 9%.

```

    },
    "vcenter": {
        "ip": ""
    },
    "psc": {
        "ip": ""
    },
    "evorail": {
        "ip": "192.168.80.12"
    }
},
"hostnames": {
    "hosts": {
        "prefix": "vxrail-ctl-esx",
        "separator": "",
        "iterator": "NUMERIC_N"
    },
    "tld": "vlab.local",
    "vcenter": "",
    "psc": "",
    "evorail": "vxrail-ctl-manager"
},
"passwords": {
    "esxiPassword": "Welc0me! ",
    "esxiPasswordConfirm": "Welc0me! ",
    "vcPassword": "Welc0me! ",
    "vcPasswordConfirm": "Welc0me! ",
    "activeDirectoryDomain": "",
    "activeDirectoryUsername": "",
    "activeDirectoryPassword": "",
    "activeDirectoryPasswordConfirm": "
},
"global": {
    "logging": "NONE",
    "timezone": "europe/brussels",
    "loginsightServer": "",
    "loginsightHostname": "",
    "syslogServerCSV": ""
}

```

Based on the exhibit, what could be the reason for this failure?

- A. Domain name .local is not supported
- B. Password field has an extra space
- C. Time zone is in an incorrect format
- D. vCenter and PSC information is missing

Answer: D ([LEAVE A REPLY](#))

Actual4test.com D-VXR-DY-01 exam **questions have been updated** and **answers have been corrected** get the **newest** Actual4test.com D-VXR-DY-01 dumps with Test Engine here: https://www.actual4test.com/D-VXR-DY-01_examcollection.html (**345** Q&As Dumps, **30%OFF** Special Discount: **Freepdfdumps**)