

NetworkAppliance.NS0-402.v2021-08-13.q19

Exam Code:	NS0-402
Exam Name:	NetApp Certified Hybrid Cloud - Implementation Engineer
Certification Provider:	Network Appliance
Free Question Number:	19
Version:	v2021-08-13
# of views:	779
# of Questions views:	190
https://www.freepdfdumps.com/NetworkAppliance.NS0-402.v2021-08-13.q19.html	

NEW QUESTION: 1

Which three automation frameworks provide the ability to configure a desired state? (Choose three.)

- A. Azure Resource Manager
- B. Ansible
- C. Terraform
- D. AWS CloudFormation
- E. Puppet

Answer: B,C,E (LEAVE A REPLY)

NEW QUESTION: 2

You have an application that runs once per month to provide analytics and report generation. You are asked to use cloud compute resources to run this application. However, your existing environment consists of a single AFF A300 HA pair.

In this scenario, which two actions would satisfy the requirements? (Choose two.)

- A. Use the NetApp Cloud Volumes Service in AWS.
- B. Use the NetApp Cloud Sync service.
- C. Configure FabricPool on existing aggregates by using Amazon Simple Storage Service (Amazon S3).
- D. Use the NetApp Cloud Backup Service.

Answer: A,B (LEAVE A REPLY)

NEW QUESTION: 3

Your company is implementing NetApp Cloud Insights to monitor the company's on-premises NetApp AFF storage and Amazon Elastic Compute Cloud (Amazon EC2) instances.

Which information is required to configure the Amazon EC2 data collector to monitor the performance of the EC2 instances?

- A. NetApp Cloud Manager password
- B. AWS root user
- C. AWS IAM access key ID
- D. AWS IAM Management Console password

Answer: C ([LEAVE A REPLY](#))

NEW QUESTION: 4

A customer has implemented a NetApp-based hybrid cloud solution using AFF A700 on-premises and Cloud Volumes ONTAP for AWS. When attempting to cut over workloads from on-premises to AWS, a final SnapMirror update fails.

In this scenario, what are two validation points to ensure cutover success? (Choose two.)

- A. OnCommand Cloud Manager installed
- B. network connectivity between the sites
- C. capacity on the destination volumes
- D. bandwidth on the source volumes

Answer: C,D ([LEAVE A REPLY](#))

NEW QUESTION: 5

You have virtual desktops that are hosted in both AWS and Azure. The desktops need to connect to your on-premises database by using Azure ExpressRoute and AWS Direct Connect.

In this scenario, which routing protocol supports this connectivity?

- A. RIP
- B. OSPF
- C. EIGRP
- D. BGP

Answer: ([SHOW ANSWER](#)**)**

NEW QUESTION: 6

You deployed a NetApp HCI private cloud system using a six-cable configuration. You are asked to make changes to the network configuration post-deployment.

In this scenario, which configuration change is supported?

- A. Change vSwitch names.
- B. Remove default port groups.
- C. Remove virtual interfaces.
- D. Add virtual interfaces.

Answer: ([SHOW ANSWER](#)**)**

NEW QUESTION: 7

A customer has implemented a NetApp-based hybrid cloud solution using NetApp Cloud Volumes ONTAP for AWS and NetApp Cloud Volumes ONTAP for Azure. Users are complaining about

slow read and write speeds when they access data from Microsoft Azure while they are using compute resources in AWS.

Which three actions would solve the problem? (Choose three.)

- A. Modify the underlying storage resources of Cloud Volumes ONTAP for Azure.
- B. Increase the instance size and type of Cloud Volumes ONTAP for AWS.
- C. Move user compute resources to AWS from Azure.
- D. Monitor network connectivity between AWS and Azure.
- E. Transition volumes from Cloud Volumes ONTAP for Azure to Cloud Volumes ONTAP for AWS.

Answer: B,C,D ([LEAVE A REPLY](#))

NEW QUESTION: 8

Your company asks you to deploy a new version control management system.

In this scenario, which two tools would accomplish this task? (Choose two.)

- A. Confluence
- B. GitHub
- C. SourceForge
- D. ALM

Answer: A,B ([LEAVE A REPLY](#))

NEW QUESTION: 9

You are installing NetApp Cloud Sync to transfer data from an NFS mount point on-premises to Amazon Simple Storage Service (Amazon S3). The NFS directory has 500 directories with approximately 300 files each.

In this scenario, which actions will improve the overall transfer time?

- A. Add more than one Cloud Sync data broker.
- B. Change the transfer type from HTTPS to HTTP.
- C. Install the Cloud Sync data broker in AWS EC2.
- D. Use the ls command on the root of the source NFS mount point.

Answer: A ([LEAVE A REPLY](#))

NEW QUESTION: 10

You are deploying NetApp Cloud Volumes ONTAP in Azure. As part of this deployment, you must enable NetApp Volume Encryption (NVE) to protect your data at rest.

In this scenario, which supported step would you perform?

- A. Enable the Onboard Key Manager.
- B. Purchase an Encryption license.
- C. Install External Key Manager.
- D. Use Azure storage service encryption.

Answer: C ([LEAVE A REPLY](#))

NEW QUESTION: 11

Which statement is correct about Trident storage virtual pools?

- A.** Trident storage virtual pools provide a layer of abstraction between Trident's storage backends and Kubernetes Storage Class.
- B.** Trident storage virtual pools provide a way to monitor backend storage systems and remove unreachable storage from the available Kubernetes Storage Class options.
- C.** Trident storage virtual pools provide a list of additional parameters that can be attached to a Kubernetes Storage Class.
- D.** Trident storage virtual pools provide a predefined set of data in a storage pool that can be used for container boot processes.

Answer: A ([LEAVE A REPLY](#))

NEW QUESTION: 12

You are asked to help a customer architect a private cloud solution using a tightly integrated converged infrastructure that can be managed by the vendor. You decide to present FlexPod Managed Private Cloud as a solution.

In this scenario, what are three results of this solution? (Choose three.)

- A.** only available with software-defined storage
- B.** allows for a variety of server vendors
- C.** the ability to present storage using FC, iSCSI, or NFS
- D.** validated designs that are available for a variety of applications
- E.** the ability to provide rapid redeployment of resources using software-defined service profiles

Answer: C,D,E ([LEAVE A REPLY](#))

NEW QUESTION: 13

You are writing an Ansible playbook and using the official NetApp modules. You must provide credentials for a NetApp ONTAP cluster in a secure manner.

Which two actions should be used to accomplish this task? (Choose two.)

- A.** Pass the value as an interactive input from the command line.
- B.** Pass the value as an argument on the command line.
- C.** Pass the value within the playbook itself.
- D.** Pass the value using Ansible vault.

Answer: ([SHOW ANSWER](#)**)**

NEW QUESTION: 14

You have a NetApp ONTAP Select instance that is serving a 400 GB nfsv3 export to an IoT application. You need to run AI in AWS on this dataset for both reads and writes to update metadata. The master copy of the data must remain in ONTAP Select.

In this scenario, which NetApp technology will enable the capability for a master on-premises copy and a remote AWS copy of the same dataset?

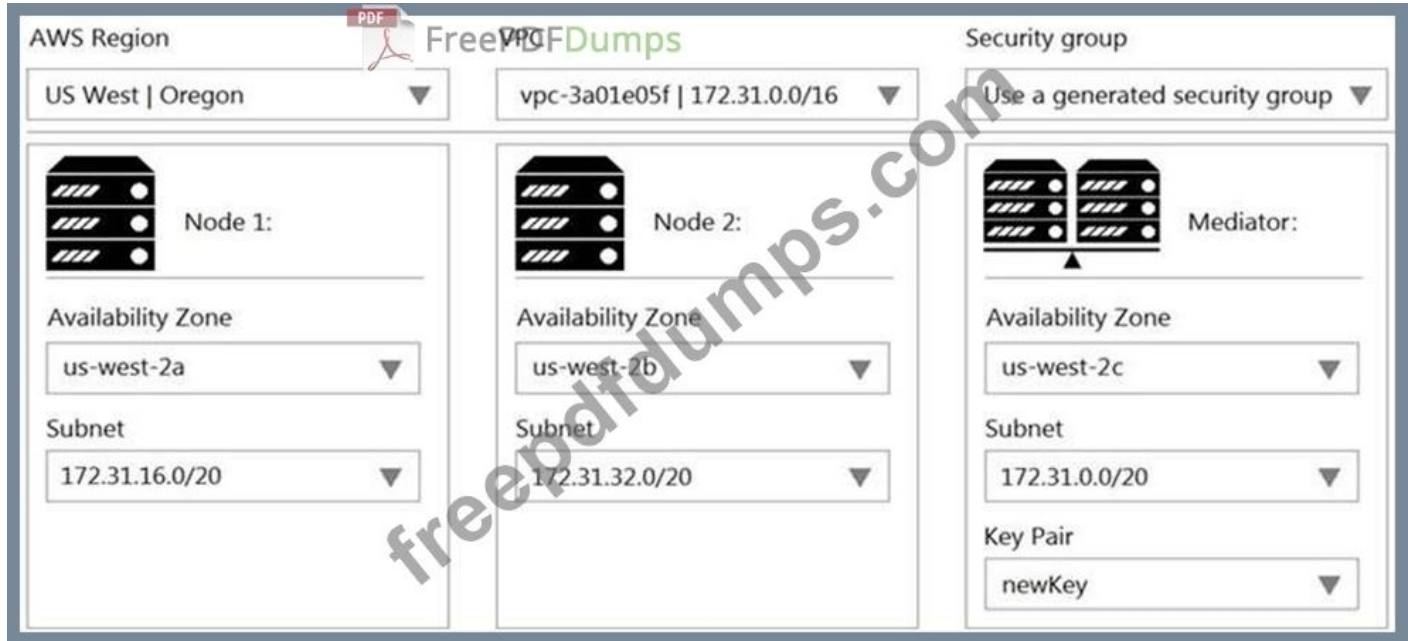
- A.** FabricPool
- B.** Flash Cache

- C. FlexCache
- D. Flash Pool

Answer: C (LEAVE A REPLY)

NEW QUESTION: 15

You have an on-premises AFF A320 cluster that will use SnapMirror to replicate all data to the cloud instance shown in the exhibit.



Which action will enable end-to-end connectivity for SnapMirror?

- A. Set up a VPN connection between the AFF A320 network and the AWS VPC.
- B. Create a VPC Endpoint from the HA mediator to the AWS S3 service.
- C. Set up an outbound connection from the HA mediator instance to the AWS EC2 service.
- D. Set up a FabricPool connection between the AFF A320 network and the AWS VPC.

Answer: (SHOW ANSWER)

NEW QUESTION: 16

You are asked to implement a monitoring solution for your VM environment that is hosted on NetApp storage; however, you have no budget for this task. You decide to use Cloud Insights to accomplish your task.

What are two capabilities of this solution? (Choose two.)

- A. Create customized, real-time dashboards.
- B. Set up monitoring and alerting.
- C. Integrate Cloud Insights with your ActiveIQ information.
- D. Enable user data access auditing.

Answer: A,B (LEAVE A REPLY)

Valid NS0-402 Dumps shared by Actual4test.com for Helping Passing NS0-402 Exam! Actual4test.com now offer the **newest NS0-402 exam dumps**, the Actual4test.com NS0-402 exam **questions have been updated** and **answers have been corrected** get the **newest** Actual4test.com NS0-402 dumps with Test Engine here:

https://www.actual4test.com/NS0-402_examcollection.html (60 Q&As Dumps, **30%OFF**

Special Discount: Freepdfdumps)

NEW QUESTION: 17

Your software development team is working on a new stateful containerized application that requires persistent storage. The team develops software on their local workstations prior to deploying to test and production environments. The team wants to create a consistent experience across the various stages of the software development life-cycle.

In this scenario, which NetApp product should the team use?

- A. NetApp Cloud Volumes Service
- B. NetApp ONTAP Select
- C. NetApp Cloud Volumes ONTAP
- D. Azure NetApp Files

Answer: C (LEAVE A REPLY)

NEW QUESTION: 18

A customer is experiencing an I/O bottleneck with one VMware hosted workload in their NetApp HCI cluster that is part of their hybrid cloud. The solution must be immediate and non-disruptive.

In this scenario, which corrective action should the customer perform?

- A. Add additional memory and CPU to the ESXi host.
- B. Modify the QoS on this particular workload to allow it to use the resources available.
- C. Dynamically migrate the workload to a different NetApp HCI ESXi host in the cluster.
- D. Dynamically migrate the workload including storage to a nearby AWS region.

Answer: (SHOW ANSWER)

NEW QUESTION: 19

You have the variable file shown in the exhibit.

```
# variable.yml

volume:
- vol1
  vol2
- vol3
```

Which task would enable you to iterate over this group?

- A)

```
- name: Volume create
  na_ontap_volume:
    state: present
    hostname: cluster1
    username: admin
    password: netapp123
    name: "{ item }"
    size: 10
    aggregate: aggr1
    vserver: vserver1
  with_items:
    "{ volume }"
```

B)

```
- name: volume create
  na_ontap_volume:
    state: present
    hostname: cluster1
    username: admin
    password: netapp123
    name: "$item"
    size: 10
    aggregate: aggr1
    vserver: vserver1
  with_items:
    "{{ volume }}"
```

C)

D)

A. Option C

B. Option A

C. Option B

D. Option D

Answer: C ([LEAVE A REPLY](#))

Valid NS0-402 Dumps shared by Actual4test.com for Helping Passing NS0-402 Exam!

Actual4test.com now offer the **newest NS0-402 exam dumps**, the Actual4test.com NS0-402 exam **questions have been updated** and **answers have been corrected** get the **newest**

Actual4test.com NS0-402 dumps with Test Engine here:

https://www.actual4test.com/NS0-402_examcollection.html (60 Q&As Dumps, **30%OFF**

Special Discount: Freepdfdumps)