

Salesforce.Data-Architecture-And-Management-Designer.v2024-07-03.q101

Exam Code:	Data-Architecture-And-Management-Designer
Exam Name:	Salesforce Certified Data Architecture and Management Designer
Certification Provider:	Salesforce
Free Question Number:	101
Version:	v2024-07-03
# of views:	452
# of Questions views:	1010
https://www.freepdfdumps.com/Salesforce.Data-Architecture-And-Management-Designer.v2024-07-03.q101.html	

NEW QUESTION: 1

A large Automobile company has implemented SF for its Sales Associates. Leads flow from its website to SF using a batch integration in SF. The Batch job connects the leads to Accounts in SF. Customer visiting their retail stores are also created in SF as Accounts.

The company has noticed a large number of duplicate accounts in SF. On analysis, it was found that certain customers could interact with its website and also visit the store. The Sales associates use Global Search to search for customers in Salesforce before they create the customers.

Which scalable option should a data Architect choose to implement to avoid duplicates?

- A.** Implement a MDM solution to validate the customer information before creating Accounts in SF.
- B.** Create duplicate rules in SF to validate duplicates during the account creation process
- C.** Customize Account creation process to search if customer exists before creating an Account.
- D.** Build Custom search based on fields on Accounts which can be matched with customer when they visit the store

Answer: ([SHOW ANSWER](#))

NEW QUESTION: 2

Universal Container (UC) has around 200,000 Customers (stored in Account object). They get 1 or 2 Orders every month from each Customer. Orders are stored in a custom object called "Order_c"; this has about 50 fields. UC is expecting a growth of 10% year-over-year. What are two considerations an architect should consider to improve the performance of SOQL queries that retrieve data from the Order_c object? Choose 2 answers

- A.** Work with Salesforce Support to enable Skinny Tables.
- B.** Reduce the number of triggers on Order_c object.

- C. Use SOQL queries without WHERE conditions.
- D. Make the queries more selective using indexed fields.

Answer: A,D ([LEAVE A REPLY](#))

NEW QUESTION: 3

UC has a salesforce org with multiple automated processes defined for group membership process. UC also have multiple admins on staff that perform manual adjustments to the role hierarchy. The automated task and manual task overlap daily and UC is experiencing "Lock errors" consistently.

What should a data architect recommend mitigate these errors?

- A. Enable granular locking.
- B. Enable sharing recalculations
- C. Ask salesforce support for addition CPU power.
- D. Remove SOQL statements from APEX loops.

Answer: A ([LEAVE A REPLY](#))

NEW QUESTION: 4

A customer is operating in a highly reputed industry and is planning to implement SF. The customer information maintained in SF, includes the following:

- * Personally, identifiable information (PII)
- * IP restrictions on profiles organized by Geographic location
- * Financial records that need to be private and accessible only by the assigned Sales associate.
- * User should not be allowed to export information from Salesforce.

Enterprise security has mandate access to be restricted to users within a specific geography and detail monitoring of user activity. Which 3 Salesforce shield capabilities should a data architect recommend? Choose

3 answers:

- A. Prevent Sales users access to customer PII information
- B. Encrypt Sensitive Customer information maintained in SF.
- C. Event monitoring to monitor all user activities
- D. Transaction security policies to prevent export of SF Data.
- E. Restrict access to SF from users outside specific geography

Answer: ([SHOW ANSWER](#))

NEW QUESTION: 5

Universal Container (UC) has around 200,000 Customers (stored in Account object). They get 1 or 2 Orders every month from each Customer. Orders are stored in a custom object called "Order c"; this has about 50 fields. UC is expecting a growth of 10% year -over -year.

What are two considerations an architect should consider to improve the performance of SOQL queries that retrieve data from the Order _c object? Choose 2 answers

- A. Work with Salesforce Support to enable Skinny Tables.

- B. Use SOQL queries without WHERE conditions.
- C. Make the queries more selective using indexed fields.
- D. Reduce the number of triggers on Order _c object.

Answer: A,C ([LEAVE A REPLY](#))

NEW QUESTION: 6

Universal Containers (UC) has a Salesforce instance with over 10,000 Account records. They have noticed similar, but not identical, Account names and addresses. What should UC do to ensure proper data quality?

- A. Use a service to standardize Account addresses, then use a 3rd -party tool to merge Accounts based on rules.
- B. Run a report, find Accounts whose name starts with the same five characters, then merge those Accounts.
- C. Enable Account de -duplication by creating matching rules in Salesforce, which will mass merge duplicate Accounts.
- D. Make the Account Owner clean their Accounts' addresses, then merge Accounts with the same address.

Answer: C ([LEAVE A REPLY](#))

NEW QUESTION: 7

Universal Containers (UC) has several custom Visualforce applications have been developed in which users are able to edit Opportunity records. UC struggles with data completeness on their Opportunity records and has decided to make certain fields required that have not been in the past. The newly required fields are dependent on the Stage of the Opportunity, such that certain fields are only required once an Opportunity advances to later stages. There are two fields. What is the simplest approach to handle this new requirement?

- A. Update these Opportunity field definitions in Setup to be required.
- B. Update the Opportunity page layout to mark these fields as required.
- C. Write an Apex trigger that checks each field when records are saved.
- D. Use a validation rule for each field that takes the Stage into consideration.

Answer: D ([LEAVE A REPLY](#))

NEW QUESTION: 8

What 2 data management policies does the data classification feature allow customers to classify in salesforce? Choose 2 answers:

- A. Reference data policy.
- B. Compliance categorization policy.
- C. Data governance policy.
- D. Data sensitivity policy.

Answer: B,D ([LEAVE A REPLY](#))

NEW QUESTION: 9

Universal Containers (UC) has a complex system landscape and is implementing a data governance program for the first time. Which two first steps would be appropriate for UC to initiate an assessment of data architecture? Choose 2 answers.

- A. Engage with business units and IT to assess current operational systems and data models.
- B. Engage with IT program managers to assess current velocity of projects in the pipeline.
- C. Engage with executive sponsorship to assess enterprise data strategy and goals.
- D. Engage with database administrators to assess current database performance metrics.

Answer: A,C ([LEAVE A REPLY](#))

NEW QUESTION: 10

Universal Containers (UC) has an open sharing model for its Salesforce users to allow all its Salesforce internal users to edit all contacts, regardless of who owns the contact. However, UC management wants to allow only the owner of a contact record to delete that contact. If a user does not own the contact, then the user should not be allowed to delete the record. How should the architect approach the project so that the requirements are met?

- A. Create a validation rule on the Contact object to check if the current user is not the owner.
- B. Set the profile of the users to remove delete permission from the Contact object.
- C. Set the Sharing settings as Public Read Only for the Contact object.
- D. Create a "before delete" trigger to check if the current user is not the owner.

Answer: ([SHOW ANSWER](#))

NEW QUESTION: 11

UC developers have created a new lightning component that uses an Apex controller using a SOQL query to populate a custom list view. Users are complaining that the component often fails to load and returns a time-out error.

What tool should a data architect use to identify why the query is taking too long?

- A. Open a ticket with Salesforce support to retrieve transaction logs to be analyzed for processing time.
- B. Use Splunk to query the system logs looking for transaction time and CPU usage.
- C. Use Salesforce's query optimizer to analyze the query in the developer console.
- D. Enable and use the query plan tool in the developer console.

Answer: D ([LEAVE A REPLY](#))

NEW QUESTION: 12

Universal Containers (UC) wants to store product data in Salesforce, but the standard Product object does not support the more complex hierarchical structure which is currently being used in the product master system. How can UC modify the standard Product object model to support a hierarchical data structure in order to synchronize product data from the source system to Salesforce?

- A.** Create an Apex trigger to synchronize the Product Family standard picklist field on the Product object.
- B.** Create a custom lookup field on the standard Product to reference the child record in the hierarchy.
- C.** Create a custom master-detail field on the standard Product to reference the child record in the hierarchy.
- D.** Create a custom lookup field on the standard Product to reference the parent record in the hierarchy.

Answer: ([SHOW ANSWER](#))

NEW QUESTION: 13

A customer wants to maintain geographic location information including latitude and longitude in a custom object. What would a data architect recommend to satisfy this requirement?

- A.** Recommend app exchange packages to support this requirement.
- B.** Create custom fields to maintain latitude and longitude information
- C.** Create a geolocation custom field to maintain this requirement
- D.** Create formula fields with geolocation function for this requirement.

Answer: **C** ([LEAVE A REPLY](#))

NEW QUESTION: 14

Cloud Kicks has a Salesforce instance with 12,000 Account records. Managers at the company have noticed similar, but not identical, Account names and addresses.

The Chief Technology Officer (CTO) at Cloud Kicks is concerned about proper data quality.

Which steps should the CTO take to address this issue?

- A.** 1. Have the Account Owner clean their Accounts' addresses.
2. Merge Accounts with the same address.
- B.** 1. Enable Account de-duplication by creating matching rules in Salesforce.
2. The system will then mass merge duplicate Accounts.
- C.** 1. Run a report.
2. Find Accounts whose name starts with the same five characters, and merge those Accounts.
- D.** 1. Use a service to standardize Account addresses.
2. Use a 3rd-party tool to merge Accounts based on rules.

Answer: **B** ([LEAVE A REPLY](#))

NEW QUESTION: 15

Ursa Major Solar has defined a new Data Quality Plan for their Salesforce data.

Which two approaches should an Architect recommend to enforce the plan throughout the organization?

(Choose two.)

- A.** Enforce critical business processes by using Workflow, Validation Rules, and Apex code.

- B. Ensure all data is stored in an external system and set up an integration to Salesforce for view-only access.
- C. Schedule reports that will automatically catch duplicates and merge or delete the records every week.
- D. Schedule a weekly dashboard displaying records that are missing information to be sent to managers for review.

Answer: ([SHOW ANSWER](#))

NEW QUESTION: 16

A customer wishes to migrate 700,000 Account records in a single migration into Salesforce. What is the recommended solution to migrate these records while minimizing migration time?

- A. Use Salesforce Bulk API in parallel mode.
- B. Use Salesforce Bulk API in serial mode.
- C. Use Salesforce Soap API in serial mode.
- D. Use Salesforce Soap API in parallel mode.

Answer: A ([LEAVE A REPLY](#))

Valid Data-Architecture-And-Management-Designer Dumps shared by Actual4test.com for Helping Passing Data-Architecture-And-Management-Designer Exam! Actual4test.com now offer the **newest Data-Architecture-And-Management-Designer exam dumps**, the Actual4test.com Data-Architecture-And-Management-Designer exam **questions have been updated** and **answers have been corrected** get the **newest** Actual4test.com Data-Architecture-And-Management-Designer dumps with Test Engine here:

[https://www.actual4test.com/Data-Architecture-And-Management-](https://www.actual4test.com/Data-Architecture-And-Management-Designer_examcollection.html)

[Designer_examcollection.html](https://www.actual4test.com/Data-Architecture-And-Management-Designer_examcollection.html) (224 Q&As Dumps, **30%OFF Special Discount:**

Freepdfdumps)

NEW QUESTION: 17

Universal Containers wants to develop a dashboard in Salesforce that will allow Sales Managers to do data exploration using their mobile device (i.e., drill down into sales-related data) and have the possibility of adding ad-hoc filters while on the move. What is a recommended solution for building data exploration dashboards in Salesforce?

- A. Create a Dashboard in an external reporting tool, export data to the tool, and add link to the dashboard in Salesforce.
- B. Create a Dashboard in an external reporting tool, export data to the tool, and embed the dashboard in Salesforce using the Canval toolkit.
- C. Create a standard Salesforce Dashboard and connect it to reports with the appropriate filters.
- D. Create a Dashboard using Analytics Cloud that will allow the user to create ad-hoc lenses and drill down.

Answer: D ([LEAVE A REPLY](#))

NEW QUESTION: 18

DreamHouse Realty has a Salesforce org that is used to manage Contacts.

What are two things an Architect should consider using to maintain data quality in this situation?

(Choose two.)

- A. Use validation rules on new record create and edit.
- B. Utilize Salesforce duplicate management.
- C. Use workflow to delete duplicate records.
- D. Utilize the private sharing model.

Answer: A,B ([LEAVE A REPLY](#))

NEW QUESTION: 19

Universal Containers (UC) has a Salesforce org with multiple automated processes defined for group membership processing. UC also has multiple admins on staff that perform manual adjustments to the role hierarchy. The automated tasks and manual tasks overlap daily, and UC is experiencing "lock errors" consistently.

What should a data architect recommend to mitigate these errors?

- A. Enable granular locking
- B. Ask Salesforce support for additional CPU power
- C. Remove SOQL statements from Apex Loops
- D. Enable sharing recalculations

Answer: ([SHOW ANSWER](#))

Explanation/Reference: https://help.salesforce.com/articleView?id=000325942&language=en_US&type=1&mode=1

NEW QUESTION: 20

Universal Containers (UC) is implementing its new Internet of Things technology, which consists of smart containers that provide information on container temperature and humidity updated every 10 minutes back to UC. There are roughly 10,000 containers equipped with this technology with the number expected to increase to 50,000 across the next five years. It is essential that Salesforce user have access to current and historical temperature and humidity data for each container. What is the recommended solution?

- A. Create a new Container Reading custom object, which is created when a new measure is received for a specific container. The Container Reading custom object has a master- detail relationship to the container object.
- B. Create a new Container Reading custom object with a master-detail relationship to Container which is created when a new measure is received for a specific container. Implement an archiving process that runs every hour.

C. Create a new Lightning Component that displays last humidity and temperature data for a specific container and can also display historical trends obtaining relevant data from UC's existing data warehouse.

D. Create new custom fields for temperature and humidity in the existing Container custom object, as well as an external ID field that is unique for each container. These custom fields are updated when a new measure is received.

Answer: ([SHOW ANSWER](#))

NEW QUESTION: 21

Cloud Kicks currently has a Public Read/Write sharing model for the company's Contacts. Cloud Kicks management team requests that only the owner of a contact record be allowed to delete that contact.

What should an Architect do to meet these requirements?

A. Check if the current user is NOT the owner by creating a validation rule on the Contact object.

B. Check if the current user is NOT the owner by creating a "before delete" trigger.

C. Set the Sharing settings as Public Read Only for the Contact object.

D. Set the profile of the users to remove delete permission from the Contact object.

Answer: **B** ([LEAVE A REPLY](#))

NEW QUESTION: 22

Cloud Kicks needs to purge detailed transactional records from Salesforce. The data should be aggregated at a summary level and available in Salesforce.

What are two automated approaches to fulfill this goal? (Choose two.)

A. Apex Triggers

B. Third-party Integration Tool (ETL)

C. Third-party Business Intelligence system

D. Schedulable Batch Apex

Answer: ([SHOW ANSWER](#))

NEW QUESTION: 23

Universal Containers (UC) has implemented Salesforce, UC is running out of storage and needs to have an archiving solution, UC would like to maintain two years of data in Salesforce and archive older data out of Salesforce.

Which solution should a data architect recommend as an archiving solution?

A. Build a batch job to move all records off platform, and delete old records from Salesforce.

B. Build a batch job to move all records off platform, and delete all records from Salesforce.

C. Build a batch job to move two-year-old records off platform, and delete records from Salesforce.

D. Use a third-party backup solution to backup all data off platform.

Answer: **D** ([LEAVE A REPLY](#))

NEW QUESTION: 24

UC is migrating individual customers (B2C) data from legacy systems to SF. There are millions of customers stored as accounts and contacts in legacy database.

Which object model should a data architect configure within SF ?

- A. Leverage custom person account object in SF
- B. Leverage custom account and contact object in SF
- C. Leverage person account object in Salesforce
- D. Leverage standard account and contact object in SF

Answer: C ([LEAVE A REPLY](#))

NEW QUESTION: 25

Northern trail Outfitters (NTO) runs its entire out of an enterprise data warehouse (EDW), NTO's sales team starting to use Salesforce after a recent implementation, but currently lacks data required to advanced and opportunity to the next stage.

NTO's management has research Salesforce Connect and would like to use It to virtualize and report on data from the EDW within Salesforce. NTO will be running thousands of reports per day across 10 to 15 external objects.

What should a data architect consider before implementing Salesforce Connect for reporting?

- A. OData callout limits per day
- B. Maximum page size for server-driven paging
- C. Maximum external objects per org
- D. Maximum number for records returned

Answer: ([SHOW ANSWER](#))

NEW QUESTION: 26

Universal Containers (UC) is expecting to have nearly 5 million shipments records in its Salesforce org. Each shipment record has up to 10 child shipment item records. The Shipment custom object has an Organization-wide Default (OWD) sharing model set to Private and the Shipment Item custom object has a Master-Detail relationship to Shipment.

There are 25 sharing rules set on the Shipment custom object, which allow shipment records to be shared to each of UC's 25 business areas around the globe. These sharing rules use public groups, one for each business area plus a number of groups for management and support roles. UC has a high turnover of Sales Reps and often needs to move Sales Reps between business areas in order to meet local demand. What feature would ensure that performance, when moving Sales Reps between regions, remains adequate while meeting existing requirements?

- A. Contact Salesforce to enable Defer Sharing Rules
- B. Implement data archiving for old Shipment records.
- C. Configure shipment OWD to Public Read/Write.
- D. Contact Salesforce to create Skinny tables on Shipment.

Answer: A ([LEAVE A REPLY](#))

NEW QUESTION: 27

NTO has multiple systems across its enterprise landscape including salesforce, with disparate version the customer records.

In salesforce, the customer is represented by the contact object.

NTO utilizes an MDM solution with these attributes:

1. The MDM solution keeps track of customer master with a master key.
2. The master key is a map to the record ID's from each external system that customer data is stored within.
3. The MDM solution provides de-duplication features, so it acts as the single source of truth.

How should a data architect implement the storage of master key within salesforce?

- A. Create a custom object to store the master key with a lookup field to contact.
- B. Create an external object to store the master key with a lookup field to contact.
- C. Store the master key in Heroku postgres and use Heroku connect for synchronization.
- D. Store the master key on the contact object as an external ID (Field for referential imports)

Answer: D ([LEAVE A REPLY](#))

NEW QUESTION: 28

Universal Containers (UC) is using Salesforce Sales & Service Cloud for B2C sales and customer service but they are experiencing a lot of duplicate customers in the system.

Which are two recommended approaches for UC to avoid duplicate data and increase the level of data quality?

- A. Use Data.com Clean
- B. Use a data warehouse.
- C. Use Duplicate Management.
- D. Use an Enterprise Service Bus.

Answer: A,C ([LEAVE A REPLY](#))

NEW QUESTION: 29

A company has 12 million records, and a nightly integration queries these records.

Which two areas should a Data Architect investigate during troubleshooting if queries are timing out? (Choose two.)

- A. Make sure the query doesn't contain NULL in any filter criteria.
- B. Create a formula field instead of having multiple filter criteria.
- C. Create custom indexes on the fields used in the filter criteria.
- D. Modify the integration users' profile to have View All Data.

Answer: A,C ([LEAVE A REPLY](#))

Explanation/Reference:

NEW QUESTION: 30

Universal Containers is creating a new B2C service offering for consumers to ship goods across continents.

This is in addition to their well-established B2B offering. Their current Salesforce org uses the standard Account object to track B2B customers. They are expecting to have over 50,000,000 consumers over the next five years across their 50 business regions. B2C customers will be individuals. Household data is not required to be stored. What is the recommended data model for consumer account data to be stored in Salesforce?

- A. Create a new picklist value for B2C customers on the Account Type field.
- B. Use the Account object with Person Accounts and a new B2C page layout.
- C. Use 50 umbrella Accounts for each region, with customers as associated Contacts.
- D. Use the Account object with a newly created Record Type for B2C customers.

Answer: B (LEAVE A REPLY)

NEW QUESTION: 31

Universal Containers (UC) is a major supplier of office supplies. Some products are produced by UC and some by other manufacturers. Recently, a number of customers have complained that product descriptions on the invoices do not match the descriptions in the online catalog and on some of the order confirmations (e.g.,

"ballpoint pen" in the catalog and "pen" on the invoice, and item color labels are inconsistent: "what vs.

"White" or "blk" vs. "Black"). All product data is consolidated in the company data warehouse and pushed to Salesforce to generate quotes and invoices. The online catalog and webshop is a Salesforce Customer Community solution. What is a correct technique UC should use to solve the data inconsistency?

- A. Add custom fields to the Product standard object in Salesforce to store data from the different source systems.
- B. Change integration to let product master systems update product data directly in Salesforce via the Salesforce API.
- C. Define a data taxonomy for product data and apply the taxonomy to the product data in the data warehouse.
- D. Build Apex Triggers in Salesforce that ensure products have the correct names and labels after data is loaded into salesforce.

Answer: C (LEAVE A REPLY)

Valid Data-Architecture-And-Management-Designer Dumps shared by Actual4test.com for Helping Passing Data-Architecture-And-Management-Designer Exam! Actual4test.com now offer the **newest Data-Architecture-And-Management-Designer exam dumps**, the Actual4test.com Data-Architecture-And-Management-Designer exam **questions have been updated** and **answers have been corrected** get the **newest** Actual4test.com Data-Architecture-And-Management-Designer dumps with Test Engine here:
<https://www.actual4test.com/Data-Architecture-And-Management->

NEW QUESTION: 32

Northern Trail Outfitters (NTO) has outgrown its current Salesforce org and will be migrating to a new org shortly. As part of this process, NTO will be migrating all of its metadata and data. NTO's data model in the source org has a complex relationship hierarchy with several master-detail and lookup relationships across objects, which should be maintained in the target org.

Which three things should a data architect do to maintain the relationship hierarchy during migration? (Choose three.)

- A. Use data loader to export the data from the source org and then import/upsert into the target org in sequential order.
- B. Create an external ID field for each object in the target org and map source record IDs to this field.
- C. Keep the relationship fields populated with the source record IDs in the import file.
- D. Redefine the master-detail relationship fields to lookup relationship fields in the target org.
- E. Replace source record IDs with new record IDs from the target org in the import file.

Answer: A,B,C ([LEAVE A REPLY](#))

NEW QUESTION: 33

Universal Containers (UC) is in the process of selling half of its company. As part of this split, UC's main Salesforce org will be divided into two orgs: Org A and Org

B. UC has delivered these requirements to its data architect:

1. The data model for Org B will drastically change with different objects, fields, and picklist values.
2. Three million records will need to be migrated from Org A to Org B for compliance reasons.
3. The migration will need occur within the next two months, prior to the split.

Which migration strategy should a data architect use to successfully migrate the data?

- A. Use Data Loader for export and Data Import Wizard for import.
- B. Use the Salesforce CLI to query, export, and import.
- C. Use an ETL tool to orchestrate the migration.
- D. Write a script to use the Bulk API.

Answer: ([SHOW ANSWER](#))

NEW QUESTION: 34

Universal Containers (UC) requires 2 years of customer related cases to be available on SF for operational reporting. Any cases older than 2 years and upto 7 years need to be available on demand to the Service agents.

UC creates 5 million cases per yr.

Which 2 data archiving strategies should a data architect recommend? Choose 2 options:

- A. Use custom objects for cases older than 2 years and use nightly batch to move them.

B. Use Heroku and external objects to display cases older than 2 years and bulk API to hard delete from Salesforce.

C. Sync cases older than 2 years to an external database, and provide access to Service agents to the database

D. Use Big objects for cases older than 2 years, and use nightly batch to move them.

Answer: B,D (LEAVE A REPLY)

NEW QUESTION: 35

Ursa Major Solar plans to use Salesforce to manage their sales organization. However, the company has legacy account data from two aging systems that must be migrated into Salesforce. The Chief Technology Officer (CTO) at Ursa Major Solar is concerned about data duplication and needs it minimized.

What are two design considerations an Architect should take in this scenario? (Choose two.)

A. Use Salesforce matching and duplicate rules.

B. Import the data concurrently.

C. Check and prevent duplicates by using a workflow.

D. Before importing into Salesforce, clean the data.

Answer: A,D (LEAVE A REPLY)

NEW QUESTION: 36

Universal Containers is implementing Salesforce lead management. UC Procure lead data from multiple sources and would like to make sure lead data as company profile and location information. Which solution should a data architect recommend to make sure lead data has both profile and location information? Option

A. Leverage external data providers populate company profile and location data

B. Run reports to identify records which does not have company profile and location data

C. Ask sales people to search for populating company profile and location data

D. Export data out of Salesforce and send to another team to populate company profile and location data

Answer: B (LEAVE A REPLY)

NEW QUESTION: 37

UC has one SF org (Org A) and recently acquired a secondary company with its own Salesforce org (Org B). UC has decided to keep the orgs running separately but would like to bidirectionally share opportunities between the orgs in near-real time.

Which 3 options should a data architect recommend to share data between Org A and Org B?

Choose 3 answers.

A. Leverage middleware tools to bidirectionally send Opportunity data across orgs.

B. Develop an Apex class that pushes opportunity data between orgs daily via the Apex schedule.

C. Use Salesforce Connect and the cross-org adapter to visualize Opportunities into external objects

D. Install a 3rd party AppExchange tool to handle the data sharing

E. Leverage Heroku Connect and Heroku Postgres to bidirectionally sync Opportunities.

Answer: ([SHOW ANSWER](#))

NEW QUESTION: 38

Universal Container (UC) stores 10 million rows of inventory data in a cloud database, As part of creating a connected experience in Salesforce, UC would like to this inventory data to Sales Cloud without a import. UC has asked its data architect to determine if Salesforce Connect is needed.

Which three consideration should the data architect make when evaluating the need for Salesforce Connect?

A. You need to small amounts of external data at any one time.

B. You want real-time access to the latest data, from other systems.

C. You have a large amount of data and would like to copy subsets of it into Salesforce.

D. You need to expose data via a virtual private connection.

E. You have a large amount of data that you don't want to copy into your Salesforce org.

Answer: A,B,E ([LEAVE A REPLY](#))

NEW QUESTION: 39

Universal Containers has a legacy system that captures Conferences and Venues. These Conferences can occur at any Venue. They create hundreds of thousands of Conferences per year. Historically, they have only used

20 Venues. Which two things should the data architect consider when denormalizing this data model into a single Conference object with a Venue picklist? Choose 2 answers

A. Bulk API limitations on picklist fields.

B. Limitations on master -detail relationships.

C. Standard list view in -line editing.

D. Org data storage limitations.

Answer: A,C ([LEAVE A REPLY](#))

NEW QUESTION: 40

Northern Trail Outfitters (NTO) has decided to franchise its brand. Upon implementation 1,000 franchisees will be able to access NTO's product information and track large customer sales and opportunities through a portal. The franchisees will also be able to run monthly and quarterly sales reports and projections as well as view the reports in dashboards.

Which license does NTO need to provide these features to the franchisees?

A. Lightning Platform License

B. Customer Community License

C. Salesforce Sales Cloud License

D. Partner Community License

Answer: ([SHOW ANSWER](#))

NEW QUESTION: 41

A customer is operating in a highly regulated industry and is planning to implement Salesforce. The customer information maintained in Salesforce, includes the following:

1. Personally identifiable information (PII)
2. IP restrictions on profiles organized by geographic location
3. Financial records that need to be private and accessible only by the assigned sales associate
4. Users should not be allowed to export information from Salesforce

Enterprise Security has mandated access to be restricted to users within a specific geography and detail monitoring of user activity.

Which three Salesforce Shield capabilities should a data architect recommend? (Choose three.)

- A. Prevent sales users access to customer PII information
- B. Event monitoring to monitor all user activity
- C. Restrict access to Salesforce from users outside specific geography
- D. Encrypt sensitive customer information maintained in Salesforce
- E. Transaction Security policies to prevent export of Salesforce data

Answer: B,C,D ([LEAVE A REPLY](#))

NEW QUESTION: 42

UC has multiple SF orgs that are distributed across regional branches. Each branch stores local customer data inside its org's Account and Contact objects. This creates a scenario where UC is unable to view customers across all orgs.

UC has an initiative to create a 360-degree view of the customer, as UC would like to see Account and Contact data from all orgs in one place.

What should a data architect suggest to achieve this 360-degree view of the customer?

- A. Build a bidirectional integration between all orgs.
- B. Use an ETL tool to migrate gap Accounts and Contacts into each org.
- C. Use Salesforce Connect's cross-org adapter.
- D. Consolidate the data from each org into a centralized datastore

Answer: D ([LEAVE A REPLY](#))

NEW QUESTION: 43

Universal Containers (UC) is a business that works directly with individual consumers (B2C). They are moving from a current home-grown CRM system to Salesforce. UC has about one million consumer records. What should the architect recommend for optimal use of Salesforce functionality and also to avoid data loading issues?

- A. Load all individual consumers as Account records and avoid using the Contact object.
- B. Create a Custom Object Individual Consumer c to load all individual consumers.
- C. Load one Account record and one Contact record for each individual consumer.

D. Create one Account and load individual consumers as Contacts linked to that one Account.

Answer: C ([LEAVE A REPLY](#))

NEW QUESTION: 44

NTO has 1 million customer records spanning 25 years. As part of its new SF project, NTO would like to create a master data management strategy to help preserve the history and relevance of its customer data.

Which 3 activities will be required to identify a successful master data management strategy?

Choose 3 answers:

- A. Create a data archive strategy
- B. Define the systems of record for critical data
- C. Choose a Business Intelligence tool.
- D. Identify data to be replicated
- E. Install a data warehouse

Answer: ([SHOW ANSWER](#))

NEW QUESTION: 45

A data architect has been tasked with optimizing a data stewardship engagement for a Salesforce instance Which three areas of Salesforce should the architect review before proposing any design recommendation?

Choose 3 answers

- A. Run key reports to determine what fields should be required.
- B. Determine if any integration points create records in Salesforce.
- C. Review the sharing model to determine impact on duplicate records.
- D. Review the metadata xml files for redundant fields to consolidate.
- E. Export the setup audit trail to review what fields are being used.

Answer: A,C,D ([LEAVE A REPLY](#))

NEW QUESTION: 46

An Architect needs to assist Get Cloudy Consulting to maintain Lead data, even after Lead records are deleted and the Recycle Bin emptied.

What should the Architect do to implement this solution?

- A. Use a Lead standard report and filter on the IsDeleted standard field.
- B. Send data to a Data Warehouse and mark Leads as deleted in that system.
- C. Query Salesforce with the queryAll API method or using the ALL ROWS SOQL keywords.
- D. Use a Converted Lead report to display data on Leads that have been deleted.

Answer: B ([LEAVE A REPLY](#))

Valid Data-Architecture-And-Management-Designer Dumps shared by Actual4test.com for Helping Passing Data-Architecture-And-Management-Designer Exam! Actual4test.com now offer the **newest Data-Architecture-And-Management-Designer exam dumps**, the Actual4test.com Data-Architecture-And-Management-Designer exam **questions have been updated** and **answers have been corrected** get the **newest** Actual4test.com Data-Architecture-And-Management-Designer dumps with Test Engine here:
https://www.actual4test.com/Data-Architecture-And-Management-Designer_examcollection.html (224 Q&As Dumps, **30%OFF Special Discount: Freepdfdumps**)

NEW QUESTION: 47

Northern Trail Outfitters has decided that it is going to build a channel sales portal with the following requirements:

1. External resellers are able to authenticate to the portal with a login.
2. Lead data, Opportunity data, and Order data are available to authenticated users.
3. Authenticated users may need to run reports and dashboards.
4. There is no need for more than 10 custom objects or additional file storage.

Which Community Cloud license type should a data architect recommend to meet the portal requirements?

- A. Customer Community Plus
- B. Customer Community
- C. Lightning External Apps Starter
- D. Partner Community

Answer: D (LEAVE A REPLY)

NEW QUESTION: 48

Cloud Kicks has the following requirements:

- Data needs to be sent from Salesforce to an external system to generate invoices from their Order Management System (OMS).
- A Salesforce administrator must be able to customize which fields will be sent to the external system without changing code.

What are two approaches for fulfilling these requirements? (Choose two.)

- A. A Field Set that determines which fields to send in an HTTP callout.
- B. An ObjectField to determine which fields to send in an HTTP callout.
- C. An Outbound Message to determine which fields to send to the OMS.
- D. Turn on the field-level security permissions for the fields to send.

Answer: A,C (LEAVE A REPLY)

NEW QUESTION: 49

Universal Containers has 30 million case records. The Case object has 80 fields. Agents are reporting performance issues and time-outs while running case reports in the Salesforce org. Which solution should a data architect recommend to improve reporting performance?

- A. Move data off of the platform and run reporting outside Salesforce, and give access to reports.
- B. Contact Salesforce support to enable skinny table for cases.
- C. Build reports using custom Lightning components.
- D. Create a custom object to store aggregate data and run reports.

Answer: ([SHOW ANSWER](#))

NEW QUESTION: 50

UC is migrating data from legacy system to SF. UC would like to preserve the following information on records being migrated:

Date time stamps for created date and last modified date.

Ownership of records belonging to inactive users being migrated to Salesforce.

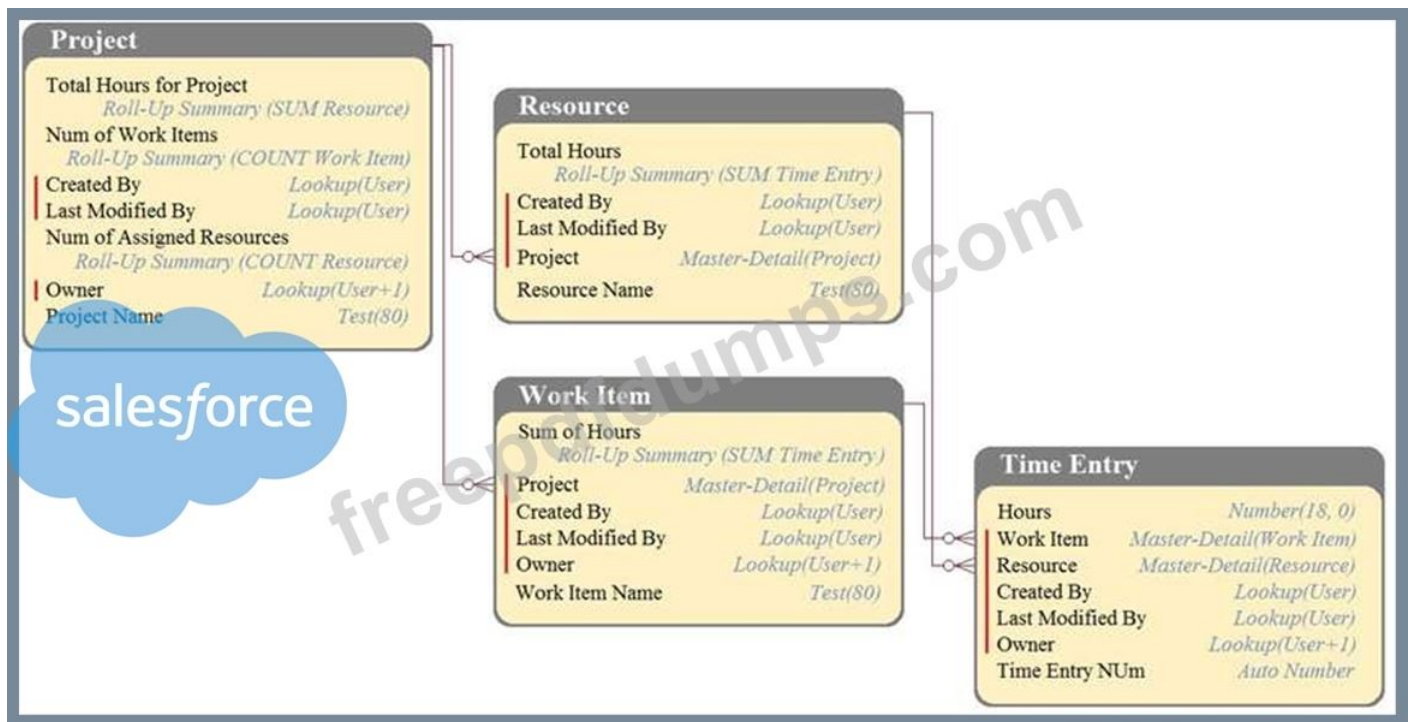
Which 2 solutions should a data architect recommends to preserve the date timestamps and ownership on records? Choose 2 answers.

- A. Enable modify all and view all permission.
- B. Enable Set Audit fields upon Record Creation Permission
- C. Log a case with SF to update these fields
- D. Enable update records with Inactive Owners Permission

Answer: B,D ([LEAVE A REPLY](#))

NEW QUESTION: 51

DreamHouse Realty has a data model as shown in the image. The Project object has a private sharing model, and it has Roll-Up summary fields to calculate the number of resources assigned to the project, total hours for the project, and the number of work items associated to the project. There will be a large amount of time entry records to be loaded regularly from an external system into Salesforce.



- A. Load all data using external IDs to link to parent records.
- B. Calculate summary values instead of Roll-Up by using triggers.
- C. Calculate summary values instead of Roll-Up by using workflow.
- D. Load all data after deferring sharing calculations.

Answer: ([SHOW ANSWER](#))

NEW QUESTION: 52

A casino is implementing salesforce and is planning to build a customer 360 view for a customer who visits its resorts. The casino currently maintained the following systems that records customer activity:

1. Point of sales system: All purchases for a customer.
2. Salesforce: All customer service activity and sales activity for a customer.
3. Mobile app: All bookings, preferences and browser activity for a customer.
4. Marketing: All email, SMS and social campaigns for a customer.

Customer service agents using salesforce would like to view the activities from all system to provide supports to customers. The information has to be current and real time.

What strategy should the data architect implement to satisfy this requirement?

- A. Periodically upload summary information in salesforce to build 360 view.
- B. Use a customer data mart to view the 360 view of customer.
- C. Migrate customer activities from all 4 systems into salesforce.
- D. Explore external data sources in salesforce to build 360 view of customer.

Answer: D ([LEAVE A REPLY](#))

NEW QUESTION: 53

A large insurance provider is looking to implement Salesforce. The following conditions exist:

1. Multiple channels for lead acquisition

2. Duplicate leads across channels
3. Poor customer experience and higher costs

On analysis, it was found that there are duplicate leads that are resulting in multiple quotes and opportunities.

Which three actions should a data architect recommend to mitigate the issues? (Choose three.)

- A. Implement de-duplication strategy to prevent duplicate leads.
- B. Build process to manually search and merge duplicates.
- C. Build a custom solution to identify and merge duplicate leads.
- D. Standardize lead information across all channels.
- E. Implement third-party solution to clean and enrich lead data.

Answer: (SHOW ANSWER)

Explanation/Reference: <https://docs.civcrm.org/user/en/latest/common-workflows/deduping-and-merging/>

<https://automationchampion.com/tag/identify-and-merge-duplicate-leads-in-lightning-experience/>

<https://launchpoint.marketo.com/assets/1598-openprise/10543-analyze-clean-enrich-and-unify-your-data/The-Complete-Enrichment-Survival-Guide-for-Marketing-and-Sales.pdf>

NEW QUESTION: 54

UC has a salesforce org with multiple automated processes defined for group membership process. UC also have multiple admins on staff that perform manual adjustments to the role hierarchy. The automated task and manual task overlap daily and UC is experiencing "Lock errors" consistently.

What should a data architect recommend mitigate these errors?

- A. Enable sharing recalculations
- B. Remove SOQL statements from APEX loops.
- C. Enable granular locking.
- D. Ask salesforce support for addition CPU power.

Answer: B (LEAVE A REPLY)

NEW QUESTION: 55

DreamHouse Realty uses Custom Metadata Types instead of Custom setting.

What is an advantage of this decision?

- A. Custom metadata records are NOT copied from production to sandbox.
- B. Packages can be used to deploy Custom metadata records.
- C. Report definitions can include references to Custom Metadata Types.
- D. Custom metadata records are editable in Apex.

Answer: B (LEAVE A REPLY)

NEW QUESTION: 56

DreamHouse Realty recently implemented a Sales Cloud. Managers have noticed that sales reps are entering an insufficient amount of data to run insightful reports and dashboards. The managers would like to monitor and measure data quality metrics.

Which solution addresses this requirement?

- A. Use custom objects and fields to calculate data quality.
- B. Utilize third-party AppExchange tools to measure and monitor data quality.
- C. Run and generate reports to view the quality of sample data.
- D. Export the data to an enterprise data warehouse and use BI tools for data quality.

Answer: ([SHOW ANSWER](#))

NEW QUESTION: 57

Company S was recently acquired by Company T.

As part of the acquisition, all of the data for the Company S's Salesforce instance (source) must be migrated into the Company T's Salesforce instance (target). Company S has 6 million Case records.

An Architect has been tasked with optimizing the data load time.

What should the Architect consider to achieve this goal?

- A. Load the data in multiple sets using Bulk API parallel processes.
- B. Directly leverage Salesforce-to-Salesforce functionality to load Case data.
- C. Utilize the Salesforce Org Migration Tool from the Setup Data Management menu.
- D. Pre-process the data, then use Data Loader with SOAP API to upsert with zip compression enabled.

Answer: D ([LEAVE A REPLY](#))

NEW QUESTION: 58

Universal Containers developers have created a new Lightning component that uses an Apex controller using a SOQL query to populate a custom list view. Users are complaining that the component often fails to load and returns a time-out error.

What tool should a data architect use to identify why the query is taking too long?

- A. Enable and use the Query Plan tool in the developer console
- B. Use Splunk to query the system logs looking for transaction time and CPU usage
- C. Use Salesforce's query optimizer to analyze the query in the developer console
- D. Open a ticket with Salesforce support to retrieve transaction logs to be analyzed for processing time

Answer: C ([LEAVE A REPLY](#))

Explanation

Explanation/Reference:

https://trailhead.salesforce.com/content/learn/modules/database_basics_dotnet/writing_efficient_queries

NEW QUESTION: 59

An architect has been asked to provide error messages when a future date is detected in a custom Birthdate _c field on the Contact object. The client wants the ability to translate the error messages. What are two approaches the architect should use to achieve this solution? Choose 2 answers

- A. Implement a third -party validation process with translate functionality.
- B. Create a validation rule and translate the error message with translation workbench.
- C. Create a workflow field update to set the standard ErrorMessage field.
- D. Create a trigger on Contact and add an error to the record with a custom label.

Answer: ([SHOW ANSWER](#))

NEW QUESTION: 60

Universal Containers (UC) provides shipping services to its customers. They use Opportunities to track customer shipments. At any given time, shipping status can be one of the 10 values. UC has 200,000 Opportunity records. When creating a new field to track shipping status on opportunity, what should the architect do to improve data quality and avoid data skew?

- A. Create a text field and make it an external ID.
- B. Create a picklist field, values sorted alphabetically.
- C. Create a Master -Detail to custom object ShippingStatus c.
- D. Create a Lookup to custom object ShippingStatus c.

Answer: B ([LEAVE A REPLY](#))

NEW QUESTION: 61

Universal Containers (UC) has users complaining about reports timing out or simply taking too long to run What two actions should the data architect recommend to improve the reporting experience? Choose 2 answers

- A. Share each report with fewer users.
- B. Create one skinny table per report.
- C. Index key fields used in report criteria.
- D. Enable Divisions for large data objects.

Answer: ([SHOW ANSWER](#))

Valid Data-Architecture-And-Management-Designer Dumps shared by Actual4test.com for Helping Passing Data-Architecture-And-Management-Designer Exam! Actual4test.com now offer the **newest Data-Architecture-And-Management-Designer exam dumps**, the Actual4test.com Data-Architecture-And-Management-Designer exam **questions have been updated** and **answers have been corrected** get the **newest** Actual4test.com Data-Architecture-And-Management-Designer dumps with Test Engine here:
<https://www.actual4test.com/Data-Architecture-And-Management->

NEW QUESTION: 62

Universal Containers has a legacy system that captures Conferences and Venues. These Conferences can occur at any Venue. They create hundreds of thousands of Conferences per year. Historically, they have only used 20 Venues. Which two things should the data architect consider when denormalizing this data model into a single Conference object with a Venue picklist? Choose 2 answers

- A. Org data storage limitations.
- B. Limitations on master -detail relationships.
- C. Standard list view in -line editing.
- D. Bulk API limitations on picklist fields.

Answer: C,D ([LEAVE A REPLY](#))

NEW QUESTION: 63

UC is using SF CRM. UC sales managers are complaining about data quality and would like to monitor and measure data quality.

Which 2 solutions should a data architect recommend to monitor and measure data quality?

Choose 2 answers.

- A. Use custom objects and fields to identify issues.
- B. Install and run data quality analysis dashboard app
- C. Review data quality reports and dashboards.
- D. Export data and check for data completeness outside of Salesforce.

Answer: ([SHOW ANSWER](#))

NEW QUESTION: 64

Universal Containers is looking to use Salesforce to manage their sales organization. They will be migrating legacy account data from two aging systems into Salesforce. Which two design considerations should an architect take to minimize data duplication? Choose 2 answers

- A. Clean data before importing to Salesforce.
- B. Use Salesforce matching and duplicate rules.
- C. Import the data concurrently.
- D. Use a workflow to check and prevent duplicates.

Answer: A,B ([LEAVE A REPLY](#))

NEW QUESTION: 65

UC has been using SF for 10 years. Lately, users have noticed, that the pages load slowly when viewing Customer and Account list view.

To mitigate, UC will implement a data archive strategy to reduce the amount of data actively loaded.

Which 2 tasks are required to define the strategy? Choose 2 answers:

- A. Identify the data retention requirements
- B. Identify the recovery point objective.
- C. Identify the recovery time objective.
- D. Identify how the archive data will be accessed and used.

Answer: ([SHOW ANSWER](#))

NEW QUESTION: 66

Universal Containers uses Salesforce to track its sales opportunities. The Sales VP would like to better understand key relevant performance figures and help the Sales Managers take corrective actions where appropriate. What reporting option should be considered?

- A. Lead conversion rate report
- B. Case SLA performance report
- C. Opportunity analytic snapshot
- D. Sales KPI Dashboard

Answer: D ([LEAVE A REPLY](#))

NEW QUESTION: 67

Universal Containers (UC) has built a B2C ecommerce site on Heroku that shares customer and order data with a Heroku Postgres database. UC is currently utilizing Postgres as the Single Source of Truth for both customers and orders. UC has asked a data architect to replicate this data into Salesforce so that Salesforce can now act as the System of Record.

What are the three considerations that a data architect should weigh before implementing this requirement?

(Choose three.)

- A. Determine if the data is a driver of key processes implemented within Salesforce.
- B. A selection of the tool required to replicate the data.
- C. Ensure the data is CRM-centric and able to populate standard or custom objects.
- D. Consider whether the data is required for sales reports, dashboards, and KPIs.
- E. Ensure there is a tight relationship between order data and an enterprise resource planning (ERP) application.

Answer: A,B,C ([LEAVE A REPLY](#))

NEW QUESTION: 68

Universal Containers (UC) has a requirement to create an Account plan object that is related to the Account object. Each Account plan needs to have an Account object, but the accessibility requirement of the Account plan is different from the Account object. What should an Architect recommend?

- A. Create a custom account plan object as detail with Account as master with additional sharing rules to allow access.

- B.** Create an account plan object with a lookup relations to Account without any validation rules to enforce the Account association.
- C.** Create an account plan object with a lookup relationship to Account with validation rules to enforce the Account association.
- D.** Create a custom account plan object as detail with Account as mater in a master-detail relationship.

Answer: C ([LEAVE A REPLY](#))

NEW QUESTION: 69

Universal Containers (UC) is planning to launch its Customer Community. The community will allow user to register shipment requests which are then processed by UC employees. Shipment requests contain header information, and then a list of no more than 5 items being shipped. UC will initially roll out its community to

5,000 customers in Europe, and will ultimately roll out to 20,000 customers worldwide within the next two years. UC expects an average of 10 shipment requests per week per customer. UC wants customers to be able to view up to three years of shipment requests and use Salesforce reports. What is the recommended solution for UC's Data Architect to address the requirements?

- A.** Create an external custom object to track shipment requests with five lookup custom fields for each item being shipped. External objects are stored off-platform in Heroku's Postgres database.
- B.** Create an external custom object to track shipment requests and a child external object to track shipment items. External objects are stored off-platform in Heroku's Postgres database.
- C.** Create a custom object to track shipment requests and a child custom object to track shipment items.

Implement an archiving process that moves data off-platform after three years.

- D.** Create a custom object to track shipment requests with five lookup custom fields for each item being shipped Implement an archiving process that moves data off-platform after three years.

Answer: C ([LEAVE A REPLY](#))

NEW QUESTION: 70

UC has large amount of orders coming in from its online portal. Historically all order are assigned to a generic user.

Which 2 measures should data architect recommend to avoid any performance issues while working with large number of order records? Choose 2 answers:

- A.** Salesforce handles the assignment of orders automatically and there is no performance impact.
- B.** Clear the role field in the generic user record.
- C.** Create a pool of generic users and distribute the assignment of memory to the pool of users.
- D.** Create a role at top of role hierarchy and assign the role to the generic user.

Answer: B,D ([LEAVE A REPLY](#))

NEW QUESTION: 71

Universal Containers (UC) has multi-level account hierarchies that represent departments within their major Accounts. Users are creating duplicate Contacts across multiple departments. UC wants to clean the data so as to have a single Contact across departments. What two solutions should UC implement to cleanse their data? Choose 2 answers

- A. Use Data.com to standardize Contact address information to help identify duplicates.
- B. Make use of the Merge Contacts feature of Salesforce to merge duplicates for an Account.
- C. Use Workflow rules to standardize Contact information to identify and prevent duplicates.
- D. Make use of a third-party tool to help merge duplicate Contacts across Accounts.

Answer: A,D (LEAVE A REPLY)

NEW QUESTION: 72

An architect has been asked by a client to develop a solution that will integrate data and resolve duplicates and discrepancies between Salesforce and one or more external systems. What two factors should the architect take into consideration when deciding whether or not to use a Master Data Management system to achieve this solution?

Choose 2 answers

- A. Whether or not Salesforce replaced a legacy CRM.
- B. Whether the systems are cloud-based or on-premise.
- C. The number of systems that are integrating with each other.
- D. Whether the system of record changes for different tables.

Answer: C,D (LEAVE A REPLY)

NEW QUESTION: 73

Universal Containers wants their Shipment custom object to always relate to a Container, a Sender, and a Receiver (all separate custom objects). If a Shipment is currently associated with a Container, Sender, or Receiver, deletion of those records should not be allowed. They also want separate sharing models on each custom object. What approach should an architect take to fulfill these requirements?

- A. Create two Master-Detail and one Lookup relationship to the parent records.
- B. Use a VLOOKUP formula field to associate the Shipment to each parent record.
- C. Create a required Lookup relationship to each of the three parent records.
- D. Create a Master-Detail relationship to each of the three parent records.

Answer: A (LEAVE A REPLY)

NEW QUESTION: 74

UC has migrated its Back-office data into an on-premise database with REST API access. UC recently implemented Sales cloud for its sales organization. But users are complaining about a lack of order data inside SF.

UC is concerned about SF storage limits but would still like Sales cloud to have access to the data.

Which design patterns should a data architect select to satisfy the requirement?

- A. Develop a bidirectional integration between the on-premise system and Salesforce.
- B. Build a UI for the on-premise system and iframe it in Salesforce
- C. Use SF Connect to virtualize the data in SF and avoid storage limits.
- D. Migrate and persist the data in SF to take advantage of native functionality.

Answer: C ([LEAVE A REPLY](#))

NEW QUESTION: 75

A large retail B2C customer wants to build a 360 view of its customer for its call center agents.

The customer interaction is currently maintained in the following system: 1. Salesforce CRM

- 2. Custom billing solution
- 3. Customer Master Data management (MDM)
- 4. Contract Management system
- 5. Marketing solution

What should a data architect recommend that would help upgrade uniquely identify customer across multiple systems:

- A. Create a custom field as external id to maintain the customer Id from the MDM solution.
- B. Create a custom object that will serve as a cross reference for the customer id.
- C. Store the salesforce id in all the solutions to identify the customer.
- D. Create a customer data base and use this id in all systems.

Answer: A ([LEAVE A REPLY](#))

NEW QUESTION: 76

Universal Containers (UC) management has identified a total of ten text fields on the Contact object as important to capture any changes made to these fields, such as who made the change, when they made the change, what is the old value, and what is the new value. UC needs to be able to report on these field data changes within Salesforce for the past 3 months. What are two approaches that will meet this requirement? Choose 2 answers

- A. Create a Contact report including these ten fields and Salesforce Id, then schedule the report to run once a day and send email to the admin.
- B. Turn on field Contact object history tracking for these ten fields, then create reports on contact history.
- C. Create a workflow to evaluate the rule when a record is created and use field update actions to store previous values for these ten fields in ten new fields.
- D. Write an Apex trigger on Contact after insert event and after update events and store the old values in another custom object.

Answer: ([SHOW ANSWER](#))

offer the **newest Data-Architecture-And-Management-Designer exam dumps**, the Actual4test.com Data-Architecture-And-Management-Designer exam **questions have been updated** and **answers have been corrected** get the **newest** Actual4test.com Data-Architecture-And-Management-Designer dumps with Test Engine here:
https://www.actual4test.com/Data-Architecture-And-Management-Designer_examcollection.html (224 Q&As Dumps, **30%OFF Special Discount: Freepdfdumps**)

NEW QUESTION: 77

Universal Containers (UC) owns a complex Salesforce org with many Apex classes, triggers, and automated processes that will modify records if available. UC has identified that, in its current development state, UC runs chance of encountering race conditions on the same record. What should a data architect recommend to guarantee that records are not being updated at the same time?

- A. Migrate programmatic logic to processes and flows.
- B. Refactor or optimize classes and triggers for maximum CPU performance.
- C. Disable classes or triggers that have the potential to obtain the same record.
- D. Embed the keywords FOR UPDATE after SOQL statements.

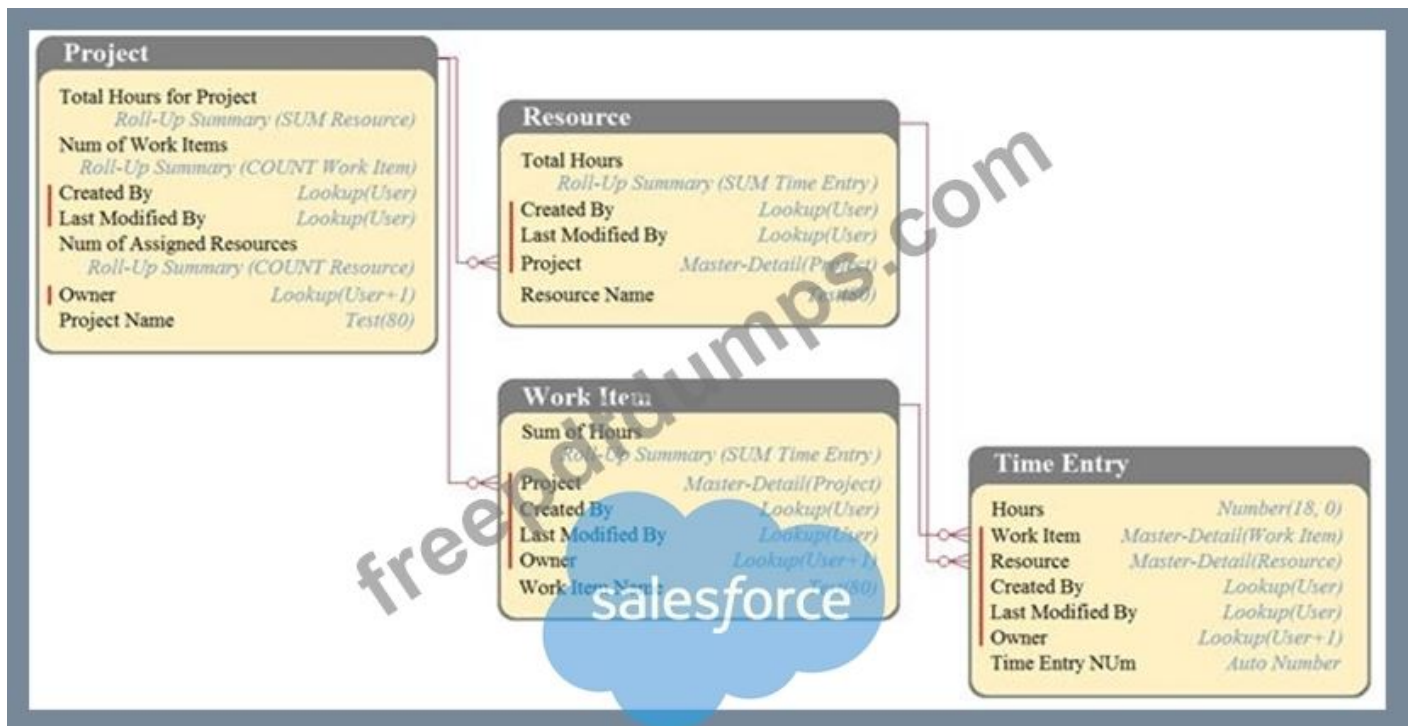
Answer: (SHOW ANSWER)

Embed the keywords FOR UPDATE after any inline SOQL statement.

Reference: https://developer.salesforce.com/docs/atlas.en-us.soql_sosl.meta/soql_sosl/sforce_api_calls_soql_select_for_update.htm

NEW QUESTION: 78

DreamHouse Realty has a data model as shown in the image. The Project object has a private sharing model, and it has Roll-Up summary fields to calculate the number of resources assigned to the project, total hours for the project, and the number of work items associated to the project. There will be a large amount of time entry records to be loaded regularly from an external system into Salesforce.



What should the Architect consider in this situation?

- A. Load all data after deferring sharing calculations.
- B. Load all data using external IDs to link to parent records.
- C. Calculate summary values instead of Roll-Up by using triggers.
- D. Calculate summary values instead of Roll-Up by using workflow.

Answer: A (LEAVE A REPLY)

NEW QUESTION: 79

Get Cloudy Consulting uses an invoicing system that has specific requirements. One requirement is that attachments associated with the Invoice_c custom object be classified by Types (i.e., ""Purchase Order"", ""Receipt"", etc.) so that reporting can be performed on invoices showing the number of attachments grouped by Type.

What should an Architect do to categorize the attachments to fulfill these requirements?

- A. Add additional options to the standard ContentType picklist field for the Attachment object.
- B. Add a ContentType picklist field to the Attachment layout and create additional picklist options.
- C. Create a custom picklist field for the Type on the standard Attachment object with the values.
- D. Create a custom object related to the Invoice object with a picklist field for the Type.

Answer: (SHOW ANSWER)

NEW QUESTION: 80

Cloud Kicks needs to optimize data stewardship engagement for a Salesforce instance. Before proposing design recommendations, the Data Architect is first assessing relevant areas of Salesforce.

Which three areas are appropriate to assess? (Choose three.)

- A. Export the setup audit trail to review what fields are being used.

- B. Assess the sharing model to determine impact on duplicate records.
- C. Determine if any integration points create records in Salesforce.
- D. Run key reports to determine what fields should be required.
- E. Assess the metadata xml files for redundant fields to consolidate.

Answer: ([SHOW ANSWER](#))

NEW QUESTION: 81

Cloud Kicks has a system environment that is complex, and they plan on creating a data governance program for the first time.

What are two initial actions Cloud Kicks should take to initiate an assessment of data architecture? (Choose two.)

- A. Work with database administrators to assess current database performance metrics.
- B. Work with executive sponsorship to assess enterprise data strategy and goals.
- C. Work with IT program managers to assess current velocity of projects in the pipeline.
- D. Work with business units and IT to assess current operational systems and data models.

Answer: B,D ([LEAVE A REPLY](#))

NEW QUESTION: 82

UC has a legacy client server app that as a relational data base that needs to be migrated to salesforce.

What are the 3 key actions that should be done when data modeling in salesforce?

Choose 3 answers:

- A. Implement legacy data model within salesforce using custom fields.
- B. Map legacy data to salesforce custom objects.
- C. Map legacy data to salesforce objects.
- D. Work with legacy application owner to analysis legacy data model.
- E. Identify data elements to be persisted in salesforce.

Answer: A,C,E ([LEAVE A REPLY](#))

NEW QUESTION: 83

A health care provider wishes to use salesforce to track patient care. The following actions are in Salesforce

1. Payment Providers: Orgas who pay for the care 2 patients.
2. Doctors: They provide care plan for patients and need to support multiple patients, they are provided access to patient information.
3. Patients: They are individuals who need care.

A data architect needs to map the actor to Sf objects. What should be the optimal selection by the data architect?

- A. Patients as Accounts, Payment providers as Accounts, & Doctors as Person Accounts
- B. Patients as Person Accounts, Payment providers as Accounts, & Doctors as Person Account
- C. Patients as Person Accounts, Payment providers as Accounts, & Doctors as Contacts

D. Patients as Contacts, Payment providers as Accounts, & Doctors as Accounts

Answer: B ([LEAVE A REPLY](#))

NEW QUESTION: 84

Universal Containers (UC) is transitioning from Classic to Lightning Experience.

What does UC need to do to ensure users have access to its notices and attachments in Lightning Experience?

- A. Migrate Notes and Attachment to Enhanced Notes and Files a migration tool
- B. Manually upload Notes in Lightning Experience.
- C. Add Notes and Attachments Related List to page Layout in Lightning Experience.
- D. Manually upload Attachments in Lightning Experience.

Answer: C ([LEAVE A REPLY](#))

NEW QUESTION: 85

Universal Containers (UC) is planning to launch its Customer Community. The community will allow user to register shipment requests which are then processed by UC employees.

Shipment requests contain header information, and then a list of no more than 5 items being shipped. UC will initially roll out its community to 5,000 customers in Europe, and will ultimately roll out to 20,000 customers worldwide within the next two years. UC expects an average of 10 shipment requests per week per customer. UC wants customers to be able to view up to three years of shipment requests and use Salesforce reports. What is the recommended solution for UC's Data Architect to address the requirements?

- A. Create a custom object to track shipment requests with five lookup custom fields for each item being shipped Implement an archiving process that moves data off-platform after three years.
- B. Create an external custom object to track shipment requests and a child external object to track shipment items. External objects are stored off-platform in Heroku's Postgres database.
- C. Create a custom object to track shipment requests and a child custom object to track shipment items. Implement an archiving process that moves data off-platform after three years.
- D. Create an external custom object to track shipment requests with five lookup custom fields for each item being shipped. External objects are stored off-platform in Heroku's Postgres database.

Answer: C ([LEAVE A REPLY](#))

NEW QUESTION: 86

NTO processes orders from its website via an order management system (OMS). The OMS stores over 2 million historical records and is currently not integrated with SF. The Sales team at NTO using Sales cloud and would like visibility into related customer orders yet they do not want to persist millions of records directly in Salesforce. NTO has asked the data architect to evaluate SF connect and the concept of data verification. Which 3 considerations are needed prior to a SF Connect implementation?

Choose 3 answers:

- A. Develop an object relationship strategy.

- B. Create a 2nd system Admin user for authentication to the external source.
- C. Configure a middleware tool to poll external table data
- D. Identify the external tables to sync into external objects
- E. Assess whether the external data source is reachable via an ODATA endpoint.

Answer: ([SHOW ANSWER](#))

NEW QUESTION: 87

UC is building a salesforce application to track contacts and their respective conferences that they have attended with the following requirements:

1. Contacts will be stored in the standard contact object.
2. Conferences will be stored in a custom conference__c object.
3. Each contact may attend multiple conferences and each conference may be related to multiple contacts.

How should a data architect model the relationship between the contact and conference objects?

- A. Create a lookup relationship field on contact object.
- B. Create a master detail relationship field on the Conference object.
- C. Create a master detail relationship field on the Contact object.
- D. Implement a Contact Conference junction object with master detail relationship to both contact and conference__c.

Answer: D ([LEAVE A REPLY](#))

NEW QUESTION: 88

Northern trail Outfitters (NTO) uses Sales Cloud and service Cloud to manage sales and support processes.

Some of NTOs team are complaining they see new fields on their page unsure of which values need be input.

NTO is concerned about lack of governance in making changes to Salesforce.

Which governance measure should a data architect recommend to solve this issue?

- A. Create and manage a data dictionary and ups a governance process for changes made to common objects.
- B. Create reports to identify which users are leaving blank, and use external data sources o agreement the missing data.
- C. Create validation rules with error messages to explain why the fields is used
- D. Add description fields to explain why the field is used, and mark the field as required.

Answer: ([SHOW ANSWER](#))

NEW QUESTION: 89

Due to security requirements, Universal Containers needs to capture specific user actions, such as login, logout, file attachment download, package install, etc. What is the recommended approach for defining a solution for this requirement?

- A. Use a third-party AppExchange app to capture changes.

- B. Use Event Monitoring to capture these changes.
- C. Use a field audit trail to capture field changes.
- D. Use a custom object and trigger to capture changes.

Answer: ([SHOW ANSWER](#))

NEW QUESTION: 90

Universal Containers (UC) has a Salesforce instance with over 10,000 Account records. They have noticed similar, but not identical, Account names and addresses. What should UC do to ensure proper data quality?

- A. Use a service to standardize Account addresses, then use a 3rd -party tool to merge Accounts based on rules.
- B. Enable Account de -duplication by creating matching rules in Salesforce, which will mass merge duplicate Accounts.
- C. Run a report, find Accounts whose name starts with the same five characters, then merge those Accounts.
- D. Make the Account Owner clean their Accounts' addresses, then merge Accounts with the same address.

Answer: ([SHOW ANSWER](#))

NEW QUESTION: 91

Northern Trail Outfitters (NTO) has implemented Salesforce for its sales users. The opportunity management in Salesforce is implemented as follows:

1. Sales users enter their opportunities in Salesforce for forecasting and reporting purposes.
2. NTO has a product pricing system (PPS) that is used to update Opportunity Amount field on opportunities on a daily basis.
3. PPS is the trusted source within NTO for Opportunity Amount.
4. NTO uses Opportunity Forecast for its sales planning and management.

Sales users have noticed that their updates to the Opportunity Amount field are overwritten when PPS updates their opportunities.

How should a data architect address this overwriting issue?

- A. Change PPS integration to update only Opportunity Amount field when the value is null.
- B. Change Opportunity Amount field access to Read Only for sales users using field-level security.
- C. Create a custom field for Opportunity amount that PPS updates separating the field sales user updates.
- D. Create a custom field for Opportunity Amount that sales users update separating the field that PPS updates.

Answer: D ([LEAVE A REPLY](#))

Valid Data-Architecture-And-Management-Designer Dumps shared by Actual4test.com for Helping Passing Data-Architecture-And-Management-Designer Exam! Actual4test.com now offer the **newest Data-Architecture-And-Management-Designer exam dumps**, the Actual4test.com Data-Architecture-And-Management-Designer exam **questions have been updated** and **answers have been corrected** get the **newest** Actual4test.com Data-Architecture-And-Management-Designer dumps with Test Engine here:
https://www.actual4test.com/Data-Architecture-And-Management-Designer_examcollection.html (224 Q&As Dumps, **30%OFF Special Discount: Freepdfdumps**)

NEW QUESTION: 92

A customer wants to maintain geographic location information including latitude and longitude in a custom object. What would a data architect recommend to satisfy this requirement?

- A. Create custom fields to maintain latitude and longitude information
- B. Recommend app exchange packages to support this requirement.
- C. Create formula fields with geolocation function for this requirement.
- D. Create a geolocation custom field to maintain this requirement

Answer: ([SHOW ANSWER](#))

NEW QUESTION: 93

Cloud Kicks is launching a Partner Community, which will allow users to register shipment requests that are then processed by Cloud Kicks employees. Shipment requests contain header information, and then a list of no more than 5 items being shipped.

First, Cloud Kicks will introduce its community to 6,000 customers in North America, and then to 24,000 customers worldwide within the next two years. Cloud Kicks expects 12 shipment requests per week per customer, on average, and wants customers to be able to view up to three years of shipment requests and use Salesforce reports.

What is the recommended solution for the Cloud Kicks Data Architect to address the requirements?

- A. Create a custom object to track shipment requests and a child custom object to track shipment items.

Implement an archiving process that moves data off-platform after three years.

- B. Create a custom object to track shipment requests with five lookup custom fields for each item being shipped Implement an archiving process that moves data off-platform after three years.
- C. Create an external custom object to track shipment requests and a child external object to track shipment items. External objects are stored off-platform in Heroku's Postgres database.
- D. Create an external custom object to track shipment requests with five lookup custom fields for each item being shipped. External objects are stored off-platform in Heroku's Postgres database.

Answer: A ([LEAVE A REPLY](#))

NEW QUESTION: 94

UC is preparing to implement sales cloud and would like to its users to have read only access to an account record if they have access to its child opportunity record. How would a data architect implement this sharing requirement between objects?

- A. Create an owner-based sharing rule.
- B. Implicit sharing will automatically handle with standard functionality.
- C. Add appropriate users to the account team.
- D. Create a criteria-based sharing rule.

Answer: [\(SHOW ANSWER\)](#)

NEW QUESTION: 95

Universal Containers (UC) has an open sharing model for its Salesforce users to allow all its Salesforce internal users to edit all contacts, regardless of who owns the contact. However, UC management wants to allow only the owner of a contact record to delete that contact. If a user does not own the contact, then the user should not be allowed to delete the record. How should the architect approach the project so that the requirements are met?

- A. Create a validation rule on the Contact object to check if the current user is not the owner.
- B. Create a "before delete" trigger to check if the current user is not the owner.
- C. Set the profile of the users to remove delete permission from the Contact object.
- D. Set the Sharing settings as Public Read Only for the Contact object.

Answer: [B \(LEAVE A REPLY\)](#)

NEW QUESTION: 96

Universal Containers would like to have a Service-Level Agreement (SLA) of 1 day for any data loss due to unintentional or malicious updates of records in Salesforce. What approach should be suggested to address this requirement?

- A. Schedule a Weekly Extract Service for key objects and extract data in XL sheets to on-premise systems.
- B. Evaluate a third-party AppExchange app, such as OwnBackup or Spanning, etc., for backup and archival purposes.
- C. Build a daily extract job and extract data to on-premise systems for long-term backup and archival purposes.
- D. Store all data in shadow custom objects on any updates and deletes, and extract them as needed .

Answer: [B \(LEAVE A REPLY\)](#)

NEW QUESTION: 97

A large retail B2C customer wants to build a 360-degree view of its customers for its call center agents. The customer information is currently maintained in the following systems:

1. Salesforce CRM
2. Custom billing solution

3. Customer master data management (MDM)
4. Contract management system
5. Marketing solution

What should a data architect recommend that would help uniquely identify the customer across multiple systems?

- A. Create a custom field as external ID to maintain the customer ID from the MDM solution
- B. Create a customer database, and use this ID in all systems
- C. Store the Salesforce ID in all the solutions to identify the customer
- D. Create a custom object that will serve as a cross-reference for the customer ID

Answer: ([SHOW ANSWER](#))

NEW QUESTION: 98

Ursa Major Solar's legacy system has a quarterly accounts receivable report that compiles data from the following:

- Accounts
- Contacts
- Opportunities
- Orders
- Order Line Items

Which issue will an architect have when implementing this in Salesforce?

- A. Salesforce does NOT allow more than four objects in a single report type.
- B. Custom report types CANNOT contain Opportunity data.
- C. A report CANNOT contain data from Accounts and Contacts.
- D. Salesforce does NOT support Orders or Order Line Items.

Answer: A ([LEAVE A REPLY](#))

NEW QUESTION: 99

UC has a roll-up summary field on Account to calculate the count of contacts associated with an account.

During the account load, SF is throwing an "Unable to lock a row" error.

Which solution should a data architect recommend, to resolve the error?

- A. Leverage data loader platform API to load data.
- B. Perform Batch job in parallel mode and reduce Batch size
- C. Perform Batch job in serial mode and reduce batch size
- D. Defer roll-up summary fields calculation during data migration.

Answer: B ([LEAVE A REPLY](#))

NEW QUESTION: 100

UC has one SF org (Org A) and recently acquired a secondary company with its own Salesforce org (Org B).

UC has decided to keep the orgs running separately but would like to bidirectionally share opportunities between the orgs in near-real time.

Which 3 options should a data architect recommend to share data between Org A and Org B? Choose 3 answers.

- A. Develop an Apex class that pushes opportunity data between orgs daily via the Apex schedule.
- B. Leverage Heroku Connect and Heroku Postgres to bidirectionally sync Opportunities.
- C. Leverage middleware tools to bidirectionally send Opportunity data across orgs.
- D. Use Salesforce Connect and the cross-org adapter to visualize Opportunities into external objects
- E. Install a 3rd party AppExchange tool to handle the data sharing

Answer: A,C,D (LEAVE A REPLY)

NEW QUESTION: 101

Universal Containers keeps its Account data in Salesforce and its Invoice data in a third - party ERP system. They have connected the Invoice data through a Salesforce external object. They want data from both Accounts and Invoices visible in one report in one place.

What two approaches should an architect suggest for achieving this solution? Choose 2 answers

- A. Create a Visualforce page combining Salesforce Account data and Invoice external object data.
- B. Create a report combining data from the Account standard object and the Invoices external object.
- C. Create a report in an external system combining Salesforce Account data and Invoice data from the ERP.
- D. Create a separate Salesforce report for Accounts and Invoices and combine them in a dashboard.

Answer: A,C (LEAVE A REPLY)

Valid Data-Architecture-And-Management-Designer Dumps shared by Actual4test.com for Helping Passing Data-Architecture-And-Management-Designer Exam! Actual4test.com now offer the **newest Data-Architecture-And-Management-Designer exam dumps**, the Actual4test.com Data-Architecture-And-Management-Designer exam **questions have been updated** and **answers have been corrected** get the **newest** Actual4test.com Data-Architecture-And-Management-Designer dumps with Test Engine here:

https://www.actual4test.com/Data-Architecture-And-Management-Designer_examcollection.html

(224 Q&As Dumps, **30%OFF Special Discount:**

Freepdfdumps)